

R. 97 W.

T. 5 S.

T. 6 S.

GRID NORTH

SCALE' 1" = 1000'



SHL

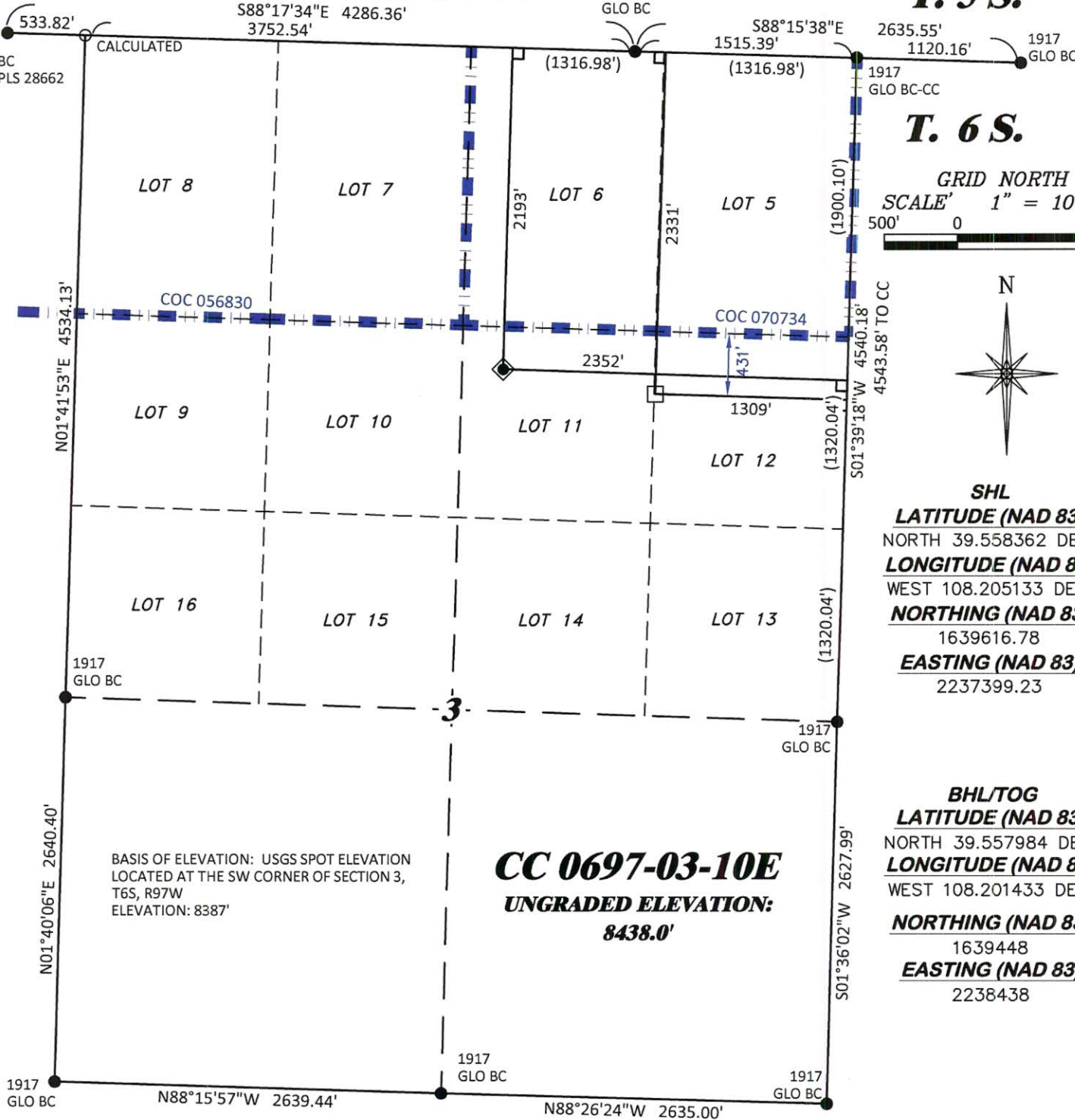
LATITUDE (NAD 83)
NORTH 39.558362 DEG.
LONGITUDE (NAD 83)
WEST 108.205133 DEG.
NORTHING (NAD 83)
1639616.78
EASTING (NAD 83)
2237399.23

BHL/TOG

LATITUDE (NAD 83)
NORTH 39.557984 DEG.
LONGITUDE (NAD 83)
WEST 108.201433 DEG.
NORTHING (NAD 83)
1639448
EASTING (NAD 83)
2238438

CC 0697-03-10E

UNGRADED ELEVATION:
8438.0'



NOTES

- GPS OPERATOR T. SHERRILL OBSERVED A PDOP OF 2.1.
- ALL GPS OBSERVATIONS ARE IN COMPLIANCE WITH COGCC RULE No.215.
- NO EXISTING IMPROVEMENTS WITHIN 500' OF LOCATION. SEE LOCATION DRAWING.
- SURROUNDING SURFACE USE IS NATIVE BRUSH, NON CROP RANGELAND.

BASIS OF BEARING/DATUM

SPCS COLORADO CENTRAL NAD 27 BASED ON GPS OBSERVATIONS AND OPUS SOLUTION ON DRG CONTROL POINT "WILLIAMS" HAVING A POSITION OF:
NAD83(2011)
LAT 39° 31' 35.18" NORTH
LONG 108° 12' 16.79" WEST
NAVD88 ELEVATION: 8618.14'

THE SOUTH LINE OF THE SW¼ OF SECTION 3, MONUMENTED BY BLM BC'S AND BEARING N 88°15'57" W.

SURVEYOR'S STATEMENT

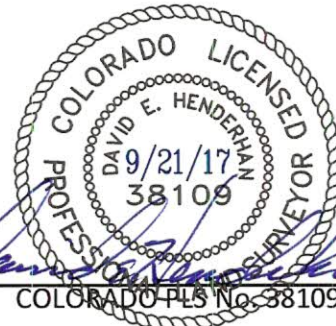
I, DAVID E. HENDERHAN, AN EMPLOYEE AND AGENT ON BEHALF OF D.R. GRIFFIN & ASSOCIATES, INC. STATE THE PLAT HEREON IS A CORRECT REPRESENTATION OF A SURVEY MADE UNDER MY SUPERVISION ON THE 23rd DAY OF JUNE, 2017 OF THE SHOWN CC 0697-03-10E AND THAT THE LOCATION HAS BEEN STAKED ON THE GROUND AS SHOWN ON THIS PLAT.

Notice: In accordance with Colorado State Law, any legal action based upon any defect in this survey plat must commence within three (3) years after first discovery of such defect. In no event, may any action based upon any defect in this survey plat be commenced more than ten (10) years from the date of certification shown hereon.

CC 0697-03-07 PAD

LEGEND

- WELL LOCATION
- APPROX. BHL
- DENOTES 90° TIE
- FOUND MONUMENT
- CALCULATED CORNER
- BLM LEASE LINE



COLORADO PLS No. 38109



DAVID E. HENDERHAN
1414 ELK ST., ROCK SPRINGS, WY 82901

DRAWN: 9/19/2017 - TCM

SCALE: 1" = 1000'

REVISED: N/A -

DRG JOB No. 21295

B5 03-10E

PLAT OF DRILLING LOCATION IN
LOT 11, SECTION 3, FOR
LARAMIE ENERGY, LLC.

2193' F/NL, & 2352' F/EL, SECTION 3,
T. 6 S., R. 97 W., 6TH P.M.,
GARFIELD COUNTY, COLORADO