

AUFRECHT N2-9

WELL LOCATION

NE 1/4 SEC. 2, T.5N., R.67W.

See Visible Improvements Exhibit for all visible improvements within 200' of wellhead.

Ground elevation shown is approximate and is based on an observed GPS elevation (NAVD 1988 DATUM).

= FOUND ALIQUOT MONUMENT AS DESCRIBED

= SET ALIQUOT MONUMENT AS DESCRIBED

All distances to section lines are measured perpendicular to and are at right angles to said section lines.

Distance to nearest property line: 726'

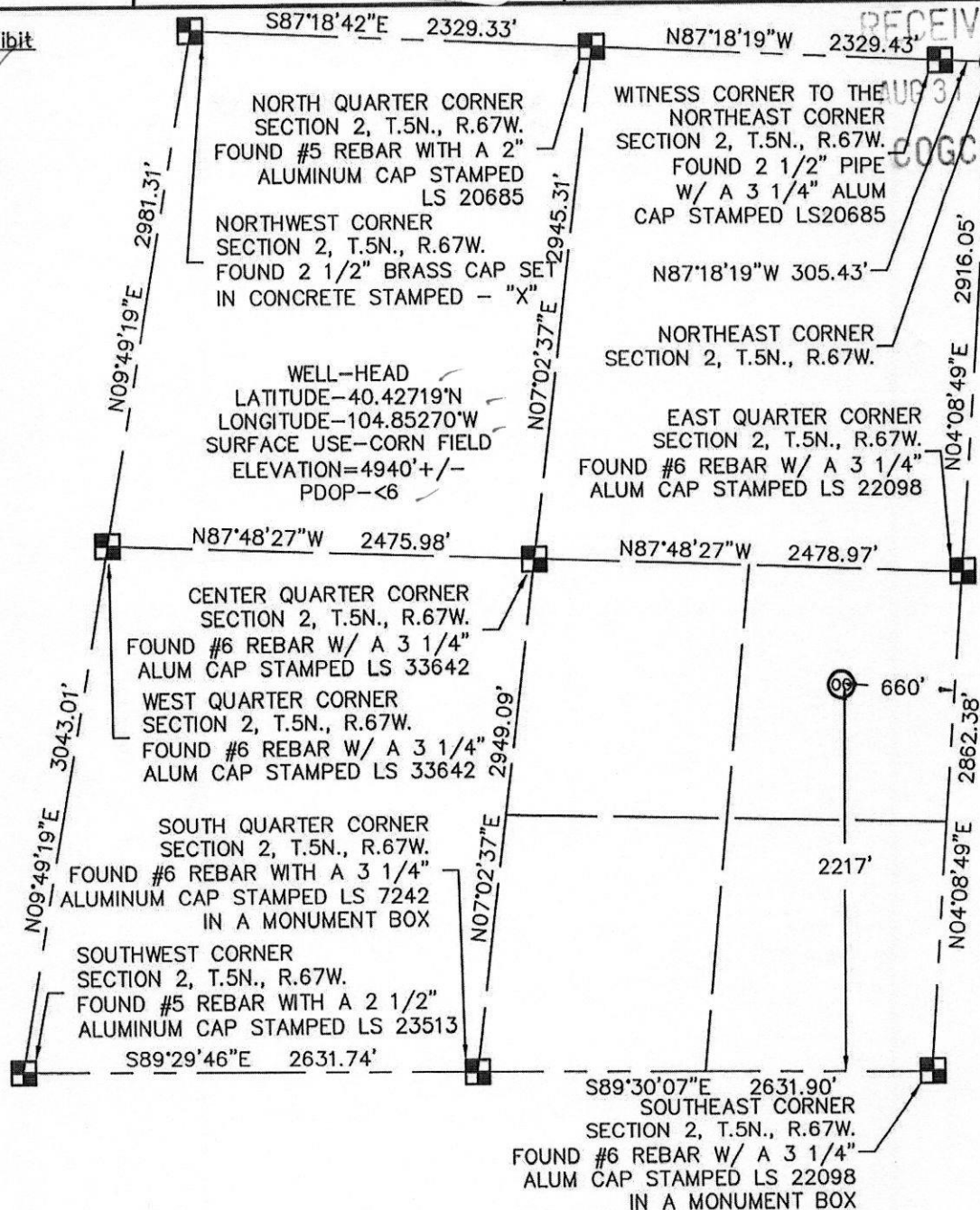
LEGEND

= SECTION LINE

= QUARTER SECTION LINE

= SIXTEENTH SECTION LINE

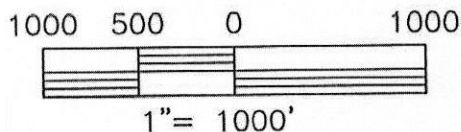
Bearings shown are Grid Bearings of the Colorado State Plane Coordinate System, North Zone, North American Datum 1983/92.



King Surveyors Inc. of Windsor, Colorado has in accordance with a request from Gary Steele for Noble Energy Production Inc. determined the surface location of Aufrecht N2-9 to be 2217' from the South line and 660' from the East line of Section 2, Township 5 North, Range 67 West of the Sixth Principal Meridian, County of Weld, State of Colorado.

I, hereby certify that this plat is an accurate representation of a correct survey showing the location of Aufrecht N2-9.

Steven A. Lund-On behalf of King Surveyors, Inc.
Licensed Land Surveyor No. 34995
State of Colorado



KING SURVEYORS, INC.

650 Garden Drive | Windsor, Colorado 80550
phone: (970) 686-5011 | fax: (970) 686-5821
www.kingsurveyors.com

PROJECT NO: 2005541

DATE: 8-21-07

CLIENT: NOBLE ENERGY

DWG: 2005541WELL.dwg

FIELD OPERATOR: BEN ADSIT

DATE OF WORK: 7-26-07

AUFRECHT N2-9

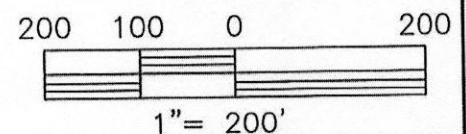
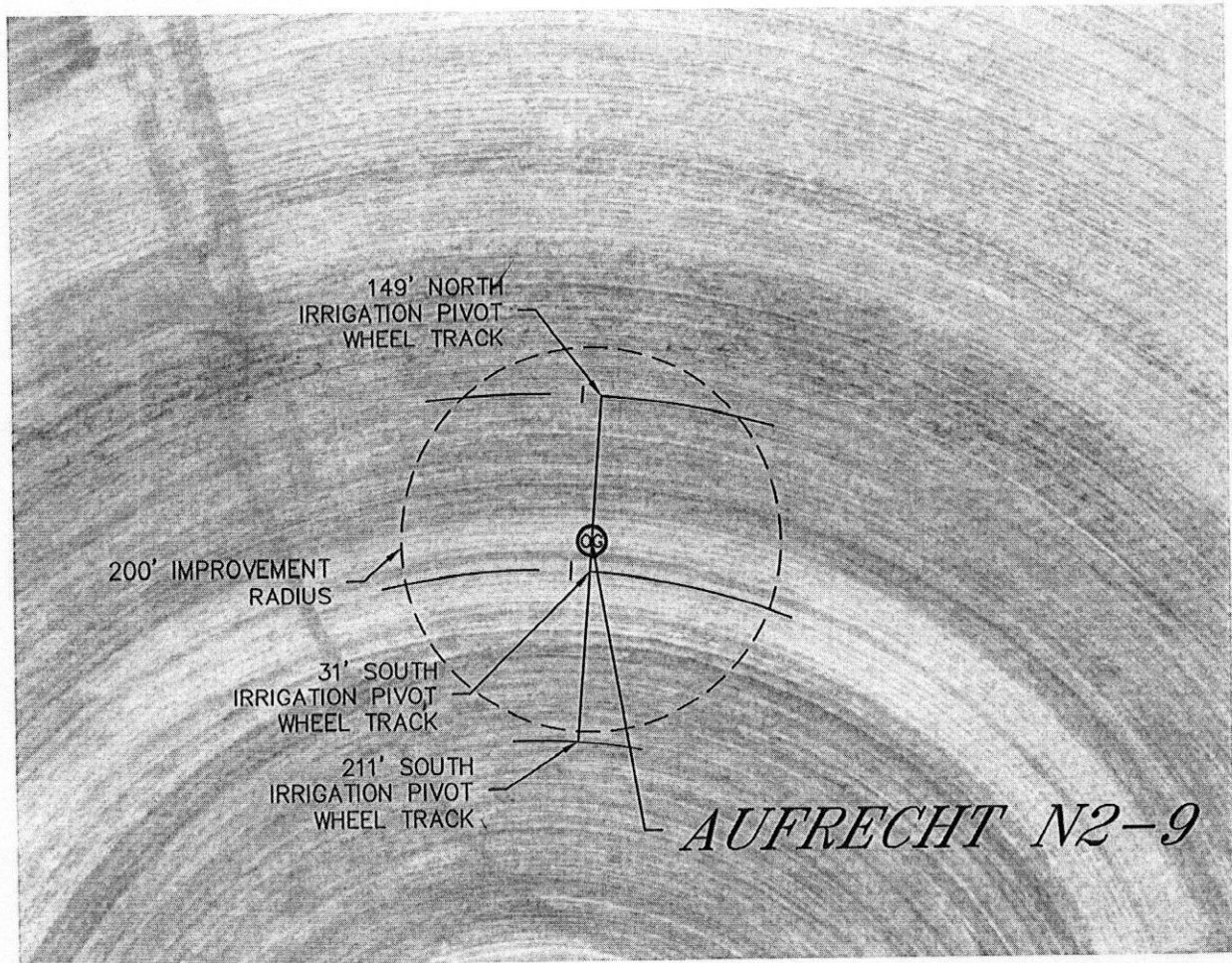
IMPROVEMENTS

LOCATION
NE $\frac{1}{4}$ SE $\frac{1}{4}$ SEC. 2, T.5N., R.67W.

RECEIVED

AUG 31 07

COGCC



KING SURVEYORS, INC.

650 Garden Drive | Windsor, Colorado 80550

phone: (970) 686-5011 | fax: (970) 686-5821

www.kingsurveyors.com

PROJECT NO: 2005541

DATE: 8-21-07

CLIENT: NOBLE ENERGY

DWG: 2005541WELL.dwg

FIELD OPERATOR: BEN ADSIT

DATE OF WORK: 7-26-07