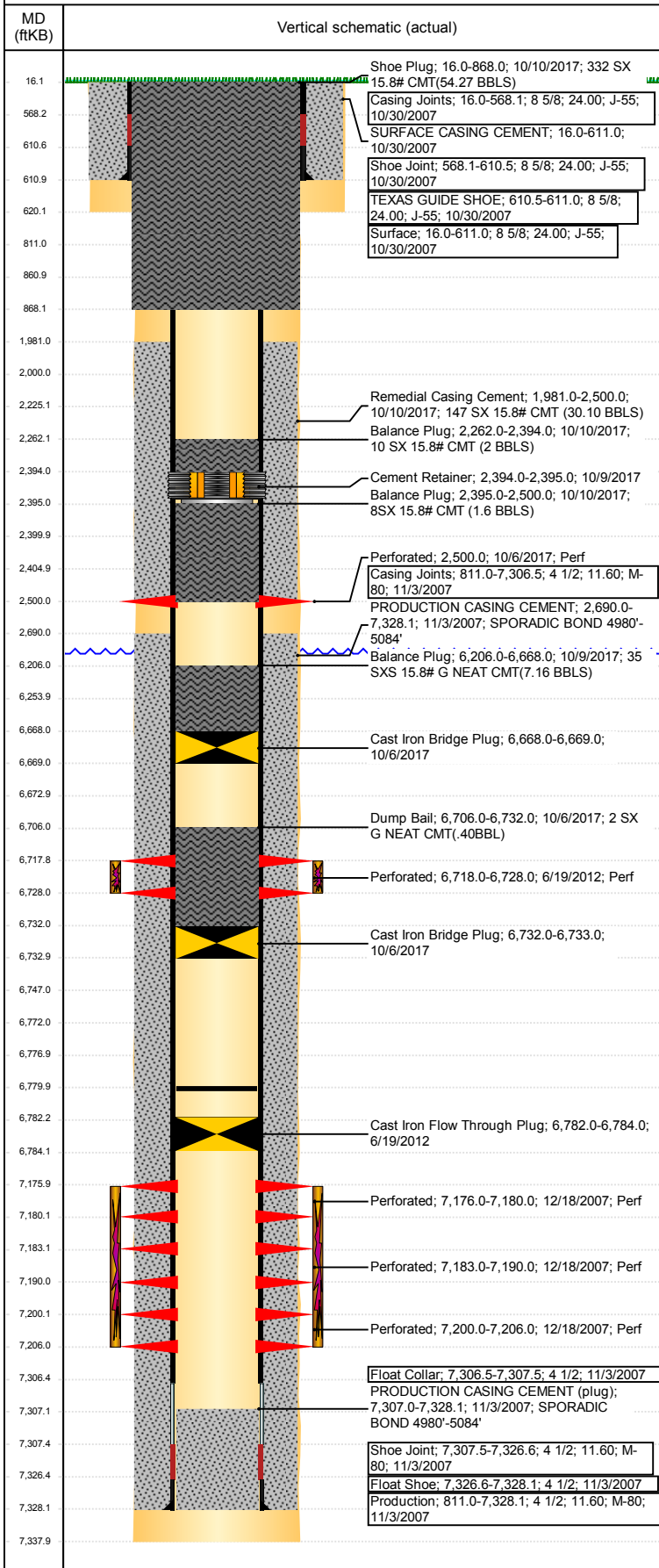


Well Name: CERVI USX CC27-11

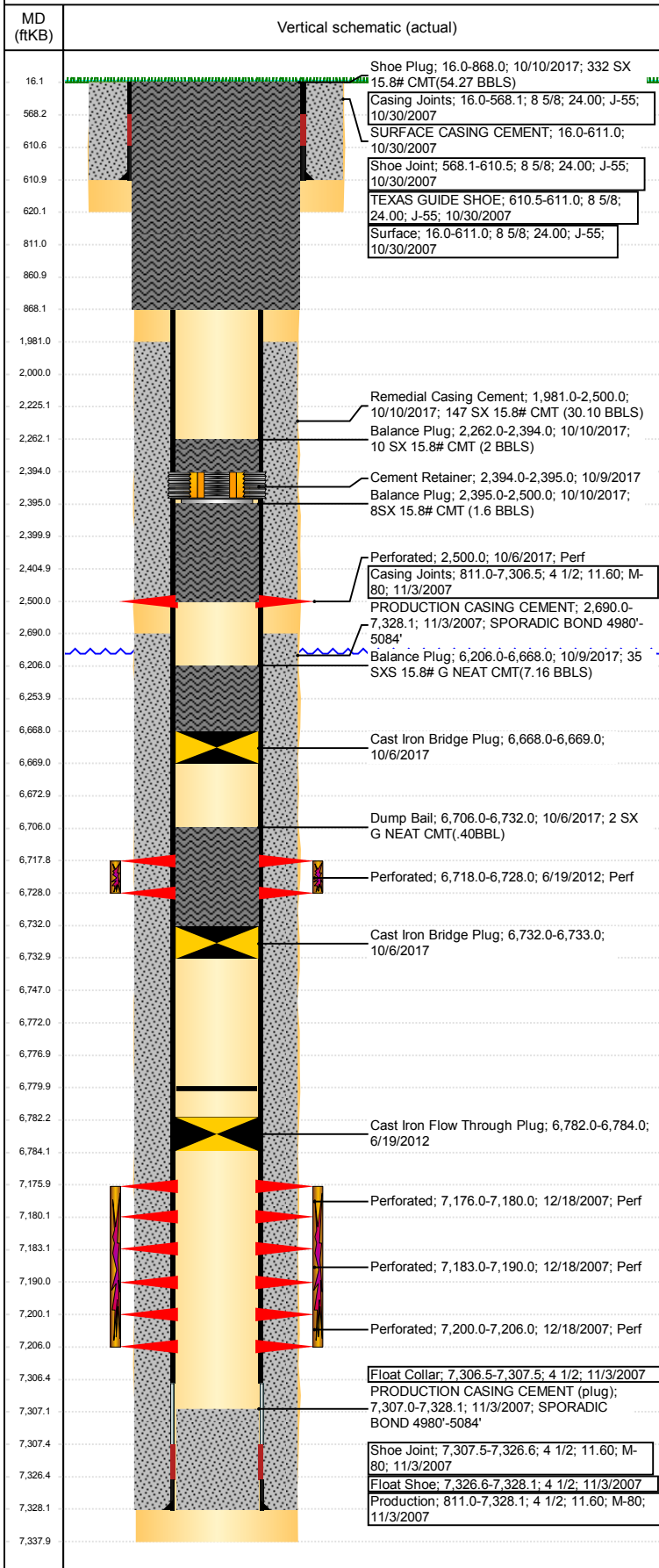
VERTICAL - ORIGINAL HOLE, 10/25/2017 3:34:31 PM



Well Header						
API 05-123-26033	Business Unit DJ BASIN		District 15		Well Config VERTICAL	
Original KB Elevation (ft) 4,825	KB - GL / MSL (ftKB) 16.00		Spud Date 10/29/2007		P & A Date 10/11/2017	
Comment						
Directions To Well HWY 34 & WCR 69, EAST 0.1, TO CERVI GATE (2010) SOUTH 2.5 MILES, WEST 0.5 MILES INTO						
Congressional Location						
Quarter 3 NE	Quarter 4 SW	Section 27	Township 4	Twنشp N/S Dir N	Range 63	Range E/W Dir W
Bottom Hole Location						
North-South Distance (ft)		From N or S Line		East-West Distance (ft)		From E or W Line
Plug Back Total Depths						
Date	Depth (ftKB)	Method		Com		
11/3/2007	7,307.0	CASING TALLY		GUIDE SHOE		
12/17/2007	7,280.0	CASED HOLE LOG		DEPTH LOGGER		
6/18/2012	7,301.0	TAG		FILL @7301		
7/30/2012	6,780.0	TAG		DRILL CIFTP AND PUSH TO 6780'		
Wellbore Sections						
Section Des		Size (in)		Act Top, MD (ftKB)		Act Btm, MD (ftKB)
SURFACE		12 1/4		16		620
PRODUCTION		7 7/8		620		7,338
Zone Statuses						
Zone Name	Status Date	Status	Fluid Type	Job	Prod Method	
J SAND	9/15/2008	SI		DRILLING/CO...		
J SAND	1/11/2011	PR		DRILLING/CO...		
J SAND	10/11/2017	P&A		PLUG AND AB...		
CODELL	8/2/2012	PR		RECOMPLETI...		
CODELL	10/10/2017	P&A		PLUG AND AB...		
NIOBRARA	10/10/2017	P&A		PLUG AND AB...		
Casing Strings						
Surface, 611.0ftKB						
Casing Description Surface	Run Date 10/30/2007	OD (in) 8 5/8	Wt/Len (l...) 24.00	Grade J-55	Top, MD (ft...) 16.0	MD (ftKB) 611.0
Production, 7,328.1ftKB						
Casing Description Production	Run Date 11/3/2007	OD (in) 4 1/2	Wt/Len (l...) 11.60	Grade M-80	Top, MD (ft...) 16.0	MD (ftKB) 7,328.1
Cement						
Description SURFACE CASING CEMENT				Top Depth (ftKB) 16.0		Bottom Depth (ftKB) 611.0
Description PRODUCTION CASING CEMENT				Top Depth (ftKB) 2,690.0		Bottom Depth (ftKB) 7,328.1
Description Dump Bail				Top Depth (ftKB) 6,747.0		Bottom Depth (ftKB) 6,772.0
Description Balance Plug				Top Depth (ftKB) 6,254.0		Bottom Depth (ftKB) 6,668.0
Description Remedial Casing Cement				Top Depth (ftKB) 2,000.0		Bottom Depth (ftKB) 2,500.0
Description Cement Plug				Top Depth (ftKB) 2,405.0		Bottom Depth (ftKB) 2,500.0
Description Cement Plug				Top Depth (ftKB) 2,225.0		Bottom Depth (ftKB) 2,400.0
Description Balance Plug				Top Depth (ftKB) 811.0		Bottom Depth (ftKB) 861.0
Description Balance Plug				Top Depth (ftKB) 16.0		Bottom Depth (ftKB) 811.0
Description Dump Bail				Top Depth (ftKB) 6,706.0		Bottom Depth (ftKB) 6,732.0
Description Balance Plug				Top Depth (ftKB) 6,206.0		Bottom Depth (ftKB) 6,668.0
Description Balance Plug				Top Depth (ftKB) 2,395.0		Bottom Depth (ftKB) 2,500.0
Description Balance Plug				Top Depth (ftKB) 2,262.0		Bottom Depth (ftKB) 2,394.0
Description Remedial Casing Cement				Top Depth (ftKB) 1,981.0		Bottom Depth (ftKB) 2,500.0
Description Shoe Plug				Top Depth (ftKB) 16.0		Bottom Depth (ftKB) 868.0

Well Name: CERVI USX CC27-11

VERTICAL - ORIGINAL HOLE, 10/25/2017 3:34:32 PM



Tubing Strings								
Tubing Description	Run Date	String...	ID (in)	Wt (lb/ft)	Grade	Len (ft)	Set De...	
Tubing - Frac string	12/18/2007	2 3/8	2.00	4.70	J-55	7,150.00		
Tubing Components								
Item Des	OD (in)	Wt (lb/ft)	Grade	Jts	Len (ft)	Btm (ftKB)	Btm (TVD) (ftKB)	
Tubing	2 3/8	4.70	J-55		7,148.50	7,162.5		
Pump Seating Nipple	2 3/8				1.00	7,163.5		
Notched collar	2 3/8				0.50	7,164.0		
Tubing Description	Run Date	String...	ID (in)	Wt (lb/ft)	Grade	Len (ft)	Set De...	
Tubing - Production	7/31/2012	2 3/8	2.00	4.70	J-55	6,682.40		
Tubing Components								
Item Des	OD (in)	Wt (lb/ft)	Grade	Jts	Len (ft)	Btm (ftKB)	Btm (TVD) (ftKB)	
EUE 8rd Tubing	2 3/8	4.70	J-55	217	6,680.75	6,696.7		
Pump Seating Nipple	2 3/8				1.10	6,697.8		
Notched collar	2 3/8				0.55	6,698.4		
Other In Hole								
Run Date	Des	OD (in)	Top (ftKB)	Btm (ftKB)				
6/19/2012	Cast Iron Flow Through Plug	3.99	6,782.0	6,784.0				
6/27/2012	Cast Iron Bridge Plug	4	6,668.0	6,673.0				
6/27/2012	Cast Iron Bridge Plug	4	6,772.0	6,777.0				
6/27/2012	Cement Retainer	4	2,400.0	2,405.0				
10/6/2017	Cast Iron Bridge Plug	3.99	6,732.0	6,733.0				
10/6/2017	Cast Iron Bridge Plug	3.99	6,668.0	6,669.0				
10/9/2017	Cement Retainer	3.99	2,394.0	2,395.0				
Logs								
Date	Type	Top, MD (ftKB)	Btm, MD (ftKB)					
11/3/2007	COMPENSATED DENSITY	2,540.0	7,318.0					
11/3/2007	INDUCTION	620.0	7,338.0					
12/17/2007	CBL/CCL/GR	2,550.0	7,278.0					
12/17/2007	GYRO	0.0	6,600.0					
Perforation Data								
Linked Zone	Bnch/St g	Sum of Entered Shot Total	Top (ftKB)	Btm (ftKB)	Date			
J SAND, ORIGINAL HOLE	3	0	2,500.00	2,500.00	6/27/2017			
CODELL, ORIGINAL HOLE		40	6,718.00	6,728.00	6/19/2012			
J SAND, ORIGINAL HOLE	1	16	7,176.00	7,180.00	12/18/2007			
J SAND, ORIGINAL HOLE	2	28	7,183.00	7,190.00	12/18/2007			
J SAND, ORIGINAL HOLE	3	24	7,200.00	7,206.00	12/18/2007			
Total (Sum)		108						
Stimulation Intervals								
Start Date	Primary Job Type							
1/11/2008	DRILLING/COMPLETION - ORIGINAL							
Technical Result	Tech Result Details	Tech Result Note						
Comment	GOOD OVERALL TREATMENT TRIPLE ENTRY CONFIGURATION							
Start Date	Primary Job Type							
7/16/2012	RECOMPLETION							
Technical Result	Tech Result Details	Tech Result Note						
Success	According to Plan							
Comment								