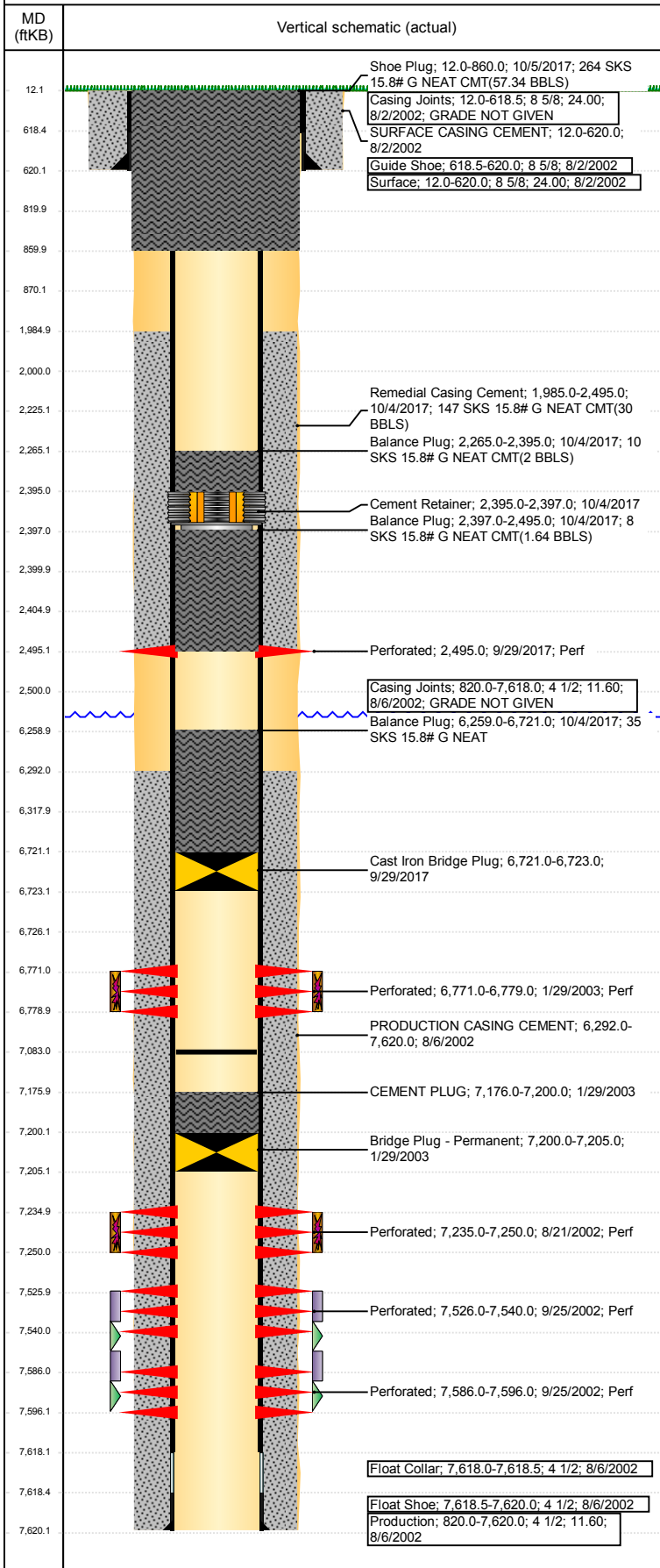


Wellbore Schematic Input Report

Well Name: CERVI 11-27

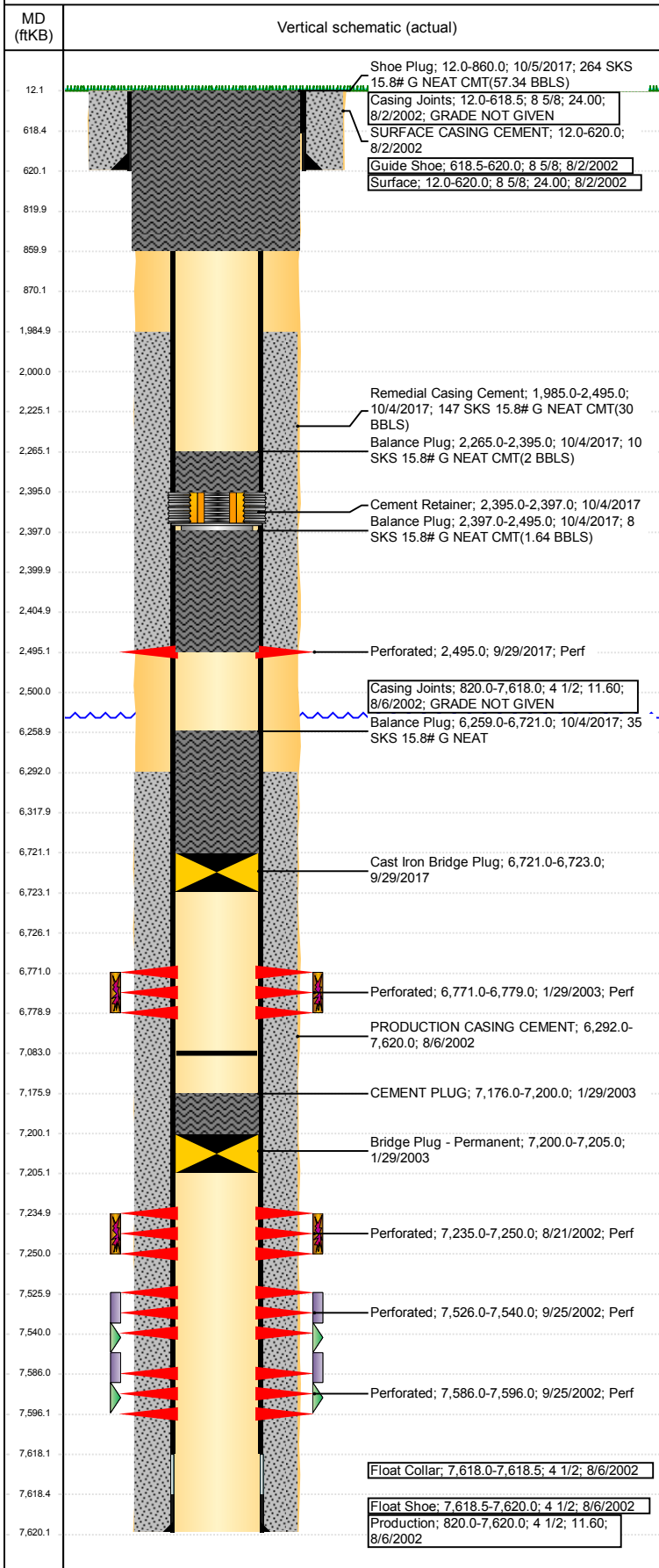
VERTICAL - ORIGINAL HOLE, 11/4/2017 11:04:30 AM



Well Header						
API 05-123-21002	Business Unit DJ BASIN		District 15	Well Config VERTICAL		
Original KB Elevation (ft) 4,872	KB - GL / MSL (ftKB) 12.00		Spud Date 8/1/2002		P & A Date 10/5/2017	
Comment Ran pump & rods 1/06; will pull pump & rods. Pulled pump and rods in April of 2009.						
Directions To Well HWY 34 & RD 69, E. 3/10, S. 2 - 2/10, W 9/10, S. INTO.						
Congressional Location						
Quarter 3 NW	Quarter 4 NW	Section 27	Township 4	Twntshp N/S Dir N	Range 63	Range E/W Dir W
Bottom Hole Location						
North-South Distance (ft)		From N or S Line		East-West Distance (ft)		From E or W Line
Plug Back Total Depths						
Date	Depth (ftKB)	Method		Com		
8/6/2002	7,577.0	CASING TALLY		FLOAT COLLAR ON CASING TALLY		
8/21/2002	7,521.0	TAG		DEPTH LOGGER ON CBL		
9/24/2002	7,620.0	TAG		CLEANOUT		
4/30/2009	7,083.0	TAG				
Wellbore Sections						
Section Des		Size (in)		Act Top, MD (ftKB)		Act Btm, MD (ftKB)
SURFACE		12 1/4		12		620
PRODUCTION		7 7/8		620		7,620
Zone Statuses						
Zone Name	Status Date	Status	Fluid Type	Job	Prod Method	
DAKOTA	1/29/2003	AB		DRILLING/CO...	Flowing	
DAKOTA	10/2/2012	PR	Water			
DAKOTA	9/29/2017	P&A	Water	PLUG AND AB...	Flowing	
J SAND	1/29/2003	AB		DRILLING/CO...		
J SAND	10/2/2012	PR	Water		Flowing	
J SAND	8/31/2017	P&A	Water	PLUG AND AB...		
CODELL	2/10/2003	PR	Gas	DRILLING/CO...		
CODELL	8/1/2006	SI	Gas			
CODELL	6/1/2009	PR		RECONFIGUR...	Flowing	
CODELL	10/2/2012	PR	Water			
CODELL	9/29/2017	P&A	Water	PLUG AND AB...		
Casing Strings						
Surface, 620.0ftKB						
Casing Description	Run Date	OD (in)	Wt/Len (l...	Grade	Top, MD (ft...	MD (ftKB)
Surface	8/2/2002	8 5/8	24.00		12.0	620.0
Production, 7,620.0ftKB						
Casing Description	Run Date	OD (in)	Wt/Len (l...	Grade	Top, MD (ft...	MD (ftKB)
Production	8/6/2002	4 1/2	11.60		12.0	7,620.0
Cement						
Description				Top Depth (ftKB)		Bottom Depth (ftKB)
SURFACE CASING CEMENT				12.0		620.0
Description				Top Depth (ftKB)		Bottom Depth (ftKB)
PRODUCTION CASING CEMENT				6,292.0		7,620.0
Description				Top Depth (ftKB)		Bottom Depth (ftKB)
CEMENT PLUG				7,176.0		7,200.0
Description				Top Depth (ftKB)		Bottom Depth (ftKB)
Balance Plug				6,318.0		6,721.0
Description				Top Depth (ftKB)		Bottom Depth (ftKB)
Remedial Casing Cement				2,000.0		2,500.0
Description				Top Depth (ftKB)		Bottom Depth (ftKB)
Cement Plug				2,405.0		2,500.0
Description				Top Depth (ftKB)		Bottom Depth (ftKB)
Cement Plug				2,225.0		2,400.0
Description				Top Depth (ftKB)		Bottom Depth (ftKB)
Balance Plug				820.0		870.0
Description				Top Depth (ftKB)		Bottom Depth (ftKB)
Balance Plug				12.0		820.0
Description				Top Depth (ftKB)		Bottom Depth (ftKB)
Balance Plug				6,259.0		6,721.0
Description				Top Depth (ftKB)		Bottom Depth (ftKB)
Remedial Casing Cement				1,985.0		2,495.0
Description				Top Depth (ftKB)		Bottom Depth (ftKB)
Balance Plug				2,265.0		2,395.0

Well Name: CERVI 11-27

VERTICAL - ORIGINAL HOLE, 11/4/2017 11:04:31 AM



Cement								
Description Balance Plug				Top Depth (ftKB) 2,397.0		Bottom Depth (ftKB) 2,495.0		
Description Shoe Plug				Top Depth (ftKB) 12.0		Bottom Depth (ftKB) 860.0		
Tubing Strings								
Tubing Description Tubing		Run Date 1/19/2006	String...	ID (in)	Wt (lb/ft)	Grade	Len (ft)	Set De...
Tubing Components								
Item Des		OD (in)	Wt (lb/ft)	Grade	Jts	Len (ft)	Btm (ftKB)	Btm (TVD) (ftKB)
		2 3/8	4.70	J55	206		6,666.0	
Tubing Description Tubing - Production		Run Date 4/30/2009	String... 2 3/8	ID (in) 2.00	Wt (lb/ft) 4.70	Grade J-55	Len (ft) 6,743.34	Set De...
Tubing Components								
Item Des		OD (in)	Wt (lb/ft)	Grade	Jts	Len (ft)	Btm (ftKB)	Btm (TVD) (ftKB)
Tubing		2 3/8	4.70	J-55	207	6,741.82	6,751.9	
Seal Nipple		2 3/8	4.70	N-80	1	1.10	6,753.0	
Notched collar		2 3/8	4.70	J-55	1	0.42	6,753.4	
Tubing Description Tubing - Production		Run Date 2/4/2016	String... 2 3/8	ID (in) 2.00	Wt (lb/ft) 4.70	Grade J-55	Len (ft) 6,911.97	Set De...
Tubing Components								
Item Des		OD (in)	Wt (lb/ft)	Grade	Jts	Len (ft)	Btm (ftKB)	Btm (TVD) (ftKB)
Stretch Correction		2 3/8			1	3.00	15.0	
EUE 8rd Tubing		2 3/8	4.70	J-55	203	6,612.61	6,627.6	
Anchor/catcher		3.99	4.70	N-80	1	3.05	6,630.7	
EUE 8rd Tubing		2 3/8	4.70	J-55	7	225.29	6,856.0	
Pump Seating Nipple		2 3/8	1.10		1	1.10	6,857.1	
PERF SUB		2 3/8	4.70	J-55	1	4.00	6,861.1	
EUE 8rd Tubing		2 3/8	4.70	J-55	2	62.47	6,923.5	
MUD ANCHOR								
Bull Plug		2 3/8			1	0.45	6,924.0	
Other In Hole								
Run Date	Des				OD (in)	Top (ftKB)	Btm (ftKB)	
1/29/2003	Bridge Plug - Permanent				3.99	7,200.0	7,205.0	
6/16/2017	Cement Retainer				3.99	2,400.0	2,405.0	
6/16/2017	Cast Iron Bridge Plug				3.99	6,721.0	6,726.0	
9/29/2017	Cast Iron Bridge Plug				3.99	6,721.0	6,723.0	
10/4/2017	Cement Retainer				3.99	2,395.0	2,397.0	
Logs								
Date	Type				Top, MD (ftKB)		Btm, MD (ftKB)	
8/6/2002	TRIPLE COMBO				617.0		7,620.0	
8/21/2002	CBL/CCL/GR				6,090.0		7,516.0	
10/2/2017	GYRO				11.0		6,000.0	
Perforation Data								
Linked Zone		Bnch/St g	Sum of Entered Shot Total	Top (ftKB)		Btm (ftKB)		Date
DAKOTA, ORIGINAL HOLE CODELL, ORIGINAL HOLE J SAND, ORIGINAL HOLE DAKOTA, ORIGINAL HOLE DAKOTA, ORIGINAL HOLE			0	2,400.00		2,400.00		6/16/2017
			4	2,495.00		2,495.00		9/29/2017
			32	6,771.00		6,779.00		1/29/2003
			60	7,235.00		7,250.00		8/21/2002
			56	7,526.00		7,540.00		9/25/2002
			40	7,586.00		7,596.00		9/25/2002
Total (Sum)			192					
Stimulation Intervals								
Start Date 8/22/2002		Primary Job Type DRILLING/COMPLETION - ORIGINAL						
Technical Result			Tech Result Details			Tech Result Note		
Comment Pump in pressure decline throughout job								

Well Name: CERVI 11-27

VERTICAL - ORIGINAL HOLE, 11/4/2017 11:04:31 AM

Stimulation Intervals

Start Date 9/26/2002	Primary Job Type DRILLING/COMPLETION - ORIGINAL	
Technical Result	Tech Result Details	Tech Result Note
Comment ACID JOB		
Start Date 10/7/2002	Primary Job Type DRILLING/COMPLETION - ORIGINAL	
Technical Result	Tech Result Details	Tech Result Note
Comment ACID JOB		
Start Date 1/30/2003	Primary Job Type DRILLING/COMPLETION - ORIGINAL	
Technical Result	Tech Result Details	Tech Result Note
Comment		

