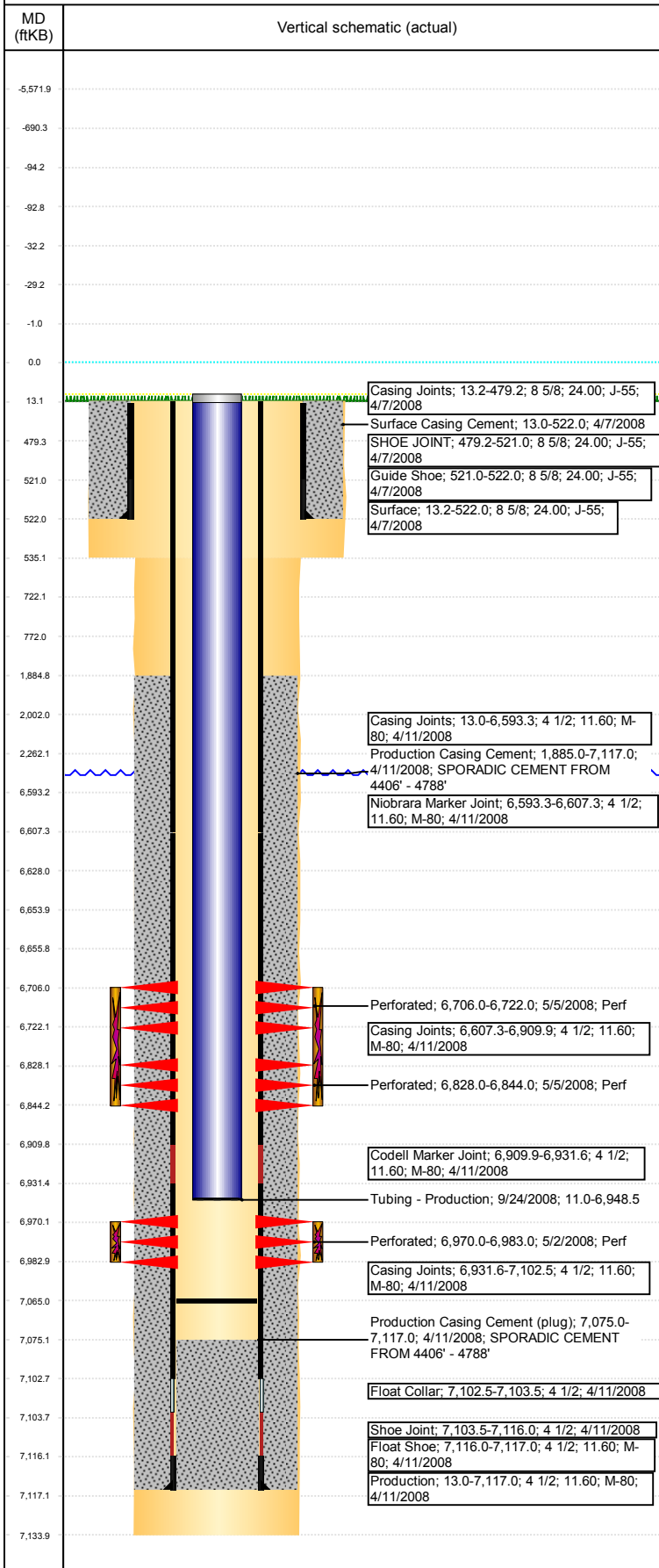


Well Name: DPG F01-33

DEVIATED - ORIGINAL HOLE, 11/2/2017 11:17:55 AM



Well Header

API 05-123-25683	Business Unit DJ BASIN	District 15	Well Config DEVIATED
Original KB Elevation (ft) 4,618	KB - GL / MSL (ftKB) 13.00	Spud Date 4/7/2008	P & A Date

Comment

DIRECTIONAL WELL. CODELL REFRAC JOB ENTERED BUT FOUND NO INFO OF JOB BEING DONE. STATE SHOWS SHUT IN JUNE 2017.

Directions To Well

From the intersection of CR 47 and E. 8th Street, go South 1/4 mile, then East 1/6th mile to location

Congressional Location

Quarter 3 SW	Quarter 4 SW	Section 1	Township 5	Twntshp N/S Dir N	Range 65	Range E/W Dir W
-----------------	-----------------	--------------	---------------	----------------------	-------------	--------------------

Bottom Hole Location

North-South Distance (ft) 1,350.0	From N or S Line FSL	East-West Distance (ft) 75.0	From E or W Line FWL
--------------------------------------	-------------------------	---------------------------------	-------------------------

Plug Back Total Depths

Date	Depth (ftKB)	Method	Com
4/11/2008	7,102.0	CASING TALLY	FLOAT COLLAR
4/25/2008	7,075.0	CASED HOLE LOG	DEPTH LOGGER ON CBL
9/23/2008	7,065.0	TAG	82' OF RATHOLE.

Wellbore Sections

Section Des	Size (in)	Act Top, MD (ftKB)	Act Btm, MD (ftKB)
SURFACE	12 1/4	13	535
PRODUCTION	7 7/8	535	7,134

Zone Statuses

Zone Name	Status Date	Status	Fluid Type	Job	Prod Method
NIOBRARA	6/10/2008	PR		DRILLING/CO...	
NIOBRARA	2/24/2010	PR	Water		Flowing
CODELL	6/10/2008	PR		DRILLING/CO...	
CODELL	2/24/2010	PR	Water		Flowing
CODELL	11/29/2016	SI			

Casing Strings

Surface, 522.0ftKB

Casing Description	Run Date	OD (in)	Wt/Len (l...)	Grade	Top, MD (ft...)	MD (ftKB)
Surface	4/7/2008	8 5/8	24.00	J-55	13.2	522.0

Production, 7,117.0ftKB

Casing Description	Run Date	OD (in)	Wt/Len (l...)	Grade	Top, MD (ft...)	MD (ftKB)
Production	4/11/2008	4 1/2	11.60	M-80	13.0	7,117.0

Cement

Description	Top Depth (ftKB)	Bottom Depth (ftKB)
Surface Casing Cement	13.0	522.0
Production Casing Cement	1,885.0	7,117.0
DUMP BAIL	6,628.0	6,654.0
DUMP BAIL	2,002.0	2,262.0
SHOE PLUG	13.1	722.0
SHOE PLUG	722.0	772.0

Tubing Strings

Tubing Description	Run Date	String...	ID (in)	Wt (lb/ft)	Grade	Len (ft)	Set De...
Tubing - Production	9/24/2008	2 3/8	2.00	4.70	J-55	6,937.46	

Tubing Components

Item Des	OD (in)	Wt (lb/ft)	Grade	Jts	Len (ft)	Btm (ftKB)	Btm (TVD) (ftKB)
Tubing Pup Joint	2 3/8	4.70	J-55	1	10.00	21.0	
Tubing	2 3/8	4.70	J-55	224	6,925.81	6,946.8	
Seating nipple	2 3/8			1	1.20	6,948.0	
Notched collar	2 3/8	4.70	J-55	1	0.45	6,948.5	

Other In Hole

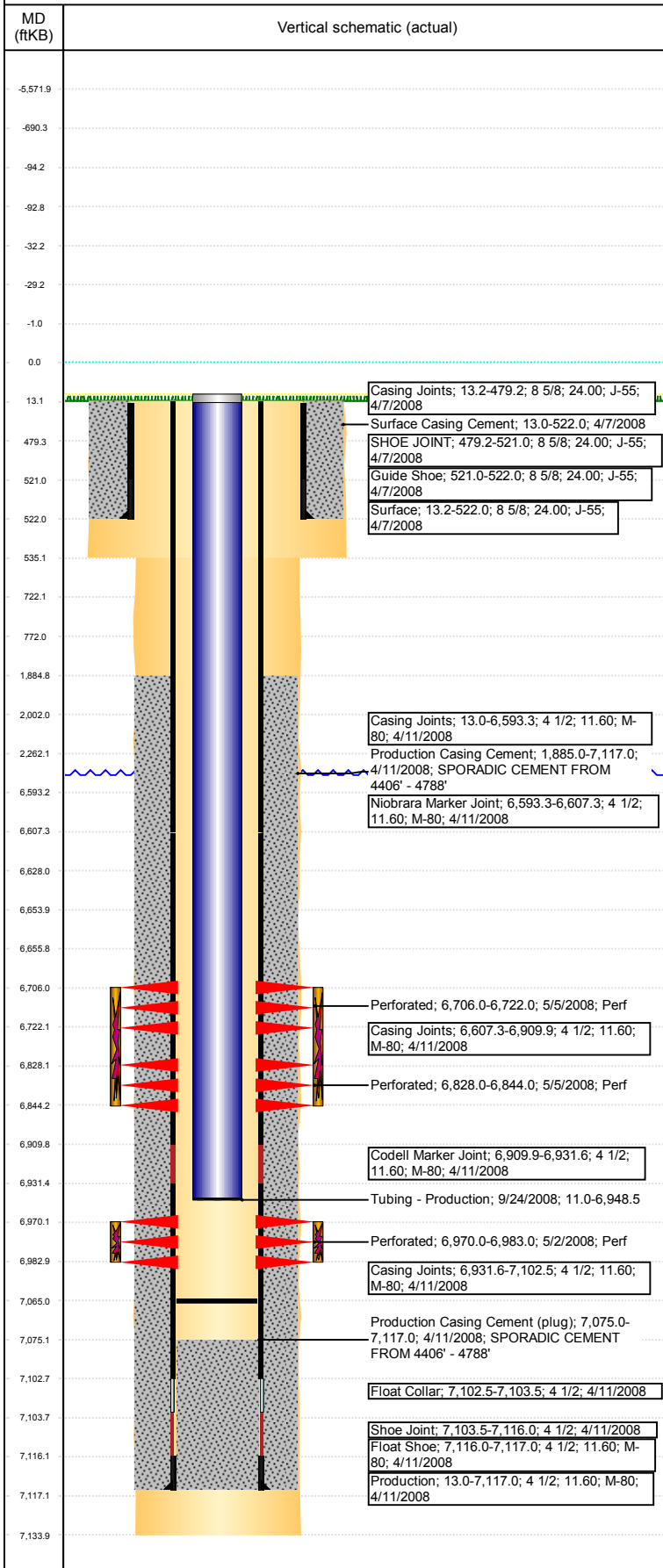
Run Date	Des	OD (in)	Top (ftKB)	Btm (ftKB)
10/30/2017	Cast Iron Bridge Plug	4	6,654.0	6,656.0

Logs

Date	Type	Top, MD (ftKB)	Btm, MD (ftKB)
4/10/2008	COMPENSATED DENSITY	2,500.0	7,109.0

Well Name: DPG F01-33

DEVIATED - ORIGINAL HOLE, 11/2/2017 11:17:56 AM



Logs			
Date	Type	Top, MD (ftKB)	Btm, MD (ftKB)
4/10/2008	INDUCTION	500.0	7,129.0
4/25/2008	CBL/CCL/GR	1,780.0	7,068.0

Perforation Data					
Linked Zone	Bnch/St g	Sum of Entered Shot Total	Top (ftKB)	Btm (ftKB)	Date
NIORARA, ORIGINAL HOLE	A	64	6,706.00	6,722.00	5/5/2008
NIORARA, ORIGINAL HOLE	B	64	6,828.00	6,844.00	5/5/2008
CODELL, ORIGINAL HOLE		52	6,970.00	6,983.00	5/2/2008
Total (Sum)		180			

Stimulation Intervals		
Start Date	Primary Job Type	
5/5/2008	DRILLING/COMPLETION - ORIGINAL	
Technical Result	Tech Result Details	Tech Result Note
Success	According to Plan	
Comment		
FRAC THE CODELL - NO PROBLEMS TO REPORT		
Start Date	Primary Job Type	
5/5/2008	DRILLING/COMPLETION - ORIGINAL	
Technical Result	Tech Result Details	Tech Result Note
Success	According to Plan	
Comment		
FRAC THE NIO A & B BENCH - NO PROBLEMS TO REPORT		