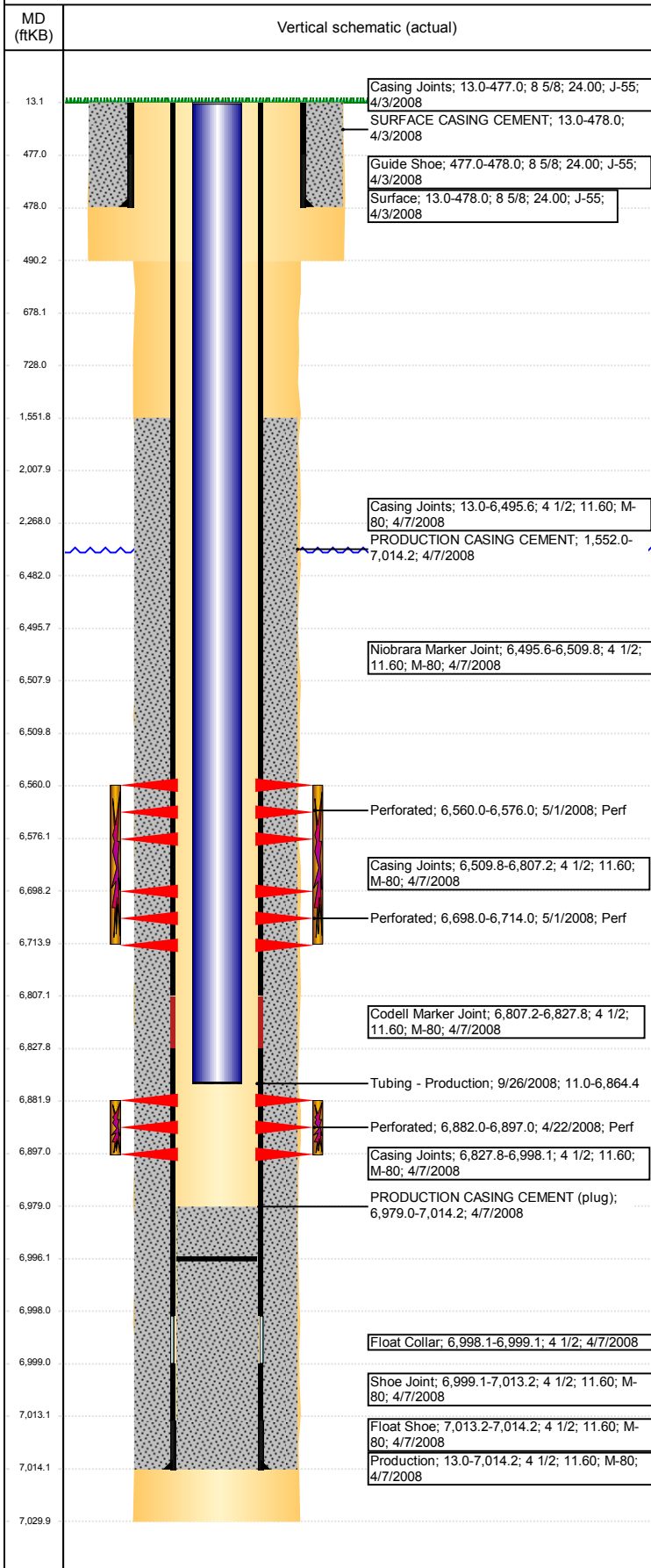


Well Name: DPG F01-13

VERTICAL - ORIGINAL HOLE, 11/2/2017 11:06:45 AM



Well Header

API 05-123-25569	Business Unit DJ BASIN	District 15	Well Config VERTICAL
Original KB Elevation (ft) 4,618	KB - GL / MSL (ftKB) 13.00	Spud Date 4/3/2008	P & A Date
Comment			

Directions To Well

From the intersection of CR 47 and E. 8th Street, go South 1/4 mile, then East 1/6th of a mile to location

Congressional Location

Quarter 3 SW	Quarter 4 SW	Section 1	Township 5	Twntshp N/S Dir N	Range 65	Range E/W Dir W
-----------------	-----------------	--------------	---------------	----------------------	-------------	--------------------

Bottom Hole Location

North-South Distance (ft)	From N or S Line	East-West Distance (ft)	From E or W Line
---------------------------	------------------	-------------------------	------------------

Plug Back Total Depths

Date	Depth (ftKB)	Method	Com
4/7/2008	6,999.0	CASING TALLY	DEPTH LOGGER
4/18/2008	6,979.0	CASED HOLE LOG	
9/26/2008	6,996.0	TAG	

Wellbore Sections

Section Des	Size (in)	Act Top, MD (ftKB)	Act Btm, MD (ftKB)
SURFACE	12 1/4	13	490
PRODUCTION	7 7/8	490	7,030

Zone Statuses

Zone Name	Status Date	Status	Fluid Type	Job	Prod Method
NIOBRARA	5/27/2008	PR		DRILLING/CO...	
CODELL	5/27/2008	PR		DRILLING/CO...	

Casing Strings

Surface, 478.0ftKB

Casing Description	Run Date	OD (in)	Wt/Len (l...)	Grade	Top, MD (ft...)	MD (ftKB)
Surface	4/3/2008	8 5/8	24.00	J-55	13.0	478.0

Production, 7,014.2ftKB

Casing Description	Run Date	OD (in)	Wt/Len (l...)	Grade	Top, MD (ft...)	MD (ftKB)
Production	4/7/2008	4 1/2	11.60	M-80	13.0	7,014.2

Cement

Description	Top Depth (ftKB)	Bottom Depth (ftKB)
SURFACE CASING CEMENT	13.0	478.0
PRODUCTION CASING CEMENT	1,552.0	7,014.2
SHOE PLUG	678.0	728.0
COURTESY PLUG	2,008.0	2,268.0
SHOE PLUG	13.1	678.0
DUMP BAIL	6,482.0	6,508.0

Tubing Strings

Tubing Description	Run Date	String...	ID (in)	Wt (lb/ft)	Grade	Len (ft)	Set De...
Tubing - Production	9/26/2008	2 3/8	2.00	4.70	J-55	6,853.43	

Tubing Components

Item Des	OD (in)	Wt (lb/ft)	Grade	Jts	Len (ft)	Btm (ftKB)	Btm (TVD) (ftKB)
Tubing Pup Joint	2 3/8	4.70	J-55	1	10.00	21.0	
Tubing	2 3/8	4.70	J-55	221	6,841.48	6,862.5	
Seal Nipple	2 3/8			1	1.20	6,863.7	
Blade Bit welded to collar	3 7/8			1	0.75	6,864.4	

Other In Hole

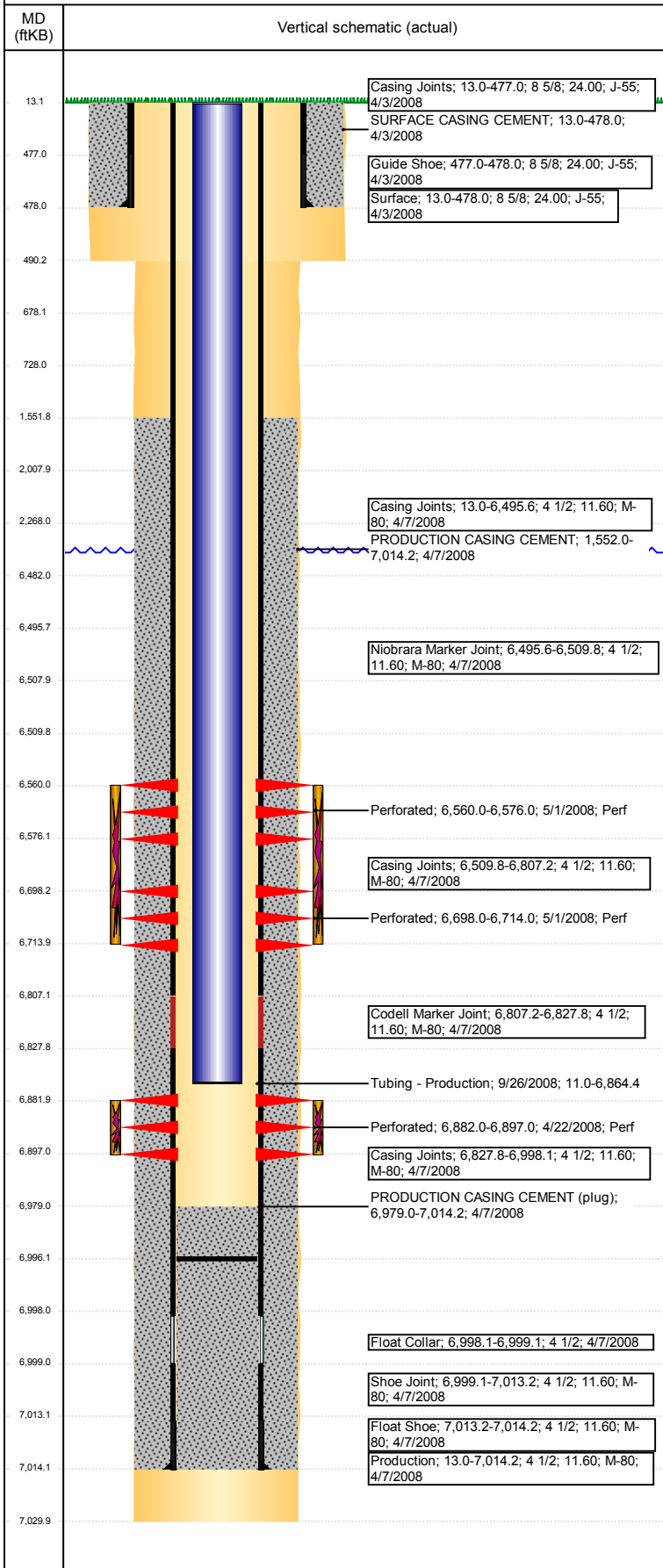
Run Date	Des	OD (in)	Top (ftKB)	Btm (ftKB)
10/26/2017	Cast Iron Bridge Plug	4	6,508.0	6,510.0

Logs

Date	Type	Top, MD (ftKB)	Btm, MD (ftKB)
4/6/2008	Caliper/Comp. Density/Neutron/GR/SP/ML	2,500.0	7,010.0
4/6/2008	DIL/GR/SP/Caliper	460.0	7,030.0
4/18/2008	CBL/CCL/GR	1,450.0	6,972.0

Well Name: DPG F01-13

VERTICAL - ORIGINAL HOLE, 11/2/2017 11:06:46 AM



Perforation Data					
Linked Zone	Bnch/St g	Sum of Entered Shot Total	Top (ftKB)	Btm (ftKB)	Date
NIOBRARA, ORIGINAL HOLE	A	64	6,560.00	6,576.00	5/1/2008
NIOBRARA, ORIGINAL HOLE	B	64	6,698.00	6,714.00	5/1/2008
CODELL, ORIGINAL HOLE		60	6,882.00	6,897.00	4/22/2008
Total (Sum)		188			
Stimulation Intervals					
Start Date 5/1/2008		Primary Job Type DRILLING/COMPLETION - ORIGINAL			
Technical Result Success		Tech Result Details According to Plan		Tech Result Note	
Comment (CODELL): CHLORIDES AVERAGED 496 (MG/L) ON ALL 7 TANKS, USED HYDRO TO INCREASE HYDRATION TIME. NO OTHER ISSUES TO REPORT.					
Start Date 5/1/2008		Primary Job Type DRILLING/COMPLETION - ORIGINAL			
Technical Result Success		Tech Result Details According to Plan		Tech Result Note	
Comment (NIOBRARA): JOB WENT WELL, NO ISSUES TO REPORT.					