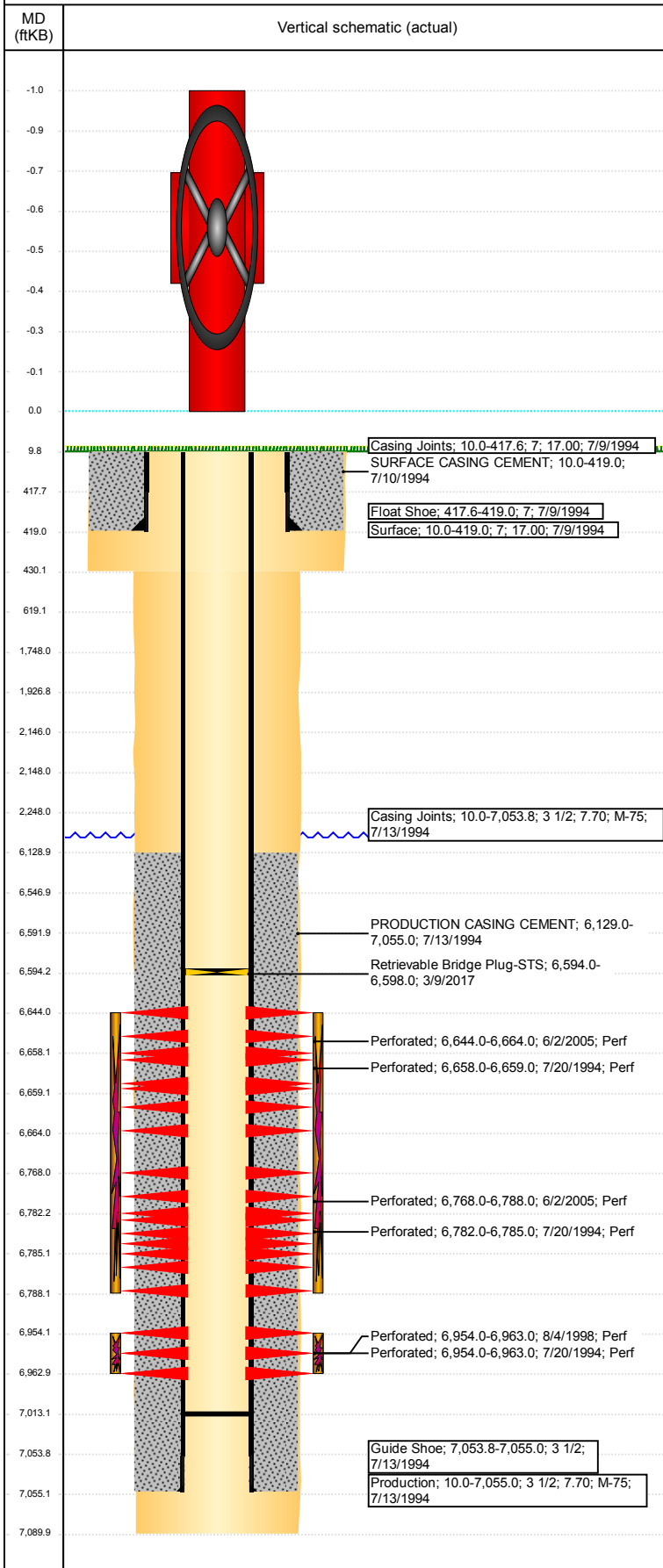


**Well Name: CLARK 14-10H5**

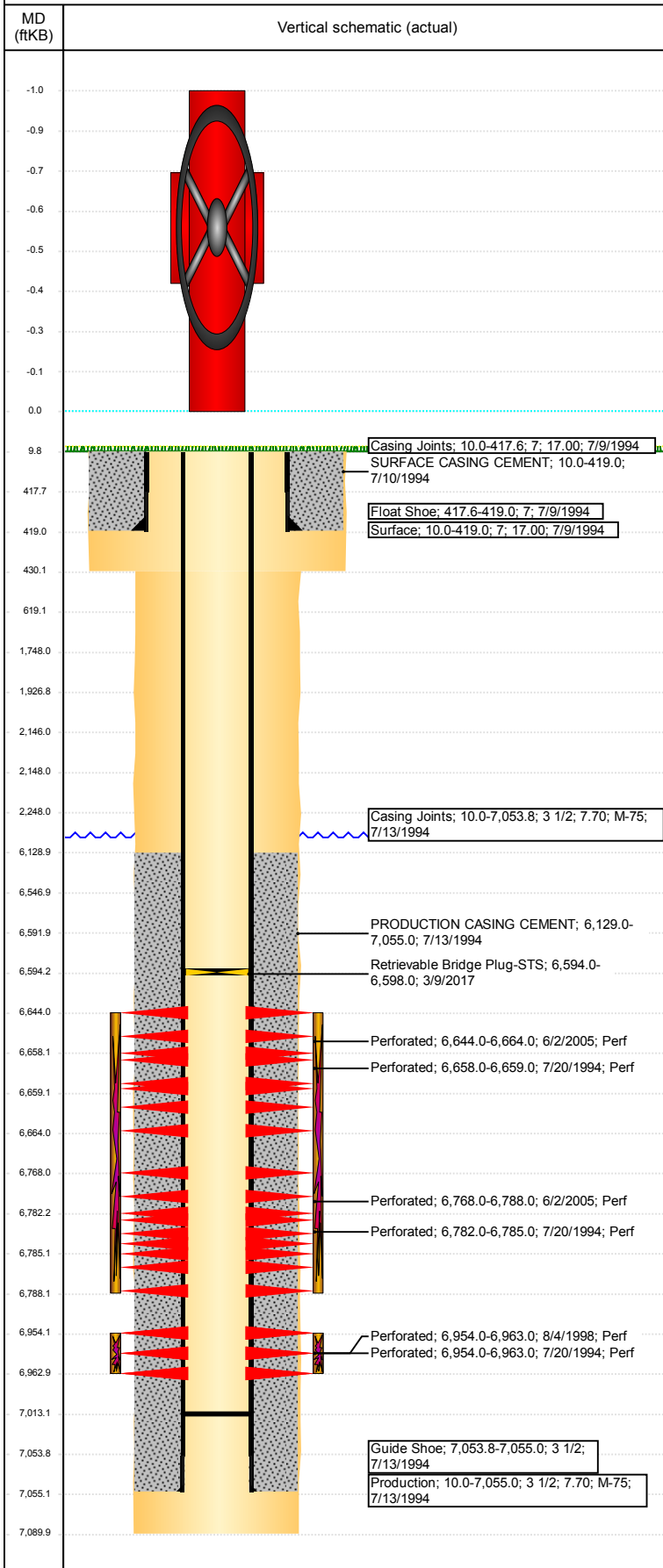
VERTICAL - ORIGINAL HOLE, 11/2/2017 11:04:19 AM



Well Header							
API 05-123-18370	Business Unit DJ BASIN		District 15		Well Config VERTICAL		
Original KB Elevation (ft) 4,620	KB - GL / MSL (ftKB) 10.00		Spud Date 7/9/1994		P & A Date		
Comment							
Directions To Well HWY 34 BUSINESS LOOP AND 24TH ST. EAST TO HEMLOCK AVE. EAST THROUGH GATES AND SOUTHEAST 2/10 INTO.							
Congressional Location							
Quarter 3 NW	Quarter 4 SE	Section 14	Township 5	Twnshp N/S Dir N	Range 65	Range E/W Dir W	
Bottom Hole Location							
North-South Distance (ft)		From N or S Line		East-West Distance (ft)		From E or W Line	
Plug Back Total Depths							
Date	Depth (ftKB)	Method		Com			
7/13/1994	7,013.0	TAG		C/O DOWN TO 7013			
5/5/2009	7,000.3	TAG					
1/10/2014	7,013.0	TAG					
Wellbore Sections							
Section Des		Size (in)		Act Top, MD (ftKB)		Act Btm, MD (ftKB)	
SURFACE		12 1/4		10		430	
PRODUCTION		7 7/8		430		7,090	
Zone Statuses							
Zone Name	Status Date	Status	Fluid Type	Job	Prod Method		
CODELL	8/11/1994	PR	Gas	DRILLING/CO...			
CODELL	3/9/2017	TA	Gas	HORIZONTAL...			
NIOBRARA-C...							
NIOBRARA	8/11/1994	PR	Gas	DRILLING/CO...			
NIOBRARA	3/9/2017	TA	Gas	HORIZONTAL...			
Casing Strings							
Surface, 419.0ftKB							
Casing Description Surface	Run Date 7/9/1994	OD (in) 7	Wt/Len (l... 17.00	Grade	Top, MD (ft... 10.0	MD (ftKB) 419.0	
Production, 7,055.0ftKB							
Casing Description Production	Run Date 7/13/1994	OD (in) 3 1/2	Wt/Len (l... 7.70	Grade M-75	Top, MD (ft... 10.0	MD (ftKB) 7,055.0	
Cement							
Description SURFACE CASING CEMENT				Top Depth (ftKB) 10.0		Bottom Depth (ftKB) 419.0	
Description PRODUCTION CASING CEMENT				Top Depth (ftKB) 6,129.0		Bottom Depth (ftKB) 7,055.0	
Description DUMP BAIL				Top Depth (ftKB) 6,547.0		Bottom Depth (ftKB) 6,592.0	
Description COURTESY PLUG				Top Depth (ftKB) 1,927.0		Bottom Depth (ftKB) 2,146.0	
Description COURTESY PLUG				Top Depth (ftKB) 2,148.0		Bottom Depth (ftKB) 2,248.0	
Description COURTESY PLUG				Top Depth (ftKB) 1,748.0		Bottom Depth (ftKB) 2,248.0	
Description SHOE PLUG				Top Depth (ftKB) 9.8		Bottom Depth (ftKB) 419.0	
Description SHOE PLUG				Top Depth (ftKB) 419.0		Bottom Depth (ftKB) 619.0	
Tubing Strings							
Tubing Description Tubing - Production	Run Date 7/12/2005	String... 2 1/16	ID (in) 1.75	Wt (lb/ft) 3.25	Grade J-55	Len (ft) 6,917.00	Set De...
Tubing Components							
Item Des	OD (in)	Wt (lb/ft)	Grade	Jts	Len (ft)	Btm (ftKB)	Btm (TVD) (ftKB)
Tubing	2 1/16	3.25	J-55	214	6,915.95	6,926.0	
Seal Nipple	2 1/16			1	0.52	6,926.5	
Notched collar	2 1/16			1	0.53	6,927.0	
Tubing Description Tubing - Production	Run Date 5/6/2009	String... 2 1/16	ID (in) 1.75	Wt (lb/ft) 3.25	Grade J-55	Len (ft) 6,934.06	Set De...

**Well Name: CLARK 14-10H5**

VERTICAL - ORIGINAL HOLE, 11/2/2017 11:04:19 AM



Tubing Components							
Item Des	OD (in)	Wt (lb/ft)	Grade	Jts	Len (ft)	Btm (ftKB)	Btm (TVD) (ftKB)
Tubing	2 1/16	3.25	J-55	216	6,932.96	6,941.5	
Notched Seating Nipple	2 1/16			1	1.10	6,942.6	
Tubing Description	Run Date	String ...	ID (in)	Wt (lb/ft)	Grade	Len (ft)	Set De...
Tubing - Production	1/13/2014	2 1/16	1.75	3.25	J-55	6,922.20	

Tubing Components							
Item Des	OD (in)	Wt (lb/ft)	Grade	Jts	Len (ft)	Btm (ftKB)	Btm (TVD) (ftKB)
Tubing	2 1/16	3.25	J-55	215	6,920.60	6,930.6	
Notched Pump Seating Nipple	2 1/16			1	1.60	6,932.2	

Other In Hole				
Run Date	Des	OD (in)	Top (ftKB)	Btm (ftKB)
8/27/2017	Cast Iron Bridge Plug	2.99	6,592.0	6,594.0
8/27/2017	CICR	2.99	2,146.0	2,148.0

Logs			
Date	Type	Top, MD (ftKB)	Btm, MD (ftKB)
7/13/1994	INDUCTION	418.0	7,078.0
7/20/1994	GAMMA RAY	6,450.0	6,997.0
1/26/2015	GYRO	0.0	6,850.0

Perforation Data					
Linked Zone	Bnch/St g	Sum of Entered Shot Total	Top (ftKB)	Btm (ftKB)	Date
NIOBRARA, ORIGINAL HOLE		0	2,248.00	2,248.00	8/27/2017
NIOBRARA, ORIGINAL HOLE		120	6,644.00	6,664.00	6/2/2005
NIOBRARA, ORIGINAL HOLE		2	6,658.00	6,659.00	7/20/1994
NIOBRARA, ORIGINAL HOLE		120	6,768.00	6,788.00	6/2/2005
NIOBRARA, ORIGINAL HOLE		4	6,782.00	6,785.00	7/20/1994
CODELL, ORIGINAL HOLE		30	6,954.00	6,963.00	8/4/1998
CODELL, ORIGINAL HOLE		9	6,954.00	6,963.00	7/20/1994

<b>Total (Sum)</b>	<b>285</b>			
--------------------	------------	--	--	--

Stimulation Intervals		
Start Date	Primary Job Type	
8/1/1994	DRILLING/COMPLETION - ORIGINAL	
Technical Result	Tech Result Details	Tech Result Note
Comment		
Start Date	Primary Job Type	
8/12/1998	RE-FRAC	
Technical Result	Tech Result Details	Tech Result Note
Comment		
Start Date	Primary Job Type	
10/7/2003	TRI-FRAC	
Technical Result	Tech Result Details	Tech Result Note
Comment		
Start Date	Primary Job Type	
6/29/2005	RE-FRAC	
Technical Result	Tech Result Details	Tech Result Note
Comment		