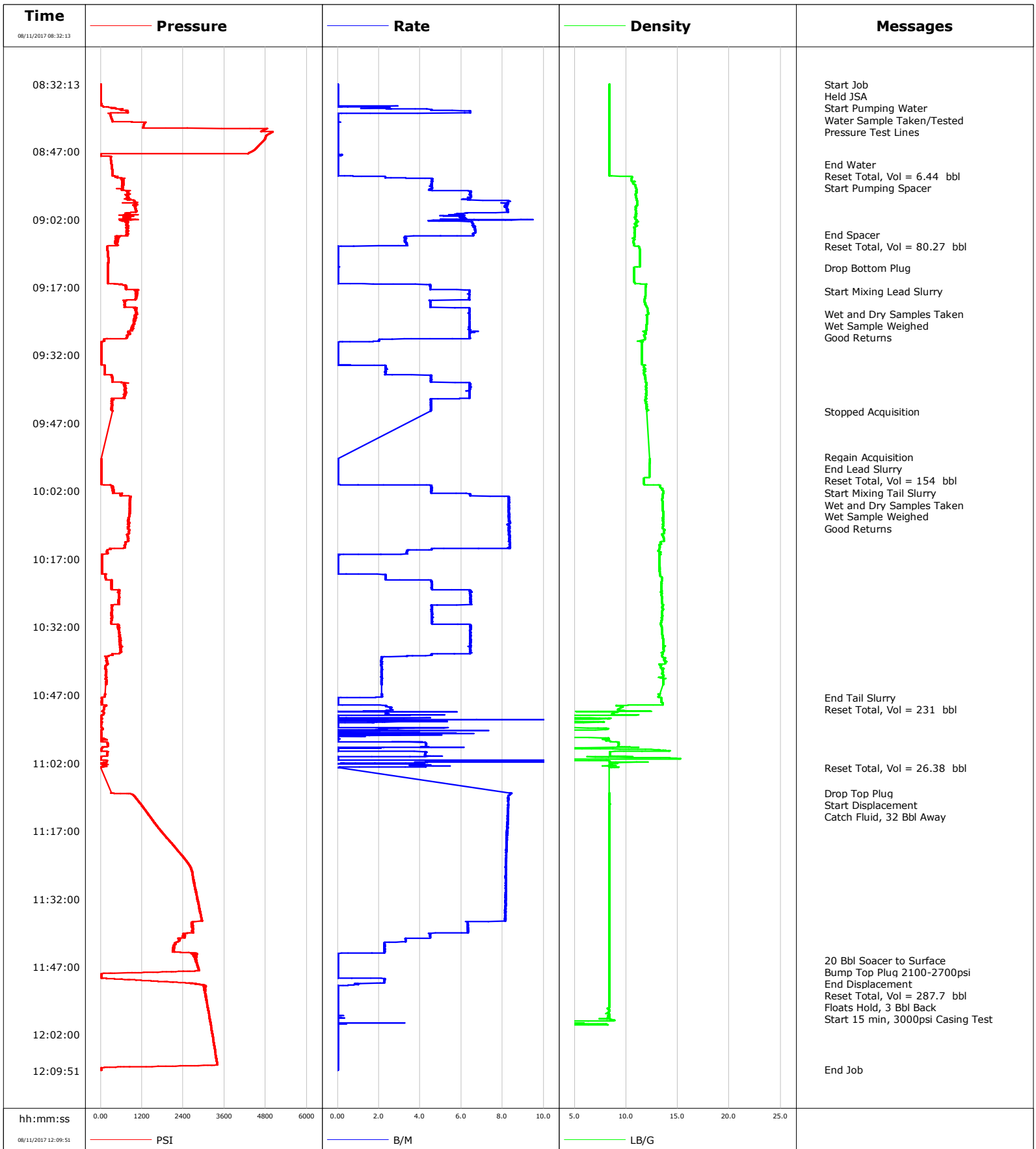


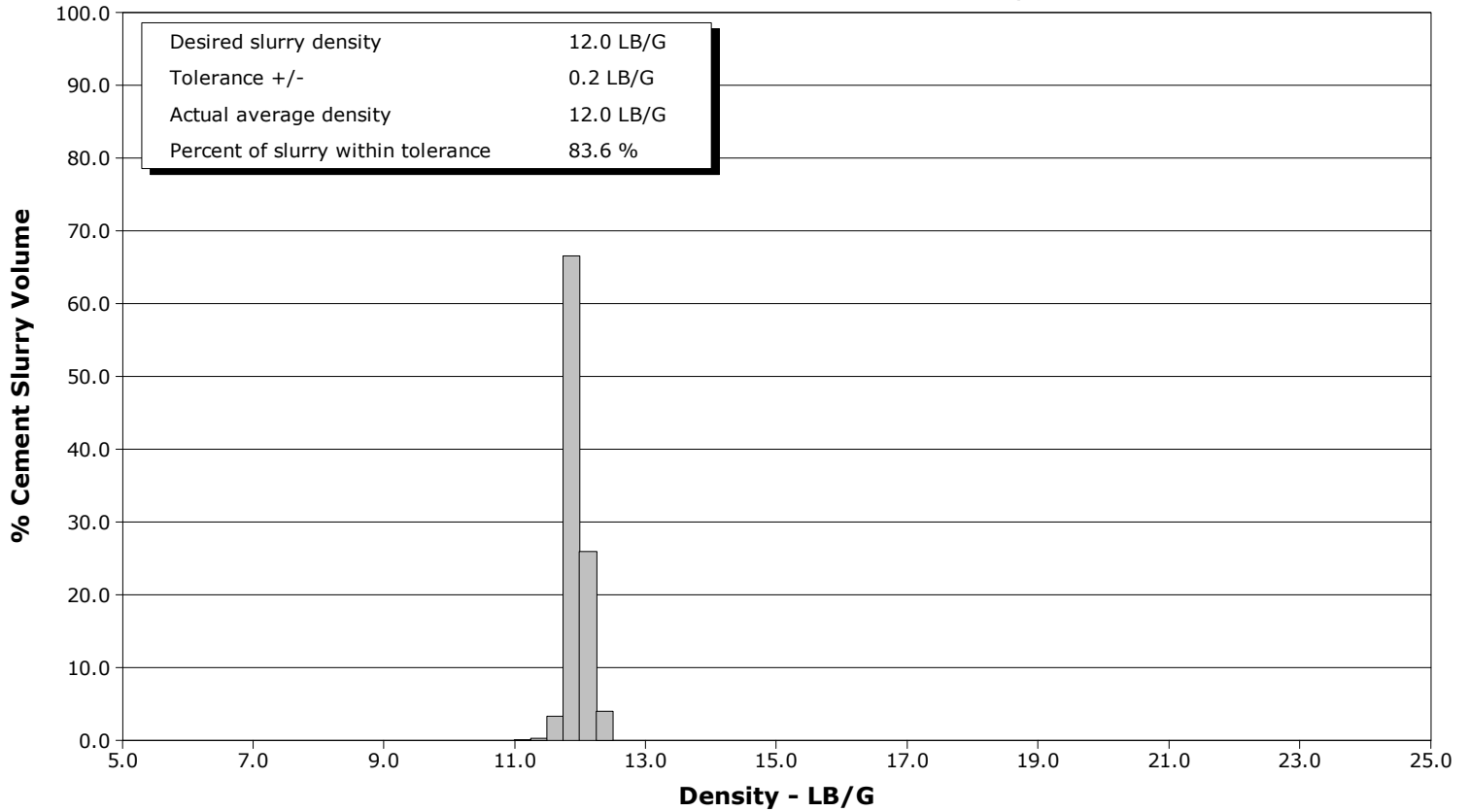
<b>Well</b>	Cannon 28N-E4HZ	<b>Client</b>	Anadarko
<b>Field</b>	Wattenberg	<b>SIR No.</b>	D5VO-02090
<b>Engineer</b>	Ryan Drilling/Ken Sovereign	<b>Job Type</b>	5.5" Production
<b>Country</b>	United States	<b>Job Date</b>	08-11-2017



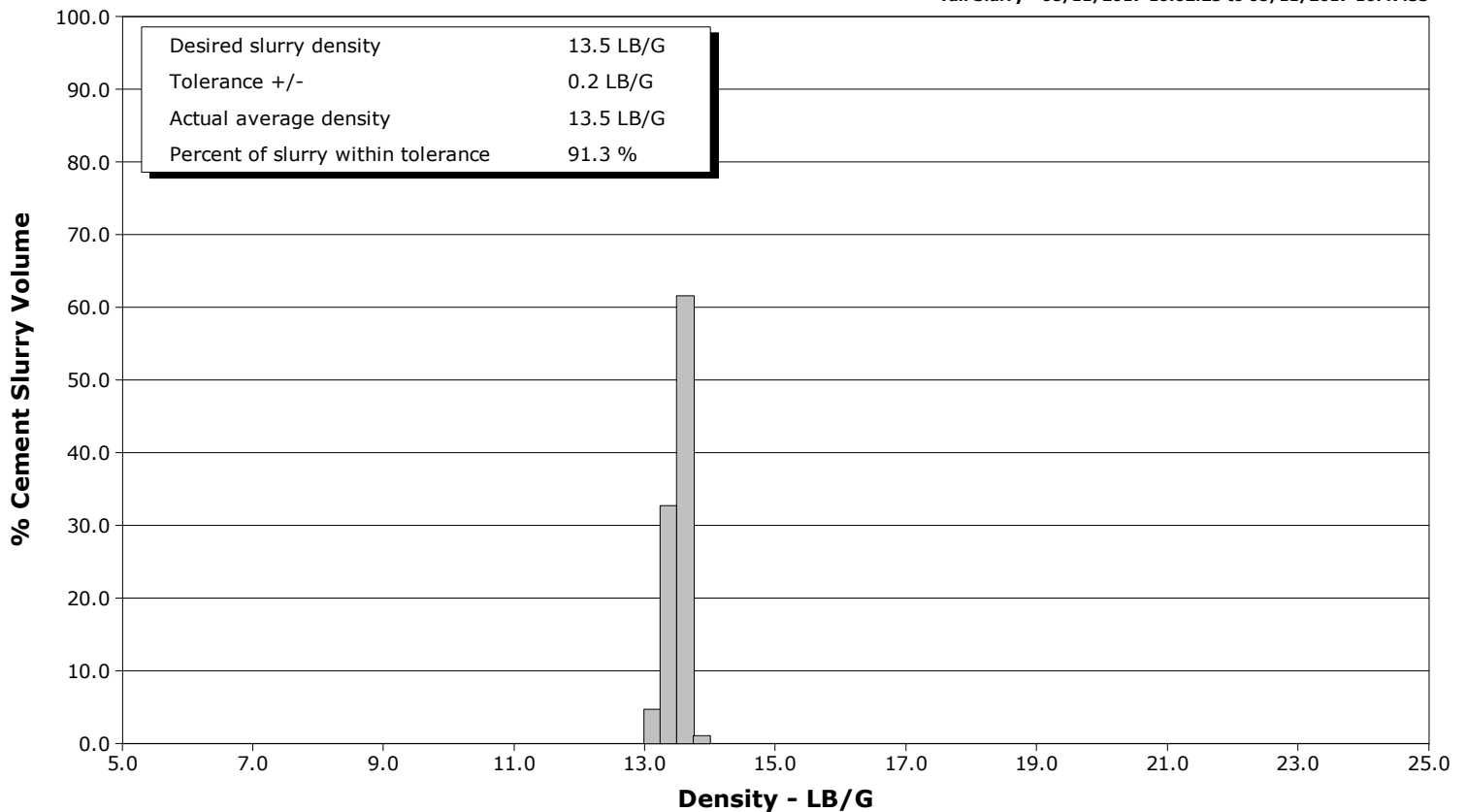
**Well** Cannon 28N-E4HZ  
**Field** Wattenberg  
**Engineer** Ryan Drilling/Ken Sovereign  
**Country** United States

**Client** Anadarko  
**SIR No.** D5VO-02090  
**Job Type** 5.5" Production  
**Job Date** 08-11-2017

**Lead Slurry - 08/11/2017 09:17:51 to 08/11/2017 09:54:40**



**Tail Slurry - 08/11/2017 10:02:25 to 08/11/2017 10:47:33**



				Customer			Job Number		
				Anadarko			D5VO-02090		
Well		Location (legal)			Schlumberger Location			Job Start	
Cannon 28N-E4HZ		CWY			CWY			Aug/11/2017	
Field		Formation Name/Type		Deviation	Bit Size	Well MD		Well TVD	
Wattenberg		Shale		90 deg	7.9 in	13066.0 ft		7076.0 ft	
County		State/Province		BHP	BHST	BHCT	Pore Press. Gradient		
Weld		Colorado		psi	226 degF	220 degF	lb/gal		
Well Master		API/UWI							
0631719460									
Rig Name	Drilled For		Service Via	Casing/Liner					
Precision 564	Oil & Gas		Land	Depth, ft		Size, in	Weight, lb/ft	Grade	Thread
Offshore Zone	Well Class		Well Type	1895.0	9.6	36.0	j55	lrc	
	New		Development	13066.0	5.5	20.0	p110	lrc	
Drilling Fluid Type		Max. Density	Plastic Viscosity	Tubing/Drill Pipe					
		lb/gal	cP	T/D	Depth, ft	Size, in	Weight, lb/ft	Grade	Thread
Service Line	Job Type								
Cementing	5.5" Production								
Max. Allowed Tub. Press	Max. Allowed Ann. Press	WH Connection		Perforations/Open Hole					
psi	psi	Double Cement head		Top, ft	Bottom, ft	shot/ft	No. of Shots	Total Interval	
<b>Service Instructions</b> Lead: 470 sks, 1.84 Yield, Top 1,500 ft. Tail: 790 sks, 1.66 Yield, Top 6000 ft.				ft	ft			ft	
				ft	ft			Diameter	
				ft	ft			in	
Treat Down		Displacement		Packer Type		Packer Depth			
Casing		287.7 bbl				ft			
Tubing Vol.		Casing Vol.		Annular Vol.		Openhole Vol.			
bbl		bbl		bbl		bbl			
Casing/Tubing Secured		1 Hole Vol. Circulated prior to Cement		Casing Tools			Squeeze Job		
<input checked="" type="checkbox"/>		<input checked="" type="checkbox"/>							
Lift Pressure		Shoe Type		Shoe Depth		Squeeze Type			
2100 psi		Float		13066.0 ft					
Pipe Rotated		Pipe Reciprocated		Stage Tool Type		Tool Type			
<input type="checkbox"/>		<input type="checkbox"/>							
No. Centralizers		Top Plugs	Bottom Plugs	Stage Tool Depth		Tool Depth		ft	
		1	1	ft					
Cement Head Type		Stage Tool Depth		Tail Pipe Size					
Double		ft		in					
Job Scheduled For		Arrived on Location	Leave Location	Collar Type		Tail Pipe Depth		ft	
Aug/11/2017 05:30		Aug/11/2017 05:30	Aug/11/2017 13:30	Float					
				Collar Depth		Sqz. Total Vol.		bbl	
				12974.0 ft					
Date	Time 24-hr clock	Treating Pressure PSI	Flow Rate B/M	Density LB/G	Volume BBL	Message			
08/11/2017	08:32:13	5	0.0	8.37	0.0	Started Acquisition			
08/11/2017	08:32:14	5	0.0	8.37	0.0	Start Job			
08/11/2017	08:32:16	6	0.0	8.37	0.0	Held JSA			
08/11/2017	08:32:18	5	0.0	8.37	0.0	Start Pumping Water			
08/11/2017	08:32:21	5	0.0	8.37	0.0	Water Sample Taken/Tested			
08/11/2017	08:32:22	6	0.0	8.37	0.0	Pressure Test Lines			
08/11/2017	08:33:13	6	0.0	8.37	0.0				
08/11/2017	08:34:13	5	0.0	8.37	0.0				
08/11/2017	08:35:13	6	0.0	8.37	0.0				
08/11/2017	08:36:13	5	0.0	8.37	0.0				
08/11/2017	08:37:13	72	0.2	8.37	0.2				
08/11/2017	08:38:13	741	6.4	8.37	3.7				
08/11/2017	08:39:13	288	0.0	8.37	6.4				
08/11/2017	08:40:13	335	0.0	8.37	6.4				
08/11/2017	08:41:13	1255	0.0	8.37	6.4				
08/11/2017	08:42:13	4789	0.0	8.37	6.4				
08/11/2017	08:43:13	4897	0.0	8.37	6.4				
08/11/2017	08:44:13	4785	0.0	8.37	6.4				
08/11/2017	08:45:13	4672	0.0	8.37	6.4				
08/11/2017	08:46:13	4543	0.0	8.37	6.4				
08/11/2017	08:47:13	4367	0.0	8.37	6.4				

Well Cannon 28N-E4HZ			Field Wattenberg		Job Start Aug/11/2017	Customer Anadarko		Job Number D5VO-02090
Date	Time 24-hr clock	Treating Pressure PSI	Flow Rate B/M	Density LB/G	Volume BBL	Message		
08/11/2017	08:49:13	304	0.0	8.37	0.0			
08/11/2017	08:49:53	315	0.0	8.37	0.0	End Water		
08/11/2017	08:49:55	316	0.0	8.37	0.0	Reset Total, Vol = 6.44 bbl		
08/11/2017	08:50:13	321	0.0	8.37	0.0			
08/11/2017	08:51:13	331	0.0	8.37	0.0			
08/11/2017	08:52:13	330	0.0	8.37	0.0			
08/11/2017	08:52:53	482	2.3	10.56	0.8	Start Pumping Spacer		
08/11/2017	08:53:13	641	4.6	10.52	2.1			
08/11/2017	08:54:13	623	4.6	10.68	6.7			
08/11/2017	08:55:13	645	4.6	10.97	11.3			
08/11/2017	08:56:13	782	6.5	10.99	16.8			
08/11/2017	08:57:13	826	6.4	10.97	23.2			
08/11/2017	08:58:13	1000	8.3	11.05	30.2			
08/11/2017	08:59:13	1020	8.2	10.92	38.5			
08/11/2017	09:00:13	1061	8.2	10.98	46.7			
08/11/2017	09:01:13	810	6.1	10.93	53.5			
08/11/2017	09:02:13	699	8.2	11.01	59.7			
08/11/2017	09:03:13	788	6.6	10.85	65.9			
08/11/2017	09:04:13	760	6.7	10.83	72.5			
08/11/2017	09:05:13	766	6.6	10.83	79.2			
08/11/2017	09:05:21	764	6.6	10.83	80.1	End Spacer		
08/11/2017	09:05:23	745	6.6	10.83	80.3	Reset Total, Vol = 80.27 bbl		
08/11/2017	09:06:13	425	3.3	10.64	84.2			
08/11/2017	09:07:13	463	3.3	10.68	87.5			
08/11/2017	09:08:13	188	0.0	11.25	89.9			
08/11/2017	09:09:13	204	0.0	11.35	89.9			
08/11/2017	09:10:13	215	0.0	11.34	0.0			
08/11/2017	09:11:13	216	0.0	11.34	0.0			
08/11/2017	09:12:13	213	0.0	11.33	0.0			
08/11/2017	09:12:47	212	0.0	10.76	0.0	Drop Bottom Plug		
08/11/2017	09:13:13	211	0.0	10.76	0.0			
08/11/2017	09:14:13	210	0.0	10.76	0.0			
08/11/2017	09:15:13	208	0.0	10.76	0.0			
08/11/2017	09:16:13	208	0.0	10.84	0.0			
08/11/2017	09:17:13	748	4.5	11.87	3.9			
08/11/2017	09:17:51	1063	6.4	11.87	7.2	Start Mixing Lead Slurry		
08/11/2017	09:18:13	1029	6.4	11.87	9.6			
08/11/2017	09:19:13	1035	6.4	11.82	16.0			
08/11/2017	09:20:13	701	4.5	11.77	21.7			
08/11/2017	09:21:13	701	4.5	11.95	26.2			
08/11/2017	09:22:13	1025	6.4	12.08	32.0			
08/11/2017	09:22:53	1020	6.4	12.14	36.2	Wet and Dry Samples Taken		
08/11/2017	09:22:54	1029	6.4	12.14	36.3	Good Returns		
08/11/2017	09:23:13	1032	6.4	11.96	38.4			
08/11/2017	09:24:13	1014	6.4	11.99	44.8			
08/11/2017	09:25:13	948	6.4	11.99	51.1			
08/11/2017	09:26:13	891	6.4	11.97	57.5			
08/11/2017	09:27:13	851	6.4	11.92	64.0			
08/11/2017	09:28:13	761	6.4	11.80	70.3			
08/11/2017	09:29:13	19	0.0	11.52	73.0			
08/11/2017	09:30:13	20	0.0	11.53	73.0			
08/11/2017	09:31:13	19	0.0	11.53	73.0			
08/11/2017	09:32:13	18	0.0	11.54	73.0			
08/11/2017	09:33:13	18	0.0	11.54	73.0			

Well Cannon 28N-E4HZ			Field Wattenberg		Job Start Aug/11/2017	Customer Anadarko	Job Number D5VO-02090
Date	Time 24-hr clock	Treating Pressure PSI	Flow Rate B/M	Density LB/G	Volume BBL	Message	
08/11/2017	09:35:13	121	2.3	11.76	75.2		
08/11/2017	09:36:13	117	2.3	11.74	77.6		
08/11/2017	09:37:13	350	4.5	11.84	81.7		
08/11/2017	09:38:13	752	6.4	11.95	86.6		
08/11/2017	09:39:13	706	6.4	11.95	93.0		
08/11/2017	09:40:13	742	6.4	11.96	99.4		
08/11/2017	09:41:13	690	6.4	11.89	105.8		
08/11/2017	09:42:13	316	4.5	11.91	111.1		
08/11/2017	09:43:13	327	4.5	11.98	115.6		
08/11/2017	09:44:13	316	4.5	12.10	120.1		
08/11/2017	09:44:24	353	4.5	12.03	120.9	Stopped Acquisition	
08/11/2017	09:55:13	21	0.0	12.30	154.2		
08/11/2017	09:56:13	21	0.0	12.27	154.2		
08/11/2017	09:57:13	21	0.0	12.25	154.2		
08/11/2017	09:58:13	20	0.0	12.25	154.2		
08/11/2017	09:59:13	21	0.0	11.71	154.2		
08/11/2017	10:00:13	21	0.0	11.72	154.2		
08/11/2017	10:01:13	366	4.6	13.30	156.7		
08/11/2017	10:02:13	350	4.6	13.58	161.2		
08/11/2017	10:02:25	379	4.5	13.58	162.1	Start Mixing Tail Slurry	
08/11/2017	10:02:27	373	4.6	13.57	162.3	Wet and Dry Samples Taken	
08/11/2017	10:02:28	347	4.6	13.57	162.4	Good Returns	
08/11/2017	10:03:13	862	8.3	13.54	167.2		
08/11/2017	10:04:13	853	8.3	13.52	175.5		
08/11/2017	10:05:13	849	8.3	13.53	183.8		
08/11/2017	10:06:13	843	8.3	13.56	192.1		
08/11/2017	10:07:13	844	8.3	13.59	200.4		
08/11/2017	10:08:13	807	8.3	13.57	208.7		
08/11/2017	10:09:13	815	8.3	13.60	217.1		
08/11/2017	10:10:13	803	8.3	13.54	225.4		
08/11/2017	10:11:13	814	8.3	13.66	233.7		
08/11/2017	10:12:13	790	8.3	13.60	242.0		
08/11/2017	10:13:13	772	8.3	13.38	250.3		
08/11/2017	10:14:13	712	8.3	13.26	258.5		
08/11/2017	10:15:13	174	3.4	13.10	264.7		
08/11/2017	10:16:13	31	0.0	13.22	267.2		
08/11/2017	10:17:13	30	0.0	13.23	267.2		
08/11/2017	10:18:13	30	0.0	13.23	267.2		
08/11/2017	10:19:13	30	0.0	13.23	267.2		
08/11/2017	10:20:13	30	0.0	13.23	267.2		
08/11/2017	10:21:13	144	2.3	13.47	269.3		
08/11/2017	10:22:13	328	4.6	13.41	272.9		
08/11/2017	10:23:13	326	4.6	13.40	277.4		
08/11/2017	10:24:13	519	6.4	13.42	282.8		
08/11/2017	10:25:13	529	6.5	13.44	289.2		
08/11/2017	10:26:13	523	6.4	13.44	295.7		
08/11/2017	10:27:13	336	4.6	13.57	301.9		
08/11/2017	10:28:13	333	4.6	13.56	306.5		
08/11/2017	10:29:13	326	4.6	13.45	311.1		
08/11/2017	10:30:13	317	4.6	13.48	315.6		
08/11/2017	10:31:13	314	4.6	13.36	320.2		
08/11/2017	10:32:13	537	6.4	13.44	326.3		
08/11/2017	10:33:13	544	6.4	13.50	332.7		
08/11/2017	10:34:13	567	6.4	13.54	339.2		

Well Cannon 28N-E4HZ			Field Wattenberg		Job Start Aug/11/2017	Customer Anadarko		Job Number D5VO-02090
Date	Time 24-hr clock	Treating Pressure PSI	Flow Rate B/M	Density LB/G	Volume BBL	Message		
08/11/2017	10:36:13	591	6.4	13.76	352.1			
08/11/2017	10:37:13	590	6.4	13.63	358.5			
08/11/2017	10:38:13	350	4.5	13.51	364.4			
08/11/2017	10:39:13	176	2.1	13.64	367.0			
08/11/2017	10:40:13	202	2.2	13.21	369.1			
08/11/2017	10:41:13	143	2.2	13.60	371.3			
08/11/2017	10:42:13	159	2.1	13.48	373.4			
08/11/2017	10:43:13	149	2.1	13.36	375.5			
08/11/2017	10:44:13	161	2.1	13.60	377.7			
08/11/2017	10:47:13	120	2.1	13.20	384.1			
08/11/2017	10:47:33	36	1.1	13.30	384.8	End Tail Slurry		
08/11/2017	10:47:35	29	0.2	13.39	384.8	Reset Total, Vol = 231 bbl		
08/11/2017	10:48:13	29	0.0	13.39	384.8			
08/11/2017	10:49:13	123	0.2	13.38	0.0			
08/11/2017	10:50:13	94	2.6	9.21	2.4			
08/11/2017	10:51:13	82	2.3	8.61	4.7			
08/11/2017	10:52:13	44	1.9	8.21	5.8			
08/11/2017	10:53:13	10	0.0	2.90	7.2			
08/11/2017	10:54:13	21	0.0	4.26	7.2			
08/11/2017	10:55:13	18	0.0	3.20	8.8			
08/11/2017	10:56:13	27	0.0	0.21	9.6			
08/11/2017	10:57:13	8	0.0	8.46	9.6			
08/11/2017	10:58:13	202	4.3	9.22	13.4			
08/11/2017	10:59:13	24	0.0	13.66	15.0			
08/11/2017	11:00:13	186	4.2	8.42	18.2			
08/11/2017	11:01:13	12	0.0	0.56	19.9			
08/11/2017	11:02:13	7	0.0	8.68	23.7			
08/11/2017	11:03:03	7	0.0	8.38	26.4	Reset Total, Vol = 26.38 bbl		
08/11/2017	11:08:39	322	8.4	8.38	31.9	Drop Top Plug		
08/11/2017	11:08:40	300	8.4	8.38	32.0	Start Displacement		
08/11/2017	11:08:55	912	8.4	8.38	34.1	Catch Fluid, 32 Bbl Away		
08/11/2017	11:09:13	965	8.3	8.38	36.6			
08/11/2017	11:10:13	1076	8.3	8.37	44.9			
08/11/2017	11:11:13	1181	8.3	8.38	53.1			
08/11/2017	11:12:13	1278	8.2	8.37	61.4			
08/11/2017	11:13:13	1373	8.2	8.38	69.6			
08/11/2017	11:14:13	1466	8.2	8.37	77.9			
08/11/2017	11:15:13	1571	8.2	8.38	86.1			
08/11/2017	11:16:13	1667	8.2	8.37	94.3			
08/11/2017	11:17:13	1776	8.2	8.37	102.6			
08/11/2017	11:18:13	1887	8.2	8.37	110.8			
08/11/2017	11:19:13	2001	8.2	8.37	119.0			
08/11/2017	11:20:13	2117	8.2	8.37	127.2			
08/11/2017	11:21:13	2229	8.2	8.37	135.3			
08/11/2017	11:22:13	2341	8.2	8.37	143.5			
08/11/2017	11:23:13	2450	8.2	8.37	151.7			
08/11/2017	11:24:13	2548	8.2	8.37	159.8			
08/11/2017	11:25:13	2634	8.2	8.37	168.0			
08/11/2017	11:26:13	2663	8.2	8.37	176.1			
08/11/2017	11:27:13	2688	8.2	8.37	184.3			
08/11/2017	11:28:13	2710	8.1	8.37	192.4			
08/11/2017	11:29:13	2740	8.2	8.37	200.6			
08/11/2017	11:30:13	2767	8.2	8.37	208.7			
08/11/2017	11:31:13	2798	8.1	8.37	216.9			

Well Cannon 28N-E4HZ			Field Wattenberg		Job Start Aug/11/2017	Customer Anadarko	Job Number D5VO-02090
Date	Time 24-hr clock	Treating Pressure PSI	Flow Rate B/M	Density LB/G	Volume BBL	Message	
08/11/2017	11:33:13	2850	8.1	8.37	233.1		
08/11/2017	11:34:13	2872	8.1	8.37	241.3		
08/11/2017	11:35:13	2907	8.1	8.37	249.4		
08/11/2017	11:36:13	2929	8.1	8.37	257.5		
08/11/2017	11:37:13	2676	6.3	8.37	265.2		
08/11/2017	11:38:13	2653	6.3	8.37	271.5		
08/11/2017	11:39:13	2654	6.3	8.37	277.8		
08/11/2017	11:40:13	2454	4.5	8.37	282.9		
08/11/2017	11:41:13	2307	3.3	8.37	286.7		
08/11/2017	11:42:13	2125	2.3	8.37	289.3		
08/11/2017	11:43:13	2137	2.3	8.37	291.6		
08/11/2017	11:44:13	2758	0.0	8.37	293.3		
08/11/2017	11:45:13	2742	0.0	8.37	293.3		
08/11/2017	11:45:25	2755	0.0	8.37	293.3	20 Bbl Soacer to Surface	
08/11/2017	11:45:28	2791	0.0	8.37	293.3	Bump Top Plug 2100-2700psi	
08/11/2017	11:45:30	2756	0.0	8.37	293.3	End Displacement	
08/11/2017	11:46:13	2791	0.0	8.37	293.3		
08/11/2017	11:46:35	2806	0.0	8.37	293.3	Reset Total, Vol = 287.7 bbl	
08/11/2017	11:47:13	2830	0.0	8.37	293.3		
08/11/2017	11:48:13	1261	0.0	8.37	293.3		
08/11/2017	11:48:48	21	0.0	8.37	293.3	Floats Hold, 3 Bbl Back	
08/11/2017	11:49:13	22	0.0	8.37	293.3		
08/11/2017	11:50:13	1697	2.3	8.37	294.9		
08/11/2017	11:51:13	3044	0.0	8.37	296.2		
08/11/2017	11:52:10	3014	0.0	8.37	296.2	Start 15 min, 3000psi Casing Test	
08/11/2017	11:52:13	3024	0.0	8.37	296.2		
08/11/2017	11:53:13	3043	0.0	8.37	296.2		
08/11/2017	11:54:13	3066	0.0	8.38	296.2		
08/11/2017	11:55:13	3094	0.0	8.37	296.2		
08/11/2017	11:56:13	3121	0.0	8.28	296.2		
08/11/2017	11:57:13	3143	0.0	8.32	296.2		
08/11/2017	11:58:13	3166	0.0	8.22	296.2		
08/11/2017	11:59:13	3189	0.0	0.11	296.2		
08/11/2017	12:00:13	3210	0.0	0.07	296.3		
08/11/2017	12:01:13	3233	0.0	0.05	296.3		
08/11/2017	12:02:13	3255	0.0	0.05	296.3		
08/11/2017	12:03:13	3276	0.0	0.05	296.3		
08/11/2017	12:04:13	3298	0.0	0.04	296.3		
08/11/2017	12:05:13	3319	0.0	0.04	296.3		
08/11/2017	12:06:13	3339	0.0	0.04	296.3		
08/11/2017	12:07:13	3360	0.0	0.04	296.3		
08/11/2017	12:08:13	3380	0.0	0.04	296.3		
08/11/2017	12:09:13	45	0.0	0.04	296.3		

<b>Well</b> Cannon 28N-E4HZ	<b>Field</b> Wattenberg	<b>Job Start</b> Aug/11/2017	<b>Customer</b> Anadarko	<b>Job Number</b> D5VO-02090
--------------------------------	----------------------------	---------------------------------	-----------------------------	---------------------------------

### Post Job Summary

Average Pump Rates, bbl/min					Volume of Fluid Injected, bbl			
<b>Slurry</b> 6.0	<b>N2</b>	<b>Mud</b>	<b>Maximum Rate</b> 8.4	<b>Total Slurry</b> 385.0	<b>Mud</b> 0.0	<b>Spacer</b> 80.0	<b>N2</b>	
Treating Pressure Summary, psi					Breakdown Fluid			
<b>Maximum</b> 3388	<b>Final</b> 20	<b>Average</b> 1350	<b>Bump Plug to</b> 2700	<b>Breakdown</b>	<b>Type</b>	<b>Volume</b> bbl	<b>Density</b> lb/gal	
<b>Avg. N2 Percent</b> %	<b>Designed Slurry Volume</b> 380.0 bbl	<b>Displacement</b> 287.7 bbl	<b>Mix Water Temp</b> 75 degF	<b>Cement Circulated to Surface?</b> <input type="checkbox"/>	<b>Volume</b> bbl			
				<b>Washed Thru Perfs</b> <input type="checkbox"/>	<b>To</b> ft			
<b>Customer or Authorized Representative</b> Joe Wallem			<b>Schlumberger Supervisor</b> Ryan Drilling/Ken Sovereign		<b>Circulation Lost</b> <input type="checkbox"/>	<b>Job Completed</b> <input checked="" type="checkbox"/>		
					-	-		