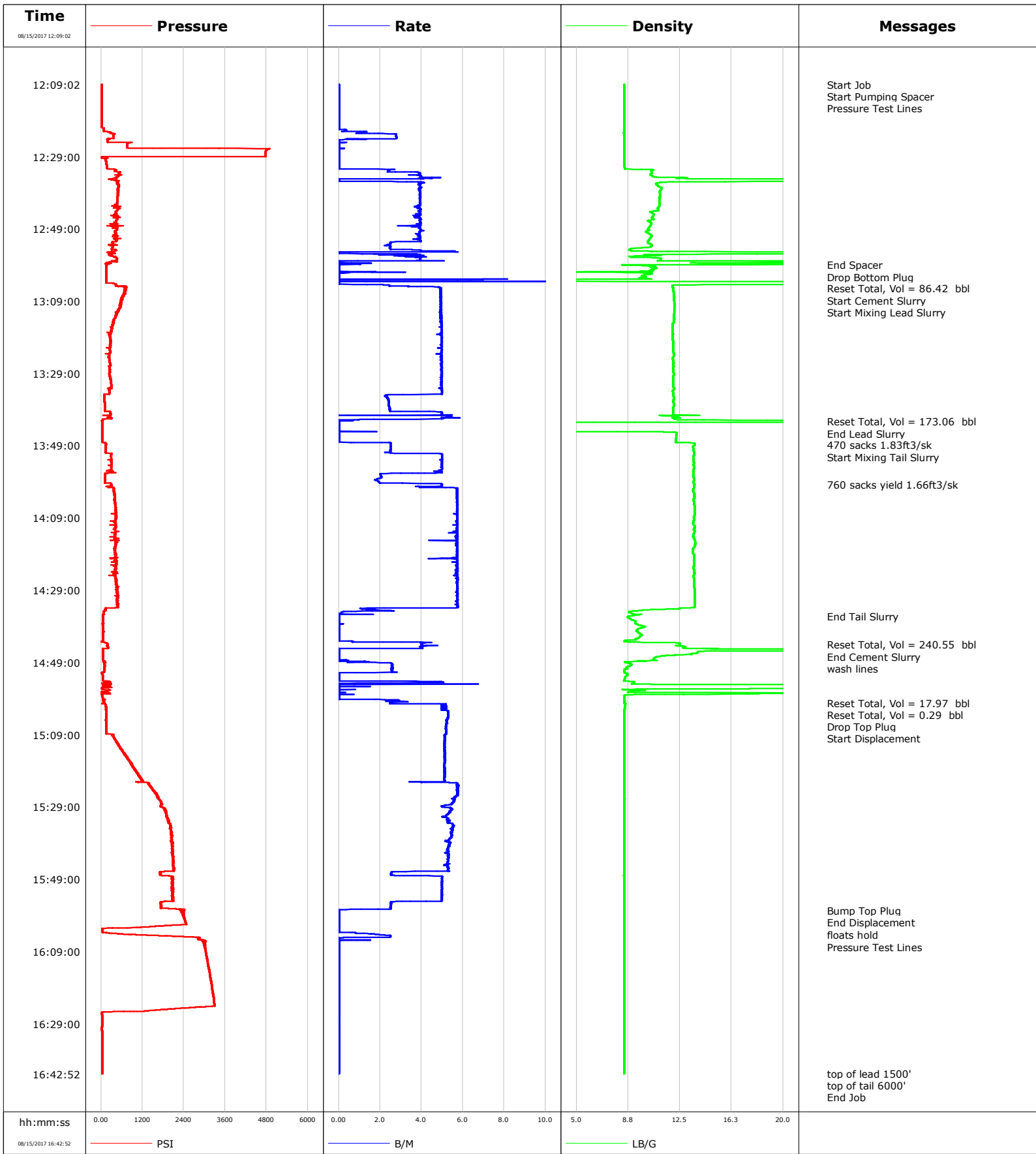


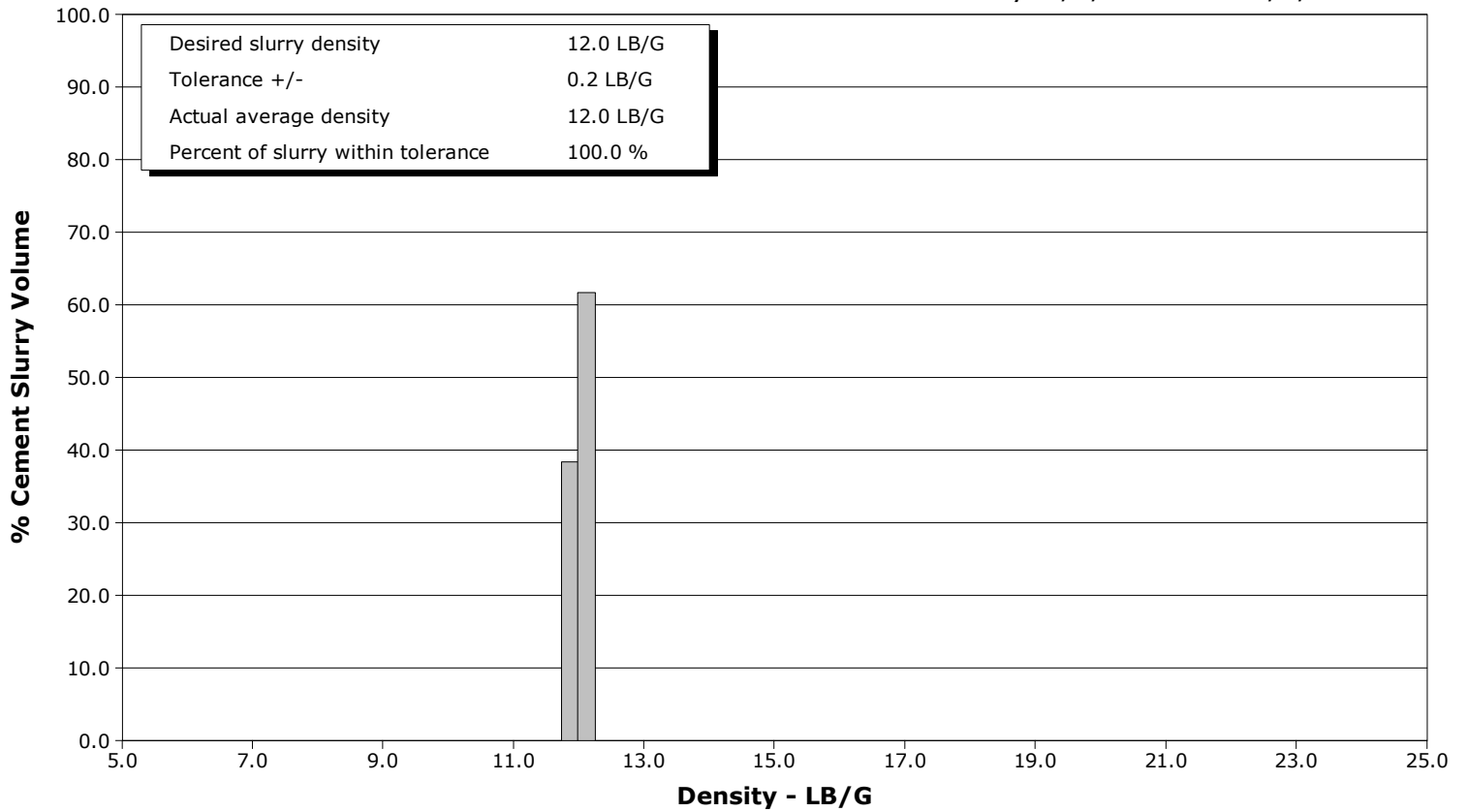
Well	CANNON 28N-W4HZ	Client	ANARDARKO
Field	WATTENBERG	SIR No.	2556718
Engineer	NORM HASLAUER	Job Type	PRODUCTION
Country	United States	Job Date	08-15-2017



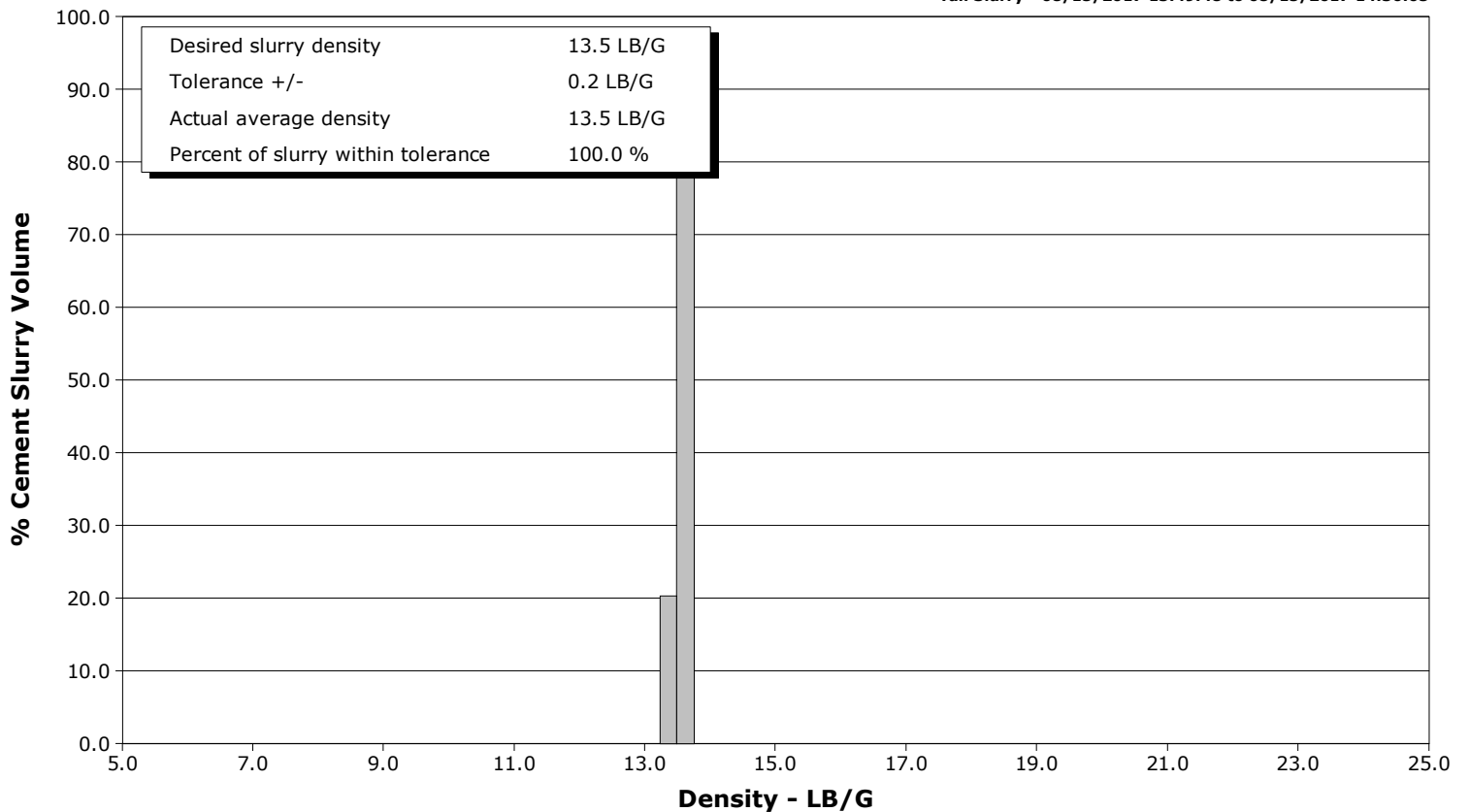
Well CANNON 28N-W4HZ
Field WATTENBERG
Engineer NORM HASLAUER
Country United States

Client ANARDARKO
SIR No. 2556718
Job Type PRODUCTION
Job Date 08-15-2017

Lead Slurry - 08/15/2017 13:07:34 to 08/15/2017 13:42:18



Tail Slurry - 08/15/2017 13:49:48 to 08/15/2017 14:36:05



					Customer ANARDARKO			Job Number 2556718	
Well CANNON 28N-W4HZ DMBW-01317			Location (legal)			Schlumberger Location			Job Start Aug/15/2017
Field WATTENBERG		Formation Name/Type Clean-Sandstone		Deviation deg	Bit Size in		Well MD 12861.0 m		Well TVD 6982.0 m
County WELD		State/Province Wyoming		BHP psi	BHST 225.00 degF		BHCT 219.00 degF		Pore Press. Gradient lb/gal
Well Master 0631719771		API/UWI							
Rig Name P564	Drilled For Oil		Service Via Land		Casing/Liner				
	Depth, m	Size, in	Weight, lb/ft	Grade	Thread				
Offshore Zone	Well Class New		Well Type Development		1874.0	9.6	36.0	J55	
	0.0	0.0	0.0						
Drilling Fluid Type		Max. Density lb/gal	Plastic Viscosity cP		Tubing/Drill Pipe				
	T/D	Depth, m	Size, in	Weight, lb/ft	Grade	Thread			
Service Line Cementing	Job Type PRODUCTION								
Max. Allowed Tub. Press psi	Max. Allowed Ann. Press psi		WH Connection Double Cement head		Perforations/Open Hole				
	Top, m	Bottom, m	shot/ft	No. of Shots	Total Interval m				
Service Instructions	m	m			Diameter in				
	m	m							
	m	m							
Treat Down Casing		Displacement 281.0 bbl		Packer Type		Packer Depth m			
Tubing Vol. bbl		Casing Vol. 285.0 bbl		Annular Vol. bbl		Openhole Vol. bbl			
Casing/Tubing Secured <input checked="" type="checkbox"/>		1 Hole Vol. Circulated prior to Cement <input checked="" type="checkbox"/>		Casing Tools			Squeeze Job		
Lift Pressure 1100.0 psi		Shoe Type Float		Squeeze Type					
Pipe Rotated <input type="checkbox"/>		Pipe Reciprocated <input type="checkbox"/>		Shoe Depth 12861.0 m		Tool Type			
No. Centralizers		Top Plugs 1	Bottom Plugs 1	Stage Tool Type		Tool Depth m			
Cement Head Type		Stage Tool Depth m		Tail Pipe Size in					
Job Scheduled For Aug/15/2017		Arrived on Location Aug/15/2017		Leave Location Aug/15/2017		Collar Type Float		Tail Pipe Depth m	
						Collar Depth 12785.0 m		Sqz. Total Vol. bbl	
Date	Time 24-hr clock	Treating Pressure PSI	Flow Rate B/M	Density LB/G	Volume BBL	Solid Fraction NULL	Message		
08/15/2017	12:09:02	14.6	0.0	8.46	0.0	0	Started Acquisition		
08/15/2017	12:09:03	14.6	0.0	8.47	0.0	0	Start Job		
08/15/2017	12:09:04	14.6	0.0	8.47	0.0	0	Start Pumping Spacer		
08/15/2017	12:09:10	14.9	0.0	8.46	0.0	0	Pressure Test Lines		
08/15/2017	12:09:32	14.6	0.0	8.46	0.0	0			
08/15/2017	12:10:02	14.6	0.0	8.46	0.0	0			
08/15/2017	12:10:32	14.9	0.0	8.46	0.0	0			
08/15/2017	12:11:02	14.9	0.0	8.46	0.0	0			
08/15/2017	12:11:32	15.2	0.0	8.46	0.0	0			
08/15/2017	12:12:02	14.9	0.0	8.47	0.0	0			
08/15/2017	12:12:32	15.2	0.0	8.47	0.0	0			
08/15/2017	12:13:02	15.2	0.0	8.46	0.0	0			
08/15/2017	12:13:32	15.2	0.0	8.47	0.0	0			
08/15/2017	12:14:02	15.2	0.0	8.46	0.0	0			
08/15/2017	12:14:32	15.4	0.0	8.47	0.0	0			
08/15/2017	12:15:02	15.2	0.0	8.46	0.0	0			
08/15/2017	12:15:32	15.2	0.0	8.46	0.0	0			
08/15/2017	12:16:02	15.4	0.0	8.46	0.0	0			
08/15/2017	12:16:32	15.7	0.0	8.46	0.0	0			
08/15/2017	12:17:02	15.4	0.0	8.46	0.0	0			
08/15/2017	12:17:32	15.2	0.0	8.46	0.0	0			

Well CANNON 28N-W4HZ DMBW-01317			Field WATTENBERG		Job Start Aug/15/2017	Customer ANARDARKO		Job Number 2556718
Date	Time 24-hr clock	Treating Pressure PSI	Flow Rate B/M	Density LB/G	Volume BBL	Solid Fraction NULL	Message	
08/15/2017	12:18:32	15.2	0.0	8.46	0.0	0		
08/15/2017	12:19:02	15.4	0.0	8.46	0.0	0		
08/15/2017	12:19:32	15.7	0.0	8.46	0.0	0		
08/15/2017	12:20:02	15.7	0.0	8.46	0.0	0		
08/15/2017	12:20:32	15.7	0.0	8.46	0.0	0		
08/15/2017	12:21:02	16.0	0.0	8.46	0.0	0		
08/15/2017	12:21:32	79.3	0.0	8.46	0.0	0		
08/15/2017	12:22:02	84.4	0.2	8.46	0.2	0		
08/15/2017	12:22:32	258.1	0.9	8.46	0.7	0		
08/15/2017	12:23:02	352.8	2.8	8.46	1.9	0		
08/15/2017	12:23:32	359.6	2.8	8.46	3.3	0		
08/15/2017	12:24:02	361.4	2.8	8.46	4.7	0		
08/15/2017	12:24:32	187.7	0.0	8.47	5.0	0		
08/15/2017	12:25:02	188.8	0.0	8.46	5.0	0		
08/15/2017	12:25:32	758.2	0.0	8.46	5.0	0		
08/15/2017	12:26:02	748.2	0.0	8.46	5.0	0		
08/15/2017	12:26:32	747.9	0.0	8.46	5.0	0		
08/15/2017	12:27:02	4835.2	0.0	8.46	5.1	0		
08/15/2017	12:27:32	4778.0	0.0	8.46	5.1	0		
08/15/2017	12:28:02	4772.0	0.0	8.46	5.1	0		
08/15/2017	12:28:32	4774.8	0.0	8.46	5.1	0		
08/15/2017	12:29:02	4779.7	0.0	8.46	5.1	0		
08/15/2017	12:29:32	104.1	0.0	8.46	5.1	0		
08/15/2017	12:30:02	140.8	0.0	8.46	5.1	0		
08/15/2017	12:30:32	147.3	0.0	8.46	5.1	0		
08/15/2017	12:31:02	155.4	0.0	8.47	5.1	0		
08/15/2017	12:31:32	163.1	0.0	8.47	5.1	0		
08/15/2017	12:32:02	169.9	0.0	8.48	5.1	0		
08/15/2017	12:32:32	382.8	1.9	8.79	5.2	17		
08/15/2017	12:33:02	412.9	2.4	10.43	6.4	17		
08/15/2017	12:33:32	524.7	3.9	10.44	8.0	18		
08/15/2017	12:34:02	537.3	3.9	10.38	9.9	23		
08/15/2017	12:34:32	486.4	4.0	10.56	11.9	29		
08/15/2017	12:35:02	432.9	4.5	12.30	14.0	44		
08/15/2017	12:35:32	347.6	0.0	25.00	14.8	51		
08/15/2017	12:36:02	458.9	3.6	12.44	15.2	50		
08/15/2017	12:36:32	515.6	3.9	10.76	17.2	46		
08/15/2017	12:37:02	504.7	3.9	10.88	19.2	41		
08/15/2017	12:37:32	513.0	4.0	11.12	21.1	36		
08/15/2017	12:38:02	481.8	3.9	11.17	23.1	31		
08/15/2017	12:38:32	480.1	3.9	11.05	25.1	27		
08/15/2017	12:39:02	487.2	3.9	11.04	27.0	24		
08/15/2017	12:39:32	493.8	3.9	11.05	29.0	24		
08/15/2017	12:40:02	481.5	3.9	11.04	31.0	24		
08/15/2017	12:40:32	491.0	3.9	11.03	32.9	23		
08/15/2017	12:41:02	473.2	3.9	11.01	34.9	20		
08/15/2017	12:41:32	476.1	3.9	11.02	36.8	19		
08/15/2017	12:42:02	467.8	3.9	11.02	38.8	19		
08/15/2017	12:42:32	451.2	3.9	11.03	40.8	20		
08/15/2017	12:43:02	431.2	3.9	10.93	42.7	21		
08/15/2017	12:43:32	509.3	3.9	10.87	44.6	22		
08/15/2017	12:44:02	463.2	3.9	10.85	46.6	29		
08/15/2017	12:44:32	438.6	3.9	10.42	48.6	35		
08/15/2017	12:45:02	450.6	3.9	10.61	50.5	34		

Well CANNON 28N-W4HZ DMBW-01317			Field WATTENBERG		Job Start Aug/15/2017	Customer ANARDARKO		Job Number 2556718
Date	Time 24-hr clock	Treating Pressure PSI	Flow Rate B/M	Density LB/G	Volume BBL	Solid Fraction NULL	Message	
08/15/2017	12:46:02	482.9	3.8	10.47	54.3	35		
08/15/2017	12:46:32	462.1	3.9	10.51	56.3	35		
08/15/2017	12:47:02	443.2	3.9	10.27	58.3	40		
08/15/2017	12:47:32	438.6	3.9	10.42	60.2	40		
08/15/2017	12:48:02	433.2	3.9	10.38	62.2	40		
08/15/2017	12:48:32	469.2	3.9	10.29	64.0	40		
08/15/2017	12:49:02	456.1	3.9	10.18	66.0	40		
08/15/2017	12:49:32	427.2	4.0	10.23	67.9	47		
08/15/2017	12:50:02	424.9	3.9	10.10	69.9	50		
08/15/2017	12:50:32	445.5	3.9	10.34	71.8	46		
08/15/2017	12:51:02	422.0	3.8	10.47	73.8	42		
08/15/2017	12:51:32	430.3	3.9	10.37	75.7	42		
08/15/2017	12:52:02	462.6	3.9	10.27	77.7	41		
08/15/2017	12:52:32	456.6	4.0	10.18	79.6	41		
08/15/2017	12:53:02	347.6	2.5	10.21	81.0	39		
08/15/2017	12:53:32	327.9	2.4	10.43	82.2	36		
08/15/2017	12:54:02	337.3	2.5	10.41	83.5	45		
08/15/2017	12:54:32	311.0	2.5	9.01	84.7	47		
08/15/2017	12:55:02	425.7	4.0	8.90	86.3	59		
08/15/2017	12:55:32	200.8	0.0	25.00	87.9	70		
08/15/2017	12:56:02	238.0	2.7	14.91	88.2	75		
08/15/2017	12:56:32	331.6	3.3	9.88	89.7	79		
08/15/2017	12:57:02	452.0	4.0	10.81	91.5	81		
08/15/2017	12:57:32	461.8	3.9	11.13	93.5	81		
08/15/2017	12:58:02	428.6	0.0	25.00	94.9	87		
08/15/2017	12:58:32	210.0	0.0	16.44	95.1	92		
08/15/2017	12:58:58	165.9	0.0	11.10	95.4	0		End Spacer
08/15/2017	12:58:59	165.9	0.0	9.14	95.4	0		Drop Bottom Plug
08/15/2017	12:59:02	161.9	0.0	8.31	95.4	0		Reset Total, Vol = 86.42 bbl
08/15/2017	12:59:32	154.8	0.0	10.60	95.4	0		
08/15/2017	13:00:02	151.4	0.0	10.64	95.4	0		
08/15/2017	13:00:32	150.5	0.0	10.42	95.4	0		
08/15/2017	13:01:02	149.3	1.3	5.40	95.7	0		
08/15/2017	13:01:32	148.8	0.0	10.43	95.8	0		
08/15/2017	13:02:02	148.5	0.0	9.73	95.8	0		
08/15/2017	13:02:32	147.9	0.0	9.69	95.8	0		
08/15/2017	13:03:02	147.9	6.5	2.84	96.3	0		
08/15/2017	13:03:32	147.6	0.0	0.85	96.7	0		
08/15/2017	13:04:02	159.4	0.0	25.00	97.1	7		
08/15/2017	13:04:32	447.2	2.3	12.96	97.4	11		
08/15/2017	13:05:02	643.5	4.3	11.96	98.7	16		
08/15/2017	13:05:32	703.5	4.9	12.01	101.1	21		
08/15/2017	13:06:02	703.0	4.9	12.03	103.6	24		
08/15/2017	13:06:32	700.4	4.9	12.04	106.1	28		
08/15/2017	13:07:02	655.8	4.9	12.04	108.5	31		
08/15/2017	13:07:31	626.0	4.9	12.06	110.9	33		Start Cement Slurry
08/15/2017	13:07:32	662.3	4.9	12.06	111.0	33		
08/15/2017	13:07:34	664.1	4.9	12.06	111.2	33		Start Mixing Lead Slurry
08/15/2017	13:08:02	601.7	4.9	12.07	113.5	33		
08/15/2017	13:08:32	617.4	4.9	12.06	115.9	34		
08/15/2017	13:09:02	595.1	4.9	12.08	118.4	36		
08/15/2017	13:09:32	571.1	4.9	12.10	120.9	40		
08/15/2017	13:10:02	554.5	4.9	12.11	123.3	41		
08/15/2017	13:10:32	570.5	4.9	12.11	125.8	42		

Well CANNON 28N-W4HZ DMBW-01317			Field WATTENBERG		Job Start Aug/15/2017	Customer ANARDARKO		Job Number 2556718
Date	Time 24-hr clock	Treating Pressure PSI	Flow Rate B/M	Density LB/G	Volume BBL	Solid Fraction NULL	Message	
08/15/2017	13:11:32	508.1	4.9	12.10	130.7	41		
08/15/2017	13:12:02	491.0	5.0	12.09	133.2	41		
08/15/2017	13:12:32	441.2	4.9	12.09	135.6	41		
08/15/2017	13:13:02	436.6	4.9	12.06	138.1	42		
08/15/2017	13:13:32	407.4	5.0	12.05	140.6	42		
08/15/2017	13:14:02	381.7	4.9	12.07	143.0	42		
08/15/2017	13:14:32	369.6	5.0	12.07	145.5	43		
08/15/2017	13:15:02	365.1	4.9	12.04	148.0	43		
08/15/2017	13:15:32	342.2	5.0	11.97	150.5	43		
08/15/2017	13:16:02	325.6	5.0	11.98	153.0	43		
08/15/2017	13:16:32	312.1	5.0	11.98	155.4	43		
08/15/2017	13:17:02	305.6	5.0	11.98	157.9	43		
08/15/2017	13:17:32	301.6	5.0	11.99	160.4	43		
08/15/2017	13:18:02	266.1	5.0	11.99	162.9	43		
08/15/2017	13:18:32	261.8	5.0	11.99	165.3	43		
08/15/2017	13:19:02	260.9	5.0	11.99	167.8	43		
08/15/2017	13:19:32	274.9	5.0	11.99	170.3	43		
08/15/2017	13:20:02	281.8	5.0	12.00	172.8	44		
08/15/2017	13:20:32	283.8	5.0	12.00	175.3	44		
08/15/2017	13:21:02	284.7	5.0	12.01	177.8	44		
08/15/2017	13:21:32	266.4	5.0	12.01	180.3	44		
08/15/2017	13:22:02	232.6	4.9	12.01	182.7	44		
08/15/2017	13:22:32	248.6	5.0	12.01	185.2	43		
08/15/2017	13:23:02	268.1	5.0	12.00	187.7	43		
08/15/2017	13:23:32	245.5	5.0	12.05	190.2	43		
08/15/2017	13:24:02	248.6	5.0	12.05	192.6	43		
08/15/2017	13:24:32	236.0	5.0	12.01	195.1	42		
08/15/2017	13:25:02	236.9	5.0	11.99	197.6	39		
08/15/2017	13:25:32	240.0	5.0	12.00	200.1	38		
08/15/2017	13:26:02	253.8	5.0	12.03	202.6	39		
08/15/2017	13:26:32	265.8	5.0	12.03	205.1	38		
08/15/2017	13:27:02	228.0	5.0	12.04	207.5	36		
08/15/2017	13:27:32	249.5	5.0	12.03	210.0	33		
08/15/2017	13:28:02	262.1	5.0	12.02	212.5	32		
08/15/2017	13:28:32	257.8	5.0	12.02	215.0	31		
08/15/2017	13:29:02	236.0	5.0	12.04	217.5	30		
08/15/2017	13:29:32	248.9	5.0	12.04	220.0	31		
08/15/2017	13:30:02	272.1	5.0	12.01	222.4	30		
08/15/2017	13:30:32	272.7	5.0	12.03	224.9	28		
08/15/2017	13:31:02	283.0	5.0	12.02	227.4	27		
08/15/2017	13:31:32	293.3	5.0	12.02	229.9	25		
08/15/2017	13:32:02	297.3	4.9	12.03	232.4	23		
08/15/2017	13:32:32	306.1	5.0	12.03	234.8	21		
08/15/2017	13:33:02	230.9	5.0	12.06	237.3	20		
08/15/2017	13:33:32	238.3	5.0	12.05	239.8	18		
08/15/2017	13:34:02	251.8	5.0	12.00	242.3	18		
08/15/2017	13:34:32	244.6	5.0	12.02	244.8	18		
08/15/2017	13:35:02	90.7	2.3	12.01	246.8	18		
08/15/2017	13:35:32	93.8	2.3	12.03	248.0	18		
08/15/2017	13:36:02	97.6	2.4	12.04	249.1	18		
08/15/2017	13:36:32	98.7	2.4	12.03	250.3	18		
08/15/2017	13:37:02	101.3	2.4	12.03	251.5	17		
08/15/2017	13:37:32	103.3	2.4	12.04	252.8	17		
08/15/2017	13:38:02	106.1	2.4	12.04	254.0	17		

Well CANNON 28N-W4HZ DMBW-01317			Field WATTENBERG		Job Start Aug/15/2017	Customer ANARDARKO		Job Number 2556718
Date	Time 24-hr clock	Treating Pressure PSI	Flow Rate B/M	Density LB/G	Volume BBL	Solid Fraction NULL	Message	
08/15/2017	13:39:02	109.0	2.5	12.03	256.4	17		
08/15/2017	13:39:32	201.7	2.5	12.03	257.7	17		
08/15/2017	13:40:02	269.2	5.0	12.00	260.0	16		
08/15/2017	13:40:32	273.5	5.0	12.02	262.5	21		
08/15/2017	13:41:02	259.8	5.4	12.32	264.7	9		
08/15/2017	13:41:32	313.3	5.0	12.09	267.4	40		
08/15/2017	13:42:02	47.2	0.0	23.21	268.5	22		
08/15/2017	13:42:16	33.5	0.0	25.00	268.5	0		Reset Total, Vol = 173.06 bbl
08/15/2017	13:42:18	33.8	0.0	25.00	268.5	0		End Lead Slurry
08/15/2017	13:42:32	36.0	0.0	20.04	268.5	0		
08/15/2017	13:42:45	38.1	0.0	0.28	268.5	0		470 sacks 1.83ft3/sk
08/15/2017	13:43:02	38.3	0.0	0.01	268.5	0		
08/15/2017	13:43:32	38.9	0.0	0.01	268.5	0		
08/15/2017	13:44:02	38.9	0.0	0.01	268.5	0		
08/15/2017	13:44:32	39.2	0.0	0.01	268.5	0		
08/15/2017	13:45:02	39.5	0.0	0.06	268.5	0		
08/15/2017	13:45:32	39.5	0.0	12.28	268.5	0		
08/15/2017	13:46:02	39.5	0.0	12.24	268.5	0		
08/15/2017	13:46:32	39.5	0.0	12.23	268.5	0		
08/15/2017	13:47:02	39.8	0.0	12.21	268.5	0		
08/15/2017	13:47:32	40.1	0.0	12.21	268.5	0		
08/15/2017	13:48:02	40.1	0.0	12.21	268.5	0		
08/15/2017	13:48:32	151.9	2.5	13.56	269.5	0		
08/15/2017	13:49:02	141.1	2.5	13.52	270.8	0		
08/15/2017	13:49:32	140.8	2.5	13.45	272.0	1		
08/15/2017	13:49:48	135.6	2.5	13.49	272.7	1		Start Mixing Tail Slurry
08/15/2017	13:50:02	134.8	2.5	13.49	273.3	1		
08/15/2017	13:50:32	140.5	2.5	13.50	274.5	1		
08/15/2017	13:51:02	135.0	2.5	13.52	275.7	1		
08/15/2017	13:51:32	301.0	5.0	13.51	277.9	1		
08/15/2017	13:52:02	285.2	5.0	13.50	280.4	1		
08/15/2017	13:52:32	292.4	5.0	13.50	282.9	1		
08/15/2017	13:53:02	292.7	5.0	13.49	285.4	1		
08/15/2017	13:53:32	305.8	5.0	13.50	287.9	1		
08/15/2017	13:54:02	307.0	5.0	13.51	290.4	1		
08/15/2017	13:54:32	301.6	5.0	13.51	292.9	1		
08/15/2017	13:55:02	306.4	5.0	13.51	295.4	1		
08/15/2017	13:55:32	299.3	5.0	13.50	297.9	1		
08/15/2017	13:56:02	161.1	4.8	13.51	300.3	1		
08/15/2017	13:56:32	326.7	5.0	13.50	302.8	1		
08/15/2017	13:57:02	120.2	2.0	13.50	304.1	1		
08/15/2017	13:57:32	117.3	2.0	13.50	305.2	1		
08/15/2017	13:58:02	114.7	2.0	13.52	306.2	1		
08/15/2017	13:58:32	115.6	1.8	13.52	307.1	1		
08/15/2017	13:59:02	113.0	1.9	13.48	308.0	1		
08/15/2017	13:59:32	295.3	4.9	13.53	309.3	1		
08/15/2017	13:59:45	294.1	5.0	13.56	310.4	1		760 sacks yield 1.66ft3/sk
08/15/2017	14:00:02	303.8	5.0	13.52	311.8	1		
08/15/2017	14:00:32	228.6	3.9	13.52	314.0	1		
08/15/2017	14:01:02	366.5	5.7	13.48	316.7	1		
08/15/2017	14:01:32	367.9	5.7	13.47	319.6	1		
08/15/2017	14:02:02	377.4	5.7	13.51	322.4	1		
08/15/2017	14:02:32	382.8	5.7	13.55	325.3	1		
08/15/2017	14:03:02	396.5	5.7	13.56	328.1	1		

Well CANNON 28N-W4HZ DMBW-01317			Field WATTENBERG		Job Start Aug/15/2017	Customer ANARDARKO		Job Number 2556718
Date	Time 24-hr clock	Treating Pressure PSI	Flow Rate B/M	Density LB/G	Volume BBL	Solid Fraction NULL	Message	
08/15/2017	14:04:02	397.1	5.7	13.49	333.9	1		
08/15/2017	14:04:32	408.6	5.7	13.51	336.7	1		
08/15/2017	14:05:02	416.0	5.7	13.53	339.6	1		
08/15/2017	14:05:32	413.4	5.7	13.54	342.4	1		
08/15/2017	14:06:02	418.9	5.7	13.55	345.3	1		
08/15/2017	14:06:32	417.7	5.7	13.56	348.2	1		
08/15/2017	14:07:02	414.0	5.7	13.56	351.0	1		
08/15/2017	14:07:32	419.4	5.7	13.57	353.9	1		
08/15/2017	14:08:02	424.6	5.7	13.56	356.7	1		
08/15/2017	14:08:32	439.7	5.7	13.53	359.6	1		
08/15/2017	14:09:02	447.2	5.7	13.52	362.5	1		
08/15/2017	14:09:32	428.3	5.7	13.52	365.3	1		
08/15/2017	14:10:02	427.4	5.7	13.48	368.2	1		
08/15/2017	14:10:32	419.7	5.7	13.46	371.1	1		
08/15/2017	14:11:02	406.8	5.6	13.52	373.9	1		
08/15/2017	14:11:32	412.9	5.7	13.59	376.8	1		
08/15/2017	14:12:02	365.6	5.7	13.53	379.6	1		
08/15/2017	14:12:32	407.4	5.7	13.57	382.5	1		
08/15/2017	14:13:02	410.3	5.7	13.54	385.3	1		
08/15/2017	14:13:32	414.6	5.7	13.49	388.2	1		
08/15/2017	14:14:02	413.7	5.7	13.46	391.0	1		
08/15/2017	14:14:32	415.4	5.7	13.50	393.9	1		
08/15/2017	14:15:02	414.9	5.7	13.57	396.8	1		
08/15/2017	14:15:32	429.2	5.7	13.61	399.5	1		
08/15/2017	14:16:02	424.6	5.7	13.63	402.4	1		
08/15/2017	14:16:32	415.1	5.7	13.57	405.2	1		
08/15/2017	14:17:02	406.3	5.7	13.55	408.1	1		
08/15/2017	14:17:32	386.2	5.7	13.45	410.9	1		
08/15/2017	14:18:02	406.3	5.7	13.46	413.8	1		
08/15/2017	14:18:32	397.4	5.7	13.42	416.7	1		
08/15/2017	14:19:02	436.6	5.7	13.50	419.5	1		
08/15/2017	14:19:32	438.0	5.7	13.52	422.4	1		
08/15/2017	14:20:02	429.7	5.6	13.52	425.2	1		
08/15/2017	14:20:32	420.9	5.7	13.54	427.9	1		
08/15/2017	14:21:02	462.9	5.7	13.53	430.8	1		
08/15/2017	14:21:32	439.5	5.7	13.52	433.7	1		
08/15/2017	14:22:02	426.0	5.7	13.51	436.5	1		
08/15/2017	14:22:32	430.6	5.7	13.50	439.4	1		
08/15/2017	14:23:02	442.3	5.7	13.50	442.2	1		
08/15/2017	14:23:32	434.0	5.7	13.53	445.1	1		
08/15/2017	14:24:02	410.6	5.7	13.55	448.0	1		
08/15/2017	14:24:32	405.4	5.7	13.54	450.8	1		
08/15/2017	14:25:02	397.4	5.7	13.50	453.7	1		
08/15/2017	14:25:32	420.0	5.7	13.50	456.5	1		
08/15/2017	14:26:02	422.3	5.7	13.51	459.4	1		
08/15/2017	14:26:32	417.4	5.7	13.51	462.3	1		
08/15/2017	14:27:02	438.0	5.7	13.52	465.1	1		
08/15/2017	14:27:32	437.2	5.7	13.53	468.0	1		
08/15/2017	14:28:02	464.4	5.7	13.54	470.9	1		
08/15/2017	14:28:32	479.5	5.7	13.54	473.7	1		
08/15/2017	14:29:02	465.2	5.7	13.55	476.6	1		
08/15/2017	14:29:32	489.0	5.7	13.56	479.5	1		
08/15/2017	14:30:02	493.0	5.7	13.56	482.3	1		
08/15/2017	14:30:32	499.5	5.7	13.55	485.2	1		

Well CANNON 28N-W4HZ DMBW-01317			Field WATTENBERG		Job Start Aug/15/2017	Customer ANARDARKO		Job Number 2556718
Date	Time 24-hr clock	Treating Pressure PSI	Flow Rate B/M	Density LB/G	Volume BBL	Solid Fraction NULL	Message	
08/15/2017	14:31:32	464.6	5.7	13.55	490.9	1		
08/15/2017	14:32:02	455.2	5.7	13.56	493.8	1		
08/15/2017	14:32:32	470.6	5.7	13.56	496.6	1		
08/15/2017	14:33:02	472.4	5.7	13.56	499.5	1		
08/15/2017	14:33:32	492.7	5.7	13.56	502.4	1		
08/15/2017	14:34:02	135.6	1.1	12.46	504.8	1		
08/15/2017	14:34:32	134.5	1.6	9.88	505.5	1		
08/15/2017	14:35:02	74.7	0.2	8.78	506.2	1		
08/15/2017	14:35:32	74.7	0.0	9.06	506.2	7		
08/15/2017	14:36:02	44.3	0.0	9.12	506.3	43		
08/15/2017	14:36:05	48.1	0.0	9.04	506.3	46	End Tail Slurry	
08/15/2017	14:36:32	62.9	0.0	8.72	506.3	63		
08/15/2017	14:37:02	61.2	0.0	8.94	506.3	1		
08/15/2017	14:37:32	45.8	0.0	9.25	506.3	1		
08/15/2017	14:38:02	56.1	0.0	9.25	506.3	1		
08/15/2017	14:38:32	50.9	0.0	9.44	506.4	68		
08/15/2017	14:39:02	56.4	0.0	9.93	506.4	77		
08/15/2017	14:39:32	64.4	0.0	9.63	506.4	0		
08/15/2017	14:40:02	63.5	0.0	9.40	506.4	0		
08/15/2017	14:40:32	64.7	0.0	9.44	506.4	1		
08/15/2017	14:41:02	59.5	0.0	9.59	506.4	0		
08/15/2017	14:41:32	62.1	0.0	9.71	506.4	0		
08/15/2017	14:42:02	62.7	0.0	9.57	506.4	0		
08/15/2017	14:42:32	63.8	0.0	9.28	506.4	0		
08/15/2017	14:43:02	57.5	0.0	8.51	506.4	0		
08/15/2017	14:43:32	116.4	4.4	11.56	507.2	1		
08/15/2017	14:43:59	190.5	4.0	12.49	509.0	1	Reset Total, Vol = 240.55 bbl	
08/15/2017	14:44:02	196.3	4.0	12.49	509.2	1		
08/15/2017	14:44:32	171.9	4.0	12.80	511.3	67		
08/15/2017	14:45:02	220.3	4.0	12.75	513.3	78		
08/15/2017	14:45:32	60.1	0.0	25.00	513.7	0		
08/15/2017	14:46:02	66.7	0.0	13.86	513.7	0		
08/15/2017	14:46:32	68.1	0.0	13.55	513.7	0		
08/15/2017	14:47:02	67.5	0.0	11.77	513.7	0		
08/15/2017	14:47:28	67.5	0.0	10.84	513.7	0	End Cement Slurry	
08/15/2017	14:47:32	67.5	0.0	10.77	513.7	0		
08/15/2017	14:47:37	67.2	0.0	10.72	513.7	0	wash lines	
08/15/2017	14:48:02	67.2	0.0	10.59	513.7	0		
08/15/2017	14:48:32	67.2	0.0	9.94	513.7	0		
08/15/2017	14:49:02	68.4	1.8	8.54	514.1	82		
08/15/2017	14:49:32	99.6	2.6	8.98	515.4	82		
08/15/2017	14:50:02	105.9	2.6	8.81	516.7	82		
08/15/2017	14:50:32	98.4	2.6	8.59	517.9	82		
08/15/2017	14:51:02	106.7	2.6	8.48	519.2	82		
08/15/2017	14:51:32	96.4	2.6	8.47	520.5	82		
08/15/2017	14:52:02	29.5	0.0	8.67	521.2	0		
08/15/2017	14:52:32	45.2	0.0	8.70	521.2	0		
08/15/2017	14:53:02	47.2	0.0	8.52	521.2	0		
08/15/2017	14:53:32	47.5	0.0	8.49	521.2	0		
08/15/2017	14:54:02	48.1	0.0	8.48	521.2	0		
08/15/2017	14:54:32	291.5	5.1	9.19	523.0	62		
08/15/2017	14:55:02	256.4	6.4	9.51	524.3	66		
08/15/2017	14:55:32	225.7	0.0	25.00	524.5	48		
08/15/2017	14:56:02	41.8	0.0	25.00	524.6	0		

Well CANNON 28N-W4HZ DMBW-01317			Field WATTENBERG		Job Start Aug/15/2017	Customer ANARDARKO		Job Number 2556718
Date	Time 24-hr clock	Treating Pressure PSI	Flow Rate B/M	Density LB/G	Volume BBL	Solid Fraction NULL	Message	
08/15/2017	14:57:02	205.7	0.0	9.06	524.6	0		
08/15/2017	14:57:32	243.8	0.0	25.00	524.6	25		
08/15/2017	14:58:02	30.0	0.0	8.55	524.6	0		
08/15/2017	14:58:32	41.5	0.0	8.47	524.6	0		
08/15/2017	14:59:02	50.1	0.0	8.47	524.6	0		
08/15/2017	14:59:32	84.4	2.4	8.47	525.4	0		
08/15/2017	15:00:02	86.7	2.5	8.47	526.7	0		
08/15/2017	15:00:08	89.6	2.6	8.47	527.0	0	Reset Total, Vol = 17.97 bbl	
08/15/2017	15:00:15	88.4	2.5	8.47	0.3	0	Reset Total, Vol = 0.29 bbl	
08/15/2017	15:00:25	31.5	2.6	8.56	0.7	0	Drop Top Plug	
08/15/2017	15:00:27	32.3	2.5	8.57	0.8	0	Start Displacement	
08/15/2017	15:00:32	123.9	5.1	8.55	1.1	0		
08/15/2017	15:01:02	137.9	5.0	8.50	3.7	0		
08/15/2017	15:01:32	146.8	5.2	8.49	6.2	0		
08/15/2017	15:02:02	141.3	5.1	8.48	8.8	0		
08/15/2017	15:02:32	149.9	5.3	8.46	11.3	0		
08/15/2017	15:03:02	154.8	5.3	8.47	14.0	0		
08/15/2017	15:03:32	152.8	5.3	8.47	16.6	0		
08/15/2017	15:04:02	146.8	5.3	8.47	19.3	0		
08/15/2017	15:04:32	149.1	5.3	8.47	21.9	0		
08/15/2017	15:05:02	152.8	5.2	8.47	24.5	0		
08/15/2017	15:05:32	147.6	5.2	8.47	27.1	0		
08/15/2017	15:06:02	147.9	5.2	8.47	29.8	0		
08/15/2017	15:06:32	147.1	5.2	8.47	32.4	0		
08/15/2017	15:07:02	153.4	5.2	8.47	34.9	0		
08/15/2017	15:07:32	147.6	5.2	8.47	37.5	0		
08/15/2017	15:08:02	146.2	5.2	8.47	40.1	0		
08/15/2017	15:08:32	154.5	5.2	8.47	42.7	0		
08/15/2017	15:09:02	362.5	5.1	8.47	45.3	0		
08/15/2017	15:09:32	370.8	5.1	8.47	47.9	0		
08/15/2017	15:10:02	377.9	5.1	8.47	50.4	0		
08/15/2017	15:10:32	417.4	5.1	8.47	53.0	0		
08/15/2017	15:11:02	459.8	5.1	8.47	55.6	0		
08/15/2017	15:11:32	480.1	5.1	8.47	58.1	0		
08/15/2017	15:12:02	520.4	5.1	8.47	60.7	0		
08/15/2017	15:12:32	553.3	5.1	8.47	63.3	0		
08/15/2017	15:13:02	584.2	5.1	8.47	65.8	0		
08/15/2017	15:13:32	635.4	5.1	8.47	68.4	0		
08/15/2017	15:14:02	676.6	5.1	8.47	70.9	0		
08/15/2017	15:14:32	695.8	5.1	8.47	73.5	0		
08/15/2017	15:15:02	714.1	5.1	8.47	76.1	0		
08/15/2017	15:15:32	757.0	5.1	8.47	78.6	0		
08/15/2017	15:16:02	804.5	5.2	8.47	81.2	0		
08/15/2017	15:16:32	831.4	5.1	8.47	83.7	0		
08/15/2017	15:17:02	880.3	5.1	8.47	86.3	0		
08/15/2017	15:17:32	911.5	5.1	8.47	88.9	0		
08/15/2017	15:18:02	926.7	5.1	8.47	91.4	0		
08/15/2017	15:18:32	989.6	5.1	8.47	94.0	0		
08/15/2017	15:19:02	1004.8	5.1	8.47	96.5	0		
08/15/2017	15:19:32	1038.6	5.1	8.47	99.1	0		
08/15/2017	15:20:02	1081.8	5.1	8.47	101.7	0		
08/15/2017	15:20:32	1103.2	5.1	8.47	104.2	0		
08/15/2017	15:21:02	1147.0	5.1	8.47	106.8	0		
08/15/2017	15:21:32	1170.2	5.1	8.47	109.3	0		

Well CANNON 28N-W4HZ DMBW-01317			Field WATTENBERG		Job Start Aug/15/2017	Customer ANARDARKO		Job Number 2556718
Date	Time 24-hr clock	Treating Pressure PSI	Flow Rate B/M	Density LB/G	Volume BBL	Solid Fraction NULL	Message	
08/15/2017	15:22:32	1387.6	5.7	8.47	114.4	0		
08/15/2017	15:23:02	1409.4	5.8	8.48	117.2	0		
08/15/2017	15:23:32	1440.0	5.8	8.47	120.1	0		
08/15/2017	15:24:02	1505.5	5.7	8.47	123.0	0		
08/15/2017	15:24:32	1537.5	5.8	8.47	125.8	0		
08/15/2017	15:25:02	1593.9	5.7	8.47	128.7	0		
08/15/2017	15:25:32	1613.6	5.7	8.47	131.6	0		
08/15/2017	15:26:02	1640.3	5.7	8.47	134.5	0		
08/15/2017	15:26:32	1659.1	5.6	8.47	137.3	0		
08/15/2017	15:27:02	1711.8	5.6	8.47	140.1	0		
08/15/2017	15:27:32	1729.2	5.6	8.47	142.8	0		
08/15/2017	15:28:02	1745.8	5.4	8.47	145.6	0		
08/15/2017	15:28:32	1733.5	5.2	8.47	148.3	0		
08/15/2017	15:29:02	1757.3	5.0	8.47	150.8	0		
08/15/2017	15:29:32	1844.2	5.5	8.47	153.5	0		
08/15/2017	15:30:02	1856.6	5.4	8.47	156.2	0		
08/15/2017	15:30:32	1890.9	5.4	8.48	158.9	0		
08/15/2017	15:31:02	1899.5	5.3	8.47	161.6	0		
08/15/2017	15:31:32	1908.9	5.2	8.47	164.2	0		
08/15/2017	15:32:02	1925.8	5.2	8.47	166.7	0		
08/15/2017	15:32:32	1953.5	5.2	8.47	169.4	0		
08/15/2017	15:33:02	1948.7	5.2	8.47	172.0	0		
08/15/2017	15:33:32	2001.3	5.5	8.47	174.7	0		
08/15/2017	15:34:02	2010.2	5.5	8.47	177.4	0		
08/15/2017	15:34:32	2029.6	5.5	8.47	180.2	0		
08/15/2017	15:35:02	2018.8	5.4	8.47	182.9	0		
08/15/2017	15:35:32	2026.5	5.5	8.47	185.7	0		
08/15/2017	15:36:02	2019.9	5.5	8.47	188.4	0		
08/15/2017	15:36:32	2039.1	5.4	8.47	191.1	0		
08/15/2017	15:37:02	2044.5	5.5	8.47	193.9	0		
08/15/2017	15:37:32	2046.2	5.4	8.47	196.6	0		
08/15/2017	15:38:02	2050.2	5.4	8.48	199.3	0		
08/15/2017	15:38:32	2033.4	5.2	8.48	201.9	0		
08/15/2017	15:39:02	2053.4	5.4	8.47	204.6	0		
08/15/2017	15:39:32	2062.0	5.3	8.47	207.2	0		
08/15/2017	15:40:02	2072.6	5.3	8.47	209.9	0		
08/15/2017	15:40:32	2069.1	5.3	8.47	212.6	0		
08/15/2017	15:41:02	2077.7	5.3	8.47	215.2	0		
08/15/2017	15:41:32	2076.9	5.2	8.48	217.8	0		
08/15/2017	15:42:02	2070.6	5.3	8.48	220.4	0		
08/15/2017	15:42:32	2082.3	5.3	8.47	223.1	0		
08/15/2017	15:43:02	2094.3	5.3	8.47	225.7	0		
08/15/2017	15:43:32	2081.4	5.3	8.47	228.4	0		
08/15/2017	15:44:02	2087.1	5.3	8.47	231.0	0		
08/15/2017	15:44:32	2106.9	5.2	8.47	233.7	0		
08/15/2017	15:45:02	2078.0	5.1	8.47	236.3	0		
08/15/2017	15:45:32	2110.0	5.3	8.47	238.9	0		
08/15/2017	15:46:02	2113.8	5.3	8.47	241.5	0		
08/15/2017	15:46:32	2094.9	5.3	8.47	244.2	0		
08/15/2017	15:47:02	1714.3	2.5	8.47	246.3	0		
08/15/2017	15:47:32	1708.6	2.5	8.47	247.6	0		
08/15/2017	15:48:02	1967.8	3.9	8.44	248.9	0		
08/15/2017	15:48:32	2081.1	5.0	8.47	251.4	0		
08/15/2017	15:49:02	2068.3	5.0	8.47	253.9	0		

Well CANNON 28N-W4HZ DMBW-01317			Field WATTENBERG		Job Start Aug/15/2017	Customer ANARDARKO		Job Number 2556718
Date	Time 24-hr clock	Treating Pressure PSI	Flow Rate B/M	Density LB/G	Volume BBL	Solid Fraction NULL	Message	
08/15/2017	15:50:02	2064.3	5.0	8.47	258.9	0		
08/15/2017	15:50:32	2075.4	5.0	8.47	261.3	0		
08/15/2017	15:51:02	2094.6	5.0	8.47	263.8	0		
08/15/2017	15:51:32	2088.0	5.0	8.47	266.3	0		
08/15/2017	15:52:02	2062.3	5.0	8.47	268.8	0		
08/15/2017	15:52:32	2113.2	5.0	8.47	271.3	0		
08/15/2017	15:53:02	2077.7	5.0	8.47	273.8	0		
08/15/2017	15:53:32	2074.8	5.0	8.47	276.3	0		
08/15/2017	15:54:02	2094.0	5.0	8.47	278.8	0		
08/15/2017	15:54:32	2088.3	5.0	8.47	281.3	0		
08/15/2017	15:55:02	2065.1	5.0	8.47	283.8	0		
08/15/2017	15:55:32	1725.8	2.5	8.47	285.2	0		
08/15/2017	15:56:02	1726.1	2.5	8.47	286.5	0		
08/15/2017	15:56:32	1728.9	2.5	8.47	287.8	0		
08/15/2017	15:57:02	1732.1	2.5	8.47	289.0	0		
08/15/2017	15:57:32	2422.2	0.0	8.47	289.8	0		
08/15/2017	15:57:35	2306.6	0.0	8.47	289.8	0		Bump Top Plug
08/15/2017	15:57:37	2413.9	0.0	8.47	289.8	0		End Displacement
08/15/2017	15:58:02	2348.1	0.0	8.47	289.8	0		
08/15/2017	15:58:32	2366.4	0.0	8.47	289.8	0		
08/15/2017	15:59:02	2408.4	0.0	8.47	289.8	0		
08/15/2017	15:59:32	2395.6	0.0	8.47	289.8	0		
08/15/2017	16:00:02	2425.6	0.0	8.47	289.8	0		
08/15/2017	16:00:32	2441.4	0.0	8.47	289.8	0		
08/15/2017	16:01:02	2453.6	0.0	8.47	289.8	0		
08/15/2017	16:01:32	2472.0	0.0	8.47	289.8	0		
08/15/2017	16:02:02	1566.7	0.0	8.47	289.8	0		
08/15/2017	16:02:32	235.5	0.0	8.47	289.8	0		
08/15/2017	16:03:02	34.0	0.0	8.47	289.8	0		
08/15/2017	16:03:32	34.0	0.0	8.47	289.8	0		
08/15/2017	16:04:02	433.5	1.3	8.47	290.1	0		
08/15/2017	16:04:27	1309.8	2.2	8.47	290.8	0		floats hold
08/15/2017	16:04:32	1486.9	2.5	8.47	291.0	0		
08/15/2017	16:05:00	2676.5	2.5	8.47	292.2	0		Pressure Test Lines
08/15/2017	16:05:02	2778.1	2.5	8.47	292.3	0		
08/15/2017	16:05:32	2833.6	0.0	8.47	292.4	0		
08/15/2017	16:06:02	2924.3	0.0	8.47	292.6	0		
08/15/2017	16:06:32	3012.1	0.0	8.47	292.6	0		
08/15/2017	16:07:02	3000.7	0.0	8.47	292.6	0		
08/15/2017	16:07:32	2998.7	0.0	8.47	292.6	0		
08/15/2017	16:08:02	3025.0	0.0	8.47	292.6	0		
08/15/2017	16:08:32	3027.9	0.0	8.47	292.6	0		
08/15/2017	16:09:02	3033.3	0.0	8.47	292.6	0		
08/15/2017	16:09:32	3045.9	0.0	8.47	292.6	0		
08/15/2017	16:10:02	3055.9	0.0	8.47	292.6	0		
08/15/2017	16:10:32	3063.9	0.0	8.47	292.6	0		
08/15/2017	16:11:02	3073.4	0.0	8.47	292.6	0		
08/15/2017	16:11:32	3082.5	0.0	8.47	292.6	0		
08/15/2017	16:12:02	3090.8	0.0	8.47	292.6	0		
08/15/2017	16:12:32	3100.8	0.0	8.47	292.6	0		
08/15/2017	16:13:02	3110.8	0.0	8.47	292.6	0		
08/15/2017	16:13:32	3120.9	0.0	8.47	292.6	0		
08/15/2017	16:14:02	3131.1	0.0	8.47	292.6	0		
08/15/2017	16:14:32	3140.6	0.0	8.47	292.6	0		

Well CANNON 28N-W4HZ DMBW-01317			Field WATTENBERG		Job Start Aug/15/2017	Customer ANARDARKO		Job Number 2556718
Date	Time 24-hr clock	Treating Pressure PSI	Flow Rate B/M	Density LB/G	Volume BBL	Solid Fraction NULL	Message	
08/15/2017	16:15:32	3159.5	0.0	8.47	292.6	0		
08/15/2017	16:16:02	3168.3	0.0	8.47	292.6	0		
08/15/2017	16:16:32	3176.9	0.0	8.47	292.6	0		
08/15/2017	16:17:02	3186.1	0.0	8.47	292.6	0		
08/15/2017	16:17:32	3194.1	0.0	8.47	292.6	0		
08/15/2017	16:18:02	3202.7	0.0	8.47	292.6	0		
08/15/2017	16:18:32	3211.6	0.0	8.47	292.6	0		
08/15/2017	16:19:02	3219.0	0.0	8.47	292.6	0		
08/15/2017	16:19:32	3227.6	0.0	8.47	292.6	0		
08/15/2017	16:20:02	3235.3	0.0	8.47	292.6	0		
08/15/2017	16:20:32	3242.2	0.0	8.47	292.6	0		
08/15/2017	16:21:02	3250.7	0.0	8.47	292.6	0		
08/15/2017	16:21:32	3258.8	0.0	8.47	292.6	0		
08/15/2017	16:22:02	3266.2	0.0	8.47	292.6	0		
08/15/2017	16:22:32	3273.4	0.0	8.47	292.6	0		
08/15/2017	16:23:02	3281.1	0.0	8.47	292.6	0		
08/15/2017	16:23:32	3288.2	0.0	8.47	292.6	0		
08/15/2017	16:24:02	3294.5	0.0	8.47	292.6	0		
08/15/2017	16:24:32	2583.3	0.0	8.47	292.6	0		
08/15/2017	16:25:02	1841.1	0.0	8.47	292.6	0		
08/15/2017	16:25:32	1161.3	0.0	8.47	292.6	0		
08/15/2017	16:26:02	29.5	0.0	8.47	292.6	0		
08/15/2017	16:26:32	30.0	0.0	8.47	292.6	0		
08/15/2017	16:27:02	36.0	0.0	8.47	292.6	0		
08/15/2017	16:27:32	32.9	0.0	8.47	292.6	0		
08/15/2017	16:28:02	35.8	0.0	8.47	292.6	0		
08/15/2017	16:28:32	35.8	0.0	8.47	292.6	0		
08/15/2017	16:29:02	32.6	0.0	8.47	292.6	0		
08/15/2017	16:29:32	32.3	0.0	8.47	292.6	0		
08/15/2017	16:30:02	29.2	0.0	8.47	292.6	0		
08/15/2017	16:30:32	23.2	0.0	8.47	292.6	0		
08/15/2017	16:31:02	30.6	0.0	8.47	292.6	0		
08/15/2017	16:31:32	32.9	0.0	8.47	292.6	0		
08/15/2017	16:32:02	33.2	0.0	8.47	292.6	0		
08/15/2017	16:32:32	32.9	0.0	8.47	292.6	0		
08/15/2017	16:33:02	32.6	0.0	8.47	292.6	0		
08/15/2017	16:33:32	32.0	0.0	8.47	292.6	0		
08/15/2017	16:34:02	32.9	0.0	8.47	292.6	0		
08/15/2017	16:34:32	32.0	0.0	8.47	292.6	0		
08/15/2017	16:35:02	32.9	0.0	8.47	292.6	0		
08/15/2017	16:35:32	32.9	0.0	8.47	292.6	0		
08/15/2017	16:36:02	32.9	0.0	8.47	292.6	0		
08/15/2017	16:36:32	32.9	0.0	8.47	292.6	0		
08/15/2017	16:37:02	33.2	0.0	8.47	292.6	0		
08/15/2017	16:37:32	33.2	0.0	8.47	292.6	0		
08/15/2017	16:38:02	32.9	0.0	8.47	292.6	0		
08/15/2017	16:38:32	32.9	0.0	8.47	292.6	0		
08/15/2017	16:39:02	33.2	0.0	8.47	292.6	0		
08/15/2017	16:39:32	33.2	0.0	8.47	292.6	0		
08/15/2017	16:40:02	33.5	0.0	8.47	292.6	0		
08/15/2017	16:40:32	33.5	0.0	8.47	292.6	0		
08/15/2017	16:41:02	33.5	0.0	8.47	292.6	0		
08/15/2017	16:41:32	33.5	0.0	8.47	292.6	0		
08/15/2017	16:42:02	34.9	0.0	8.47	292.6	0		

Well CANNON 28N-W4HZ DMBW-01317			Field WATTENBERG		Job Start Aug/15/2017	Customer ANARDARKO		Job Number 2556718	
Date	Time 24-hr clock	Treating Pressure PSI	Flow Rate B/M	Density LB/G	Volume BBL	Solid Fraction NULL	Message		
08/15/2017	16:42:45	33.5	0.0	8.47	292.6	0	top of lead 1500'		

Post Job Summary

Average Pump Rates, bbl/min					Volume of Fluid Injected, bbl			
Slurry 4.6	N2	Mud	Maximum Rate 22.3		Total Slurry 379.6	Mud 0.0	Spacer 80.0	N2
Treating Pressure Summary, psi					Breakdown Fluid			
Maximum 4893.9	Final 33.2	Average 780.8	Bump Plug to 1600.0	Breakdown	Type	Volume bbl		Density lb/gal
Avg. N2 Percent %	Designed Slurry Volume 379.0 bbl		Displacement 289.1 bbl	Mix Water Temp 65.00 degF	Cement Circulated to Surface? <input type="checkbox"/>		Volume bbl	
					Washed Thru Perfs <input type="checkbox"/>		To m	
Customer or Authorized Representative			Schlumberger Supervisor NORM HASLAUER			Circulation Lost <input type="checkbox"/>		Job Completed <input checked="" type="checkbox"/>
					-		-	