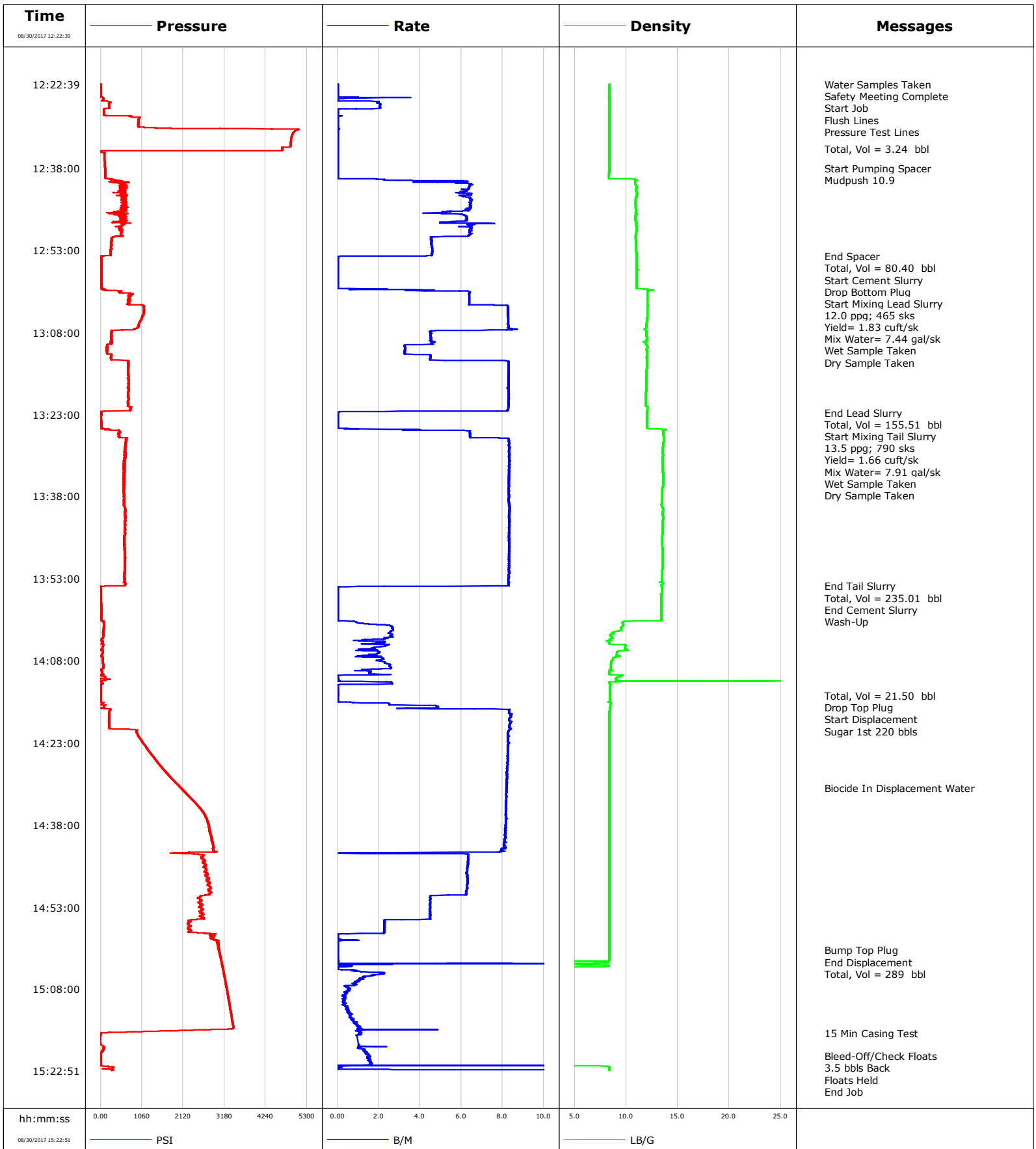


Well	Cannon 4N-4HZ	Client	Anadarko
Field	Wattenberg	SIR No.	DWG2-00005
Engineer	Michael Lopez	Job Type	5.5" Production
Country	United States	Job Date	08-30-2017



				Customer			Job Number		
				Anadarko			DWG2-00005		
Well		Location (legal)			Schlumberger Location			Job Start	
Cannon 4N-4HZ 0631719976								Aug/30/2017	
Field		Formation Name/Type		Deviation	Bit Size		Well MD	Well TVD	
Wattenberg				deg	7.9 in		13103.4 ft	7087.1 ft	
County		State/Province		BHP	BHST	BHCT	Pore Press. Gradient		
Weld		Colorado		psi	222 degF	217 degF	lb/gal		
Well Master		API/UWI							
0631719976		5123447930000							
Rig Name	Drilled For		Service Via	Casing/Liner					
Precision 564	Oil & Gas		Land	Depth, ft	Size, in	Weight, lb/ft	Grade	Thread	
Offshore Zone	Well Class		Well Type	1901.0	9.6	36.0	J55	8RD	
	New		Exploration	13103.4	5.5	20.0	P110	8RD	
Drilling Fluid Type		Max. Density	Plastic Viscosity	Tubing/Drill Pipe					
OBM		9.50 lb/gal	cP	T/D	Depth, ft	Size, in	Weight, lb/ft	Grade	Thread
Service Line	Job Type			Perforations/Open Hole					
Cementing	5.5" Production			Top, ft	Bottom, ft	shot/ft	No. of Shots	Total Interval	
				ft	ft			ft	
				ft	ft			Diameter	
				ft	ft			in	
Max. Allowed Tub. Press		Max. Allowed Ann. Press	WH Connection	Treat Down	Displacement	Packer Type	Packer Depth		
psi		psi	5.5" LTC	Casing	289.0 bbl		ft		
Service Instructions		Tubing Vol.	Casing Vol.	Annular Vol.	Openhole Vol.				
9 5/8" 36# Previous Casing: 1,892' 7 7/8" to TD // OH Excess: 4% Top of Lead Cement: 1,500' Top of Tail Cement: 6,000' TD: 13,151' (7,073')		bbl	291.0 bbl	437.0 bbl	346.0 bbl				
Casing/Tubing Secured		1 Hole Vol. Circulated prior to Cement	Casing Tools	Squeeze Job					
<input checked="" type="checkbox"/>		<input checked="" type="checkbox"/>							
Lift Pressure		Shoe Type	Shoe Depth		Squeeze Type				
psi		Float	13103.0 ft						
Pipe Rotated		Pipe Reciprocated	Stage Tool Type	Tool Depth					
<input checked="" type="checkbox"/>		<input type="checkbox"/>		ft					
No. Centralizers		Top Plugs	Bottom Plugs	Stage Tool Depth	Tail Pipe Size				
		1	1	ft	in				
Cement Head Type		Job Scheduled For	Arrived on Location	Leave Location	Collar Type	Tail Pipe Depth			
Double		Aug/30/2017 08:30	Aug/30/2017 08:30	Aug/30/2017 16:30	Float	ft			
		Collar Depth	Sqz. Total Vol.						
		13012.2 ft	bbl						
Date	Time 24-hr clock	Treating Pressure PSI	Flow Rate B/M	Density LB/G	Volume BBL	Message			
08/30/2017	12:22:39	10	0.0	8.35	0.0	Started Acquisition			
08/30/2017	12:22:40	10	0.0	8.35	0.0	Safety Meeting Complete			
08/30/2017	12:22:42	10	0.0	8.35	0.0	Start Job			
08/30/2017	12:22:49	10	0.0	8.35	0.0	Flush Lines			
08/30/2017	12:24:19	8	0.0	8.35	0.0				
08/30/2017	12:25:59	255	1.9	8.37	0.8				
08/30/2017	12:27:39	84	0.0	8.36	3.2				
08/30/2017	12:28:18	86	0.0	8.36	3.2	Pressure Test Lines			
08/30/2017	12:29:19	969	0.0	8.36	3.2				
08/30/2017	12:30:59	5070	0.0	8.35	3.2				
08/30/2017	12:32:39	4894	0.0	8.35	3.2				
08/30/2017	12:34:19	4664	0.0	8.35	3.2				
08/30/2017	12:34:29	4666	0.0	8.35	3.2	Total, Vol = 3.24 bbl			
08/30/2017	12:35:59	94	0.0	8.35	0.0				
08/30/2017	12:37:39	112	0.0	8.35	0.0				
08/30/2017	12:38:01	114	0.0	8.35	0.0	Start Pumping Spacer			
08/30/2017	12:38:02	114	0.0	8.35	0.0	Mudpush 10.9			
08/30/2017	12:39:19	122	0.0	8.35	0.0				
08/30/2017	12:40:59	634	6.5	10.90	4.7				
08/30/2017	12:42:39	653	6.5	11.08	15.2				
08/30/2017	12:44:19	608	6.4	10.89	25.8				

Well		Field		Job Start		Customer		Job Number	
Cannon 4N-4HZ 0631719976		Wattenberg		Aug/30/2017		Anadarko		DWG2-00005	
Date	Time 24-hr clock	Treating Pressure PSI	Flow Rate B/M	Density LB/G	Volume BBL	Message			
08/30/2017	12:47:39	580	6.1	10.92	46.2				
08/30/2017	12:49:19	530	6.4	11.03	56.5				
08/30/2017	12:50:59	276	4.5	10.94	66.3				
08/30/2017	12:52:39	261	4.6	10.95	73.9				
08/30/2017	12:54:05	22	1.0	11.00	80.4	End Spacer			
08/30/2017	12:54:12	14	0.0	11.00	80.4	Total, Vol = 80.40 bbl			
08/30/2017	12:54:19	15	0.0	11.00	80.4	Start Cement Slurry			
08/30/2017	12:55:59	14	0.0	11.00	80.4				
08/30/2017	12:57:39	14	0.0	11.01	0.0				
08/30/2017	12:59:19	14	0.0	11.00	0.0				
08/30/2017	13:00:03	82	0.6	11.27	0.0	Drop Bottom Plug			
08/30/2017	13:00:09	26	0.6	12.16	0.2	Start Mixing Lead Slurry			
08/30/2017	13:00:59	756	6.4	12.06	4.6				
08/30/2017	13:02:39	734	6.4	12.07	15.3				
08/30/2017	13:02:46	736	6.4	12.07	16.0	12.0 ppg; 465 sks			
08/30/2017	13:02:47	728	6.4	12.07	16.1	Yield= 1.83 cuft/sk			
08/30/2017	13:03:56	1118	8.2	12.08	25.2	Mix Water= 7.44 gal/sk			
08/30/2017	13:04:19	1103	8.3	12.07	28.3				
08/30/2017	13:05:05	1081	8.3	12.04	34.7	Wet Sample Taken			
08/30/2017	13:05:07	1066	8.3	12.04	34.9	Dry Sample Taken			
08/30/2017	13:05:59	1021	8.3	12.01	42.1				
08/30/2017	13:07:39	274	6.3	11.88	55.9				
08/30/2017	13:09:19	273	4.5	12.00	63.4				
08/30/2017	13:12:39	266	4.5	11.99	76.3				
08/30/2017	13:14:19	718	8.3	11.99	88.2				
08/30/2017	13:15:59	721	8.3	11.97	102.0				
08/30/2017	13:17:39	721	8.3	11.97	115.9				
08/30/2017	13:19:19	710	8.3	11.92	129.7				
08/30/2017	13:20:59	706	8.3	11.91	143.5				
08/30/2017	13:22:38	17	0.0	12.01	155.5	End Lead Slurry			
08/30/2017	13:22:39	17	0.0	12.01	155.5				
08/30/2017	13:22:49	14	0.0	12.01	155.5	Total, Vol = 155.51 bbl			
08/30/2017	13:24:19	13	0.0	12.02	155.5				
08/30/2017	13:25:47	196	4.0	13.90	155.9	Start Mixing Tail Slurry			
08/30/2017	13:25:49	151	3.9	13.89	156.1	13.5 ppg; 790 sks			
08/30/2017	13:25:59	468	6.4	13.57	156.9				
08/30/2017	13:26:02	468	6.4	13.56	157.2	Yield= 1.66 cuft/sk			
08/30/2017	13:26:03	471	6.4	13.57	157.3	Mix Water= 7.91 gal/sk			
08/30/2017	13:26:04	481	6.4	13.57	157.4	Wet Sample Taken			
08/30/2017	13:26:10	496	6.4	13.57	158.0	Dry Sample Taken			
08/30/2017	13:27:39	667	8.3	13.64	168.2				
08/30/2017	13:29:19	635	8.3	13.54	182.1				
08/30/2017	13:30:59	633	8.3	13.56	195.9				
08/30/2017	13:32:39	626	8.3	13.53	209.8				
08/30/2017	13:34:19	586	8.3	13.58	223.6				
08/30/2017	13:35:59	590	8.3	13.57	237.5				
08/30/2017	13:37:39	598	8.3	13.48	251.3				
08/30/2017	13:39:19	602	8.3	13.43	265.1				
08/30/2017	13:40:59	625	8.3	13.54	279.0				
08/30/2017	13:42:39	624	8.3	13.55	292.9				
08/30/2017	13:44:19	626	8.3	13.55	306.7				
08/30/2017	13:45:59	610	8.3	13.49	320.6				
08/30/2017	13:47:39	616	8.3	13.54	334.4				
08/30/2017	13:49:19	627	8.3	13.56	348.3				

Well		Field		Job Start		Customer		Job Number	
Cannon 4N-4HZ 0631719976		Wattenberg		Aug/30/2017		Anadarko		DWG2-00005	
Date	Time 24-hr clock	Treating Pressure PSI	Flow Rate B/M	Density LB/G	Volume BBL	Message			
08/30/2017	13:52:39	607	8.3	13.46	376.0				
08/30/2017	13:54:19	610	8.3	13.39	389.8				
08/30/2017	13:54:22	119	7.8	13.43	390.2	End Tail Slurry			
08/30/2017	13:54:30	6	0.1	13.49	390.5	Total, Vol = 235.01 bbl			
08/30/2017	13:54:31	6	0.0	13.49	390.5	End Cement Slurry			
08/30/2017	13:55:20	7	0.0	13.50	390.5	Wash-Up			
08/30/2017	13:55:59	8	0.0	13.40	390.5				
08/30/2017	13:57:39	13	0.0	13.41	390.5				
08/30/2017	13:59:19	14	0.0	13.40	390.5				
08/30/2017	14:00:59	77	0.9	9.66	390.7				
08/30/2017	14:02:39	70	2.6	9.04	394.5				
08/30/2017	14:04:19	27	0.8	8.54	398.4				
08/30/2017	14:05:59	56	1.9	9.90	401.7				
08/30/2017	14:07:39	56	2.2	8.70	404.6				
08/30/2017	14:09:19	66	2.6	8.53	408.5				
08/30/2017	14:10:59	110	0.0	9.23	410.7				
08/30/2017	14:12:39	3	0.0	8.44	412.0				
08/30/2017	14:14:19	6	0.0	8.44	412.0				
08/30/2017	14:14:22	6	0.0	8.44	412.0	Total, Vol = 21.50 bbl			
08/30/2017	14:15:24	7	0.0	8.43	0.0	Drop Top Plug			
08/30/2017	14:15:25	7	0.0	8.43	0.0	Start Displacement			
08/30/2017	14:15:26	7	0.0	8.44	0.0	Sugar 1st 220 bbls			
08/30/2017	14:15:59	44	2.5	8.47	0.8				
08/30/2017	14:17:39	225	8.4	8.39	11.3				
08/30/2017	14:19:19	221	8.4	8.38	25.2				
08/30/2017	14:20:59	922	8.3	8.37	39.1				
08/30/2017	14:22:39	1053	8.2	8.37	52.9				
08/30/2017	14:24:19	1224	8.2	8.37	66.6				
08/30/2017	14:25:59	1409	8.2	8.36	80.3				
08/30/2017	14:27:39	1592	8.2	8.37	94.1				
08/30/2017	14:29:19	1798	8.2	8.37	107.7				
08/30/2017	14:30:59	2025	8.2	8.37	121.4				
08/30/2017	14:31:17	2064	8.2	8.37	123.9	Biocide In Displacement Water			
08/30/2017	14:32:39	2247	8.2	8.37	135.1				
08/30/2017	14:34:19	2476	8.2	8.36	148.7				
08/30/2017	14:35:59	2668	8.1	8.36	162.3				
08/30/2017	14:37:39	2751	8.2	8.36	175.8				
08/30/2017	14:39:19	2814	8.1	8.37	189.4				
08/30/2017	14:40:59	2870	8.1	8.36	202.9				
08/30/2017	14:42:39	2889	7.9	8.36	216.3				
08/30/2017	14:44:19	2663	6.3	8.36	226.2				
08/30/2017	14:45:59	2707	6.3	8.36	236.7				
08/30/2017	14:47:39	2779	6.3	8.36	247.2				
08/30/2017	14:49:19	2834	6.3	8.36	257.7				
08/30/2017	14:50:59	2568	4.5	8.36	267.8				
08/30/2017	14:52:39	2552	4.5	8.36	275.3				
08/30/2017	14:54:19	2640	4.5	8.36	282.7				
08/30/2017	14:55:59	2237	2.3	8.36	288.6				
08/30/2017	14:57:39	2460	2.2	8.36	292.4				
08/30/2017	14:59:19	3016	0.0	8.36	293.0				
08/30/2017	15:00:53	3038	0.0	8.36	293.0	Bump Top Plug			
08/30/2017	15:00:54	3038	0.0	8.36	293.0	End Displacement			
08/30/2017	15:00:58	3034	0.0	8.36	293.0	Total, Vol = 289 bbl			
08/30/2017	15:00:59	3034	0.0	8.36	293.0				

Well		Field		Job Start		Customer		Job Number	
Cannon 4N-4HZ 0631719976		Wattenberg		Aug/30/2017		Anadarko		DWG2-00005	
Date	Time 24-hr clock	Treating Pressure PSI	Flow Rate B/M	Density LB/G	Volume BBL	Message			
08/30/2017	15:04:19	3144	0.0	0.08	295.1				
08/30/2017	15:05:59	3187	1.2	0.05	297.4				
08/30/2017	15:07:39	3231	0.5	0.05	298.8				
08/30/2017	15:09:19	3273	0.3	0.04	299.6				
08/30/2017	15:10:59	3314	0.4	0.04	300.1				
08/30/2017	15:12:39	3354	0.6	0.04	300.9				
08/30/2017	15:14:19	3392	0.9	0.04	302.1				
08/30/2017	15:15:59	26	1.1	0.04	304.0				
08/30/2017	15:16:00	13	1.1	0.04	304.1	15 Min Casing Test			
08/30/2017	15:19:19	58	1.3	0.04	305.7				
08/30/2017	15:20:14	6	1.6	0.04	307.1	Bleed-Off/Check Floats			
08/30/2017	15:20:15	6	1.6	0.04	307.1	3.5 bbls Back			
08/30/2017	15:20:58	6	1.5	0.04	308.2	Floats Held			
08/30/2017	15:20:59	6	1.5	0.04	308.2				
08/30/2017	15:22:14	320	0.2	8.38	311.2	End Job			

Post Job Summary

Average Pump Rates, bbl/min				Volume of Fluid Injected, bbl			
Slurry	N2	Mud	Maximum Rate	Total Slurry	Mud	Spacer	N2
5.4			25.0	385.0	0.0	80.0	
Treating Pressure Summary, psi				Breakdown Fluid			
Maximum	Final	Average	Bump Plug to	Breakdown	Type	Volume	Density
3000	137	1154	3000			bbl	lb/gal
Avg. N2 Percent	Designed Slurry Volume		Displacement	Mix Water Temp	Cement Circulated to Surface?	Volume	
%	385.0 bbl		289.0 bbl	70 degF	<input type="checkbox"/>	bbl	
Customer or Authorized Representative				Schlumberger Supervisor	Washed Thru Perfs	To	
Jeremy Duty				Michael Lopez	<input type="checkbox"/>	ft	
					Circulation Lost	Job Completed	
					<input type="checkbox"/>	<input checked="" type="checkbox"/>	
					-	-	