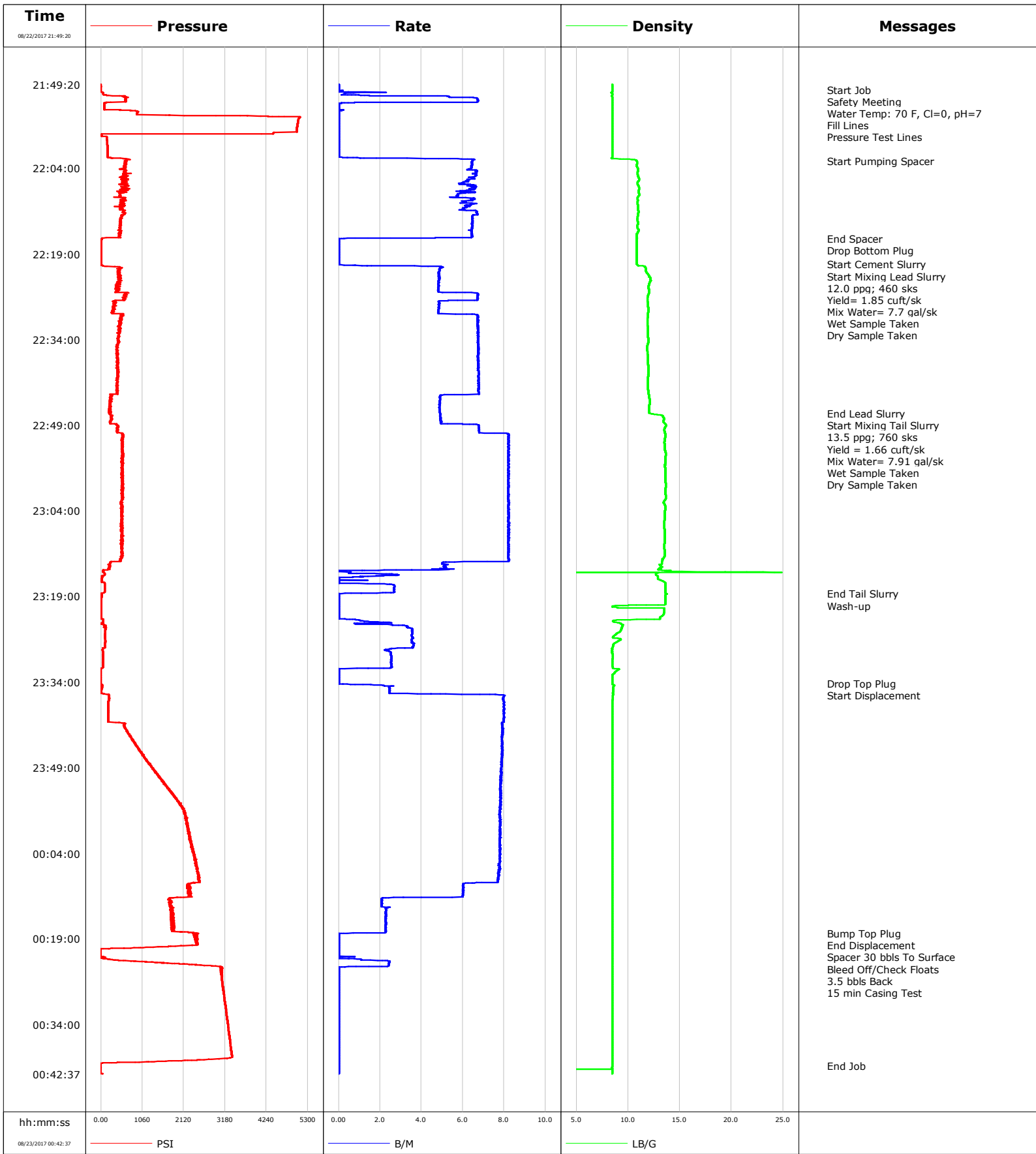


Well	Cannon 29N-4HZ	Client	Anadarko
Field	Wattenburg	SIR No.	D8WD-00505
Engineer	Michael Lopez	Job Type	5.5" Production
Country	United States	Job Date	08-22-2017



				Customer			Job Number		
				Anadarko			D8WD-00505		
Well		Location (legal)		Schlumberger Location		Job Start			
Cannon 29N-4HZ 0631719258				Cheyenne, WY		Aug/22/2017			
Field		Formation Name/Type		Deviation	Bit Size	Well MD	Well TVD		
Wattenburg				deg	7.9 in	12914.0 ft	6992.1 ft		
County		State/Province		BHP	BHST	BHCT	Pore Press. Gradient		
Weld		Colorado		psi	222 degF	217 degF	lb/gal		
Well Master		API/UWI							
0631719258		05123447960000							
Rig Name	Drilled For	Service Via	Casing/Liner						
Precision 564	Oil & Gas	Land	Depth, ft	Size, in	Weight, lb/ft	Grade	Thread		
Offshore Zone	Well Class	Well Type	1880.0	9.6	36.0	J55	8RD		
	New	Exploration	12902.0	5.5	20.0	P110	8RD		
Drilling Fluid Type		Max. Density	Plastic Viscosity	Tubing/Drill Pipe					
OBM		9.50 lb/gal	cP	T/D	Depth, ft	Size, in	Weight, lb/ft	Grade	Thread
Service Line	Job Type								
Cementing	5.5" Production								
Max. Allowed Tub. Press	Max. Allowed Ann. Press	WH Connection	Perforations/Open Hole						
psi	psi	5.5 DBL Head	Top, ft	Bottom, ft	shot/ft	No. of Shots	Total Interval		
			ft	ft			ft		
			ft	ft			Diameter		
			ft	ft			in		
Service Instructions		Treat Down	Displacement	Packer Type	Packer Depth				
9 5/8" 36# Previous Casing: 1,880' 7 7/8" to TD // OH Excess: 4% Top of Lead Cement: 1,000' Top of Tail Cement: 5,900' TD: 12,914 (6,992')		Casing	284.4 bbl		ft				
		Tubing Vol.	Casing Vol.	Annular Vol.	Openhole Vol.				
		bbl	bbl	430.7 bbl	bbl				
Casing/Tubing Secured		1 Hole Vol. Circulated prior to Cement	Casing Tools		Squeeze Job				
<input checked="" type="checkbox"/>		<input checked="" type="checkbox"/>							
Lift Pressure		Shoe Type	Shoe Depth	Stage Tool Type	Squeeze Type				
10860 psi		Float	12901.6 ft						
Pipe Rotated		Pipe Reciprocated	Stage Tool Depth	Tool Type	Tool Depth				
<input type="checkbox"/>		<input type="checkbox"/>	ft		ft				
No. Centralizers		Top Plugs	Bottom Plugs	Stage Tool Depth	Tail Pipe Size	Tail Pipe Depth			
		1	1	ft	in	ft			
Cement Head Type		Job Scheduled For	Arrived on Location	Leave Location	Collar Type	Tail Pipe Depth			
Double		Aug/22/2017 18:00	Aug/22/2017 18:00	Aug/22/2017 02:00	Float	ft			
		Collar Depth	Sqz. Total Vol.						
		12812.0 ft	bbl						
Date	Time 24-hr clock	Treating Pressure PSI	Flow Rate B/M	Density LB/G	Volume BBL	Message			
08/22/2017	21:49:20	-6	0.0	8.47	0.0	Started Acquisition			
08/22/2017	21:50:14	-3	0.0	8.47	0.0	Start Job			
08/22/2017	21:50:23	-1	0.0	8.47	0.0	Safety Meeting			
08/22/2017	21:50:41	-0	0.5	8.47	0.0	Water Temp: 70 F, Cl=0, pH=7			
08/22/2017	21:50:47	48	1.0	8.35	0.2	Fill Lines			
08/22/2017	21:51:00	56	0.3	8.47	0.3				
08/22/2017	21:52:40	98	0.1	8.48	7.7				
08/22/2017	21:54:20	927	0.0	8.47	7.7				
08/22/2017	21:54:46	1739	0.0	8.47	7.7	Pressure Test Lines			
08/22/2017	21:56:00	5039	0.0	8.47	7.7				
08/22/2017	21:57:40	5010	0.0	8.47	7.7				
08/22/2017	21:59:20	155	0.0	8.47	7.7				
08/22/2017	22:01:00	174	0.0	8.47	7.7				
08/22/2017	22:02:40	618	6.5	10.79	10.1				
08/22/2017	22:02:43	647	6.5	10.81	10.4	Start Pumping Spacer			
08/22/2017	22:04:20	607	6.6	10.98	20.8				
08/22/2017	22:06:00	519	6.2	11.07	31.7				
08/22/2017	22:07:40	627	6.4	11.07	42.3				
08/22/2017	22:09:20	548	6.6	10.89	52.3				
08/22/2017	22:11:00	494	6.0	10.96	62.8				
08/22/2017	22:12:40	526	6.5	10.91	73.6				

Well		Field		Job Start		Customer		Job Number	
Cannon 29N-4HZ 0631719258		Wattensburg		Aug/22/2017		Anadarko		D8WD-00505	
Date	Time 24-hr clock	Treating Pressure PSI	Flow Rate B/M	Density LB/G	Volume BBL	Message			
08/22/2017	22:16:00	463	6.5	10.81	95.0				
08/22/2017	22:16:19	30	0.3	10.84	96.6	End Spacer			
08/22/2017	22:16:20	25	0.3	10.84	96.6	Drop Bottom Plug			
08/22/2017	22:17:40	8	0.0	10.81	96.6				
08/22/2017	22:19:20	6	0.0	10.81	0.0				
08/22/2017	22:20:52	5	0.0	10.82	0.0	Start Cement Slurry			
08/22/2017	22:21:00	9	0.7	10.91	0.0				
08/22/2017	22:21:48	467	4.9	11.71	3.3	Start Mixing Lead Slurry			
08/22/2017	22:22:40	457	4.8	11.95	7.5				
08/22/2017	22:22:58	460	4.8	12.04	9.0	12.0 ppg; 460 sks			
08/22/2017	22:22:59	460	4.8	12.03	9.1	Yield= 1.85 cuft/sk			
08/22/2017	22:23:00	488	4.8	12.03	9.2	Mix Water= 7.7 gal/sk			
08/22/2017	22:24:20	413	4.8	12.01	15.6				
08/22/2017	22:24:55	407	4.8	11.98	18.4	Wet Sample Taken			
08/22/2017	22:24:56	407	4.8	11.98	18.5	Dry Sample Taken			
08/22/2017	22:26:00	628	6.7	11.98	24.0				
08/22/2017	22:27:40	368	4.9	11.90	34.3				
08/22/2017	22:29:20	266	4.8	11.93	42.4				
08/22/2017	22:31:00	514	6.7	11.87	53.2				
08/22/2017	22:32:40	492	6.7	11.90	64.4				
08/22/2017	22:34:20	462	6.7	11.96	75.6				
08/22/2017	22:36:00	419	6.7	11.84	86.8				
08/22/2017	22:37:40	422	6.7	11.93	98.0				
08/22/2017	22:39:20	418	6.7	11.94	109.3				
08/22/2017	22:41:00	432	6.7	11.92	120.5				
08/22/2017	22:42:40	416	6.8	11.92	131.8				
08/22/2017	22:44:20	233	4.9	12.06	141.8				
08/22/2017	22:46:00	209	4.9	12.02	150.0				
08/22/2017	22:47:00	231	4.9	12.18	154.8	End Lead Slurry			
08/22/2017	22:47:35	251	4.9	13.40	157.7	Start Mixing Tail Slurry			
08/22/2017	22:47:40	247	4.9	13.40	158.1				
08/22/2017	22:47:47	268	4.9	13.46	158.7	13.5 ppg; 760 sks			
08/22/2017	22:47:48	268	4.9	13.47	158.8	Yield = 1.66 cuft/sk			
08/22/2017	22:49:20	434	6.7	13.58	167.3				
08/22/2017	22:49:49	425	6.8	13.50	170.5	Wet Sample Taken			
08/22/2017	22:50:33	558	8.2	13.58	175.7	Dry Sample Taken			
08/22/2017	22:51:00	566	8.2	13.59	179.4				
08/22/2017	22:52:40	556	8.2	13.54	193.1				
08/22/2017	22:54:20	554	8.2	13.62	206.8				
08/22/2017	22:56:00	538	8.2	13.56	220.4				
08/22/2017	22:57:40	538	8.2	13.58	234.1				
08/22/2017	22:59:20	585	8.2	13.62	247.8				
08/22/2017	23:01:00	553	8.2	13.60	261.5				
08/22/2017	23:02:40	508	8.2	13.46	275.1				
08/22/2017	23:04:20	513	8.2	13.54	288.8				
08/22/2017	23:06:00	522	8.2	13.51	302.5				
08/22/2017	23:07:40	520	8.2	13.53	316.2				
08/22/2017	23:09:20	552	8.2	13.53	329.9				
08/22/2017	23:11:00	545	8.2	13.53	343.5				
08/22/2017	23:12:40	484	8.2	13.32	357.2				
08/22/2017	23:14:20	169	4.8	12.90	366.5				
08/22/2017	23:16:00	23	0.0	12.92	368.4				
08/22/2017	23:17:40	98	2.7	13.59	370.9				
08/22/2017	23:18:34	13	0.0	13.74	372.9	End Tail Slurry			

Well		Field		Job Start		Customer		Job Number	
Cannon 29N-4HZ 0631719258		Wattensburg		Aug/22/2017		Anadarko		D8WD-00505	
Date	Time 24-hr clock	Treating Pressure PSI	Flow Rate B/M	Density LB/G	Volume BBL	Message			
08/22/2017	23:19:20	13	0.0	13.60	372.9				
08/22/2017	23:21:00	11	0.0	9.02	372.9				
08/22/2017	23:22:40	12	0.0	13.09	372.9				
08/22/2017	23:24:20	125	3.3	9.43	375.4				
08/22/2017	23:26:00	110	3.5	8.58	381.3				
08/22/2017	23:27:40	98	3.6	8.54	387.2				
08/22/2017	23:29:20	51	2.5	8.50	391.8				
08/22/2017	23:31:00	52	2.5	8.48	396.0				
08/22/2017	23:32:40	-5	0.0	8.51	397.5				
08/22/2017	23:34:17	-6	0.0	8.48	0.0	Drop Top Plug			
08/22/2017	23:34:18	-6	0.0	8.48	0.0	Start Displacement			
08/22/2017	23:34:20	-6	0.0	8.48	0.0				
08/22/2017	23:36:00	41	2.5	8.54	3.8				
08/22/2017	23:37:40	178	8.0	8.48	16.5				
08/22/2017	23:39:20	186	8.0	8.48	29.8				
08/22/2017	23:41:00	183	8.0	8.48	43.1				
08/22/2017	23:42:40	665	7.9	8.48	56.3				
08/22/2017	23:44:20	818	7.9	8.48	69.4				
08/22/2017	23:46:00	997	7.9	8.48	82.6				
08/22/2017	23:47:40	1144	7.9	8.48	95.8				
08/22/2017	23:49:20	1340	7.8	8.48	108.9				
08/22/2017	23:51:00	1541	7.9	8.48	121.9				
08/22/2017	23:52:40	1745	7.8	8.48	135.0				
08/22/2017	23:54:20	1899	7.8	8.48	148.0				
08/22/2017	23:56:00	2114	7.8	8.48	161.1				
08/22/2017	23:57:40	2167	7.8	8.48	174.0				
08/22/2017	23:59:20	2214	7.8	8.48	187.0				
08/23/2017	00:01:00	2246	7.8	8.48	200.0				
08/23/2017	00:02:40	2315	7.8	8.48	213.0				
08/23/2017	00:04:20	2384	7.8	8.48	226.0				
08/23/2017	00:06:00	2424	7.8	8.48	239.0				
08/23/2017	00:07:40	2491	7.7	8.48	251.9				
08/23/2017	00:09:20	2224	6.0	8.48	264.4				
08/23/2017	00:11:00	2220	6.0	8.48	274.4				
08/23/2017	00:12:40	1780	2.1	8.47	280.6				
08/23/2017	00:14:20	1829	2.3	8.47	284.3				
08/23/2017	00:16:00	1866	2.3	8.47	288.1				
08/23/2017	00:17:40	1815	2.3	8.47	291.9				
08/23/2017	00:18:00	2488	0.2	8.47	292.5	Bump Top Plug			
08/23/2017	00:18:01	2453	0.1	8.47	292.5	End Displacement			
08/23/2017	00:19:17	2423	0.0	8.47	292.5	Spacer 30 bbls To Surface			
08/23/2017	00:19:20	2451	0.0	8.47	292.5				
08/23/2017	00:21:00	-16	0.0	8.47	292.5				
08/23/2017	00:21:03	-17	0.0	8.47	292.5	Bleed Off/Check Floats			
08/23/2017	00:21:30	-9	0.0	8.47	292.5	3.5 bbls Back			
08/23/2017	00:22:00	-12	0.0	8.47	292.5	15 min Casing Test			
08/23/2017	00:22:40	376	1.1	8.47	292.8				
08/23/2017	00:24:20	3090	0.0	8.48	295.5				
08/23/2017	00:26:00	3105	0.0	8.47	295.5				
08/23/2017	00:27:40	3127	0.0	8.48	295.5				
08/23/2017	00:29:20	3160	0.0	8.47	295.5				
08/23/2017	00:31:00	3192	0.0	8.47	295.5				
08/23/2017	00:32:40	3224	0.0	8.47	295.5				
08/23/2017	00:34:20	3256	0.0	8.47	295.5				

Well Cannon 29N-4HZ 0631719258		Field Wattenburg		Job Start Aug/22/2017	Customer Anadarko		Job Number D8WD-00505
Date	Time 24-hr clock	Treating Pressure PSI	Flow Rate B/M	Density LB/G	Volume BBL	Message	
08/23/2017	00:37:40	3318	0.0	8.47	295.5		
08/23/2017	00:39:20	3349	0.0	8.47	295.5		
08/23/2017	00:41:00	-17	0.0	8.47	295.5		

Post Job Summary

Average Pump Rates, bbl/min				Volume of Fluid Injected, bbl			
Slurry 6.2	N2	Mud	Maximum Rate 8.2	Total Slurry 377.0	Mud 0.0	Spacer 80.0	N2
Treating Pressure Summary, psi				Breakdown Fluid			
Maximum 3000	Final 2700	Average 1089	Bump Plug to 2700	Breakdown	Type	Volume bbl	Density lb/gal
Avg. N2 Percent %	Designed Slurry Volume 377.0 bbl		Displacement 284.4 bbl	Mix Water Temp 65 degF	Cement Circulated to Surface? <input type="checkbox"/>	Volume bbl	
					Washed Thru Perfs <input type="checkbox"/>	To ft	
Customer or Authorized Representative Joe Wallem			Schlumberger Supervisor Michael Lopez		Circulation Lost <input type="checkbox"/>	Job Completed <input checked="" type="checkbox"/>	
					-	-	