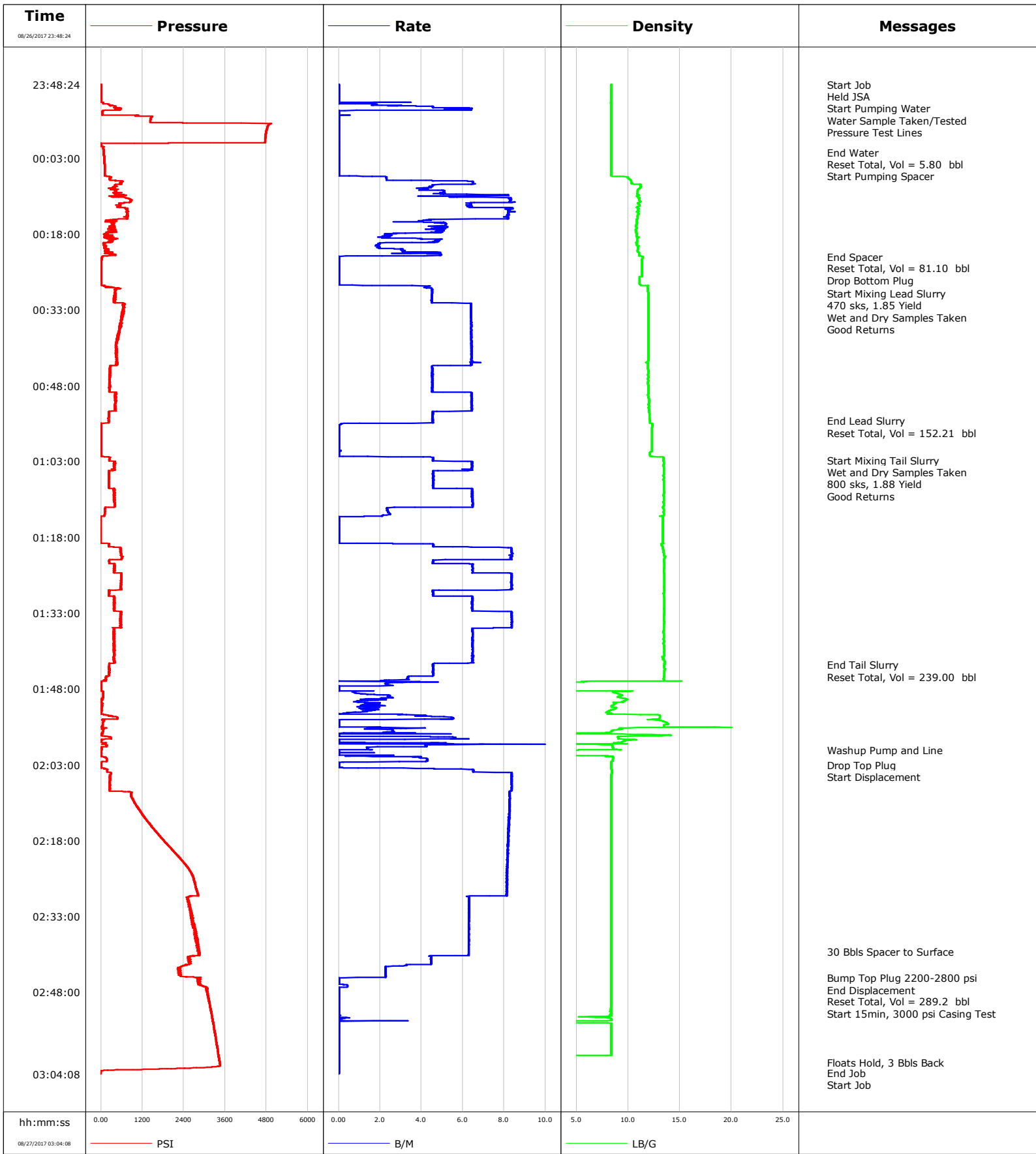


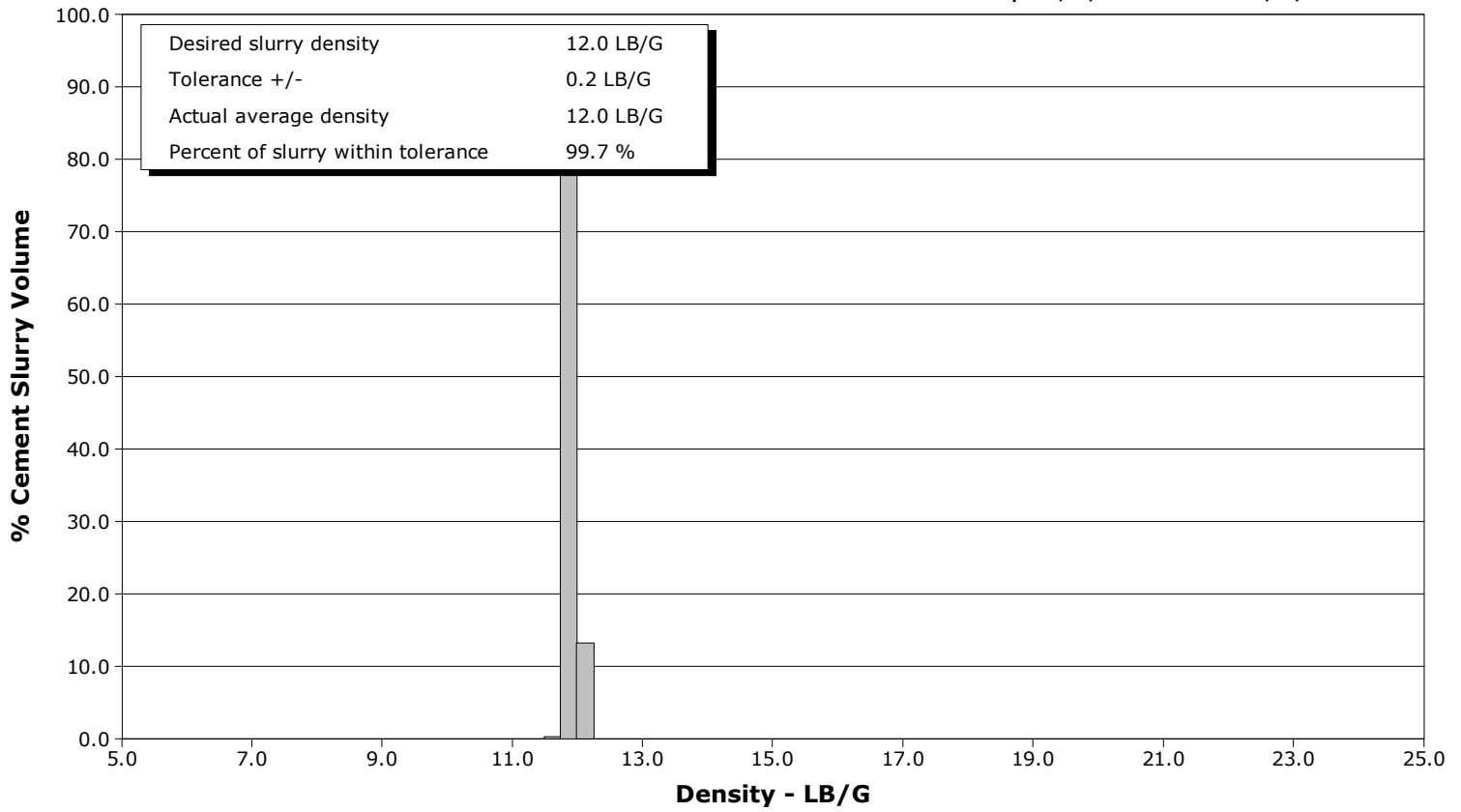
Well	Cannon 29C-4HZ	Client	Anadarko
Field	Wattenberg	SIR No.	DMBW-01357
Engineer	Ryan Drilling/Ken Sovereign	Job Type	5.5" Production
Country	United States	Job Date	08-26-2017



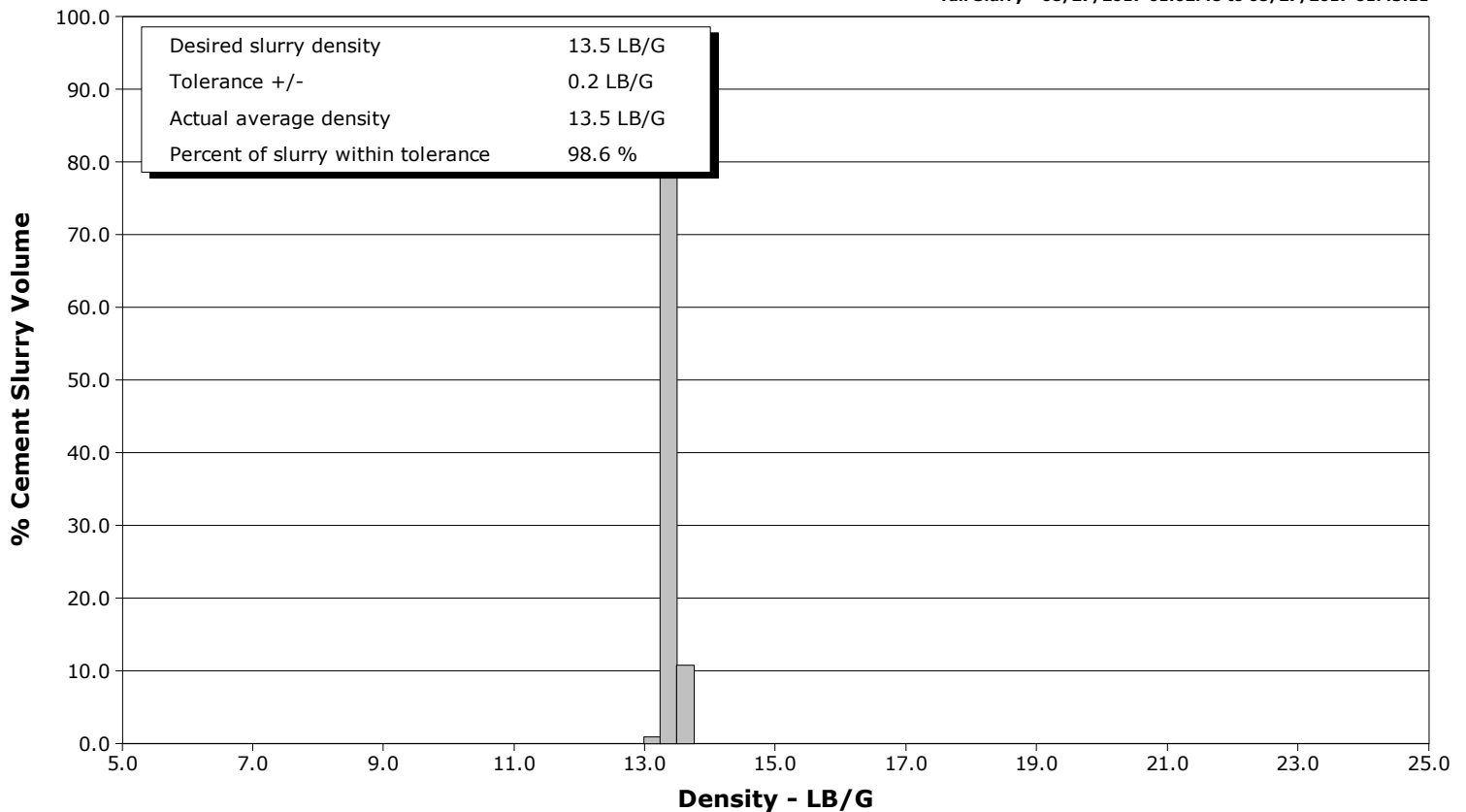
Well Cannon 29C-4HZ
Field Wattenberg
Engineer Ryan Drilling/Ken Sovereign
Country United States

Client Anadarko
SIR No. DMBW-01357
Job Type 5.5" Production
Job Date 08-26-2017

Lead Slurry - 08/27/2017 00:29:44 to 08/27/2017 00:55:00



Tail Slurry - 08/27/2017 01:02:48 to 08/27/2017 01:43:11



				Customer			Job Number		
				Anadarko			DMBW-01357		
Well		Location (legal)			Schlumberger Location			Job Start	
Cannon 29C-4HZ		CWY			CWY			Aug/26/2017	
Field		Formation Name/Type		Deviation	Bit Size	Well MD		Well TVD	
Wattenberg		Shale		90 deg	7.9 in	13134.0 ft		7221.0 ft	
County		State/Province		BHP	BHST	BHCT	Pore Press. Gradient		
Weld		Colorado		psi	225 degF	220 degF	lb/gal		
Well Master		API/UWI							
0631719373									
Rig Name	Drilled For		Service Via	Casing/Liner					
Precision 564	Oil & Gas		Land						
Offshore Zone	Well Class		Well Type	Depth, ft	Size, in	Weight, lb/ft	Grade	Thread	
	New		Development	1869.0	9.6	36.0	j55	Itc	
				13134.0	5.5	20.0	p110	Itc	
Drilling Fluid Type		Max. Density	Plastic Viscosity	Tubing/Drill Pipe					
		lb/gal	cP						
Service Line	Job Type		T/D	Depth, ft	Size, in	Weight, lb/ft	Grade	Thread	
Cementing	5.5" Production								
Max. Allowed Tub. Press	Max. Allowed Ann. Press		WH Connection	Perforations/Open Hole					
psi	psi		Double Cement head						
Service Instructions				Top, ft	Bottom, ft	shot/ft	No. of Shots	Total Interval	
5.5" Production Casing Cementing				ft	ft			ft	
				ft	ft			Diameter	
				ft	ft			in	
Treat Down		Displacement		Packer Type		Packer Depth			
Casing		289.2 bbl				ft			
Tubing Vol.		Casing Vol.		Annular Vol.		Openhole Vol.			
bbl		bbl		93.0 bbl		347.0 bbl			
Casing/Tubing Secured		1 Hole Vol. Circulated prior to Cement		Casing Tools			Squeeze Job		
<input checked="" type="checkbox"/>		<input checked="" type="checkbox"/>							
Lift Pressure		Shoe Type		Shoe Depth		Squeeze Type			
2200 psi		Float		13134.0 ft					
Pipe Rotated		Pipe Reciprocated		Stage Tool Type		Tool Depth			
<input type="checkbox"/>		<input type="checkbox"/>				ft			
No. Centralizers		Top Plugs	Bottom Plugs	Stage Tool Depth		Tail Pipe Size			
		1	1	ft		in			
Cement Head Type				Collar Type		Tail Pipe Depth			
				Float		ft			
Job Scheduled For		Arrived on Location		Leave Location		Collar Depth		Sqz. Total Vol.	
Aug/26/2017 20:30		Aug/26/2017 20:30		Aug/26/2017 04:00		13042.0 ft		bbl	
Date	Time 24-hr clock	Treating Pressure PSI	Flow Rate B/M	Density LB/G	Volume BBL	Message			
08/26/2017	23:48:24	3	0.0	8.38	11.7	Started Acquisition			
08/26/2017	23:48:26	2	0.0	8.38	11.7	Start Job			
08/26/2017	23:48:28	3	0.0	8.38	11.7	Held JSA			
08/26/2017	23:48:31	2	0.0	8.38	11.7	Start Pumping Water			
08/26/2017	23:48:33	3	0.0	8.38	11.7	Water Sample Taken/Tested			
08/26/2017	23:48:35	2	0.0	8.38	11.7	Pressure Test Lines			
08/26/2017	23:49:24	4	0.0	8.38	11.7				
08/26/2017	23:50:24	5	0.0	8.38	11.7				
08/26/2017	23:51:24	7	0.0	8.38	11.7				
08/26/2017	23:52:24	221	1.8	8.36	0.4				
08/26/2017	23:53:24	558	6.4	8.37	4.8				
08/26/2017	23:54:24	38	0.0	8.37	5.8				
08/26/2017	23:55:24	1436	0.0	8.37	5.8				
08/26/2017	23:56:24	4864	0.0	8.37	5.8				
08/26/2017	23:57:24	4803	0.0	8.37	5.8				
08/26/2017	23:58:24	4776	0.0	8.37	5.8				
08/26/2017	23:59:24	4759	0.0	8.37	5.8				
08/27/2017	00:00:24	1	0.0	8.37	5.8				
08/27/2017	00:01:24	73	0.0	8.36	5.8				
08/27/2017	00:01:52	78	0.0	8.37	5.8	End Water			
08/27/2017	00:01:53	79	0.0	8.37	5.8	Reset Total, Vol = 5.80 bbl			

Well Cannon 29C-4HZ			Field Wattenberg		Job Start Aug/26/2017	Customer Anadarko		Job Number DMBW-01357
Date	Time 24-hr clock	Treating Pressure PSI	Flow Rate B/M	Density LB/G	Volume BBL	Message		
08/27/2017	00:02:24	85	0.0	8.37	5.8			
08/27/2017	00:03:24	96	0.0	8.37	5.8			
08/27/2017	00:04:24	103	0.0	8.37	5.8			
08/27/2017	00:05:24	106	0.0	8.37	5.8			
08/27/2017	00:06:24	108	0.0	8.37	5.8			
08/27/2017	00:07:24	424	3.5	10.25	7.7			
08/27/2017	00:08:24	400	4.6	11.17	13.5			
08/27/2017	00:09:24	424	5.1	10.90	17.9			
08/27/2017	00:10:24	706	8.2	10.98	23.6			
08/27/2017	00:11:24	859	8.3	11.10	31.0			
08/27/2017	00:12:24	564	6.4	11.12	38.1			
08/27/2017	00:13:24	779	8.2	10.97	45.7			
08/27/2017	00:14:24	754	8.1	10.89	53.9			
08/27/2017	00:15:24	430	4.0	10.81	60.8			
08/27/2017	00:16:24	389	5.0	10.79	65.5			
08/27/2017	00:17:24	435	5.1	10.76	70.5			
08/27/2017	00:18:24	136	2.3	10.81	73.9			
08/27/2017	00:19:24	320	4.7	10.86	77.4			
08/27/2017	00:20:24	93	1.9	11.06	80.3			
08/27/2017	00:21:24	164	3.2	10.91	82.7			
08/27/2017	00:22:24	57	0.1	11.33	86.9			
08/27/2017	00:22:26	54	0.0	11.37	86.9	End Spacer		
08/27/2017	00:22:27	50	0.0	11.38	86.9	Reset Total, Vol = 81.10 bbl		
08/27/2017	00:22:29	42	0.0	11.39	86.9	Drop Bottom Plug		
08/27/2017	00:23:24	13	0.0	11.35	86.9			
08/27/2017	00:24:24	12	0.0	11.34	86.9			
08/27/2017	00:25:24	11	0.0	11.33	86.9			
08/27/2017	00:26:24	11	0.0	11.32	86.9			
08/27/2017	00:27:24	10	0.0	11.08	86.9			
08/27/2017	00:28:24	227	4.3	11.89	87.7			
08/27/2017	00:29:24	411	4.5	11.92	92.2			
08/27/2017	00:29:44	397	4.5	11.96	93.7	Start Mixing Lead Slurry		
08/27/2017	00:29:46	396	4.5	11.96	93.8	470 sks, 1.85 Yield		
08/27/2017	00:30:24	412	4.5	11.95	96.7			
08/27/2017	00:31:24	361	4.5	11.94	101.2			
08/27/2017	00:32:24	646	6.4	11.97	107.0			
08/27/2017	00:33:24	666	6.4	11.97	113.4			
08/27/2017	00:34:24	625	6.4	11.96	119.8			
08/27/2017	00:35:24	577	6.4	11.96	126.2			
08/27/2017	00:36:24	533	6.4	11.96	132.6			
08/27/2017	00:37:24	508	6.4	11.97	139.0			
08/27/2017	00:38:24	481	6.4	11.95	145.4			
08/27/2017	00:39:24	476	6.4	11.95	151.9			
08/27/2017	00:40:24	439	6.4	11.96	158.3			
08/27/2017	00:41:24	461	6.4	11.97	164.7			
08/27/2017	00:42:24	440	6.4	11.95	171.1			
08/27/2017	00:43:24	437	6.7	11.83	177.5			
08/27/2017	00:44:24	274	4.5	11.90	183.3			
08/27/2017	00:45:24	251	4.5	11.97	187.8			
08/27/2017	00:46:24	243	4.5	11.95	192.3			
08/27/2017	00:47:24	257	4.5	11.92	196.9			
08/27/2017	00:48:24	256	4.5	11.96	201.4			
08/27/2017	00:49:24	411	6.4	11.95	206.1			
08/27/2017	00:50:24	441	6.4	11.96	212.5			

Well Cannon 29C-4HZ			Field Wattenberg		Job Start Aug/26/2017	Customer Anadarko		Job Number DMBW-01357
Date	Time 24-hr clock	Treating Pressure PSI	Flow Rate B/M	Density LB/G	Volume BBL	Message		
08/27/2017	00:52:24	413	6.4	11.98	225.4			
08/27/2017	00:53:24	235	4.5	12.03	231.2			
08/27/2017	00:54:24	217	4.5	12.04	235.8			
08/27/2017	00:55:00	217	4.5	12.11	238.5	End Lead Slurry		
08/27/2017	00:55:07	221	4.5	12.10	239.0	Reset Total, Vol = 152.21 bbl		
08/27/2017	00:55:24	214	4.5	12.11	240.3			
08/27/2017	00:56:24	3	0.0	12.31	240.6			
08/27/2017	00:57:24	4	0.0	12.29	240.6			
08/27/2017	00:58:24	5	0.0	12.28	240.6			
08/27/2017	00:59:24	5	0.0	12.28	240.6			
08/27/2017	01:00:24	4	0.0	12.28	240.6			
08/27/2017	01:01:24	5	0.0	12.13	240.6			
08/27/2017	01:02:24	246	4.6	13.41	242.1			
08/27/2017	01:02:48	239	4.6	13.41	244.0	Start Mixing Tail Slurry		
08/27/2017	01:02:50	242	4.6	13.41	244.1	Wet and Dry Samples Taken		
08/27/2017	01:02:51	242	4.6	13.41	244.2	800 sks, 1.88 Yield		
08/27/2017	01:03:24	373	6.5	13.45	247.5			
08/27/2017	01:04:24	382	6.4	13.44	254.0			
08/27/2017	01:05:24	228	4.6	13.43	259.3			
08/27/2017	01:06:24	231	4.6	13.43	263.9			
08/27/2017	01:07:24	225	4.6	13.45	268.5			
08/27/2017	01:08:24	365	6.5	13.46	273.1			
08/27/2017	01:09:24	399	6.5	13.46	279.6			
08/27/2017	01:10:24	380	6.5	13.43	286.0			
08/27/2017	01:11:24	396	6.5	13.44	292.5			
08/27/2017	01:12:24	113	2.3	13.44	297.7			
08/27/2017	01:13:24	109	2.5	13.43	300.0			
08/27/2017	01:14:24	-3	0.0	13.33	301.1			
08/27/2017	01:15:24	-3	0.0	13.33	301.1			
08/27/2017	01:16:24	-3	0.0	13.33	301.1			
08/27/2017	01:17:24	-2	0.0	13.33	301.1			
08/27/2017	01:18:24	-1	0.0	13.33	301.1			
08/27/2017	01:19:24	228	4.6	13.21	301.8			
08/27/2017	01:20:24	564	8.3	13.38	308.0			
08/27/2017	01:21:24	581	8.4	13.46	316.4			
08/27/2017	01:22:24	574	8.2	13.47	324.7			
08/27/2017	01:23:24	385	6.5	13.48	329.7			
08/27/2017	01:24:24	382	6.5	13.43	336.2			
08/27/2017	01:25:24	588	8.3	13.48	343.3			
08/27/2017	01:26:24	588	8.4	13.50	351.7			
08/27/2017	01:27:24	589	8.3	13.48	360.0			
08/27/2017	01:28:24	599	8.4	13.50	368.4			
08/27/2017	01:29:24	236	4.6	13.43	373.1			
08/27/2017	01:30:24	391	6.5	13.49	379.1			
08/27/2017	01:31:24	400	6.5	13.49	385.6			
08/27/2017	01:32:24	387	6.5	13.48	392.0			
08/27/2017	01:33:24	582	8.4	13.47	399.9			
08/27/2017	01:34:24	570	8.4	13.47	408.3			
08/27/2017	01:35:24	553	8.4	13.47	416.6			
08/27/2017	01:36:24	366	6.4	13.45	424.2			
08/27/2017	01:37:24	369	6.5	13.44	430.6			
08/27/2017	01:38:24	381	6.5	13.46	437.1			
08/27/2017	01:39:24	389	6.5	13.47	443.6			
08/27/2017	01:40:24	368	6.5	13.48	450.0			

Well Cannon 29C-4HZ			Field Wattenberg		Job Start Aug/26/2017	Customer Anadarko		Job Number DMBW-01357
Date	Time 24-hr clock	Treating Pressure PSI	Flow Rate B/M	Density LB/G	Volume BBL	Message		
08/27/2017	01:42:24	392	6.5	13.50	463.0			
08/27/2017	01:43:11	236	4.6	13.51	467.6	End Tail Slurry		
08/27/2017	01:43:24	236	4.6	13.45	468.6			
08/27/2017	01:44:24	245	4.6	13.49	473.1			
08/27/2017	01:44:36	224	4.6	13.49	474.0	Reset Total, Vol = 239.00 bbl		
08/27/2017	01:45:24	219	4.6	13.47	477.7			
08/27/2017	01:46:24	74	2.1	13.67	480.9			
08/27/2017	01:47:24	9	0.0	0.99	483.3			
08/27/2017	01:48:24	9	0.7	5.29	483.3			
08/27/2017	01:49:24	61	2.4	9.21	484.6			
08/27/2017	01:50:24	10	0.9	9.61	486.6			
08/27/2017	01:51:24	19	1.2	8.48	488.0			
08/27/2017	01:52:24	13	1.3	8.05	489.4			
08/27/2017	01:53:24	340	4.4	13.05	491.2			
08/27/2017	01:54:24	80	0.0	13.45	494.5			
08/27/2017	01:55:24	45	0.0	13.44	494.5			
08/27/2017	01:56:24	63	2.7	8.38	496.7			
08/27/2017	01:57:24	189	4.0	9.07	497.8			
08/27/2017	01:58:24	7	0.0	9.49	500.7			
08/27/2017	01:59:24	159	4.3	8.47	504.3			
08/27/2017	02:00:02	14	0.0	7.58	505.4	Washup Pump and Line		
08/27/2017	02:00:24	5	0.0	3.68	505.4			
08/27/2017	02:01:24	45	3.8	8.04	505.9			
08/27/2017	02:02:24	29	2.9	8.37	510.0			
08/27/2017	02:03:04	4	0.0	8.37	510.1	Drop Top Plug		
08/27/2017	02:03:05	4	0.0	8.37	510.1	Start Displacement		
08/27/2017	02:03:24	3	0.0	8.37	510.1			
08/27/2017	02:04:24	181	6.5	8.40	514.5			
08/27/2017	02:05:24	268	8.4	8.37	522.7			
08/27/2017	02:06:24	260	8.4	8.37	531.1			
08/27/2017	02:07:24	261	8.4	8.38	539.5			
08/27/2017	02:08:24	864	8.2	8.37	547.8			
08/27/2017	02:09:24	887	8.3	8.38	556.1			
08/27/2017	02:10:24	968	8.3	8.37	564.3			
08/27/2017	02:11:24	1071	8.3	8.37	572.6			
08/27/2017	02:12:24	1158	8.2	8.38	580.8			
08/27/2017	02:13:24	1261	8.2	8.37	589.1			
08/27/2017	02:14:24	1376	8.2	8.37	597.3			
08/27/2017	02:15:24	1488	8.2	8.37	605.5			
08/27/2017	02:16:24	1613	8.2	8.37	613.7			
08/27/2017	02:17:24	1752	8.2	8.37	621.9			
08/27/2017	02:18:24	1875	8.2	8.37	630.1			
08/27/2017	02:19:24	2013	8.2	8.37	638.3			
08/27/2017	02:20:24	2142	8.1	8.37	646.5			
08/27/2017	02:21:24	2290	8.2	8.37	654.6			
08/27/2017	02:22:24	2410	8.2	8.37	662.8			
08/27/2017	02:23:24	2539	8.1	8.37	670.9			
08/27/2017	02:24:24	2620	8.1	8.37	679.1			
08/27/2017	02:25:24	2679	8.1	8.37	687.2			
08/27/2017	02:26:24	2716	8.1	8.37	695.3			
08/27/2017	02:27:24	2761	8.1	8.37	703.4			
08/27/2017	02:28:24	2801	8.1	8.37	711.6			
08/27/2017	02:29:24	2525	6.3	8.37	718.9			
08/27/2017	02:30:24	2543	6.3	8.37	725.2			

Well Cannon 29C-4HZ			Field Wattenberg		Job Start Aug/26/2017	Customer Anadarko		Job Number DMBW-01357
Date	Time 24-hr clock	Treating Pressure PSI	Flow Rate B/M	Density LB/G	Volume BBL	Message		
08/27/2017	02:32:24	2634	6.3	8.37	737.8			
08/27/2017	02:33:24	2610	6.3	8.37	744.0			
08/27/2017	02:34:24	2664	6.3	8.37	750.3			
08/27/2017	02:35:24	2731	6.3	8.37	756.6			
08/27/2017	02:36:24	2760	6.3	8.37	762.9			
08/27/2017	02:37:24	2733	6.3	8.37	769.2			
08/27/2017	02:38:24	2786	6.3	8.37	775.5			
08/27/2017	02:39:24	2826	6.3	8.37	781.8			
08/27/2017	02:39:57	2840	6.3	8.37	785.2	30 Bbls Spacer to Surface		
08/27/2017	02:40:24	2849	6.3	8.37	788.0			
08/27/2017	02:41:24	2547	4.5	8.37	793.2			
08/27/2017	02:42:24	2559	4.5	8.36	797.6			
08/27/2017	02:43:24	2222	2.3	8.36	800.5			
08/27/2017	02:44:24	2309	2.3	8.36	802.7			
08/27/2017	02:45:09	2896	0.0	8.37	804.3	Bump Top Plug 2200-2800 psi		
08/27/2017	02:45:10	2763	0.0	8.37	804.3	End Displacement		
08/27/2017	02:45:12	2785	0.0	8.37	804.3	Reset Total, Vol = 289.2 bbl		
08/27/2017	02:45:24	2798	0.0	8.37	804.3			
08/27/2017	02:46:24	2869	0.0	8.36	804.3			
08/27/2017	02:46:59	3048	0.0	8.36	804.5	Start 15min, 3000 psi Casing Test		
08/27/2017	02:47:24	3093	0.0	8.37	804.5			
08/27/2017	02:48:24	3098	0.0	8.37	804.5			
08/27/2017	02:49:24	3125	0.0	8.37	804.5			
08/27/2017	02:50:24	3149	0.0	8.36	804.5			
08/27/2017	02:51:24	3180	0.0	8.30	804.5			
08/27/2017	02:52:24	3206	0.0	8.27	804.5			
08/27/2017	02:53:24	3234	0.0	8.36	804.6			
08/27/2017	02:54:24	3259	0.0	8.36	804.7			
08/27/2017	02:55:24	3286	0.0	8.36	804.7			
08/27/2017	02:56:24	3310	0.0	8.36	804.7			
08/27/2017	02:57:24	3334	0.0	8.36	804.7			
08/27/2017	02:58:24	3357	0.0	8.35	804.7			
08/27/2017	02:59:24	3381	0.0	8.36	804.7			
08/27/2017	03:00:24	3404	0.0	8.36	804.7			
08/27/2017	03:01:24	3427	0.0	0.05	804.7			
08/27/2017	03:01:52	3438	0.0	0.04	804.7	Floats Hold, 3 Bbls Back		
08/27/2017	03:02:24	3449	0.0	0.04	804.7			
08/27/2017	03:03:24	199	0.0	0.04	804.7			

Well Cannon 29C-4HZ	Field Wattenberg	Job Start Aug/26/2017	Customer Anadarko	Job Number DMBW-01357
-------------------------------	----------------------------	---------------------------------	-----------------------------	---------------------------------

Post Job Summary

Average Pump Rates, bbl/min					Volume of Fluid Injected, bbl			
Slurry 5.8	N2	Mud	Maximum Rate 10.0	Total Slurry 391.0	Mud 0.0	Spacer 80.0	N2	
Treating Pressure Summary, psi					Breakdown Fluid			
Maximum 4933	Final -5	Average 1039	Bump Plug to 2800	Breakdown	Type	Volume bbl	Density lb/gal	
Avg. N2 Percent %	Designed Slurry Volume 384.0 bbl	Displacement 289.0 bbl	Mix Water Temp 75 degF	Cement Circulated to Surface? <input type="checkbox"/>	Volume bbl	To ft		
				Washed Thru Perfs <input type="checkbox"/>				
Customer or Authorized Representative Jason Laub			Schlumberger Supervisor Ryan Drilling/Ken Sovereign		Circulation Lost <input type="checkbox"/>	Job Completed <input checked="" type="checkbox"/>		
					-	-		