

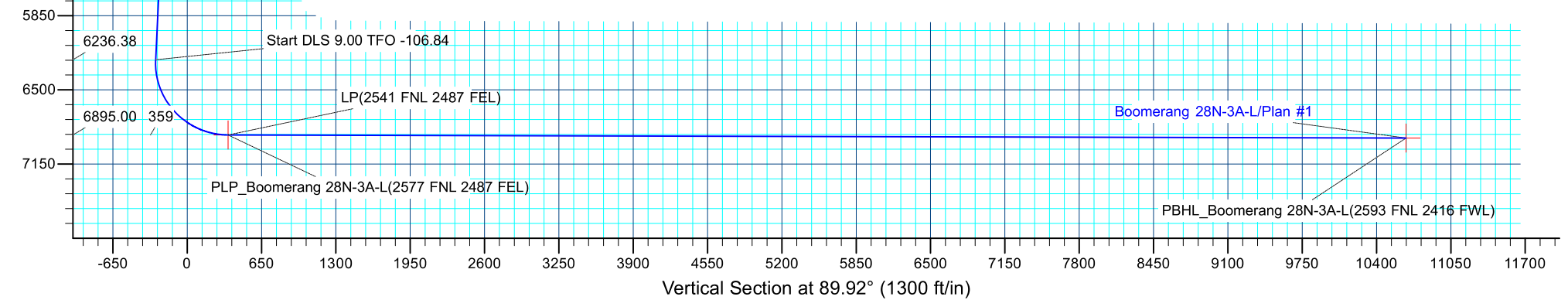
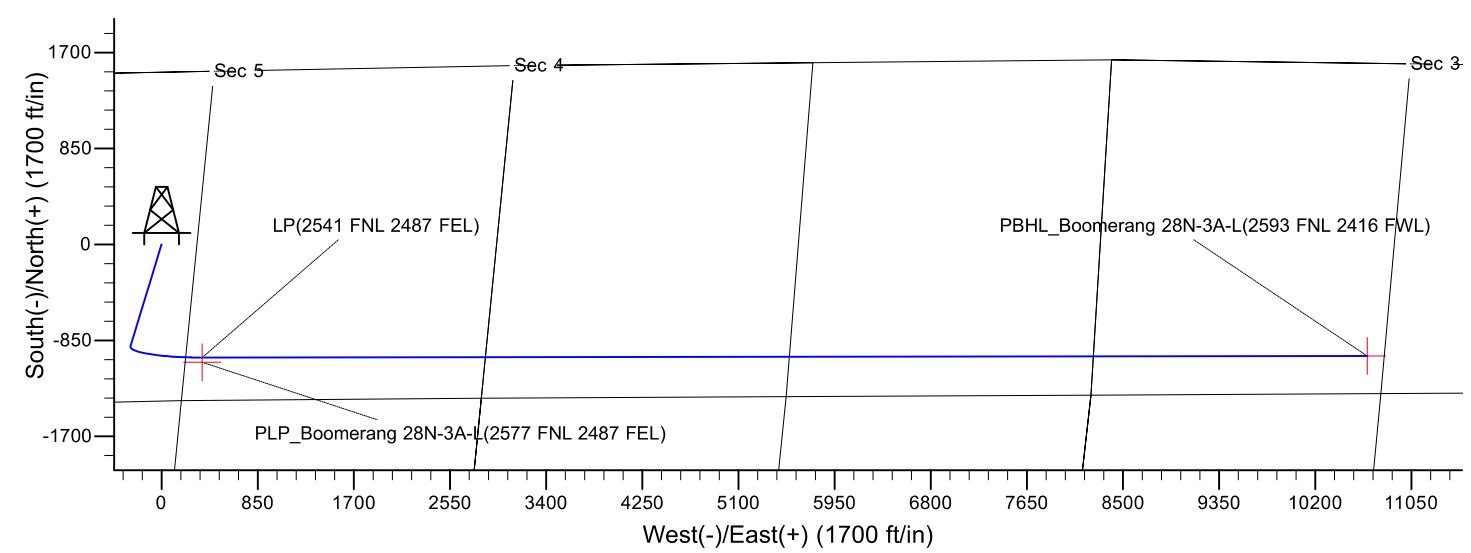
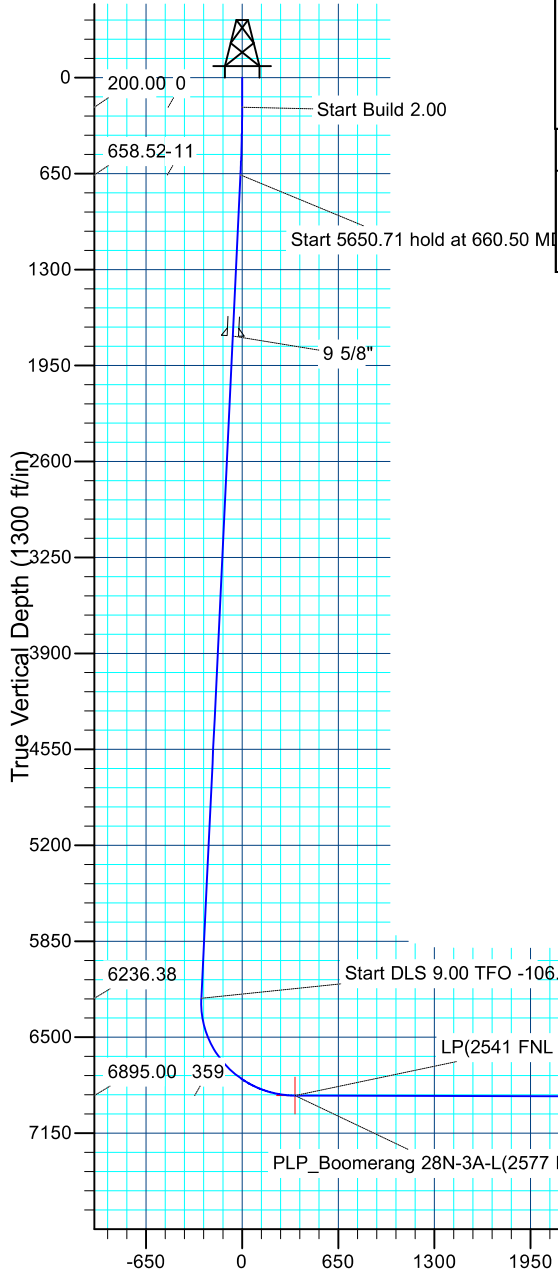
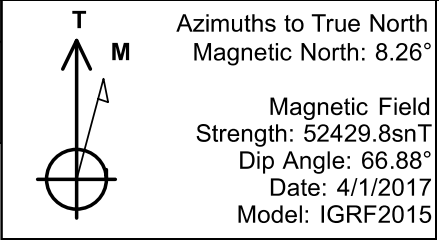


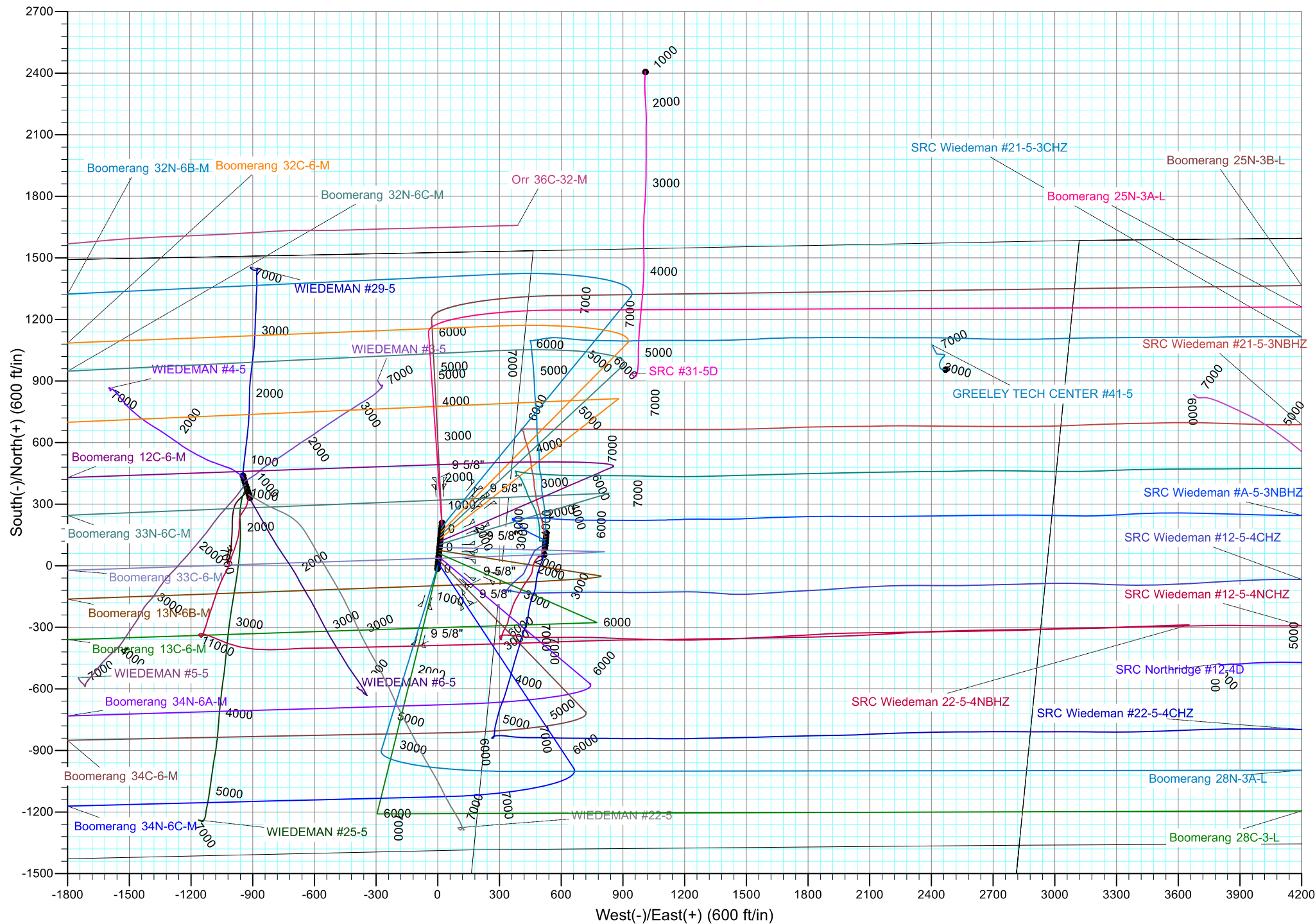
Project: SEC 5-T5N-R66W
Site: Boomerang 21-5
Well: Boomerang 28N-3A-L
Wellbore: OH
Design: Plan #1

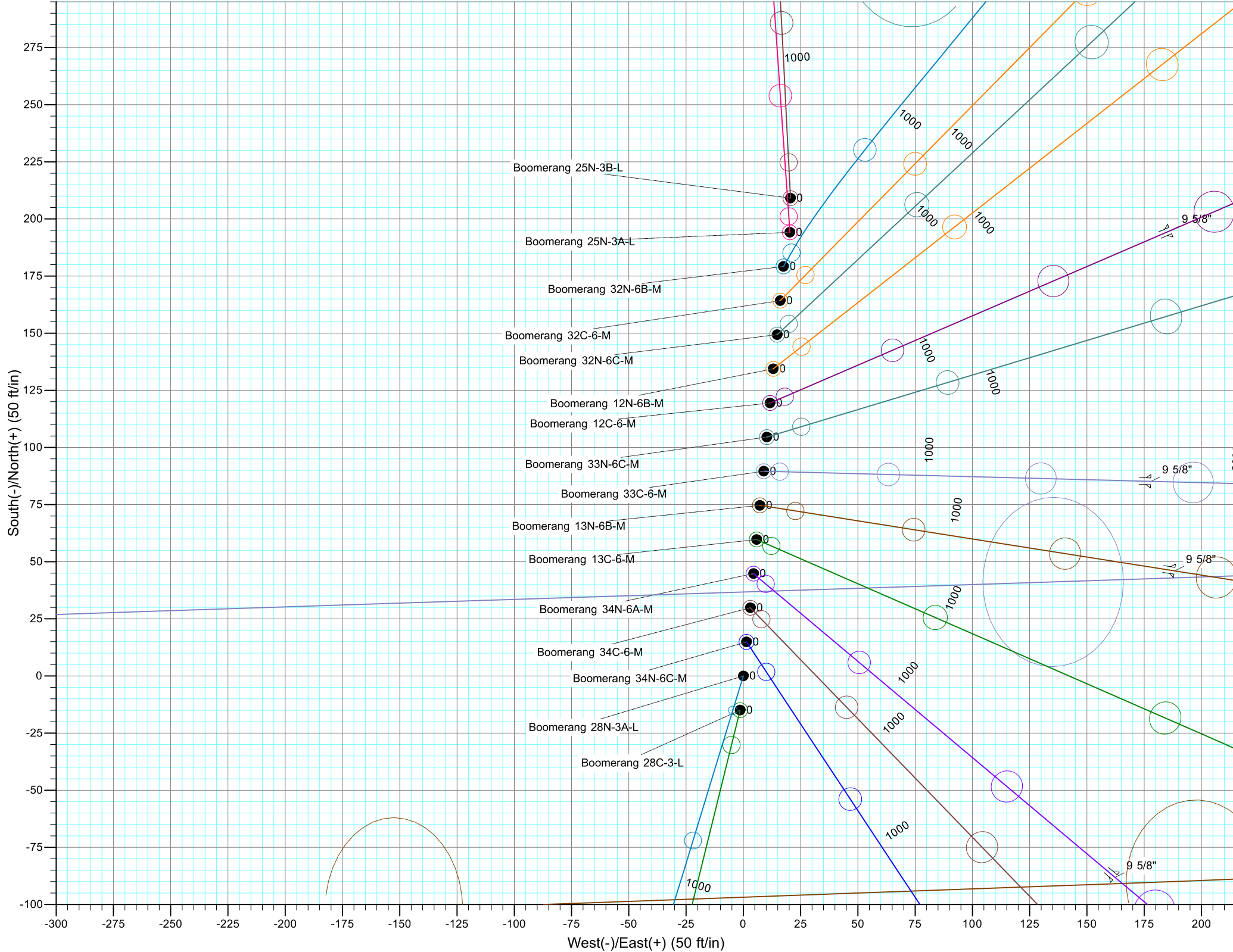
SECTION DETAILS										PROJECT DETAILS: SEC 5-T5N-R66W	
MD	Inc	Azi	TVD	+N/-S	+E/-W	Dleg	TFace	VSect	Target	Geodetic System: US State Plane 1983	
0.00	0.00	0.00	0.00	0.00	0.00	0.00	0.00	0.00		Datum: North American Datum 1983	
200.00	0.00	0.00	200.00	0.00	0.00	0.00	0.00	0.00		Ellipsoid: GRS 1980	
660.50	9.21	196.95	658.52	-35.33	-10.77	2.00	196.95	-10.82		Zone: Colorado Northern Zone	
6311.21	9.21	196.95	6236.38	-900.45	-274.44	0.00	0.00	-275.69		Colorado Northern Zone	
7339.40	89.85	89.92	6895.00	-1001.46	359.97	9.00	-106.84	358.57		System Datum: Mean Sea Level	
17638.91	89.85	89.92	6922.00	-987.85	10659.42	0.00	0.00	10658.04	PBHL		

DESIGN TARGET DETAILS								
Name	TVD	+N/-S	+E/-W	Northing	Easting	Latitude	Longitude	Shape
PLP	6895.00	-1044.43	359.40	1400290.82	3194231.46	40.4300950	-104.8023120	Point
- plan misses target center by 42.98ft at 7338.98ft MD (6895.00 TVD, -1001.46 N, 359.55 E)								
PBHL	6922.00	-987.85	10659.42	1400428.29	3204530.72	40.4302440	-104.7653130	Point
- plan hits target center								

CASING DETAILS			
TVD	MD	Name	Size
1750.00	1766.24	9 5/8"	9.625









Synergy Resources Corporation

SEC 5-T5N-R66W

Boomerang 21-5

Boomerang 28N-3A-L

OH

Plan: Plan #1

Standard Planning Report

05 April, 2017

Database:	EDM 5000.14 Single User Db	Local Co-ordinate Reference:	Well Boomerang 28N-3A-L
Company:	Synergy Resources Corporation	TVD Reference:	GL 4770+KB 20 @ 4790.00ft
Project:	SEC 5-T5N-R66W	MD Reference:	GL 4770+KB 20 @ 4790.00ft
Site:	Boomerang 21-5	North Reference:	True
Well:	Boomerang 28N-3A-L	Survey Calculation Method:	Minimum Curvature
Wellbore:	OH		
Design:	Plan #1		

Project	SEC 5-T5N-R66W		
Map System:	US State Plane 1983	System Datum:	Mean Sea Level
Geo Datum:	North American Datum 1983		
Map Zone:	Colorado Northern Zone		

Site	Boomerang 21-5				
Site Position:		Northing:	1,401,541.68 ft	Latitude:	40.4335360
From:	Lat/Long	Easting:	3,193,882.83 ft	Longitude:	-104.8035290
Position Uncertainty:	3.28 ft	Slot Radius:	13.200 in	Grid Convergence:	0.45 °

Well	Boomerang 28N-3A-L, 1526 FNL 2327 FWL					
Well Position	+N/-S	-209.12 ft	Northing:	1,401,332.40 ft	Latitude:	40.4329620
	+E/-W	-20.60 ft	Easting:	3,193,863.87 ft	Longitude:	-104.8036030
Position Uncertainty		3.28 ft	Wellhead Elevation:		Ground Level:	4,770.00 ft

Wellbore	OH				
Magnetics	Model Name	Sample Date	Declination (°)	Dip Angle (°)	Field Strength (nT)
	IGRF2015	4/1/2017	8.26	66.88	52,430

Design	Plan #1			
Audit Notes:				
Version:	Phase:	PLAN	Tie On Depth:	0.00
Vertical Section:	Depth From (TVD) (ft)	+N/-S (ft)	+E/-W (ft)	Direction (°)
	0.00	0.00	0.00	89.92

Plan Survey Tool Program	Date	4/5/2017		
Depth From (ft)	Depth To (ft)	Survey (Wellbore)	Tool Name	Remarks
1	0.00	17,638.51 Plan #1 (OH)	MWD+IFR1	
			OWSG MWD + IFR1	

Plan Sections										
Measured Depth (ft)	Inclination (°)	Azimuth (°)	Vertical Depth (ft)	+N/-S (ft)	+E/-W (ft)	Dogleg Rate (°/100ft)	Build Rate (°/100ft)	Turn Rate (°/100ft)	TFO (°)	Target
0.00	0.00	0.00	0.00	0.00	0.00	0.00	0.00	0.00	0.00	
200.00	0.00	0.00	200.00	0.00	0.00	0.00	0.00	0.00	0.00	
660.50	9.21	196.95	658.52	-35.33	-10.77	2.00	2.00	0.00	196.95	
6,311.21	9.21	196.95	6,236.38	-900.45	-274.44	0.00	0.00	0.00	0.00	
7,339.40	89.85	89.92	6,895.01	-1,001.46	359.97	9.00	7.84	-10.41	-106.84	
17,638.91	89.85	89.92	6,922.00	-987.85	10,659.43	0.00	0.00	0.00	0.00	PBHL_Boomerang 28

Database:	EDM 5000.14 Single User Db	Local Co-ordinate Reference:	Well Boomerang 28N-3A-L
Company:	Synergy Resources Corporation	TVD Reference:	GL 4770+KB 20 @ 4790.00ft
Project:	SEC 5-T5N-R66W	MD Reference:	GL 4770+KB 20 @ 4790.00ft
Site:	Boomerang 21-5	North Reference:	True
Well:	Boomerang 28N-3A-L	Survey Calculation Method:	Minimum Curvature
Wellbore:	OH		
Design:	Plan #1		

Planned Survey									
Measured Depth (ft)	Inclination (°)	Azimuth (°)	Vertical Depth (ft)	+N/-S (ft)	+E/-W (ft)	Vertical Section (ft)	Dogleg Rate (°/100ft)	Build Rate (°/100ft)	Turn Rate (°/100ft)
0.00	0.00	0.00	0.00	0.00	0.00	0.00	0.00	0.00	0.00
100.00	0.00	0.00	100.00	0.00	0.00	0.00	0.00	0.00	0.00
200.00	0.00	0.00	200.00	0.00	0.00	0.00	0.00	0.00	0.00
Start Build 2.00									
300.00	2.00	196.95	299.98	-1.67	-0.51	-0.51	2.00	2.00	0.00
400.00	4.00	196.95	399.84	-6.68	-2.03	-2.04	2.00	2.00	0.00
500.00	6.00	196.95	499.45	-15.01	-4.58	-4.60	2.00	2.00	0.00
600.00	8.00	196.95	598.70	-26.67	-8.13	-8.17	2.00	2.00	0.00
660.50	9.21	196.95	658.52	-35.33	-10.77	-10.82	2.00	2.00	0.00
Start 5650.71 hold at 660.50 MD									
700.00	9.21	196.95	697.51	-41.38	-12.61	-12.67	0.00	0.00	0.00
800.00	9.21	196.95	796.22	-56.69	-17.28	-17.36	0.00	0.00	0.00
900.00	9.21	196.95	894.93	-72.00	-21.94	-22.04	0.00	0.00	0.00
1,000.00	9.21	196.95	993.64	-87.31	-26.61	-26.73	0.00	0.00	0.00
1,100.00	9.21	196.95	1,092.35	-102.62	-31.27	-31.42	0.00	0.00	0.00
1,200.00	9.21	196.95	1,191.06	-117.93	-35.94	-36.11	0.00	0.00	0.00
1,300.00	9.21	196.95	1,289.78	-133.24	-40.61	-40.79	0.00	0.00	0.00
1,400.00	9.21	196.95	1,388.49	-148.55	-45.27	-45.48	0.00	0.00	0.00
1,500.00	9.21	196.95	1,487.20	-163.86	-49.94	-50.17	0.00	0.00	0.00
1,600.00	9.21	196.95	1,585.91	-179.17	-54.61	-54.86	0.00	0.00	0.00
1,700.00	9.21	196.95	1,684.62	-194.48	-59.27	-59.54	0.00	0.00	0.00
1,766.24	9.21	196.95	1,750.00	-204.62	-62.36	-62.65	0.00	0.00	0.00
9 5/8"									
1,800.00	9.21	196.95	1,783.33	-209.79	-63.94	-64.23	0.00	0.00	0.00
1,900.00	9.21	196.95	1,882.04	-225.10	-68.60	-68.92	0.00	0.00	0.00
2,000.00	9.21	196.95	1,980.75	-240.41	-73.27	-73.61	0.00	0.00	0.00
2,100.00	9.21	196.95	2,079.46	-255.72	-77.94	-78.29	0.00	0.00	0.00
2,200.00	9.21	196.95	2,178.17	-271.03	-82.60	-82.98	0.00	0.00	0.00
2,300.00	9.21	196.95	2,276.88	-286.34	-87.27	-87.67	0.00	0.00	0.00
2,400.00	9.21	196.95	2,375.59	-301.65	-91.93	-92.36	0.00	0.00	0.00
2,500.00	9.21	196.95	2,474.31	-316.96	-96.60	-97.04	0.00	0.00	0.00
2,600.00	9.21	196.95	2,573.02	-332.27	-101.27	-101.73	0.00	0.00	0.00
2,700.00	9.21	196.95	2,671.73	-347.58	-105.93	-106.42	0.00	0.00	0.00
2,800.00	9.21	196.95	2,770.44	-362.89	-110.60	-111.11	0.00	0.00	0.00
2,900.00	9.21	196.95	2,869.15	-378.20	-115.27	-115.79	0.00	0.00	0.00
3,000.00	9.21	196.95	2,967.86	-393.51	-119.93	-120.48	0.00	0.00	0.00
3,100.00	9.21	196.95	3,066.57	-408.82	-124.60	-125.17	0.00	0.00	0.00
3,200.00	9.21	196.95	3,165.28	-424.13	-129.26	-129.86	0.00	0.00	0.00
3,300.00	9.21	196.95	3,263.99	-439.44	-133.93	-134.54	0.00	0.00	0.00
3,400.00	9.21	196.95	3,362.70	-454.75	-138.60	-139.23	0.00	0.00	0.00
3,500.00	9.21	196.95	3,461.41	-470.06	-143.26	-143.92	0.00	0.00	0.00
3,600.00	9.21	196.95	3,560.12	-485.37	-147.93	-148.61	0.00	0.00	0.00
3,700.00	9.21	196.95	3,658.84	-500.68	-152.59	-153.29	0.00	0.00	0.00
3,800.00	9.21	196.95	3,757.55	-515.99	-157.26	-157.98	0.00	0.00	0.00
3,900.00	9.21	196.95	3,856.26	-531.30	-161.93	-162.67	0.00	0.00	0.00
4,000.00	9.21	196.95	3,954.97	-546.61	-166.59	-167.36	0.00	0.00	0.00
4,100.00	9.21	196.95	4,053.68	-561.92	-171.26	-172.04	0.00	0.00	0.00
4,200.00	9.21	196.95	4,152.39	-577.23	-175.93	-176.73	0.00	0.00	0.00
4,300.00	9.21	196.95	4,251.10	-592.54	-180.59	-181.42	0.00	0.00	0.00
4,400.00	9.21	196.95	4,349.81	-607.85	-185.26	-186.11	0.00	0.00	0.00
4,500.00	9.21	196.95	4,448.52	-623.16	-189.92	-190.79	0.00	0.00	0.00
4,600.00	9.21	196.95	4,547.23	-638.47	-194.59	-195.48	0.00	0.00	0.00
4,700.00	9.21	196.95	4,645.94	-653.78	-199.26	-200.17	0.00	0.00	0.00

Database:	EDM 5000.14 Single User Db	Local Co-ordinate Reference:	Well Boomerang 28N-3A-L
Company:	Synergy Resources Corporation	TVD Reference:	GL 4770+KB 20 @ 4790.00ft
Project:	SEC 5-T5N-R66W	MD Reference:	GL 4770+KB 20 @ 4790.00ft
Site:	Boomerang 21-5	North Reference:	True
Well:	Boomerang 28N-3A-L	Survey Calculation Method:	Minimum Curvature
Wellbore:	OH		
Design:	Plan #1		

Planned Survey									
Measured Depth (ft)	Inclination (°)	Azimuth (°)	Vertical Depth (ft)	+N/-S (ft)	+E/-W (ft)	Vertical Section (ft)	Dogleg Rate (°/100ft)	Build Rate (°/100ft)	Turn Rate (°/100ft)
4,800.00	9.21	196.95	4,744.65	-669.09	-203.92	-204.86	0.00	0.00	0.00
4,900.00	9.21	196.95	4,843.37	-684.40	-208.59	-209.54	0.00	0.00	0.00
5,000.00	9.21	196.95	4,942.08	-699.71	-213.25	-214.23	0.00	0.00	0.00
5,100.00	9.21	196.95	5,040.79	-715.02	-217.92	-218.92	0.00	0.00	0.00
5,200.00	9.21	196.95	5,139.50	-730.33	-222.59	-223.61	0.00	0.00	0.00
5,300.00	9.21	196.95	5,238.21	-745.64	-227.25	-228.29	0.00	0.00	0.00
5,400.00	9.21	196.95	5,336.92	-760.95	-231.92	-232.98	0.00	0.00	0.00
5,500.00	9.21	196.95	5,435.63	-776.26	-236.59	-237.67	0.00	0.00	0.00
5,600.00	9.21	196.95	5,534.34	-791.57	-241.25	-242.36	0.00	0.00	0.00
5,700.00	9.21	196.95	5,633.05	-806.88	-245.92	-247.04	0.00	0.00	0.00
5,800.00	9.21	196.95	5,731.76	-822.19	-250.58	-251.73	0.00	0.00	0.00
5,900.00	9.21	196.95	5,830.47	-837.50	-255.25	-256.42	0.00	0.00	0.00
6,000.00	9.21	196.95	5,929.18	-852.81	-259.92	-261.11	0.00	0.00	0.00
6,100.00	9.21	196.95	6,027.90	-868.12	-264.58	-265.79	0.00	0.00	0.00
6,200.00	9.21	196.95	6,126.61	-883.43	-269.25	-270.48	0.00	0.00	0.00
6,300.00	9.21	196.95	6,225.32	-898.74	-273.91	-275.17	0.00	0.00	0.00
6,311.21	9.21	196.95	6,236.38	-900.45	-274.44	-275.69	0.00	0.00	0.00
Start DLS 9.00 TFO -106.84									
6,400.00	10.27	148.69	6,324.03	-914.04	-272.39	-273.67	9.00	1.20	-54.35
6,500.00	16.75	120.90	6,421.31	-929.09	-255.36	-256.66	9.00	6.48	-27.79
6,600.00	24.82	109.48	6,514.76	-943.52	-223.14	-224.46	9.00	8.07	-11.42
6,700.00	33.36	103.52	6,602.08	-956.98	-176.52	-177.86	9.00	8.53	-5.96
6,800.00	42.07	99.79	6,681.13	-969.13	-116.66	-118.01	9.00	8.71	-3.73
6,900.00	50.86	97.15	6,749.95	-979.67	-45.02	-46.39	9.00	8.80	-2.64
7,000.00	59.70	95.10	6,806.85	-988.35	36.63	35.25	9.00	8.84	-2.05
7,100.00	68.57	93.39	6,850.43	-994.95	126.27	124.88	9.00	8.87	-1.71
7,200.00	77.45	91.88	6,879.62	-999.31	221.71	220.32	9.00	8.88	-1.51
7,300.00	86.35	90.47	6,893.70	-1,001.32	320.59	319.19	9.00	8.89	-1.41
7,338.98	89.81	89.93	6,895.00	-1,001.46	359.55	358.15	9.00	8.89	-1.38
PLP_Boomerang 28N-3A-L(2577 FNL 2487 FEL)									
7,339.40	89.85	89.92	6,895.01	-1,001.46	359.97	358.57	9.00	8.89	-1.38
LP(2541 FNL 2487 FEL)									
7,400.00	89.85	89.92	6,895.16	-1,001.38	420.56	419.16	0.00	0.00	0.00
7,500.00	89.85	89.92	6,895.43	-1,001.25	520.56	519.16	0.00	0.00	0.00
7,600.00	89.85	89.92	6,895.69	-1,001.11	620.56	619.16	0.00	0.00	0.00
7,700.00	89.85	89.92	6,895.95	-1,000.98	720.56	719.16	0.00	0.00	0.00
7,800.00	89.85	89.92	6,896.21	-1,000.85	820.56	819.16	0.00	0.00	0.00
7,900.00	89.85	89.92	6,896.47	-1,000.72	920.56	919.16	0.00	0.00	0.00
8,000.00	89.85	89.92	6,896.74	-1,000.59	1,020.56	1,019.16	0.00	0.00	0.00
8,100.00	89.85	89.92	6,897.00	-1,000.45	1,120.56	1,119.16	0.00	0.00	0.00
8,200.00	89.85	89.92	6,897.26	-1,000.32	1,220.56	1,219.16	0.00	0.00	0.00
8,300.00	89.85	89.92	6,897.52	-1,000.19	1,320.56	1,319.16	0.00	0.00	0.00
8,400.00	89.85	89.92	6,897.78	-1,000.06	1,420.56	1,419.16	0.00	0.00	0.00
8,500.00	89.85	89.92	6,898.05	-999.93	1,520.56	1,519.16	0.00	0.00	0.00
8,600.00	89.85	89.92	6,898.31	-999.79	1,620.56	1,619.16	0.00	0.00	0.00
8,700.00	89.85	89.92	6,898.57	-999.66	1,720.56	1,719.16	0.00	0.00	0.00
8,800.00	89.85	89.92	6,898.83	-999.53	1,820.56	1,819.16	0.00	0.00	0.00
8,900.00	89.85	89.92	6,899.10	-999.40	1,920.56	1,919.16	0.00	0.00	0.00
9,000.00	89.85	89.92	6,899.36	-999.26	2,020.56	2,019.16	0.00	0.00	0.00
9,100.00	89.85	89.92	6,899.62	-999.13	2,120.56	2,119.16	0.00	0.00	0.00
9,200.00	89.85	89.92	6,899.88	-999.00	2,220.56	2,219.16	0.00	0.00	0.00
9,300.00	89.85	89.92	6,900.14	-998.87	2,320.56	2,319.16	0.00	0.00	0.00
9,400.00	89.85	89.92	6,900.41	-998.74	2,420.55	2,419.16	0.00	0.00	0.00

Database:	EDM 5000.14 Single User Db	Local Co-ordinate Reference:	Well Boomerang 28N-3A-L
Company:	Synergy Resources Corporation	TVD Reference:	GL 4770+KB 20 @ 4790.00ft
Project:	SEC 5-T5N-R66W	MD Reference:	GL 4770+KB 20 @ 4790.00ft
Site:	Boomerang 21-5	North Reference:	True
Well:	Boomerang 28N-3A-L	Survey Calculation Method:	Minimum Curvature
Wellbore:	OH		
Design:	Plan #1		

Planned Survey									
Measured Depth (ft)	Inclination (°)	Azimuth (°)	Vertical Depth (ft)	+N/-S (ft)	+E/-W (ft)	Vertical Section (ft)	Dogleg Rate (°/100ft)	Build Rate (°/100ft)	Turn Rate (°/100ft)
9,500.00	89.85	89.92	6,900.67	-998.60	2,520.55	2,519.16	0.00	0.00	0.00
9,600.00	89.85	89.92	6,900.93	-998.47	2,620.55	2,619.16	0.00	0.00	0.00
9,700.00	89.85	89.92	6,901.19	-998.34	2,720.55	2,719.16	0.00	0.00	0.00
9,800.00	89.85	89.92	6,901.45	-998.21	2,820.55	2,819.16	0.00	0.00	0.00
9,900.00	89.85	89.92	6,901.72	-998.08	2,920.55	2,919.16	0.00	0.00	0.00
10,000.00	89.85	89.92	6,901.98	-997.94	3,020.55	3,019.16	0.00	0.00	0.00
10,100.00	89.85	89.92	6,902.24	-997.81	3,120.55	3,119.16	0.00	0.00	0.00
10,200.00	89.85	89.92	6,902.50	-997.68	3,220.55	3,219.16	0.00	0.00	0.00
10,300.00	89.85	89.92	6,902.76	-997.55	3,320.55	3,319.16	0.00	0.00	0.00
10,400.00	89.85	89.92	6,903.03	-997.42	3,420.55	3,419.15	0.00	0.00	0.00
10,500.00	89.85	89.92	6,903.29	-997.28	3,520.55	3,519.15	0.00	0.00	0.00
10,600.00	89.85	89.92	6,903.55	-997.15	3,620.55	3,619.15	0.00	0.00	0.00
10,700.00	89.85	89.92	6,903.81	-997.02	3,720.55	3,719.15	0.00	0.00	0.00
10,800.00	89.85	89.92	6,904.08	-996.89	3,820.55	3,819.15	0.00	0.00	0.00
10,900.00	89.85	89.92	6,904.34	-996.76	3,920.55	3,919.15	0.00	0.00	0.00
11,000.00	89.85	89.92	6,904.60	-996.62	4,020.55	4,019.15	0.00	0.00	0.00
11,100.00	89.85	89.92	6,904.86	-996.49	4,120.55	4,119.15	0.00	0.00	0.00
11,200.00	89.85	89.92	6,905.12	-996.36	4,220.55	4,219.15	0.00	0.00	0.00
11,300.00	89.85	89.92	6,905.39	-996.23	4,320.55	4,319.15	0.00	0.00	0.00
11,400.00	89.85	89.92	6,905.65	-996.09	4,420.55	4,419.15	0.00	0.00	0.00
11,500.00	89.85	89.92	6,905.91	-995.96	4,520.55	4,519.15	0.00	0.00	0.00
11,600.00	89.85	89.92	6,906.17	-995.83	4,620.55	4,619.15	0.00	0.00	0.00
11,700.00	89.85	89.92	6,906.43	-995.70	4,720.55	4,719.15	0.00	0.00	0.00
11,800.00	89.85	89.92	6,906.70	-995.57	4,820.54	4,819.15	0.00	0.00	0.00
11,900.00	89.85	89.92	6,906.96	-995.43	4,920.54	4,919.15	0.00	0.00	0.00
12,000.00	89.85	89.92	6,907.22	-995.30	5,020.54	5,019.15	0.00	0.00	0.00
12,100.00	89.85	89.92	6,907.48	-995.17	5,120.54	5,119.15	0.00	0.00	0.00
12,200.00	89.85	89.92	6,907.74	-995.04	5,220.54	5,219.15	0.00	0.00	0.00
12,300.00	89.85	89.92	6,908.01	-994.91	5,320.54	5,319.15	0.00	0.00	0.00
12,400.00	89.85	89.92	6,908.27	-994.77	5,420.54	5,419.15	0.00	0.00	0.00
12,500.00	89.85	89.92	6,908.53	-994.64	5,520.54	5,519.15	0.00	0.00	0.00
12,600.00	89.85	89.92	6,908.79	-994.51	5,620.54	5,619.15	0.00	0.00	0.00
12,700.00	89.85	89.92	6,909.06	-994.38	5,720.54	5,719.15	0.00	0.00	0.00
12,800.00	89.85	89.92	6,909.32	-994.25	5,820.54	5,819.15	0.00	0.00	0.00
12,900.00	89.85	89.92	6,909.58	-994.11	5,920.54	5,919.15	0.00	0.00	0.00
13,000.00	89.85	89.92	6,909.84	-993.98	6,020.54	6,019.15	0.00	0.00	0.00
13,100.00	89.85	89.92	6,910.10	-993.85	6,120.54	6,119.15	0.00	0.00	0.00
13,200.00	89.85	89.92	6,910.37	-993.72	6,220.54	6,219.15	0.00	0.00	0.00
13,300.00	89.85	89.92	6,910.63	-993.59	6,320.54	6,319.14	0.00	0.00	0.00
13,400.00	89.85	89.92	6,910.89	-993.45	6,420.54	6,419.14	0.00	0.00	0.00
13,500.00	89.85	89.92	6,911.15	-993.32	6,520.54	6,519.14	0.00	0.00	0.00
13,600.00	89.85	89.92	6,911.41	-993.19	6,620.54	6,619.14	0.00	0.00	0.00
13,700.00	89.85	89.92	6,911.68	-993.06	6,720.54	6,719.14	0.00	0.00	0.00
13,800.00	89.85	89.92	6,911.94	-992.92	6,820.54	6,819.14	0.00	0.00	0.00
13,900.00	89.85	89.92	6,912.20	-992.79	6,920.54	6,919.14	0.00	0.00	0.00
14,000.00	89.85	89.92	6,912.46	-992.66	7,020.54	7,019.14	0.00	0.00	0.00
14,100.00	89.85	89.92	6,912.72	-992.53	7,120.53	7,119.14	0.00	0.00	0.00
14,200.00	89.85	89.92	6,912.99	-992.40	7,220.53	7,219.14	0.00	0.00	0.00
14,300.00	89.85	89.92	6,913.25	-992.26	7,320.53	7,319.14	0.00	0.00	0.00
14,400.00	89.85	89.92	6,913.51	-992.13	7,420.53	7,419.14	0.00	0.00	0.00
14,500.00	89.85	89.92	6,913.77	-992.00	7,520.53	7,519.14	0.00	0.00	0.00
14,600.00	89.85	89.92	6,914.04	-991.87	7,620.53	7,619.14	0.00	0.00	0.00
14,700.00	89.85	89.92	6,914.30	-991.74	7,720.53	7,719.14	0.00	0.00	0.00
14,800.00	89.85	89.92	6,914.56	-991.60	7,820.53	7,819.14	0.00	0.00	0.00

Database:	EDM 5000.14 Single User Db	Local Co-ordinate Reference:	Well Boomerang 28N-3A-L
Company:	Synergy Resources Corporation	TVD Reference:	GL 4770+KB 20 @ 4790.00ft
Project:	SEC 5-T5N-R66W	MD Reference:	GL 4770+KB 20 @ 4790.00ft
Site:	Boomerang 21-5	North Reference:	True
Well:	Boomerang 28N-3A-L	Survey Calculation Method:	Minimum Curvature
Wellbore:	OH		
Design:	Plan #1		

Planned Survey									
Measured Depth (ft)	Inclination (°)	Azimuth (°)	Vertical Depth (ft)	+N/-S (ft)	+E/-W (ft)	Vertical Section (ft)	Dogleg Rate (°/100ft)	Build Rate (°/100ft)	Turn Rate (°/100ft)
14,900.00	89.85	89.92	6,914.82	-991.47	7,920.53	7,919.14	0.00	0.00	0.00
15,000.00	89.85	89.92	6,915.08	-991.34	8,020.53	8,019.14	0.00	0.00	0.00
15,100.00	89.85	89.92	6,915.35	-991.21	8,120.53	8,119.14	0.00	0.00	0.00
15,200.00	89.85	89.92	6,915.61	-991.08	8,220.53	8,219.14	0.00	0.00	0.00
15,300.00	89.85	89.92	6,915.87	-990.94	8,320.53	8,319.14	0.00	0.00	0.00
15,400.00	89.85	89.92	6,916.13	-990.81	8,420.53	8,419.14	0.00	0.00	0.00
15,500.00	89.85	89.92	6,916.39	-990.68	8,520.53	8,519.14	0.00	0.00	0.00
15,600.00	89.85	89.92	6,916.66	-990.55	8,620.53	8,619.14	0.00	0.00	0.00
15,700.00	89.85	89.92	6,916.92	-990.42	8,720.53	8,719.14	0.00	0.00	0.00
15,800.00	89.85	89.92	6,917.18	-990.28	8,820.53	8,819.14	0.00	0.00	0.00
15,900.00	89.85	89.92	6,917.44	-990.15	8,920.53	8,919.14	0.00	0.00	0.00
16,000.00	89.85	89.92	6,917.70	-990.02	9,020.53	9,019.14	0.00	0.00	0.00
16,100.00	89.85	89.92	6,917.97	-989.89	9,120.53	9,119.14	0.00	0.00	0.00
16,200.00	89.85	89.92	6,918.23	-989.75	9,220.53	9,219.13	0.00	0.00	0.00
16,300.00	89.85	89.92	6,918.49	-989.62	9,320.53	9,319.13	0.00	0.00	0.00
16,400.00	89.85	89.92	6,918.75	-989.49	9,420.52	9,419.13	0.00	0.00	0.00
16,500.00	89.85	89.92	6,919.02	-989.36	9,520.52	9,519.13	0.00	0.00	0.00
16,600.00	89.85	89.92	6,919.28	-989.23	9,620.52	9,619.13	0.00	0.00	0.00
16,700.00	89.85	89.92	6,919.54	-989.09	9,720.52	9,719.13	0.00	0.00	0.00
16,800.00	89.85	89.92	6,919.80	-988.96	9,820.52	9,819.13	0.00	0.00	0.00
16,900.00	89.85	89.92	6,920.06	-988.83	9,920.52	9,919.13	0.00	0.00	0.00
17,000.00	89.85	89.92	6,920.33	-988.70	10,020.52	10,019.13	0.00	0.00	0.00
17,100.00	89.85	89.92	6,920.59	-988.57	10,120.52	10,119.13	0.00	0.00	0.00
17,200.00	89.85	89.92	6,920.85	-988.43	10,220.52	10,219.13	0.00	0.00	0.00
17,300.00	89.85	89.92	6,921.11	-988.30	10,320.52	10,319.13	0.00	0.00	0.00
17,400.00	89.85	89.92	6,921.37	-988.17	10,420.52	10,419.13	0.00	0.00	0.00
17,500.00	89.85	89.92	6,921.64	-988.04	10,520.52	10,519.13	0.00	0.00	0.00
17,600.00	89.85	89.92	6,921.90	-987.91	10,620.52	10,619.13	0.00	0.00	0.00
17,638.91	89.85	89.92	6,922.00	-987.85	10,659.43	10,658.04	0.00	0.00	0.00
TD at 17638.91 - PBHL_Boomerang 28N-3A-L(2593 FNL 2416 FWL)									

Design Targets									
Target Name	Dip Angle (°)	Dip Dir. (°)	TVD (ft)	+N/-S (ft)	+E/-W (ft)	Northing (ft)	Easting (ft)	Latitude	Longitude
PLP_Boomerang 28N-3, - hit/miss target - Shape - Point	0.00	0.00	6,895.00	-1,044.43	359.40	1,400,290.82	3,194,231.46	40.4300950	-104.8023120
- plan misses target center by 42.98ft at 7338.98ft MD (6895.00 TVD, -1001.46 N, 359.55 E)									
PBHL_Boomerang 28N- - plan hits target center - Point	0.00	0.00	6,922.00	-987.85	10,659.43	1,400,428.29	3,204,530.72	40.4302440	-104.7653130

Casing Points					
Measured Depth (ft)	Vertical Depth (ft)	Name	Casing Diameter (in)	Hole Diameter (in)	
1,766.24	1,750.00	9 5/8"	9.625	13.500	

Database:	EDM 5000.14 Single User Db	Local Co-ordinate Reference:	Well Boomerang 28N-3A-L
Company:	Synergy Resources Corporation	TVD Reference:	GL 4770+KB 20 @ 4790.00ft
Project:	SEC 5-T5N-R66W	MD Reference:	GL 4770+KB 20 @ 4790.00ft
Site:	Boomerang 21-5	North Reference:	True
Well:	Boomerang 28N-3A-L	Survey Calculation Method:	Minimum Curvature
Wellbore:	OH		
Design:	Plan #1		

Plan Annotations				
Measured Depth (ft)	Vertical Depth (ft)	Local Coordinates		Comment
		+N/-S (ft)	+E/-W (ft)	
200.00	200.00	0.00	0.00	Start Build 2.00
660.50	658.52	-35.33	-10.77	Start 5650.71 hold at 660.50 MD
6,311.21	6,236.38	-900.45	-274.44	Start DLS 9.00 TFO -106.84
7,339.40	6,895.01	-1,001.46	359.97	LP(2541 FNL 2487 FEL)
17,638.91	6,922.00	-987.85	10,659.43	TD at 17638.91