



October 25, 2017

Mr. Matt Lepore, Director
Colorado Oil and Gas Conservation Commission
1120 Lincoln Street, Suite 801
Denver, CO 80203

RE: COGCC Rule 318A.e.: Proposed Wellbore Spacing Unit

Boomerang 25N-3A-L

6N-66W Section 32: S/2SE/4, SE/4SW/4; Section 33: S/2S/2; Section 34: S/2SW/4, SW/4SE/4
5N-66W Section 3: N/2NW/4, NW/4NE/4; Section 4: N/2N/2; Section 5: N/2NE/4, NE/4NW/4
848.2742 acres

Dear Mr. Lepore,

SRC Energy Inc. ("SRC Energy") is planning to drill the above referenced well in accordance with the provisions set out in COGCC Rule 318A.e. SRC Energy's proposed wellbore spacing unit consists of:

Boomerang 25N-3A-L

6N-66W Section 32: S/2SE/4, SE/4SW/4; Section 33: S/2S/2; Section 34: S/2SW/4, SW/4SE/4
5N-66W Section 3: N/2NW/4, NW/4NE/4; Section 4: N/2N/2; Section 5: N/2NE/4, NE/4NW/4
848.2742 acres

SRC Energy is not the only owner within the proposed wellbore spacing unit and hereby certifies to the Director that a thirty day (30-day) notice has been given by certified mail to all owners in the proposed wellbore spacing unit, as required by COGCC Rule 318A.e. (5). Copies of the required notification letters are on file at SRC Energy's office. The required thirty (30) day notice period has elapsed absent the receipt by SRC Energy of any objection to their proposal by the owner(s) within the proposed spacing unit for the subject well. We have not received any objections to such well location or proposed spacing unit, therefore, SRC Energy hereby requests the Director approve the well.

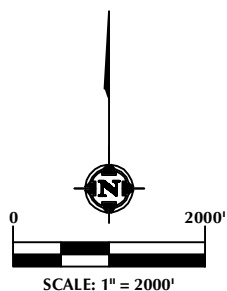
Enclosed is the Proposed Spacing Unit Plat to assist in your review and approval of SRC Energy's proposed Application for Permit to Drill (APD) for Boomerang 25N-3A-L well. SRC Energy respectfully requests the COGCC to review the enclosed information and approve the exception location waiver request per Surface Use Agreement and APD for Boomerang 25N-3A-L.

Thank you,
Erin Ekblad
Erin Ekblad
Manager of Regulatory Affairs
SRC Energy Inc.

Attachment: Proposed Spacing Unit Plat

DISTANCE FROM COMPLETED
PORTION OF WELLBORE TO
NEAREST UNIT BOUNDARY= 1144'

BOOMERANG 25N-3A-L WELLBORE SPACING UNIT

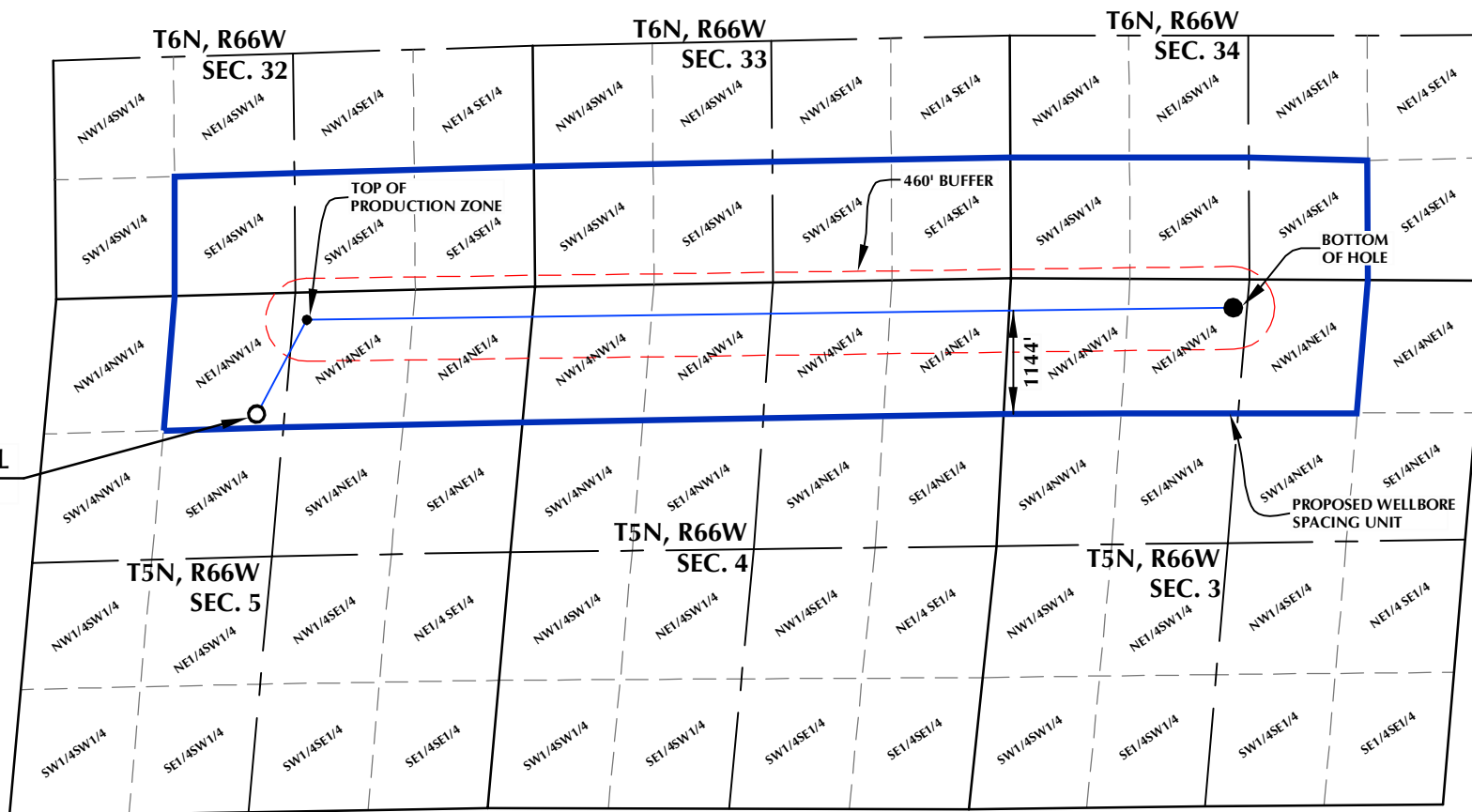


BOOMERANG 25N-3A-L SURFACE LOCATION

SURFACE LOCATION
GROUND ELEVATION= 4769.6'
LATITUDE= 40.433495°
LONGITUDE= -104.803535°
1/4 1/4: NE1/4 NW1/4

TOP OF PRODUCTION
LATITUDE= 40.436358°
LONGITUDE= -104.801501°
1/4 1/4: NW1/4 NE1/4

BOTTOM HOLE LOCATION
LATITUDE= 40.436492°
LONGITUDE= -104.764573°
1/4 1/4: NE1/4 NW1/4



WELL PAD - BOOMERANG 21-5 PAD

BOOMERANG 25N-3A-L
WELLBORE SPACING UNIT
1332' FNL & 2327' FWL, LOT 2 (NENW) (SURFACE)
300' FNL & 2487' FEL, LOT 2 (NWNE) (TOP OF PRODUCTION)
LOCATED IN SECTION 5
314' FNL & 2481' FWL, LOT 2 (NENW) (BOTTOM)
LOCATED IN SECTION 3
T5N, R66W, 6TH P.M.
WELD COUNTY, COLORADO



SRC ENERGY
1625 Broadway, Suite 300
Denver, Colorado 80202



CONSULTING, LLC

SHERIDAN OFFICE
1095 Saberton Avenue
Sheridan, Wyoming 82801
Phone 307-674-0609

LOVELAND OFFICE
1635 Foxtrail Drive, Suite 204
Loveland, Colorado 80538
Phone 970-776-4331

DRAFTED BY:	LMO	CHECKED BY:	JRS
DATE DRAFTED:	3/6/17	DATE SURVEYED:	3/1/17
REVISED:		FILE NAME:	16-121

NOTES:

1. DRAWING LATITUDE AND LONGITUDE COORDINATES ARE NAD 83 (2011)(EPOCH:2010)
2. ELEVATION BASED ON NAVD88 (GEOID12B)
3. BASIS OF BEARING DERIVED FROM COLORADO COORDINATE SYSTEM OF 1983 NORTH ZONE.
4. ALL MEASURED DISTANCES ARE GRID.
COMBINED SCALE FACTOR: .99973538 CALCULATED FROM THE W. 1/4 CORNER OF SECTION 5, T5N, R66W