



Project: SEC 5-T5N-R66W  
Site: Boomerang 21-5  
Well: Boomerang 25N-3A-L  
Wellbore: OH  
Design: Plan #1

SECTION DETAILS									
MD	Inc	Azi	TVD	+N/-S	+E/-W	Dleg	TFace	VSect	Target
0.00	0.00	0.00	0.00	0.00	0.00	0.00	0.00	0.00	
300.00	0.00	0.00	300.00	0.00	0.00	0.00	0.00	0.00	
775.00	9.50	356.04	772.83	39.20	-2.71	2.00	356.04	-2.55	
6272.77	9.50	356.04	6195.20	944.42	-65.38	0.00	0.00	-61.42	
7273.12	89.41	89.76	6830.00	1051.92	564.29	9.00	93.77	568.69	
17553.57	89.41	89.76	6936.00	1094.21	10844.11	0.00	0.00	10848.60	PBHL

PROJECT DETAILS: SEC 5-T5N-R66W  
Geodetic System: US State Plane 1983  
Datum: North American Datum 1983  
Ellipsoid: GRS 1980  
Zone: Colorado Northern Zone  
Colorado Northern Zone  
System Datum: Mean Sea Level

DESIGN TARGET DETAILS

Name	TVD	+N/-S	+E/-W	Northing	Easting	Latitude	Longitude	Shape
PLP	6830.00	1043.01	564.80	1402574.14	3194439.25	40.4363580	-104.8015010	Point
- plan misses target center by 8.91ft at 7273.59ft MD (6830.01 TVD, 1051.92 N, 564.76 E)								
PBHL	6936.00	1094.21	10844.11	1402706.07	3204717.84	40.4364920	-104.7645730	Point
- plan hits target center								

CASING DETAILS

TVD	MD	Name	Size
1750.00	1765.76	9 5/8"	9.625

T

M

Azimuths to True North

Magnetic North: 8.26°

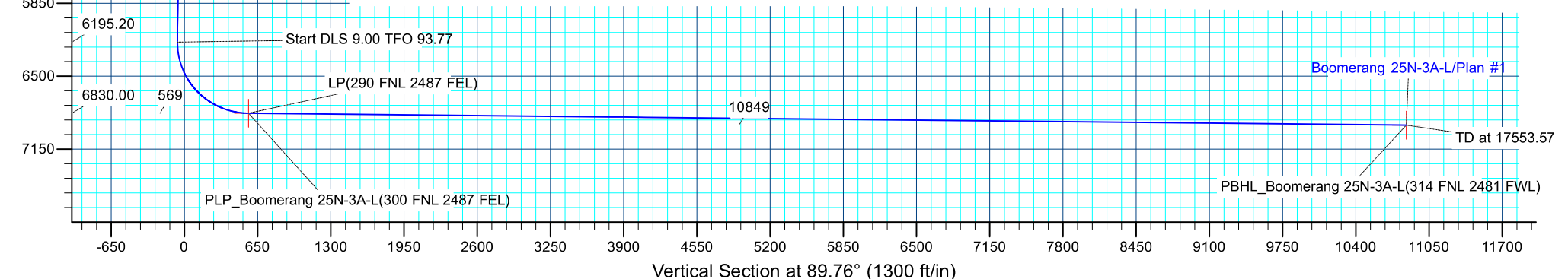
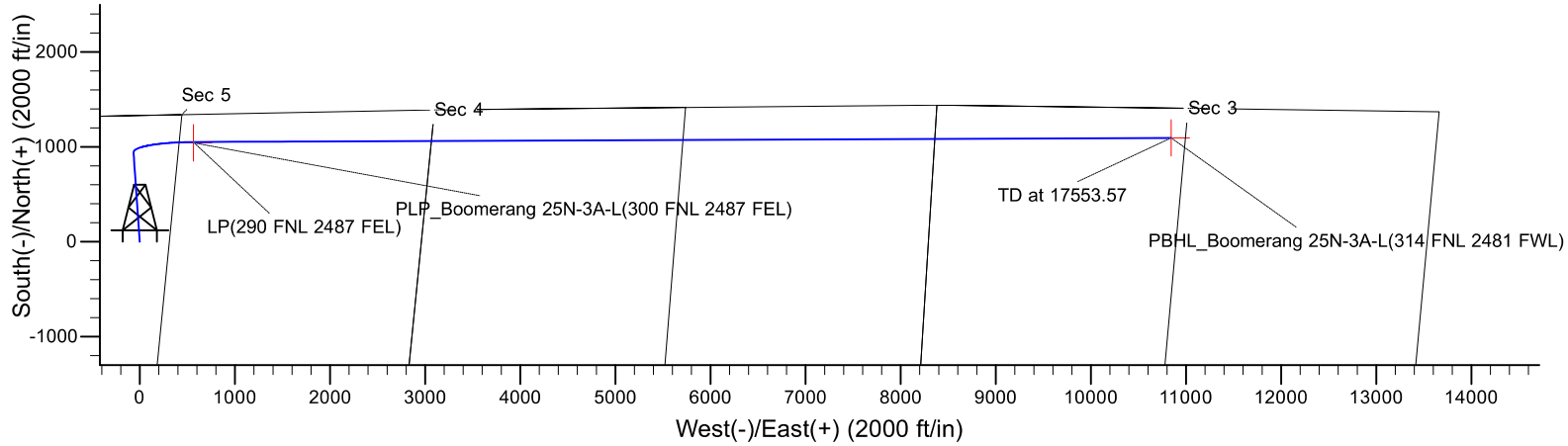
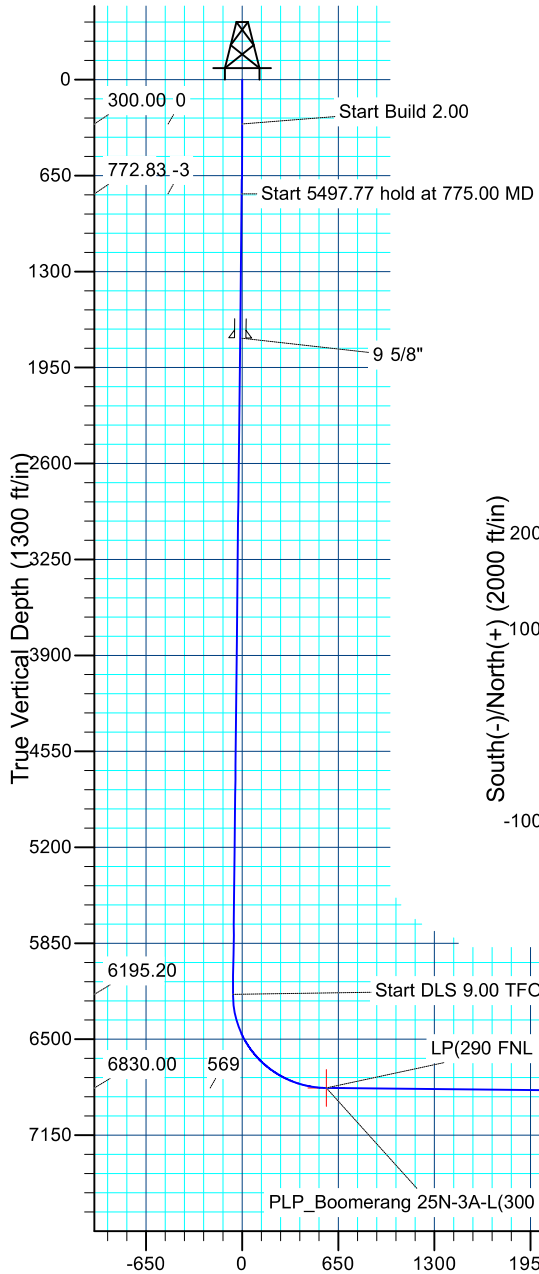
Magnetic Field

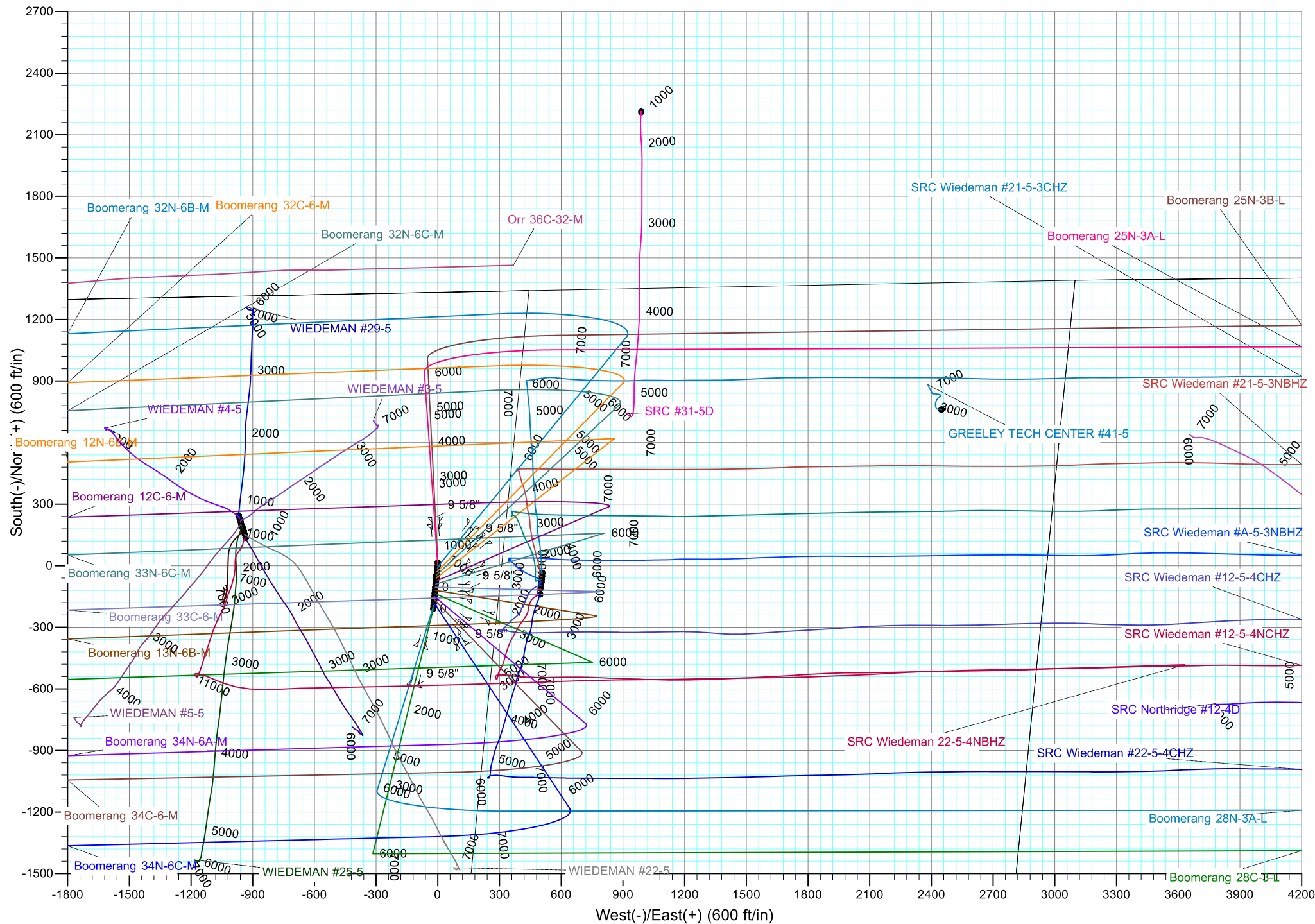
Strength: 52430.1snT

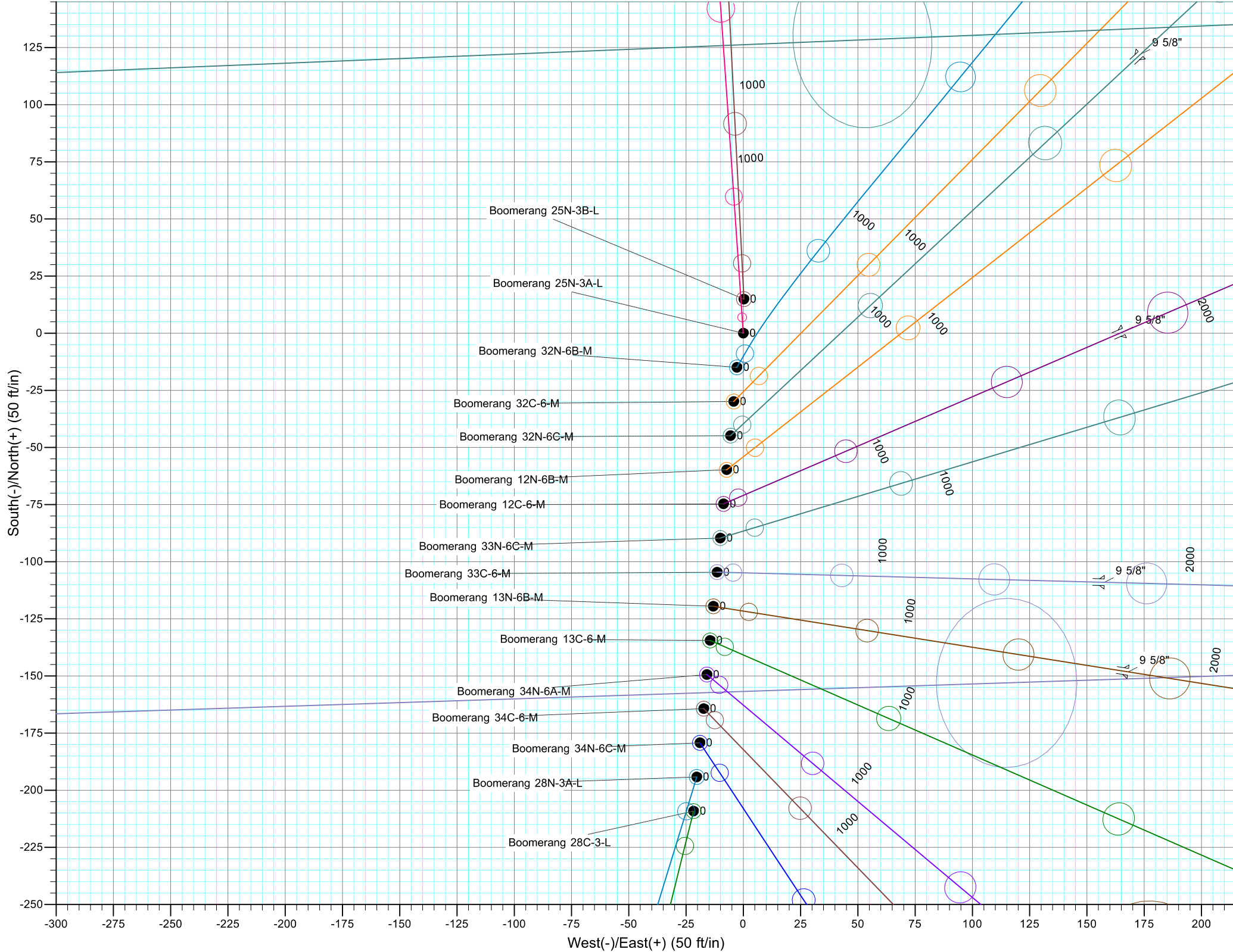
Dip Angle: 66.88°

Date: 4/1/2017

Model: IGRF2015









# **Synergy Resources Corporation**

**SEC 5-T5N-R66W**

**Boomerang 21-5**

**Boomerang 25N-3A-L**

**OH**

**Plan: Plan #1**

## **Standard Planning Report**

**05 April, 2017**

<b>Database:</b>	EDM 5000.14 Single User Db	<b>Local Co-ordinate Reference:</b>	Well Boomerang 25N-3A-L
<b>Company:</b>	Synergy Resources Corporation	<b>TVD Reference:</b>	GL 4770+KB 20 @ 4790.00ft
<b>Project:</b>	SEC 5-T5N-R66W	<b>MD Reference:</b>	GL 4770+KB 20 @ 4790.00ft
<b>Site:</b>	Boomerang 21-5	<b>North Reference:</b>	True
<b>Well:</b>	Boomerang 25N-3A-L	<b>Survey Calculation Method:</b>	Minimum Curvature
<b>Wellbore:</b>	OH		
<b>Design:</b>	Plan #1		

<b>Project</b>	SEC 5-T5N-R66W		
<b>Map System:</b>	US State Plane 1983	<b>System Datum:</b>	Mean Sea Level
<b>Geo Datum:</b>	North American Datum 1983		
<b>Map Zone:</b>	Colorado Northern Zone		

Site	Boomerang 21-5				
Site Position:		Northing:	1,401,541.68 ft	Latitude:	40.4335360
From:	Lat/Long	Easting:	3,193,882.83 ft	Longitude:	-104.8035290
Position Uncertainty:	3.28 ft	Slot Radius:	13.200 in	Grid Convergence:	0.45 °

Well	Boomerang 25N-3A-L, 1332 FNL 2327 FWL					
Well Position	+N/-S	-14.95 ft	Northing:	1,401,526.72 ft	Latitude:	40.4334950
	+E/-W	-0.28 ft	Easting:	3,193,882.67 ft	Longitude:	-104.8035300
Position Uncertainty		3.28 ft	Wellhead Elevation:		Ground Level:	4,770.00 ft

<b>Wellbore</b>	OH				
<b>Magnetics</b>	<b>Model Name</b>	<b>Sample Date</b>	<b>Declination (°)</b>	<b>Dip Angle (°)</b>	<b>Field Strength (nT)</b>
	IGRF2015	4/1/2017	8.26	66.88	52,430

<b>Design</b>	Plan #1			
<b>Audit Notes:</b>				
<b>Version:</b>	<b>Phase:</b>	PLAN	<b>Tie On Depth:</b>	0.00
<b>Vertical Section:</b>	<b>Depth From (TVD) (ft)</b>	<b>+N/-S (ft)</b>	<b>+E/-W (ft)</b>	<b>Direction (°)</b>
	0.00	0.00	0.00	89.76

<b>Plan Survey Tool Program</b>	<b>Date</b>	4/5/2017		
<b>Depth From (ft)</b>	<b>Depth To (ft)</b>	<b>Survey (Wellbore)</b>	<b>Tool Name</b>	<b>Remarks</b>
1	0.00	17,553.57 Plan #1 (OH)	MWD+IFR1	
			OWSG MWD + IFR1	

<b>Plan Sections</b>										
<b>Measured Depth (ft)</b>	<b>Inclination (°)</b>	<b>Azimuth (°)</b>	<b>Vertical Depth (ft)</b>	<b>+N/-S (ft)</b>	<b>+E/-W (ft)</b>	<b>Dogleg Rate (°/100ft)</b>	<b>Build Rate (°/100ft)</b>	<b>Turn Rate (°/100ft)</b>	<b>TFO (°)</b>	<b>Target</b>
0.00	0.00	0.00	0.00	0.00	0.00	0.00	0.00	0.00	0.00	
300.00	0.00	0.00	300.00	0.00	0.00	0.00	0.00	0.00	0.00	
775.00	9.50	356.04	772.83	39.20	-2.71	2.00	2.00	0.00	356.04	
6,272.77	9.50	356.04	6,195.20	944.42	-65.38	0.00	0.00	0.00	0.00	
7,273.12	89.41	89.76	6,830.00	1,051.92	564.29	9.00	7.99	9.37	93.77	
17,553.57	89.41	89.76	6,936.00	1,094.21	10,844.11	0.00	0.00	0.00	0.00	PBHL_Boomerang 25

<b>Database:</b>	EDM 5000.14 Single User Db	<b>Local Co-ordinate Reference:</b>	Well Boomerang 25N-3A-L
<b>Company:</b>	Synergy Resources Corporation	<b>TVD Reference:</b>	GL 4770+KB 20 @ 4790.00ft
<b>Project:</b>	SEC 5-T5N-R66W	<b>MD Reference:</b>	GL 4770+KB 20 @ 4790.00ft
<b>Site:</b>	Boomerang 21-5	<b>North Reference:</b>	True
<b>Well:</b>	Boomerang 25N-3A-L	<b>Survey Calculation Method:</b>	Minimum Curvature
<b>Wellbore:</b>	OH		
<b>Design:</b>	Plan #1		

Planned Survey									
Measured Depth (ft)	Inclination (°)	Azimuth (°)	Vertical Depth (ft)	+N/-S (ft)	+E/-W (ft)	Vertical Section (ft)	Dogleg Rate (°/100ft)	Build Rate (°/100ft)	Turn Rate (°/100ft)
0.00	0.00	0.00	0.00	0.00	0.00	0.00	0.00	0.00	0.00
100.00	0.00	0.00	100.00	0.00	0.00	0.00	0.00	0.00	0.00
200.00	0.00	0.00	200.00	0.00	0.00	0.00	0.00	0.00	0.00
300.00	0.00	0.00	300.00	0.00	0.00	0.00	0.00	0.00	0.00
Start Build 2.00									
400.00	2.00	356.04	399.98	1.74	-0.12	-0.11	2.00	2.00	0.00
500.00	4.00	356.04	499.84	6.96	-0.48	-0.45	2.00	2.00	0.00
600.00	6.00	356.04	599.45	15.66	-1.08	-1.02	2.00	2.00	0.00
700.00	8.00	356.04	698.70	27.81	-1.93	-1.81	2.00	2.00	0.00
775.00	9.50	356.04	772.83	39.20	-2.71	-2.55	2.00	2.00	0.00
Start 5497.77 hold at 775.00 MD									
800.00	9.50	356.04	797.48	43.31	-3.00	-2.82	0.00	0.00	0.00
900.00	9.50	356.04	896.11	59.78	-4.14	-3.89	0.00	0.00	0.00
1,000.00	9.50	356.04	994.74	76.24	-5.28	-4.96	0.00	0.00	0.00
1,100.00	9.50	356.04	1,093.37	92.71	-6.42	-6.03	0.00	0.00	0.00
1,200.00	9.50	356.04	1,192.00	109.17	-7.56	-7.10	0.00	0.00	0.00
1,300.00	9.50	356.04	1,290.63	125.64	-8.70	-8.17	0.00	0.00	0.00
1,400.00	9.50	356.04	1,389.26	142.10	-9.84	-9.24	0.00	0.00	0.00
1,500.00	9.50	356.04	1,487.88	158.57	-10.98	-10.31	0.00	0.00	0.00
1,600.00	9.50	356.04	1,586.51	175.03	-12.12	-11.38	0.00	0.00	0.00
1,700.00	9.50	356.04	1,685.14	191.50	-13.26	-12.45	0.00	0.00	0.00
1,765.76	9.50	356.04	1,750.00	202.33	-14.01	-13.16	0.00	0.00	0.00
9 5/8"									
1,800.00	9.50	356.04	1,783.77	207.96	-14.40	-13.53	0.00	0.00	0.00
1,900.00	9.50	356.04	1,882.40	224.43	-15.54	-14.60	0.00	0.00	0.00
2,000.00	9.50	356.04	1,981.03	240.90	-16.68	-15.67	0.00	0.00	0.00
2,100.00	9.50	356.04	2,079.66	257.36	-17.82	-16.74	0.00	0.00	0.00
2,200.00	9.50	356.04	2,178.28	273.83	-18.96	-17.81	0.00	0.00	0.00
2,300.00	9.50	356.04	2,276.91	290.29	-20.10	-18.88	0.00	0.00	0.00
2,400.00	9.50	356.04	2,375.54	306.76	-21.24	-19.95	0.00	0.00	0.00
2,500.00	9.50	356.04	2,474.17	323.22	-22.38	-21.02	0.00	0.00	0.00
2,600.00	9.50	356.04	2,572.80	339.69	-23.51	-22.09	0.00	0.00	0.00
2,700.00	9.50	356.04	2,671.43	356.15	-24.65	-23.16	0.00	0.00	0.00
2,800.00	9.50	356.04	2,770.05	372.62	-25.79	-24.23	0.00	0.00	0.00
2,900.00	9.50	356.04	2,868.68	389.08	-26.93	-25.30	0.00	0.00	0.00
3,000.00	9.50	356.04	2,967.31	405.55	-28.07	-26.38	0.00	0.00	0.00
3,100.00	9.50	356.04	3,065.94	422.01	-29.21	-27.45	0.00	0.00	0.00
3,200.00	9.50	356.04	3,164.57	438.48	-30.35	-28.52	0.00	0.00	0.00
3,300.00	9.50	356.04	3,263.20	454.95	-31.49	-29.59	0.00	0.00	0.00
3,400.00	9.50	356.04	3,361.83	471.41	-32.63	-30.66	0.00	0.00	0.00
3,500.00	9.50	356.04	3,460.45	487.88	-33.77	-31.73	0.00	0.00	0.00
3,600.00	9.50	356.04	3,559.08	504.34	-34.91	-32.80	0.00	0.00	0.00
3,700.00	9.50	356.04	3,657.71	520.81	-36.05	-33.87	0.00	0.00	0.00
3,800.00	9.50	356.04	3,756.34	537.27	-37.19	-34.94	0.00	0.00	0.00
3,900.00	9.50	356.04	3,854.97	553.74	-38.33	-36.01	0.00	0.00	0.00
4,000.00	9.50	356.04	3,953.60	570.20	-39.47	-37.08	0.00	0.00	0.00
4,100.00	9.50	356.04	4,052.23	586.67	-40.61	-38.15	0.00	0.00	0.00
4,200.00	9.50	356.04	4,150.85	603.13	-41.75	-39.23	0.00	0.00	0.00
4,300.00	9.50	356.04	4,249.48	619.60	-42.89	-40.30	0.00	0.00	0.00
4,400.00	9.50	356.04	4,348.11	636.06	-44.03	-41.37	0.00	0.00	0.00
4,500.00	9.50	356.04	4,446.74	652.53	-45.17	-42.44	0.00	0.00	0.00
4,600.00	9.50	356.04	4,545.37	668.99	-46.31	-43.51	0.00	0.00	0.00
4,700.00	9.50	356.04	4,644.00	685.46	-47.45	-44.58	0.00	0.00	0.00

<b>Database:</b>	EDM 5000.14 Single User Db	<b>Local Co-ordinate Reference:</b>	Well Boomerang 25N-3A-L
<b>Company:</b>	Synergy Resources Corporation	<b>TVD Reference:</b>	GL 4770+KB 20 @ 4790.00ft
<b>Project:</b>	SEC 5-T5N-R66W	<b>MD Reference:</b>	GL 4770+KB 20 @ 4790.00ft
<b>Site:</b>	Boomerang 21-5	<b>North Reference:</b>	True
<b>Well:</b>	Boomerang 25N-3A-L	<b>Survey Calculation Method:</b>	Minimum Curvature
<b>Wellbore:</b>	OH		
<b>Design:</b>	Plan #1		

Planned Survey									
Measured Depth (ft)	Inclination (°)	Azimuth (°)	Vertical Depth (ft)	+N/-S (ft)	+E/-W (ft)	Vertical Section (ft)	Dogleg Rate (°/100ft)	Build Rate (°/100ft)	Turn Rate (°/100ft)
4,800.00	9.50	356.04	4,742.63	701.93	-48.59	-45.65	0.00	0.00	0.00
4,900.00	9.50	356.04	4,841.25	718.39	-49.73	-46.72	0.00	0.00	0.00
5,000.00	9.50	356.04	4,939.88	734.86	-50.87	-47.79	0.00	0.00	0.00
5,100.00	9.50	356.04	5,038.51	751.32	-52.01	-48.86	0.00	0.00	0.00
5,200.00	9.50	356.04	5,137.14	767.79	-53.15	-49.93	0.00	0.00	0.00
5,300.00	9.50	356.04	5,235.77	784.25	-54.29	-51.00	0.00	0.00	0.00
5,400.00	9.50	356.04	5,334.40	800.72	-55.43	-52.08	0.00	0.00	0.00
5,500.00	9.50	356.04	5,433.03	817.18	-56.57	-53.15	0.00	0.00	0.00
5,600.00	9.50	356.04	5,531.65	833.65	-57.71	-54.22	0.00	0.00	0.00
5,700.00	9.50	356.04	5,630.28	850.11	-58.85	-55.29	0.00	0.00	0.00
5,800.00	9.50	356.04	5,728.91	866.58	-59.99	-56.36	0.00	0.00	0.00
5,900.00	9.50	356.04	5,827.54	883.04	-61.13	-57.43	0.00	0.00	0.00
6,000.00	9.50	356.04	5,926.17	899.51	-62.27	-58.50	0.00	0.00	0.00
6,100.00	9.50	356.04	6,024.80	915.98	-63.41	-59.57	0.00	0.00	0.00
6,200.00	9.50	356.04	6,123.43	932.44	-64.55	-60.64	0.00	0.00	0.00
6,272.77	9.50	356.04	6,195.20	944.42	-65.38	-61.42	0.00	0.00	0.00
Start DLS 9.00 TFO 93.77									
6,300.00	9.65	10.78	6,222.05	948.91	-65.11	-61.13	9.00	0.55	54.15
6,400.00	14.35	49.11	6,319.99	965.29	-54.15	-50.10	9.00	4.70	38.33
6,500.00	21.89	65.31	6,415.02	981.22	-27.79	-23.68	9.00	7.54	16.19
6,600.00	30.21	73.20	6,504.81	996.31	13.31	17.49	9.00	8.32	7.89
6,700.00	38.82	77.88	6,587.14	1,010.19	68.15	72.39	9.00	8.61	4.69
6,800.00	47.55	81.08	6,660.00	1,022.51	135.38	139.66	9.00	8.73	3.19
6,900.00	56.35	83.48	6,721.58	1,032.98	213.34	217.67	9.00	8.80	2.40
7,000.00	65.19	85.44	6,770.37	1,041.33	300.11	304.47	9.00	8.84	1.95
7,100.00	74.05	87.13	6,805.17	1,047.37	393.56	397.94	9.00	8.86	1.69
7,200.00	82.92	88.67	6,825.11	1,050.93	491.38	495.78	9.00	8.87	1.55
7,273.12	89.41	89.76	6,830.00	1,051.92	564.29	568.69	9.00	8.88	1.49
LP(290 FNL 2487 FEL)									
7,273.59	89.41	89.76	6,830.01	1,051.92	564.76	569.16	0.00	0.00	0.00
PLP_Boomerang 25N-3A-L(300 FNL 2487 FEL)									
7,300.00	89.41	89.76	6,830.28	1,052.03	591.17	595.57	0.00	0.00	0.00
7,400.00	89.41	89.76	6,831.31	1,052.44	691.16	695.56	0.00	0.00	0.00
7,500.00	89.41	89.76	6,832.34	1,052.86	791.16	795.56	0.00	0.00	0.00
7,600.00	89.41	89.76	6,833.37	1,053.27	891.15	895.55	0.00	0.00	0.00
7,700.00	89.41	89.76	6,834.40	1,053.68	991.14	995.55	0.00	0.00	0.00
7,800.00	89.41	89.76	6,835.44	1,054.09	1,091.14	1,095.54	0.00	0.00	0.00
7,900.00	89.41	89.76	6,836.47	1,054.50	1,191.13	1,195.54	0.00	0.00	0.00
8,000.00	89.41	89.76	6,837.50	1,054.91	1,291.13	1,295.53	0.00	0.00	0.00
8,100.00	89.41	89.76	6,838.53	1,055.32	1,391.12	1,395.53	0.00	0.00	0.00
8,200.00	89.41	89.76	6,839.56	1,055.73	1,491.11	1,495.52	0.00	0.00	0.00
8,300.00	89.41	89.76	6,840.59	1,056.15	1,591.11	1,595.52	0.00	0.00	0.00
8,400.00	89.41	89.76	6,841.62	1,056.56	1,691.10	1,695.51	0.00	0.00	0.00
8,500.00	89.41	89.76	6,842.65	1,056.97	1,791.09	1,795.51	0.00	0.00	0.00
8,600.00	89.41	89.76	6,843.68	1,057.38	1,891.09	1,895.50	0.00	0.00	0.00
8,700.00	89.41	89.76	6,844.71	1,057.79	1,991.08	1,995.50	0.00	0.00	0.00
8,800.00	89.41	89.76	6,845.75	1,058.20	2,091.08	2,095.49	0.00	0.00	0.00
8,900.00	89.41	89.76	6,846.78	1,058.61	2,191.07	2,195.49	0.00	0.00	0.00
9,000.00	89.41	89.76	6,847.81	1,059.03	2,291.06	2,295.48	0.00	0.00	0.00
9,100.00	89.41	89.76	6,848.84	1,059.44	2,391.06	2,395.47	0.00	0.00	0.00
9,200.00	89.41	89.76	6,849.87	1,059.85	2,491.05	2,495.47	0.00	0.00	0.00
9,300.00	89.41	89.76	6,850.90	1,060.26	2,591.05	2,595.46	0.00	0.00	0.00
9,400.00	89.41	89.76	6,851.93	1,060.67	2,691.04	2,695.46	0.00	0.00	0.00

<b>Database:</b>	EDM 5000.14 Single User Db	<b>Local Co-ordinate Reference:</b>	Well Boomerang 25N-3A-L
<b>Company:</b>	Synergy Resources Corporation	<b>TVD Reference:</b>	GL 4770+KB 20 @ 4790.00ft
<b>Project:</b>	SEC 5-T5N-R66W	<b>MD Reference:</b>	GL 4770+KB 20 @ 4790.00ft
<b>Site:</b>	Boomerang 21-5	<b>North Reference:</b>	True
<b>Well:</b>	Boomerang 25N-3A-L	<b>Survey Calculation Method:</b>	Minimum Curvature
<b>Wellbore:</b>	OH		
<b>Design:</b>	Plan #1		

Planned Survey									
Measured Depth (ft)	Inclination (°)	Azimuth (°)	Vertical Depth (ft)	+N/-S (ft)	+E/-W (ft)	Vertical Section (ft)	Dogleg Rate (°/100ft)	Build Rate (°/100ft)	Turn Rate (°/100ft)
9,500.00	89.41	89.76	6,852.96	1,061.08	2,791.03	2,795.45	0.00	0.00	0.00
9,600.00	89.41	89.76	6,853.99	1,061.49	2,891.03	2,895.45	0.00	0.00	0.00
9,700.00	89.41	89.76	6,855.03	1,061.90	2,991.02	2,995.44	0.00	0.00	0.00
9,800.00	89.41	89.76	6,856.06	1,062.32	3,091.01	3,095.44	0.00	0.00	0.00
9,900.00	89.41	89.76	6,857.09	1,062.73	3,191.01	3,195.43	0.00	0.00	0.00
10,000.00	89.41	89.76	6,858.12	1,063.14	3,291.00	3,295.43	0.00	0.00	0.00
10,100.00	89.41	89.76	6,859.15	1,063.55	3,391.00	3,395.42	0.00	0.00	0.00
10,200.00	89.41	89.76	6,860.18	1,063.96	3,490.99	3,495.42	0.00	0.00	0.00
10,300.00	89.41	89.76	6,861.21	1,064.37	3,590.98	3,595.41	0.00	0.00	0.00
10,400.00	89.41	89.76	6,862.24	1,064.78	3,690.98	3,695.41	0.00	0.00	0.00
10,500.00	89.41	89.76	6,863.27	1,065.19	3,790.97	3,795.40	0.00	0.00	0.00
10,600.00	89.41	89.76	6,864.30	1,065.61	3,890.97	3,895.39	0.00	0.00	0.00
10,700.00	89.41	89.76	6,865.34	1,066.02	3,990.96	3,995.39	0.00	0.00	0.00
10,800.00	89.41	89.76	6,866.37	1,066.43	4,090.95	4,095.38	0.00	0.00	0.00
10,900.00	89.41	89.76	6,867.40	1,066.84	4,190.95	4,195.38	0.00	0.00	0.00
11,000.00	89.41	89.76	6,868.43	1,067.25	4,290.94	4,295.37	0.00	0.00	0.00
11,100.00	89.41	89.76	6,869.46	1,067.66	4,390.93	4,395.37	0.00	0.00	0.00
11,200.00	89.41	89.76	6,870.49	1,068.07	4,490.93	4,495.36	0.00	0.00	0.00
11,300.00	89.41	89.76	6,871.52	1,068.49	4,590.92	4,595.36	0.00	0.00	0.00
11,400.00	89.41	89.76	6,872.55	1,068.90	4,690.92	4,695.35	0.00	0.00	0.00
11,500.00	89.41	89.76	6,873.58	1,069.31	4,790.91	4,795.35	0.00	0.00	0.00
11,600.00	89.41	89.76	6,874.62	1,069.72	4,890.90	4,895.34	0.00	0.00	0.00
11,700.00	89.41	89.76	6,875.65	1,070.13	4,990.90	4,995.34	0.00	0.00	0.00
11,800.00	89.41	89.76	6,876.68	1,070.54	5,090.89	5,095.33	0.00	0.00	0.00
11,900.00	89.41	89.76	6,877.71	1,070.95	5,190.89	5,195.33	0.00	0.00	0.00
12,000.00	89.41	89.76	6,878.74	1,071.36	5,290.88	5,295.32	0.00	0.00	0.00
12,100.00	89.41	89.76	6,879.77	1,071.78	5,390.87	5,395.32	0.00	0.00	0.00
12,200.00	89.41	89.76	6,880.80	1,072.19	5,490.87	5,495.31	0.00	0.00	0.00
12,300.00	89.41	89.76	6,881.83	1,072.60	5,590.86	5,595.30	0.00	0.00	0.00
12,400.00	89.41	89.76	6,882.86	1,073.01	5,690.85	5,695.30	0.00	0.00	0.00
12,500.00	89.41	89.76	6,883.89	1,073.42	5,790.85	5,795.29	0.00	0.00	0.00
12,600.00	89.41	89.76	6,884.93	1,073.83	5,890.84	5,895.29	0.00	0.00	0.00
12,700.00	89.41	89.76	6,885.96	1,074.24	5,990.84	5,995.28	0.00	0.00	0.00
12,800.00	89.41	89.76	6,886.99	1,074.65	6,090.83	6,095.28	0.00	0.00	0.00
12,900.00	89.41	89.76	6,888.02	1,075.07	6,190.82	6,195.27	0.00	0.00	0.00
13,000.00	89.41	89.76	6,889.05	1,075.48	6,290.82	6,295.27	0.00	0.00	0.00
13,100.00	89.41	89.76	6,890.08	1,075.89	6,390.81	6,395.26	0.00	0.00	0.00
13,200.00	89.41	89.76	6,891.11	1,076.30	6,490.81	6,495.26	0.00	0.00	0.00
13,300.00	89.41	89.76	6,892.14	1,076.71	6,590.80	6,595.25	0.00	0.00	0.00
13,400.00	89.41	89.76	6,893.17	1,077.12	6,690.79	6,695.25	0.00	0.00	0.00
13,500.00	89.41	89.76	6,894.21	1,077.53	6,790.79	6,795.24	0.00	0.00	0.00
13,600.00	89.41	89.76	6,895.24	1,077.95	6,890.78	6,895.24	0.00	0.00	0.00
13,700.00	89.41	89.76	6,896.27	1,078.36	6,990.77	6,995.23	0.00	0.00	0.00
13,800.00	89.41	89.76	6,897.30	1,078.77	7,090.77	7,095.22	0.00	0.00	0.00
13,900.00	89.41	89.76	6,898.33	1,079.18	7,190.76	7,195.22	0.00	0.00	0.00
14,000.00	89.41	89.76	6,899.36	1,079.59	7,290.76	7,295.21	0.00	0.00	0.00
14,100.00	89.41	89.76	6,900.39	1,080.00	7,390.75	7,395.21	0.00	0.00	0.00
14,200.00	89.41	89.76	6,901.42	1,080.41	7,490.74	7,495.20	0.00	0.00	0.00
14,300.00	89.41	89.76	6,902.45	1,080.82	7,590.74	7,595.20	0.00	0.00	0.00
14,400.00	89.41	89.76	6,903.48	1,081.24	7,690.73	7,695.19	0.00	0.00	0.00
14,500.00	89.41	89.76	6,904.52	1,081.65	7,790.73	7,795.19	0.00	0.00	0.00
14,600.00	89.41	89.76	6,905.55	1,082.06	7,890.72	7,895.18	0.00	0.00	0.00
14,700.00	89.41	89.76	6,906.58	1,082.47	7,990.71	7,995.18	0.00	0.00	0.00
14,800.00	89.41	89.76	6,907.61	1,082.88	8,090.71	8,095.17	0.00	0.00	0.00



<b>Database:</b>	EDM 5000.14 Single User Db	<b>Local Co-ordinate Reference:</b>	Well Boomerang 25N-3A-L
<b>Company:</b>	Synergy Resources Corporation	<b>TVD Reference:</b>	GL 4770+KB 20 @ 4790.00ft
<b>Project:</b>	SEC 5-T5N-R66W	<b>MD Reference:</b>	GL 4770+KB 20 @ 4790.00ft
<b>Site:</b>	Boomerang 21-5	<b>North Reference:</b>	True
<b>Well:</b>	Boomerang 25N-3A-L	<b>Survey Calculation Method:</b>	Minimum Curvature
<b>Wellbore:</b>	OH		
<b>Design:</b>	Plan #1		

Planned Survey									
Measured Depth (ft)	Inclination (°)	Azimuth (°)	Vertical Depth (ft)	+N/-S (ft)	+E/-W (ft)	Vertical Section (ft)	Dogleg Rate (°/100ft)	Build Rate (°/100ft)	Turn Rate (°/100ft)
14,900.00	89.41	89.76	6,908.64	1,083.29	8,190.70	8,195.17	0.00	0.00	0.00
15,000.00	89.41	89.76	6,909.67	1,083.70	8,290.69	8,295.16	0.00	0.00	0.00
15,100.00	89.41	89.76	6,910.70	1,084.12	8,390.69	8,395.16	0.00	0.00	0.00
15,200.00	89.41	89.76	6,911.73	1,084.53	8,490.68	8,495.15	0.00	0.00	0.00
15,300.00	89.41	89.76	6,912.76	1,084.94	8,590.68	8,595.15	0.00	0.00	0.00
15,400.00	89.41	89.76	6,913.80	1,085.35	8,690.67	8,695.14	0.00	0.00	0.00
15,500.00	89.41	89.76	6,914.83	1,085.76	8,790.66	8,795.13	0.00	0.00	0.00
15,600.00	89.41	89.76	6,915.86	1,086.17	8,890.66	8,895.13	0.00	0.00	0.00
15,700.00	89.41	89.76	6,916.89	1,086.58	8,990.65	8,995.12	0.00	0.00	0.00
15,800.00	89.41	89.76	6,917.92	1,086.99	9,090.65	9,095.12	0.00	0.00	0.00
15,900.00	89.41	89.76	6,918.95	1,087.41	9,190.64	9,195.11	0.00	0.00	0.00
16,000.00	89.41	89.76	6,919.98	1,087.82	9,290.63	9,295.11	0.00	0.00	0.00
16,100.00	89.41	89.76	6,921.01	1,088.23	9,390.63	9,395.10	0.00	0.00	0.00
16,200.00	89.41	89.76	6,922.04	1,088.64	9,490.62	9,495.10	0.00	0.00	0.00
16,300.00	89.41	89.76	6,923.08	1,089.05	9,590.61	9,595.09	0.00	0.00	0.00
16,400.00	89.41	89.76	6,924.11	1,089.46	9,690.61	9,695.09	0.00	0.00	0.00
16,500.00	89.41	89.76	6,925.14	1,089.87	9,790.60	9,795.08	0.00	0.00	0.00
16,600.00	89.41	89.76	6,926.17	1,090.28	9,890.60	9,895.08	0.00	0.00	0.00
16,700.00	89.41	89.76	6,927.20	1,090.70	9,990.59	9,995.07	0.00	0.00	0.00
16,800.00	89.41	89.76	6,928.23	1,091.11	10,090.58	10,095.07	0.00	0.00	0.00
16,900.00	89.41	89.76	6,929.26	1,091.52	10,190.58	10,195.06	0.00	0.00	0.00
17,000.00	89.41	89.76	6,930.29	1,091.93	10,290.57	10,295.05	0.00	0.00	0.00
17,100.00	89.41	89.76	6,931.32	1,092.34	10,390.57	10,395.05	0.00	0.00	0.00
17,200.00	89.41	89.76	6,932.35	1,092.75	10,490.56	10,495.04	0.00	0.00	0.00
17,300.00	89.41	89.76	6,933.39	1,093.16	10,590.55	10,595.04	0.00	0.00	0.00
17,400.00	89.41	89.76	6,934.42	1,093.58	10,690.55	10,695.03	0.00	0.00	0.00
17,500.00	89.41	89.76	6,935.45	1,093.99	10,790.54	10,795.03	0.00	0.00	0.00
17,553.57	89.41	89.76	6,936.00	1,094.21	10,844.11	10,848.60	0.00	0.00	0.00
TD at 17553.57 - PBHL_Boomerang 25N-3A-L(314 FNL 2481 FWL)									

Design Targets									
Target Name	Dip Angle (°)	Dip Dir. (°)	TVD (ft)	+N/-S (ft)	+E/-W (ft)	Northing (ft)	Easting (ft)	Latitude	Longitude
PLP_Boomerang 25N-3, - hit/miss target - Shape - Point	0.00	0.00	6,830.00	1,043.02	564.80	1,402,574.14	3,194,439.25	40.4363580	-104.8015010
- plan misses target center by 8.91ft at 7273.59ft MD (6830.01 TVD, 1051.92 N, 564.76 E)									
PBHL_Boomerang 25N- - plan hits target center - Point	0.00	0.00	6,936.00	1,094.21	10,844.11	1,402,706.07	3,204,717.85	40.4364920	-104.7645730

Casing Points					
Measured Depth (ft)	Vertical Depth (ft)	Name		Casing Diameter (in)	Hole Diameter (in)
1,765.76	1,750.00	9 5/8"		9.625	13.500

<b>Database:</b>	EDM 5000.14 Single User Db	<b>Local Co-ordinate Reference:</b>	Well Boomerang 25N-3A-L
<b>Company:</b>	Synergy Resources Corporation	<b>TVD Reference:</b>	GL 4770+KB 20 @ 4790.00ft
<b>Project:</b>	SEC 5-T5N-R66W	<b>MD Reference:</b>	GL 4770+KB 20 @ 4790.00ft
<b>Site:</b>	Boomerang 21-5	<b>North Reference:</b>	True
<b>Well:</b>	Boomerang 25N-3A-L	<b>Survey Calculation Method:</b>	Minimum Curvature
<b>Wellbore:</b>	OH		
<b>Design:</b>	Plan #1		

Plan Annotations				
Measured Depth (ft)	Vertical Depth (ft)	Local Coordinates		Comment
		+N/-S (ft)	+E/-W (ft)	
300.00	300.00	0.00	0.00	Start Build 2.00
775.00	772.83	39.20	-2.71	Start 5497.77 hold at 775.00 MD
6,272.77	6,195.20	944.42	-65.38	Start DLS 9.00 TFO 93.77
7,273.12	6,830.00	1,051.92	564.29	LP(290 FNL 2487 FEL)
17,553.57	6,936.00	1,094.21	10,844.11	TD at 17553.57