



Project: SEC 5-T5N-R66W
Site: Boomerang 21-5
Well: Boomerang 25N-3B-L
Wellbore: OH
Design: Plan #1

SECTION DETAILS										Target
MD	Inc	Azi	TVD	+N/-S	+E/-W	Dleg	TFace	VSect		
0.00	0.00	0.00	0.00	0.00	0.00	0.00	0.00	0.00		
200.00	0.00	0.00	200.00	0.00	0.00	0.00	0.00	0.00		
680.00	9.60	357.10	677.76	40.07	-2.03	2.00	357.10	-1.49		
6405.66	9.60	357.10	6323.24	993.71	-50.34	0.00	0.00	-36.98		
7403.14	89.41	89.23	6955.00	1107.85	578.32	9.00	92.20	593.15		
17685.09	89.41	89.23	7061.00	1246.12	10858.79	0.00	0.00	10874.55	PBHL	

PROJECT DETAILS: SEC 5-T5N-R66W

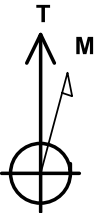
Geodetic System: US State Plane 1983
Datum: North American Datum 1983
Ellipsoid: GRS 1980
Zone: Colorado Northern Zone
Colorado Northern Zone
System Datum: Mean Sea Level

DESIGN TARGET DETAILS

Name	TVD	+N/-S	+E/-W	Northing	Easting	Latitude	Longitude	Shape
PLP	6955.00	1174.52	578.99	1402720.70	3194452.57	40.4367600	-104.8014490	Point
- plan misses target center by 66.66ft at 7404.71ft MD (6955.01 TVD, 1107.87 N, 579.89 E)								
PBHL	7061.00	1246.12	10858.79	1402873.04	3204731.49	40.4369500	-104.7645190	Point
- plan hits target center								

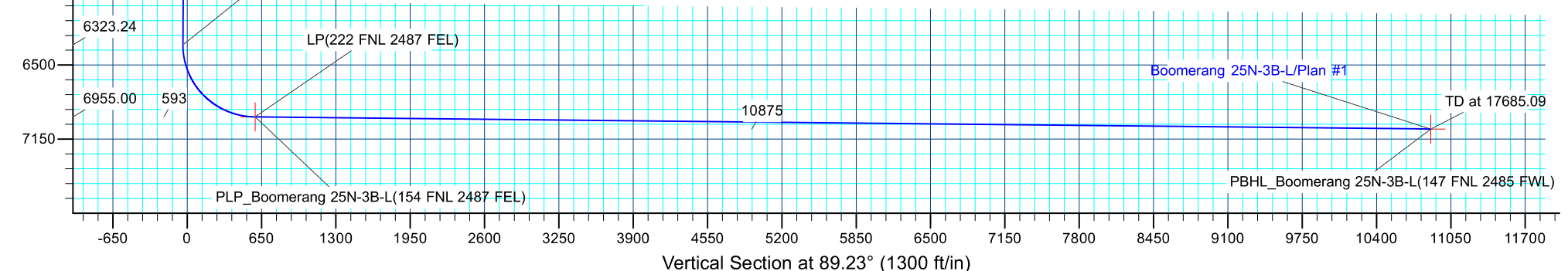
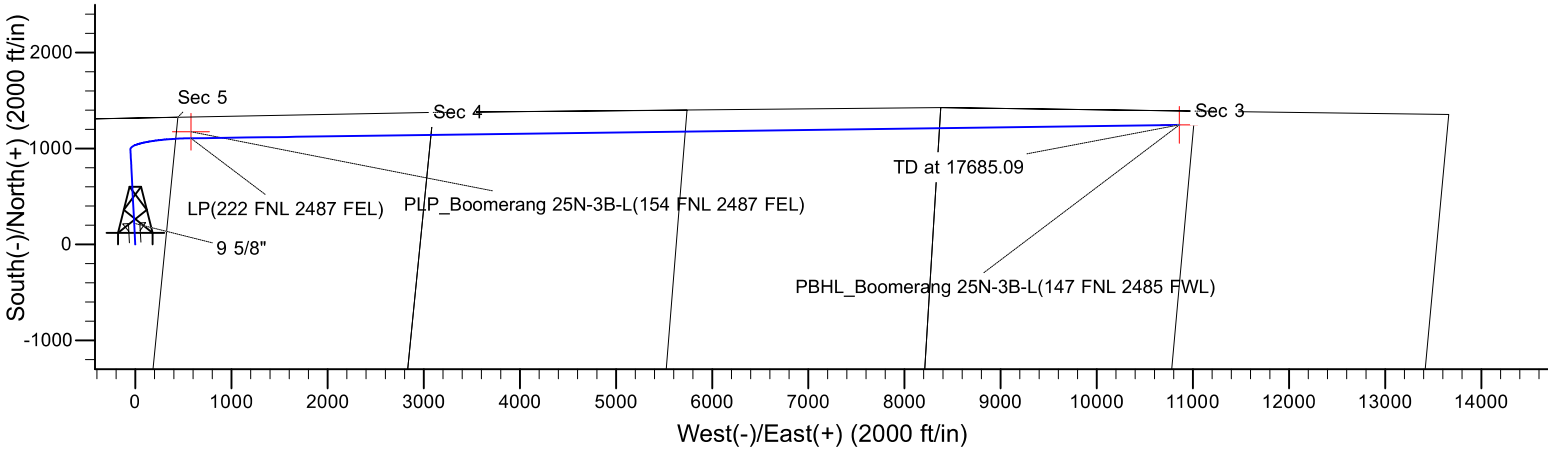
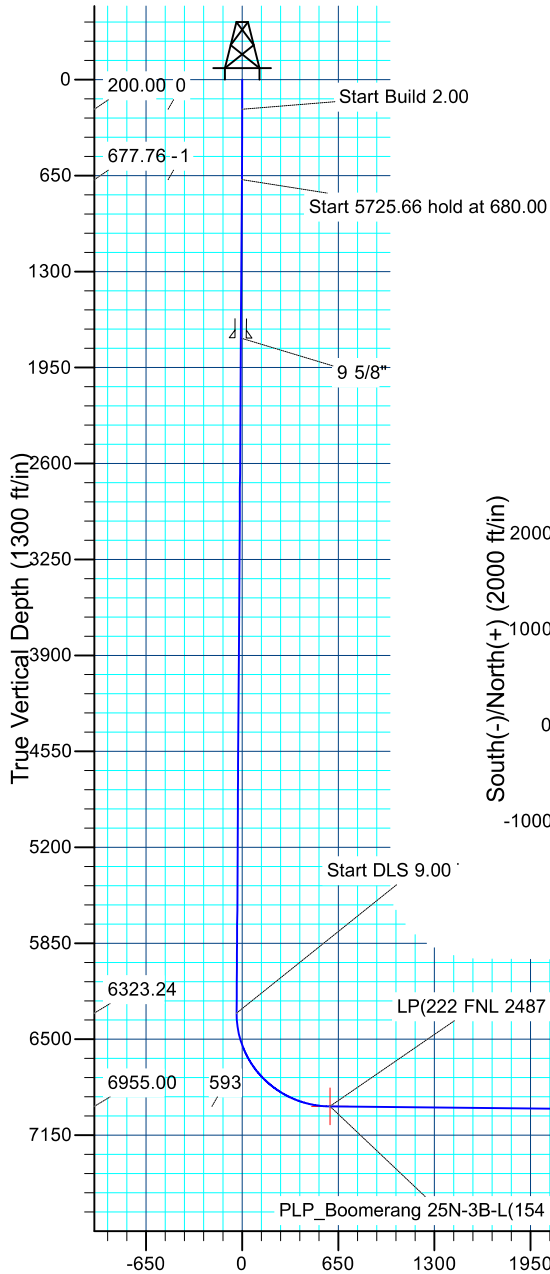
CASING DETAILS

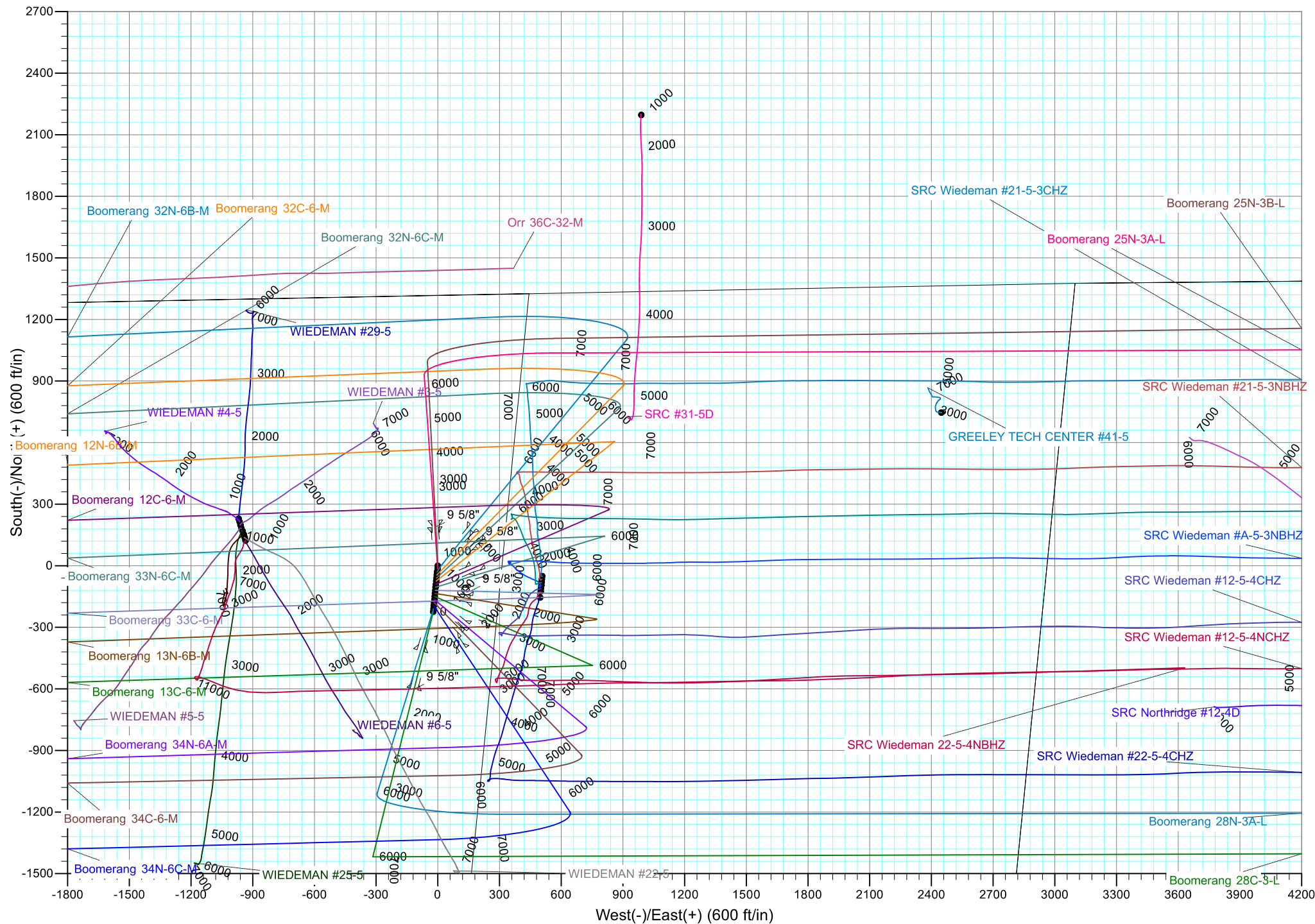
TVD	MD	Name	Size
1750.00	1767.47	9 5/8"	9.625

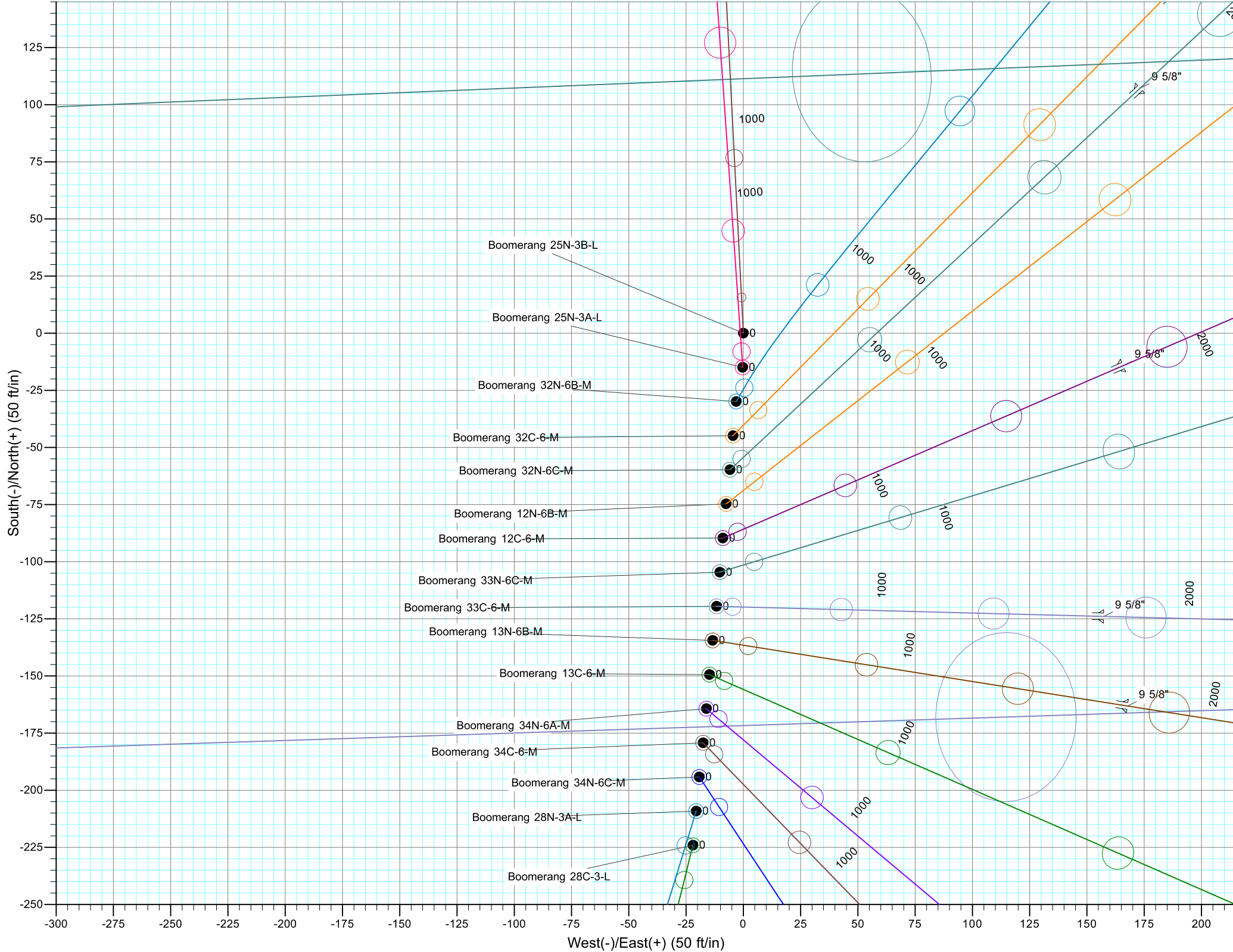


Azimuths to True North
Magnetic North: 8.26°

Magnetic Field
Strength: 52430.8snT
Dip Angle: 66.88°
Date: 3/30/2017
Model: IGRF2015









Synergy Resources Corporation

SEC 5-T5N-R66W

Boomerang 21-5

Boomerang 25N-3B-L

OH

Plan: Plan #1

Standard Planning Report

05 April, 2017

Database:	EDM 5000.14 Single User Db	Local Co-ordinate Reference:	Well Boomerang 25N-3B-L
Company:	Synergy Resources Corporation	TVD Reference:	GL 4770+KB 20 @ 4790.00ft
Project:	SEC 5-T5N-R66W	MD Reference:	GL 4770+KB 20 @ 4790.00ft
Site:	Boomerang 21-5	North Reference:	True
Well:	Boomerang 25N-3B-L	Survey Calculation Method:	Minimum Curvature
Wellbore:	OH		
Design:	Plan #1		

Project	SEC 5-T5N-R66W		
Map System:	US State Plane 1983	System Datum:	Mean Sea Level
Geo Datum:	North American Datum 1983		
Map Zone:	Colorado Northern Zone		

Site	Boomerang 21-5				
Site Position:		Northing:	1,401,541.68 ft	Latitude:	40.4335360
From:	Lat/Long	Easting:	3,193,882.83 ft	Longitude:	-104.8035290
Position Uncertainty:	3.28 ft	Slot Radius:	13.200 in	Grid Convergence:	0.45 °

Well	Boomerang 25N-3B-L					
Well Position	+N/-S	-0.01 ft	Northing:	1,401,541.67 ft	Latitude:	40.4335360
	+E/-W	0.00 ft	Easting:	3,193,882.83 ft	Longitude:	-104.8035290
Position Uncertainty		3.28 ft	Wellhead Elevation:		Ground Level:	4,770.00 ft

Wellbore	OH				
Magnetics	Model Name	Sample Date	Declination (°)	Dip Angle (°)	Field Strength (nT)
	IGRF2015	3/30/2017	8.26	66.88	52,431

Design	Plan #1			
Audit Notes:				
Version:	Phase:	PLAN	Tie On Depth:	0.00
Vertical Section:	Depth From (TVD) (ft)	+N/-S (ft)	+E/-W (ft)	Direction (°)
	0.00	0.00	0.00	89.23

Plan Survey Tool Program	Date	4/5/2017		
Depth From (ft)	Depth To (ft)	Survey (Wellbore)	Tool Name	Remarks
1	0.00	17,685.07 Plan #1 (OH)	MWD+IFR1	
			OWSG MWD + IFR1	

Plan Sections										
Measured Depth (ft)	Inclination (°)	Azimuth (°)	Vertical Depth (ft)	+N/-S (ft)	+E/-W (ft)	Dogleg Rate (°/100ft)	Build Rate (°/100ft)	Turn Rate (°/100ft)	TFO (°)	Target
0.00	0.00	0.00	0.00	0.00	0.00	0.00	0.00	0.00	0.00	
200.00	0.00	0.00	200.00	0.00	0.00	0.00	0.00	0.00	0.00	
680.00	9.60	357.10	677.76	40.07	-2.03	2.00	2.00	0.00	357.10	
6,405.66	9.60	357.10	6,323.24	993.71	-50.34	0.00	0.00	0.00	0.00	
7,403.14	89.41	89.23	6,955.00	1,107.85	578.32	9.00	8.00	9.24	92.20	
17,685.09	89.41	89.23	7,061.00	1,246.12	10,858.79	0.00	0.00	0.00	0.00	PBHL_Boomerang 25

Database:	EDM 5000.14 Single User Db	Local Co-ordinate Reference:	Well Boomerang 25N-3B-L
Company:	Synergy Resources Corporation	TVD Reference:	GL 4770+KB 20 @ 4790.00ft
Project:	SEC 5-T5N-R66W	MD Reference:	GL 4770+KB 20 @ 4790.00ft
Site:	Boomerang 21-5	North Reference:	True
Well:	Boomerang 25N-3B-L	Survey Calculation Method:	Minimum Curvature
Wellbore:	OH		
Design:	Plan #1		

Planned Survey									
Measured Depth (ft)	Inclination (°)	Azimuth (°)	Vertical Depth (ft)	+N/-S (ft)	+E/-W (ft)	Vertical Section (ft)	Dogleg Rate (°/100ft)	Build Rate (°/100ft)	Turn Rate (°/100ft)
0.00	0.00	0.00	0.00	0.00	0.00	0.00	0.00	0.00	0.00
100.00	0.00	0.00	100.00	0.00	0.00	0.00	0.00	0.00	0.00
200.00	0.00	0.00	200.00	0.00	0.00	0.00	0.00	0.00	0.00
Start Build 2.00									
300.00	2.00	357.10	299.98	1.74	-0.09	-0.06	2.00	2.00	0.00
400.00	4.00	357.10	399.84	6.97	-0.35	-0.26	2.00	2.00	0.00
500.00	6.00	357.10	499.45	15.67	-0.79	-0.58	2.00	2.00	0.00
600.00	8.00	357.10	598.70	27.84	-1.41	-1.04	2.00	2.00	0.00
680.00	9.60	357.10	677.76	40.07	-2.03	-1.49	2.00	2.00	0.00
Start 5725.66 hold at 680.00 MD									
700.00	9.60	357.10	697.48	43.40	-2.20	-1.62	0.00	0.00	0.00
800.00	9.60	357.10	796.08	60.05	-3.04	-2.23	0.00	0.00	0.00
900.00	9.60	357.10	894.68	76.71	-3.89	-2.85	0.00	0.00	0.00
1,000.00	9.60	357.10	993.28	93.36	-4.73	-3.47	0.00	0.00	0.00
1,100.00	9.60	357.10	1,091.88	110.02	-5.57	-4.09	0.00	0.00	0.00
1,200.00	9.60	357.10	1,190.48	126.68	-6.42	-4.71	0.00	0.00	0.00
1,300.00	9.60	357.10	1,289.07	143.33	-7.26	-5.33	0.00	0.00	0.00
1,400.00	9.60	357.10	1,387.67	159.99	-8.10	-5.95	0.00	0.00	0.00
1,500.00	9.60	357.10	1,486.27	176.64	-8.95	-6.57	0.00	0.00	0.00
1,600.00	9.60	357.10	1,584.87	193.30	-9.79	-7.19	0.00	0.00	0.00
1,700.00	9.60	357.10	1,683.47	209.95	-10.64	-7.81	0.00	0.00	0.00
1,767.47	9.60	357.10	1,750.00	221.19	-11.21	-8.23	0.00	0.00	0.00
9 5/8"									
1,800.00	9.60	357.10	1,782.07	226.61	-11.48	-8.43	0.00	0.00	0.00
1,900.00	9.60	357.10	1,880.67	243.26	-12.32	-9.05	0.00	0.00	0.00
2,000.00	9.60	357.10	1,979.27	259.92	-13.17	-9.67	0.00	0.00	0.00
2,100.00	9.60	357.10	2,077.87	276.58	-14.01	-10.29	0.00	0.00	0.00
2,200.00	9.60	357.10	2,176.47	293.23	-14.85	-10.91	0.00	0.00	0.00
2,300.00	9.60	357.10	2,275.07	309.89	-15.70	-11.53	0.00	0.00	0.00
2,400.00	9.60	357.10	2,373.67	326.54	-16.54	-12.15	0.00	0.00	0.00
2,500.00	9.60	357.10	2,472.27	343.20	-17.39	-12.77	0.00	0.00	0.00
2,600.00	9.60	357.10	2,570.87	359.85	-18.23	-13.39	0.00	0.00	0.00
2,700.00	9.60	357.10	2,669.47	376.51	-19.07	-14.01	0.00	0.00	0.00
2,800.00	9.60	357.10	2,768.07	393.16	-19.92	-14.63	0.00	0.00	0.00
2,900.00	9.60	357.10	2,866.67	409.82	-20.76	-15.25	0.00	0.00	0.00
3,000.00	9.60	357.10	2,965.27	426.48	-21.60	-15.87	0.00	0.00	0.00
3,100.00	9.60	357.10	3,063.87	443.13	-22.45	-16.49	0.00	0.00	0.00
3,200.00	9.60	357.10	3,162.47	459.79	-23.29	-17.11	0.00	0.00	0.00
3,300.00	9.60	357.10	3,261.07	476.44	-24.14	-17.73	0.00	0.00	0.00
3,400.00	9.60	357.10	3,359.67	493.10	-24.98	-18.35	0.00	0.00	0.00
3,500.00	9.60	357.10	3,458.27	509.75	-25.82	-18.97	0.00	0.00	0.00
3,600.00	9.60	357.10	3,556.87	526.41	-26.67	-19.59	0.00	0.00	0.00
3,700.00	9.60	357.10	3,655.47	543.06	-27.51	-20.21	0.00	0.00	0.00
3,800.00	9.60	357.10	3,754.06	559.72	-28.35	-20.83	0.00	0.00	0.00
3,900.00	9.60	357.10	3,852.66	576.37	-29.20	-21.45	0.00	0.00	0.00
4,000.00	9.60	357.10	3,951.26	593.03	-30.04	-22.07	0.00	0.00	0.00
4,100.00	9.60	357.10	4,049.86	609.69	-30.89	-22.69	0.00	0.00	0.00
4,200.00	9.60	357.10	4,148.46	626.34	-31.73	-23.31	0.00	0.00	0.00
4,300.00	9.60	357.10	4,247.06	643.00	-32.57	-23.93	0.00	0.00	0.00
4,400.00	9.60	357.10	4,345.66	659.65	-33.42	-24.55	0.00	0.00	0.00
4,500.00	9.60	357.10	4,444.26	676.31	-34.26	-25.17	0.00	0.00	0.00
4,600.00	9.60	357.10	4,542.86	692.96	-35.10	-25.79	0.00	0.00	0.00
4,700.00	9.60	357.10	4,641.46	709.62	-35.95	-26.41	0.00	0.00	0.00

Database:	EDM 5000.14 Single User Db	Local Co-ordinate Reference:	Well Boomerang 25N-3B-L
Company:	Synergy Resources Corporation	TVD Reference:	GL 4770+KB 20 @ 4790.00ft
Project:	SEC 5-T5N-R66W	MD Reference:	GL 4770+KB 20 @ 4790.00ft
Site:	Boomerang 21-5	North Reference:	True
Well:	Boomerang 25N-3B-L	Survey Calculation Method:	Minimum Curvature
Wellbore:	OH		
Design:	Plan #1		

Planned Survey									
Measured Depth (ft)	Inclination (°)	Azimuth (°)	Vertical Depth (ft)	+N/-S (ft)	+E/-W (ft)	Vertical Section (ft)	Dogleg Rate (°/100ft)	Build Rate (°/100ft)	Turn Rate (°/100ft)
4,800.00	9.60	357.10	4,740.06	726.27	-36.79	-27.03	0.00	0.00	0.00
4,900.00	9.60	357.10	4,838.66	742.93	-37.64	-27.65	0.00	0.00	0.00
5,000.00	9.60	357.10	4,937.26	759.59	-38.48	-28.27	0.00	0.00	0.00
5,100.00	9.60	357.10	5,035.86	776.24	-39.32	-28.89	0.00	0.00	0.00
5,200.00	9.60	357.10	5,134.46	792.90	-40.17	-29.51	0.00	0.00	0.00
5,300.00	9.60	357.10	5,233.06	809.55	-41.01	-30.13	0.00	0.00	0.00
5,400.00	9.60	357.10	5,331.66	826.21	-41.85	-30.75	0.00	0.00	0.00
5,500.00	9.60	357.10	5,430.26	842.86	-42.70	-31.37	0.00	0.00	0.00
5,600.00	9.60	357.10	5,528.86	859.52	-43.54	-31.99	0.00	0.00	0.00
5,700.00	9.60	357.10	5,627.46	876.17	-44.39	-32.61	0.00	0.00	0.00
5,800.00	9.60	357.10	5,726.06	892.83	-45.23	-33.23	0.00	0.00	0.00
5,900.00	9.60	357.10	5,824.66	909.49	-46.07	-33.85	0.00	0.00	0.00
6,000.00	9.60	357.10	5,923.26	926.14	-46.92	-34.47	0.00	0.00	0.00
6,100.00	9.60	357.10	6,021.86	942.80	-47.76	-35.09	0.00	0.00	0.00
6,200.00	9.60	357.10	6,120.46	959.45	-48.60	-35.71	0.00	0.00	0.00
6,300.00	9.60	357.10	6,219.06	976.11	-49.45	-36.33	0.00	0.00	0.00
6,400.00	9.60	357.10	6,317.65	992.76	-50.29	-36.95	0.00	0.00	0.00
6,405.66	9.60	357.10	6,323.24	993.71	-50.34	-36.98	0.00	0.00	0.00
Start DLS 9.00 TFO 92.20									
6,500.00	12.54	39.89	6,415.96	1,009.45	-44.16	-30.59	9.00	3.12	45.36
6,600.00	19.55	60.91	6,512.08	1,025.95	-22.52	-8.74	9.00	7.01	21.02
6,700.00	27.71	70.56	6,603.65	1,041.86	14.10	28.10	9.00	8.16	9.64
6,800.00	36.24	76.00	6,688.42	1,056.78	64.80	79.00	9.00	8.53	5.44
6,900.00	44.94	79.58	6,764.29	1,070.35	128.35	142.72	9.00	8.70	3.58
7,000.00	53.72	82.20	6,829.41	1,082.23	203.17	217.70	9.00	8.78	2.62
7,100.00	62.54	84.29	6,882.16	1,092.13	287.43	302.08	9.00	8.82	2.09
7,200.00	71.39	86.07	6,921.25	1,099.81	379.04	393.78	9.00	8.85	1.78
7,300.00	80.26	87.67	6,945.72	1,105.08	475.75	490.56	9.00	8.87	1.60
7,400.00	89.13	89.18	6,954.96	1,107.80	575.18	590.02	9.00	8.87	1.52
7,403.14	89.41	89.23	6,955.00	1,107.85	578.32	593.15	9.00	8.87	1.50
LP(222 FNL 2487 FEL)									
7,404.71	89.41	89.23	6,955.01	1,107.87	579.89	594.72	0.00	0.00	0.00
PLP_Boomerang 25N-3B-L(154 FNL 2487 FEL)									
7,500.00	89.41	89.23	6,955.99	1,109.15	675.17	690.01	0.00	0.00	0.00
7,600.00	89.41	89.23	6,957.03	1,110.49	775.15	790.01	0.00	0.00	0.00
7,700.00	89.41	89.23	6,958.06	1,111.84	875.14	890.00	0.00	0.00	0.00
7,800.00	89.41	89.23	6,959.09	1,113.18	975.12	989.99	0.00	0.00	0.00
7,900.00	89.41	89.23	6,960.12	1,114.53	1,075.11	1,089.99	0.00	0.00	0.00
8,000.00	89.41	89.23	6,961.15	1,115.87	1,175.09	1,189.98	0.00	0.00	0.00
8,100.00	89.41	89.23	6,962.18	1,117.22	1,275.08	1,289.98	0.00	0.00	0.00
8,200.00	89.41	89.23	6,963.21	1,118.56	1,375.07	1,389.97	0.00	0.00	0.00
8,300.00	89.41	89.23	6,964.24	1,119.91	1,475.05	1,489.97	0.00	0.00	0.00
8,400.00	89.41	89.23	6,965.27	1,121.25	1,575.04	1,589.96	0.00	0.00	0.00
8,500.00	89.41	89.23	6,966.30	1,122.60	1,675.02	1,689.96	0.00	0.00	0.00
8,600.00	89.41	89.23	6,967.33	1,123.94	1,775.01	1,789.95	0.00	0.00	0.00
8,700.00	89.41	89.23	6,968.37	1,125.29	1,874.99	1,889.95	0.00	0.00	0.00
8,800.00	89.41	89.23	6,969.40	1,126.63	1,974.98	1,989.94	0.00	0.00	0.00
8,900.00	89.41	89.23	6,970.43	1,127.98	2,074.97	2,089.94	0.00	0.00	0.00
9,000.00	89.41	89.23	6,971.46	1,129.32	2,174.95	2,189.93	0.00	0.00	0.00
9,100.00	89.41	89.23	6,972.49	1,130.67	2,274.94	2,289.93	0.00	0.00	0.00
9,200.00	89.41	89.23	6,973.52	1,132.01	2,374.92	2,389.92	0.00	0.00	0.00
9,300.00	89.41	89.23	6,974.55	1,133.36	2,474.91	2,489.91	0.00	0.00	0.00
9,400.00	89.41	89.23	6,975.58	1,134.70	2,574.89	2,589.91	0.00	0.00	0.00

Database:	EDM 5000.14 Single User Db	Local Co-ordinate Reference:	Well Boomerang 25N-3B-L
Company:	Synergy Resources Corporation	TVD Reference:	GL 4770+KB 20 @ 4790.00ft
Project:	SEC 5-T5N-R66W	MD Reference:	GL 4770+KB 20 @ 4790.00ft
Site:	Boomerang 21-5	North Reference:	True
Well:	Boomerang 25N-3B-L	Survey Calculation Method:	Minimum Curvature
Wellbore:	OH		
Design:	Plan #1		

Planned Survey									
Measured Depth (ft)	Inclination (°)	Azimuth (°)	Vertical Depth (ft)	+N/-S (ft)	+E/-W (ft)	Vertical Section (ft)	Dogleg Rate (°/100ft)	Build Rate (°/100ft)	Turn Rate (°/100ft)
9,500.00	89.41	89.23	6,976.61	1,136.05	2,674.88	2,689.90	0.00	0.00	0.00
9,600.00	89.41	89.23	6,977.64	1,137.39	2,774.86	2,789.90	0.00	0.00	0.00
9,700.00	89.41	89.23	6,978.68	1,138.74	2,874.85	2,889.89	0.00	0.00	0.00
9,800.00	89.41	89.23	6,979.71	1,140.08	2,974.84	2,989.89	0.00	0.00	0.00
9,900.00	89.41	89.23	6,980.74	1,141.43	3,074.82	3,089.88	0.00	0.00	0.00
10,000.00	89.41	89.23	6,981.77	1,142.77	3,174.81	3,189.88	0.00	0.00	0.00
10,100.00	89.41	89.23	6,982.80	1,144.11	3,274.79	3,289.87	0.00	0.00	0.00
10,200.00	89.41	89.23	6,983.83	1,145.46	3,374.78	3,389.87	0.00	0.00	0.00
10,300.00	89.41	89.23	6,984.86	1,146.80	3,474.76	3,489.86	0.00	0.00	0.00
10,400.00	89.41	89.23	6,985.89	1,148.15	3,574.75	3,589.86	0.00	0.00	0.00
10,500.00	89.41	89.23	6,986.92	1,149.49	3,674.74	3,689.85	0.00	0.00	0.00
10,600.00	89.41	89.23	6,987.95	1,150.84	3,774.72	3,789.85	0.00	0.00	0.00
10,700.00	89.41	89.23	6,988.99	1,152.18	3,874.71	3,889.84	0.00	0.00	0.00
10,800.00	89.41	89.23	6,990.02	1,153.53	3,974.69	3,989.84	0.00	0.00	0.00
10,900.00	89.41	89.23	6,991.05	1,154.87	4,074.68	4,089.83	0.00	0.00	0.00
11,000.00	89.41	89.23	6,992.08	1,156.22	4,174.66	4,189.82	0.00	0.00	0.00
11,100.00	89.41	89.23	6,993.11	1,157.56	4,274.65	4,289.82	0.00	0.00	0.00
11,200.00	89.41	89.23	6,994.14	1,158.91	4,374.63	4,389.81	0.00	0.00	0.00
11,300.00	89.41	89.23	6,995.17	1,160.25	4,474.62	4,489.81	0.00	0.00	0.00
11,400.00	89.41	89.23	6,996.20	1,161.60	4,574.61	4,589.80	0.00	0.00	0.00
11,500.00	89.41	89.23	6,997.23	1,162.94	4,674.59	4,689.80	0.00	0.00	0.00
11,600.00	89.41	89.23	6,998.26	1,164.29	4,774.58	4,789.79	0.00	0.00	0.00
11,700.00	89.41	89.23	6,999.30	1,165.63	4,874.56	4,889.79	0.00	0.00	0.00
11,800.00	89.41	89.23	7,000.33	1,166.98	4,974.55	4,989.78	0.00	0.00	0.00
11,900.00	89.41	89.23	7,001.36	1,168.32	5,074.53	5,089.78	0.00	0.00	0.00
12,000.00	89.41	89.23	7,002.39	1,169.67	5,174.52	5,189.77	0.00	0.00	0.00
12,100.00	89.41	89.23	7,003.42	1,171.01	5,274.51	5,289.77	0.00	0.00	0.00
12,200.00	89.41	89.23	7,004.45	1,172.36	5,374.49	5,389.76	0.00	0.00	0.00
12,300.00	89.41	89.23	7,005.48	1,173.70	5,474.48	5,489.76	0.00	0.00	0.00
12,400.00	89.41	89.23	7,006.51	1,175.05	5,574.46	5,589.75	0.00	0.00	0.00
12,500.00	89.41	89.23	7,007.54	1,176.39	5,674.45	5,689.74	0.00	0.00	0.00
12,600.00	89.41	89.23	7,008.57	1,177.74	5,774.43	5,789.74	0.00	0.00	0.00
12,700.00	89.41	89.23	7,009.61	1,179.08	5,874.42	5,889.73	0.00	0.00	0.00
12,800.00	89.41	89.23	7,010.64	1,180.43	5,974.41	5,989.73	0.00	0.00	0.00
12,900.00	89.41	89.23	7,011.67	1,181.77	6,074.39	6,089.72	0.00	0.00	0.00
13,000.00	89.41	89.23	7,012.70	1,183.12	6,174.38	6,189.72	0.00	0.00	0.00
13,100.00	89.41	89.23	7,013.73	1,184.46	6,274.36	6,289.71	0.00	0.00	0.00
13,200.00	89.41	89.23	7,014.76	1,185.81	6,374.35	6,389.71	0.00	0.00	0.00
13,300.00	89.41	89.23	7,015.79	1,187.15	6,474.33	6,489.70	0.00	0.00	0.00
13,400.00	89.41	89.23	7,016.82	1,188.49	6,574.32	6,589.70	0.00	0.00	0.00
13,500.00	89.41	89.23	7,017.85	1,189.84	6,674.30	6,689.69	0.00	0.00	0.00
13,600.00	89.41	89.23	7,018.88	1,191.18	6,774.29	6,789.69	0.00	0.00	0.00
13,700.00	89.41	89.23	7,019.91	1,192.53	6,874.28	6,889.68	0.00	0.00	0.00
13,800.00	89.41	89.23	7,020.95	1,193.87	6,974.26	6,989.68	0.00	0.00	0.00
13,900.00	89.41	89.23	7,021.98	1,195.22	7,074.25	7,089.67	0.00	0.00	0.00
14,000.00	89.41	89.23	7,023.01	1,196.56	7,174.23	7,189.67	0.00	0.00	0.00
14,100.00	89.41	89.23	7,024.04	1,197.91	7,274.22	7,289.66	0.00	0.00	0.00
14,200.00	89.41	89.23	7,025.07	1,199.25	7,374.20	7,389.65	0.00	0.00	0.00
14,300.00	89.41	89.23	7,026.10	1,200.60	7,474.19	7,489.65	0.00	0.00	0.00
14,400.00	89.41	89.23	7,027.13	1,201.94	7,574.18	7,589.64	0.00	0.00	0.00
14,500.00	89.41	89.23	7,028.16	1,203.29	7,674.16	7,689.64	0.00	0.00	0.00
14,600.00	89.41	89.23	7,029.19	1,204.63	7,774.15	7,789.63	0.00	0.00	0.00
14,700.00	89.41	89.23	7,030.22	1,205.98	7,874.13	7,889.63	0.00	0.00	0.00
14,800.00	89.41	89.23	7,031.26	1,207.32	7,974.12	7,989.62	0.00	0.00	0.00

Database:	EDM 5000.14 Single User Db	Local Co-ordinate Reference:	Well Boomerang 25N-3B-L
Company:	Synergy Resources Corporation	TVD Reference:	GL 4770+KB 20 @ 4790.00ft
Project:	SEC 5-T5N-R66W	MD Reference:	GL 4770+KB 20 @ 4790.00ft
Site:	Boomerang 21-5	North Reference:	True
Well:	Boomerang 25N-3B-L	Survey Calculation Method:	Minimum Curvature
Wellbore:	OH		
Design:	Plan #1		

Planned Survey									
Measured Depth (ft)	Inclination (°)	Azimuth (°)	Vertical Depth (ft)	+N/-S (ft)	+E/-W (ft)	Vertical Section (ft)	Dogleg Rate (°/100ft)	Build Rate (°/100ft)	Turn Rate (°/100ft)
14,900.00	89.41	89.23	7,032.29	1,208.67	8,074.10	8,089.62	0.00	0.00	0.00
15,000.00	89.41	89.23	7,033.32	1,210.01	8,174.09	8,189.61	0.00	0.00	0.00
15,100.00	89.41	89.23	7,034.35	1,211.36	8,274.07	8,289.61	0.00	0.00	0.00
15,200.00	89.41	89.23	7,035.38	1,212.70	8,374.06	8,389.60	0.00	0.00	0.00
15,300.00	89.41	89.23	7,036.41	1,214.05	8,474.05	8,489.60	0.00	0.00	0.00
15,400.00	89.41	89.23	7,037.44	1,215.39	8,574.03	8,589.59	0.00	0.00	0.00
15,500.00	89.41	89.23	7,038.47	1,216.74	8,674.02	8,689.59	0.00	0.00	0.00
15,600.00	89.41	89.23	7,039.50	1,218.08	8,774.00	8,789.58	0.00	0.00	0.00
15,700.00	89.41	89.23	7,040.53	1,219.43	8,873.99	8,889.57	0.00	0.00	0.00
15,800.00	89.41	89.23	7,041.57	1,220.77	8,973.97	8,989.57	0.00	0.00	0.00
15,900.00	89.41	89.23	7,042.60	1,222.12	9,073.96	9,089.56	0.00	0.00	0.00
16,000.00	89.41	89.23	7,043.63	1,223.46	9,173.95	9,189.56	0.00	0.00	0.00
16,100.00	89.41	89.23	7,044.66	1,224.81	9,273.93	9,289.55	0.00	0.00	0.00
16,200.00	89.41	89.23	7,045.69	1,226.15	9,373.92	9,389.55	0.00	0.00	0.00
16,300.00	89.41	89.23	7,046.72	1,227.50	9,473.90	9,489.54	0.00	0.00	0.00
16,400.00	89.41	89.23	7,047.75	1,228.84	9,573.89	9,589.54	0.00	0.00	0.00
16,500.00	89.41	89.23	7,048.78	1,230.19	9,673.87	9,689.53	0.00	0.00	0.00
16,600.00	89.41	89.23	7,049.81	1,231.53	9,773.86	9,789.53	0.00	0.00	0.00
16,700.00	89.41	89.23	7,050.84	1,232.87	9,873.85	9,889.52	0.00	0.00	0.00
16,800.00	89.41	89.23	7,051.88	1,234.22	9,973.83	9,989.52	0.00	0.00	0.00
16,900.00	89.41	89.23	7,052.91	1,235.56	10,073.82	10,089.51	0.00	0.00	0.00
17,000.00	89.41	89.23	7,053.94	1,236.91	10,173.80	10,189.51	0.00	0.00	0.00
17,100.00	89.41	89.23	7,054.97	1,238.25	10,273.79	10,289.50	0.00	0.00	0.00
17,200.00	89.41	89.23	7,056.00	1,239.60	10,373.77	10,389.50	0.00	0.00	0.00
17,300.00	89.41	89.23	7,057.03	1,240.94	10,473.76	10,489.49	0.00	0.00	0.00
17,400.00	89.41	89.23	7,058.06	1,242.29	10,573.74	10,589.48	0.00	0.00	0.00
17,500.00	89.41	89.23	7,059.09	1,243.63	10,673.73	10,689.48	0.00	0.00	0.00
17,600.00	89.41	89.23	7,060.12	1,244.98	10,773.72	10,789.47	0.00	0.00	0.00
17,685.09	89.41	89.23	7,061.00	1,246.12	10,858.79	10,874.55	0.00	0.00	0.00
TD at 17685.09 - PBHL_Boomerang 25N-3B-L(147 FNL 2485 FWL)									

Design Targets									
Target Name	Dip Angle (°)	Dip Dir. (°)	TVD (ft)	+N/-S (ft)	+E/-W (ft)	Northing (ft)	Easting (ft)	Latitude	Longitude
PLP_Boomerang 25N-3I - hit/miss target - Shape - Point	0.00	0.00	6,955.00	1,174.52	578.99	1,402,720.70	3,194,452.57	40.4367600	-104.8014490
- plan misses target center by 66.66ft at 7404.71ft MD (6955.01 TVD, 1107.87 N, 579.89 E)									
PBHL_Boomerang 25N- - plan hits target center - Point	0.00	0.00	7,061.00	1,246.12	10,858.79	1,402,873.04	3,204,731.49	40.4369500	-104.7645190

Casing Points					
Measured Depth (ft)	Vertical Depth (ft)	Name	Casing Diameter (in)	Hole Diameter (in)	
1,767.47	1,750.00	9 5/8"	9.625	13.500	

Database:	EDM 5000.14 Single User Db	Local Co-ordinate Reference:	Well Boomerang 25N-3B-L
Company:	Synergy Resources Corporation	TVD Reference:	GL 4770+KB 20 @ 4790.00ft
Project:	SEC 5-T5N-R66W	MD Reference:	GL 4770+KB 20 @ 4790.00ft
Site:	Boomerang 21-5	North Reference:	True
Well:	Boomerang 25N-3B-L	Survey Calculation Method:	Minimum Curvature
Wellbore:	OH		
Design:	Plan #1		

Plan Annotations				
Measured Depth (ft)	Vertical Depth (ft)	Local Coordinates		Comment
		+N/-S (ft)	+E/-W (ft)	
200.00	200.00	0.00	0.00	Start Build 2.00
680.00	677.76	40.07	-2.03	Start 5725.66 hold at 680.00 MD
6,405.66	6,323.24	993.71	-50.34	Start DLS 9.00 TFO 92.20
7,403.14	6,955.00	1,107.85	578.32	LP(222 FNL 2487 FEL)
17,685.09	7,061.00	1,246.12	10,858.79	TD at 17685.09