

# EXTRACTION OIL & GAS

Location: COLORADO Slot: SLOT#05 HFE 7 (1125'FSL & 1047'FWL, SEC.22)  
Field: WELD COUNTY (NAD83/TRUE NORTH) Well: HFE 7  
Facility: SEC.22-T04N-R68W Wellbore: HFE 7 PWB

Plot reference wellpath is HFE 7 PWP (REV-C.0)

True vertical depths are referenced to CYCLONE 37 (28KB) (RKB)

Measured depths are referenced to CYCLONE 37 (28KB) (RKB)

CYCLONE 37 (28KB) (RKB) to Mean Sea Level: 4946 feet

Mean Sea Level to Ground level (At Slot: SLOT#05 HFE 7 (1125'FSL & 1047'FWL, SEC.22)): 0 feet

Coordinates are in feet referenced to Slot

Grid System: NAD83 / Lambert Colorado SP, Northern Zone (501), US feet

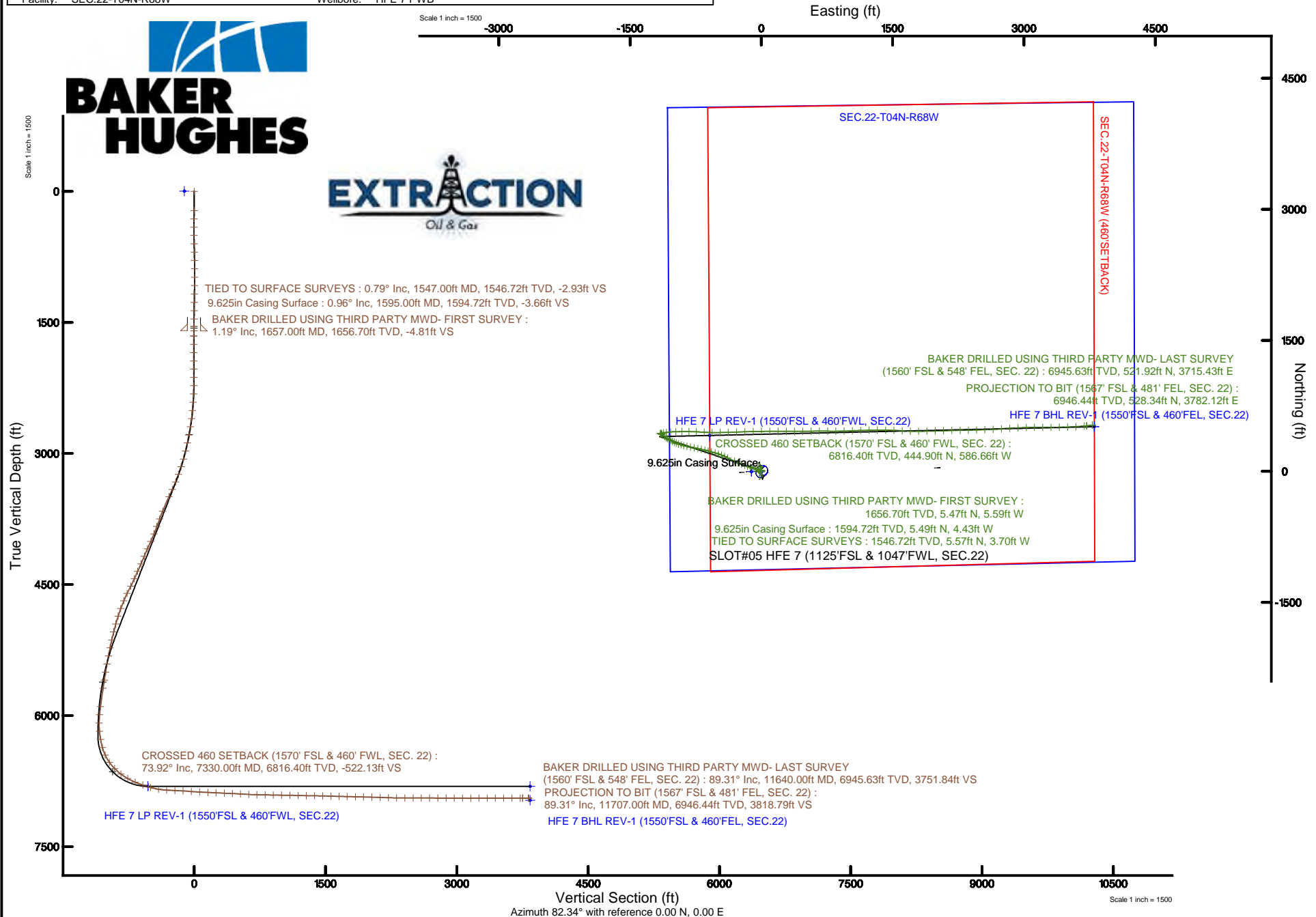
North Reference: True north

Scale: True distance

Depths are in feet

Created by: ingmjmr on 2017-09-11

Database: WA\_DEN\_Denver\_Defn





# Actual Wellpath Report

HFE 7 AWP

Page 1 of 7



## REFERENCE WELLPATH IDENTIFICATION

Operator	EXTRACTION OIL & GAS	Slot	SLOT#05 HFE 7 (1125'FSL & 1047'FWL, SEC.22)
Area	COLORADO	Well	HFE 7
Field	WELD COUNTY (NAD83/TRUE NORTH)	Wellbore	HFE 7 AWB
Facility	SEC.22-T04N-R68W		

## REPORT SETUP INFORMATION

Projection System	NAD83 / Lambert Colorado SP, Northern Zone (501), US feet	Software System	WellArchitect® 5.1
North Reference	True	User	Ingmjmr
Scale	0.999957	Report Generated	9/11/2017 at 3:14:03 PM
Convergence at slot	0.33° East	Database/Source file	WA_DEN_Denver_Defn/HFE_7_AWP.xml

## WELLPATH LOCATION

	Local coordinates		Grid coordinates		Geographic coordinates	
	North[ft]	East[ft]	Easting[US ft]	Northing[US ft]	Latitude	Longitude
Slot Location	2.55	112.14	3140863.71	1350609.83	40°17'41.003"N	104°59'42.022"W
Facility Reference Pt			3140751.59	1350606.64	40°17'40.978"N	104°59'43.469"W
Field Reference Pt			3185481.27	1419166.81	40°28'55.560"N	104°49'59.556"W

## WELLPATH DATUM

Calculation method	Minimum curvature	CYCLONE 37 (28'KB) (RKB) to Facility Vertical Datum	4946.00ft
Horizontal Reference Pt	Slot	CYCLONE 37 (28'KB) (RKB) to Mean Sea Level	4946.00ft
Vertical Reference Pt	CYCLONE 37 (28'KB) (RKB)	CYCLONE 37 (28'KB) (RKB) to Ground Level at Slot (SLOT#05 HFE 7 (1125'FSL & 1047'FWL, SEC.22))	4946.00ft
MD Reference Pt	CYCLONE 37 (28'KB) (RKB)	Section Origin	N 0.00, E 0.00 ft
Field Vertical Reference	Mean Sea Level	Section Azimuth	82.34°



# Actual Wellpath Report

HFE 7 AWP

Page 2 of 7



## REFERENCE WELLPATH IDENTIFICATION

Operator	EXTRACTION OIL & GAS	Slot	SLOT#05 HFE 7 (1125'FSL & 1047'FWL, SEC.22)
Area	COLORADO	Well	HFE 7
Field	WELD COUNTY (NAD83/TRUE NORTH)	Wellbore	HFE 7 AWB
Facility	SEC.22-T04N-R68W		

## WELLPATH DATA (108 stations)

MD [ft]	Inclination [°]	Azimuth [°]	TVD [ft]	Vert Sect [ft]	North [ft]	East [ft]	Latitude	Longitude	DLS [°/100ft]	Comments
1547.00	0.790	260.310	1546.72	-2.93	5.57	-3.70	40°17'41.058°N	104°59'42.069°W	0.31	TIED TO SURFACE SURVEYS
1657.00	1.190	271.570	1656.70	-4.81	5.47	-5.59	40°17'41.057°N	104°59'42.094°W	0.40	BAKER DRILLED USING THIRD PARTY MWD- FIRST SURVEY
1752.00	1.020	6.980	1751.69	-5.57	6.34	-6.47	40°17'41.065°N	104°59'42.105°W	1.72	
1846.00	1.410	3.890	1845.67	-5.13	8.32	-6.29	40°17'41.085°N	104°59'42.103°W	0.42	
1941.00	0.310	27.790	1940.66	-4.75	9.71	-6.09	40°17'41.099°N	104°59'42.100°W	1.19	
2035.00	0.400	46.610	2034.66	-4.33	10.17	-5.74	40°17'41.103°N	104°59'42.096°W	0.16	
2130.00	0.220	341.770	2129.66	-4.10	10.57	-5.55	40°17'41.107°N	104°59'42.093°W	0.38	
2224.00	0.310	326.300	2223.66	-4.24	10.95	-5.75	40°17'41.111°N	104°59'42.096°W	0.12	
2319.00	2.920	279.990	2318.61	-6.66	11.58	-8.28	40°17'41.117°N	104°59'42.128°W	2.86	
2414.00	4.680	271.880	2413.40	-12.79	12.13	-14.53	40°17'41.123°N	104°59'42.209°W	1.93	
2509.00	6.100	290.700	2507.98	-21.05	14.04	-23.13	40°17'41.142°N	104°59'42.320°W	2.37	
2603.00	8.090	294.310	2601.26	-31.06	18.53	-33.83	40°17'41.186°N	104°59'42.458°W	2.17	
2697.00	9.010	287.390	2694.22	-43.34	23.45	-46.88	40°17'41.235°N	104°59'42.627°W	1.47	
2792.00	11.710	286.780	2787.66	-58.86	28.46	-63.22	40°17'41.284°N	104°59'42.837°W	2.84	
2886.00	13.390	287.790	2879.41	-77.37	34.54	-82.71	40°17'41.344°N	104°59'43.089°W	1.80	
2981.00	14.720	288.980	2971.56	-98.09	41.83	-104.60	40°17'41.416°N	104°59'43.372°W	1.43	
3076.00	17.280	287.080	3062.88	-121.70	49.90	-129.51	40°17'41.496°N	104°59'43.693°W	2.75	
3170.00	20.020	287.390	3151.93	-148.96	58.81	-158.21	40°17'41.584°N	104°59'44.063°W	2.92	
3264.00	22.090	285.810	3239.65	-179.76	68.43	-190.58	40°17'41.679°N	104°59'44.481°W	2.28	
3359.00	24.610	294.400	3326.89	-212.92	81.48	-225.79	40°17'41.808°N	104°59'44.936°W	4.45	
3454.00	29.210	294.490	3411.58	-249.33	99.27	-264.93	40°17'41.984°N	104°59'45.441°W	4.84	
3548.00	28.680	294.090	3493.84	-287.93	117.98	-306.39	40°17'42.169°N	104°59'45.976°W	0.60	
3737.00	25.590	294.490	3662.02	-361.07	153.42	-384.96	40°17'42.519°N	104°59'46.990°W	1.64	
3832.00	23.200	296.070	3748.53	-394.01	170.16	-420.44	40°17'42.684°N	104°59'47.448°W	2.61	
3926.00	24.390	291.980	3834.54	-426.28	185.56	-455.07	40°17'42.836°N	104°59'47.895°W	2.16	
4020.00	22.800	289.110	3920.69	-459.42	198.79	-490.28	40°17'42.967°N	104°59'48.349°W	2.09	
4115.00	26.910	285.810	4006.87	-495.59	210.67	-528.38	40°17'43.085°N	104°59'48.841°W	4.56	
4210.00	26.290	286.200	4091.82	-534.55	222.40	-569.27	40°17'43.200°N	104°59'49.368°W	0.68	
4304.00	23.820	287.570	4176.97	-570.76	233.94	-607.36	40°17'43.314°N	104°59'49.860°W	2.70	
4399.00	25.500	281.090	4263.31	-607.49	243.67	-645.73	40°17'43.411°N	104°59'50.355°W	3.35	



# Actual Wellpath Report

HFE 7 AWP

Page 3 of 7



## REFERENCE WELLPATH IDENTIFICATION

Operator	EXTRACTION OIL & GAS	Slot	SLOT#05 HFE 7 (1125'FSL & 1047'FWL, SEC.22)
Area	COLORADO	Well	HFE 7
Field	WELD COUNTY (NAD83/TRUE NORTH)	Wellbore	HFE 7 AWB
Facility	SEC.22-T04N-R68W		

## WELLPATH DATA (108 stations) † = interpolated/extrapolated station

MD [ft]	Inclination [°]	Azimuth [°]	TVD [ft]	Vert Sect [ft]	North [ft]	East [ft]	Latitude	Longitude	DLS [°/100ft]	Comments
4494.00	25.900	282.990	4348.92	-646.27	252.27	-686.01	40°17'43.496"N	104°59'50.875"W	0.96	
4588.00	24.610	282.590	4433.93	-683.85	261.15	-725.12	40°17'43.583"N	104°59'51.380"W	1.38	
4683.00	28.500	279.680	4518.90	-724.06	269.27	-766.79	40°17'43.664"N	104°59'51.917"W	4.32	
4777.00	27.220	281.180	4602.00	-765.81	277.21	-809.99	40°17'43.742"N	104°59'52.475"W	1.55	
4872.00	23.990	281.800	4687.66	-804.60	285.38	-850.22	40°17'43.823"N	104°59'52.994"W	3.41	
4967.00	21.610	285.280	4775.23	-838.92	293.94	-886.00	40°17'43.907"N	104°59'53.456"W	2.88	
5061.00	19.490	287.390	4863.25	-869.07	303.19	-917.67	40°17'43.999"N	104°59'53.865"W	2.39	
5156.00	17.500	289.290	4953.34	-896.16	312.64	-946.28	40°17'44.092"N	104°59'54.234"W	2.19	
5250.00	16.000	291.890	5043.35	-920.04	322.14	-971.64	40°17'44.186"N	104°59'54.561"W	1.78	
5345.00	14.720	295.500	5134.96	-941.53	332.22	-994.68	40°17'44.286"N	104°59'54.858"W	1.68	
5439.00	13.920	297.970	5226.04	-960.72	342.67	-1015.45	40°17'44.389"N	104°59'55.126"W	1.07	
5534.00	13.520	296.470	5318.32	-979.20	352.98	-1035.48	40°17'44.491"N	104°59'55.385"W	0.56	
5628.00	12.990	300.170	5409.82	-996.64	363.18	-1054.45	40°17'44.591"N	104°59'55.630"W	1.06	
5723.00	11.890	303.170	5502.59	-1012.48	373.90	-1071.87	40°17'44.697"N	104°59'55.855"W	1.34	
5817.00	11.890	304.090	5594.57	-1027.03	384.63	-1088.00	40°17'44.803"N	104°59'56.063"W	0.20	
5912.00	11.710	306.690	5687.57	-1041.23	395.87	-1103.84	40°17'44.915"N	104°59'56.267"W	0.59	
6126.00	10.520	305.900	5897.55	-1070.91	420.31	-1137.08	40°17'45.156"N	104°59'56.696"W	0.56	
6220.00	7.110	308.900	5990.43	-1081.13	428.99	-1148.56	40°17'45.242"N	104°59'56.844"W	3.66	
6314.00	0.710	284.400	6084.16	-1085.68	432.80	-1153.65	40°17'45.279"N	104°59'56.910"W	6.88	
6409.00	4.910	80.100	6179.06	-1082.16	433.64	-1150.22	40°17'45.288"N	104°59'56.866"W	5.86	
6503.00	9.990	74.370	6272.23	-1070.06	436.53	-1138.39	40°17'45.316"N	104°59'56.713"W	5.46	
6598.00	16.220	79.700	6364.72	-1048.62	441.13	-1117.38	40°17'45.362"N	104°59'56.442"W	6.67	
6692.00	25.010	82.300	6452.61	-1015.57	446.15	-1084.71	40°17'45.411"N	104°59'56.020"W	9.40	
6787.00	35.000	84.770	6534.78	-968.15	451.34	-1037.56	40°17'45.463"N	104°59'55.412"W	10.59	
6881.00	44.590	89.090	6606.94	-908.29	454.33	-977.57	40°17'45.492"N	104°59'54.638"W	10.61	
6976.00	52.720	89.570	6669.64	-837.57	455.14	-906.31	40°17'45.500"N	104°59'53.718"W	8.57	
7070.00	60.800	90.280	6721.12	-759.70	455.22	-827.76	40°17'45.501"N	104°59'52.704"W	8.62	
7165.00	67.790	93.190	6762.31	-675.33	452.57	-742.27	40°17'45.475"N	104°59'51.601"W	7.86	
7260.00	71.320	93.190	6795.49	-587.92	447.61	-653.40	40°17'45.426"N	104°59'50.454"W	3.72	
7330.00†	73.917	91.477	6816.40	-522.13	444.90	-586.66	40°17'45.399"N	104°59'49.593"W	4.38	CROSSED 460 SETBACK (1570' FSL & 460' FWL, SEC. 22)

## REFERENCE WELLPATH IDENTIFICATION

Operator	EXTRACTION OIL & GAS	Slot	SLOT#05 HFE 7 (1125'FSL & 1047'FWL, SEC.22)
Area	COLORADO	Well	HFE 7
Field	WELD COUNTY (NAD83/TRUE NORTH)	Wellbore	HFE 7 AWB
Facility	SEC.22-T04N-R68W		

## WELLPATH DATA (108 stations)

MD [ft]	Inclination [°]	Azimuth [°]	TVD [ft]	Vert Sect [ft]	North [ft]	East [ft]	Latitude	Longitude	DLS [°/100ft]	Comments
7354.00	74.810	90.900	6822.87	-499.30	444.42	-563.56	40°17'45.394"N	104°59'49.295"W	4.38	
7449.00	79.890	88.470	6843.67	-407.40	444.95	-470.90	40°17'45.400"N	104°59'48.099"W	5.90	
7543.00	87.580	89.090	6853.92	-314.62	446.94	-377.55	40°17'45.419"N	104°59'46.894"W	8.21	
7638.00	87.100	87.590	6858.33	-220.24	449.68	-282.70	40°17'45.446"N	104°59'45.670"W	1.66	
7732.00	86.390	87.810	6863.67	-126.81	453.45	-188.93	40°17'45.484"N	104°59'44.460"W	0.79	
7827.00	85.990	88.780	6869.98	-32.53	456.27	-94.18	40°17'45.512"N	104°59'43.237"W	1.10	
7922.00	87.320	89.790	6875.52	61.61	457.45	0.65	40°17'45.523"N	104°59'42.013"W	1.76	
8017.00	87.190	89.790	6880.07	155.70	457.80	95.54	40°17'45.527"N	104°59'40.789"W	0.14	
8112.00	87.410	90.190	6884.55	249.75	457.82	190.43	40°17'45.527"N	104°59'39.564"W	0.48	
8207.00	87.320	90.100	6888.91	343.77	457.58	285.33	40°17'45.524"N	104°59'38.339"W	0.13	
8301.00	87.410	89.570	6893.24	436.87	457.85	379.23	40°17'45.527"N	104°59'37.127"W	0.57	
8395.00	87.010	89.490	6897.81	530.02	458.62	473.12	40°17'45.535"N	104°59'35.916"W	0.43	
8490.00	86.610	89.090	6903.10	624.17	459.79	567.96	40°17'45.546"N	104°59'34.692"W	0.59	
8584.00	89.000	89.880	6906.70	717.37	460.64	661.88	40°17'45.555"N	104°59'33.480"W	2.68	
8679.00	89.090	90.680	6908.28	811.44	460.17	756.86	40°17'45.550"N	104°59'32.254"W	0.85	
8773.00	88.820	89.710	6910.00	904.55	459.85	850.85	40°17'45.547"N	104°59'31.041"W	1.07	
8868.00	88.910	88.600	6911.88	998.85	461.25	945.82	40°17'45.561"N	104°59'29.815"W	1.17	
8963.00	89.090	86.890	6913.54	1093.41	464.99	1040.73	40°17'45.598"N	104°59'28.590"W	1.81	
9058.00	88.820	89.310	6915.27	1187.91	468.14	1135.65	40°17'45.629"N	104°59'27.365"W	2.56	
9152.00	89.000	87.810	6917.06	1281.34	470.50	1229.60	40°17'45.652"N	104°59'26.153"W	1.61	
9247.00	89.090	89.880	6918.64	1375.71	472.42	1324.56	40°17'45.671"N	104°59'24.927"W	2.18	
9341.00	88.380	91.070	6920.72	1468.74	471.64	1418.53	40°17'45.663"N	104°59'23.715"W	1.47	
9436.00	88.600	92.480	6923.22	1562.42	468.70	1513.45	40°17'45.634"N	104°59'22.490"W	1.50	
9531.00	88.510	93.800	6925.61	1655.70	463.49	1608.28	40°17'45.582"N	104°59'21.266"W	1.39	
9625.00	88.910	90.900	6927.73	1748.24	459.64	1702.17	40°17'45.544"N	104°59'20.054"W	3.11	
9720.00	88.510	89.570	6929.87	1842.31	459.25	1797.14	40°17'45.540"N	104°59'18.829"W	1.46	
9814.00	88.820	89.000	6932.06	1935.60	460.42	1891.11	40°17'45.552"N	104°59'17.616"W	0.69	
9909.00	88.380	88.690	6934.38	2029.96	462.34	1986.06	40°17'45.571"N	104°59'16.390"W	0.57	
10003.00	88.110	88.300	6937.26	2123.37	464.81	2079.98	40°17'45.595"N	104°59'15.178"W	0.50	
10098.00	88.110	87.900	6940.39	2217.84	467.95	2174.88	40°17'45.626"N	104°59'13.954"W	0.42	



# Actual Wellpath Report

HFE 7 AWP

Page 5 of 7



REFERENCE WELLPATH IDENTIFICATION			
Operator	EXTRACTION OIL & GAS	Slot	SLOT#05 HFE 7 (1125'FSL & 1047'FWL, SEC.22)
Area	COLORADO	Well	HFE 7
Field	WELD COUNTY (NAD83/TRUE NORTH)	Wellbore	HFE 7 AWP
Facility	SEC.22-T04N-R68W		

WELLPATH DATA (108 stations)										
MD [ft]	Inclination [°]	Azimuth [°]	TVD [ft]	Vert Sect [ft]	North [ft]	East [ft]	Latitude	Longitude	DLS "/100ft	Comments
10193.00	89.480	89.310	6942.39	2312.25	470.27	2269.82	40°17'45.649"N	104°59'12.728"W	2.07	
10288.00	89.790	88.870	6943.00	2406.59	471.78	2364.81	40°17'45.664"N	104°59'11.502"W	0.57	
10382.00	89.700	88.300	6943.41	2500.03	474.10	2458.78	40°17'45.687"N	104°59'10.290"W	0.61	
10477.00	89.790	87.810	6943.84	2594.56	477.32	2553.72	40°17'45.718"N	104°59'09.064"W	0.52	
10571.00	89.880	87.110	6944.11	2688.18	481.49	2647.63	40°17'45.759"N	104°59'07.853"W	0.75	
10666.00	89.700	86.580	6944.46	2782.89	486.72	2742.48	40°17'45.811"N	104°59'06.628"W	0.59	
10761.00	90.280	86.180	6944.47	2877.65	492.71	2837.29	40°17'45.870"N	104°59'05.405"W	0.74	
10855.00	89.220	87.680	6944.88	2971.34	497.75	2931.15	40°17'45.920"N	104°59'04.193"W	1.95	
10950.00	89.090	87.370	6946.28	3065.94	501.85	3026.05	40°17'45.960"N	104°59'02.969"W	0.35	
11044.00	90.280	89.790	6946.80	3159.38	504.18	3120.02	40°17'45.983"N	104°59'01.756"W	2.87	
11139.00	90.720	90.190	6945.97	3253.53	504.20	3215.01	40°17'45.983"N	104°59'00.530"W	0.63	
11234.00	89.880	89.490	6945.47	3347.71	504.46	3310.01	40°17'45.986"N	104°58'59.304"W	1.15	
11328.00	90.190	89.710	6945.42	3440.96	505.12	3404.01	40°17'45.992"N	104°58'58.091"W	0.40	
11423.00	89.880	88.080	6945.36	3535.33	506.95	3498.99	40°17'46.010"N	104°58'56.865"W	1.75	
11517.00	90.190	86.090	6945.30	3629.01	511.73	3592.86	40°17'46.057"N	104°58'55.654"W	2.14	
11612.00	89.700	84.770	6945.39	3723.87	519.30	3687.55	40°17'46.132"N	104°58'54.432"W	1.48	
11640.00	89.310	84.500	6945.63	3751.84	521.92	3715.43	40°17'46.158"N	104°58'54.072"W	1.69	BAKER DRILLED USING THIRD PARTY MWD- LAST SURVEY (1560' FSL & 548' FEL, SEC. 22)
11707.00	89.310	84.500	6946.44	3818.79	528.34	3782.12	40°17'46.221"N	104°58'53.211"W	0.00	PROJECTION TO BIT (1567' FSL & 481' FEL, SEC. 22)

HOLE & CASING SECTIONS - Ref Wellbore: HFE 7 AWP      Ref Wellpath: HFE 7 AWP									
String/Diameter	Start MD [ft]	End MD [ft]	Interval [ft]	Start TVD [ft]	End TVD [ft]	Start N/S [ft]	Start E/W [ft]	End N/S [ft]	End E/W [ft]
9.625in Casing Surface	28.00	1595.00	1567.00	28.00	1594.72	-0.02	-0.01	5.49	-4.43
8.5in Open Hole	1595.00	11707.00	10112.00	1594.72	6946.44	5.49	-4.43	528.34	3782.12



# Actual Wellpath Report

HFE 7 AWP

Page 6 of 7



REFERENCE WELLPATH IDENTIFICATION			
Operator	EXTRACTION OIL & GAS	Slot	SLOT#05 HFE 7 (1125'FSL & 1047'FWL, SEC.22)
Area	COLORADO	Well	HFE 7
Field	WELD COUNTY (NAD83/TRUE NORTH)	Wellbore	HFE 7 AWB
Facility	SEC.22-T04N-R68W		

TARGETS								
Name	TVD [ft]	North [ft]	East [ft]	Grid East [US ft]	Grid North [US ft]	Latitude	Longitude	Shape
SEC.22-T04N-R68W	-2.00	-2.55	-112.14	3140751.59	1350606.64	40°17'40.978"N	104°59'43.469"W	polygon
HFE 7 BHL REV-1 (1550'FSL & 460'FEL, SEC.22)	6810.00	511.45	3803.21	3144663.78	1351142.91	40°17'46.054"N	104°58'52.939"W	point
HFE 7 LP REV-1 (1550'FSL & 460'FWL, SEC.22)	6810.00	411.29	-589.70	3140271.70	1351017.73	40°17'45.067"N	104°59'49.632"W	point
SEC.22-T04N-R68W (460'SETBACK)	6969.00	-2.55	-112.14	3140751.59	1350606.64	40°17'40.978"N	104°59'43.469"W	polygon
HFE 7 BHL (1550'FSL & 460'FEL, SEC.22)	6970.00	511.41	3803.20	3144663.76	1351142.87	40°17'46.054"N	104°58'52.939"W	point
HFE 7 LP (1550'FSL & 460'FWL, SEC.22)	6970.00	411.31	-589.70	3140271.70	1351017.75	40°17'45.067"N	104°59'49.632"W	point

WELLPATH COMPOSITION - Ref Wellbore: HFE 7 AWB      Ref Wellpath: HFE 7 AWP				
Start MD [ft]	End MD [ft]	Positional Uncertainty Model	Log Name/Comment	Wellbore
0.00	1547.00	ISCWSA MWD, Rev. 4 (Standard)	SURFACE SURVEYS PROVIDED BY EXTRACTION <21-1547>	HFE 7 AWB
1547.00	11640.00	ISCWSA MWD, Rev. 4 (Standard)	BAKER DRILLED USNG THIRD PARTY MWD <1657-11640>	HFE 7 AWB
11640.00	11707.00	Blind Drilling (std)	Projection to bit	HFE 7 AWB



# Actual Wellpath Report

HFE 7 AWP

Page 7 of 7



REFERENCE WELLPATH IDENTIFICATION			
Operator	EXTRACTION OIL & GAS	Slot	SLOT#05 HFE 7 (1125'FSL & 1047'FWL, SEC.22)
Area	COLORADO	Well	HFE 7
Field	WELD COUNTY (NAD83/TRUE NORTH)	Wellbore	HFE 7 AWB
Facility	SEC.22-T04N-R68W		

WELLPATH COMMENTS				
MD [ft]	Inclination [°]	Azimuth [°]	TVD [ft]	Comment
1547.00	0.790	260.310	1546.72	TIED TO SURFACE SURVEYS
1657.00	1.190	271.570	1656.70	BAKER DRILLED USING THIRD PARTY MWD- FIRST SURVEY
7330.00	73.917	91.477	6816.40	CROSSED 460 SETBACK (1570' FSL & 460' FWL, SEC. 22)
11640.00	89.310	84.500	6945.63	BAKER DRILLED USING THIRD PARTY MWD- LAST SURVEY (1560' FSL & 548' FEL, SEC. 22)
11707.00	89.310	84.500	6946.44	PROJECTION TO BIT (1567' FSL & 481' FEL, SEC. 22)