

OPERATOR: **Extraction Oil & Gas**

WELL NAME: **HFE 7**

FIELD NAME: DJ Basin - Wattenberg

DRILLING RIG: Cyclone 37

API #: 05-123-44773

LAT/LONG: 40.294723, -104.995006

SURFACE HOLE: SWSW S22-T4N-R68W, 1125' FSL, 1047' FWL

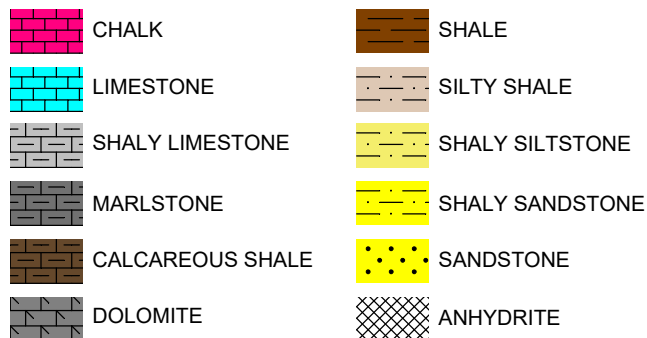
BOTTOM HOLE: S22-T4N-R68W, 1550' FSL, 460' FEL



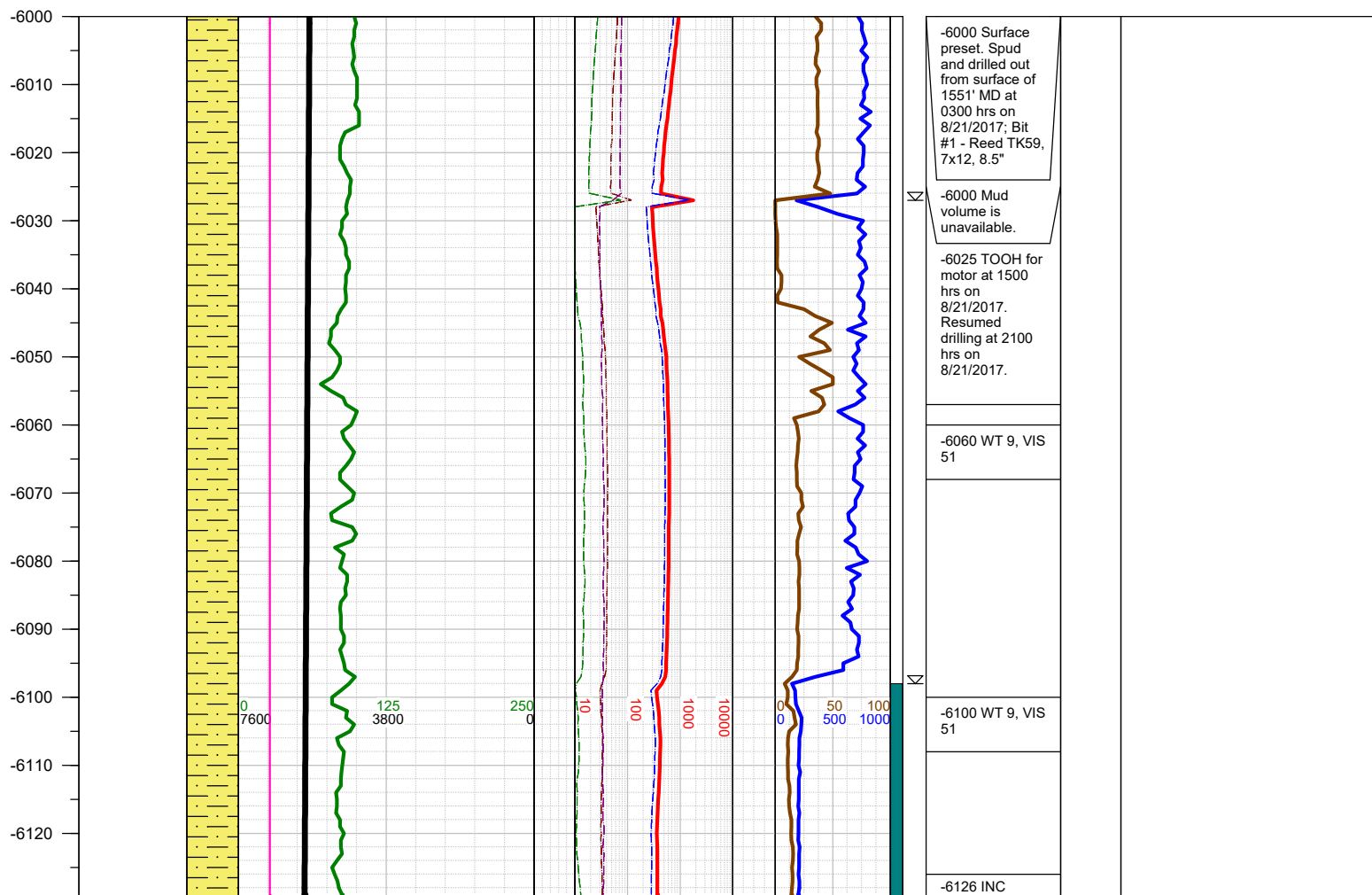
Earth Science Agency, LLC

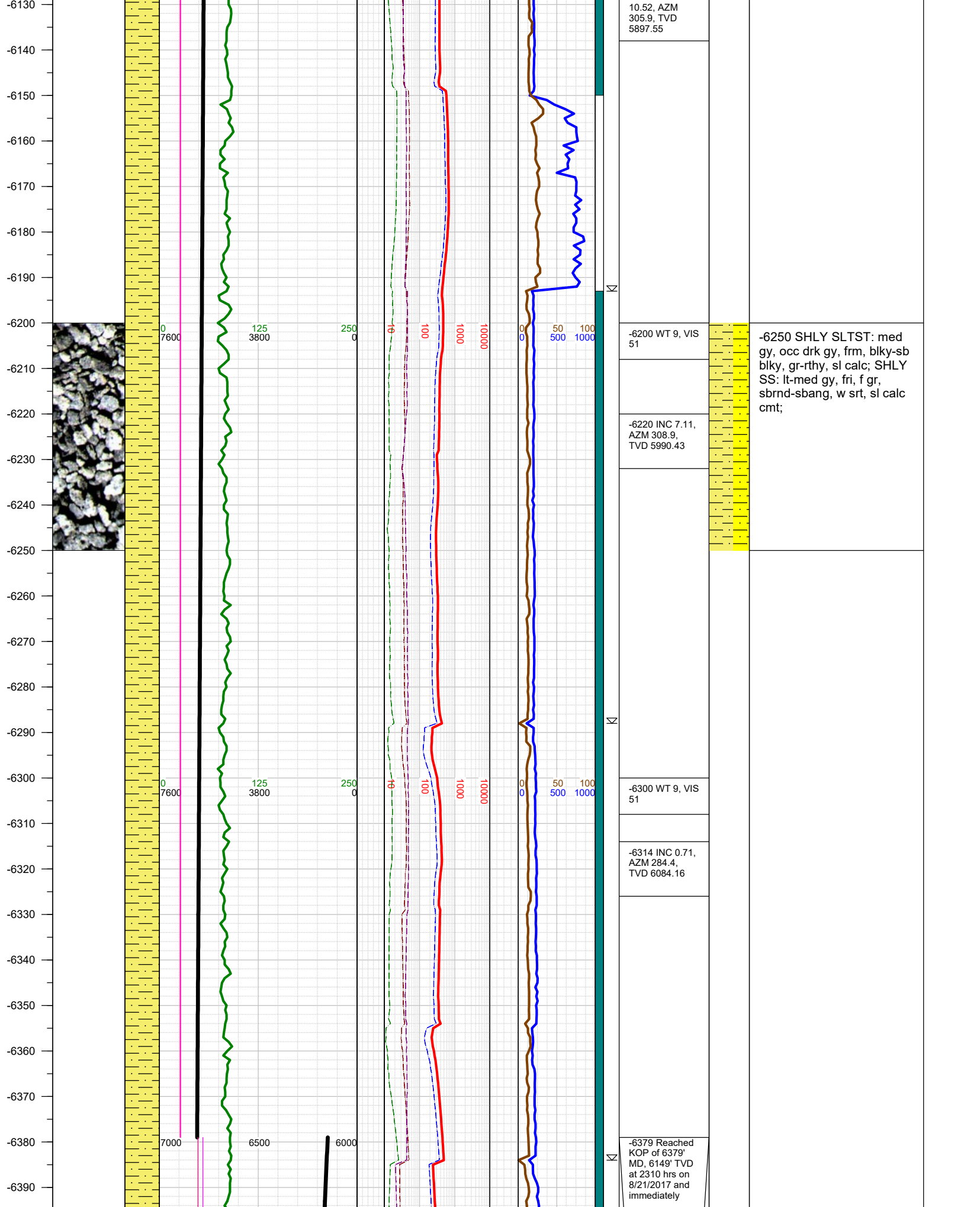
COUNTY: Weld  
STATE: Colorado  
GROUND ELEVATION: 4918'  
KELLY BUSHING: 4946'  
DRILLING FLUID: OBM  
TVD VS. MD: 6946' / 11707'  
SPUD DATE: August 21, 2017  
TD DATE: August 23, 2017  
  
DEPTHS LOGGED: 6000' - 11707'  
DATES LOGGED: August 21, 2017 - August 23, 2017  
GEOLOGISTS: Levi Hentzelman, Kyle Welty  
SCALE: 5" = 100'

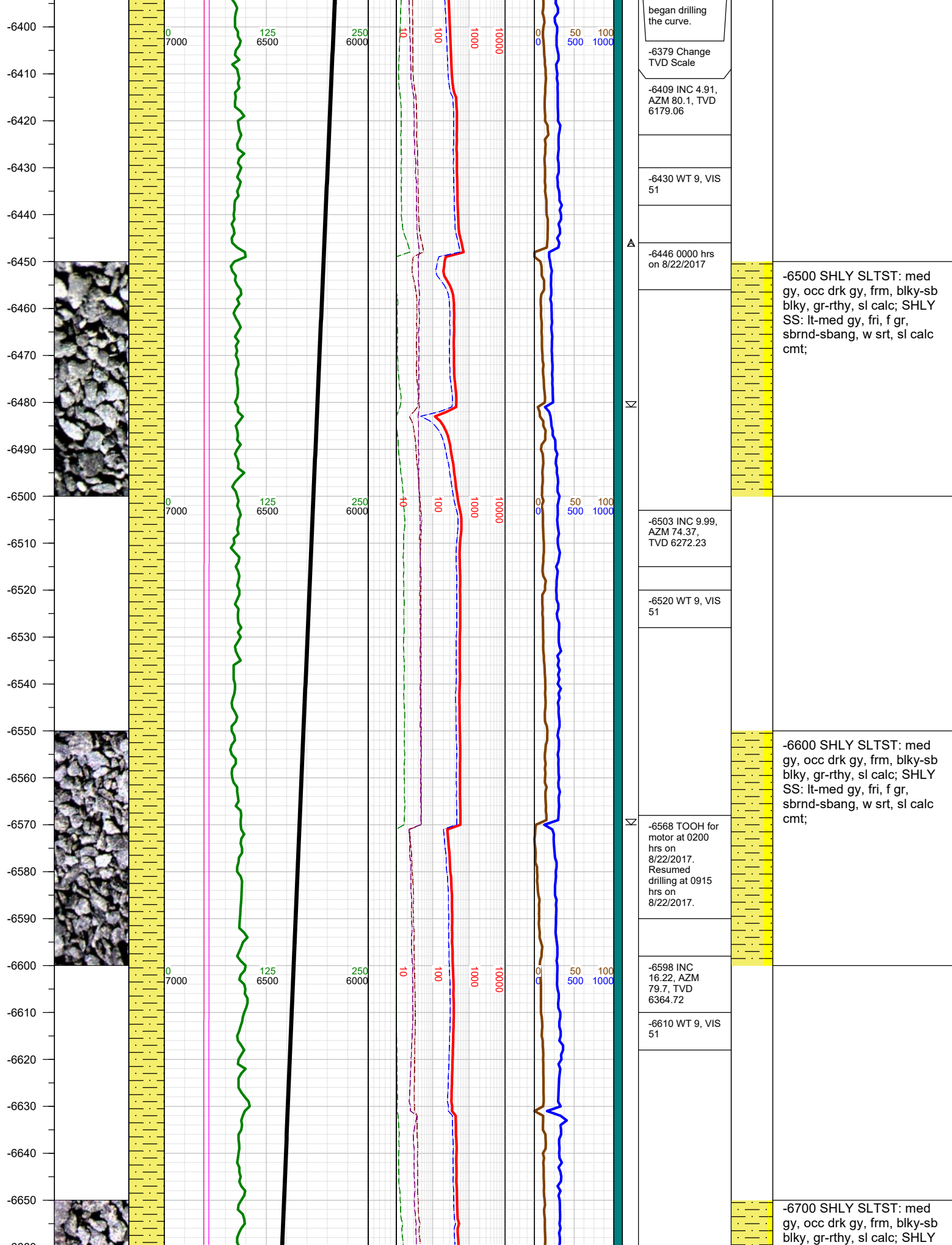
#### LEGEND



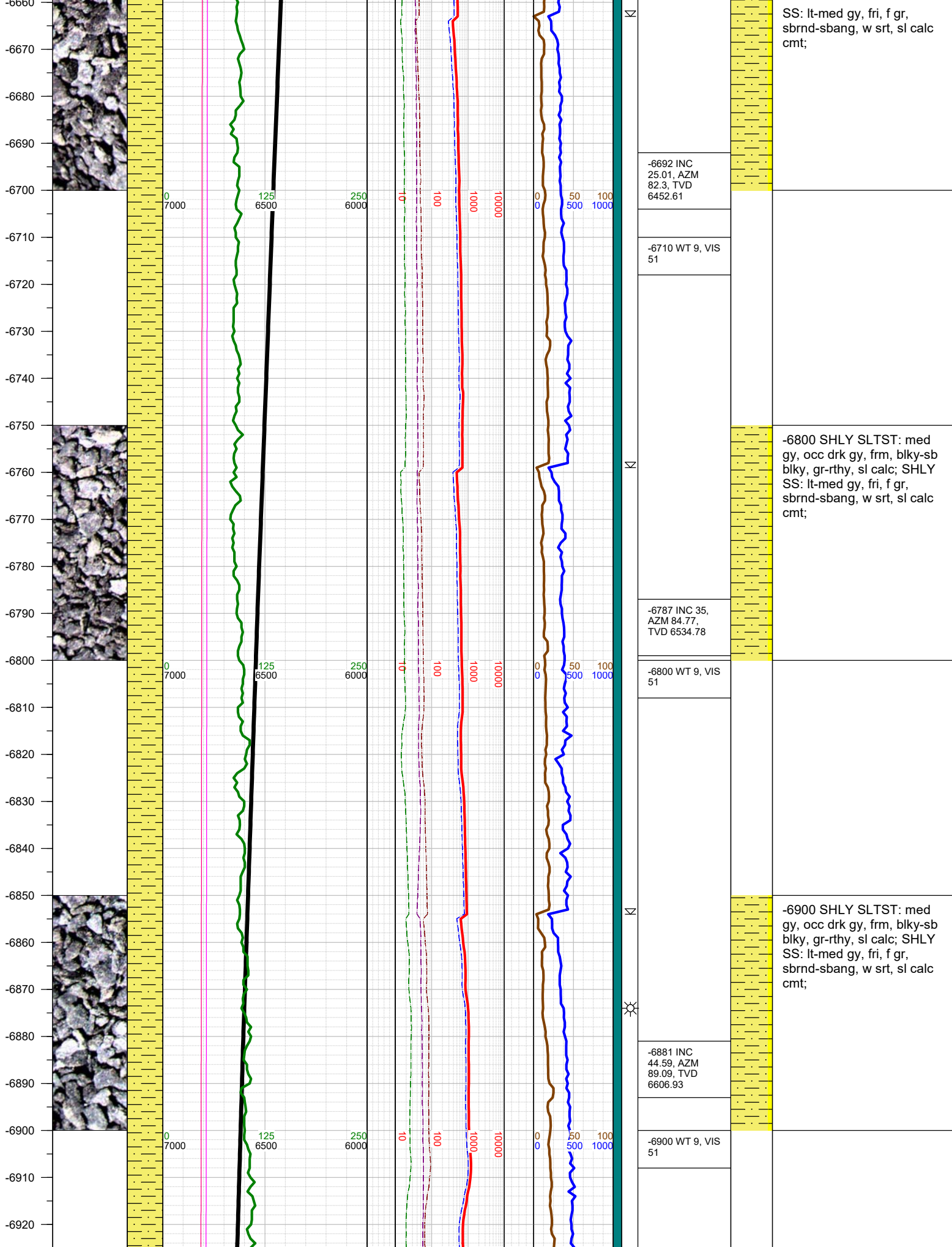
FORMATION  $\approx$  CONNECTION  $\Delta$  MIDNIGHT NEW BIT GAS SHOW FAULT

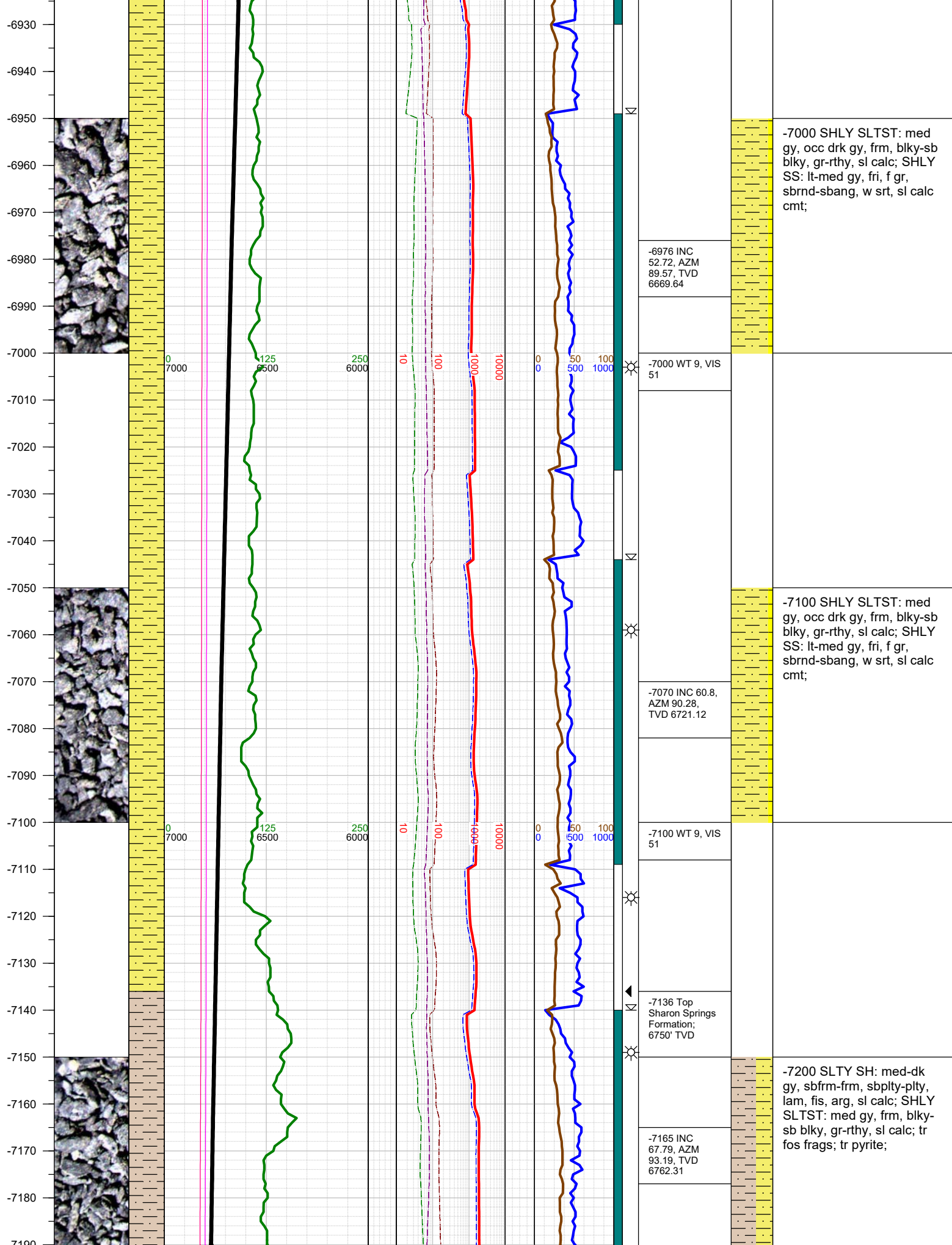


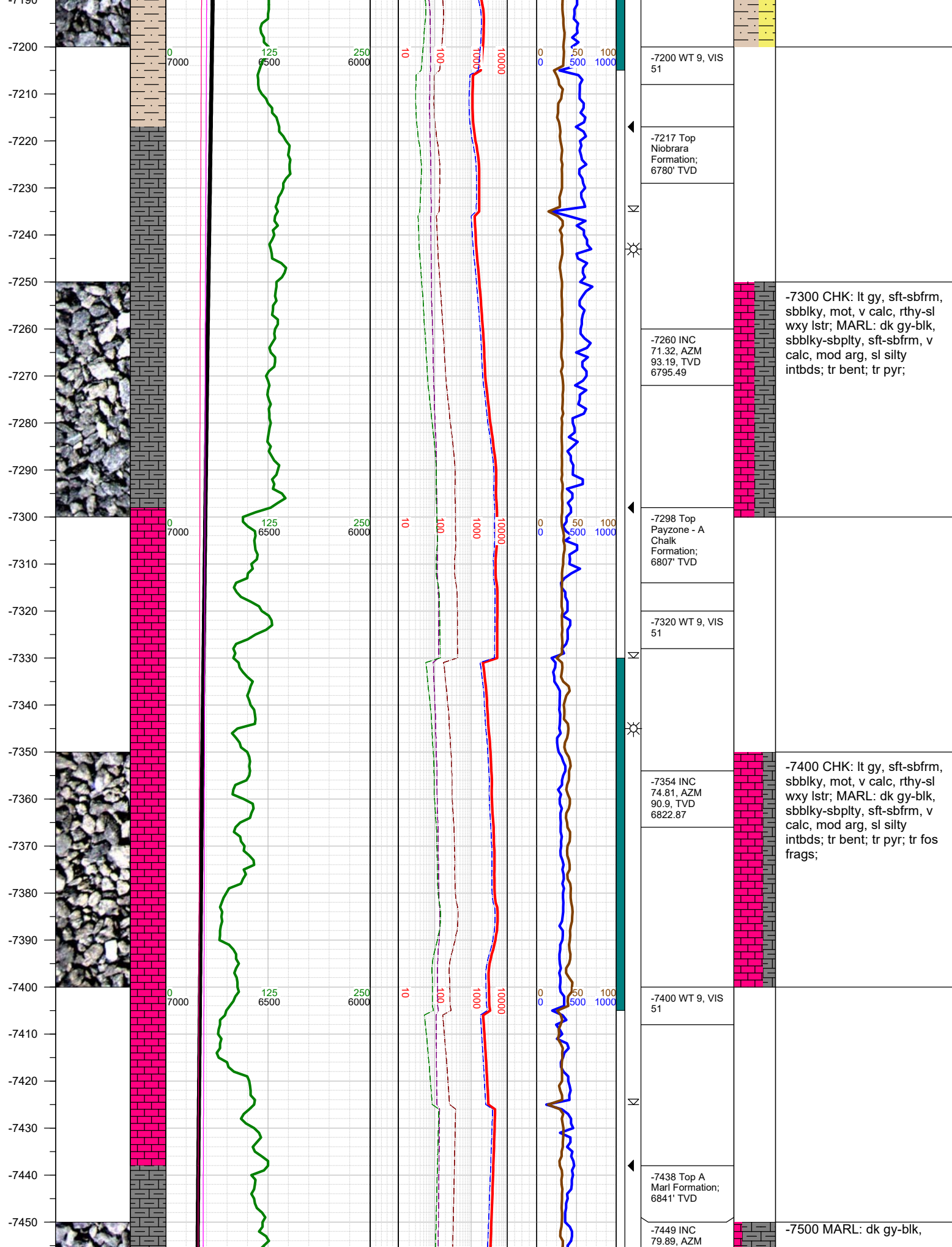




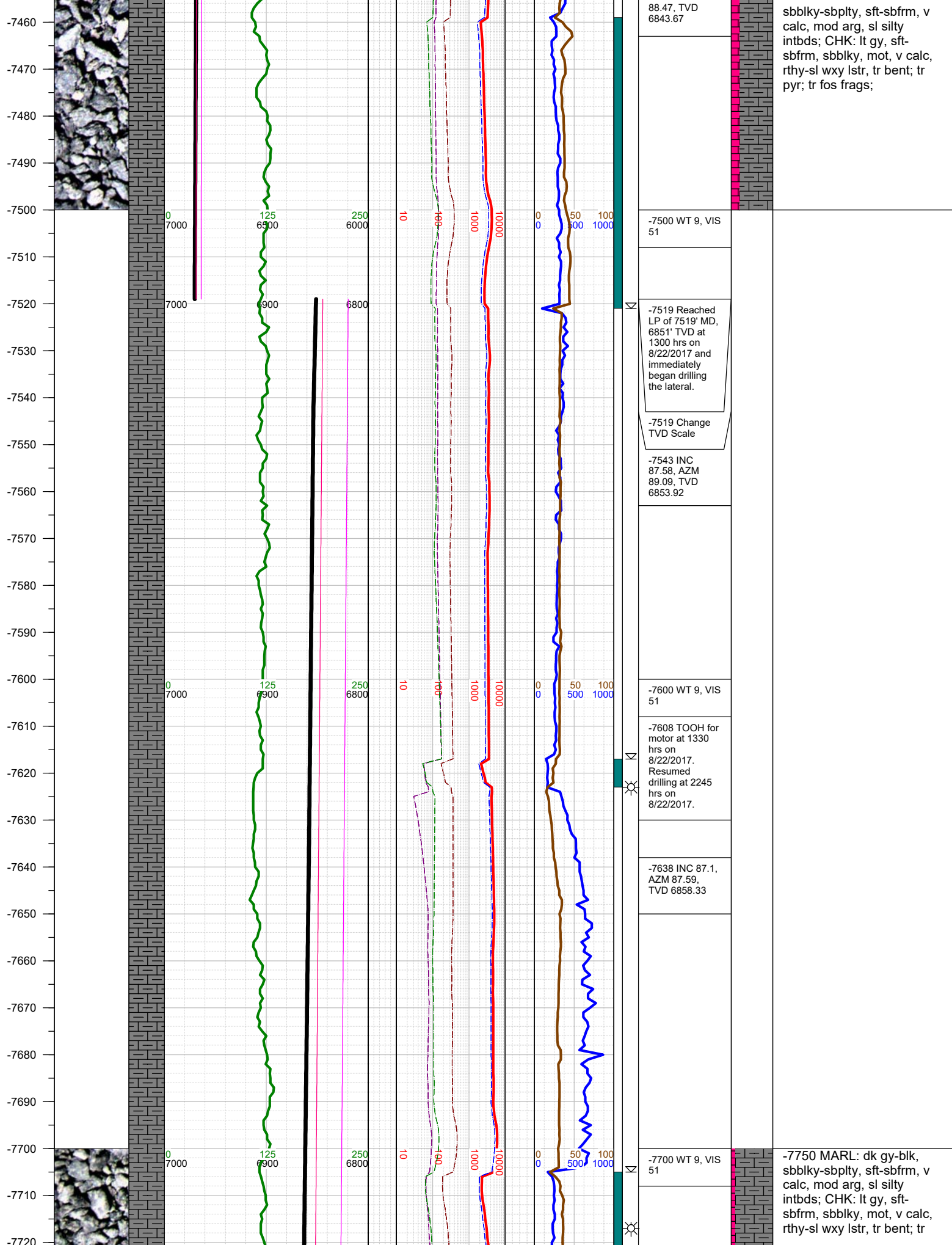


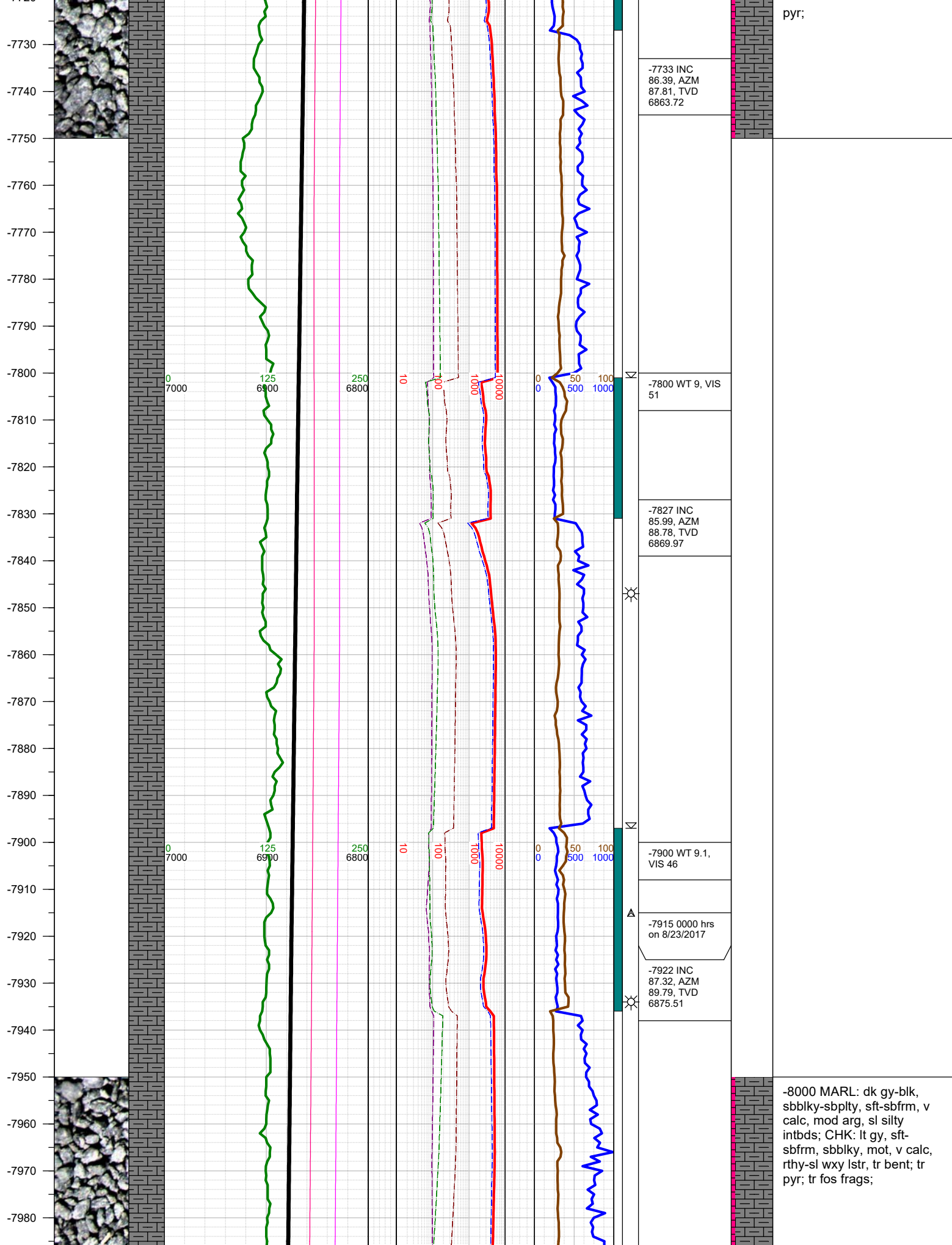




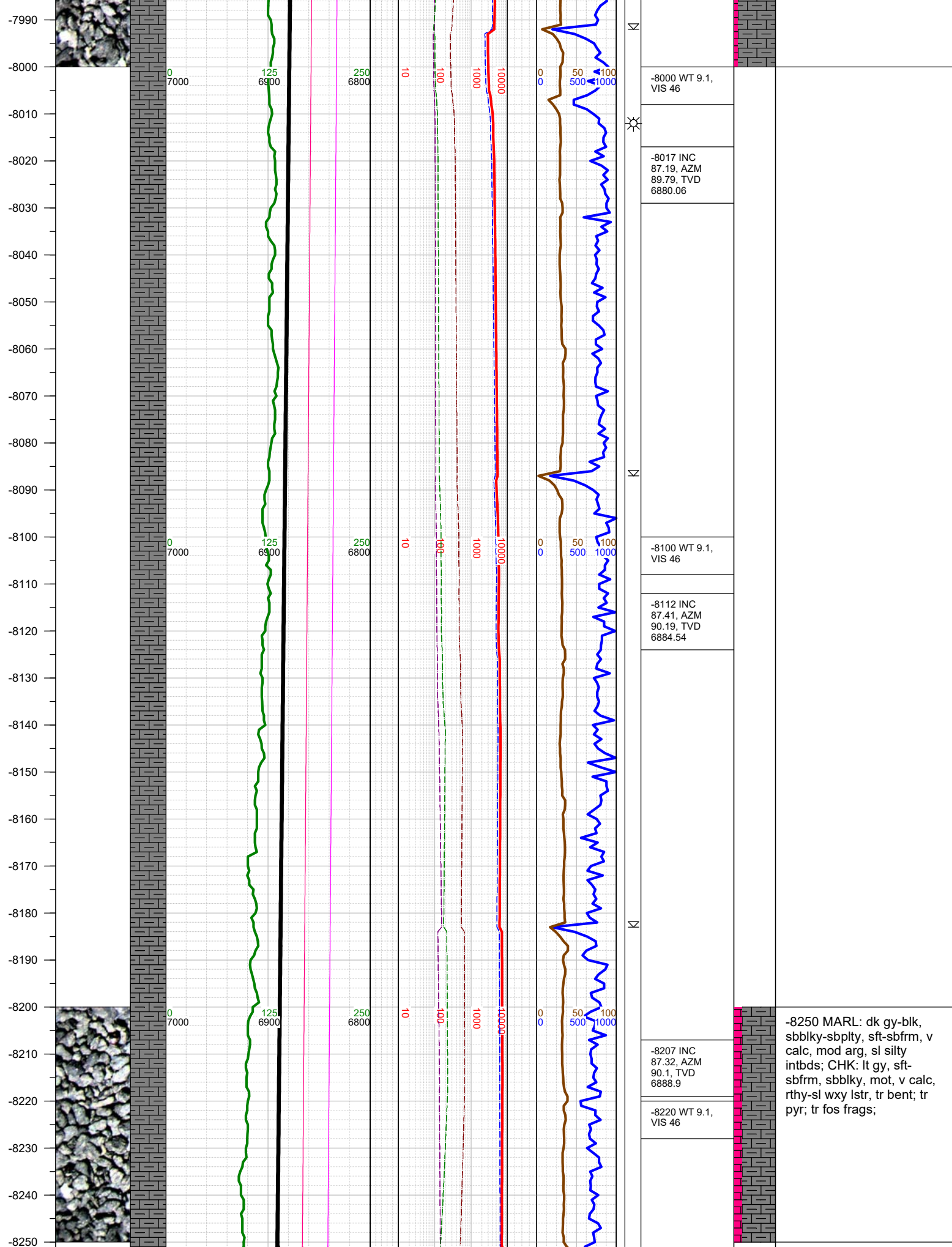


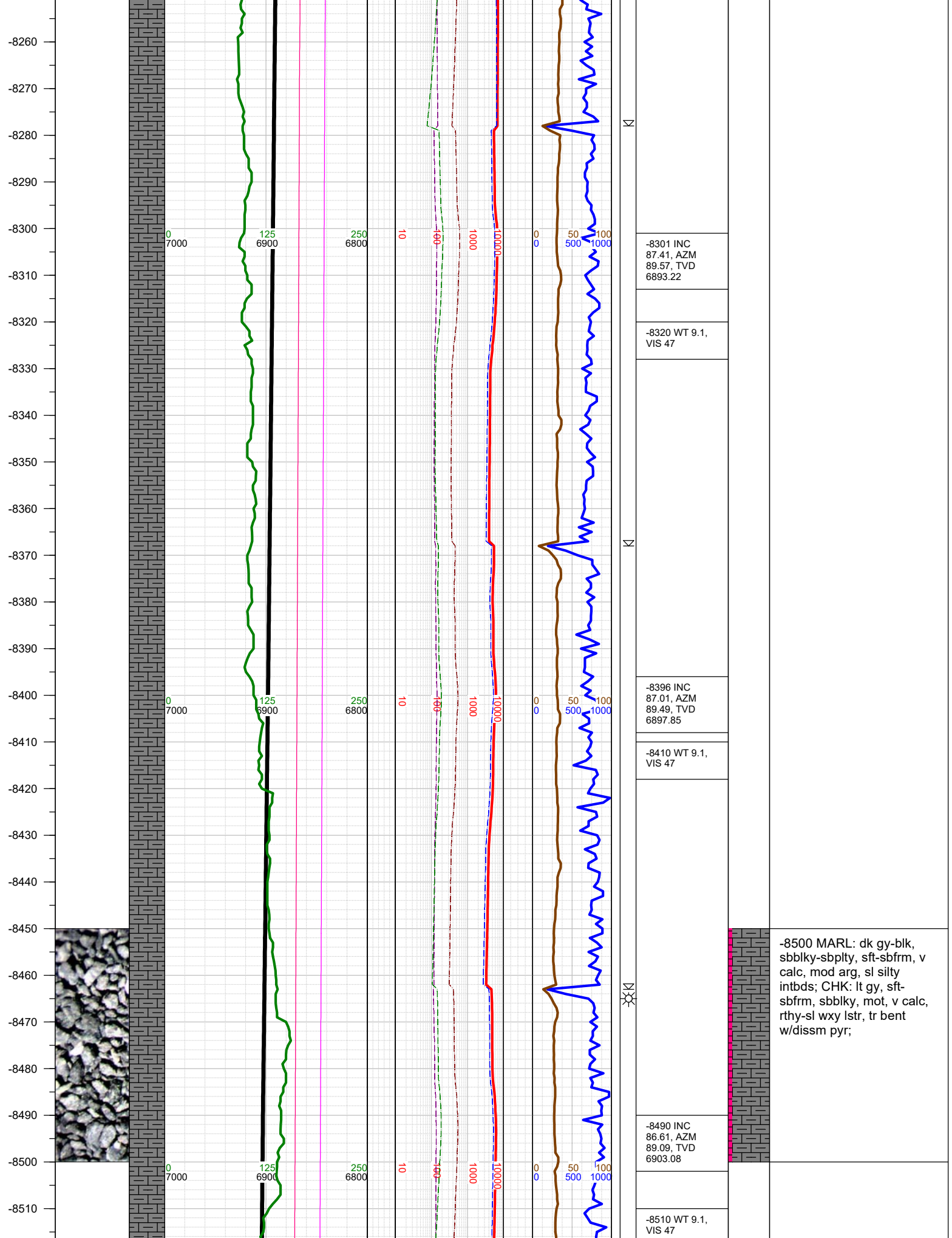


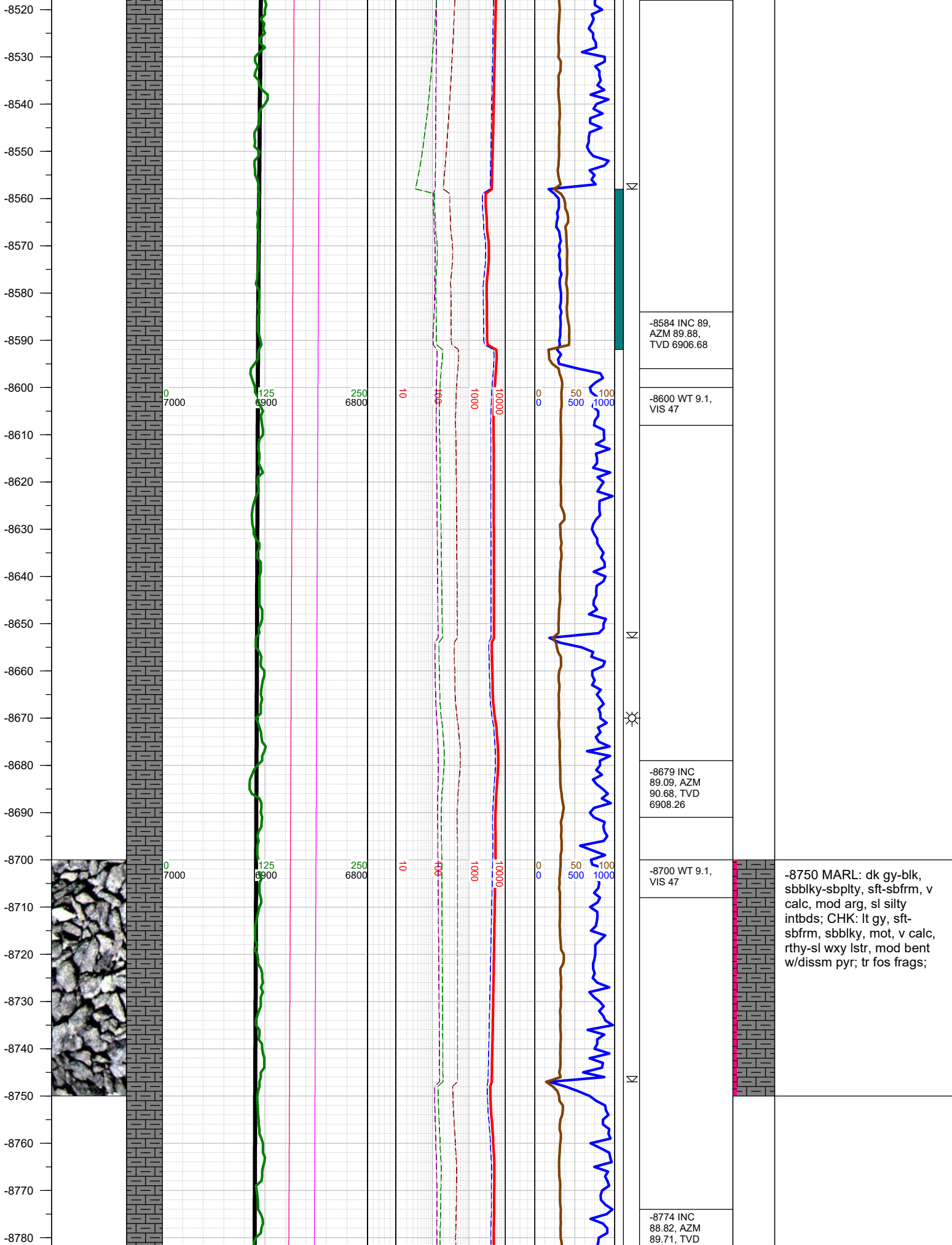




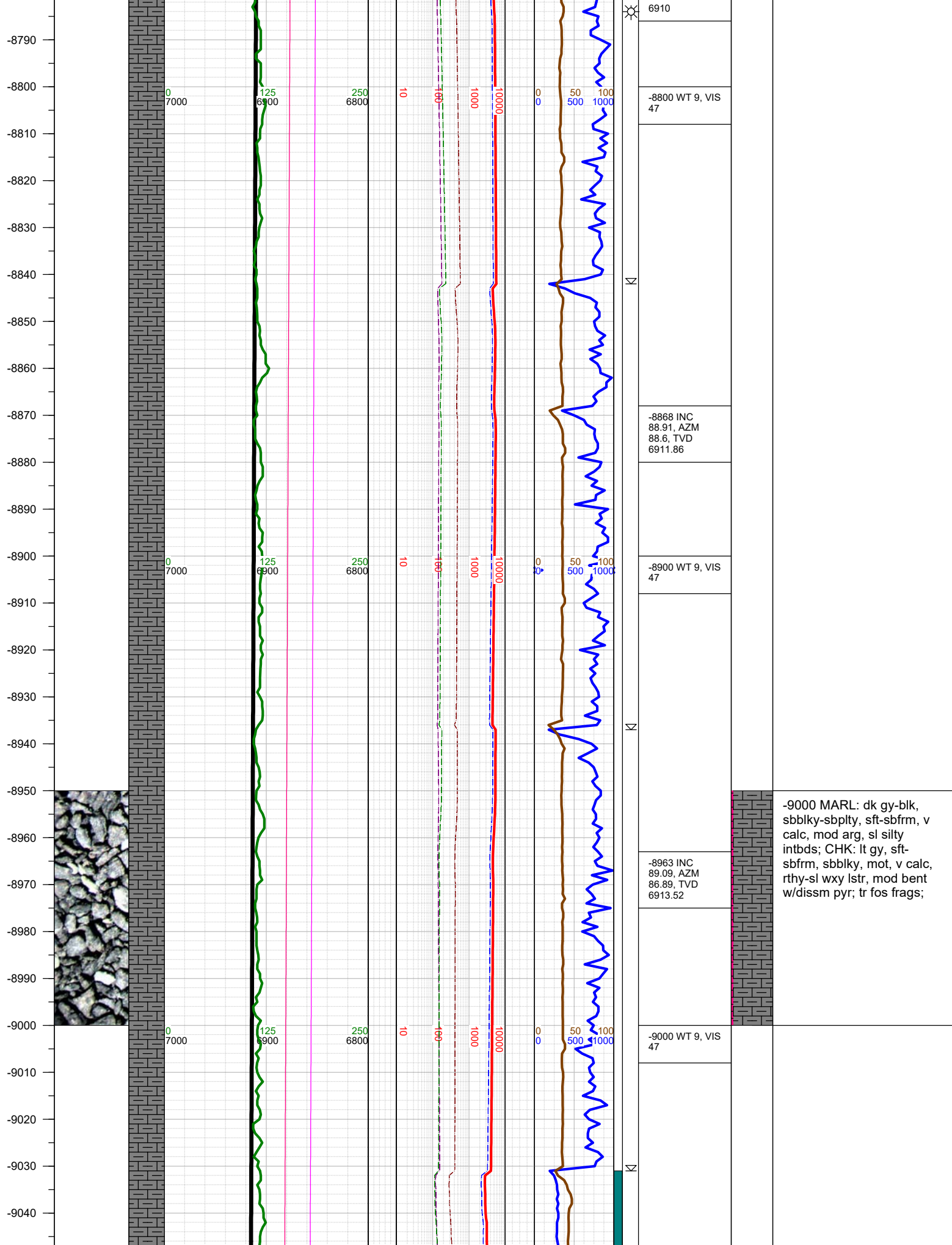


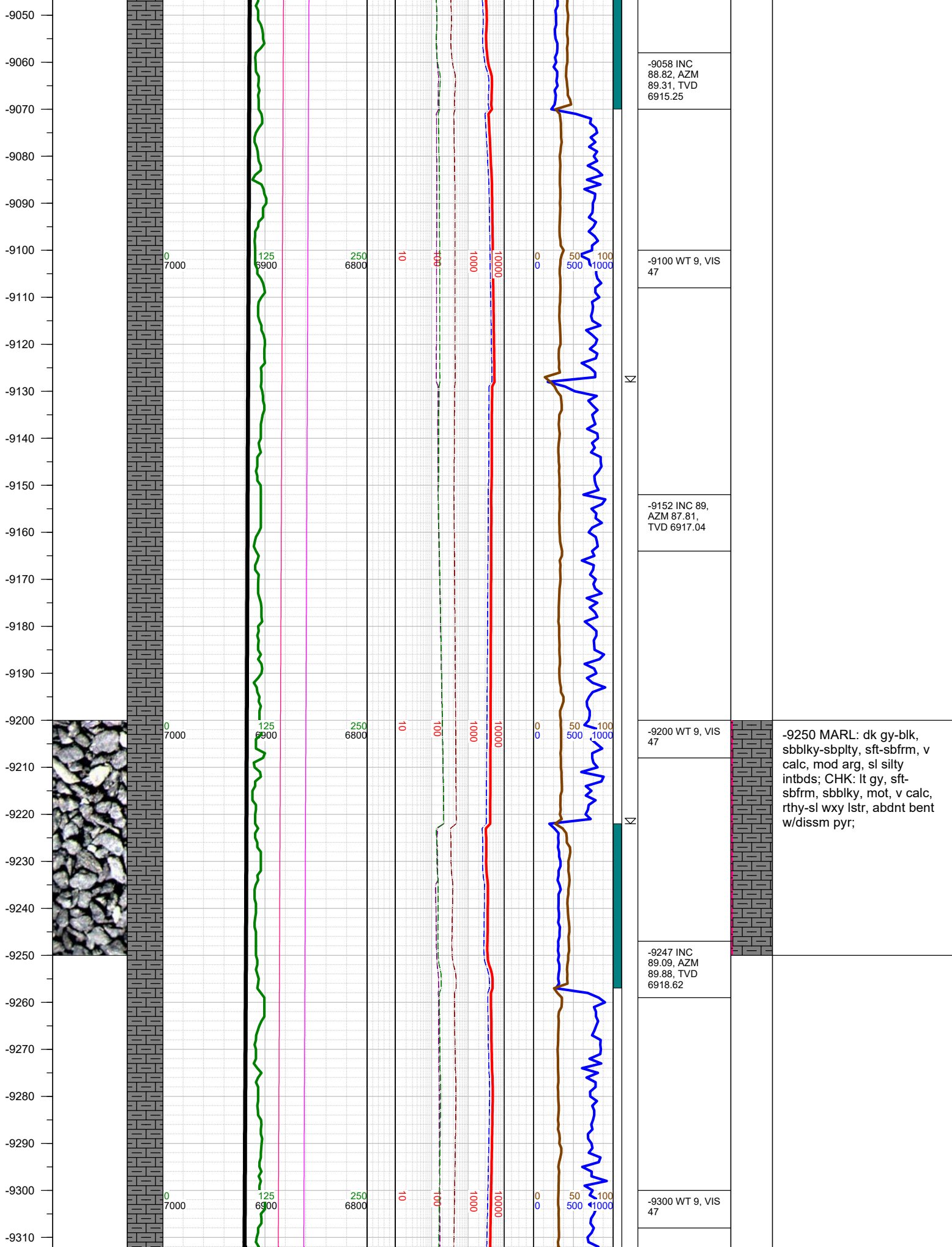


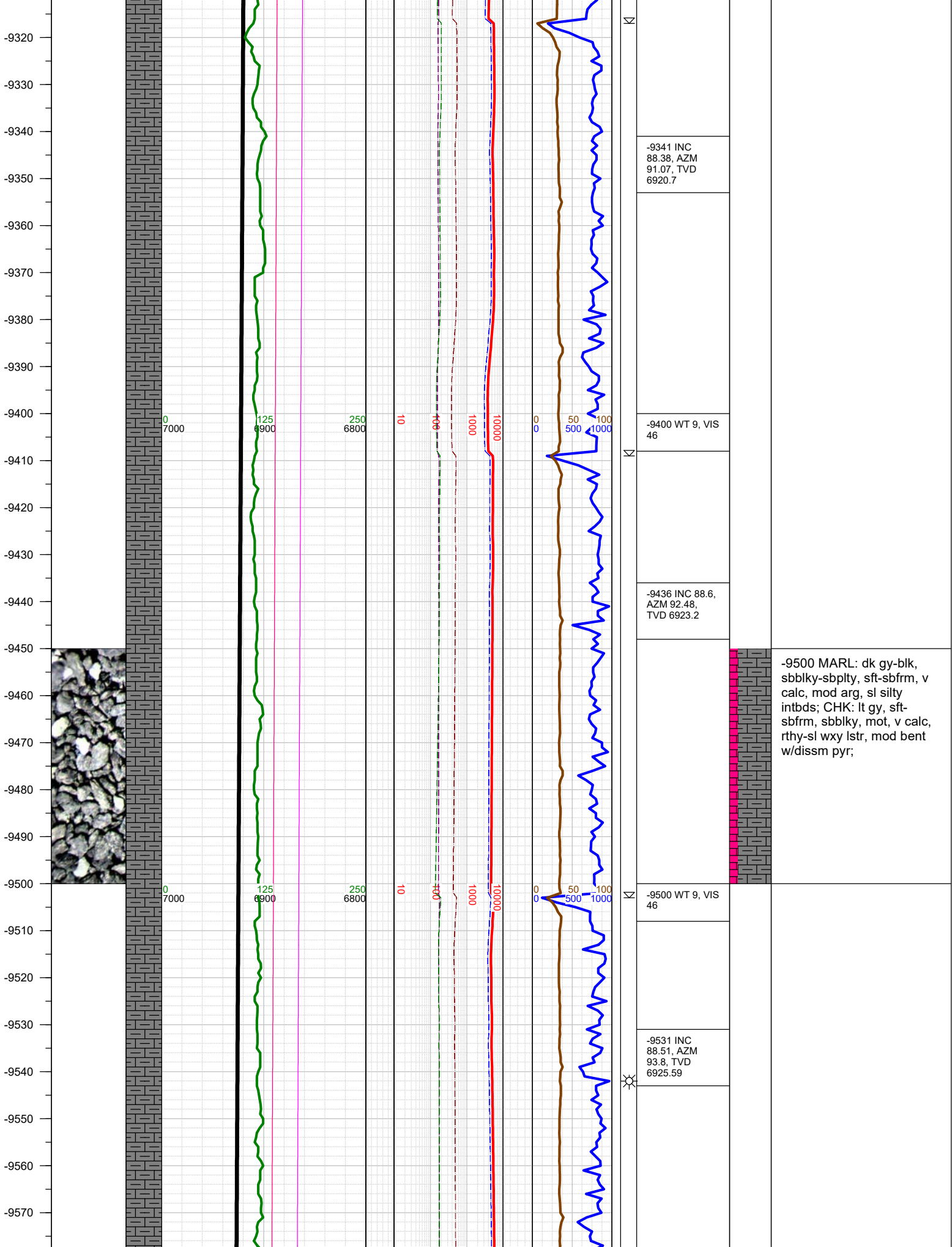




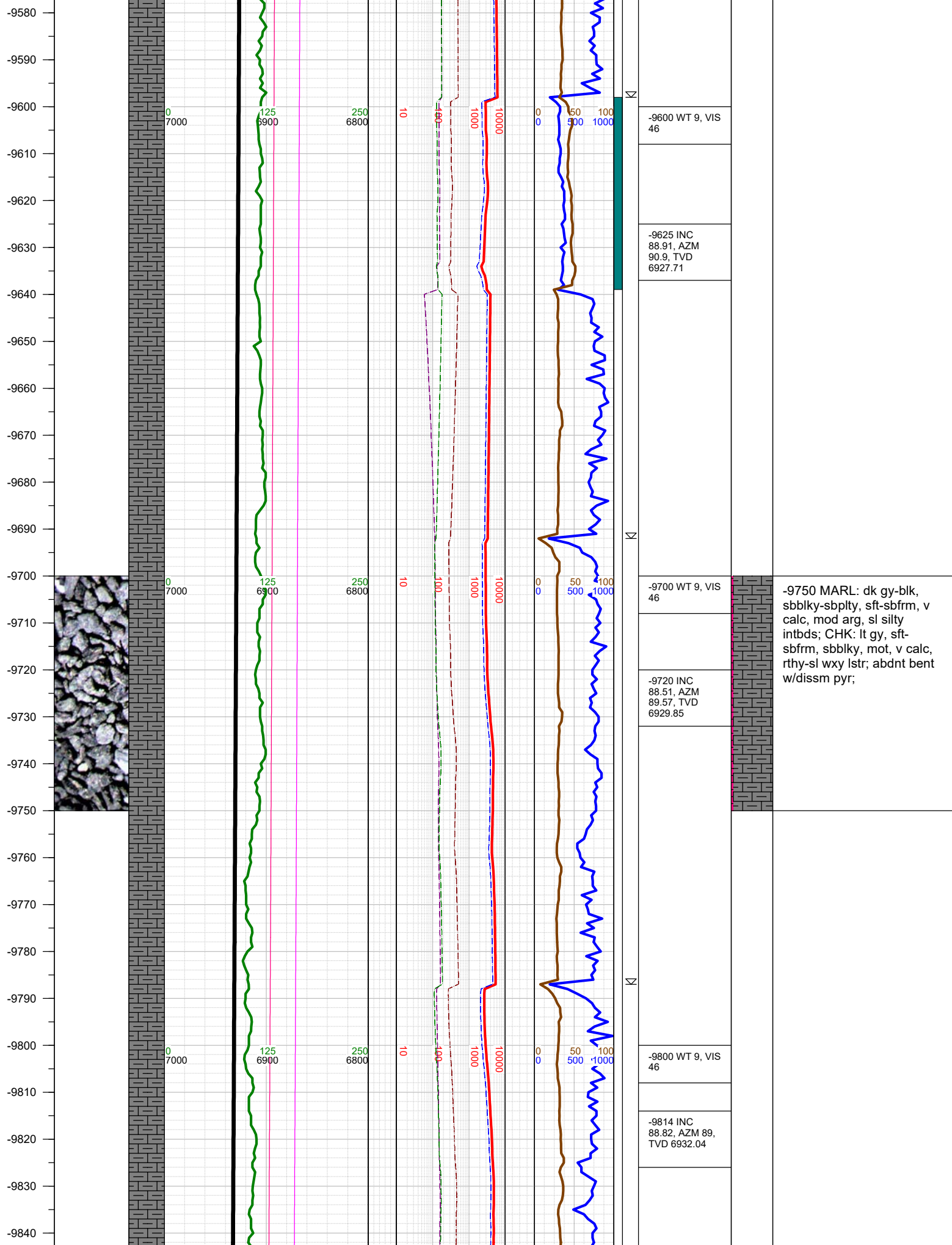


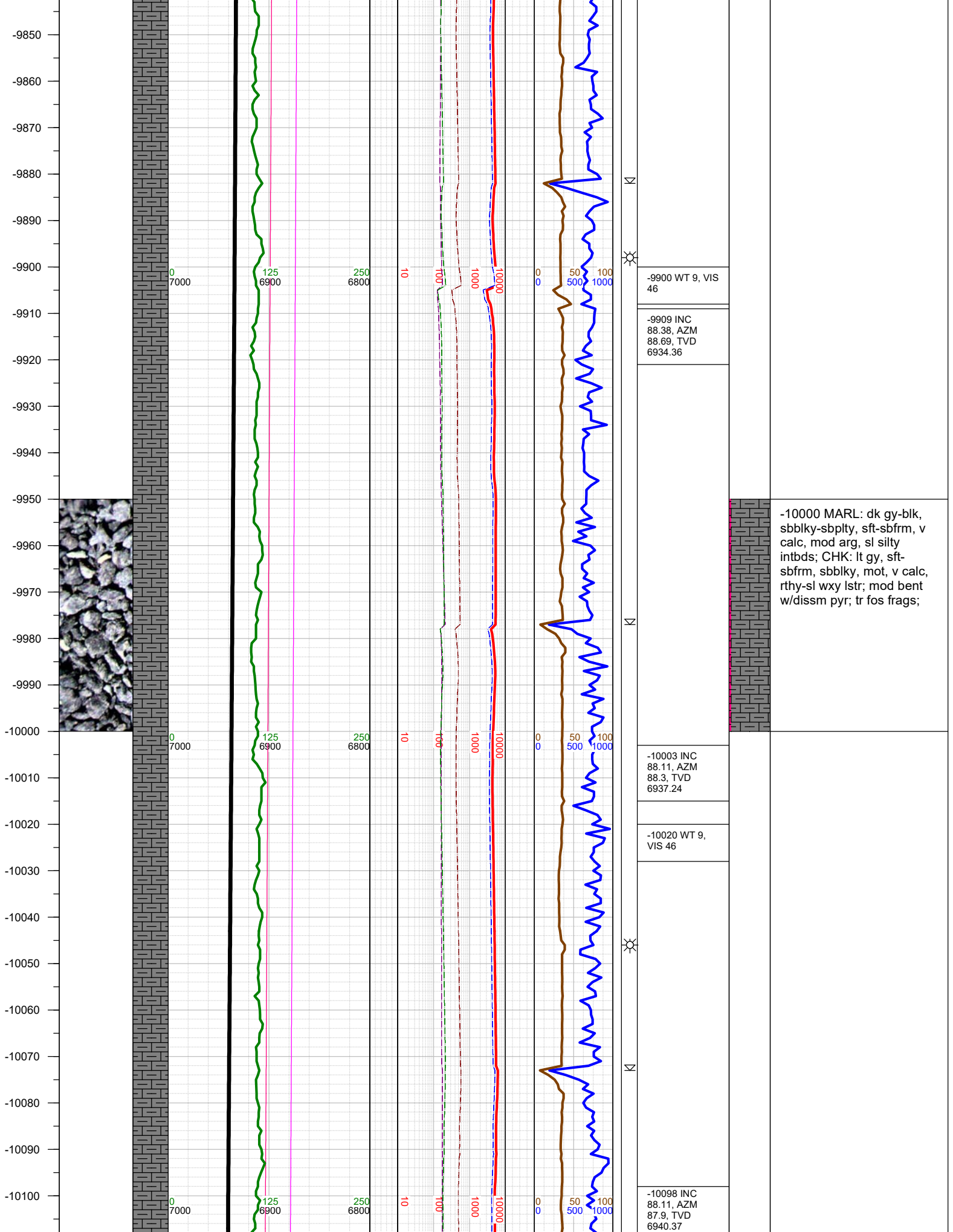


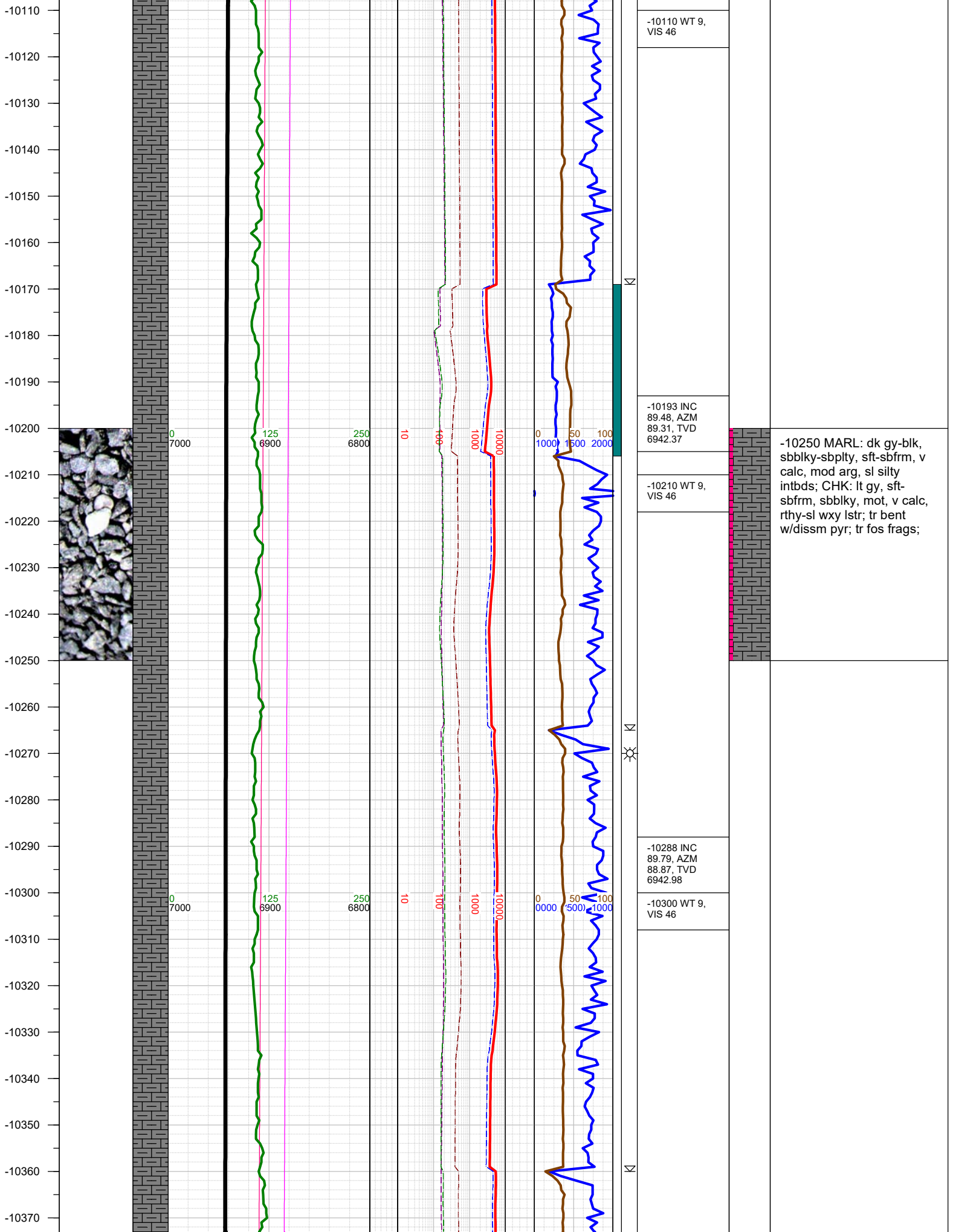






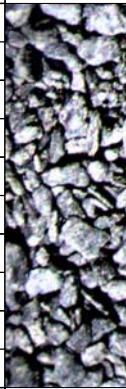








-10380  
-10390  
-10400  
-10410  
-10420  
-10430  
-10440  
-10450  
-10460  
-10470  
-10480  
-10490  
-10500  
-10510  
-10520  
-10530  
-10540  
-10550  
-10560  
-10570  
-10580  
-10590  
-10600  
-10610  
-10620  
-10630



0  
7000

125  
6900

250  
6800

10

100

1000

10000

0  
0

50  
500

100  
1000

-10383 INC  
89.7, AZM 88.3,  
TVD 6943.4

-10400 WT 9.2,  
VIS 48



-10477 INC  
89.79, AZM  
87.81, TVD  
6943.82

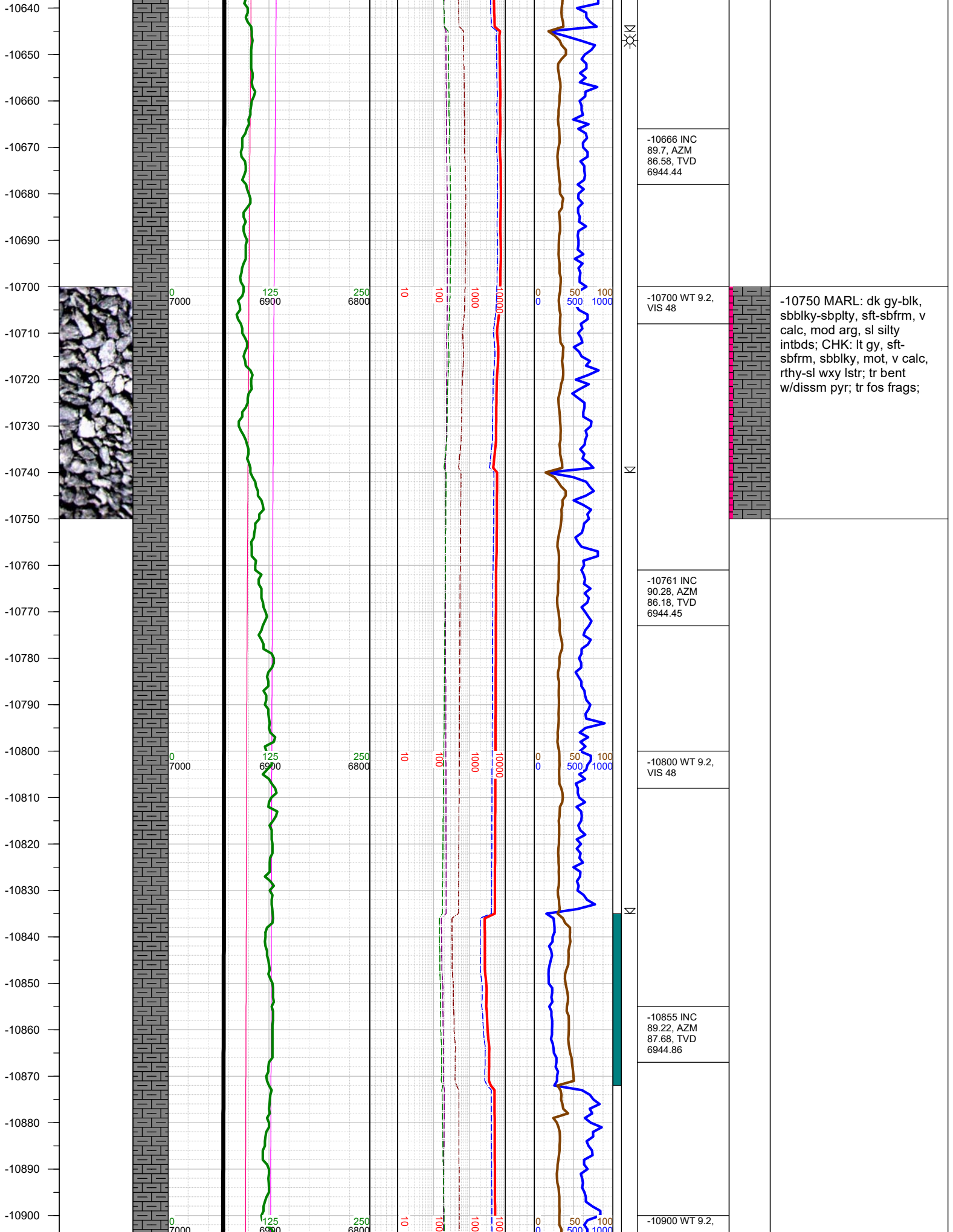
-10500 WT 9.2,  
VIS 48



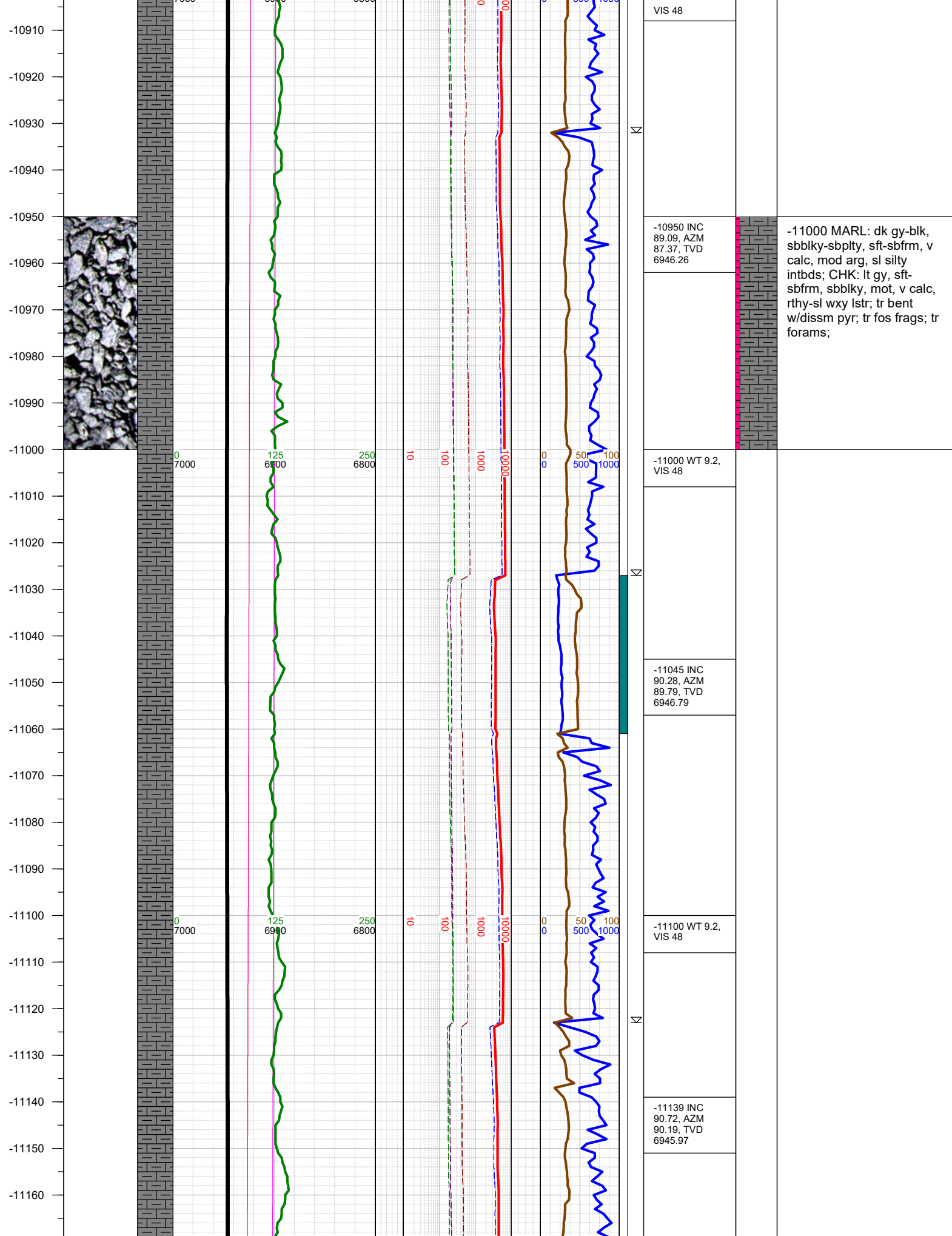
-10571 INC  
89.88, AZM  
87.11, TVD  
6944.09

-10600 WT 9.2,  
VIS 48

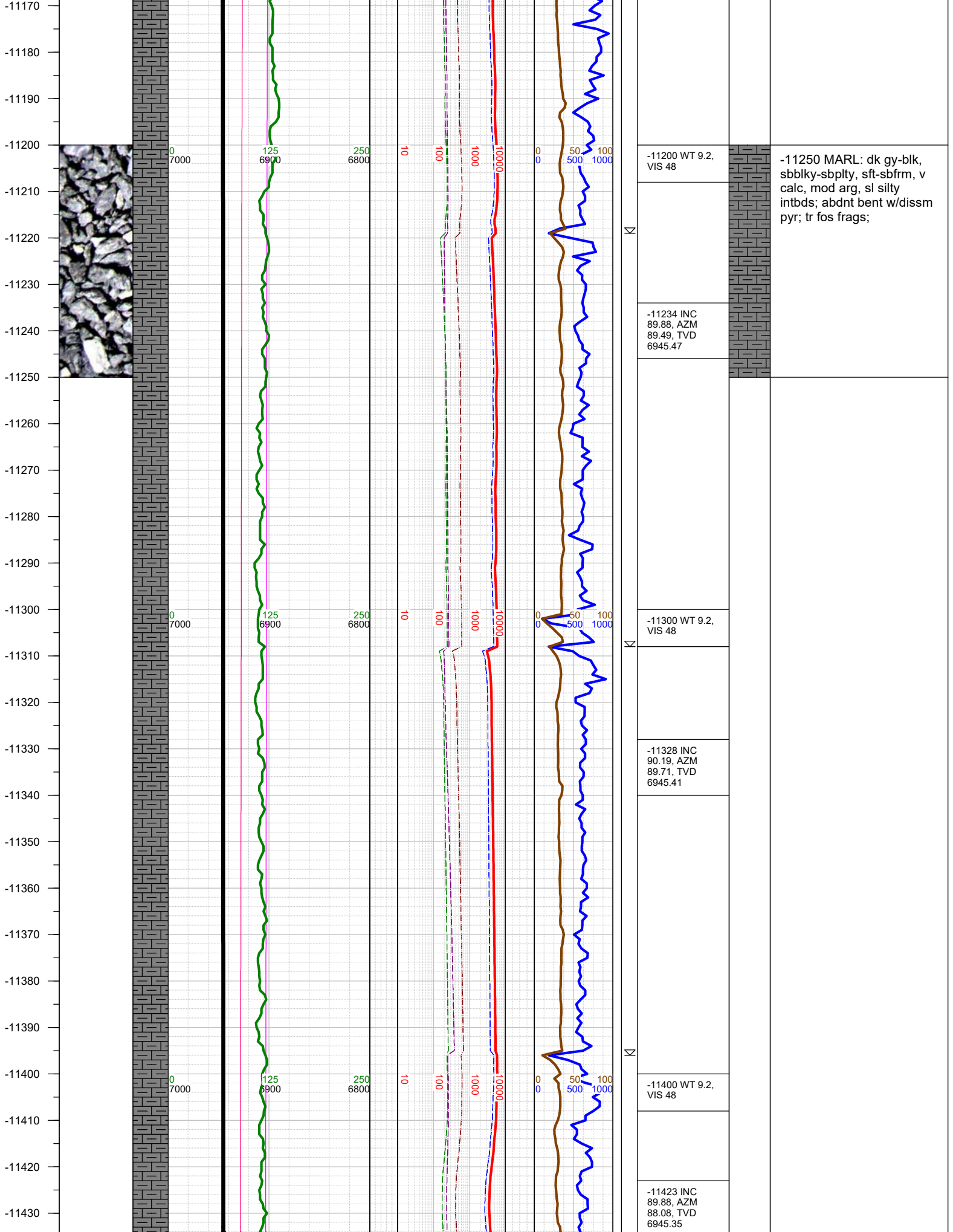
-10500 MARL: dk gy-blk,  
sbbly-sbply, sft-sbfrm, v  
calc, mod arg, sl silty  
intbds; CHK: lt gy, sft-  
sbfrm, sbbly, mot, v calc,  
rthy-sl wxy lstr; tr bent  
w/dissm pyr; tr fos frags;

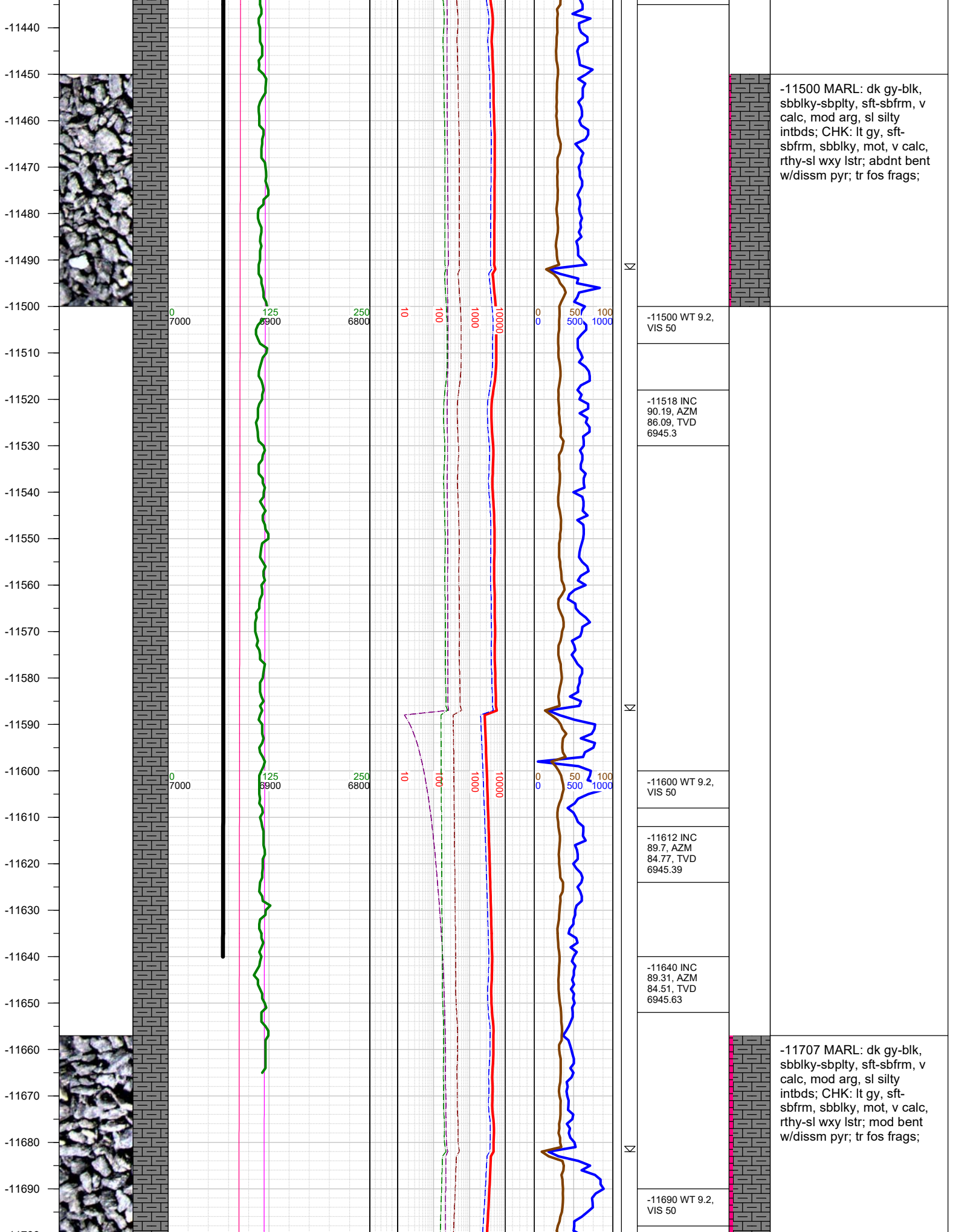


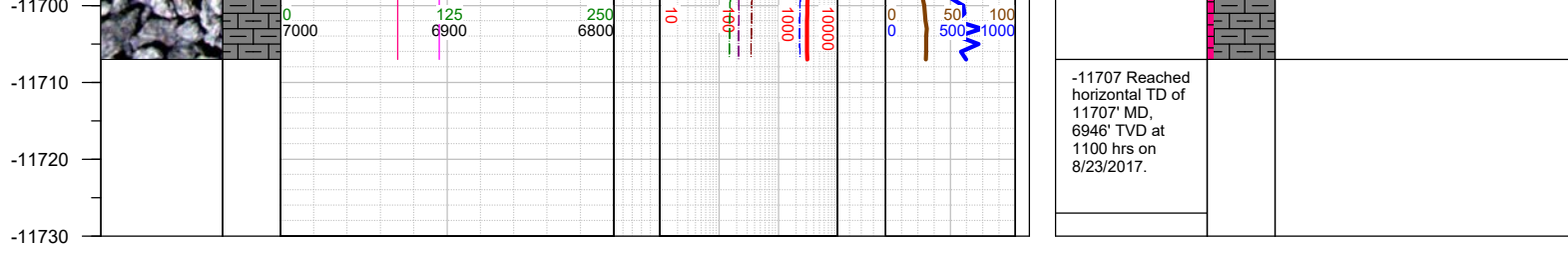
-10750 MARL: dk gy-blk, sbblky-sbplty, sft-sbfrm, v calc, mod arg, sl silty intbds; CHK: lt gy, sft-sbfrm, sbblky, mot, v calc, rthy-sl wxy lstr; tr bent w/dissm pyr; tr fos frags;











TOTAL DEPTH = 11707'

Thank you for using Earth Science Agency