

SURVEY NOTES

- SEE SHEET 3 OF 3 FOR COORDINATE TABLE AND SURVEY NOTES.

	BP AMERICA PRODUCTION COMPANY US LOWER 48 ONSHORE
	MULTI-WELL PLAN
	MARQUEZ A 2 AND LUCHINI 32-06-12 2 PART OF SECTION 07, TOWNSHIP 32N, RANGE 05W AND SECTION 12, TOWNSHIP 32N, RANGE 06W, N.M.P.M. ARCHULETA COUNTY, COLORADO

DRAWN BY CFW/RLM	CHECKED BY RLM	SCALE 1"=1000'	DATE 10/24/2017	SHEET 1 OF 3	REVISION
---------------------	-------------------	-------------------	--------------------	-----------------	----------

LEGEND

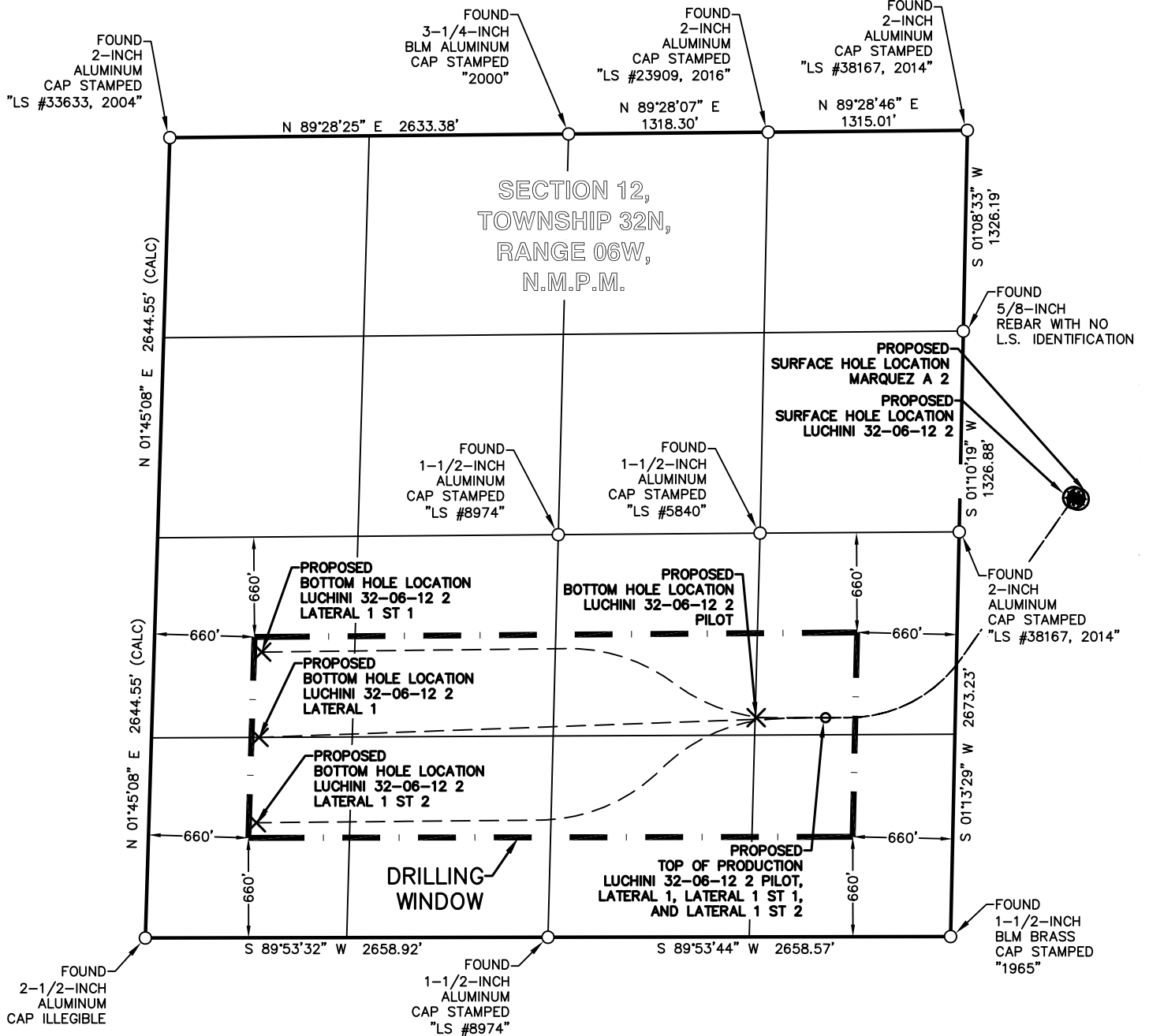
FOUND MONUMENT ○

PROPOSED SURFACE HOLE LOCATION ●

PROPOSED BOTTOM HOLE LOCATION ×

0 500 1000 2000

GRAPHIC SCALE IN FEET



BP AMERICA
PRODUCTION COMPANY
US LOWER 48 ONSHORE

MULTI-WELL PLAN

MARQUEZ A 2 AND LUCHINI 32-06-12 2

PART OF
SECTION 07, TOWNSHIP 32N, RANGE 05W AND
SECTION 12, TOWNSHIP 32N, RANGE 06W,
N.M.P.M.
ARCHULETA COUNTY, COLORADO

DRAWN BY
CFW/RLM

CHECKED BY
RLM

SCALE
1"=1000'

DATE
10/24/2017

SHEET
2 OF 3

REVISION

MARQUEZ A 2 WELLBORE DISTANCES	
SHL TO TOP	914'
TOP TO BHL PILOT	463'
TOP TO BHL LATERAL 1	3,517'
TOP TO BHL LATERAL 1 ST 1	3,857'


MARQUEZ A 2	CSZ NAD'83	NAD'83	TIES	SEC / TWP / RNG	ELEVATION
PROPOSED SURFACE HOLE LOCATION (SHL)	N (Y) = 1,139,297.43' E (X) = 2,433,779.38'	LAT. = 37.03307499°N LON. = 107.43979390°W	FNL = 2417' FWL = 781'	SEC 07, TWP 32N, RNG 05W	EXISTING GROUND 6261.26'
PROPOSED TOP OF PRODUCTION (TOP) PILOT, LATERAL 1, AND LATERAL 1 ST 1	N (Y) = 1,139,815.40' E (X) = 2,434,020.32'	LAT. = 37.03451096°N LON. = 107.43900554°W	FNL = 1893' FWL = 1011'	SEC 07, TWP 32N, RNG 05W	PROPOSED GRADE 6260.25'
PROPOSED BOTTOM HOLE LOCATION (BHL) PILOT	N (Y) = 1,139,815.40' E (X) = 2,434,484.12'	LAT. = 37.03453739°N LON. = 107.43741705°W	FNL = 1881' FWL = 1475'	SEC 07, TWP 32N, RNG 05W	
PROPOSED BOTTOM HOLE LOCATION (BHL) LAT 1	N (Y) = 1,139,784.04' E (X) = 2,437,537.30'	LAT. = 37.03462472°N LON. = 107.42695783°W	FNL = 1835' FEL = 710'	SEC 07, TWP 32N, RNG 05W	
PROPOSED BOTTOM HOLE LOCATION (BHL) LAT 1 ST 1	N (Y) = 1,140,908.71' E (X) = 2,437,544.94'	LAT. = 37.03771326°N LON. = 107.42701114°W	FNL = 710' FEL = 710'	SEC 07, TWP 32N, RNG 05W	

LUCHINI 32-06-12 2 WELLBORE DISTANCES	
SHL TO TOP	2,321'
TOP TO BHL PILOT	459'
TOP TO BHL LATERAL 1	3,744'
TOP TO BHL LATERAL 1 ST 1	3,825'
TOP TO BHL LATERAL 1 ST 2	3,938'

LUCHINI 32-06-12 2	CSZ NAD'83	NAD'83	TIES	SEC / TWP / RNG	ELEVATION
PROPOSED SURFACE HOLE LOCATION (SHL)	N (Y) = 1,139,306.97' E (X) = 2,433,750.94'	LAT. = 37.03309957°N LON. = 107.43989198°W	FNL = 2408' FWL = 752'	SEC 07, TWP 32N, RNG 05W	EXISTING GROUND 6262.51'
PROPOSED TOP OF PRODUCTION (TOP) PILOT, LAT 1, LAT 1 ST 1, AND LAT 1 ST 2	N (Y) = 1,137,854.02' E (X) = 2,432,111.69'	LAT. = 37.02901647°N LON. = 107.44540256°W	FSL = 1447' FEL = 856'	SEC 12, TWP 32N, RNG 06W	PROPOSED GRADE 6260.25'
PROPOSED BOTTOM HOLE LOCATION (BHL) PILOT	N (Y) = 1,137,854.02' E (X) = 2,431,652.98'	LAT. = 37.02899022°N LON. = 107.44697349°W	FSL = 1448' FEL = 1315'	SEC 12, TWP 32N, RNG 06W	
PROPOSED BOTTOM HOLE LOCATION (BHL) LATERAL 1	N (Y) = 1,137,723.93' E (X) = 2,428,370.32'	LAT. = 37.02844458°N LON. = 107.45820620°W	FSL = 1324' FWL = 710'	SEC 12, TWP 32N, RNG 06W	
PROPOSED BOTTOM HOLE LOCATION (BHL) LATERAL 1 ST 1	N (Y) = 1,138,287.51' E (X) = 2,428,387.56'	LAT. = 37.02999304°N LON. = 107.45818763°W	FSL = 1887' FWL = 710'	SEC 12, TWP 32N, RNG 06W	
PROPOSED BOTTOM HOLE LOCATION (BHL) LATERAL 1 ST 2	N (Y) = 1,137,160.24' E (X) = 2,428,353.08'	LAT. = 37.02689583°N LON. = 107.45822477°W	FSL = 760' FWL = 710'	SEC 12, TWP 32N, RNG 06W	

SURVEY NOTES

1. BEARING BASIS FOR THIS SURVEY IS BASED ON THE NORTH AMERICAN DATUM OF 1983, COLORADO STATE PLANE COORDINATE SYSTEM, COLORADO SOUTH, ZONE 0503.
2. ELEVATION BASIS FOR THIS SURVEY IS BASED ON THE NORTH AMERICAN VERTICAL DATUM OF 1988 (GEOID12A).
3. SURVEYED IN THE FIELD ON 07/22/2017.
4. BEARINGS AND DISTANCE SHOWN ARE MEASURED IN THE FIELD UNLESS OTHERWISE NOTED.
5. ALL MEASURED DISTANCES SHOWN ARE GRID USING A COMBINED SCALE FACTOR 0.99974591.
6. GPS INSTRUMENT OPERATOR: BRIAN BONIFACE
7. GPS PDOP VALUE: 1.5/1.5

	BP AMERICA PRODUCTION COMPANY US LOWER 48 ONSHORE
	MULTI-WELL PLAN
	MARQUEZ A 2 AND LUCHINI 32-06-12 2 PART OF SECTION 07, TOWNSHIP 32N, RANGE 05W AND SECTION 12, TOWNSHIP 32N, RANGE 06W, N.M.P.M. ARCHULETA COUNTY, COLORADO

DRAWN BY CFW/RLM	CHECKED BY RLM	SCALE N/A	DATE 10/24/2017	SHEET 3 OF 3	REVISION
---------------------	-------------------	--------------	--------------------	-----------------	----------