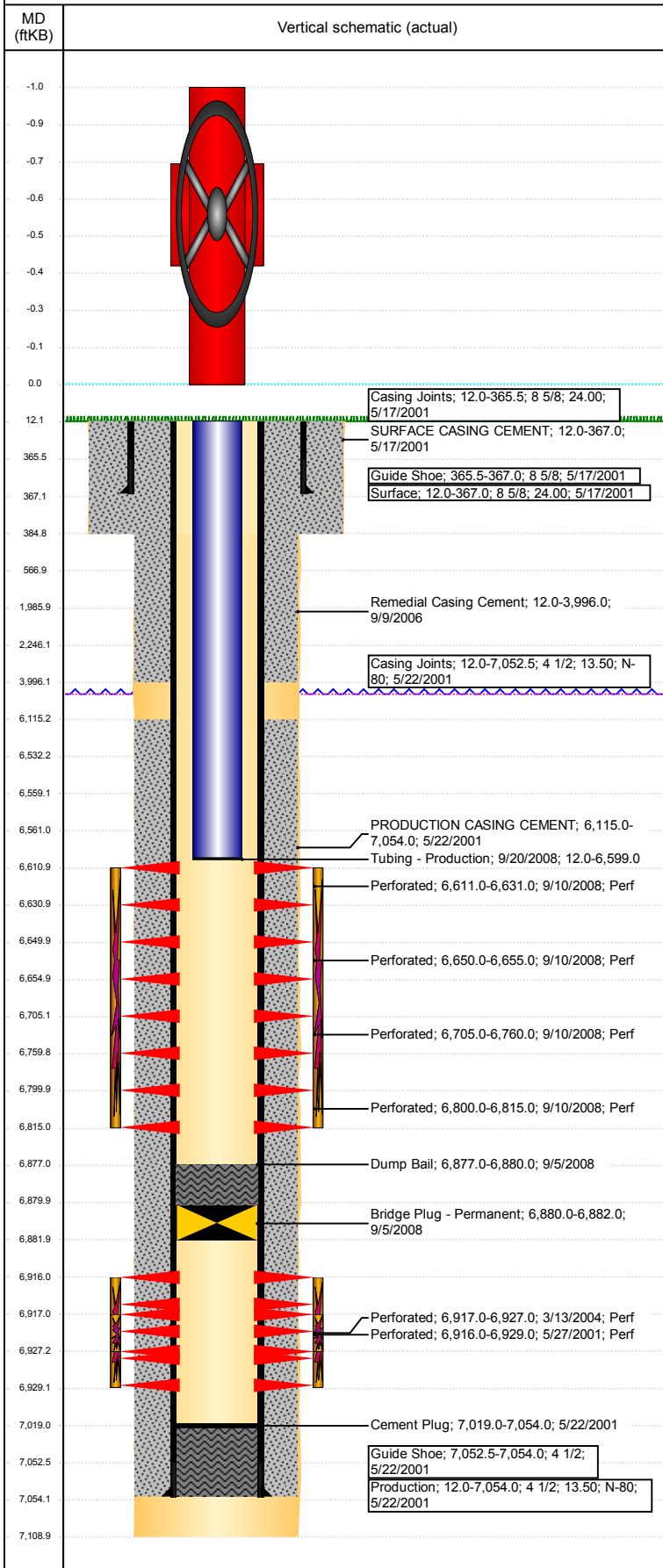


**Well Name: BOSCH 13-24**

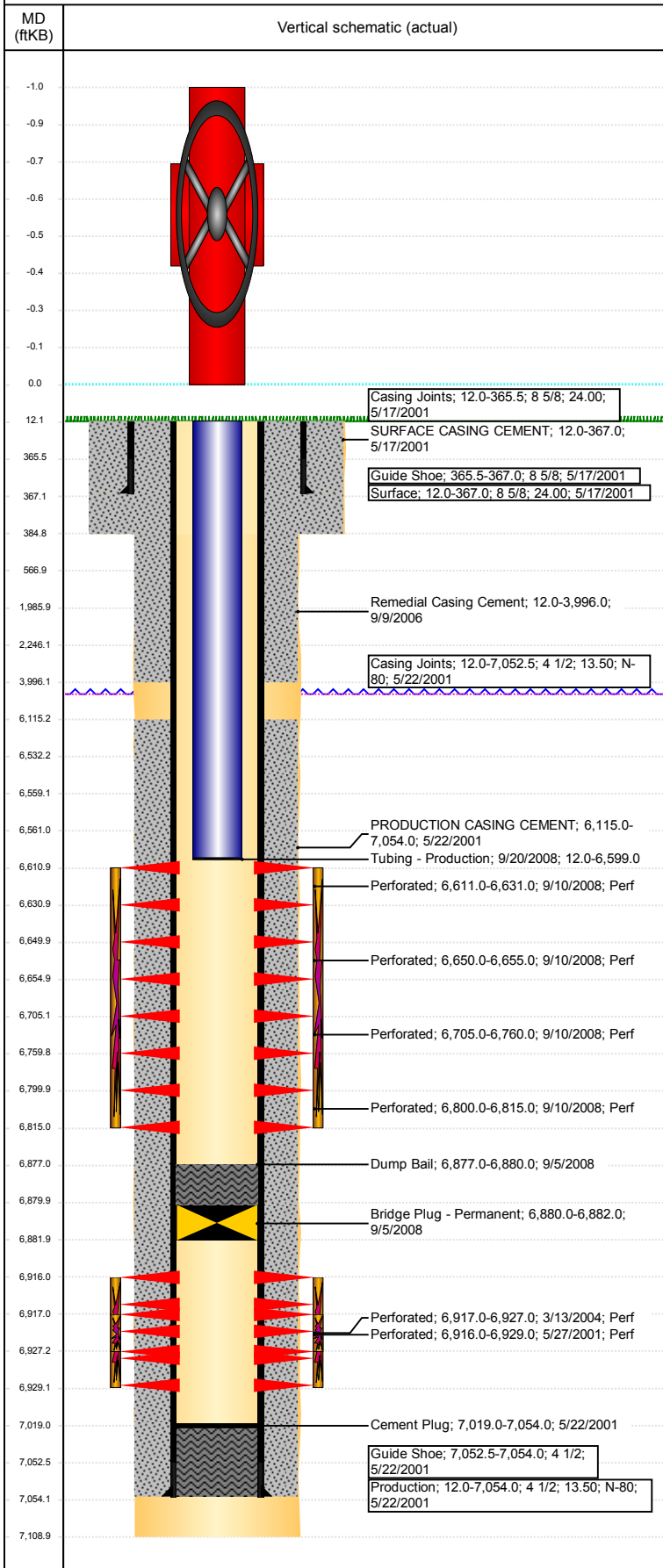
VERTICAL - ORIGINAL HOLE, 11/2/2017 10:58:39 AM



Well Header										
API 05-123-20284		Business Unit DJ BASIN		District 15		Well Config VERTICAL				
Original KB Elevation (ft) 4,635		KB - GL / MSL (ftKB) 12.00		Spud Date 5/16/2001		P & A Date				
Comment										
Directions To Well HWY 34/CR 47.5 N .3 W ON S SIDE OF DAIRY .25 TO TB N-NE .25 INTO										
Congressional Location										
Quarter 3 NE		Quarter 4 SW		Section 13	Township 5	Twnshp N/S Dir N	Range 65		Range E/W Dir W	
Bottom Hole Location										
North-South Distance (ft)			From N or S Line		East-West Distance (ft)		From E or W Line			
Plug Back Total Depths										
Date		Depth (ftKB)		Method		Com				
5/22/2001		7,019.0		CASING TALLY						
Wellbore Sections										
Section Des			Size (in)		Act Top, MD (ftKB)		Act Btm, MD (ftKB)			
SURFACE			12 1/4		12		385			
PRODUCTION			7 7/8		385		7,109			
Zone Statuses										
Zone Name		Status Date		Status	Fluid Type	Job	Prod Method			
CODELL		6/4/2001		PR	Oil	DRILLING/CO...				
CODELL		3/17/2004		PR	Oil	RE-FRAC, 3/12...				
CODELL		9/5/2008		SI		RECOMPLETI...				
NIOBRARA		9/22/2008		PR	Oil	RECOMPLETI...				
Casing Strings										
Surface, 367.0ftKB										
Casing Description Surface			Run Date 5/17/2001		OD (in) 8 5/8	Wt/Len (l... 24.00	Grade	Top, MD (ft... 12.0	MD (ftKB) 367.0	
Production, 7,054.0ftKB										
Casing Description Production			Run Date 5/22/2001		OD (in) 4 1/2	Wt/Len (l... 13.50	Grade N-80	Top, MD (ft... 12.0	MD (ftKB) 7,054.0	
Cement										
Description						Top Depth (ftKB)		Bottom Depth (ftKB)		
SURFACE CASING CEMENT						12.0		367.0		
Description Cement Plug						Top Depth (ftKB) 7,019.0		Bottom Depth (ftKB) 7,054.0		
Description PRODUCTION CASING CEMENT						Top Depth (ftKB) 6,115.0		Bottom Depth (ftKB) 7,054.0		
Description Remedial Casing Cement						Top Depth (ftKB) 12.0		Bottom Depth (ftKB) 3,996.0		
Description Dump Bail						Top Depth (ftKB) 6,877.0		Bottom Depth (ftKB) 6,880.0		
Description DUMP BAIL						Top Depth (ftKB) 6,532.0		Bottom Depth (ftKB) 6,559.0		
Description SHOE PLUG						Top Depth (ftKB) 12.1		Bottom Depth (ftKB) 567.0		
Description COURTESY PLUG						Top Depth (ftKB) 1,986.0		Bottom Depth (ftKB) 2,246.0		
Tubing Strings										
Tubing Description Tubing - Production			Run Date 9/20/2008		String... 2 3/8	ID (in) 2.00	Wt (lb/ft) 4.70	Grade J-55	Len (ft) 6,587.00	Set De... 
Tubing Components										
Item Des		OD (in)	Wt (lb/ft)	Grade	Jts	Len (ft)	Btm (ftKB)	Btm (TVD) (ftKB)		
Tubing		2 3/8	4.70	J-55	202	6,585.50	6,597.5			
Seat Nipple		2 3/8			1	1.00	6,598.5			
Mule Shoe		2 3/8			1	0.50	6,599.0			
Other In Hole										
Run Date		Des				OD (in)	Top (ftKB)	Btm (ftKB)		
9/5/2008		Bridge Plug - Permanent				3.9	6,880.0	6,882.0		
10/26/2017		Cast Iron Bridge Plug				3.92	6,559.0	6,561.0		
Logs										
Date		Type				Top, MD (ftKB)	Btm, MD (ftKB)			
5/20/2001		COMPENSATED DENSITY				4,150.0	7,053.0			
5/20/2001		INDUCTION				367.0	7,073.0			
5/27/2001		CEMENT BOND				6,006.0	7,018.0			

**Well Name: BOSCH 13-24**

VERTICAL - ORIGINAL HOLE, 11/2/2017 10:58:39 AM



Logs					
Date		Type	Top, MD (ftKB)		Btm, MD (ftKB)
1/12/2016		GYRO	0.0		6,550.0
Perforation Data					
Linked Zone	Bnch/St g	Sum of Entered Shot Total	Top (ftKB)	Btm (ftKB)	Date
NIOBRARA, ORIGINAL HOLE	A	40	6,611.00	6,631.00	9/10/2008
NIOBRARA, ORIGINAL HOLE	A	10	6,650.00	6,655.00	9/10/2008
NIOBRARA, ORIGINAL HOLE	B	220	6,705.00	6,760.00	9/10/2008
NIOBRARA, ORIGINAL HOLE	C	60	6,800.00	6,815.00	9/10/2008
CODELL, ORIGINAL HOLE		52	6,916.00	6,929.00	5/27/2001
CODELL, ORIGINAL HOLE		40	6,917.00	6,927.00	3/13/2004
Total (Sum)		422			
Stimulation Intervals					
Start Date		Primary Job Type			
6/1/2001		DRILLING/COMPLETION - ORIGINAL			
Technical Result		Tech Result Details		Tech Result Note	
Comment					
Start Date		Primary Job Type			
3/16/2004		RE-FRAC			
Technical Result		Tech Result Details		Tech Result Note	
Comment					
Start Date		Primary Job Type			
9/17/2008		RECOMPLETION			
Technical Result		Tech Result Details		Tech Result Note	
Comment					