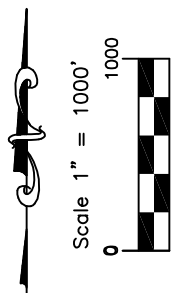
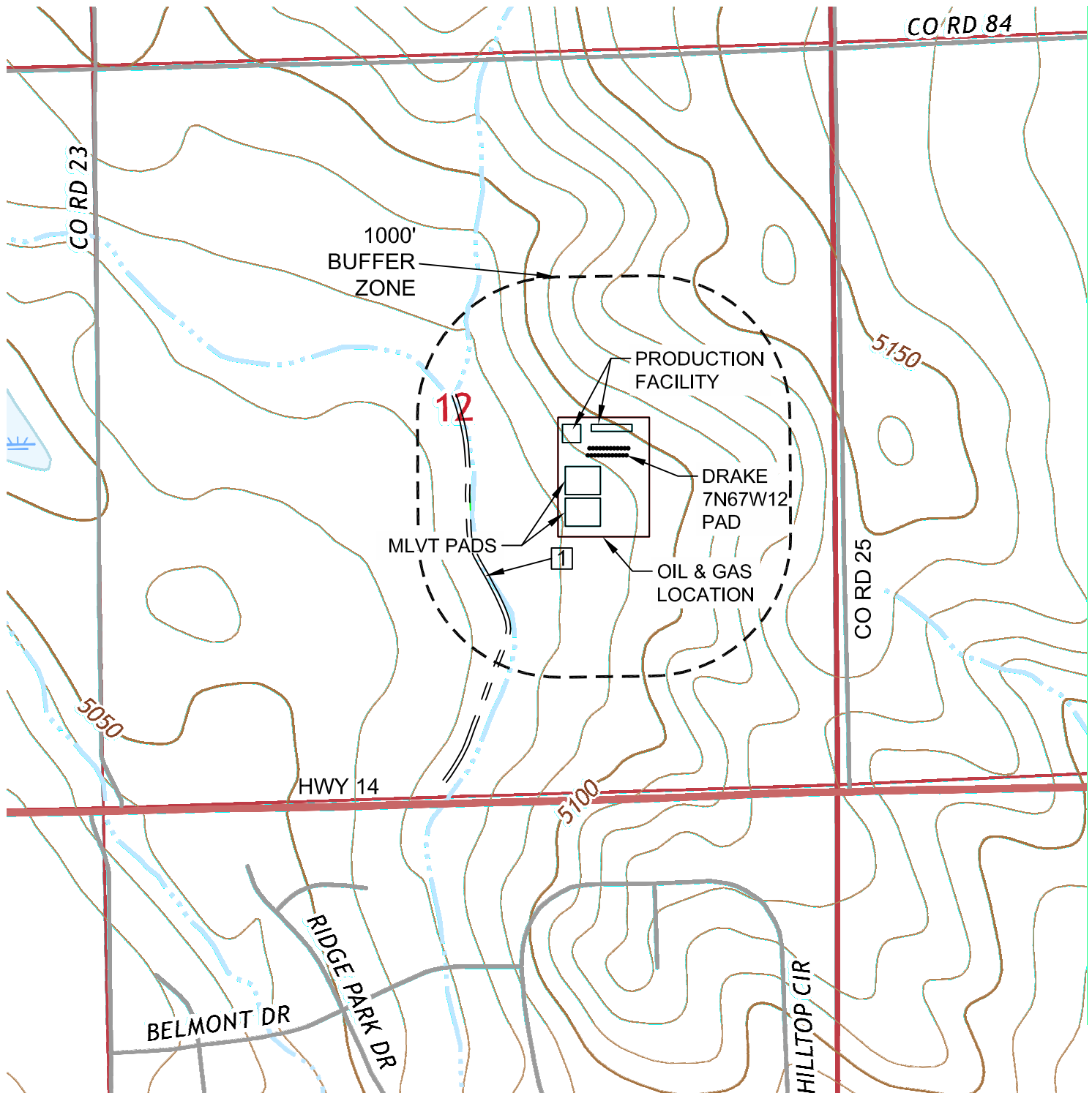


HYDROLOGY MAP DRAKE 7N67W12 PAD

SECTION: 12
TOWNSHIP: 7N
RANGE: 67W
6TH P.M.
WELD COUNTY, CO



DISTANCES BELOW MEASURED FROM THE PROPOSED EDGE OF DISTURBANCE OF THE OIL AND GAS LOCATION

[1] IRRIGATION DITCH: 562' SW (NEAREST DOWN GRADIENT WATER FEATURE)