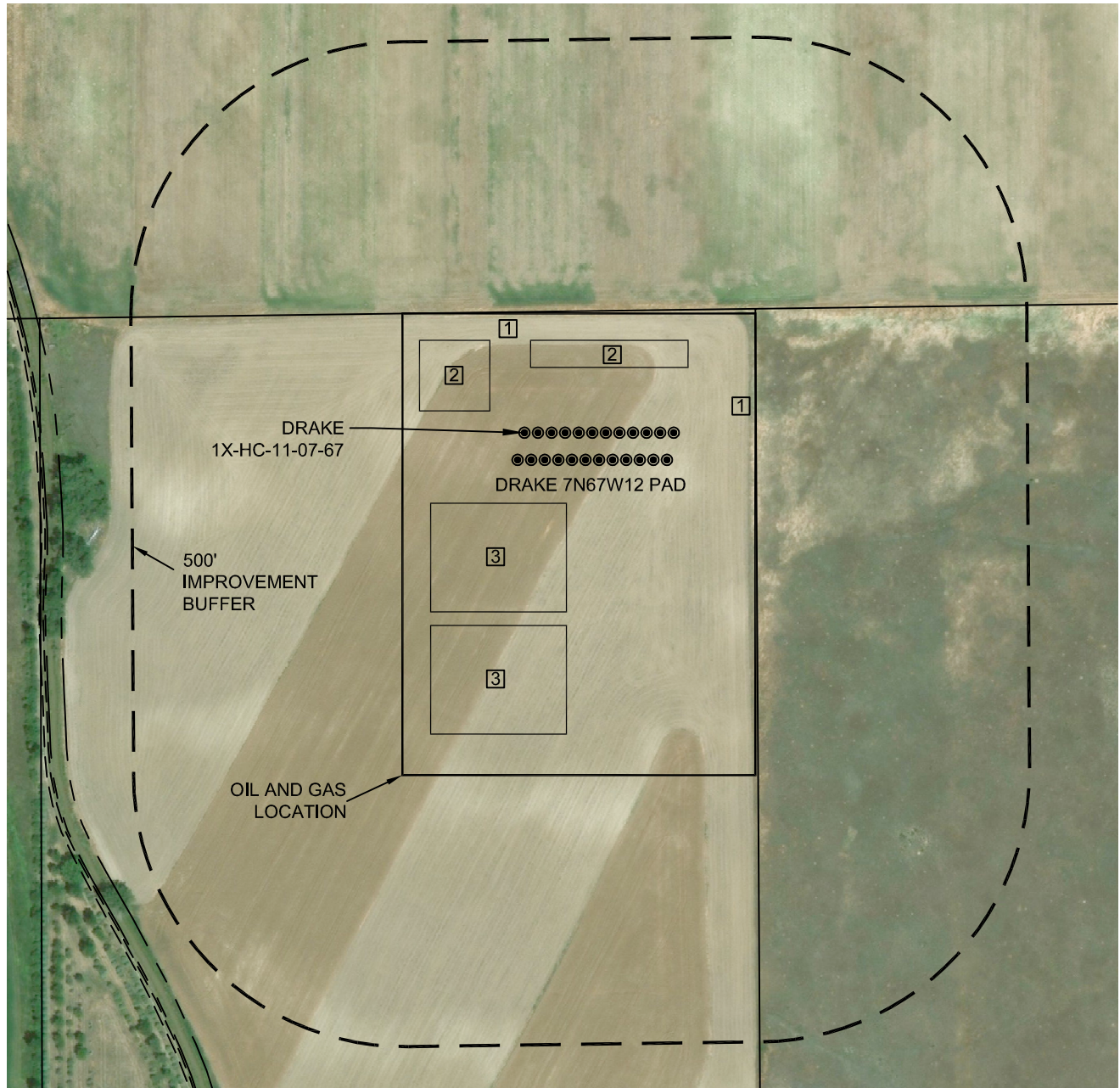


# LOCATION DRAWING DRAKE 7N67W12 PAD

SECTION: 12  
TOWNSHIP: 7N  
RANGE: 67W  
6TH P.M.  
WELD COUNTY, CO



## IMPROVEMENTS (MEASUREMENTS ARE FROM THE PROPOSED DRAKE 1X-HC-11-07-67 WELL LOCATION)

- ① PROPERTY LINE: 223' N & 427' E
- ② PROPOSED PRODUCTION FACILITIES: 75' NW & 121' NE
- ③ TEMPORARY MLVT PADS: 130' S & 355' S



Scale 1" = 300'

