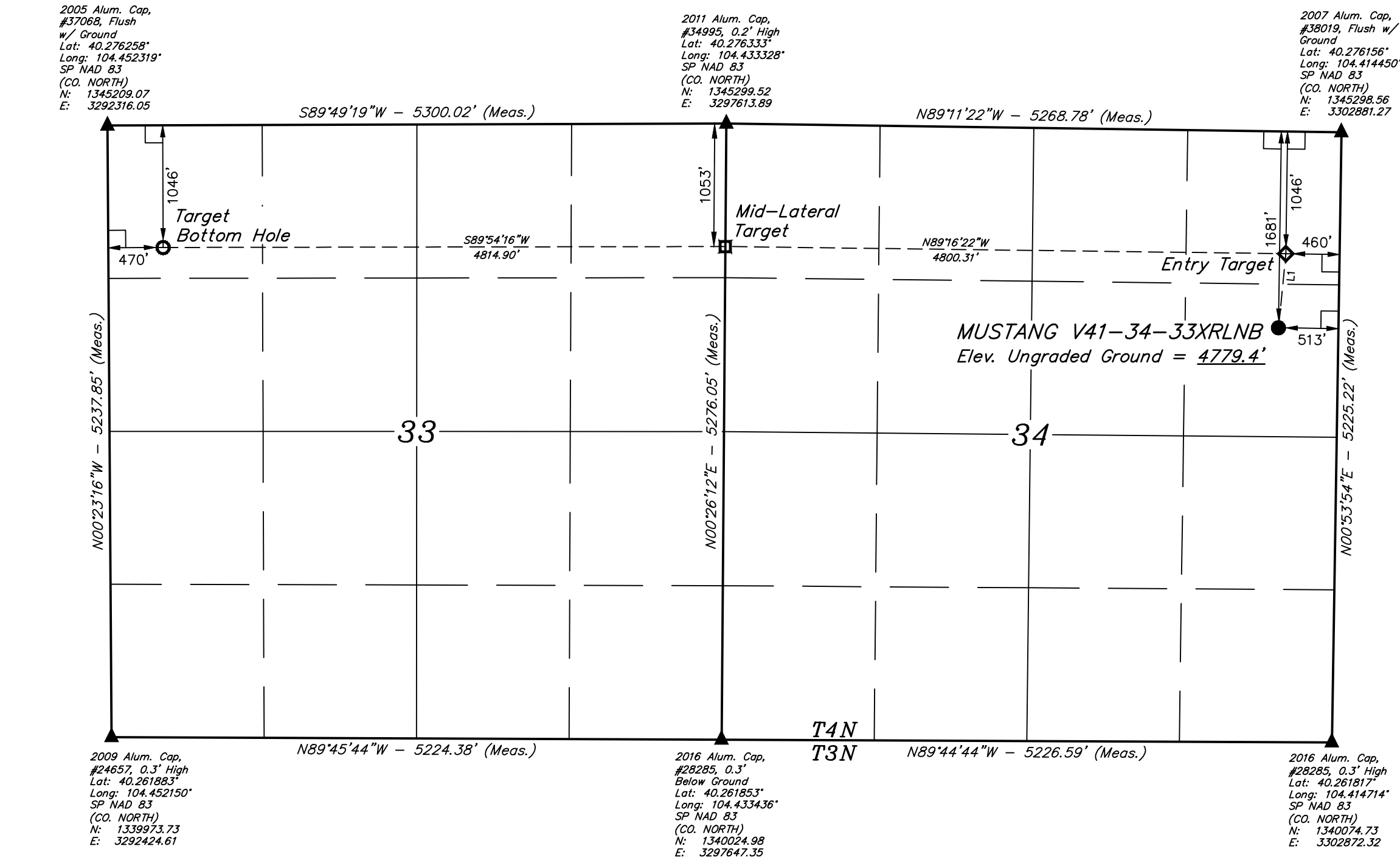


LEGEND:

- 90° SYMBOL
- PROPOSED WELLHEAD.
- ENTRY TARGET.
- MID-LATERAL TARGET.
- TARGET BOTTOM HOLE.
- SECTION CORNERS LOCATED. (NAD 83)



PDOP = 1.4

NAD 83 (SURFACE LOCATION)	NAD 83 (ENTRY TARGET)	NAD 83 (MID-LATERAL TARGET)	NAD 83 (TARGET BOTTOM HOLE)
LATITUDE = 40°16'17.61" (40.271558)	LATITUDE = 40°16'23.88" (40.273300)	LATITUDE = 40°16'24.40" (40.273444)	LATITUDE = 40°16'24.22" (40.273394)
LONGITUDE = 104°24'58.94" (104.416372)	LONGITUDE = 104°24'58.15" (104.416153)	LONGITUDE = 104°26'00.06" (104.433350)	LONGITUDE = 104°27'02.16" (104.450600)
STATE PLANE NAD 83 (CO. NORTH)	STATE PLANE NAD 83 (CO. NORTH)	STATE PLANE NAD 83 (CO. NORTH)	STATE PLANE NAD 83 (CO. NORTH)
N: 1343618.03 E: 3302365.74	N: 1344252.92 E: 3302419.60	N: 1344246.82 E: 3297620.57	N: 1344171.58 E: 3292807.54

BONANZA CREEK ENERGY  
OPERATING COMPANY, LLC

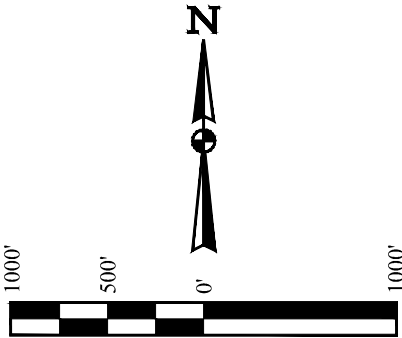
MUSTANG V41-34-33XRLNB  
SE 1/4 NE 1/4, SECTION 34, T4N, R63W, 6th P.M.  
WELD COUNTY, COLORADO

BASIS OF BEARINGS

BASIS OF BEARINGS IS A G.P.S. OBSERVATION

BASIS OF ELEVATION

SPOT ELEVATION LOCATED AT THE NORTHEAST CORNER OF SECTION 24, T5N, R62W, 6th P.M. TAKEN FROM THE POINT OF ROCKS, QUADRANGLE, COLORADO, WELD COUNTY, 7.5 MINUTE QUAD (TOPOGRAPHIC MAP) PUBLISHED BY THE UNITED STATES DEPARTMENT OF THE INTERIOR, GEOLOGICAL SURVEY. SAID ELEVATION IS MARKED AS BEING 4530 FEET.



LINE TABLE		
LINE	DIRECTION	LENGTH
L1	N05°38'56"E	637.34'

CERTIFICATION

THIS IS TO CERTIFY THAT THE ABOVE PLAT WAS PREPARED FROM FIELD NOTES OF ACTUAL SURVEYS MADE BY ME OR UNDER MY SUPERVISION AND THAT THE SAME ARE TRUE AND CORRECT TO THE BEST OF MY KNOWLEDGE AND BELIEF.

REGISTERED LAND SURVEYOR  
REGISTRATION NO. 28285  
STATE OF COLORADO

REV: 3 10-30-17 D.COX (ENTRY TARGET MOVE)



UELS, LLC  
Corporate Office \* 85 South 200 East  
Vernal, UT 84078 \* (435) 789-1017

SURVEYED BY	JAMES FRESHWATER	09-08-17	SCALE
DRAWN BY	D.COX	05-19-17	1" = 1000'

WELL LOCATION PLAT