

REV: 2 10-04-17 J.L.G. (PAD MOVE)

LEGEND:

 PROPOSED LOCATION



BONANZA CREEK ENERGY OPERATING COMPANY, LLC

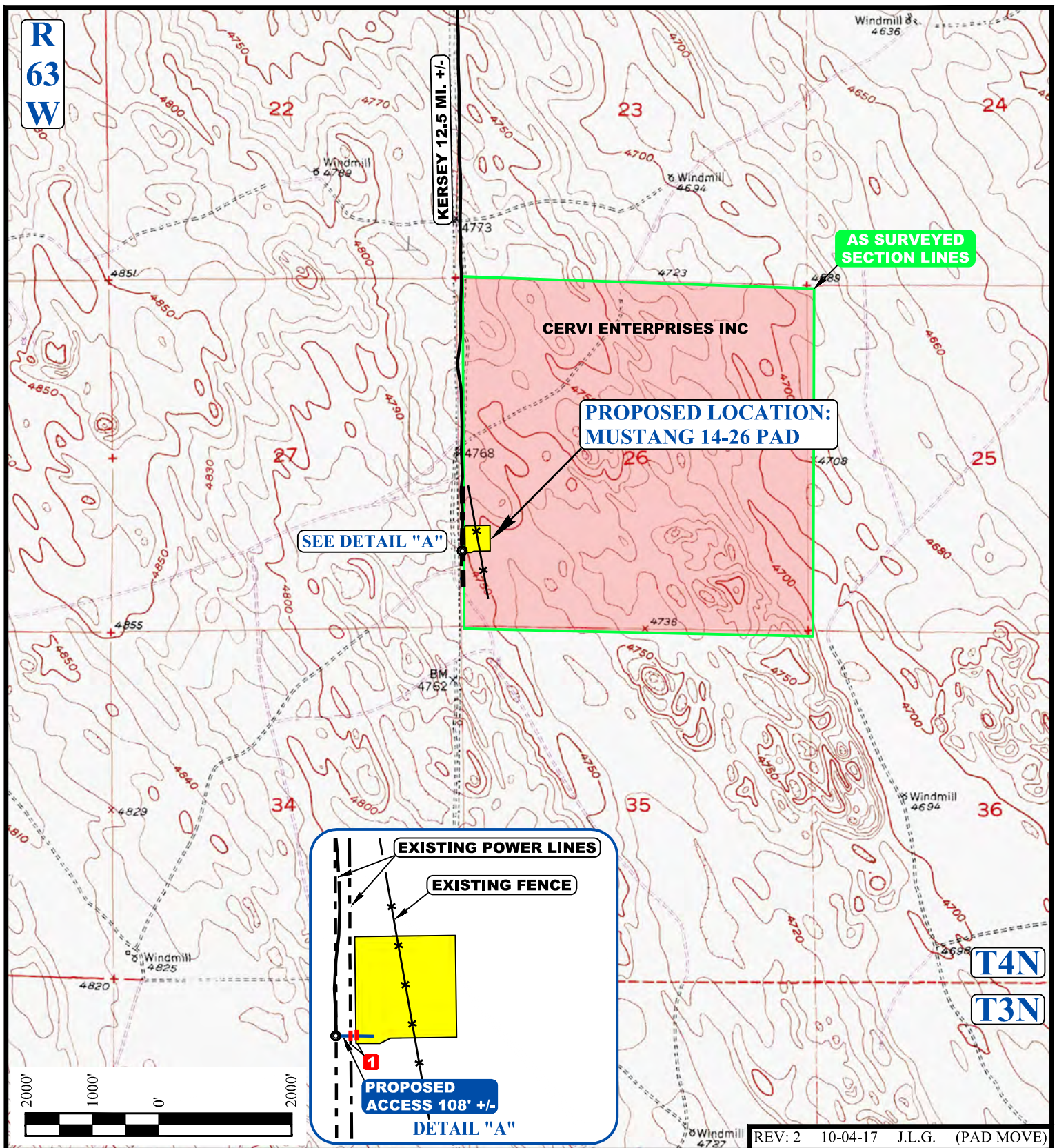
MUSTANG 14-26 PAD
SW 1/4 SW 1/4, SECTION 26, T4N, R63W, 6th P.M.
WELD COUNTY, COLORADO

SURVEYED BY	C.M.	09-06-17	SCALE
DRAWN BY	M.F.D.	11-21-16	1 : 100,000
ACCESS ROAD MAP			TOPO A

UELS, LLC

Corporate Office * 85 South 200 East
Vernal, UT 84078 * (435) 789-1017





NOTE: PARCEL DATA SHOWN HAS BEEN OBTAINED FROM VARIOUS SOURCES AND SHOULD BE USED FOR MAPPING, GRAPHIC AND PLANNING PURPOSES ONLY. NO WARRANTY IS MADE BY UINTAH ENGINEERING AND LAND SURVEYING (UELS) FOR ACCURACY OF THE PARCEL DATA.

LEGEND:

- EXISTING ROAD
- PROPOSED ROAD
- * * EXISTING FENCE
- AS SURVEYED SECTION LINE
- INSTALL 18" CULVERT



UELS, LLC
Corporate Office * 85 South 200 East
Vernal, UT 84078 * (435) 789-1017



BONANZA CREEK ENERGY OPERATING COMPANY, LLC

MUSTANG 14-26 PAD
SW 1/4 SW 1/4, SECTION 26, T4N, R63W, 6th P.M.
WELD COUNTY, COLORADO

SURVEYED BY	C.M.	09-06-17	SCALE
DRAWN BY	M.F.D.	11-21-16	1 : 24,000
ACCESS ROAD MAP			TOPO B