

T4N, R63W, 6th P.M.

BONANZA CREEK ENERGY
OPERATING COMPANY, LLC

MUSTANG D14-26-25XRLNB
NW 1/4 SW 1/4, SECTION 26, T4N, R63W, 6th P.M.
WELD COUNTY, COLORADO

BASIS OF BEARINGS
BASIS OF ELEVATION

SPOT ELEVATION LOCATED AT THE NORTHEAST CORNER OF SECTION 24, T5N, R62W, 6th P.M. TAKEN FROM THE POINT OF ROCKS, QUADRANGLE, COLORADO, WELD COUNTY, 7.5 MINUTE QUAD (TOPOGRAPHIC MAP) PUBLISHED BY THE UNITED STATES DEPARTMENT OF THE INTERIOR, GEOLOGICAL SURVEY. SAID ELEVATION IS MARKED AS BEING 4530 FEET.

2007 Alum. Cap,
#38019, Flush w/
Ground
Lat: 40.290753°
Long: 104.414561°
SP NAD 83
(CO. NORTH)
N: 1350616.03
E: 3302785.37

2015 Alum. Cap,
#38149, Flush w/
Ground
Lat: 40.290272°
Long: 104.395536°
SP NAD 83
(CO. NORTH)
N: 1350506.24
E: 3308094.88

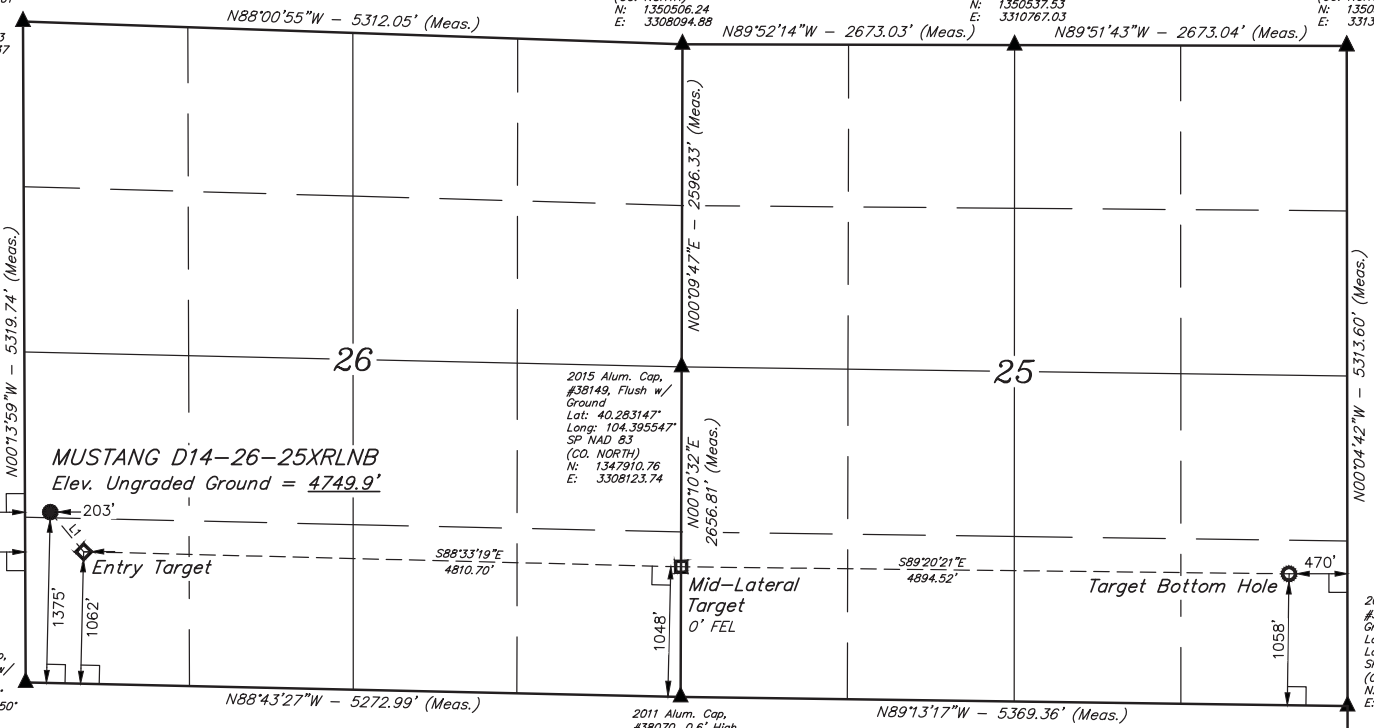
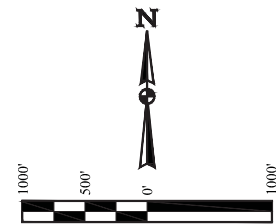
2015 Alum. Cap,
#38149, Flush w/
Ground
Lat: 40.290267°
Long: 104.385956°
SP NAD 83
(CO. NORTH)
N: 1350537.53
E: 3310767.03

2012 Alum. Cap,
#34995, 0.2' High
Ground
Lat: 40.290258°
Long: 104.376375°
SP NAD 83
(CO. NORTH)
N: 1350568.40
E: 3313439.18

2007 Alum. Cap,
#38019, Flush w/
Ground
Lat: 40.276156°
Long: 104.414450°
SP NAD 83
(CO. NORTH)
N: 1345298.56
E: 3302881.27

2011 Alum. Cap,
#38070, 0.6' High
Ground
Lat: 40.275856°
Long: 104.395561°
SP NAD 83
(CO. NORTH)
N: 1345254.80
E: 3308152.69

2011 Alum. Cap,
#38070, 0.3' Below
Ground
Lat: 40.275678°
Long: 104.376325°
SP NAD 83
(CO. NORTH)
N: 1345256.83
E: 3313520.63



LINE TABLE		
LINE	DIRECTION	LENGTH
L1	S40°02'45"E	416.71'

- LEGEND:
- └─┘ = 90° SYMBOL
 - = PROPOSED WELLHEAD.
 - ◆ = ENTRY TARGET.
 - ◻ = MID-LATERAL TARGET.
 - = TARGET BOTTOM HOLE.
 - ▲ = SECTION CORNERS LOCATED. (NAD 83)

PDOP = 1.9

NAD 83 (SURFACE LOCATION)	NAD 83 (ENTRY TARGET)	NAD 83 (MID-LATERAL TARGET)	NAD 83 (TARGET BOTTOM HOLE)
LATITUDE = 40°16'47.71" (40.279919)	LATITUDE = 40°16'44.56" (40.279044)	LATITUDE = 40°16'43.44" (40.278733)	LATITUDE = 40°16'42.95" (40.278597)
LONGITUDE = 104°24'49.51" (104.413753)	LONGITUDE = 104°24'46.04" (104.412789)	LONGITUDE = 104°23'44.00" (104.395556)	LONGITUDE = 104°22'40.87" (104.378019)
STATE PLANE NAD 83 (CO. NORTH)	STATE PLANE NAD 83 (CO. NORTH)	STATE PLANE NAD 83 (CO. NORTH)	STATE PLANE NAD 83 (CO. NORTH)
N: 1346671.72 E: 3303059.67	N: 1346356.57 E: 3303332.14	N: 1346302.46 E: 3308141.27	N: 1346314.36 E: 3313034.48

CERTIFICATION AND REGISTERED SURVEYOR SEAL

THIS IS TO CERTIFY THAT THE ABOVE AND ON PREPARED AND PUBLISHED NOTES OF ACTUAL SURVEYS MADE AND CONDUCTED UNDER MY SUPERVISION AND THAT THE SAME ARE TRUE AND CORRECT TO THE BEST OF MY KNOWLEDGE AND BELIEF.

REGISTERED LAND SURVEYOR
REGISTRATION NO. 28285
STATE OF COLORADO

REV: 3 10-30-17 D.COX (ENTRY TARGET MOVE)

UJINTAH ENGINEERING & LAND SURVEYING

UELS, LLC
Corporate Office * 85 South 200 East
Vernal, UT 84078 * (435) 789-1017

SURVEYED BY	CHAD MEIERS	09-06-17	SCALE
DRAWN BY	M.F.D.	11-21-16	1" = 1000'

WELL LOCATION PLAT