

BONANZA CREEK OIL COMPANY

Location: COLORADO Slot: SLOT#02 MUSTANG D14-26-25XRLNB (1375'FSL & 203'FWL, SEC.26)
 Field: WELD COUNTY Well: MUSTANG D14-26-25XRLNB
 Facility: SEC.26-T04N-R63W Wellbore: MUSTANG D14-26-25XRLNB PWB

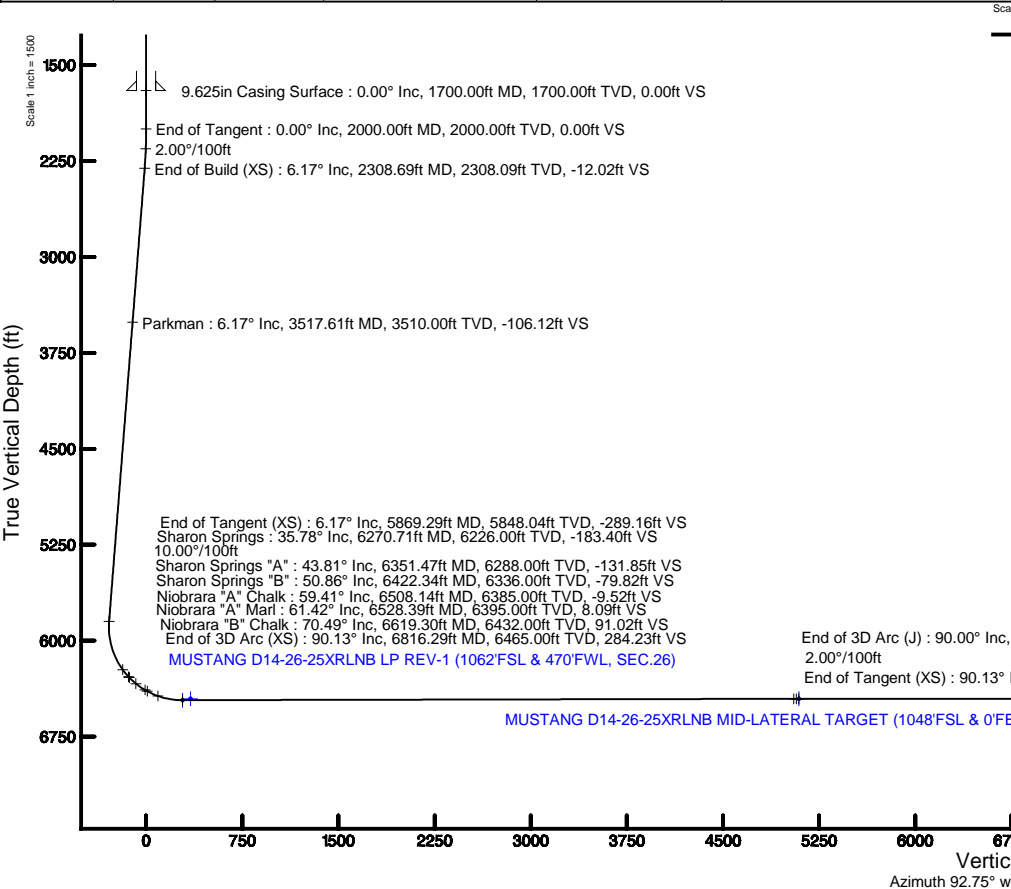
Plot reference wellpath is MUSTANG D14-26-25XRLNB PWB (REV-A.0)		Grid System: NAD83 / Lambert Colorado SP, Northern Zone (501), US feet
True vertical depths are referenced to XTREME 19 (17KB) (RKB)		* = Wellpath was transformed from a different geoidic datum
Measured depths are referenced to XTREME 19 (17KB) (RKB)		North Reference: True north
XTREME 19 (17KB) (RKB) to Mean Sea Level: 4767 feet		Scale: True distance
Mean Sea Level to Mud line (At Slot: SLOT#02 MUSTANG D14-26-25XRLNB (1375'FSL & 203'FWL, SEC.26)): 0 feet		Depths are in feet
Coordinates are in feet referenced to Slot		Created by: ingjamm on 2017-10-16
		Database: WA_DEN_Denver_Defn

Location Information

Facility Name		Grid East (US ft)	Grid North (US ft)	Latitude	Longitude	
SEC.26-T04N-R63W		3303028.081	1348847.580	40°17'09.210"N	104°24'49.570"W	
Slot	Local N (ft)	Local E (ft)	Grid East (US ft)	Grid North (US ft)	Latitude	Longitude
SLOT#02 MUSTANG D14-26-25XRLNB (1375'FSL & 203'FWL, SEC.26)	-2175.71	4.65	3303059.381	1346672.189	40°16'47.710"N	104°24'49.510"W
XTREME 19 (17KB) (RKB) to Mud line (At Slot: SLOT#02 MUSTANG D14-26-25XRLNB (1375'FSL & 203'FWL, SEC.26))					4767ft	
Mean Sea Level to Mud line (At Slot: SLOT#02 MUSTANG D14-26-25XRLNB (1375'FSL & 203'FWL, SEC.26))					0ft	
XTREME 19 (17KB) (RKB) to Mean Sea Level					4767ft	

Survey Program

Start MD (ft)	End MD (ft)	Tool	Model	Log Name/Comment	Wellbore
17.00	16519.04	BHI NaviTrak	BHI NaviTrak (Standard)		MUSTANG D14-26-25XRLNB PWB

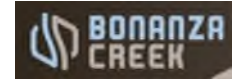


Well Profile Data

Design Comment	MD (ft)	Inc (°)	Az (°)	TVD (ft)	Local N (ft)	Local E (ft)	DLS (°/100ft)	VS (ft)
Tie On	17.00	0.000	229.118	17.00	0.00	0.00	0.00	0.00
End of Tangent	2000.00	0.000	229.118	2000.00	0.00	0.00	0.00	0.00
End of Build (XS)	2308.69	6.174	229.118	2308.09	-10.87	-12.56	2.00	-12.02
End of Tangent (XS)	5869.29	6.174	229.118	5848.04	-261.50	-302.07	0.00	-289.16
End of 3D Arc (XS)	6816.29	90.132	91.335	6465.00	-319.78	269.17	10.00	284.23
End of Tangent (XS)	11586.68	90.132	91.335	6454.04	-430.94	5038.26	0.00	5053.14
End of 3D Arc (J)	11625.84	90.000	90.563	6454.00	-431.58	5077.41	2.00	5092.28
End of Tangent (J)	16519.04	90.000	90.563	6454.00	-479.68	9970.37	0.00	9981.91

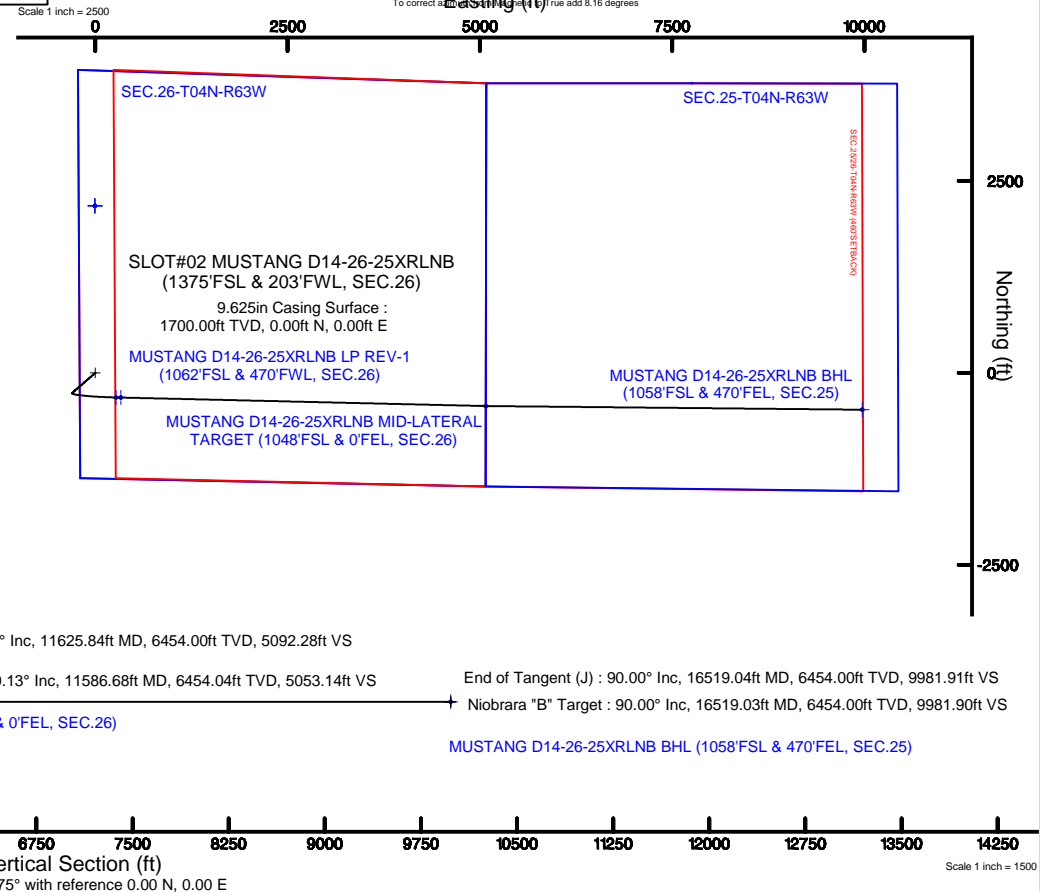
Bottom Hole Location

MD (ft)	Inc (°)	Az (°)	TVD (ft)	Local N (ft)	Local E (ft)	Grid East (US ft)	Grid North (US ft)	Latitude	Longitude
16519.04	90.000	90.563	6454.00	-479.68	9970.37	3313034.43	1346314.69	40°16'42.950"N	104°22'40.870"W



BGGM (1900.0 to 2019.0) Dip: 66.82° Field: 52371.6 nT
 Magnetic North is 8.16 degrees East of True North (at 9/28/2017)

To correct a magnetic bearing to true add 8.16 degrees





Planned Wellpath Report

MUSTANG D14-26-25XRLNB PWP (REV-A.0)

Page 1 of 10



REFERENCE WELLPATH IDENTIFICATION			
Operator	BONANZA CREEK OIL COMPANY	Slot	SLOT#02 MUSTANG D14-26-25XRLNB (1375'FSL & 203'FWL, SEC.26)
Area	COLORADO	Well	MUSTANG D14-26-25XRLNB
Field	WELD COUNTY	Wellbore	MUSTANG D14-26-25XRLNB PWB
Facility	SEC.26-T04N-R63W		

REPORT SETUP INFORMATION			
Projection System	NAD83 / Lambert Colorado SP, Northern Zone (501), US feet	Software System	WellArchitect® 5.0
North Reference	True	User	Ingmjmr
Scale	0.999957	Report Generated	10/16/2017 at 12:55:03 PM
Convergence at slot	0.71° East	Database/Source file	WA_DEN_Denver_Defn/MUSTANG_D14-26-25XRLNB_PWP_REV-A.0_.xml

WELLPATH LOCATION						
	Local coordinates		Grid coordinates		Geographic coordinates	
	North[ft]	East[ft]	Easting[US ft]	Northing[US ft]	Latitude	Longitude
Slot Location	-2175.71	4.65	3303059.38	1346672.19	40°16'47.710"N	104°24'49.510"W
Facility Reference Pt			3303028.08	1348847.58	40°17'09.210"N	104°24'49.570"W
Field Reference Pt			3224525.77	1254425.87	40°01'44.400"N	104°41'53.556"W

WELLPATH DATUM			
Calculation method	Minimum curvature	XTREME 19 (17'KB) (RKB) to Facility Vertical Datum	4767.00ft
Horizontal Reference Pt	Slot	XTREME 19 (17'KB) (RKB) to Mean Sea Level	4767.00ft
Vertical Reference Pt	XTREME 19 (17'KB) (RKB)	XTREME 19 (17'KB) (RKB) to Mud Line at Slot (SLOT#02 MUSTANG D14-26-25XRLNB (1375'FSL & 203'FWL, SEC.26))	4767.00ft
MD Reference Pt	XTREME 19 (17'KB) (RKB)	Section Origin	N 0.00, E 0.00 ft
Field Vertical Reference	Mean Sea Level	Section Azimuth	92.75°



Planned Wellpath Report

MUSTANG D14-26-25XRLNB PWP (REV-A.0)

Page 2 of 10



REFERENCE WELLPATH IDENTIFICATION			
Operator	BONANZA CREEK OIL COMPANY	Slot	SLOT#02 MUSTANG D14-26-25XRLNB (1375'FSL & 203'FWL, SEC.26)
Area	COLORADO	Well	MUSTANG D14-26-25XRLNB
Field	WELD COUNTY	Wellbore	MUSTANG D14-26-25XRLNB PWB
Facility	SEC.26-T04N-R63W		

WELLPATH DATA (182 stations) † = interpolated/extrapolated station										
MD [ft]	Inclination [°]	Azimuth [°]	TVD [ft]	Vert Sect [ft]	North [ft]	East [ft]	Latitude	Longitude	DLS [°/100ft]	Comments
0.00†	0.000	229.118	0.00	0.00	0.00	0.00	40°16'47.710"N	104°24'49.510"W	0.00	
17.00	0.000	229.118	17.00	0.00	0.00	0.00	40°16'47.710"N	104°24'49.510"W	0.00	Tie On
117.00†	0.000	229.118	117.00	0.00	0.00	0.00	40°16'47.710"N	104°24'49.510"W	0.00	
217.00†	0.000	229.118	217.00	0.00	0.00	0.00	40°16'47.710"N	104°24'49.510"W	0.00	
317.00†	0.000	229.118	317.00	0.00	0.00	0.00	40°16'47.710"N	104°24'49.510"W	0.00	
417.00†	0.000	229.118	417.00	0.00	0.00	0.00	40°16'47.710"N	104°24'49.510"W	0.00	
517.00†	0.000	229.118	517.00	0.00	0.00	0.00	40°16'47.710"N	104°24'49.510"W	0.00	
617.00†	0.000	229.118	617.00	0.00	0.00	0.00	40°16'47.710"N	104°24'49.510"W	0.00	
717.00†	0.000	229.118	717.00	0.00	0.00	0.00	40°16'47.710"N	104°24'49.510"W	0.00	
817.00†	0.000	229.118	817.00	0.00	0.00	0.00	40°16'47.710"N	104°24'49.510"W	0.00	
917.00†	0.000	229.118	917.00	0.00	0.00	0.00	40°16'47.710"N	104°24'49.510"W	0.00	
1017.00†	0.000	229.118	1017.00	0.00	0.00	0.00	40°16'47.710"N	104°24'49.510"W	0.00	
1117.00†	0.000	229.118	1117.00	0.00	0.00	0.00	40°16'47.710"N	104°24'49.510"W	0.00	
1217.00†	0.000	229.118	1217.00	0.00	0.00	0.00	40°16'47.710"N	104°24'49.510"W	0.00	
1317.00†	0.000	229.118	1317.00	0.00	0.00	0.00	40°16'47.710"N	104°24'49.510"W	0.00	
1417.00†	0.000	229.118	1417.00	0.00	0.00	0.00	40°16'47.710"N	104°24'49.510"W	0.00	
1517.00†	0.000	229.118	1517.00	0.00	0.00	0.00	40°16'47.710"N	104°24'49.510"W	0.00	
1617.00†	0.000	229.118	1617.00	0.00	0.00	0.00	40°16'47.710"N	104°24'49.510"W	0.00	
1717.00†	0.000	229.118	1717.00	0.00	0.00	0.00	40°16'47.710"N	104°24'49.510"W	0.00	
1817.00†	0.000	229.118	1817.00	0.00	0.00	0.00	40°16'47.710"N	104°24'49.510"W	0.00	
1917.00†	0.000	229.118	1917.00	0.00	0.00	0.00	40°16'47.710"N	104°24'49.510"W	0.00	
2000.00	0.000	229.118	2000.00	0.00	0.00	0.00	40°16'47.710"N	104°24'49.510"W	0.00	End of Tangent
2017.00†	0.340	229.118	2017.00	-0.04	-0.03	-0.04	40°16'47.710"N	104°24'49.510"W	2.00	
2117.00†	2.340	229.118	2116.97	-1.73	-1.56	-1.81	40°16'47.695"N	104°24'49.533"W	2.00	
2217.00†	4.340	229.118	2216.79	-5.95	-5.38	-6.21	40°16'47.657"N	104°24'49.590"W	2.00	
2308.69	6.174	229.118	2308.09	-12.02	-10.87	-12.56	40°16'47.603"N	104°24'49.672"W	2.00	End of Build (XS)
2317.00†	6.174	229.118	2316.35	-12.67	-11.46	-13.24	40°16'47.597"N	104°24'49.681"W	0.00	
2417.00†	6.174	229.118	2415.77	-20.45	-18.50	-21.37	40°16'47.527"N	104°24'49.786"W	0.00	
2517.00†	6.174	229.118	2515.19	-28.24	-25.54	-29.50	40°16'47.458"N	104°24'49.891"W	0.00	
2617.00†	6.174	229.118	2614.61	-36.02	-32.58	-37.63	40°16'47.388"N	104°24'49.996"W	0.00	



Planned Wellpath Report

MUSTANG D14-26-25XRLNB PWP (REV-A.0)

Page 3 of 10



REFERENCE WELLPATH IDENTIFICATION			
Operator	BONANZA CREEK OIL COMPANY	Slot	SLOT#02 MUSTANG D14-26-25XRLNB (1375'FSL & 203'FWL, SEC.26)
Area	COLORADO	Well	MUSTANG D14-26-25XRLNB
Field	WELD COUNTY	Wellbore	MUSTANG D14-26-25XRLNB PWB
Facility	SEC.26-T04N-R63W		

WELLPATH DATA (182 stations) † = interpolated/extrapolated station										
MD [ft]	Inclination [°]	Azimuth [°]	TVD [ft]	Vert Sect [ft]	North [ft]	East [ft]	Latitude	Longitude	DLS [°/100ft]	Comments
2717.00†	6.174	229.118	2714.03	-43.80	-39.62	-45.76	40°16'47.319"N	104°24'50.100"W	0.00	
2817.00†	6.174	229.118	2813.45	-51.59	-46.65	-53.89	40°16'47.249"N	104°24'50.205"W	0.00	
2917.00†	6.174	229.118	2912.87	-59.37	-53.69	-62.02	40°16'47.179"N	104°24'50.310"W	0.00	
3017.00†	6.174	229.118	3012.29	-67.16	-60.73	-70.15	40°16'47.110"N	104°24'50.415"W	0.00	
3117.00†	6.174	229.118	3111.71	-74.94	-67.77	-78.29	40°16'47.040"N	104°24'50.520"W	0.00	
3217.00†	6.174	229.118	3211.14	-82.72	-74.81	-86.42	40°16'46.971"N	104°24'50.625"W	0.00	
3317.00†	6.174	229.118	3310.56	-90.51	-81.85	-94.55	40°16'46.901"N	104°24'50.730"W	0.00	
3417.00†	6.174	229.118	3409.98	-98.29	-88.89	-102.68	40°16'46.832"N	104°24'50.835"W	0.00	
3517.00†	6.174	229.118	3509.40	-106.07	-95.93	-110.81	40°16'46.762"N	104°24'50.940"W	0.00	
3517.61†	6.174	229.118	3510.00	-106.12	-95.97	-110.86	40°16'46.762"N	104°24'50.940"W	0.00	Parkman
3617.00†	6.174	229.118	3608.82	-113.86	-102.97	-118.94	40°16'46.693"N	104°24'51.045"W	0.00	
3717.00†	6.174	229.118	3708.24	-121.64	-110.00	-127.07	40°16'46.623"N	104°24'51.150"W	0.00	
3817.00†	6.174	229.118	3807.66	-129.42	-117.04	-135.20	40°16'46.553"N	104°24'51.254"W	0.00	
3917.00†	6.174	229.118	3907.08	-137.21	-124.08	-143.33	40°16'46.484"N	104°24'51.359"W	0.00	
4017.00†	6.174	229.118	4006.50	-144.99	-131.12	-151.46	40°16'46.414"N	104°24'51.464"W	0.00	
4117.00†	6.174	229.118	4105.92	-152.77	-138.16	-159.60	40°16'46.345"N	104°24'51.569"W	0.00	
4217.00†	6.174	229.118	4205.34	-160.56	-145.20	-167.73	40°16'46.275"N	104°24'51.674"W	0.00	
4317.00†	6.174	229.118	4304.76	-168.34	-152.24	-175.86	40°16'46.206"N	104°24'51.779"W	0.00	
4417.00†	6.174	229.118	4404.18	-176.12	-159.28	-183.99	40°16'46.136"N	104°24'51.884"W	0.00	
4517.00†	6.174	229.118	4503.60	-183.91	-166.31	-192.12	40°16'46.066"N	104°24'51.989"W	0.00	
4617.00†	6.174	229.118	4603.02	-191.69	-173.35	-200.25	40°16'45.997"N	104°24'52.094"W	0.00	
4717.00†	6.174	229.118	4702.44	-199.47	-180.39	-208.38	40°16'45.927"N	104°24'52.199"W	0.00	
4817.00†	6.174	229.118	4801.86	-207.26	-187.43	-216.51	40°16'45.858"N	104°24'52.304"W	0.00	
4917.00†	6.174	229.118	4901.28	-215.04	-194.47	-224.64	40°16'45.788"N	104°24'52.408"W	0.00	
5017.00†	6.174	229.118	5000.70	-222.82	-201.51	-232.77	40°16'45.719"N	104°24'52.513"W	0.00	
5117.00†	6.174	229.118	5100.12	-230.61	-208.55	-240.91	40°16'45.649"N	104°24'52.618"W	0.00	
5217.00†	6.174	229.118	5199.54	-238.39	-215.59	-249.04	40°16'45.580"N	104°24'52.723"W	0.00	
5317.00†	6.174	229.118	5298.96	-246.17	-222.63	-257.17	40°16'45.510"N	104°24'52.828"W	0.00	
5417.00†	6.174	229.118	5398.38	-253.96	-229.66	-265.30	40°16'45.440"N	104°24'52.933"W	0.00	
5517.00†	6.174	229.118	5497.80	-261.74	-236.70	-273.43	40°16'45.371"N	104°24'53.038"W	0.00	



Planned Wellpath Report

MUSTANG D14-26-25XRLNB PWP (REV-A.0)

Page 4 of 10



REFERENCE WELLPATH IDENTIFICATION			
Operator	BONANZA CREEK OIL COMPANY	Slot	SLOT#02 MUSTANG D14-26-25XRLNB (1375'FSL & 203'FWL, SEC.26)
Area	COLORADO	Well	MUSTANG D14-26-25XRLNB
Field	WELD COUNTY	Wellbore	MUSTANG D14-26-25XRLNB PWB
Facility	SEC.26-T04N-R63W		

WELLPATH DATA (182 stations) † = interpolated/extrapolated station										
MD [ft]	Inclination [°]	Azimuth [°]	TVD [ft]	Vert Sect [ft]	North [ft]	East [ft]	Latitude	Longitude	DLS [°/100ft]	Comments
5617.00†	6.174	229.118	5597.22	-269.52	-243.74	-281.56	40°16'45.301"N	104°24'53.143"W	0.00	
5717.00†	6.174	229.118	5696.64	-277.31	-250.78	-289.69	40°16'45.232"N	104°24'53.248"W	0.00	
5817.00†	6.174	229.118	5796.06	-285.09	-257.82	-297.82	40°16'45.162"N	104°24'53.353"W	0.00	
5869.29	6.174	229.118	5848.04	-289.16	-261.50	-302.07	40°16'45.126"N	104°24'53.407"W	0.00	End of Tangent (XS)
5917.00†	4.163	178.544	5895.58	-290.89	-264.91	-303.97	40°16'45.092"N	104°24'53.432"W	10.00	
6017.00†	11.010	113.287	5994.78	-281.66	-272.34	-295.09	40°16'45.019"N	104°24'53.317"W	10.00	
6117.00†	20.609	102.491	6090.90	-255.30	-279.94	-269.07	40°16'44.944"N	104°24'52.982"W	10.00	
6217.00†	30.461	98.445	6181.03	-212.62	-287.48	-226.70	40°16'44.869"N	104°24'52.435"W	10.00	
6270.71†	35.785	97.133	6226.00	-183.40	-291.44	-197.63	40°16'44.830"N	104°24'52.060"W	10.00	Sharon Springs
6317.00†	40.381	96.248	6262.42	-154.92	-294.75	-169.28	40°16'44.797"N	104°24'51.694"W	10.00	
6351.47†	43.808	95.691	6288.00	-131.85	-297.15	-146.30	40°16'44.774"N	104°24'51.398"W	10.00	Sharon Springs "A"
6417.00†	50.329	94.802	6332.61	-83.95	-301.52	-98.55	40°16'44.730"N	104°24'50.782"W	10.00	
6422.34†	50.861	94.737	6336.00	-79.82	-301.86	-94.44	40°16'44.727"N	104°24'50.728"W	10.00	Sharon Springs "B"
6508.14†	59.406	93.808	6385.00	-9.52	-307.07	-24.30	40°16'44.676"N	104°24'49.824"W	10.00	Niobrara "A" Chalk
6517.00†	60.290	93.722	6389.45	-1.86	-307.57	-16.66	40°16'44.671"N	104°24'49.725"W	10.00	
6528.39†	61.425	93.614	6395.00	8.09	-308.21	-6.73	40°16'44.664"N	104°24'49.597"W	10.00	Niobrara "A" Marl
6617.00†	70.257	92.840	6431.23	88.86	-312.74	73.91	40°16'44.620"N	104°24'48.556"W	10.00	
6619.30†	70.486	92.821	6432.00	91.02	-312.84	76.07	40°16'44.619"N	104°24'48.528"W	10.00	Niobrara "B" Chalk
6717.00†	80.229	92.062	6456.67	185.43	-316.85	170.40	40°16'44.579"N	104°24'47.311"W	10.00	
6816.29	90.132	91.335	6465.00 [†]	284.23	-319.78	269.17	40°16'44.550"N	104°24'46.037"W	10.00	End of 3D Arc (XS)
6817.00†	90.132	91.335	6465.00	284.94	-319.79	269.89	40°16'44.550"N	104°24'46.028"W	0.00	
6917.00†	90.132	91.335	6464.77	384.91	-322.12	369.86	40°16'44.527"N	104°24'44.738"W	0.00	
7017.00†	90.132	91.335	6464.54	484.88	-324.45	469.83	40°16'44.504"N	104°24'43.448"W	0.00	
7117.00†	90.132	91.335	6464.31	584.85	-326.78	569.80	40°16'44.481"N	104°24'42.158"W	0.00	
7217.00†	90.132	91.335	6464.08	684.82	-329.11	669.78	40°16'44.458"N	104°24'40.868"W	0.00	
7317.00†	90.132	91.335	6463.85	784.79	-331.44	769.75	40°16'44.435"N	104°24'39.578"W	0.00	
7417.00†	90.132	91.335	6463.62	884.76	-333.77	869.72	40°16'44.412"N	104°24'38.289"W	0.00	
7517.00†	90.132	91.335	6463.39	984.72	-336.10	969.69	40°16'44.388"N	104°24'36.999"W	0.00	
7617.00†	90.132	91.335	6463.16	1084.69	-338.43	1069.67	40°16'44.365"N	104°24'35.709"W	0.00	
7717.00†	90.132	91.335	6462.93	1184.66	-340.76	1169.64	40°16'44.342"N	104°24'34.419"W	0.00	



Planned Wellpath Report

MUSTANG D14-26-25XRLNB PWP (REV-A.0)

Page 5 of 10



REFERENCE WELLPATH IDENTIFICATION			
Operator	BONANZA CREEK OIL COMPANY	Slot	SLOT#02 MUSTANG D14-26-25XRLNB (1375'FSL & 203'FWL, SEC.26)
Area	COLORADO	Well	MUSTANG D14-26-25XRLNB
Field	WELD COUNTY	Wellbore	MUSTANG D14-26-25XRLNB PWB
Facility	SEC.26-T04N-R63W		

WELLPATH DATA (182 stations) † = interpolated/extrapolated station										
MD [ft]	Inclination [°]	Azimuth [°]	TVD [ft]	Vert Sect [ft]	North [ft]	East [ft]	Latitude	Longitude	DLS [°/100ft]	Comments
7817.00†	90.132	91.335	6462.70	1284.63	-343.09	1269.61	40°16'44.319"N	104°24'33.129"W	0.00	
7917.00†	90.132	91.335	6462.47	1384.60	-345.42	1369.58	40°16'44.296"N	104°24'31.839"W	0.00	
8017.00†	90.132	91.335	6462.24	1484.57	-347.76	1469.56	40°16'44.273"N	104°24'30.549"W	0.00	
8117.00†	90.132	91.335	6462.01	1584.54	-350.09	1569.53	40°16'44.250"N	104°24'29.259"W	0.00	
8217.00†	90.132	91.335	6461.78	1684.51	-352.42	1669.50	40°16'44.227"N	104°24'27.970"W	0.00	
8317.00†	90.132	91.335	6461.55	1784.48	-354.75	1769.47	40°16'44.204"N	104°24'26.680"W	0.00	
8417.00†	90.132	91.335	6461.32	1884.45	-357.08	1869.45	40°16'44.181"N	104°24'25.390"W	0.00	
8517.00†	90.132	91.335	6461.09	1984.42	-359.41	1969.42	40°16'44.158"N	104°24'24.100"W	0.00	
8617.00†	90.132	91.335	6460.86	2084.38	-361.74	2069.39	40°16'44.135"N	104°24'22.810"W	0.00	
8717.00†	90.132	91.335	6460.64	2184.35	-364.07	2169.36	40°16'44.111"N	104°24'21.520"W	0.00	
8817.00†	90.132	91.335	6460.41	2284.32	-366.40	2269.34	40°16'44.088"N	104°24'20.230"W	0.00	
8917.00†	90.132	91.335	6460.18	2384.29	-368.73	2369.31	40°16'44.065"N	104°24'18.940"W	0.00	
9017.00†	90.132	91.335	6459.95	2484.26	-371.06	2469.28	40°16'44.042"N	104°24'17.651"W	0.00	
9117.00†	90.132	91.335	6459.72	2584.23	-373.39	2569.26	40°16'44.019"N	104°24'16.361"W	0.00	
9217.00†	90.132	91.335	6459.49	2684.20	-375.72	2669.23	40°16'43.996"N	104°24'15.071"W	0.00	
9317.00†	90.132	91.335	6459.26	2784.17	-378.05	2769.20	40°16'43.973"N	104°24'13.781"W	0.00	
9417.00†	90.132	91.335	6459.03	2884.14	-380.38	2869.17	40°16'43.950"N	104°24'12.491"W	0.00	
9517.00†	90.132	91.335	6458.80	2984.11	-382.71	2969.15	40°16'43.926"N	104°24'11.201"W	0.00	
9617.00†	90.132	91.335	6458.57	3084.08	-385.04	3069.12	40°16'43.903"N	104°24'09.911"W	0.00	
9717.00†	90.132	91.335	6458.34	3184.04	-387.37	3169.09	40°16'43.880"N	104°24'08.622"W	0.00	
9817.00†	90.132	91.335	6458.11	3284.01	-389.70	3269.06	40°16'43.857"N	104°24'07.332"W	0.00	
9917.00†	90.132	91.335	6457.88	3383.98	-392.03	3369.04	40°16'43.834"N	104°24'06.042"W	0.00	
10017.00†	90.132	91.335	6457.65	3483.95	-394.36	3469.01	40°16'43.811"N	104°24'04.752"W	0.00	
10117.00†	90.132	91.335	6457.42	3583.92	-396.69	3568.98	40°16'43.787"N	104°24'03.462"W	0.00	
10217.00†	90.132	91.335	6457.19	3683.89	-399.02	3668.95	40°16'43.764"N	104°24'02.172"W	0.00	
10317.00†	90.132	91.335	6456.96	3783.86	-401.35	3768.93	40°16'43.741"N	104°24'00.882"W	0.00	
10417.00†	90.132	91.335	6456.73	3883.83	-403.68	3868.90	40°16'43.718"N	104°23'59.592"W	0.00	
10517.00†	90.132	91.335	6456.50	3983.80	-406.01	3968.87	40°16'43.695"N	104°23'58.303"W	0.00	
10617.00†	90.132	91.335	6456.27	4083.77	-408.34	4068.84	40°16'43.672"N	104°23'57.013"W	0.00	
10717.00†	90.132	91.335	6456.04	4183.73	-410.67	4168.82	40°16'43.648"N	104°23'55.723"W	0.00	



Planned Wellpath Report

MUSTANG D14-26-25XRLNB PWP (REV-A.0)

Page 6 of 10



REFERENCE WELLPATH IDENTIFICATION			
Operator	BONANZA CREEK OIL COMPANY	Slot	SLOT#02 MUSTANG D14-26-25XRLNB (1375'FSL & 203'FWL, SEC.26)
Area	COLORADO	Well	MUSTANG D14-26-25XRLNB
Field	WELD COUNTY	Wellbore	MUSTANG D14-26-25XRLNB PWB
Facility	SEC.26-T04N-R63W		

WELLPATH DATA (182 stations) † = interpolated/extrapolated station										
MD [ft]	Inclination [°]	Azimuth [°]	TVD [ft]	Vert Sect [ft]	North [ft]	East [ft]	Latitude	Longitude	DLS [°/100ft]	Comments
10817.00†	90.132	91.335	6455.81	4283.70	-413.00	4268.79	40°16'43.625"N	104°23'54.433"W	0.00	
10917.00†	90.132	91.335	6455.58	4383.67	-415.33	4368.76	40°16'43.602"N	104°23'53.143"W	0.00	
11017.00†	90.132	91.335	6455.35	4483.64	-417.66	4468.73	40°16'43.579"N	104°23'51.853"W	0.00	
11117.00†	90.132	91.335	6455.12	4583.61	-419.99	4568.71	40°16'43.556"N	104°23'50.563"W	0.00	
11217.00†	90.132	91.335	6454.89	4683.58	-422.32	4668.68	40°16'43.532"N	104°23'49.274"W	0.00	
11317.00†	90.132	91.335	6454.66	4783.55	-424.65	4768.65	40°16'43.509"N	104°23'47.984"W	0.00	
11417.00†	90.132	91.335	6454.43	4883.52	-426.98	4868.62	40°16'43.486"N	104°23'46.694"W	0.00	
11517.00†	90.132	91.335	6454.20	4983.49	-429.31	4968.60	40°16'43.463"N	104°23'45.404"W	0.00	
11586.68	90.132	91.335	6454.04	5053.14	-430.94	5038.26	40°16'43.446"N	104°23'44.505"W	0.00	End of Tangent (XS)
11617.00†	90.030	90.737	6454.00	5083.45	-431.48	5068.57	40°16'43.441"N	104°23'44.114"W	2.00	
11625.84	90.000	90.563	6454.00†	5092.28	-431.58	5077.41	40°16'43.440"N	104°23'44.000"W	2.00	End of 3D Arc (J)
11717.00†	90.000	90.563	6454.00	5183.38	-432.48	5168.57	40°16'43.431"N	104°23'42.824"W	0.00	
11817.00†	90.000	90.563	6454.00	5283.31	-433.46	5268.56	40°16'43.421"N	104°23'41.534"W	0.00	
11917.00†	90.000	90.563	6454.00	5383.23	-434.45	5368.56	40°16'43.411"N	104°23'40.244"W	0.00	
12017.00†	90.000	90.563	6454.00	5483.16	-435.43	5468.55	40°16'43.401"N	104°23'38.953"W	0.00	
12117.00†	90.000	90.563	6454.00	5583.09	-436.41	5568.55	40°16'43.391"N	104°23'37.663"W	0.00	
12217.00†	90.000	90.563	6454.00	5683.01	-437.40	5668.54	40°16'43.381"N	104°23'36.373"W	0.00	
12317.00†	90.000	90.563	6454.00	5782.94	-438.38	5768.54	40°16'43.371"N	104°23'35.083"W	0.00	
12417.00†	90.000	90.563	6454.00	5882.87	-439.36	5868.53	40°16'43.361"N	104°23'33.793"W	0.00	
12517.00†	90.000	90.563	6454.00	5982.79	-440.34	5968.53	40°16'43.351"N	104°23'32.503"W	0.00	
12617.00†	90.000	90.563	6454.00	6082.72	-441.33	6068.52	40°16'43.342"N	104°23'31.212"W	0.00	
12717.00†	90.000	90.563	6454.00	6182.65	-442.31	6168.52	40°16'43.332"N	104°23'29.922"W	0.00	
12817.00†	90.000	90.563	6454.00	6282.58	-443.29	6268.51	40°16'43.322"N	104°23'28.632"W	0.00	
12917.00†	90.000	90.563	6454.00	6382.50	-444.28	6368.51	40°16'43.312"N	104°23'27.342"W	0.00	
13017.00†	90.000	90.563	6454.00	6482.43	-445.26	6468.51	40°16'43.302"N	104°23'26.052"W	0.00	
13117.00†	90.000	90.563	6454.00	6582.36	-446.24	6568.50	40°16'43.292"N	104°23'24.762"W	0.00	
13217.00†	90.000	90.563	6454.00	6682.28	-447.23	6668.50	40°16'43.282"N	104°23'23.471"W	0.00	
13317.00†	90.000	90.563	6454.00	6782.21	-448.21	6768.49	40°16'43.272"N	104°23'22.181"W	0.00	
13417.00†	90.000	90.563	6454.00	6882.14	-449.19	6868.49	40°16'43.262"N	104°23'20.891"W	0.00	
13517.00†	90.000	90.563	6454.00	6982.06	-450.17	6968.48	40°16'43.252"N	104°23'19.601"W	0.00	



Planned Wellpath Report

MUSTANG D14-26-25XRLNB PWP (REV-A.0)

Page 7 of 10



REFERENCE WELLPATH IDENTIFICATION			
Operator	BONANZA CREEK OIL COMPANY	Slot	SLOT#02 MUSTANG D14-26-25XRLNB (1375'FSL & 203'FWL, SEC.26)
Area	COLORADO	Well	MUSTANG D14-26-25XRLNB
Field	WELD COUNTY	Wellbore	MUSTANG D14-26-25XRLNB PWB
Facility	SEC.26-T04N-R63W		

WELLPATH DATA (182 stations) † = interpolated/extrapolated station										
MD [ft]	Inclination [°]	Azimuth [°]	TVD [ft]	Vert Sect [ft]	North [ft]	East [ft]	Latitude	Longitude	DLS [°/100ft]	Comments
13617.00†	90.000	90.563	6454.00	7081.99	-451.16	7068.48	40°16'43.242"N	104°23'18.311"W	0.00	
13717.00†	90.000	90.563	6454.00	7181.92	-452.14	7168.47	40°16'43.232"N	104°23'17.021"W	0.00	
13817.00†	90.000	90.563	6454.00	7281.84	-453.12	7268.47	40°16'43.222"N	104°23'15.731"W	0.00	
13917.00†	90.000	90.563	6454.00	7381.77	-454.11	7368.46	40°16'43.212"N	104°23'14.440"W	0.00	
14017.00†	90.000	90.563	6454.00	7481.70	-455.09	7468.46	40°16'43.202"N	104°23'13.150"W	0.00	
14117.00†	90.000	90.563	6454.00	7581.62	-456.07	7568.45	40°16'43.192"N	104°23'11.860"W	0.00	
14217.00†	90.000	90.563	6454.00	7681.55	-457.05	7668.45	40°16'43.182"N	104°23'10.570"W	0.00	
14317.00†	90.000	90.563	6454.00	7781.48	-458.04	7768.44	40°16'43.172"N	104°23'09.280"W	0.00	
14417.00†	90.000	90.563	6454.00	7881.41	-459.02	7868.44	40°16'43.162"N	104°23'07.990"W	0.00	
14517.00†	90.000	90.563	6454.00	7981.33	-460.00	7968.43	40°16'43.152"N	104°23'06.699"W	0.00	
14617.00†	90.000	90.563	6454.00	8081.26	-460.99	8068.43	40°16'43.142"N	104°23'05.409"W	0.00	
14717.00†	90.000	90.563	6454.00	8181.19	-461.97	8168.42	40°16'43.132"N	104°23'04.119"W	0.00	
14817.00†	90.000	90.563	6454.00	8281.11	-462.95	8268.42	40°16'43.122"N	104°23'02.829"W	0.00	
14917.00†	90.000	90.563	6454.00	8381.04	-463.94	8368.41	40°16'43.111"N	104°23'01.539"W	0.00	
15017.00†	90.000	90.563	6454.00	8480.97	-464.92	8468.41	40°16'43.101"N	104°23'00.249"W	0.00	
15117.00†	90.000	90.563	6454.00	8580.89	-465.90	8568.40	40°16'43.091"N	104°22'58.958"W	0.00	
15217.00†	90.000	90.563	6454.00	8680.82	-466.88	8668.40	40°16'43.081"N	104°22'57.668"W	0.00	
15317.00†	90.000	90.563	6454.00	8780.75	-467.87	8768.39	40°16'43.071"N	104°22'56.378"W	0.00	
15417.00†	90.000	90.563	6454.00	8880.67	-468.85	8868.39	40°16'43.061"N	104°22'55.088"W	0.00	
15517.00†	90.000	90.563	6454.00	8980.60	-469.83	8968.38	40°16'43.051"N	104°22'53.798"W	0.00	
15617.00†	90.000	90.563	6454.00	9080.53	-470.82	9068.38	40°16'43.041"N	104°22'52.508"W	0.00	
15717.00†	90.000	90.563	6454.00	9180.45	-471.80	9168.37	40°16'43.031"N	104°22'51.218"W	0.00	
15817.00†	90.000	90.563	6454.00	9280.38	-472.78	9268.37	40°16'43.021"N	104°22'49.927"W	0.00	
15917.00†	90.000	90.563	6454.00	9380.31	-473.76	9368.36	40°16'43.011"N	104°22'48.637"W	0.00	
16017.00†	90.000	90.563	6454.00	9480.24	-474.75	9468.36	40°16'43.001"N	104°22'47.347"W	0.00	
16117.00†	90.000	90.563	6454.00	9580.16	-475.73	9568.36	40°16'42.991"N	104°22'46.057"W	0.00	
16217.00†	90.000	90.563	6454.00	9680.09	-476.71	9668.35	40°16'42.981"N	104°22'44.767"W	0.00	
16317.00†	90.000	90.563	6454.00	9780.02	-477.70	9768.35	40°16'42.970"N	104°22'43.477"W	0.00	
16417.00†	90.000	90.563	6454.00	9879.94	-478.68	9868.34	40°16'42.960"N	104°22'42.186"W	0.00	
16517.00†	90.000	90.563	6454.00	9979.87	-479.66	9968.34	40°16'42.950"N	104°22'40.896"W	0.00	



Planned Wellpath Report

MUSTANG D14-26-25XRLNB PWP (REV-A.0)

Page 8 of 10



REFERENCE WELLPATH IDENTIFICATION			
Operator	BONANZA CREEK OIL COMPANY	Slot	SLOT#02 MUSTANG D14-26-25XRLNB (1375'FSL & 203'FWL, SEC.26)
Area	COLORADO	Well	MUSTANG D14-26-25XRLNB
Field	WELD COUNTY	Wellbore	MUSTANG D14-26-25XRLNB PWB
Facility	SEC.26-T04N-R63W		

WELLPATH DATA (182 stations) † = interpolated/extrapolated station										
MD [ft]	Inclination [°]	Azimuth [°]	TVD [ft]	Vert Sect [ft]	North [ft]	East [ft]	Latitude	Longitude	DLS [°/100ft]	Comments
16519.03†	90.000	90.563	6454.00	9981.90	-479.68	9970.37	40°16'42.950"N	104°22'40.870"W	0.00	Niobrara "B" Target
16519.04	90.000	90.563	6454.00 ³	9981.91	-479.68	9970.37	40°16'42.950"N	104°22'40.870"W	0.00	End of Tangent (J)

HOLE & CASING SECTIONS									
- Ref Wellbore: MUSTANG D14-26-25XRLNB PWB					Ref Wellpath: MUSTANG D14-26-25XRLNB PWP (REV-A.0)				
String/Diameter	Start MD [ft]	End MD [ft]	Interval [ft]	Start TVD [ft]	End TVD [ft]	Start N/S [ft]	Start E/W [ft]	End N/S [ft]	End E/W [ft]
9.625in Casing Surface	17.00	1700.00	1683.00	17.00	1700.00	0.00	0.00	0.00	0.00
8.5in Open Hole	1700.00	16519.04	14819.04	1700.00	N/A	0.00	0.00	N/A	N/A

TARGETS									
Name	MD [ft]	TVD [ft]	North [ft]	East [ft]	Grid East [US ft]	Grid North [US ft]	Latitude	Longitude	Shape
SEC.26-T04N-R63W		0.00	2175.71	-4.65	3303028.08	1348847.58	40°17'09.210"N	104°24'49.570"W	polygon
3) MUSTANG D14-26-25XRLNB BHL (1058'FSL & 470'FEL, SEC.25)	16519.04	6454.00	-479.68	9970.37	3313034.43	1346314.69	40°16'42.950"N	104°22'40.870"W	point
MUSTANG D14-26-25XRLNB LP (1062'FSL & 531'FWL, SEC.26)		6454.00	-319.78	330.17	3303393.43	1346356.50	40°16'44.550"N	104°24'45.250"W	point
2) MUSTANG D14-26-25XRLNB MID-LATERAL TARGET (1048'FSL & 0'FEL, SEC.26)	11625.84	6454.00	-431.58	5077.41	3308141.47	1346302.85	40°16'43.440"N	104°23'44.000"W	point
1) MUSTANG D14-26-25XRLNB LP REV-1 (1062'FSL & 470'FWL, SEC.26)	6816.29	6465.00	-319.78	269.17	3303332.44	1346355.75	40°16'44.550"N	104°24'46.037"W	point
SEC.25/26-T04N-R63W (460'SETBACK)		6467.00	2175.71	-4.65	3303028.08	1348847.58	40°17'09.210"N	104°24'49.570"W	polygon



Planned Wellpath Report

MUSTANG D14-26-25XRLNB PWP (REV-A.0)
Page 9 of 10



REFERENCE WELLPATH IDENTIFICATION			
Operator	BONANZA CREEK OIL COMPANY	Slot	SLOT#02 MUSTANG D14-26-25XRLNB (1375'FSL & 203'FWL, SEC.26)
Area	COLORADO	Well	MUSTANG D14-26-25XRLNB
Field	WELD COUNTY	Wellbore	MUSTANG D14-26-25XRLNB PWB
Facility	SEC.26-T04N-R63W		

SURVEY PROGRAM -				
Ref Wellbore: MUSTANG D14-26-25XRLNB PWB		Ref Wellpath: MUSTANG D14-26-25XRLNB PWP (REV-A.0)		
Start MD [ft]	End MD [ft]	Positional Uncertainty Model	Log Name/Comment	Wellbore
17.00	16519.04	BHI NaviTrak (Standard)		MUSTANG D14-26-25XRLNB PWB



Planned Wellpath Report

MUSTANG D14-26-25XRLNB PWP (REV-A.0)

Page 10 of 10



REFERENCE WELLPATH IDENTIFICATION			
Operator	BONANZA CREEK OIL COMPANY	Slot	SLOT#02 MUSTANG D14-26-25XRLNB (1375'FSL & 203'FWL, SEC.26)
Area	COLORADO	Well	MUSTANG D14-26-25XRLNB
Field	WELD COUNTY	Wellbore	MUSTANG D14-26-25XRLNB PWB
Facility	SEC.26-T04N-R63W		

WELLPATH COMMENTS				
MD [ft]	Inclination [°]	Azimuth [°]	TVD [ft]	Comment
3517.61	6.174	229.118	3510.00	Parkman
6270.71	35.785	97.133	6226.00	Sharon Springs
6351.47	43.808	95.691	6288.00	Sharon Springs "A"
6422.34	50.861	94.737	6336.00	Sharon Springs "B"
6508.14	59.406	93.808	6385.00	Niobrara "A" Chalk
6528.39	61.425	93.614	6395.00	Niobrara "A" Marl
6619.30	70.486	92.821	6432.00	Niobrara "B" Chalk
16519.03	90.000	90.563	6454.00	Niobrara "B" Target

DESIGN COMMENTS				
MD [ft]	Inclination [°]	Azimuth [°]	TVD [ft]	Comment
17.00	0.000	229.118	17.00	Tie On
2000.00	0.000	229.118	2000.00	End of Tangent
2308.69	6.174	229.118	2308.09	End of Build (XS)
5869.29	6.174	229.118	5848.04	End of Tangent (XS)
6816.29	90.132	91.335	6465.00	End of 3D Arc (XS)
11586.68	90.132	91.335	6454.04	End of Tangent (XS)
11625.84	90.000	90.563	6454.00	End of 3D Arc (J)
16519.04	90.000	90.563	6454.00	End of Tangent (J)