

**PROJECT DETAILS: Weld County, CO NAD 83**

Geodetic System: US State Plane 1983  
 Datum: North American Datum 1983  
 Ellipsoid: GRS 1980  
 Zone: Colorado Northern Zone  
 System Datum: Mean Sea Level  
 Local North: True

Project: Weld County, CO NAD 83  
 Site: Anschutz State 5-62-35\_36 NWSW PAD  
 Well: Anschutz State 5-62-35-3225CN  
 Wellbore: OH  
 Design: Plan 2



Azimuths to True North  
 Magnetic North: 8.13°



Magnetic Field  
 Strength: 52472.0nT  
 Dip Angle: 66.93°  
 Date: 3/13/2017  
 Model: BGGM2016

Plan: Plan 2 (Anschutz State 5-62-35-3225CN/OH)

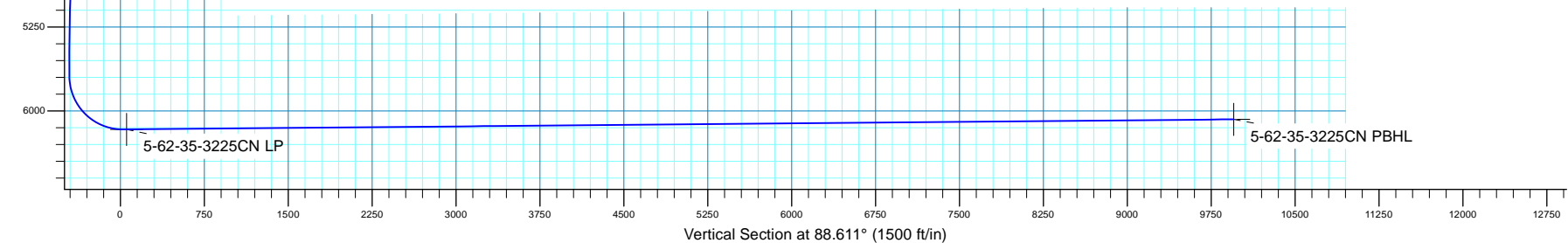
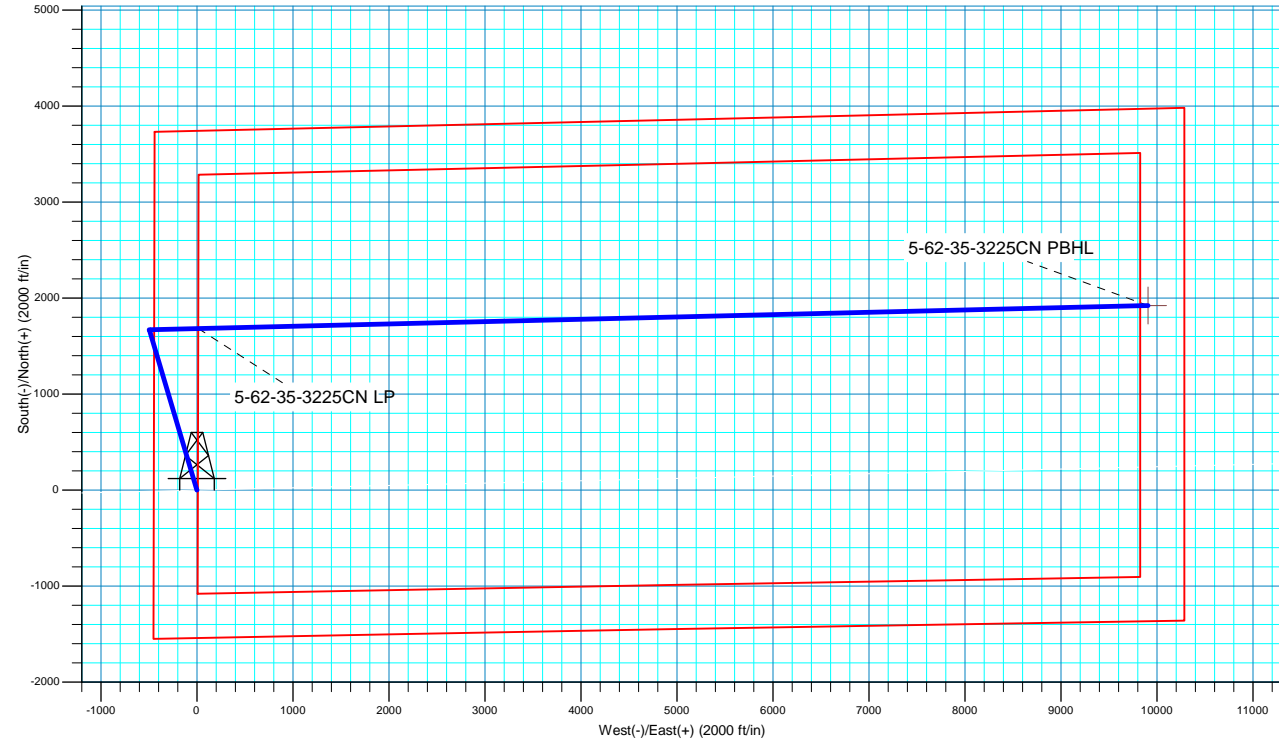
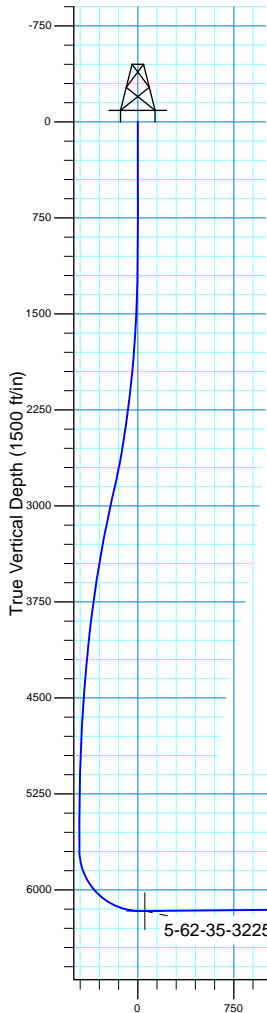
Created By: Seth Burstad Date: 9-20-2017

**SECTION DETAILS**

MD	Inc	Azi	TVD	+N/-S	+E/-W	Dleg	TFace	VSect
0.00	0.00	0.000	0.00	0.00	0.00	0.00	0.00	0.00
1000.00	0.00	0.000	1000.00	0.00	0.00	0.00	0.00	0.00
2981.30	40.02	343.455	2824.06	636.80	-189.17	2.02	343.45	-173.68
3281.72	40.02	343.455	3054.12	822.00	-244.19	0.00	0.00	-224.19
5923.44	0.00	0.000	5486.20	1671.06	-496.42	1.51	180.00	-455.77
6124.80	0.00	0.000	5687.56	1671.06	-496.42	0.00	0.00	-455.77
6879.13	90.52	88.615	6165.01	1682.70	-14.77	12.00	88.62	26.03
16805.14	90.52	88.615	6075.00	1922.57	9907.93	0.00	0.00	9951.63

**WELL DETAILS: Anschutz State 5-62-35-3225CN**

		GL 4580' & KB 20' @ 4600.00ft		4580.00		
+N/-S	+E/-W	Northing	Easting	Latitude	Longitude	
0.00	0.00	1373855.03	3334855.23	40° 21' 12.261 N	104° 17' 54.532 W	





**Bill Barrett Corporation**

## **Bill Barrett Corp.**

**Weld County, CO NAD 83**

**Anschutz State 5-62-35\_36 NWSW PAD**

**Anschutz State 5-62-35-3225CN**

**OH**

**Plan: Plan 2**

## **Standard Planning Report**

**20 September, 2017**



**Scientific Drilling**

[www.scientificdrilling.com](http://www.scientificdrilling.com)



<b>Database:</b>	Casper District	<b>Local Co-ordinate Reference:</b>	Well Anschutz State 5-62-35-3225CN
<b>Company:</b>	Bill Barrett Corp.	<b>TVD Reference:</b>	GL 4580' & KB 20' @ 4600.00ft
<b>Project:</b>	Weld County, CO NAD 83	<b>MD Reference:</b>	GL 4580' & KB 20' @ 4600.00ft
<b>Site:</b>	Anschutz State 5-62-35_36 NWSW PAD	<b>North Reference:</b>	True
<b>Well:</b>	Anschutz State 5-62-35-3225CN	<b>Survey Calculation Method:</b>	Minimum Curvature
<b>Wellbore:</b>	OH		
<b>Design:</b>	Plan 2		

<b>Project</b>	Weld County, CO NAD 83		
<b>Map System:</b>	US State Plane 1983	<b>System Datum:</b>	Mean Sea Level
<b>Geo Datum:</b>	North American Datum 1983		
<b>Map Zone:</b>	Colorado Northern Zone		

Site						Anschutz State 5-62-35_36 NWSW PAD, Site Center : Anschutz State 5-62-35-3225CN					
Site Position:				Northing:		1,373,855.06 usft		Latitude:		40° 21' 12.262 N	
From:		Lat/Long		Easting:		3,334,855.24 usft		Longitude:		104° 17' 54.532 W	
Position Uncertainty:		0.00 ft		Slot Radius:		13.200 in		Grid Convergence:		0.78	

Well	Anschutz State 5-62-35-3225CN, 1541' FSL 450' FWL Sec 35 T5N R62W					
Well Position	+N-S	-0.02 ft	Northing:	1,373,855.03 usft	Latitude:	40° 21' 12.261 N
	+E-W	0.00 ft	Easting:	3,334,855.24 usft	Longitude:	104° 17' 54.532 W
Position Uncertainty		0.00 ft	Wellhead Elevation:	0.00 ft	Ground Level:	4,580.00 ft

<b>Wellbore</b>	OH				
<b>Magnetics</b>	<b>Model Name</b>	<b>Sample Date</b>	<b>Declination (°)</b>	<b>Dip Angle (°)</b>	<b>Field Strength (nT)</b>
	BGGM2016	3/13/2017	8.13	66.93	52,472

<b>Design</b>	Plan 2			
<b>Audit Notes:</b>				
<b>Version:</b>	<b>Phase:</b>	PLAN	<b>Tie On Depth:</b>	0.00
<b>Vertical Section:</b>	<b>Depth From (TVD) (ft)</b>	<b>+N/-S (ft)</b>	<b>+E/-W (ft)</b>	<b>Direction (°)</b>
	0.00	0.00	0.00	88.611

<b>Plan Sections</b>										
Measured Depth (ft)	Inclination (°)	Azimuth (°)	Vertical Depth (ft)	+N/-S (ft)	+E/-W (ft)	Dogleg Rate (°/100ft)	Build Rate (°/100ft)	Turn Rate (°/100ft)	TFO (°)	Target
0.00	0.00	0.000	0.00	0.00	0.00	0.00	0.00	0.00	0.00	
1,000.00	0.00	0.000	1,000.00	0.00	0.00	0.00	0.00	0.00	0.00	
2,981.30	40.02	343.455	2,824.06	636.80	-189.17	2.02	2.02	0.00	343.45	
3,281.72	40.02	343.455	3,054.12	822.00	-244.19	0.00	0.00	0.00	0.00	
5,923.44	0.00	0.000	5,486.20	1,671.06	-496.42	1.52	-1.52	0.00	180.00	
6,124.80	0.00	0.000	5,687.56	1,671.06	-496.42	0.00	0.00	0.00	0.00	
6,879.13	90.52	88.615	6,165.01	1,682.70	-14.77	12.00	12.00	11.75	88.62	
16,805.14	90.52	88.615	6,075.00	1,922.57	9,907.93	0.00	0.00	0.00	0.00	5-62-35-3225CN PBI

<b>Database:</b>	Casper District	<b>Local Co-ordinate Reference:</b>	Well Anschutz State 5-62-35-3225CN
<b>Company:</b>	Bill Barrett Corp.	<b>TVD Reference:</b>	GL 4580' & KB 20' @ 4600.00ft
<b>Project:</b>	Weld County, CO NAD 83	<b>MD Reference:</b>	GL 4580' & KB 20' @ 4600.00ft
<b>Site:</b>	Anschutz State 5-62-35_36 NWSW PAD	<b>North Reference:</b>	True
<b>Well:</b>	Anschutz State 5-62-35-3225CN	<b>Survey Calculation Method:</b>	Minimum Curvature
<b>Wellbore:</b>	OH		
<b>Design:</b>	Plan 2		

Planned Survey									
Measured Depth (ft)	Inclination (°)	Azimuth (°)	Vertical Depth (ft)	+N/-S (ft)	+E/-W (ft)	Vertical Section (ft)	Dogleg Rate (°/100ft)	Build Rate (°/100ft)	Turn Rate (°/100ft)
0.00	0.00	0.000	0.00	0.00	0.00	0.00	0.00	0.00	0.00
100.00	0.00	0.000	100.00	0.00	0.00	0.00	0.00	0.00	0.00
200.00	0.00	0.000	200.00	0.00	0.00	0.00	0.00	0.00	0.00
300.00	0.00	0.000	300.00	0.00	0.00	0.00	0.00	0.00	0.00
400.00	0.00	0.000	400.00	0.00	0.00	0.00	0.00	0.00	0.00
500.00	0.00	0.000	500.00	0.00	0.00	0.00	0.00	0.00	0.00
600.00	0.00	0.000	600.00	0.00	0.00	0.00	0.00	0.00	0.00
700.00	0.00	0.000	700.00	0.00	0.00	0.00	0.00	0.00	0.00
800.00	0.00	0.000	800.00	0.00	0.00	0.00	0.00	0.00	0.00
900.00	0.00	0.000	900.00	0.00	0.00	0.00	0.00	0.00	0.00
1,000.00	0.00	0.000	1,000.00	0.00	0.00	0.00	0.00	0.00	0.00
<b>Start Build 2.02</b>									
1,100.00	2.02	343.455	1,099.98	1.69	-0.50	-0.46	2.02	2.02	0.00
1,200.00	4.04	343.455	1,199.83	6.76	-2.01	-1.84	2.02	2.02	0.00
1,300.00	6.06	343.455	1,299.44	15.19	-4.51	-4.14	2.02	2.02	0.00
1,400.00	8.08	343.455	1,398.68	26.99	-8.02	-7.36	2.02	2.02	0.00
1,500.00	10.10	343.455	1,497.41	42.14	-12.52	-11.49	2.02	2.02	0.00
1,600.00	12.12	343.455	1,595.54	60.61	-18.00	-16.53	2.02	2.02	0.00
1,700.00	14.14	343.455	1,692.92	82.38	-24.47	-22.47	2.02	2.02	0.00
1,800.00	16.16	343.455	1,789.44	107.43	-31.91	-29.30	2.02	2.02	0.00
1,900.00	18.18	343.455	1,884.97	135.73	-40.32	-37.02	2.02	2.02	0.00
2,000.00	20.20	343.455	1,979.41	167.24	-49.68	-45.61	2.02	2.02	0.00
2,100.00	22.22	343.455	2,072.63	201.92	-59.98	-55.07	2.02	2.02	0.00
2,200.00	24.24	343.455	2,164.52	239.72	-71.21	-65.38	2.02	2.02	0.00
2,300.00	26.26	343.455	2,254.96	280.61	-83.36	-76.53	2.02	2.02	0.00
2,400.00	28.28	343.455	2,343.84	324.53	-96.41	-88.51	2.02	2.02	0.00
2,500.00	30.30	343.455	2,431.05	371.43	-110.34	-101.30	2.02	2.02	0.00
2,600.00	32.32	343.455	2,516.49	421.24	-125.14	-114.89	2.02	2.02	0.00
2,700.00	34.34	343.455	2,600.03	473.91	-140.78	-129.25	2.02	2.02	0.00
2,800.00	36.36	343.455	2,681.59	529.37	-157.26	-144.38	2.02	2.02	0.00
2,900.00	38.38	343.455	2,761.06	587.55	-174.54	-160.25	2.02	2.02	0.00
2,981.30	40.02	343.455	2,824.06	636.80	-189.17	-173.68	2.02	2.02	0.00
<b>Start 300.42 hold at 2981.30 MD</b>									
3,000.00	40.02	343.455	2,838.38	648.33	-192.60	-176.83	0.00	0.00	0.00
3,100.00	40.02	343.455	2,914.96	709.97	-210.91	-193.64	0.00	0.00	0.00
3,200.00	40.02	343.455	2,991.54	771.62	-229.22	-210.45	0.00	0.00	0.00
3,281.72	40.02	343.455	3,054.12	822.00	-244.19	-224.19	0.00	0.00	0.00
<b>Start Drop -1.52</b>									
3,300.00	39.75	343.455	3,068.15	833.23	-247.53	-227.26	1.52	-1.52	0.00
3,400.00	38.23	343.455	3,145.88	893.54	-265.44	-243.71	1.52	-1.52	0.00
3,500.00	36.72	343.455	3,225.24	951.86	-282.77	-259.61	1.52	-1.52	0.00
3,600.00	35.20	343.455	3,306.18	1,008.15	-299.49	-274.96	1.52	-1.52	0.00
3,700.00	33.69	343.455	3,388.65	1,062.36	-315.59	-289.75	1.52	-1.52	0.00
3,800.00	32.17	343.455	3,472.58	1,114.47	-331.07	-303.96	1.52	-1.52	0.00
3,900.00	30.66	343.455	3,557.92	1,164.43	-345.92	-317.59	1.52	-1.52	0.00
4,000.00	29.14	343.455	3,644.61	1,212.21	-360.11	-330.62	1.52	-1.52	0.00
4,100.00	27.63	343.455	3,732.59	1,257.77	-373.65	-343.05	1.52	-1.52	0.00
4,200.00	26.11	343.455	3,821.79	1,301.09	-386.51	-354.86	1.52	-1.52	0.00
4,300.00	24.60	343.455	3,912.16	1,342.14	-398.71	-366.06	1.52	-1.52	0.00
4,400.00	23.08	343.455	4,003.62	1,380.88	-410.22	-376.62	1.52	-1.52	0.00
4,500.00	21.57	343.455	4,096.13	1,417.29	-421.03	-386.55	1.52	-1.52	0.00
4,600.00	20.05	343.455	4,189.60	1,451.34	-431.15	-395.84	1.52	-1.52	0.00
4,700.00	18.54	343.455	4,283.98	1,483.01	-440.56	-404.48	1.52	-1.52	0.00

<b>Database:</b>	Casper District	<b>Local Co-ordinate Reference:</b>	Well Anschutz State 5-62-35-3225CN
<b>Company:</b>	Bill Barrett Corp.	<b>TVD Reference:</b>	GL 4580' & KB 20' @ 4600.00ft
<b>Project:</b>	Weld County, CO NAD 83	<b>MD Reference:</b>	GL 4580' & KB 20' @ 4600.00ft
<b>Site:</b>	Anschutz State 5-62-35_36 NWSW PAD	<b>North Reference:</b>	True
<b>Well:</b>	Anschutz State 5-62-35-3225CN	<b>Survey Calculation Method:</b>	Minimum Curvature
<b>Wellbore:</b>	OH		
<b>Design:</b>	Plan 2		

Planned Survey									
Measured Depth (ft)	Inclination (°)	Azimuth (°)	Vertical Depth (ft)	+N/-S (ft)	+E/-W (ft)	Vertical Section (ft)	Dogleg Rate (°/100ft)	Build Rate (°/100ft)	Turn Rate (°/100ft)
4,800.00	17.02	343.455	4,379.21	1,512.28	-449.25	-412.46	1.52	-1.52	0.00
4,900.00	15.51	343.455	4,475.20	1,539.12	-457.23	-419.78	1.52	-1.52	0.00
5,000.00	13.99	343.455	4,571.90	1,563.52	-464.47	-426.44	1.52	-1.52	0.00
5,100.00	12.48	343.455	4,669.25	1,585.47	-470.99	-432.42	1.52	-1.52	0.00
5,200.00	10.96	343.455	4,767.16	1,604.93	-476.78	-437.73	1.52	-1.52	0.00
5,300.00	9.45	343.455	4,865.58	1,621.91	-481.82	-442.36	1.52	-1.52	0.00
5,400.00	7.93	343.455	4,964.42	1,636.39	-486.12	-446.31	1.52	-1.52	0.00
5,500.00	6.42	343.455	5,063.64	1,648.36	-489.68	-449.58	1.52	-1.52	0.00
5,600.00	4.90	343.455	5,163.15	1,657.81	-492.48	-452.15	1.52	-1.52	0.00
5,700.00	3.39	343.455	5,262.89	1,664.73	-494.54	-454.04	1.52	-1.52	0.00
5,800.00	1.87	343.455	5,362.78	1,669.13	-495.85	-455.24	1.52	-1.52	0.00
5,900.00	0.36	343.455	5,462.76	1,670.99	-496.40	-455.75	1.52	-1.52	0.00
5,923.44	0.00	0.000	5,486.20	1,671.06	-496.42	-455.77	1.52	-1.52	0.00
Start 201.36 hold at 5923.44 MD									
6,000.00	0.00	0.000	5,562.76	1,671.06	-496.42	-455.77	0.00	0.00	0.00
6,100.00	0.00	0.000	5,662.76	1,671.06	-496.42	-455.77	0.00	0.00	0.00
6,124.80	0.00	0.000	5,687.56	1,671.06	-496.42	-455.77	0.00	0.00	0.00
Start DLS 12.00 TFO 88.62									
6,200.00	9.02	88.615	5,762.44	1,671.20	-490.51	-449.86	12.00	12.00	0.00
6,300.00	21.02	88.615	5,858.85	1,671.83	-464.65	-423.98	12.00	12.00	0.00
6,400.00	33.02	88.615	5,947.77	1,672.92	-419.31	-378.63	12.00	12.00	0.00
6,500.00	45.02	88.615	6,025.32	1,674.44	-356.48	-315.78	12.00	12.00	0.00
6,600.00	57.02	88.615	6,088.10	1,676.32	-278.90	-238.18	12.00	12.00	0.00
6,700.00	69.02	88.615	6,133.38	1,678.47	-189.97	-149.23	12.00	12.00	0.00
6,800.00	81.02	88.615	6,159.18	1,680.80	-93.57	-52.80	12.00	12.00	0.00
6,879.13	90.52	88.615	6,165.01	1,682.70	-14.77	26.03	12.00	12.00	0.00
Start 9926.01 hold at 6879.13 MD									
6,900.00	90.52	88.615	6,164.82	1,683.21	6.09	46.89	0.00	0.00	0.00
7,000.00	90.52	88.615	6,163.91	1,685.62	106.06	146.89	0.00	0.00	0.00
7,100.00	90.52	88.615	6,163.00	1,688.04	206.03	246.88	0.00	0.00	0.00
7,200.00	90.52	88.615	6,162.10	1,690.46	305.99	346.88	0.00	0.00	0.00
7,300.00	90.52	88.615	6,161.19	1,692.87	405.96	446.88	0.00	0.00	0.00
7,400.00	90.52	88.615	6,160.28	1,695.29	505.93	546.87	0.00	0.00	0.00
7,500.00	90.52	88.615	6,159.38	1,697.71	605.89	646.87	0.00	0.00	0.00
7,600.00	90.52	88.615	6,158.47	1,700.12	705.86	746.86	0.00	0.00	0.00
7,700.00	90.52	88.615	6,157.56	1,702.54	805.83	846.86	0.00	0.00	0.00
7,800.00	90.52	88.615	6,156.66	1,704.96	905.79	946.85	0.00	0.00	0.00
7,900.00	90.52	88.615	6,155.75	1,707.37	1,005.76	1,046.85	0.00	0.00	0.00
8,000.00	90.52	88.615	6,154.84	1,709.79	1,105.73	1,146.85	0.00	0.00	0.00
8,100.00	90.52	88.615	6,153.93	1,712.21	1,205.69	1,246.84	0.00	0.00	0.00
8,200.00	90.52	88.615	6,153.03	1,714.62	1,305.66	1,346.84	0.00	0.00	0.00
8,300.00	90.52	88.615	6,152.12	1,717.04	1,405.63	1,446.83	0.00	0.00	0.00
8,400.00	90.52	88.615	6,151.21	1,719.46	1,505.59	1,546.83	0.00	0.00	0.00
8,500.00	90.52	88.615	6,150.31	1,721.87	1,605.56	1,646.83	0.00	0.00	0.00
8,600.00	90.52	88.615	6,149.40	1,724.29	1,705.53	1,746.82	0.00	0.00	0.00
8,700.00	90.52	88.615	6,148.49	1,726.71	1,805.49	1,846.82	0.00	0.00	0.00
8,800.00	90.52	88.615	6,147.59	1,729.12	1,905.46	1,946.81	0.00	0.00	0.00
8,900.00	90.52	88.615	6,146.68	1,731.54	2,005.43	2,046.81	0.00	0.00	0.00
9,000.00	90.52	88.615	6,145.77	1,733.96	2,105.39	2,146.81	0.00	0.00	0.00
9,100.00	90.52	88.615	6,144.87	1,736.37	2,205.36	2,246.80	0.00	0.00	0.00
9,200.00	90.52	88.615	6,143.96	1,738.79	2,305.33	2,346.80	0.00	0.00	0.00
9,300.00	90.52	88.615	6,143.05	1,741.20	2,405.29	2,446.79	0.00	0.00	0.00
9,400.00	90.52	88.615	6,142.15	1,743.62	2,505.26	2,546.79	0.00	0.00	0.00

<b>Database:</b>	Casper District	<b>Local Co-ordinate Reference:</b>	Well Anschutz State 5-62-35-3225CN
<b>Company:</b>	Bill Barrett Corp.	<b>TVD Reference:</b>	GL 4580' & KB 20' @ 4600.00ft
<b>Project:</b>	Weld County, CO NAD 83	<b>MD Reference:</b>	GL 4580' & KB 20' @ 4600.00ft
<b>Site:</b>	Anschutz State 5-62-35_36 NWSW PAD	<b>North Reference:</b>	True
<b>Well:</b>	Anschutz State 5-62-35-3225CN	<b>Survey Calculation Method:</b>	Minimum Curvature
<b>Wellbore:</b>	OH		
<b>Design:</b>	Plan 2		

Planned Survey									
Measured Depth (ft)	Inclination (°)	Azimuth (°)	Vertical Depth (ft)	+N/-S (ft)	+E/-W (ft)	Vertical Section (ft)	Dogleg Rate (°/100ft)	Build Rate (°/100ft)	Turn Rate (°/100ft)
9,500.00	90.52	88.615	6,141.24	1,746.04	2,605.23	2,646.79	0.00	0.00	0.00
9,600.00	90.52	88.615	6,140.33	1,748.45	2,705.19	2,746.78	0.00	0.00	0.00
9,700.00	90.52	88.615	6,139.43	1,750.87	2,805.16	2,846.78	0.00	0.00	0.00
9,800.00	90.52	88.615	6,138.52	1,753.29	2,905.13	2,946.77	0.00	0.00	0.00
9,900.00	90.52	88.615	6,137.61	1,755.70	3,005.09	3,046.77	0.00	0.00	0.00
10,000.00	90.52	88.615	6,136.71	1,758.12	3,105.06	3,146.76	0.00	0.00	0.00
10,100.00	90.52	88.615	6,135.80	1,760.54	3,205.03	3,246.76	0.00	0.00	0.00
10,200.00	90.52	88.615	6,134.89	1,762.95	3,304.99	3,346.76	0.00	0.00	0.00
10,300.00	90.52	88.615	6,133.99	1,765.37	3,404.96	3,446.75	0.00	0.00	0.00
10,400.00	90.52	88.615	6,133.08	1,767.79	3,504.93	3,546.75	0.00	0.00	0.00
10,500.00	90.52	88.615	6,132.17	1,770.20	3,604.89	3,646.74	0.00	0.00	0.00
10,600.00	90.52	88.615	6,131.27	1,772.62	3,704.86	3,746.74	0.00	0.00	0.00
10,700.00	90.52	88.615	6,130.36	1,775.04	3,804.83	3,846.74	0.00	0.00	0.00
10,800.00	90.52	88.615	6,129.45	1,777.45	3,904.79	3,946.73	0.00	0.00	0.00
10,900.00	90.52	88.615	6,128.55	1,779.87	4,004.76	4,046.73	0.00	0.00	0.00
11,000.00	90.52	88.615	6,127.64	1,782.29	4,104.73	4,146.72	0.00	0.00	0.00
11,100.00	90.52	88.615	6,126.73	1,784.70	4,204.69	4,246.72	0.00	0.00	0.00
11,200.00	90.52	88.615	6,125.83	1,787.12	4,304.66	4,346.72	0.00	0.00	0.00
11,300.00	90.52	88.615	6,124.92	1,789.54	4,404.63	4,446.71	0.00	0.00	0.00
11,400.00	90.52	88.615	6,124.01	1,791.95	4,504.59	4,546.71	0.00	0.00	0.00
11,500.00	90.52	88.615	6,123.11	1,794.37	4,604.56	4,646.70	0.00	0.00	0.00
11,600.00	90.52	88.615	6,122.20	1,796.79	4,704.53	4,746.70	0.00	0.00	0.00
11,700.00	90.52	88.615	6,121.29	1,799.20	4,804.49	4,846.69	0.00	0.00	0.00
11,800.00	90.52	88.615	6,120.38	1,801.62	4,904.46	4,946.69	0.00	0.00	0.00
11,900.00	90.52	88.615	6,119.48	1,804.03	5,004.43	5,046.69	0.00	0.00	0.00
12,000.00	90.52	88.615	6,118.57	1,806.45	5,104.39	5,146.68	0.00	0.00	0.00
12,100.00	90.52	88.615	6,117.66	1,808.87	5,204.36	5,246.68	0.00	0.00	0.00
12,200.00	90.52	88.615	6,116.76	1,811.28	5,304.33	5,346.67	0.00	0.00	0.00
12,300.00	90.52	88.615	6,115.85	1,813.70	5,404.29	5,446.67	0.00	0.00	0.00
12,400.00	90.52	88.615	6,114.94	1,816.12	5,504.26	5,546.67	0.00	0.00	0.00
12,500.00	90.52	88.615	6,114.04	1,818.53	5,604.23	5,646.66	0.00	0.00	0.00
12,600.00	90.52	88.615	6,113.13	1,820.95	5,704.19	5,746.66	0.00	0.00	0.00
12,700.00	90.52	88.615	6,112.22	1,823.37	5,804.16	5,846.65	0.00	0.00	0.00
12,800.00	90.52	88.615	6,111.32	1,825.78	5,904.13	5,946.65	0.00	0.00	0.00
12,900.00	90.52	88.615	6,110.41	1,828.20	6,004.09	6,046.65	0.00	0.00	0.00
13,000.00	90.52	88.615	6,109.50	1,830.62	6,104.06	6,146.64	0.00	0.00	0.00
13,100.00	90.52	88.615	6,108.60	1,833.03	6,204.03	6,246.64	0.00	0.00	0.00
13,200.00	90.52	88.615	6,107.69	1,835.45	6,303.99	6,346.63	0.00	0.00	0.00
13,300.00	90.52	88.615	6,106.78	1,837.87	6,403.96	6,446.63	0.00	0.00	0.00
13,400.00	90.52	88.615	6,105.88	1,840.28	6,503.93	6,546.62	0.00	0.00	0.00
13,500.00	90.52	88.615	6,104.97	1,842.70	6,603.89	6,646.62	0.00	0.00	0.00
13,600.00	90.52	88.615	6,104.06	1,845.12	6,703.86	6,746.62	0.00	0.00	0.00
13,700.00	90.52	88.615	6,103.16	1,847.53	6,803.83	6,846.61	0.00	0.00	0.00
13,800.00	90.52	88.615	6,102.25	1,849.95	6,903.79	6,946.61	0.00	0.00	0.00
13,900.00	90.52	88.615	6,101.34	1,852.37	7,003.76	7,046.60	0.00	0.00	0.00
14,000.00	90.52	88.615	6,100.44	1,854.78	7,103.73	7,146.60	0.00	0.00	0.00
14,100.00	90.52	88.615	6,099.53	1,857.20	7,203.69	7,246.60	0.00	0.00	0.00
14,200.00	90.52	88.615	6,098.62	1,859.62	7,303.66	7,346.59	0.00	0.00	0.00
14,300.00	90.52	88.615	6,097.72	1,862.03	7,403.63	7,446.59	0.00	0.00	0.00
14,400.00	90.52	88.615	6,096.81	1,864.45	7,503.59	7,546.58	0.00	0.00	0.00
14,500.00	90.52	88.615	6,095.90	1,866.87	7,603.56	7,646.58	0.00	0.00	0.00
14,600.00	90.52	88.615	6,095.00	1,869.28	7,703.53	7,746.58	0.00	0.00	0.00
14,700.00	90.52	88.615	6,094.09	1,871.70	7,803.49	7,846.57	0.00	0.00	0.00
14,800.00	90.52	88.615	6,093.18	1,874.11	7,903.46	7,946.57	0.00	0.00	0.00

<b>Database:</b>	Casper District	<b>Local Co-ordinate Reference:</b>	Well Anschutz State 5-62-35-3225CN
<b>Company:</b>	Bill Barrett Corp.	<b>TVD Reference:</b>	GL 4580' & KB 20' @ 4600.00ft
<b>Project:</b>	Weld County, CO NAD 83	<b>MD Reference:</b>	GL 4580' & KB 20' @ 4600.00ft
<b>Site:</b>	Anschutz State 5-62-35_36 NWSW PAD	<b>North Reference:</b>	True
<b>Well:</b>	Anschutz State 5-62-35-3225CN	<b>Survey Calculation Method:</b>	Minimum Curvature
<b>Wellbore:</b>	OH		
<b>Design:</b>	Plan 2		

Planned Survey									
Measured Depth (ft)	Inclination (°)	Azimuth (°)	Vertical Depth (ft)	+N/-S (ft)	+E/-W (ft)	Vertical Section (ft)	Dogleg Rate (°/100ft)	Build Rate (°/100ft)	Turn Rate (°/100ft)
14,900.00	90.52	88.615	6,092.28	1,876.53	8,003.43	8,046.56	0.00	0.00	0.00
15,000.00	90.52	88.615	6,091.37	1,878.95	8,103.39	8,146.56	0.00	0.00	0.00
15,100.00	90.52	88.615	6,090.46	1,881.36	8,203.36	8,246.55	0.00	0.00	0.00
15,200.00	90.52	88.615	6,089.55	1,883.78	8,303.33	8,346.55	0.00	0.00	0.00
15,300.00	90.52	88.615	6,088.65	1,886.20	8,403.29	8,446.55	0.00	0.00	0.00
15,400.00	90.52	88.615	6,087.74	1,888.61	8,503.26	8,546.54	0.00	0.00	0.00
15,500.00	90.52	88.615	6,086.83	1,891.03	8,603.23	8,646.54	0.00	0.00	0.00
15,600.00	90.52	88.615	6,085.93	1,893.45	8,703.19	8,746.53	0.00	0.00	0.00
15,700.00	90.52	88.615	6,085.02	1,895.86	8,803.16	8,846.53	0.00	0.00	0.00
15,800.00	90.52	88.615	6,084.11	1,898.28	8,903.13	8,946.53	0.00	0.00	0.00
15,900.00	90.52	88.615	6,083.21	1,900.70	9,003.09	9,046.52	0.00	0.00	0.00
16,000.00	90.52	88.615	6,082.30	1,903.11	9,103.06	9,146.52	0.00	0.00	0.00
16,100.00	90.52	88.615	6,081.39	1,905.53	9,203.03	9,246.51	0.00	0.00	0.00
16,200.00	90.52	88.615	6,080.49	1,907.95	9,302.99	9,346.51	0.00	0.00	0.00
16,300.00	90.52	88.615	6,079.58	1,910.36	9,402.96	9,446.51	0.00	0.00	0.00
16,400.00	90.52	88.615	6,078.67	1,912.78	9,502.93	9,546.50	0.00	0.00	0.00
16,500.00	90.52	88.615	6,077.77	1,915.20	9,602.89	9,646.50	0.00	0.00	0.00
16,600.00	90.52	88.615	6,076.86	1,917.61	9,702.86	9,746.49	0.00	0.00	0.00
16,700.00	90.52	88.615	6,075.95	1,920.03	9,802.83	9,846.49	0.00	0.00	0.00
16,800.00	90.52	88.615	6,075.05	1,922.45	9,902.79	9,946.49	0.00	0.00	0.00
16,805.14	90.52	88.615	6,075.00	1,922.57	9,907.93	9,951.63	0.00	0.00	0.00
TD at 16805.14									

Design Targets									
Target Name	Dip Angle (°)	Dip Dir. (°)	TVD (ft)	+N/-S (ft)	+E/-W (ft)	Northing (usft)	Easting (usft)	Latitude	Longitude
5-62-35-3225CN PBHL - hit/miss target - Shape - Point	0.00	0.000	6,075.00	1,922.57	9,907.93	1,375,911.67	3,344,736.19	40° 21' 31.241 N	104° 15' 46.541 W
5-62-35-3225CN LP - plan misses target center by 0.76ft at 6908.66ft MD (6164.74 TVD, 1683.42 N, 14.75 E) - Point	0.00	0.000	6,165.00	1,682.70	14.77	1,375,537.78	3,334,847.21	40° 21' 28.890 N	104° 17' 54.341 W

Plan Annotations				
Measured Depth (ft)	Vertical Depth (ft)	Local Coordinates		Comment
		+N/-S (ft)	+E/-W (ft)	
1,000.00	1,000.00	0.00	0.00	Start Build 2.02
2,981.30	2,824.06	636.80	-189.17	Start 300.42 hold at 2981.30 MD
3,281.72	3,054.12	822.00	-244.19	Start Drop -1.52
5,923.44	5,486.20	1,671.06	-496.42	Start 201.36 hold at 5923.44 MD
6,124.80	5,687.56	1,671.06	-496.42	Start DLS 12.00 TFO 88.62
6,879.13	6,165.01	1,682.70	-14.77	Start 9926.01 hold at 6879.13 MD
16,805.14	6,075.00	1,922.57	9,907.93	TD at 16805.14