

Clear Creek Resource Partners

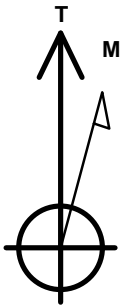
Well Name: **Salt Ranch Fee 203-1807H**

Surface Location: Salt Ranch Fee 1807H East Pad Sec.18-T11N-R64W
 North American Datum 1983 , US State Plane 1983, Colorado Northern Zone
 Ground Elevation: 5603.0

+N/-S +E/-W Northing Easting Longitude Slot
 0.0 0.0 1577348.05 3253010.43 40.914604 -104.584593
 Original Well Elev WELL @ 5626.0ft (Original Well Elev)

WELLBORE TARGET DETAILS

Name	TVD	+N/-S	+E/-W	Shape
SHL 367'FSL, 1098'FEL, SEC.18	1.0	0.0	0.0	Point
BHL 300'FNL, 1690'FEL, SEC.7	8006.0	9841.7	-663.9	Point
WP (203-1807H)	8009.0	4887.3	-360.1	Point
LPL 735'FSL, 1723'FEL, SEC.18	8012.0	352.0	-601.4	Point



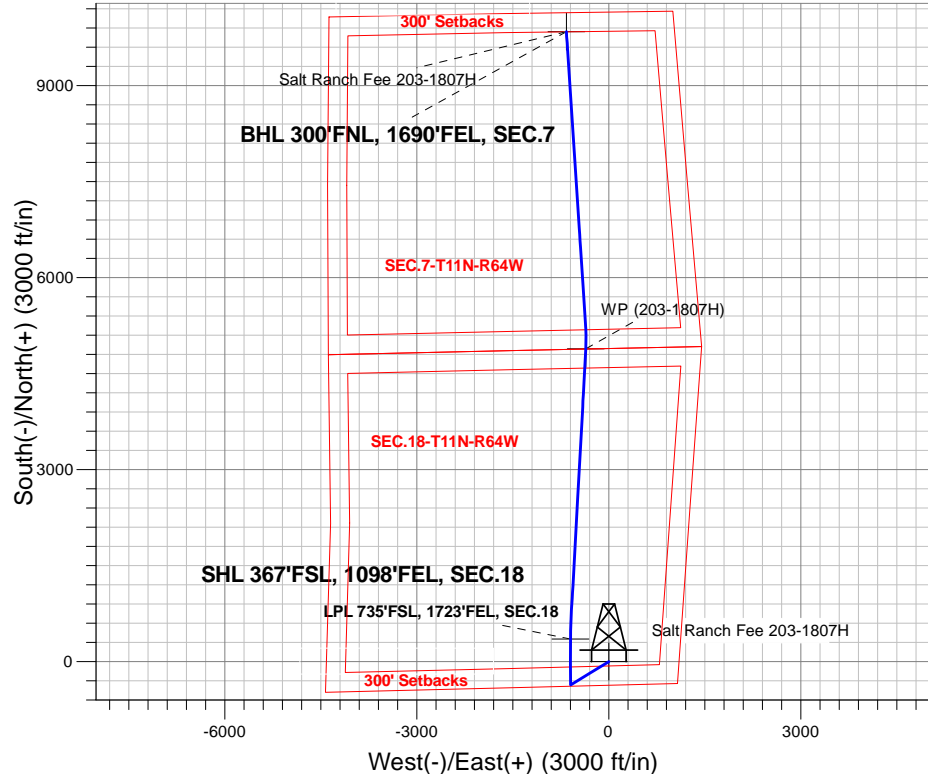
Azimuths to True North
 Magnetic North: 7.95°

Magnetic Field
 Strength: 52743.1snT
 Dip Angle: 67.27°
 Date: 10/12/2017
 Model: IGRF2010

Salt Ranch Fee 1807H East Pad Sec.18-T11N-R64W
 Salt Ranch Fee 203-1807H
 Plan #1 (9-26-17)
 11:31, October 12 2017

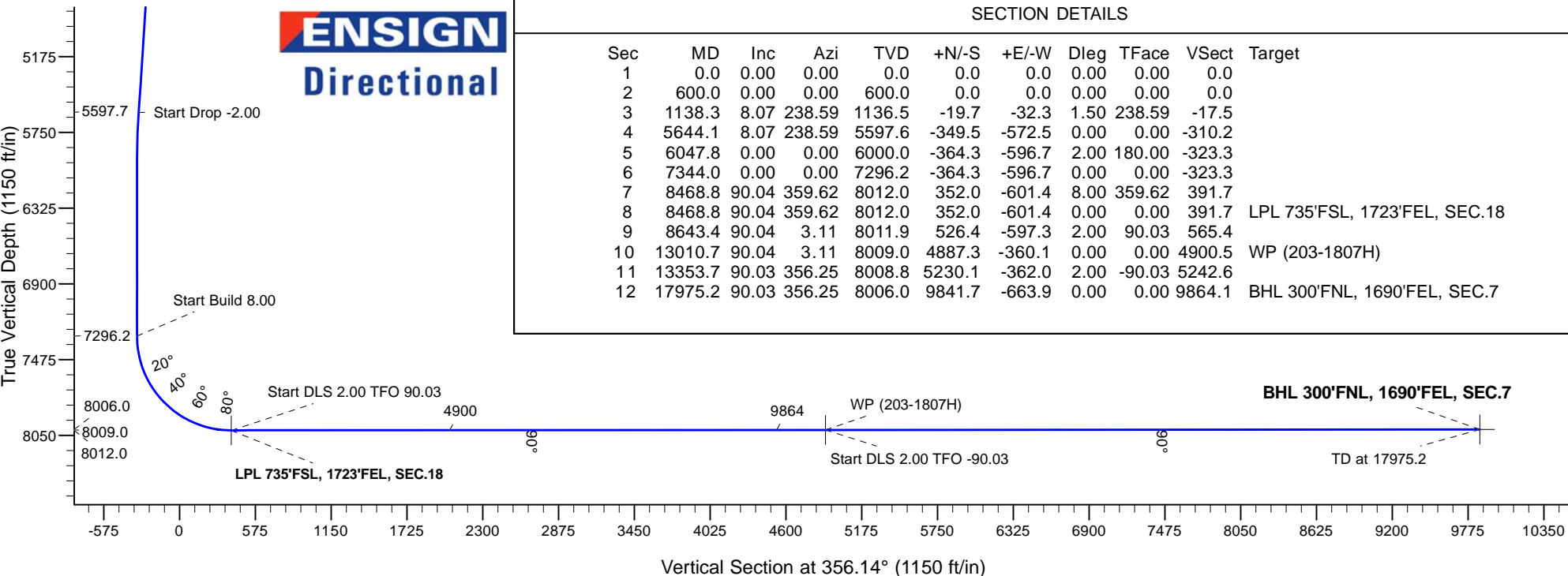
ANNOTATIONS

TVD	MD	Annotation
600.0	600.0	KOP - Start Build 1.50
5597.6	5644.1	Start Drop -2.00
7296.2	7344.0	Start Build 8.00
8012.0	8468.8	Start DLS 2.00 TFO 90.03
8009.0	13010.7	Start DLS 2.00 TFO -90.03
8006.0	17975.2	TD at 17975.2



SECTION DETAILS

Sec	MD	Inc	Azi	TVD	+N/-S	+E/-W	Dleg	TFace	VSect	Target
1	0.0	0.00	0.00	0.0	0.0	0.0	0.00	0.00	0.0	
2	600.0	0.00	0.00	600.0	0.0	0.0	0.00	0.00	0.0	
3	1138.3	8.07	238.59	1136.5	-19.7	-32.3	1.50	238.59	-17.5	
4	5644.1	8.07	238.59	5597.6	-349.5	-572.5	0.00	0.00	-310.2	
5	6047.8	0.00	0.00	6000.0	-364.3	-596.7	2.00	180.00	-323.3	
6	7344.0	0.00	0.00	7296.2	-364.3	-596.7	0.00	0.00	-323.3	
7	8468.8	90.04	359.62	8012.0	352.0	-601.4	8.00	359.62	391.7	
8	8468.8	90.04	359.62	8012.0	352.0	-601.4	0.00	0.00	391.7	LPL 735'FSL, 1723'FEL, SEC.18
9	8643.4	90.04	3.11	8011.9	526.4	-597.3	2.00	90.03	565.4	
10	13010.7	90.04	3.11	8009.0	4887.3	-360.1	0.00	0.00	4900.5	WP (203-1807H)
11	13353.7	90.03	356.25	8008.8	5230.1	-362.0	2.00	-90.03	5242.6	
12	17975.2	90.03	356.25	8006.0	9841.7	-663.9	0.00	0.00	9864.1	BHL 300'FNL, 1690'FEL, SEC.7





Directional

Clear Creek Resource Partners

SEC.18-T11N-R64W

Salt Ranch Fee 1807H East Pad Sec.18-T11N-R64W

Salt Ranch Fee 203-1807H

Wellbore #1

Plan: Plan #1 (9-26-17)

Standard Planning Report

12 October, 2017

Database:	US_EDM	Local Co-ordinate Reference:	Well Salt Ranch Fee 203-1807H
Company:	Clear Creek Resource Partners	TVD Reference:	WELL @ 5626.0ft (Original Well Elev)
Project:	SEC.18-T11N-R64W	MD Reference:	WELL @ 5626.0ft (Original Well Elev)
Site:	Salt Ranch Fee 1807H East Pad Sec.18-T11N-R64W	North Reference:	True
Well:	Salt Ranch Fee 203-1807H	Survey Calculation Method:	Minimum Curvature
Wellbore:	Wellbore #1		
Design:	Plan #1 (9-26-17)		

Project	SEC.18-T11N-R64W, Weld County, CO		
Map System:	US State Plane 1983	System Datum:	Mean Sea Level
Geo Datum:	North American Datum 1983		Using Well Reference Point
Map Zone:	Colorado Northern Zone		Using geodetic scale factor

Site	Salt Ranch Fee 1807H East Pad Sec.18-T11N-R64W				
Site Position:		Northing:	1,577,348.20 usft	Latitude:	40.914601
From:	Lat/Long	Easting:	3,253,130.67 usft	Longitude:	-104.584158
Position Uncertainty:	0.0 ft	Slot Radius:	13-3/16 "	Grid Convergence:	0.59 °

Well	Salt Ranch Fee 203-1807H					
Well Position	+N/-S	1.1 ft	Northing:	1,577,348.05 usft	Latitude:	40.914604
	+E/-W	-120.2 ft	Easting:	3,253,010.43 usft	Longitude:	-104.584593
Position Uncertainty		0.0 ft	Wellhead Elevation:	0.0 ft	Ground Level:	5,603.0 ft

Wellbore	Wellbore #1				
Magnetics	Model Name	Sample Date	Declination (°)	Dip Angle (°)	Field Strength (nT)
	IGRF2010	10/12/2017	7.95	67.27	52,743

Design	Plan #1 (9-26-17)			
Audit Notes:				
Version:	Phase:	PROTOTYPE	Tie On Depth:	0.0
Vertical Section:	Depth From (TVD) (ft)	+N/-S (ft)	+E/-W (ft)	Direction (°)
	0.0	0.0	0.0	356.14

Plan Sections										
Measured Depth (ft)	Inclination (°)	Azimuth (°)	Vertical Depth (ft)	+N/-S (ft)	+E/-W (ft)	Dogleg Rate (°/100usft)	Build Rate (°/100usft)	Turn Rate (°/100usft)	TFO (°)	Target
0.0	0.00	0.00	0.0	0.0	0.0	0.00	0.00	0.00	0.00	
600.0	0.00	0.00	600.0	0.0	0.0	0.00	0.00	0.00	0.00	
1,138.3	8.07	238.59	1,136.5	-19.7	-32.3	1.50	1.50	0.00	238.59	
5,644.1	8.07	238.59	5,597.6	-349.5	-572.5	0.00	0.00	0.00	0.00	
6,047.8	0.00	0.00	6,000.0	-364.3	-596.7	2.00	-2.00	0.00	180.00	
7,344.0	0.00	0.00	7,296.2	-364.3	-596.7	0.00	0.00	0.00	0.00	
8,468.8	90.04	359.62	8,012.0	352.0	-601.4	8.00	8.00	0.00	359.62	
8,468.8	90.04	359.62	8,012.0	352.0	-601.4	0.00	0.00	0.00	0.00	LPL 735'FSL, 1723'FE
8,643.4	90.04	3.11	8,011.9	526.4	-597.3	2.00	0.00	2.00	90.03	
13,010.7	90.04	3.11	8,009.0	4,887.3	-360.1	0.00	0.00	0.00	0.00	WP (203-1807H)
13,353.7	90.03	356.25	8,008.8	5,230.1	-362.0	2.00	0.00	-2.00	-90.03	
17,975.2	90.03	356.25	8,006.0	9,841.7	-663.9	0.00	0.00	0.00	0.00	BHL 300'FNL, 1690'F

Database:	US_EDM	Local Co-ordinate Reference:	Well Salt Ranch Fee 203-1807H
Company:	Clear Creek Resource Partners	TVD Reference:	WELL @ 5626.0ft (Original Well Elev)
Project:	SEC.18-T11N-R64W	MD Reference:	WELL @ 5626.0ft (Original Well Elev)
Site:	Salt Ranch Fee 1807H East Pad Sec.18-T11N-R64W	North Reference:	True
Well:	Salt Ranch Fee 203-1807H	Survey Calculation Method:	Minimum Curvature
Wellbore:	Wellbore #1		
Design:	Plan #1 (9-26-17)		

Planned Survey										
Measured Depth (ft)	Inclination (°)	Azimuth (°)	Vertical Depth (ft)	+N/-S (ft)	+E/-W (ft)	Vertical Section (ft)	Dogleg Rate (°/100usft)	Build Rate (°/100usft)	Turn Rate (°/100usft)	
0.0	0.00	0.00	0.0	0.0	0.0	0.0	0.00	0.00	0.00	
1.0	0.00	0.00	1.0	0.0	0.0	0.0	0.00	0.00	0.00	
SHL 367°FSL, 1098°FEL, SEC.18										
100.0	0.00	0.00	100.0	0.0	0.0	0.0	0.00	0.00	0.00	
200.0	0.00	0.00	200.0	0.0	0.0	0.0	0.00	0.00	0.00	
300.0	0.00	0.00	300.0	0.0	0.0	0.0	0.00	0.00	0.00	
400.0	0.00	0.00	400.0	0.0	0.0	0.0	0.00	0.00	0.00	
500.0	0.00	0.00	500.0	0.0	0.0	0.0	0.00	0.00	0.00	
600.0	0.00	0.00	600.0	0.0	0.0	0.0	0.00	0.00	0.00	
KOP - Start Build 1.50										
700.0	1.50	238.59	700.0	-0.7	-1.1	-0.6	1.50	1.50	0.00	
800.0	3.00	238.59	799.9	-2.7	-4.5	-2.4	1.50	1.50	0.00	
900.0	4.50	238.59	899.7	-6.1	-10.0	-5.4	1.50	1.50	0.00	
1,000.0	6.00	238.59	999.3	-10.9	-17.9	-9.7	1.50	1.50	0.00	
1,100.0	7.50	238.59	1,098.6	-17.0	-27.9	-15.1	1.50	1.50	0.00	
1,138.3	8.07	238.59	1,136.5	-19.7	-32.3	-17.5	1.50	1.50	0.00	
1,200.0	8.07	238.59	1,197.6	-24.2	-39.7	-21.5	0.00	0.00	0.00	
1,300.0	8.07	238.59	1,296.6	-31.6	-51.7	-28.0	0.00	0.00	0.00	
1,400.0	8.07	238.59	1,395.6	-38.9	-63.7	-34.5	0.00	0.00	0.00	
1,500.0	8.07	238.59	1,494.6	-46.2	-75.7	-41.0	0.00	0.00	0.00	
1,600.0	8.07	238.59	1,593.6	-53.5	-87.7	-47.5	0.00	0.00	0.00	
1,700.0	8.07	238.59	1,692.7	-60.8	-99.7	-54.0	0.00	0.00	0.00	
1,800.0	8.07	238.59	1,791.7	-68.2	-111.6	-60.5	0.00	0.00	0.00	
1,900.0	8.07	238.59	1,890.7	-75.5	-123.6	-67.0	0.00	0.00	0.00	
2,000.0	8.07	238.59	1,989.7	-82.8	-135.6	-73.5	0.00	0.00	0.00	
2,100.0	8.07	238.59	2,088.7	-90.1	-147.6	-80.0	0.00	0.00	0.00	
2,200.0	8.07	238.59	2,187.7	-97.4	-159.6	-86.5	0.00	0.00	0.00	
2,300.0	8.07	238.59	2,286.7	-104.8	-171.6	-93.0	0.00	0.00	0.00	
2,400.0	8.07	238.59	2,385.7	-112.1	-183.6	-99.5	0.00	0.00	0.00	
2,500.0	8.07	238.59	2,484.7	-119.4	-195.6	-106.0	0.00	0.00	0.00	
2,600.0	8.07	238.59	2,583.7	-126.7	-207.5	-112.5	0.00	0.00	0.00	
2,700.0	8.07	238.59	2,682.7	-134.0	-219.5	-119.0	0.00	0.00	0.00	
2,800.0	8.07	238.59	2,781.7	-141.3	-231.5	-125.4	0.00	0.00	0.00	
2,900.0	8.07	238.59	2,880.8	-148.7	-243.5	-131.9	0.00	0.00	0.00	
3,000.0	8.07	238.59	2,979.8	-156.0	-255.5	-138.4	0.00	0.00	0.00	
3,100.0	8.07	238.59	3,078.8	-163.3	-267.5	-144.9	0.00	0.00	0.00	
3,200.0	8.07	238.59	3,177.8	-170.6	-279.5	-151.4	0.00	0.00	0.00	
3,300.0	8.07	238.59	3,276.8	-177.9	-291.5	-157.9	0.00	0.00	0.00	
3,400.0	8.07	238.59	3,375.8	-185.3	-303.4	-164.4	0.00	0.00	0.00	
3,500.0	8.07	238.59	3,474.8	-192.6	-315.4	-170.9	0.00	0.00	0.00	
3,600.0	8.07	238.59	3,573.8	-199.9	-327.4	-177.4	0.00	0.00	0.00	
3,700.0	8.07	238.59	3,672.8	-207.2	-339.4	-183.9	0.00	0.00	0.00	
3,800.0	8.07	238.59	3,771.8	-214.5	-351.4	-190.4	0.00	0.00	0.00	
3,900.0	8.07	238.59	3,870.8	-221.9	-363.4	-196.9	0.00	0.00	0.00	
4,000.0	8.07	238.59	3,969.9	-229.2	-375.4	-203.4	0.00	0.00	0.00	
4,100.0	8.07	238.59	4,068.9	-236.5	-387.4	-209.9	0.00	0.00	0.00	
4,200.0	8.07	238.59	4,167.9	-243.8	-399.3	-216.4	0.00	0.00	0.00	
4,300.0	8.07	238.59	4,266.9	-251.1	-411.3	-222.9	0.00	0.00	0.00	
4,400.0	8.07	238.59	4,365.9	-258.5	-423.3	-229.4	0.00	0.00	0.00	
4,500.0	8.07	238.59	4,464.9	-265.8	-435.3	-235.9	0.00	0.00	0.00	
4,600.0	8.07	238.59	4,563.9	-273.1	-447.3	-242.4	0.00	0.00	0.00	
4,700.0	8.07	238.59	4,662.9	-280.4	-459.3	-248.9	0.00	0.00	0.00	
4,800.0	8.07	238.59	4,761.9	-287.7	-471.3	-255.4	0.00	0.00	0.00	

Database:	US_EDM	Local Co-ordinate Reference:	Well Salt Ranch Fee 203-1807H
Company:	Clear Creek Resource Partners	TVD Reference:	WELL @ 5626.0ft (Original Well Elev)
Project:	SEC.18-T11N-R64W	MD Reference:	WELL @ 5626.0ft (Original Well Elev)
Site:	Salt Ranch Fee 1807H East Pad Sec.18-T11N-R64W	North Reference:	True
Well:	Salt Ranch Fee 203-1807H	Survey Calculation Method:	Minimum Curvature
Wellbore:	Wellbore #1		
Design:	Plan #1 (9-26-17)		

Planned Survey										
Measured Depth (ft)	Inclination (°)	Azimuth (°)	Vertical Depth (ft)	+N/-S (ft)	+E/-W (ft)	Vertical Section (ft)	Dogleg Rate (°/100usft)	Build Rate (°/100usft)	Turn Rate (°/100usft)	
4,900.0	8.07	238.59	4,860.9	-295.0	-483.3	-261.8	0.00	0.00	0.00	
5,000.0	8.07	238.59	4,959.9	-302.4	-495.3	-268.3	0.00	0.00	0.00	
5,100.0	8.07	238.59	5,058.9	-309.7	-507.2	-274.8	0.00	0.00	0.00	
5,200.0	8.07	238.59	5,158.0	-317.0	-519.2	-281.3	0.00	0.00	0.00	
5,300.0	8.07	238.59	5,257.0	-324.3	-531.2	-287.8	0.00	0.00	0.00	
5,400.0	8.07	238.59	5,356.0	-331.6	-543.2	-294.3	0.00	0.00	0.00	
5,500.0	8.07	238.59	5,455.0	-339.0	-555.2	-300.8	0.00	0.00	0.00	
5,600.0	8.07	238.59	5,554.0	-346.3	-567.2	-307.3	0.00	0.00	0.00	
5,644.1	8.07	238.59	5,597.7	-349.5	-572.5	-310.2	0.00	0.00	0.00	
Start Drop -2.00										
5,700.0	6.96	238.59	5,653.1	-353.3	-578.7	-313.6	2.00	-2.00	0.00	
5,800.0	4.96	238.59	5,752.5	-358.7	-587.6	-318.4	2.00	-2.00	0.00	
5,900.0	2.96	238.59	5,852.3	-362.3	-593.4	-321.6	2.00	-2.00	0.00	
6,000.0	0.96	238.59	5,952.2	-364.1	-596.4	-323.1	2.00	-2.00	0.00	
6,047.8	0.00	0.00	6,000.0	-364.3	-596.7	-323.3	2.00	-2.00	0.00	
6,100.0	0.00	0.00	6,052.2	-364.3	-596.7	-323.3	0.00	0.00	0.00	
6,200.0	0.00	0.00	6,152.2	-364.3	-596.7	-323.3	0.00	0.00	0.00	
6,300.0	0.00	0.00	6,252.2	-364.3	-596.7	-323.3	0.00	0.00	0.00	
6,400.0	0.00	0.00	6,352.2	-364.3	-596.7	-323.3	0.00	0.00	0.00	
6,500.0	0.00	0.00	6,452.2	-364.3	-596.7	-323.3	0.00	0.00	0.00	
6,600.0	0.00	0.00	6,552.2	-364.3	-596.7	-323.3	0.00	0.00	0.00	
6,700.0	0.00	0.00	6,652.2	-364.3	-596.7	-323.3	0.00	0.00	0.00	
6,800.0	0.00	0.00	6,752.2	-364.3	-596.7	-323.3	0.00	0.00	0.00	
6,900.0	0.00	0.00	6,852.2	-364.3	-596.7	-323.3	0.00	0.00	0.00	
7,000.0	0.00	0.00	6,952.2	-364.3	-596.7	-323.3	0.00	0.00	0.00	
7,100.0	0.00	0.00	7,052.2	-364.3	-596.7	-323.3	0.00	0.00	0.00	
7,200.0	0.00	0.00	7,152.2	-364.3	-596.7	-323.3	0.00	0.00	0.00	
7,300.0	0.00	0.00	7,252.2	-364.3	-596.7	-323.3	0.00	0.00	0.00	
7,344.0	0.00	0.00	7,296.2	-364.3	-596.7	-323.3	0.00	0.00	0.00	
Start Build 8.00										
7,400.0	4.48	359.62	7,352.2	-362.1	-596.7	-321.1	8.01	8.01	0.00	
7,500.0	12.49	359.62	7,451.0	-347.4	-596.8	-306.4	8.00	8.00	0.00	
7,600.0	20.49	359.62	7,546.8	-319.0	-597.0	-278.1	8.00	8.00	0.00	
7,700.0	28.50	359.62	7,637.7	-277.6	-597.3	-236.8	8.00	8.00	0.00	
7,800.0	36.50	359.62	7,722.0	-223.9	-597.6	-183.2	8.00	8.00	0.00	
7,900.0	44.51	359.62	7,798.0	-159.0	-598.1	-118.4	8.00	8.00	0.00	
8,000.0	52.51	359.62	7,864.2	-84.2	-598.5	-43.7	8.00	8.00	0.00	
8,100.0	60.52	359.62	7,919.3	-0.8	-599.1	39.5	8.00	8.00	0.00	
8,200.0	68.52	359.62	7,962.3	89.4	-599.7	129.5	8.00	8.00	0.00	
8,300.0	76.52	359.62	7,992.3	184.7	-600.3	224.7	8.00	8.00	0.00	
8,400.0	84.53	359.62	8,008.7	283.2	-601.0	323.0	8.00	8.00	0.00	
8,468.8	90.04	359.62	8,012.0	352.0	-601.4	391.7	8.00	8.00	0.00	
Start DLS 2.00 TFO 90.03 - LPL 735°FSL, 1723°FEL, SEC.18										
8,500.0	90.04	0.25	8,012.0	383.1	-601.5	422.7	2.00	0.01	2.00	
8,600.0	90.04	2.25	8,011.9	483.1	-599.3	522.3	2.00	0.00	2.00	
8,643.4	90.04	3.11	8,011.9	526.4	-597.3	565.4	2.00	0.00	2.00	
8,700.0	90.04	3.11	8,011.8	583.0	-594.2	621.6	0.00	0.00	0.00	
8,800.0	90.04	3.11	8,011.8	682.8	-588.7	720.9	0.00	0.00	0.00	
8,900.0	90.04	3.11	8,011.7	782.7	-583.3	820.2	0.00	0.00	0.00	
9,000.0	90.04	3.11	8,011.6	882.5	-577.9	919.4	0.00	0.00	0.00	
9,100.0	90.04	3.11	8,011.6	982.4	-572.5	1,018.7	0.00	0.00	0.00	
9,200.0	90.04	3.11	8,011.5	1,082.2	-567.0	1,117.9	0.00	0.00	0.00	
9,300.0	90.04	3.11	8,011.4	1,182.1	-561.6	1,217.2	0.00	0.00	0.00	

Database:	US_EDM	Local Co-ordinate Reference:	Well Salt Ranch Fee 203-1807H
Company:	Clear Creek Resource Partners	TVD Reference:	WELL @ 5626.0ft (Original Well Elev)
Project:	SEC.18-T11N-R64W	MD Reference:	WELL @ 5626.0ft (Original Well Elev)
Site:	Salt Ranch Fee 1807H East Pad Sec.18-T11N-R64W	North Reference:	True
Well:	Salt Ranch Fee 203-1807H	Survey Calculation Method:	Minimum Curvature
Wellbore:	Wellbore #1		
Design:	Plan #1 (9-26-17)		

Planned Survey										
Measured Depth (ft)	Inclination (°)	Azimuth (°)	Vertical Depth (ft)	+N/-S (ft)	+E/-W (ft)	Vertical Section (ft)	Dogleg Rate (°/100usft)	Build Rate (°/100usft)	Turn Rate (°/100usft)	
9,400.0	90.04	3.11	8,011.4	1,281.9	-556.2	1,316.5	0.00	0.00	0.00	
9,500.0	90.04	3.11	8,011.3	1,381.8	-550.7	1,415.7	0.00	0.00	0.00	
9,600.0	90.04	3.11	8,011.3	1,481.6	-545.3	1,515.0	0.00	0.00	0.00	
9,700.0	90.04	3.11	8,011.2	1,581.5	-539.9	1,614.2	0.00	0.00	0.00	
9,800.0	90.04	3.11	8,011.1	1,681.3	-534.4	1,713.5	0.00	0.00	0.00	
9,900.0	90.04	3.11	8,011.1	1,781.2	-529.0	1,812.8	0.00	0.00	0.00	
10,000.0	90.04	3.11	8,011.0	1,881.0	-523.6	1,912.0	0.00	0.00	0.00	
10,100.0	90.04	3.11	8,010.9	1,980.9	-518.1	2,011.3	0.00	0.00	0.00	
10,200.0	90.04	3.11	8,010.9	2,080.7	-512.7	2,110.5	0.00	0.00	0.00	
10,300.0	90.04	3.11	8,010.8	2,180.6	-507.3	2,209.8	0.00	0.00	0.00	
10,400.0	90.04	3.11	8,010.7	2,280.5	-501.9	2,309.1	0.00	0.00	0.00	
10,500.0	90.04	3.11	8,010.7	2,380.3	-496.4	2,408.3	0.00	0.00	0.00	
10,600.0	90.04	3.11	8,010.6	2,480.2	-491.0	2,507.6	0.00	0.00	0.00	
10,700.0	90.04	3.11	8,010.5	2,580.0	-485.6	2,606.8	0.00	0.00	0.00	
10,800.0	90.04	3.11	8,010.5	2,679.9	-480.1	2,706.1	0.00	0.00	0.00	
10,900.0	90.04	3.11	8,010.4	2,779.7	-474.7	2,805.4	0.00	0.00	0.00	
11,000.0	90.04	3.11	8,010.3	2,879.6	-469.3	2,904.6	0.00	0.00	0.00	
11,100.0	90.04	3.11	8,010.3	2,979.4	-463.8	3,003.9	0.00	0.00	0.00	
11,200.0	90.04	3.11	8,010.2	3,079.3	-458.4	3,103.1	0.00	0.00	0.00	
11,300.0	90.04	3.11	8,010.1	3,179.1	-453.0	3,202.4	0.00	0.00	0.00	
11,400.0	90.04	3.11	8,010.1	3,279.0	-447.5	3,301.7	0.00	0.00	0.00	
11,500.0	90.04	3.11	8,010.0	3,378.8	-442.1	3,400.9	0.00	0.00	0.00	
11,600.0	90.04	3.11	8,009.9	3,478.7	-436.7	3,500.2	0.00	0.00	0.00	
11,700.0	90.04	3.11	8,009.9	3,578.5	-431.2	3,599.4	0.00	0.00	0.00	
11,800.0	90.04	3.11	8,009.8	3,678.4	-425.8	3,698.7	0.00	0.00	0.00	
11,900.0	90.04	3.11	8,009.7	3,778.2	-420.4	3,798.0	0.00	0.00	0.00	
12,000.0	90.04	3.11	8,009.7	3,878.1	-415.0	3,897.2	0.00	0.00	0.00	
12,100.0	90.04	3.11	8,009.6	3,977.9	-409.5	3,996.5	0.00	0.00	0.00	
12,200.0	90.04	3.11	8,009.5	4,077.8	-404.1	4,095.7	0.00	0.00	0.00	
12,300.0	90.04	3.11	8,009.5	4,177.6	-398.7	4,195.0	0.00	0.00	0.00	
12,400.0	90.04	3.11	8,009.4	4,277.5	-393.2	4,294.3	0.00	0.00	0.00	
12,500.0	90.04	3.11	8,009.3	4,377.4	-387.8	4,393.5	0.00	0.00	0.00	
12,600.0	90.04	3.11	8,009.3	4,477.2	-382.4	4,492.8	0.00	0.00	0.00	
12,700.0	90.04	3.11	8,009.2	4,577.1	-376.9	4,592.1	0.00	0.00	0.00	
12,800.0	90.04	3.11	8,009.1	4,676.9	-371.5	4,691.3	0.00	0.00	0.00	
12,900.0	90.04	3.11	8,009.1	4,776.8	-366.1	4,790.6	0.00	0.00	0.00	
13,000.0	90.04	3.11	8,009.0	4,876.6	-360.6	4,889.8	0.00	0.00	0.00	
13,010.7	90.04	3.11	8,009.0	4,887.3	-360.1	4,900.5	0.00	0.00	0.00	
Start DLS 2.00 TFO -90.03 - WP (203-1807H)										
13,100.0	90.04	1.33	8,008.9	4,976.5	-356.6	4,989.2	2.00	0.00	-2.00	
13,200.0	90.04	359.33	8,008.9	5,076.5	-356.0	5,089.0	2.00	0.00	-2.00	
13,300.0	90.04	357.33	8,008.8	5,176.5	-359.0	5,188.9	2.00	0.00	-2.00	
13,353.7	90.03	356.25	8,008.8	5,230.1	-362.0	5,242.6	2.00	0.00	-2.00	
13,400.0	90.03	356.25	8,008.8	5,276.3	-365.0	5,288.9	0.00	0.00	0.00	
13,500.0	90.03	356.25	8,008.7	5,376.1	-371.5	5,388.9	0.00	0.00	0.00	
13,600.0	90.03	356.25	8,008.6	5,475.9	-378.0	5,488.9	0.00	0.00	0.00	
13,700.0	90.03	356.25	8,008.6	5,575.7	-384.6	5,588.9	0.00	0.00	0.00	
13,800.0	90.03	356.25	8,008.5	5,675.4	-391.1	5,688.9	0.00	0.00	0.00	
13,900.0	90.03	356.25	8,008.5	5,775.2	-397.6	5,788.9	0.00	0.00	0.00	
14,000.0	90.03	356.25	8,008.4	5,875.0	-404.2	5,888.9	0.00	0.00	0.00	
14,100.0	90.03	356.25	8,008.3	5,974.8	-410.7	5,988.9	0.00	0.00	0.00	
14,200.0	90.03	356.25	8,008.3	6,074.6	-417.2	6,088.9	0.00	0.00	0.00	
14,300.0	90.03	356.25	8,008.2	6,174.4	-423.8	6,188.9	0.00	0.00	0.00	

Database:	US_EDM	Local Co-ordinate Reference:	Well Salt Ranch Fee 203-1807H
Company:	Clear Creek Resource Partners	TVD Reference:	WELL @ 5626.0ft (Original Well Elev)
Project:	SEC.18-T11N-R64W	MD Reference:	WELL @ 5626.0ft (Original Well Elev)
Site:	Salt Ranch Fee 1807H East Pad Sec.18-T11N-R64W	North Reference:	True
Well:	Salt Ranch Fee 203-1807H	Survey Calculation Method:	Minimum Curvature
Wellbore:	Wellbore #1		
Design:	Plan #1 (9-26-17)		

Planned Survey

Measured Depth (ft)	Inclination (°)	Azimuth (°)	Vertical Depth (ft)	+N/-S (ft)	+E/-W (ft)	Vertical Section (ft)	Dogleg Rate (°/100usft)	Build Rate (°/100usft)	Turn Rate (°/100usft)
14,400.0	90.03	356.25	8,008.2	6,274.2	-430.3	6,288.9	0.00	0.00	0.00
14,500.0	90.03	356.25	8,008.1	6,373.9	-436.8	6,388.9	0.00	0.00	0.00
14,600.0	90.03	356.25	8,008.0	6,473.7	-443.4	6,488.9	0.00	0.00	0.00
14,700.0	90.03	356.25	8,008.0	6,573.5	-449.9	6,588.9	0.00	0.00	0.00
14,800.0	90.03	356.25	8,007.9	6,673.3	-456.4	6,688.9	0.00	0.00	0.00
14,900.0	90.03	356.25	8,007.9	6,773.1	-463.0	6,788.9	0.00	0.00	0.00
15,000.0	90.03	356.25	8,007.8	6,872.9	-469.5	6,888.9	0.00	0.00	0.00
15,100.0	90.03	356.25	8,007.7	6,972.7	-476.0	6,988.9	0.00	0.00	0.00
15,200.0	90.03	356.25	8,007.7	7,072.4	-482.6	7,088.9	0.00	0.00	0.00
15,300.0	90.03	356.25	8,007.6	7,172.2	-489.1	7,188.9	0.00	0.00	0.00
15,400.0	90.03	356.25	8,007.6	7,272.0	-495.6	7,288.9	0.00	0.00	0.00
15,500.0	90.03	356.25	8,007.5	7,371.8	-502.2	7,388.9	0.00	0.00	0.00
15,600.0	90.03	356.25	8,007.4	7,471.6	-508.7	7,488.9	0.00	0.00	0.00
15,700.0	90.03	356.25	8,007.4	7,571.4	-515.2	7,588.9	0.00	0.00	0.00
15,800.0	90.03	356.25	8,007.3	7,671.2	-521.8	7,688.9	0.00	0.00	0.00
15,900.0	90.03	356.25	8,007.2	7,770.9	-528.3	7,788.9	0.00	0.00	0.00
16,000.0	90.03	356.25	8,007.2	7,870.7	-534.8	7,888.9	0.00	0.00	0.00
16,100.0	90.03	356.25	8,007.1	7,970.5	-541.4	7,988.9	0.00	0.00	0.00
16,200.0	90.03	356.25	8,007.1	8,070.3	-547.9	8,088.9	0.00	0.00	0.00
16,300.0	90.03	356.25	8,007.0	8,170.1	-554.4	8,188.9	0.00	0.00	0.00
16,400.0	90.03	356.25	8,006.9	8,269.9	-561.0	8,288.9	0.00	0.00	0.00
16,500.0	90.03	356.25	8,006.9	8,369.7	-567.5	8,388.9	0.00	0.00	0.00
16,600.0	90.03	356.25	8,006.8	8,469.5	-574.0	8,488.9	0.00	0.00	0.00
16,700.0	90.03	356.25	8,006.8	8,569.2	-580.6	8,588.9	0.00	0.00	0.00
16,800.0	90.03	356.25	8,006.7	8,669.0	-587.1	8,688.9	0.00	0.00	0.00
16,900.0	90.03	356.25	8,006.6	8,768.8	-593.6	8,788.9	0.00	0.00	0.00
17,000.0	90.03	356.25	8,006.6	8,868.6	-600.2	8,888.9	0.00	0.00	0.00
17,100.0	90.03	356.25	8,006.5	8,968.4	-606.7	8,988.9	0.00	0.00	0.00
17,200.0	90.03	356.25	8,006.5	9,068.2	-613.2	9,088.9	0.00	0.00	0.00
17,300.0	90.03	356.25	8,006.4	9,168.0	-619.8	9,188.9	0.00	0.00	0.00
17,400.0	90.03	356.25	8,006.3	9,267.7	-626.3	9,288.9	0.00	0.00	0.00
17,500.0	90.03	356.25	8,006.3	9,367.5	-632.9	9,388.9	0.00	0.00	0.00
17,600.0	90.03	356.25	8,006.2	9,467.3	-639.4	9,488.9	0.00	0.00	0.00
17,700.0	90.03	356.25	8,006.2	9,567.1	-645.9	9,588.9	0.00	0.00	0.00
17,800.0	90.03	356.25	8,006.1	9,666.9	-652.5	9,688.9	0.00	0.00	0.00
17,900.0	90.03	356.25	8,006.0	9,766.7	-659.0	9,788.9	0.00	0.00	0.00
17,975.2	90.03	356.25	8,006.0	9,841.7	-663.9	9,864.1	0.00	0.00	0.00
TD at 17975.2 - BHL 300°FNL, 1690°FEL, SEC.7									

Database:	US_EDM	Local Co-ordinate Reference:	Well Salt Ranch Fee 203-1807H
Company:	Clear Creek Resource Partners	TVD Reference:	WELL @ 5626.0ft (Original Well Elev)
Project:	SEC.18-T11N-R64W	MD Reference:	WELL @ 5626.0ft (Original Well Elev)
Site:	Salt Ranch Fee 1807H East Pad Sec.18-T11N-R64W	North Reference:	True
Well:	Salt Ranch Fee 203-1807H	Survey Calculation Method:	Minimum Curvature
Wellbore:	Wellbore #1		
Design:	Plan #1 (9-26-17)		

Design Targets									
Target Name - hit/miss target - Shape	Dip Angle (°)	Dip Dir. (°)	TVD (ft)	+N/-S (ft)	+E/-W (ft)	Northing (usft)	Easting (usft)	Latitude	Longitude
SHL 367°FSL, 1098°FEL - plan hits target center - Point	0.00	0.00	1.0	0.0	0.0	1,577,348.06	3,253,010.43	40.914604	-104.584593
BHL 300°FNL, 1690°FEL - plan hits target center - Point	0.00	0.00	8,006.0	9,841.7	-663.9	1,587,182.63	3,252,244.95	40.941616	-104.586996
WP (203-1807H) - plan hits target center - Point	0.00	0.00	8,009.0	4,887.3	-360.1	1,582,231.52	3,252,599.92	40.928018	-104.585896
LPL 735°FSL, 1723°FEL, - plan hits target center - Point	0.00	0.00	8,012.0	352.0	-601.4	1,577,693.80	3,252,405.40	40.915570	-104.586769

Plan Annotations				
Measured Depth (ft)	Vertical Depth (ft)	Local Coordinates		Comment
		+N/-S (ft)	+E/-W (ft)	
600.0	600.0	0.0	0.0	KOP - Start Build 1.50
5,644.1	5,597.6	-19.7	-32.3	Start Drop -2.00
7,344.0	7,296.2	-349.5	-572.5	Start Build 8.00
8,468.8	8,012.0	-364.3	-596.7	Start DLS 2.00 TFO 90.03
13,010.7	8,009.0	-364.3	-596.7	Start DLS 2.00 TFO -90.03
17,975.2	8,006.0	352.0	-601.4	TD at 17975.2



Directional

Clear Creek Resource Partners

SEC.18-T11N-R64W

Salt Ranch Fee 1807H East Pad Sec.18-T11N-R64W

Salt Ranch Fee 203-1807H

Wellbore #1

Plan #1 (9-26-17)

Anticollision Report

12 October, 2017

Company:	Clear Creek Resource Partners	Local Co-ordinate Reference:	Well Salt Ranch Fee 203-1807H
Project:	SEC.18-T11N-R64W	TVD Reference:	WELL @ 5626.0ft (Original Well Elev)
Reference Site:	Salt Ranch Fee 1807H East Pad Sec.18-T11N-R64W	MD Reference:	WELL @ 5626.0ft (Original Well Elev)
Site Error:	0.0 ft	North Reference:	True
Reference Well:	Salt Ranch Fee 203-1807H	Survey Calculation Method:	Minimum Curvature
Well Error:	0.0 ft	Output errors are at	2.00 sigma
Reference Wellbore	Wellbore #1	Database:	US_EDM
Reference Design:	Plan #1 (9-26-17)	Offset TVD Reference:	Offset Datum

Reference	Plan #1 (9-26-17)		
Filter type:	NO GLOBAL FILTER: Using user defined selection & filtering criteria		
Interpolation Method:	Stations	Error Model:	ISCWSA
Depth Range:	Unlimited	Scan Method:	Closest Approach 3D
Results Limited by:	Maximum center-center distance of 500.0 ft	Error Surface:	Elliptical Conic
Warning Levels Evaluated at:	2.00 Sigma	Casing Method:	Not applied

Survey Tool Program	Date	10/12/2017		
From (ft)	To (ft)	Survey (Wellbore)	Tool Name	Description
0.0	17,975.2	Plan #1 (9-26-17) (Wellbore #1)	MWD	MWD - Standard

Site Name	Reference Measured Depth (ft)	Offset Measured Depth (ft)	Distance Between Centres (ft)	Distance Between Ellipses (ft)	Separation Factor	Warning
Offset Well - Wellbore - Design						
Salt Ranch Fee 1807H East Pad Sec.18-T11N-R64W						
Salt Ranch Fee 201-1807H - Wellbore #1 - Plan #1 (9-26)	200.0	200.0	120.2	119.6	178.311	CC, ES
Salt Ranch Fee 201-1807H - Wellbore #1 - Plan #1 (9-26)	2,200.0	2,142.5	488.6	478.3	47.253	SF
Salt Ranch Fee 202-1807H - Wellbore #1 - Plan #1 (9-26)	600.0	600.0	60.3	57.8	24.372	CC, ES
Salt Ranch Fee 202-1807H - Wellbore #1 - Plan #1 (9-26)	900.0	899.7	70.5	66.8	18.766	SF
Salt Ranch Fee 204-1807H - Wellbore #1 - Plan #1 (9-26)	200.0	200.0	60.0	59.3	88.953	CC, ES
Salt Ranch Fee 204-1807H - Wellbore #1 - Plan #1 (9-26)	4,100.0	4,051.2	497.0	475.2	22.742	SF
Salt Ranch Fee 501-1807H - Wellbore #1 - Plan #1 (9-26)	500.0	500.0	90.1	88.1	44.545	CC, ES
Salt Ranch Fee 501-1807H - Wellbore #1 - Plan #1 (9-26)	900.0	889.6	118.1	114.4	32.104	SF
Salt Ranch Fee 502-1807H - Wellbore #1 - Plan #1 (9-26)	600.0	600.0	30.1	27.7	12.186	CC, ES
Salt Ranch Fee 502-1807H - Wellbore #1 - Plan #1 (9-26)	17,975.2	18,166.2	398.1	54.6	1.159	Level 2, SF
Salt Ranch Fee 503-1807H - Wellbore #1 - Plan #1 (9-26)	400.0	400.0	29.9	28.3	18.974	CC, ES
Salt Ranch Fee 503-1807H - Wellbore #1 - Plan #1 (9-26)	1,138.3	1,129.2	64.4	59.6	13.445	SF
Salt Ranch Fee 1807H West Pad Sec.18-T11N-R64W						
Salt Ranch Fee 205-1807H - Wellbore #1 - Plan #1 (9-26)						Out of range
Salt Ranch Fee 206-1807H - Wellbore #1 - Plan #1 (9-26)						Out of range
Salt Ranch Fee 207-1807H - Wellbore #1 - Plan #1 (9-26)						Out of range
Salt Ranch Fee 208-1807H - Wellbore #1 - Plan #1 (9-26)						Out of range
Salt Ranch Fee 504-1807H - Wellbore #1 - Plan #1 (9-26)						Out of range
Salt Ranch Fee 505-1807H - Wellbore #1 - Plan #1 (9-26)						Out of range
Salt Ranch Fee 506-1807H - Wellbore #1 - Plan #1 (9-26)						Out of range

Offset Design	Salt Ranch Fee 1807H East Pad Sec.18-T11N-R64W - Salt Ranch Fee 201-1807H - Wellbore #1 - Plan											Offset Site Error:	0.0 ft
Survey Program:	0-MWD											Offset Well Error:	0.0 ft
Reference Measured Depth (ft)	Vertical Depth (ft)	Offset Measured Depth (ft)	Vertical Depth (ft)	Semi Major Axis		Highside Toolface (°)	Offset Wellbore Centre		Distance		Minimum Separation (ft)	Separation Factor	Warning
				Reference (ft)	Offset (ft)		+N/-S (ft)	+E/-W (ft)	Between Centres (ft)	Between Ellipses (ft)			
0.0	0.0	0.0	0.0	0.0	0.0	90.52	-1.1	120.2	120.2				
100.0	100.0	100.0	100.0	0.1	0.1	90.52	-1.1	120.2	120.2	120.0	0.22	534.932	
200.0	200.0	200.0	200.0	0.3	0.3	90.52	-1.1	120.2	120.2	119.6	0.67	178.311	CC, ES
300.0	300.0	297.2	297.2	0.6	0.5	90.77	-1.6	121.3	121.4	120.3	1.10	110.168	
400.0	400.0	394.3	394.2	0.8	0.7	91.51	-3.3	124.7	124.8	123.3	1.53	81.467	
500.0	500.0	491.2	490.9	1.0	1.0	92.65	-6.0	130.2	130.6	128.6	1.98	65.882	

CC - Min centre to center distance or convergent point, SF - min separation factor, ES - min ellipse separation

Company:	Clear Creek Resource Partners	Local Co-ordinate Reference:	Well Salt Ranch Fee 203-1807H
Project:	SEC.18-T11N-R64W	TVD Reference:	WELL @ 5626.0ft (Original Well Elev)
Reference Site:	Salt Ranch Fee 1807H East Pad Sec.18-T11N-R64W	MD Reference:	WELL @ 5626.0ft (Original Well Elev)
Site Error:	0.0 ft	North Reference:	True
Reference Well:	Salt Ranch Fee 203-1807H	Survey Calculation Method:	Minimum Curvature
Well Error:	0.0 ft	Output errors are at	2.00 sigma
Reference Wellbore	Wellbore #1	Database:	US_EDM
Reference Design:	Plan #1 (9-26-17)	Offset TVD Reference:	Offset Datum

Offset Design													Offset Site Error:	0.0 ft		
Survey Program: 0-MWD													Salt Ranch Fee 1807H East Pad Sec.18-T11N-R64W - Salt Ranch Fee 201-1807H - Wellbore #1 - Plan		Offset Well Error:	0.0 ft
Reference		Offset		Semi Major Axis			Distance						Warning			
Measured Depth (ft)	Vertical Depth (ft)	Measured Depth (ft)	Vertical Depth (ft)	Reference (ft)	Offset (ft)	Highside Toolface (°)	Offset Wellbore Centre +N/-S (ft)	Offset Wellbore Centre +E/-W (ft)	Between Centres (ft)	Between Ellipses (ft)	Minimum Separation (ft)	Separation Factor				
600.0	600.0	587.7	587.0	1.2	1.2	94.08	-9.8	137.8	138.8	136.3	2.46	56.517				
700.0	700.0	683.5	682.2	1.4	1.5	-143.10	-14.7	147.6	150.4	147.6	2.87	52.402				
800.0	799.9	780.8	778.7	1.6	1.8	-142.12	-20.5	159.3	166.1	162.8	3.31	50.135				
900.0	899.7	879.2	876.1	1.8	2.1	-141.75	-26.5	171.3	184.0	180.2	3.76	48.919				
1,000.0	999.3	977.2	973.2	2.1	2.4	-141.86	-32.4	183.2	203.9	199.7	4.22	48.299				
1,100.0	1,098.6	1,074.7	1,069.8	2.3	2.8	-142.32	-38.3	195.1	225.9	221.2	4.70	48.095				
1,138.3	1,136.5	1,111.9	1,106.7	2.4	2.9	-142.56	-40.6	199.7	234.8	229.9	4.88	48.105				
1,200.0	1,197.6	1,171.8	1,166.0	2.6	3.1	-143.08	-44.2	207.0	249.5	244.3	5.18	48.155				
1,300.0	1,296.6	1,268.9	1,262.2	2.9	3.4	-143.80	-50.1	218.8	273.3	267.6	5.68	48.136				
1,400.0	1,395.6	1,366.0	1,358.4	3.2	3.8	-144.41	-56.0	230.6	297.2	291.0	6.18	48.090				
1,500.0	1,494.6	1,463.0	1,454.5	3.6	4.1	-144.93	-61.8	242.5	321.0	314.4	6.69	48.002				
1,600.0	1,593.6	1,560.1	1,550.7	3.9	4.4	-145.37	-67.7	254.3	344.9	337.7	7.20	47.897				
1,700.0	1,692.7	1,657.2	1,646.9	4.2	4.8	-145.76	-73.6	266.1	368.9	361.1	7.72	47.786				
1,800.0	1,791.7	1,754.3	1,743.0	4.6	5.1	-146.10	-79.5	278.0	392.8	384.6	8.24	47.673				
1,900.0	1,890.7	1,851.3	1,839.2	4.9	5.4	-146.41	-85.4	289.8	416.7	408.0	8.76	47.562				
2,000.0	1,989.7	1,948.4	1,935.4	5.2	5.8	-146.67	-91.3	301.6	440.7	431.4	9.29	47.454				
2,100.0	2,088.7	2,045.5	2,031.5	5.6	6.1	-146.92	-97.1	313.5	464.7	454.8	9.81	47.351				
2,200.0	2,187.7	2,142.5	2,127.7	5.9	6.4	-147.13	-103.0	325.3	488.6	478.3	10.34	47.253 SF				

Company:	Clear Creek Resource Partners	Local Co-ordinate Reference:	Well Salt Ranch Fee 203-1807H
Project:	SEC.18-T11N-R64W	TVD Reference:	WELL @ 5626.0ft (Original Well Elev)
Reference Site:	Salt Ranch Fee 1807H East Pad Sec.18-T11N-R64W	MD Reference:	WELL @ 5626.0ft (Original Well Elev)
Site Error:	0.0 ft	North Reference:	True
Reference Well:	Salt Ranch Fee 203-1807H	Survey Calculation Method:	Minimum Curvature
Well Error:	0.0 ft	Output errors are at	2.00 sigma
Reference Wellbore	Wellbore #1	Database:	US_EDM
Reference Design:	Plan #1 (9-26-17)	Offset TVD Reference:	Offset Datum

Offset Design													Offset Site Error:	0.0 ft	
Survey Program: 0-MWD													Offset Well Error:		0.0 ft
Reference				Offset			Semi Major Axis			Distance			Warning		
Measured Depth (ft)	Vertical Depth (ft)	Measured Depth (ft)	Vertical Depth (ft)	Reference (ft)	Offset (ft)	Highside Toolface (°)	Offset Wellbore Centre +N/-S (ft)	+E/-W (ft)	Between Centres (ft)	Between Ellipses (ft)	Minimum Separation (ft)	Separation Factor			
0.0	0.0	0.0	0.0	0.0	0.0	90.69	-0.7	60.3	60.3						
100.0	100.0	100.0	100.0	0.1	0.1	90.69	-0.7	60.3	60.3	60.0	0.22	268.090			
200.0	200.0	200.0	200.0	0.3	0.3	90.69	-0.7	60.3	60.3	59.6	0.67	89.363			
300.0	300.0	300.0	300.0	0.6	0.6	90.69	-0.7	60.3	60.3	59.1	1.12	53.618			
400.0	400.0	400.0	400.0	0.8	0.8	90.69	-0.7	60.3	60.3	58.7	1.57	38.299			
500.0	500.0	500.0	500.0	1.0	1.0	90.69	-0.7	60.3	60.3	58.2	2.02	29.788			
600.0	600.0	600.0	600.0	1.2	1.2	90.69	-0.7	60.3	60.3	57.8	2.47	24.372	CC, ES		
700.0	700.0	700.0	700.0	1.4	1.5	-148.54	-0.7	60.3	61.4	58.5	2.90	21.137			
800.0	799.9	799.9	799.9	1.6	1.7	-150.33	-0.7	60.3	64.8	61.4	3.33	19.474			
900.0	899.7	899.7	899.7	1.8	1.9	-152.92	-0.7	60.3	70.5	66.8	3.76	18.766	SF		
1,000.0	999.3	999.3	999.3	2.1	2.1	-155.90	-0.7	60.3	78.8	74.6	4.20	18.766			
1,100.0	1,098.6	1,098.7	1,098.7	2.3	2.3	-158.09	-2.0	60.4	89.5	84.9	4.62	19.398			
1,138.3	1,136.5	1,136.8	1,136.8	2.4	2.4	-158.53	-3.2	60.5	94.3	89.5	4.77	19.766			
1,200.0	1,197.6	1,198.1	1,198.0	2.6	2.5	-158.80	-5.8	60.8	102.1	97.1	5.02	20.368			
1,300.0	1,296.6	1,297.6	1,297.3	2.9	2.7	-158.10	-12.3	61.4	114.7	109.3	5.43	21.120			
1,400.0	1,395.6	1,396.8	1,396.1	3.2	2.9	-156.52	-20.9	62.2	127.2	121.3	5.88	21.650			
1,500.0	1,494.6	1,496.0	1,494.9	3.6	3.1	-155.07	-29.9	63.1	139.8	133.4	6.34	22.040			
1,600.0	1,593.6	1,595.1	1,593.6	3.9	3.3	-153.86	-38.9	64.0	152.4	145.6	6.82	22.333			
1,700.0	1,692.7	1,694.3	1,692.4	4.2	3.6	-152.84	-47.9	64.9	165.1	157.7	7.32	22.553			
1,800.0	1,791.7	1,793.4	1,791.1	4.6	3.8	-151.97	-56.9	65.8	177.8	170.0	7.83	22.718			
1,900.0	1,890.7	1,892.6	1,889.8	4.9	4.1	-151.21	-65.9	66.7	190.5	182.2	8.34	22.841			
2,000.0	1,989.7	1,991.7	1,988.6	5.2	4.3	-150.54	-74.9	67.6	203.3	194.5	8.87	22.934			
2,100.0	2,088.7	2,090.9	2,087.3	5.6	4.6	-149.96	-83.9	68.4	216.1	206.7	9.40	23.003			
2,200.0	2,187.7	2,190.0	2,186.1	5.9	4.8	-149.44	-92.9	69.3	229.0	219.0	9.93	23.053			
2,300.0	2,286.7	2,289.2	2,284.8	6.3	5.1	-148.97	-102.0	70.2	241.8	231.3	10.47	23.090			
2,400.0	2,385.7	2,388.4	2,383.5	6.6	5.3	-148.56	-111.0	71.1	254.7	243.7	11.02	23.117			
2,500.0	2,484.7	2,487.5	2,482.3	7.0	5.6	-148.18	-120.0	72.0	267.5	256.0	11.56	23.135			
2,600.0	2,583.7	2,586.7	2,581.0	7.3	5.9	-147.84	-129.0	72.9	280.4	268.3	12.12	23.146			
2,700.0	2,682.7	2,685.8	2,679.8	7.7	6.1	-147.52	-138.0	73.7	293.3	280.7	12.67	23.153			
2,800.0	2,781.7	2,785.0	2,778.5	8.0	6.4	-147.24	-147.0	74.6	306.2	293.0	13.22	23.156			
2,900.0	2,880.8	2,884.1	2,877.2	8.4	6.7	-146.98	-156.0	75.5	319.1	305.3	13.78	23.156			
3,000.0	2,979.8	2,983.3	2,976.0	8.7	7.0	-146.73	-165.0	76.4	332.0	317.7	14.34	23.153			
3,100.0	3,078.8	3,082.4	3,074.7	9.1	7.2	-146.51	-174.0	77.3	345.0	330.1	14.90	23.149			
3,200.0	3,177.8	3,181.6	3,173.5	9.4	7.5	-146.30	-183.0	78.2	357.9	342.4	15.46	23.143			
3,300.0	3,276.8	3,280.7	3,272.2	9.8	7.8	-146.11	-192.0	79.1	370.8	354.8	16.03	23.136			
3,400.0	3,375.8	3,379.9	3,370.9	10.1	8.1	-145.93	-201.0	79.9	383.7	367.2	16.59	23.129			
3,500.0	3,474.8	3,479.0	3,469.7	10.5	8.3	-145.76	-210.0	80.8	396.7	379.5	17.16	23.120			
3,600.0	3,573.8	3,578.2	3,568.4	10.8	8.6	-145.60	-219.0	81.7	409.6	391.9	17.72	23.111			
3,700.0	3,672.8	3,677.3	3,667.1	11.2	8.9	-145.45	-228.0	82.6	422.6	404.3	18.29	23.102			
3,800.0	3,771.8	3,776.5	3,765.9	11.5	9.2	-145.31	-237.0	83.5	435.5	416.6	18.86	23.093			
3,900.0	3,870.8	3,875.7	3,864.6	11.9	9.5	-145.18	-246.0	84.4	448.4	429.0	19.43	23.083			
4,000.0	3,969.9	3,974.8	3,963.4	12.2	9.7	-145.05	-255.0	85.3	461.4	441.4	20.00	23.074			
4,100.0	4,068.9	4,074.0	4,062.1	12.6	10.0	-144.94	-264.0	86.1	474.3	453.8	20.57	23.064			
4,200.0	4,167.9	4,173.1	4,160.8	12.9	10.3	-144.83	-273.0	87.0	487.3	466.2	21.14	23.055			

Company:	Clear Creek Resource Partners	Local Co-ordinate Reference:	Well Salt Ranch Fee 203-1807H
Project:	SEC.18-T11N-R64W	TVD Reference:	WELL @ 5626.0ft (Original Well Elev)
Reference Site:	Salt Ranch Fee 1807H East Pad Sec.18-T11N-R64W	MD Reference:	WELL @ 5626.0ft (Original Well Elev)
Site Error:	0.0 ft	North Reference:	True
Reference Well:	Salt Ranch Fee 203-1807H	Survey Calculation Method:	Minimum Curvature
Well Error:	0.0 ft	Output errors are at	2.00 sigma
Reference Wellbore	Wellbore #1	Database:	US_EDM
Reference Design:	Plan #1 (9-26-17)	Offset TVD Reference:	Offset Datum

Offset Design													Offset Site Error:	0.0 ft		
Survey Program: 0-MWD													Salt Ranch Fee 1807H East Pad Sec.18-T11N-R64W - Salt Ranch Fee 204-1807H - Wellbore #1 - Plan		Offset Well Error:	0.0 ft
Reference				Offset		Semi Major Axis			Distance				Warning			
Measured Depth (ft)	Vertical Depth (ft)	Measured Depth (ft)	Vertical Depth (ft)	Reference (ft)	Offset (ft)	Highside Toolface (°)	Offset Wellbore Centre +N/-S (ft)	+E/-W (ft)	Between Centres (ft)	Between Ellipses (ft)	Minimum Separation (ft)	Separation Factor				
0.0	0.0	0.0	0.0	0.0	0.0	-89.30	0.7	-60.0	60.0							
100.0	100.0	100.0	100.0	0.1	0.1	-89.30	0.7	-60.0	60.0	59.8	0.22	266.860				
200.0	200.0	200.0	200.0	0.3	0.3	-89.30	0.7	-60.0	60.0	59.3	0.67	88.953 CC, ES				
300.0	300.0	298.5	298.5	0.6	0.5	-89.67	0.3	-61.2	61.2	60.1	1.11	55.306				
400.0	400.0	396.9	396.8	0.8	0.8	-90.69	-0.8	-64.8	64.9	63.4	1.54	42.093				
500.0	500.0	495.0	494.7	1.0	1.0	-92.16	-2.7	-70.8	71.1	69.1	1.99	35.707				
600.0	600.0	592.7	592.0	1.2	1.2	-93.82	-5.3	-79.2	79.8	77.3	2.45	32.520				
700.0	700.0	690.1	688.7	1.4	1.5	26.21	-8.6	-89.9	89.9	87.0	2.87	31.317				
800.0	799.9	787.2	784.9	1.6	1.8	25.45	-12.7	-103.0	100.1	96.8	3.30	30.364				
900.0	899.7	884.0	880.4	1.8	2.2	25.13	-17.5	-118.3	110.5	106.8	3.74	29.521				
1,000.0	999.3	980.6	975.2	2.1	2.6	25.15	-23.0	-135.8	121.0	116.8	4.21	28.760				
1,100.0	1,098.6	1,076.9	1,069.2	2.3	3.0	25.42	-29.2	-155.6	131.6	126.9	4.69	28.052				
1,138.3	1,136.5	1,113.7	1,105.0	2.4	3.2	25.57	-31.7	-163.8	135.7	130.8	4.88	27.793				
1,200.0	1,197.6	1,172.9	1,162.5	2.6	3.5	25.84	-36.1	-177.6	142.8	137.6	5.20	27.480				
1,300.0	1,296.6	1,272.2	1,258.5	2.9	4.0	26.16	-43.5	-201.4	155.0	149.3	5.72	27.078				
1,400.0	1,395.6	1,371.4	1,354.6	3.2	4.5	26.44	-51.0	-225.3	167.2	160.9	6.25	26.737				
1,500.0	1,494.6	1,470.7	1,450.6	3.6	5.0	26.68	-58.5	-249.1	179.4	172.6	6.80	26.385				
1,600.0	1,593.6	1,569.9	1,546.7	3.9	5.5	26.89	-65.9	-273.0	191.6	184.2	7.35	26.068				
1,700.0	1,692.7	1,669.2	1,642.7	4.2	6.1	27.07	-73.4	-296.8	203.8	195.9	7.91	25.777				
1,800.0	1,791.7	1,768.4	1,738.8	4.6	6.6	27.23	-80.8	-320.7	216.0	207.5	8.47	25.511				
1,900.0	1,890.7	1,867.7	1,834.8	4.9	7.1	27.38	-88.3	-344.5	228.2	219.2	9.03	25.266				
2,000.0	1,989.7	1,966.9	1,930.9	5.2	7.7	27.51	-95.8	-368.4	240.4	230.8	9.60	25.042				
2,100.0	2,088.7	2,066.2	2,026.9	5.6	8.2	27.63	-103.2	-392.2	252.6	242.5	10.17	24.836				
2,200.0	2,187.7	2,165.4	2,123.0	5.9	8.8	27.74	-110.7	-416.1	264.9	254.1	10.75	24.647				
2,300.0	2,286.7	2,264.7	2,219.0	6.3	9.3	27.84	-118.1	-439.9	277.1	265.8	11.32	24.473				
2,400.0	2,385.7	2,363.9	2,315.1	6.6	9.8	27.93	-125.6	-463.8	289.3	277.4	11.90	24.311				
2,500.0	2,484.7	2,463.2	2,411.1	7.0	10.4	28.01	-133.1	-487.6	301.5	289.0	12.48	24.162				
2,600.0	2,583.7	2,562.4	2,507.2	7.3	10.9	28.08	-140.5	-511.5	313.7	300.7	13.06	24.024				
2,700.0	2,682.7	2,661.7	2,603.2	7.7	11.5	28.15	-148.0	-535.3	325.9	312.3	13.64	23.896				
2,800.0	2,781.7	2,760.9	2,699.3	8.0	12.0	28.22	-155.4	-559.2	338.2	323.9	14.22	23.776				
2,900.0	2,880.8	2,860.2	2,795.4	8.4	12.6	28.28	-162.9	-583.0	350.4	335.6	14.81	23.664				
3,000.0	2,979.8	2,959.4	2,891.4	8.7	13.1	28.34	-170.4	-606.9	362.6	347.2	15.39	23.560				
3,100.0	3,078.8	3,058.7	2,987.5	9.1	13.6	28.39	-177.8	-630.7	374.8	358.8	15.98	23.462				
3,200.0	3,177.8	3,157.9	3,083.5	9.4	14.2	28.44	-185.3	-654.6	387.0	370.5	16.56	23.370				
3,300.0	3,276.8	3,257.2	3,179.6	9.8	14.7	28.49	-192.8	-678.4	399.3	382.1	17.15	23.283				
3,400.0	3,375.8	3,356.4	3,275.6	10.1	15.3	28.53	-200.2	-702.3	411.5	393.7	17.73	23.202				
3,500.0	3,474.8	3,455.7	3,371.7	10.5	15.8	28.57	-207.7	-726.1	423.7	405.4	18.32	23.125				
3,600.0	3,573.8	3,554.9	3,467.7	10.8	16.4	28.61	-215.1	-750.0	435.9	417.0	18.91	23.052				
3,700.0	3,672.8	3,654.2	3,563.8	11.2	16.9	28.65	-222.6	-773.8	448.1	428.6	19.50	22.984				
3,800.0	3,771.8	3,753.4	3,659.8	11.5	17.5	28.68	-230.1	-797.7	460.4	440.3	20.09	22.919				
3,900.0	3,870.8	3,852.7	3,755.9	11.9	18.0	28.71	-237.5	-821.5	472.6	451.9	20.68	22.857				
4,000.0	3,969.9	3,951.9	3,851.9	12.2	18.5	28.75	-245.0	-845.4	484.8	463.5	21.27	22.798				
4,100.0	4,068.9	4,051.2	3,948.0	12.6	19.1	28.78	-252.4	-869.2	497.0	475.2	21.85	22.742 SF				

Company:	Clear Creek Resource Partners	Local Co-ordinate Reference:	Well Salt Ranch Fee 203-1807H
Project:	SEC.18-T11N-R64W	TVD Reference:	WELL @ 5626.0ft (Original Well Elev)
Reference Site:	Salt Ranch Fee 1807H East Pad Sec.18-T11N-R64W	MD Reference:	WELL @ 5626.0ft (Original Well Elev)
Site Error:	0.0 ft	North Reference:	True
Reference Well:	Salt Ranch Fee 203-1807H	Survey Calculation Method:	Minimum Curvature
Well Error:	0.0 ft	Output errors are at	2.00 sigma
Reference Wellbore	Wellbore #1	Database:	US_EDM
Reference Design:	Plan #1 (9-26-17)	Offset TVD Reference:	Offset Datum

Offset Design													Offset Site Error:	0.0 ft		
Survey Program: 0-MWD													Salt Ranch Fee 1807H East Pad Sec.18-T11N-R64W - Salt Ranch Fee 501-1807H - Wellbore #1 - Plan		Offset Well Error:	0.0 ft
Reference		Offset		Semi Major Axis			Distance						Warning			
Measured Depth (ft)	Vertical Depth (ft)	Measured Depth (ft)	Vertical Depth (ft)	Reference (ft)	Offset (ft)	Highside Toolface (°)	Offset Wellbore Centre +N/-S (ft)	+E/-W (ft)	Between Centres (ft)	Between Ellipses (ft)	Minimum Separation (ft)	Separation Factor				
0.0	0.0	0.0	0.0	0.0	0.0	90.69	-1.1	90.1	90.1							
100.0	100.0	100.0	100.0	0.1	0.1	90.69	-1.1	90.1	90.1	89.9	0.22	400.905				
200.0	200.0	200.0	200.0	0.3	0.3	90.69	-1.1	90.1	90.1	89.4	0.67	133.635				
300.0	300.0	300.0	300.0	0.6	0.6	90.69	-1.1	90.1	90.1	89.0	1.12	80.181				
400.0	400.0	400.0	400.0	0.8	0.8	90.69	-1.1	90.1	90.1	88.5	1.57	57.272				
500.0	500.0	500.0	500.0	1.0	1.0	90.69	-1.1	90.1	90.1	88.1	2.02	44.545	CC, ES			
600.0	600.0	597.9	597.9	1.2	1.2	91.07	-1.7	91.2	91.2	88.8	2.45	37.259				
700.0	700.0	695.7	695.6	1.4	1.4	-146.85	-3.5	94.5	95.8	92.9	2.85	33.595				
800.0	799.9	793.0	792.7	1.6	1.6	-146.37	-6.5	99.9	104.7	101.5	3.25	32.179				
900.0	899.7	889.6	888.9	1.8	1.8	-146.07	-10.7	107.5	118.1	114.4	3.68	32.104	SF			
1,000.0	999.3	985.2	983.9	2.1	2.1	-145.92	-16.0	117.0	135.9	131.8	4.12	32.961				
1,100.0	1,098.6	1,081.8	1,079.7	2.3	2.4	-145.97	-22.2	128.3	157.4	152.9	4.59	34.335				
1,138.3	1,136.5	1,119.1	1,116.6	2.4	2.5	-146.10	-24.6	132.7	166.3	161.5	4.76	34.903				
1,200.0	1,197.6	1,179.0	1,176.0	2.6	2.7	-146.44	-28.5	139.8	180.9	175.8	5.05	35.793				
1,300.0	1,296.6	1,276.2	1,272.3	2.9	3.0	-146.89	-34.8	151.2	204.4	198.9	5.53	36.963				
1,400.0	1,395.6	1,373.4	1,368.6	3.2	3.3	-147.25	-41.1	162.7	228.0	222.0	6.02	37.880				
1,500.0	1,494.6	1,470.5	1,464.8	3.6	3.6	-147.54	-47.4	174.1	251.6	245.1	6.52	38.600				
1,600.0	1,593.6	1,567.7	1,561.1	3.9	3.9	-147.78	-53.7	185.6	275.2	268.2	7.02	39.193				
1,700.0	1,692.7	1,664.9	1,657.4	4.2	4.2	-147.98	-60.1	197.0	298.8	291.2	7.53	39.675				
1,800.0	1,791.7	1,762.1	1,753.7	4.6	4.5	-148.16	-66.4	208.5	322.4	314.3	8.04	40.075				
1,900.0	1,890.7	1,859.2	1,850.0	4.9	4.9	-148.31	-72.7	219.9	346.0	337.4	8.56	40.409				
2,000.0	1,989.7	1,956.4	1,946.3	5.2	5.2	-148.44	-79.0	231.4	369.6	360.5	9.08	40.693				
2,100.0	2,088.7	2,053.6	2,042.6	5.6	5.5	-148.55	-85.3	242.8	393.2	383.6	9.61	40.936				
2,200.0	2,187.7	2,150.7	2,138.9	5.9	5.8	-148.65	-91.6	254.3	416.8	406.7	10.13	41.145				
2,300.0	2,286.7	2,247.9	2,235.1	6.3	6.2	-148.74	-97.9	265.7	440.4	429.7	10.66	41.326				
2,400.0	2,385.7	2,345.1	2,331.4	6.6	6.5	-148.82	-104.2	277.2	464.0	452.8	11.18	41.485				
2,500.0	2,484.7	2,442.3	2,427.7	7.0	6.8	-148.90	-110.6	288.6	487.6	475.9	11.71	41.626				

Company:	Clear Creek Resource Partners	Local Co-ordinate Reference:	Well Salt Ranch Fee 203-1807H
Project:	SEC.18-T11N-R64W	TVD Reference:	WELL @ 5626.0ft (Original Well Elev)
Reference Site:	Salt Ranch Fee 1807H East Pad Sec.18-T11N-R64W	MD Reference:	WELL @ 5626.0ft (Original Well Elev)
Site Error:	0.0 ft	North Reference:	True
Reference Well:	Salt Ranch Fee 203-1807H	Survey Calculation Method:	Minimum Curvature
Well Error:	0.0 ft	Output errors are at	2.00 sigma
Reference Wellbore	Wellbore #1	Database:	US_EDM
Reference Design:	Plan #1 (9-26-17)	Offset TVD Reference:	Offset Datum

Offset Design													Offset Site Error:	0.0 ft		
Survey Program: O-MWD													Salt Ranch Fee 1807H East Pad Sec.18-T11N-R64W - Salt Ranch Fee 502-1807H - Wellbore #1 - Plan		Offset Well Error:	0.0 ft
Reference				Offset		Semi Major Axis			Distance				Warning			
Measured Depth (ft)	Vertical Depth (ft)	Measured Depth (ft)	Vertical Depth (ft)	Reference (ft)	Offset (ft)	Highside Toolface (°)	Offset Wellbore Centre +N/-S (ft)	+E/-W (ft)	Between Centres (ft)	Between Ellipses (ft)	Minimum Separation (ft)	Separation Factor				
0.0	0.0	0.0	0.0	0.0	0.0	90.69	-0.4	30.1	30.1							
100.0	100.0	100.0	100.0	0.1	0.1	90.69	-0.4	30.1	30.1	29.9	0.22	134.045				
200.0	200.0	200.0	200.0	0.3	0.3	90.69	-0.4	30.1	30.1	29.5	0.67	44.682				
300.0	300.0	300.0	300.0	0.6	0.6	90.69	-0.4	30.1	30.1	29.0	1.12	26.809				
400.0	400.0	400.0	400.0	0.8	0.8	90.69	-0.4	30.1	30.1	28.6	1.57	19.149				
500.0	500.0	500.0	500.0	1.0	1.0	90.69	-0.4	30.1	30.1	28.1	2.02	14.894				
600.0	600.0	600.0	600.0	1.2	1.2	90.69	-0.4	30.1	30.1	27.7	2.47	12.186	CC, ES			
700.0	700.0	700.0	700.0	1.4	1.5	-149.17	-0.4	30.1	31.2	28.3	2.90	10.761				
800.0	799.9	799.9	799.9	1.6	1.7	-152.47	-0.4	30.1	34.7	31.3	3.33	10.427				
900.0	899.7	900.4	900.4	1.8	1.9	-155.39	-1.4	29.3	39.7	35.9	3.73	10.630				
1,000.0	999.3	1,001.0	1,000.9	2.1	2.1	-156.57	-4.6	27.0	45.3	41.2	4.13	10.969				
1,100.0	1,098.6	1,101.8	1,101.4	2.3	2.3	-156.55	-9.9	23.0	51.5	46.9	4.55	11.322				
1,138.3	1,136.5	1,140.3	1,139.9	2.4	2.4	-156.31	-12.5	21.1	54.0	49.3	4.71	11.457				
1,200.0	1,197.6	1,202.0	1,201.3	2.6	2.5	-155.82	-17.0	17.7	58.0	53.0	4.98	11.648				
1,300.0	1,296.6	1,301.8	1,300.6	2.9	2.7	-155.15	-24.2	12.3	64.6	59.1	5.43	11.881				
1,400.0	1,395.6	1,401.5	1,400.0	3.2	3.0	-154.61	-31.4	6.9	71.1	65.2	5.90	12.047				
1,500.0	1,494.6	1,501.3	1,499.4	3.6	3.2	-154.16	-38.7	1.5	77.7	71.3	6.38	12.166				
1,600.0	1,593.6	1,601.1	1,598.8	3.9	3.5	-153.78	-45.9	-3.9	84.2	77.4	6.88	12.252				
1,700.0	1,692.7	1,700.9	1,698.1	4.2	3.7	-153.45	-53.1	-9.4	90.8	83.4	7.37	12.313				
1,800.0	1,791.7	1,800.7	1,797.5	4.6	4.0	-153.17	-60.4	-14.8	97.4	89.5	7.88	12.356				
1,900.0	1,890.7	1,900.4	1,896.9	4.9	4.2	-152.93	-67.6	-20.2	103.9	95.5	8.39	12.386				
2,000.0	1,989.7	2,000.2	1,996.2	5.2	4.5	-152.71	-74.9	-25.6	110.5	101.6	8.91	12.407				
2,100.0	2,088.7	2,100.0	2,095.6	5.6	4.8	-152.52	-82.1	-31.0	117.1	107.7	9.43	12.420				
2,200.0	2,187.7	2,199.8	2,195.0	5.9	5.1	-152.35	-89.3	-36.4	123.7	113.7	9.95	12.429				
2,300.0	2,286.7	2,299.6	2,294.4	6.3	5.3	-152.19	-96.6	-41.8	130.2	119.8	10.48	12.433				
2,400.0	2,385.7	2,399.4	2,393.7	6.6	5.6	-152.05	-103.8	-47.2	136.8	125.8	11.00	12.434				
2,500.0	2,484.7	2,499.1	2,493.1	7.0	5.9	-151.92	-111.0	-52.6	143.4	131.9	11.53	12.433				
2,600.0	2,583.7	2,598.9	2,592.5	7.3	6.2	-151.81	-118.3	-58.1	150.0	137.9	12.07	12.430				
2,700.0	2,682.7	2,698.7	2,691.9	7.7	6.4	-151.70	-125.5	-63.5	156.6	144.0	12.60	12.426				
2,800.0	2,781.7	2,798.5	2,791.2	8.0	6.7	-151.61	-132.8	-68.9	163.1	150.0	13.13	12.421				
2,900.0	2,880.8	2,898.3	2,890.6	8.4	7.0	-151.52	-140.0	-74.3	169.7	156.0	13.67	12.415				
3,000.0	2,979.8	2,998.1	2,990.0	8.7	7.3	-151.43	-147.2	-79.7	176.3	162.1	14.21	12.409				
3,100.0	3,078.8	3,097.8	3,089.4	9.1	7.6	-151.36	-154.5	-85.1	182.9	168.1	14.75	12.402				
3,200.0	3,177.8	3,197.6	3,188.7	9.4	7.8	-151.28	-161.7	-90.5	189.5	174.2	15.28	12.395				
3,300.0	3,276.8	3,297.4	3,288.1	9.8	8.1	-151.22	-168.9	-95.9	196.0	180.2	15.82	12.388				
3,400.0	3,375.8	3,397.2	3,387.5	10.1	8.4	-151.15	-176.2	-101.4	202.6	186.3	16.37	12.381				
3,500.0	3,474.8	3,497.0	3,486.8	10.5	8.7	-151.10	-183.4	-106.8	209.2	192.3	16.91	12.374				
3,600.0	3,573.8	3,596.8	3,586.2	10.8	9.0	-151.04	-190.6	-112.2	215.8	198.3	17.45	12.367				
3,700.0	3,672.8	3,696.5	3,685.6	11.2	9.2	-150.99	-197.9	-117.6	222.4	204.4	17.99	12.361				
3,800.0	3,771.8	3,796.3	3,785.0	11.5	9.5	-150.94	-205.1	-123.0	229.0	210.4	18.53	12.354				
3,900.0	3,870.8	3,896.1	3,884.3	11.9	9.8	-150.89	-212.4	-128.4	235.5	216.5	19.08	12.347				
4,000.0	3,969.9	3,995.9	3,983.7	12.2	10.1	-150.85	-219.6	-133.8	242.1	222.5	19.62	12.340				
4,100.0	4,068.9	4,095.7	4,083.1	12.6	10.4	-150.81	-226.8	-139.2	248.7	228.5	20.16	12.334				
4,200.0	4,167.9	4,195.5	4,182.5	12.9	10.7	-150.77	-234.1	-144.7	255.3	234.6	20.71	12.328				
4,300.0	4,266.9	4,295.2	4,281.8	13.3	10.9	-150.73	-241.3	-150.1	261.9	240.6	21.25	12.321				
4,400.0	4,365.9	4,395.0	4,381.2	13.6	11.2	-150.70	-248.5	-155.5	268.5	246.7	21.80	12.315				
4,500.0	4,464.9	4,494.8	4,480.6	14.0	11.5	-150.66	-255.8	-160.9	275.0	252.7	22.34	12.309				
4,600.0	4,563.9	4,594.6	4,579.9	14.4	11.8	-150.63	-263.0	-166.3	281.6	258.7	22.89	12.304				
4,700.0	4,662.9	4,694.4	4,679.3	14.7	12.1	-150.60	-270.3	-171.7	288.2	264.8	23.44	12.298				
4,800.0	4,761.9	4,794.2	4,778.7	15.1	12.4	-150.57	-277.5	-177.1	294.8	270.8	23.98	12.293				
4,900.0	4,860.9	4,893.9	4,878.1	15.4	12.7	-150.54	-284.7	-182.5	301.4	276.9	24.53	12.287				

CC - Min centre to center distance or convergent point, SF - min separation factor, ES - min ellipse separation

Company:	Clear Creek Resource Partners	Local Co-ordinate Reference:	Well Salt Ranch Fee 203-1807H
Project:	SEC.18-T11N-R64W	TVD Reference:	WELL @ 5626.0ft (Original Well Elev)
Reference Site:	Salt Ranch Fee 1807H East Pad Sec.18-T11N-R64W	MD Reference:	WELL @ 5626.0ft (Original Well Elev)
Site Error:	0.0 ft	North Reference:	True
Reference Well:	Salt Ranch Fee 203-1807H	Survey Calculation Method:	Minimum Curvature
Well Error:	0.0 ft	Output errors are at	2.00 sigma
Reference Wellbore	Wellbore #1	Database:	US_EDM
Reference Design:	Plan #1 (9-26-17)	Offset TVD Reference:	Offset Datum

Offset Design													Offset Site Error:	0.0 ft		
Survey Program: O-MWD													Salt Ranch Fee 1807H East Pad Sec.18-T11N-R64W - Salt Ranch Fee 502-1807H - Wellbore #1 - Plan		Offset Well Error:	0.0 ft
Reference		Offset		Semi Major Axis			Distance						Warning			
Measured Depth (ft)	Vertical Depth (ft)	Measured Depth (ft)	Vertical Depth (ft)	Reference (ft)	Offset (ft)	Highside Toolface (°)	Offset Wellbore Centre +N/-S (ft)	+E/-W (ft)	Between Centres (ft)	Between Ellipses (ft)	Minimum Separation (ft)	Separation Factor				
5,000.0	4,959.9	4,993.7	4,977.4	15.8	12.9	-150.52	-292.0	-188.0	308.0	282.9	25.07	12.282				
5,100.0	5,058.9	5,093.5	5,076.8	16.1	13.2	-150.49	-299.2	-193.4	314.6	288.9	25.62	12.277				
5,200.0	5,158.0	5,193.3	5,176.2	16.5	13.5	-150.46	-306.4	-198.8	321.1	295.0	26.17	12.272				
5,300.0	5,257.0	5,293.1	5,275.6	16.8	13.8	-150.44	-313.7	-204.2	327.7	301.0	26.72	12.267				
5,400.0	5,356.0	5,392.9	5,374.9	17.2	14.1	-150.42	-320.9	-209.6	334.3	307.0	27.26	12.263				
5,500.0	5,455.0	5,492.6	5,474.3	17.5	14.4	-150.40	-328.1	-215.0	340.9	313.1	27.81	12.258				
5,600.0	5,554.0	5,592.4	5,573.7	17.9	14.6	-150.38	-335.4	-220.4	347.5	319.1	28.36	12.254				
5,644.1	5,597.6	5,636.4	5,617.5	18.1	14.8	-150.37	-338.6	-222.8	350.4	321.8	28.60	12.252				
5,700.0	5,653.1	5,692.2	5,673.1	18.2	14.9	-150.34	-342.6	-225.8	353.6	324.7	28.90	12.235				
5,800.0	5,752.5	5,789.8	5,770.3	18.4	15.2	-150.09	-349.6	-231.0	357.1	327.7	29.38	12.153				
5,900.0	5,852.3	5,882.6	5,862.9	18.6	15.4	-149.88	-354.3	-234.6	359.1	329.3	29.75	12.071				
6,000.0	5,952.2	5,975.4	5,955.7	18.8	15.5	-149.77	-356.7	-236.4	360.1	330.0	30.04	11.985				
6,047.8	6,000.0	6,019.8	6,000.0	18.8	15.6	88.83	-357.0	-236.6	360.2	330.0	30.22	11.919				
6,065.2	6,017.4	6,037.2	6,017.4	18.9	15.6	88.83	-357.0	-236.6	360.2	329.9	30.28	11.895				
6,100.0	6,052.2	6,072.0	6,052.2	18.9	15.7	88.83	-357.0	-236.6	360.2	329.8	30.40	11.848				
6,200.0	6,152.2	6,172.0	6,152.2	19.0	15.9	88.83	-357.0	-236.6	360.2	329.5	30.73	11.723				
6,300.0	6,252.2	6,272.0	6,252.2	19.2	16.0	88.83	-357.0	-236.6	360.2	329.2	31.05	11.601				
6,400.0	6,352.2	6,372.0	6,352.2	19.3	16.2	88.83	-357.0	-236.6	360.2	328.8	31.38	11.480				
6,500.0	6,452.2	6,472.0	6,452.2	19.5	16.3	88.83	-357.0	-236.6	360.2	328.5	31.71	11.361				
6,600.0	6,552.2	6,572.0	6,552.2	19.6	16.5	88.83	-357.0	-236.6	360.2	328.2	32.04	11.243				
6,700.0	6,652.2	6,672.0	6,652.2	19.7	16.6	88.83	-357.0	-236.6	360.2	327.8	32.37	11.126				
6,800.0	6,752.2	6,772.0	6,752.2	19.9	16.8	88.83	-357.0	-236.6	360.2	327.5	32.71	11.011				
6,900.0	6,852.2	6,872.0	6,852.2	20.0	17.0	88.83	-357.0	-236.6	360.2	327.1	33.05	10.898				
7,000.0	6,952.2	6,972.0	6,952.2	20.2	17.1	88.83	-357.0	-236.6	360.2	326.8	33.40	10.786				
7,100.0	7,052.2	7,072.0	7,052.2	20.3	17.3	88.83	-357.0	-236.6	360.2	326.5	33.74	10.675				
7,200.0	7,152.2	7,172.0	7,152.2	20.5	17.5	88.83	-357.0	-236.6	360.2	326.1	34.09	10.566				
7,300.0	7,252.2	7,272.0	7,252.2	20.6	17.6	88.83	-357.0	-236.6	360.2	325.8	34.44	10.458				
7,344.0	7,296.2	7,316.0	7,296.2	20.7	17.7	88.83	-357.0	-236.6	360.2	325.6	34.60	10.412				
7,350.0	7,302.2	7,322.0	7,302.2	20.7	17.7	89.21	-357.0	-236.6	360.2	325.6	34.58	10.417				
7,400.0	7,352.2	7,372.0	7,352.2	20.8	17.8	89.56	-357.0	-236.6	360.2	325.4	34.78	10.357				
7,428.3	7,380.4	7,400.2	7,380.4	20.8	17.9	90.00	-357.0	-236.6	360.2	325.3	34.91	10.318				
7,450.0	7,401.8	7,421.6	7,401.8	20.8	17.9	90.45	-357.0	-236.6	360.2	325.2	35.02	10.286				
7,500.0	7,451.0	7,470.8	7,451.0	20.9	18.0	91.86	-357.0	-236.6	360.4	325.1	35.29	10.211				
7,550.0	7,499.4	7,519.2	7,499.4	20.9	18.1	93.73	-357.0	-236.6	361.0	325.4	35.59	10.144				
7,600.0	7,546.8	7,568.7	7,548.9	20.9	18.2	95.96	-356.0	-236.6	362.3	326.4	35.88	10.098				
7,650.0	7,593.0	7,619.7	7,599.7	20.9	18.2	98.21	-351.6	-236.6	364.3	328.1	36.11	10.087				
7,700.0	7,637.7	7,672.0	7,651.3	20.9	18.3	100.43	-343.3	-236.7	366.8	330.5	36.26	10.115				
7,750.0	7,680.8	7,725.6	7,703.4	20.8	18.3	102.60	-330.9	-236.8	369.8	333.5	36.32	10.183				
7,800.0	7,722.0	7,780.5	7,755.7	20.8	18.3	104.71	-314.2	-236.9	373.4	337.1	36.28	10.291				
7,850.0	7,761.1	7,836.8	7,807.8	20.8	18.3	106.74	-292.9	-237.1	377.3	341.2	36.15	10.437				
7,900.0	7,798.0	7,894.6	7,859.4	20.7	18.3	108.69	-266.9	-237.3	381.6	345.6	35.93	10.619				
7,950.0	7,832.4	7,953.9	7,910.0	20.7	18.3	110.53	-236.1	-237.5	386.1	350.4	35.64	10.831				
8,000.0	7,864.2	8,014.7	7,959.1	20.6	18.3	112.26	-200.1	-237.8	390.7	355.4	35.30	11.066				
8,050.0	7,893.2	8,077.1	8,006.1	20.6	18.2	113.87	-159.1	-238.1	395.3	360.3	34.94	11.312				
8,100.0	7,919.3	8,141.1	8,050.3	20.5	18.2	115.34	-112.9	-238.5	399.8	365.2	34.60	11.555				
8,150.0	7,942.4	8,206.5	8,091.2	20.5	18.2	116.66	-61.8	-238.8	404.0	369.7	34.30	11.778				
8,200.0	7,962.3	8,273.3	8,127.9	20.5	18.2	117.83	-6.0	-239.3	407.9	373.8	34.11	11.960				
8,250.0	7,979.0	8,341.5	8,159.8	20.5	18.2	118.82	54.1	-239.7	411.4	377.4	34.05	12.081				
8,300.0	7,992.3	8,410.7	8,186.2	20.5	18.4	119.64	118.1	-240.2	414.4	380.2	34.18	12.122				
8,350.0	8,002.2	8,480.9	8,206.6	20.6	18.8	120.27	185.3	-240.8	416.7	382.1	34.52	12.069				
8,400.0	8,008.7	8,551.9	8,220.4	20.7	19.3	120.72	254.8	-241.3	418.3	383.2	35.08	11.922				

CC - Min centre to center distance or convergent point, SF - min separation factor, ES - min ellipse separation

Company:	Clear Creek Resource Partners	Local Co-ordinate Reference:	Well Salt Ranch Fee 203-1807H
Project:	SEC.18-T11N-R64W	TVD Reference:	WELL @ 5626.0ft (Original Well Elev)
Reference Site:	Salt Ranch Fee 1807H East Pad Sec.18-T11N-R64W	MD Reference:	WELL @ 5626.0ft (Original Well Elev)
Site Error:	0.0 ft	North Reference:	True
Reference Well:	Salt Ranch Fee 203-1807H	Survey Calculation Method:	Minimum Curvature
Well Error:	0.0 ft	Output errors are at	2.00 sigma
Reference Wellbore	Wellbore #1	Database:	US_EDM
Reference Design:	Plan #1 (9-26-17)	Offset TVD Reference:	Offset Datum

Offset Design													Offset Site Error:	0.0 ft		
Survey Program: O-MWD													Salt Ranch Fee 1807H East Pad Sec.18-T11N-R64W - Salt Ranch Fee 502-1807H - Wellbore #1 - Plan		Offset Well Error:	0.0 ft
Reference		Offset		Semi Major Axis			Distance						Warning			
Measured Depth (ft)	Vertical Depth (ft)	Measured Depth (ft)	Vertical Depth (ft)	Reference (ft)	Offset (ft)	Highside Toolface (°)	Offset Wellbore Centre +N/-S (ft)	+E/-W (ft)	Between Centres (ft)	Between Ellipses (ft)	Minimum Separation (ft)	Separation Factor				
8,450.0	8,011.8	8,623.2	8,227.2	21.0	19.8	120.96	325.9	-241.8	419.1	383.3	35.89	11.679				
8,468.8	8,012.0	8,658.8	8,227.0	21.1	20.1	120.89	360.4	-242.1	418.8	382.5	36.34	11.523				
8,468.8	8,012.0	8,658.8	8,227.0	21.1	20.1	120.89	360.4	-242.1	418.8	382.5	36.34	11.523				
8,500.0	8,012.0	8,682.2	8,226.9	21.3	20.3	120.89	383.8	-242.2	418.6	381.9	36.71	11.403				
8,600.0	8,011.9	8,771.0	8,226.7	22.0	21.0	120.91	472.6	-240.8	418.0	380.0	37.97	11.008				
8,643.4	8,011.9	8,809.6	8,226.5	22.4	21.3	120.93	511.1	-239.4	417.6	379.1	38.54	10.836				
8,679.6	8,011.9	8,841.8	8,226.4	22.7	21.6	120.93	543.3	-237.7	417.4	378.3	39.12	10.671				
8,700.0	8,011.8	8,860.5	8,226.4	22.9	21.8	120.92	562.0	-236.6	417.5	378.0	39.46	10.581				
8,800.0	8,011.8	8,960.5	8,226.1	24.0	22.9	120.85	661.8	-230.6	417.9	376.4	41.47	10.077				
8,900.0	8,011.7	9,060.5	8,225.8	25.1	24.1	120.78	761.6	-224.5	418.3	374.6	43.67	9.579				
9,000.0	8,011.6	9,160.5	8,225.5	26.4	25.4	120.71	861.4	-218.5	418.7	372.7	46.01	9.100				
9,100.0	8,011.6	9,260.5	8,225.1	27.7	26.8	120.63	961.2	-212.4	419.1	370.6	48.48	8.645				
9,200.0	8,011.5	9,360.5	8,224.8	29.1	28.2	120.56	1,061.0	-206.4	419.5	368.5	51.06	8.217				
9,300.0	8,011.4	9,460.5	8,224.5	30.5	29.7	120.49	1,160.8	-200.4	419.9	366.2	53.73	7.816				
9,400.0	8,011.4	9,560.5	8,224.2	32.0	31.2	120.42	1,260.7	-194.3	420.3	363.9	56.48	7.442				
9,500.0	8,011.3	9,660.5	8,223.9	33.6	32.8	120.35	1,360.5	-188.3	420.8	361.5	59.31	7.094				
9,600.0	8,011.3	9,760.5	8,223.6	35.1	34.4	120.28	1,460.3	-182.2	421.2	359.0	62.19	6.772				
9,700.0	8,011.2	9,860.4	8,223.3	36.7	36.1	120.21	1,560.1	-176.2	421.6	356.5	65.13	6.473				
9,800.0	8,011.1	9,960.4	8,223.0	38.4	37.7	120.14	1,659.9	-170.1	422.0	353.9	68.12	6.195				
9,900.0	8,011.1	10,060.4	8,222.7	40.0	39.4	120.07	1,759.7	-164.1	422.4	351.3	71.15	5.937				
10,000.0	8,011.0	10,160.4	8,222.4	41.7	41.1	120.00	1,859.5	-158.0	422.8	348.6	74.21	5.697				
10,100.0	8,010.9	10,260.4	8,222.1	43.4	42.8	119.93	1,959.4	-152.0	423.2	345.9	77.31	5.474				
10,200.0	8,010.9	10,360.4	8,221.8	45.1	44.6	119.86	2,059.2	-145.9	423.7	343.2	80.44	5.267				
10,300.0	8,010.8	10,460.4	8,221.4	46.8	46.3	119.79	2,159.0	-139.9	424.1	340.5	83.60	5.073				
10,400.0	8,010.7	10,560.4	8,221.1	48.6	48.1	119.72	2,258.8	-133.8	424.5	337.7	86.78	4.891				
10,500.0	8,010.7	10,660.4	8,220.8	50.3	49.8	119.65	2,358.6	-127.8	424.9	334.9	89.99	4.722				
10,600.0	8,010.6	10,760.4	8,220.5	52.1	51.6	119.58	2,458.4	-121.7	425.3	332.1	93.21	4.563				
10,700.0	8,010.5	10,860.4	8,220.2	53.9	53.4	119.51	2,558.2	-115.7	425.7	329.3	96.45	4.414				
10,800.0	8,010.5	10,960.4	8,219.9	55.7	55.2	119.44	2,658.1	-109.6	426.2	326.5	99.71	4.274				
10,900.0	8,010.4	11,060.4	8,219.6	57.4	57.0	119.37	2,757.9	-103.6	426.6	323.6	102.99	4.142				
11,000.0	8,010.3	11,160.4	8,219.3	59.2	58.8	119.30	2,857.7	-97.5	427.0	320.7	106.28	4.018				
11,100.0	8,010.3	11,260.4	8,219.0	61.1	60.7	119.23	2,957.5	-91.5	427.4	317.8	109.58	3.900				
11,200.0	8,010.2	11,360.4	8,218.7	62.9	62.5	119.16	3,057.3	-85.4	427.9	314.9	112.90	3.790				
11,300.0	8,010.1	11,460.4	8,218.4	64.7	64.3	119.09	3,157.1	-79.4	428.3	312.0	116.23	3.685				
11,400.0	8,010.1	11,560.4	8,218.1	66.5	66.1	119.02	3,256.9	-73.3	428.7	309.1	119.57	3.581				
11,500.0	8,010.0	11,660.4	8,217.7	68.3	68.0	118.96	3,356.8	-67.3	429.1	306.2	122.92	3.491				
11,600.0	8,009.9	11,760.4	8,217.4	70.2	69.8	118.89	3,456.6	-61.2	429.5	303.3	126.29	3.401				
11,700.0	8,009.9	11,860.4	8,217.1	72.0	71.7	118.82	3,556.4	-55.2	430.0	300.3	129.66	3.316				
11,800.0	8,009.8	11,960.4	8,216.8	73.8	73.5	118.75	3,656.2	-49.1	430.4	297.4	133.04	3.235				
11,900.0	8,009.7	12,060.4	8,216.5	75.7	75.4	118.68	3,756.0	-43.1	430.8	294.4	136.43	3.158				
12,000.0	8,009.7	12,160.4	8,216.2	77.5	77.2	118.62	3,855.8	-37.0	431.2	291.4	139.83	3.084				
12,100.0	8,009.6	12,260.4	8,215.9	79.4	79.1	118.55	3,955.6	-31.0	431.7	288.4	143.23	3.014				
12,200.0	8,009.5	12,360.4	8,215.6	81.2	80.9	118.48	4,055.5	-24.9	432.1	285.5	146.64	2.947				
12,300.0	8,009.5	12,460.4	8,215.3	83.1	82.8	118.41	4,155.3	-18.9	432.5	282.5	150.06	2.882				
12,400.0	8,009.4	12,560.4	8,215.0	84.9	84.7	118.35	4,255.1	-12.8	433.0	279.5	153.49	2.821				
12,500.0	8,009.3	12,660.4	8,214.7	86.8	86.5	118.28	4,354.9	-6.8	433.4	276.5	156.93	2.762				
12,600.0	8,009.3	12,760.4	8,214.4	88.7	88.4	118.21	4,454.7	-0.7	433.8	273.5	160.37	2.705				
12,700.0	8,009.2	12,860.4	8,214.1	90.5	90.3	118.15	4,554.5	5.3	434.3	270.4	163.81	2.651				
12,800.0	8,009.1	12,960.4	8,213.7	92.4	92.2	118.08	4,654.3	11.3	434.7	267.4	167.27	2.599				
12,900.0	8,009.1	13,060.4	8,213.4	94.3	94.0	118.01	4,754.2	17.4	435.1	264.4	170.73	2.549				
13,000.0	8,009.0	13,160.4	8,213.1	96.1	95.9	117.95	4,854.0	23.4	435.6	261.4	174.19	2.500				

CC - Min centre to center distance or convergent point, SF - min separation factor, ES - min ellipse separation

Company:	Clear Creek Resource Partners	Local Co-ordinate Reference:	Well Salt Ranch Fee 203-1807H
Project:	SEC.18-T11N-R64W	TVD Reference:	WELL @ 5626.0ft (Original Well Elev)
Reference Site:	Salt Ranch Fee 1807H East Pad Sec.18-T11N-R64W	MD Reference:	WELL @ 5626.0ft (Original Well Elev)
Site Error:	0.0 ft	North Reference:	True
Reference Well:	Salt Ranch Fee 203-1807H	Survey Calculation Method:	Minimum Curvature
Well Error:	0.0 ft	Output errors are at	2.00 sigma
Reference Wellbore	Wellbore #1	Database:	US_EDM
Reference Design:	Plan #1 (9-26-17)	Offset TVD Reference:	Offset Datum

Offset Design													Offset Site Error:	0.0 ft		
Survey Program: O-MWD													Salt Ranch Fee 1807H East Pad Sec.18-T11N-R64W - Salt Ranch Fee 502-1807H - Wellbore #1 - Plan		Offset Well Error:	0.0 ft
Reference		Offset		Semi Major Axis			Distance						Warning			
Measured Depth (ft)	Vertical Depth (ft)	Measured Depth (ft)	Vertical Depth (ft)	Reference (ft)	Offset (ft)	Highside Toolface (°)	Offset Wellbore Centre +N/-S (ft)	+E/-W (ft)	Between Centres (ft)	Between Ellipses (ft)	Minimum Separation (ft)	Separation Factor				
13,010.7	8,009.0	13,171.1	8,213.1	96.3	96.1	117.94	4,864.7	24.1	435.6	261.0	174.56	2.495				
13,100.0	8,008.9	13,269.4	8,212.8	97.9	97.9	117.83	4,962.8	29.3	436.6	258.7	177.93	2.454				
13,200.0	8,008.9	13,385.0	8,212.4	99.5	99.7	117.73	5,078.4	31.2	437.5	256.2	181.33	2.413				
13,300.0	8,008.8	13,500.6	8,212.1	101.1	101.6	117.66	5,194.0	28.5	437.9	253.4	184.49	2.373				
13,353.7	8,008.8	13,562.8	8,211.9	102.0	102.6	117.64	5,256.0	25.1	437.9	251.8	186.10	2.353				
13,400.0	8,008.8	13,612.4	8,211.7	102.8	103.5	117.64	5,305.6	21.5	437.6	249.9	187.62	2.332				
13,500.0	8,008.7	13,712.4	8,211.4	104.7	105.4	117.67	5,405.3	14.1	436.7	245.7	191.04	2.286				
13,600.0	8,008.6	13,812.4	8,211.1	106.6	107.3	117.69	5,505.0	6.8	435.8	241.4	194.45	2.241				
13,700.0	8,008.6	13,912.4	8,210.8	108.5	109.2	117.72	5,604.7	-0.6	434.9	237.1	197.87	2.198				
13,800.0	8,008.5	14,012.4	8,210.5	110.4	111.1	117.74	5,704.5	-8.0	434.1	232.8	201.29	2.156				
13,900.0	8,008.5	14,112.4	8,210.2	112.4	113.0	117.76	5,804.2	-15.4	433.2	228.5	204.71	2.116				
14,000.0	8,008.4	14,212.4	8,209.9	114.3	114.9	117.79	5,903.9	-22.8	432.3	224.2	208.13	2.077				
14,100.0	8,008.3	14,312.4	8,209.6	116.2	116.9	117.82	6,003.6	-30.2	431.4	219.9	211.55	2.039				
14,200.0	8,008.3	14,412.4	8,209.3	118.1	118.8	117.84	6,103.3	-37.6	430.5	215.6	214.97	2.003				
14,300.0	8,008.2	14,512.4	8,209.0	120.0	120.7	117.87	6,203.1	-45.0	429.7	211.3	218.40	1.967				
14,400.0	8,008.2	14,612.4	8,208.7	122.0	122.6	117.89	6,302.8	-52.4	428.8	207.0	221.82	1.933				
14,500.0	8,008.1	14,712.4	8,208.4	123.9	124.5	117.92	6,402.5	-59.8	427.9	202.7	225.24	1.900				
14,600.0	8,008.0	14,812.4	8,208.1	125.8	126.4	117.94	6,502.2	-67.2	427.0	198.4	228.66	1.868				
14,700.0	8,008.0	14,912.4	8,207.8	127.7	128.4	117.97	6,602.0	-74.6	426.2	194.1	232.09	1.836				
14,800.0	8,007.9	15,012.4	8,207.5	129.7	130.3	117.99	6,701.7	-82.0	425.3	189.8	235.51	1.806				
14,900.0	8,007.9	15,112.4	8,207.2	131.6	132.2	118.02	6,801.4	-89.4	424.4	185.5	238.93	1.776				
15,000.0	8,007.8	15,212.4	8,206.9	133.5	134.1	118.05	6,901.1	-96.8	423.5	181.2	242.36	1.748				
15,100.0	8,007.7	15,312.4	8,206.6	135.4	136.1	118.07	7,000.8	-104.2	422.7	176.9	245.78	1.720				
15,200.0	8,007.7	15,412.3	8,206.3	137.4	138.0	118.10	7,100.6	-111.6	421.8	172.6	249.20	1.693				
15,300.0	8,007.6	15,512.3	8,206.0	139.3	139.9	118.12	7,200.3	-119.0	420.9	168.3	252.62	1.666				
15,400.0	8,007.6	15,612.3	8,205.7	141.2	141.9	118.15	7,300.0	-126.4	420.0	164.0	256.05	1.640				
15,500.0	8,007.5	15,712.3	8,205.4	143.2	143.8	118.18	7,399.7	-133.8	419.2	159.7	259.47	1.615				
15,600.0	8,007.4	15,812.3	8,205.1	145.1	145.7	118.20	7,499.4	-141.2	418.3	155.4	262.89	1.591				
15,700.0	8,007.4	15,912.3	8,204.8	147.0	147.6	118.23	7,599.2	-148.5	417.4	151.1	266.31	1.567				
15,800.0	8,007.3	16,012.3	8,204.5	148.9	149.6	118.26	7,698.9	-155.9	416.5	146.8	269.73	1.544				
15,900.0	8,007.2	16,112.3	8,204.2	150.9	151.5	118.29	7,798.6	-163.3	415.6	142.5	273.15	1.522				
16,000.0	8,007.2	16,212.3	8,203.9	152.8	153.4	118.31	7,898.3	-170.7	414.8	138.2	276.56	1.500 Level 3				
16,100.0	8,007.1	16,312.3	8,203.6	154.7	155.4	118.34	7,998.1	-178.1	413.9	133.9	279.98	1.478 Level 3				
16,200.0	8,007.1	16,412.3	8,203.3	156.7	157.3	118.37	8,097.8	-185.5	413.0	129.6	283.40	1.457 Level 3				
16,300.0	8,007.0	16,512.3	8,203.0	158.6	159.2	118.39	8,197.5	-192.9	412.1	125.3	286.81	1.437 Level 3				
16,400.0	8,006.9	16,612.3	8,202.7	160.5	161.2	118.42	8,297.2	-200.3	411.3	121.0	290.23	1.417 Level 3				
16,500.0	8,006.9	16,712.3	8,202.4	162.5	163.1	118.45	8,396.9	-207.7	410.4	116.8	293.64	1.398 Level 3				
16,600.0	8,006.8	16,812.3	8,202.1	164.4	165.0	118.48	8,496.7	-215.1	409.5	112.5	297.05	1.379 Level 3				
16,700.0	8,006.8	16,912.3	8,201.8	166.4	167.0	118.51	8,596.4	-222.5	408.6	108.2	300.46	1.360 Level 3				
16,800.0	8,006.7	17,012.3	8,201.5	168.3	168.9	118.53	8,696.1	-229.9	407.8	103.9	303.87	1.342 Level 3				
16,900.0	8,006.6	17,112.3	8,201.2	170.2	170.9	118.56	8,795.8	-237.3	406.9	99.6	307.28	1.324 Level 3				
17,000.0	8,006.6	17,212.3	8,200.9	172.2	172.8	118.59	8,895.6	-244.7	406.0	95.3	310.69	1.307 Level 3				
17,100.0	8,006.5	17,312.3	8,200.6	174.1	174.7	118.62	8,995.3	-252.1	405.1	91.0	314.10	1.290 Level 3				
17,200.0	8,006.5	17,412.3	8,200.3	176.0	176.7	118.65	9,095.0	-259.5	404.3	86.8	317.50	1.273 Level 3				
17,300.0	8,006.4	17,512.3	8,200.0	178.0	178.6	118.68	9,194.7	-266.9	403.4	82.5	320.91	1.257 Level 3				
17,400.0	8,006.3	17,612.3	8,199.7	179.9	180.6	118.71	9,294.4	-274.3	402.5	78.2	324.31	1.241 Level 2				
17,500.0	8,006.3	17,712.3	8,199.4	181.9	182.5	118.73	9,394.2	-281.7	401.6	73.9	327.71	1.226 Level 2				
17,600.0	8,006.2	17,812.3	8,199.1	183.8	184.4	118.76	9,493.9	-289.1	400.8	69.7	331.11	1.210 Level 2				
17,700.0	8,006.2	17,912.2	8,198.8	185.7	186.4	118.79	9,593.6	-296.5	399.9	65.4	334.51	1.195 Level 2				
17,800.0	8,006.1	18,012.2	8,198.5	187.7	188.3	118.82	9,693.3	-303.8	399.0	61.1	337.91	1.181 Level 2				
17,900.0	8,006.0	18,112.2	8,198.2	189.6	190.3	118.85	9,793.0	-311.2	398.2	56.9	341.30	1.167 Level 2				

CC - Min centre to center distance or convergent point, SF - min separation factor, ES - min ellipse separation

Company:	Clear Creek Resource Partners	Local Co-ordinate Reference:	Well Salt Ranch Fee 203-1807H
Project:	SEC.18-T11N-R64W	TVD Reference:	WELL @ 5626.0ft (Original Well Elev)
Reference Site:	Salt Ranch Fee 1807H East Pad Sec.18-T11N-R64W	MD Reference:	WELL @ 5626.0ft (Original Well Elev)
Site Error:	0.0 ft	North Reference:	True
Reference Well:	Salt Ranch Fee 203-1807H	Survey Calculation Method:	Minimum Curvature
Well Error:	0.0 ft	Output errors are at	2.00 sigma
Reference Wellbore	Wellbore #1	Database:	US_EDM
Reference Design:	Plan #1 (9-26-17)	Offset TVD Reference:	Offset Datum

Offset Design													Offset Site Error:	0.0 ft
Salt Ranch Fee 1807H East Pad Sec.18-T11N-R64W - Salt Ranch Fee 502-1807H - Wellbore #1 - Plan													Offset Well Error:	0.0 ft
Survey Program: 0-MWD														
Reference		Offset		Semi Major Axis			Distance							
Measured Depth (ft)	Vertical Depth (ft)	Measured Depth (ft)	Vertical Depth (ft)	Reference (ft)	Offset (ft)	Highside Toolface (°)	Offset Wellbore Centre +N/-S (ft)	+E/-W (ft)	Between Centres (ft)	Between Ellipses (ft)	Minimum Separation (ft)	Separation Factor	Warning	
17,954.1	8,006.0	18,166.2	8,198.0	190.7	191.3	118.87	9,846.8	-315.2	397.7	54.5	343.13	1.159	Level 2	
17,975.2	8,006.0	18,166.2	8,198.0	191.1	191.3	118.87	9,846.8	-315.2	398.1	54.6	343.50	1.159	Level 2, SF	

Company:	Clear Creek Resource Partners	Local Co-ordinate Reference:	Well Salt Ranch Fee 203-1807H
Project:	SEC.18-T11N-R64W	TVD Reference:	WELL @ 5626.0ft (Original Well Elev)
Reference Site:	Salt Ranch Fee 1807H East Pad Sec.18-T11N-R64W	MD Reference:	WELL @ 5626.0ft (Original Well Elev)
Site Error:	0.0 ft	North Reference:	True
Reference Well:	Salt Ranch Fee 203-1807H	Survey Calculation Method:	Minimum Curvature
Well Error:	0.0 ft	Output errors are at	2.00 sigma
Reference Wellbore	Wellbore #1	Database:	US_EDM
Reference Design:	Plan #1 (9-26-17)	Offset TVD Reference:	Offset Datum

Offset Design													Offset Site Error:	0.0 ft		
Survey Program: O-MWD													Salt Ranch Fee 1807H East Pad Sec.18-T11N-R64W - Salt Ranch Fee 503-1807H - Wellbore #1 - Plan		Offset Well Error:	0.0 ft
Reference		Offset		Semi Major Axis			Distance						Warning			
Measured Depth (ft)	Vertical Depth (ft)	Measured Depth (ft)	Vertical Depth (ft)	Reference (ft)	Offset (ft)	Highside Toolface (°)	Offset Wellbore Centre +N/-S (ft)	+E/-W (ft)	Between Centres (ft)	Between Ellipses (ft)	Minimum Separation (ft)	Separation Factor				
0.0	0.0	0.0	0.0	0.0	0.0	-89.30	0.4	-29.9	29.9							
100.0	100.0	100.0	100.0	0.1	0.1	-89.30	0.4	-29.9	29.9	29.6	0.22	132.815				
200.0	200.0	200.0	200.0	0.3	0.3	-89.30	0.4	-29.9	29.9	29.2	0.67	44.272				
300.0	300.0	300.0	300.0	0.6	0.6	-89.30	0.4	-29.9	29.9	28.7	1.12	26.563				
400.0	400.0	400.0	400.0	0.8	0.8	-89.30	0.4	-29.9	29.9	28.3	1.57	18.974	CC, ES			
500.0	500.0	499.2	499.2	1.0	1.0	-90.08	0.0	-31.1	31.1	29.1	2.00	15.502				
600.0	600.0	598.4	598.3	1.2	1.2	-92.10	-1.3	-34.7	34.8	32.4	2.43	14.307				
700.0	700.0	697.3	697.0	1.4	1.4	-27.57	-3.3	-40.8	39.9	37.1	2.84	14.024				
800.0	799.9	796.1	795.4	1.6	1.7	26.92	-6.2	-49.3	45.2	41.9	3.26	13.881				
900.0	899.7	894.7	893.3	1.8	1.9	27.03	-9.8	-60.2	50.7	47.0	3.69	13.748				
1,000.0	999.3	993.2	990.9	2.1	2.2	27.66	-14.3	-73.4	56.3	52.2	4.13	13.623				
1,100.0	1,098.6	1,091.6	1,087.8	2.3	2.6	28.67	-19.5	-89.0	62.1	57.5	4.60	13.498				
1,138.3	1,136.5	1,129.2	1,124.8	2.4	2.7	29.13	-21.7	-95.6	64.4	59.6	4.79	13.445	SF			
1,200.0	1,197.6	1,189.8	1,184.1	2.6	2.9	29.77	-25.5	-107.0	68.6	63.5	5.10	13.456				
1,300.0	1,296.6	1,287.6	1,279.6	2.9	3.4	30.19	-32.3	-127.2	77.4	71.8	5.61	13.786				
1,400.0	1,395.6	1,385.9	1,375.1	3.2	3.8	30.08	-39.8	-149.6	88.3	82.2	6.14	14.380				
1,500.0	1,494.6	1,485.3	1,471.4	3.6	4.3	29.92	-47.5	-172.5	99.6	92.9	6.68	14.918				
1,600.0	1,593.6	1,584.6	1,567.8	3.9	4.8	29.79	-55.2	-195.5	110.9	103.7	7.22	15.355				
1,700.0	1,692.7	1,684.0	1,664.2	4.2	5.3	29.69	-62.9	-218.5	122.2	114.4	7.78	15.720				
1,800.0	1,791.7	1,783.4	1,760.5	4.6	5.8	29.61	-70.6	-241.5	133.5	125.2	8.33	16.026				
1,900.0	1,890.7	1,882.7	1,856.9	4.9	6.3	29.53	-78.3	-264.4	144.8	135.9	8.89	16.287				
2,000.0	1,989.7	1,982.1	1,953.2	5.2	6.8	29.47	-86.0	-287.4	156.1	146.7	9.46	16.512				
2,100.0	2,088.7	2,081.4	2,049.6	5.6	7.4	29.42	-93.7	-310.4	167.4	157.4	10.02	16.706				
2,200.0	2,187.7	2,180.8	2,145.9	5.9	7.9	29.37	-101.5	-333.4	178.8	168.2	10.59	16.876				
2,300.0	2,286.7	2,280.2	2,242.3	6.3	8.4	29.33	-109.2	-356.3	190.1	178.9	11.16	17.025				
2,400.0	2,385.7	2,379.5	2,338.7	6.6	8.9	29.30	-116.9	-379.3	201.4	189.6	11.74	17.158				
2,500.0	2,484.7	2,478.9	2,435.0	7.0	9.4	29.26	-124.6	-402.3	212.7	200.4	12.31	17.276				
2,600.0	2,583.7	2,578.2	2,531.4	7.3	10.0	29.24	-132.3	-425.2	224.0	211.1	12.89	17.382				
2,700.0	2,682.7	2,677.6	2,627.7	7.7	10.5	29.21	-140.0	-448.2	235.3	221.8	13.46	17.478				
2,800.0	2,781.7	2,776.9	2,724.1	8.0	11.0	29.19	-147.7	-471.2	246.6	232.6	14.04	17.564				
2,900.0	2,880.8	2,876.3	2,820.5	8.4	11.5	29.16	-155.4	-494.2	257.9	243.3	14.62	17.643				
3,000.0	2,979.8	2,975.7	2,916.8	8.7	12.1	29.14	-163.1	-517.1	269.2	254.0	15.20	17.715				
3,100.0	3,078.8	3,075.0	3,013.2	9.1	12.6	29.13	-170.8	-540.1	280.5	264.7	15.78	17.780				
3,200.0	3,177.8	3,174.4	3,109.5	9.4	13.1	29.11	-178.5	-563.1	291.8	275.5	16.36	17.841				
3,300.0	3,276.8	3,273.7	3,205.9	9.8	13.7	29.09	-186.2	-586.1	303.1	286.2	16.94	17.897				
3,400.0	3,375.8	3,373.1	3,302.3	10.1	14.2	29.08	-193.9	-609.0	314.4	296.9	17.52	17.948				
3,500.0	3,474.8	3,472.5	3,398.6	10.5	14.7	29.06	-201.6	-632.0	325.7	307.6	18.10	17.996				
3,600.0	3,573.8	3,571.8	3,495.0	10.8	15.2	29.05	-209.3	-655.0	337.0	318.4	18.68	18.041				
3,700.0	3,672.8	3,671.2	3,591.3	11.2	15.8	29.04	-217.1	-678.0	348.4	329.1	19.27	18.082				
3,800.0	3,771.8	3,770.5	3,687.7	11.5	16.3	29.03	-224.8	-700.9	359.7	339.8	19.85	18.121				
3,900.0	3,870.8	3,869.9	3,784.0	11.9	16.8	29.02	-232.5	-723.9	371.0	350.5	20.43	18.157				
4,000.0	3,969.9	3,969.2	3,880.4	12.2	17.4	29.01	-240.2	-746.9	382.3	361.3	21.01	18.191				
4,100.0	4,068.9	4,068.6	3,976.8	12.6	17.9	29.00	-247.9	-769.8	393.6	372.0	21.60	18.223				
4,200.0	4,167.9	4,168.0	4,073.1	12.9	18.4	28.99	-255.6	-792.8	404.9	382.7	22.18	18.253				
4,300.0	4,266.9	4,267.3	4,169.5	13.3	18.9	28.98	-263.3	-815.8	416.2	393.4	22.77	18.282				
4,400.0	4,365.9	4,366.7	4,265.8	13.6	19.5	28.98	-271.0	-838.8	427.5	404.2	23.35	18.308				
4,500.0	4,464.9	4,466.0	4,362.2	14.0	20.0	28.97	-278.7	-861.7	438.8	414.9	23.93	18.334				
4,600.0	4,563.9	4,565.4	4,458.6	14.4	20.5	28.96	-286.4	-884.7	450.1	425.6	24.52	18.358				
4,700.0	4,662.9	4,664.8	4,554.9	14.7	21.1	28.95	-294.1	-907.7	461.4	436.3	25.10	18.381				
4,800.0	4,761.9	4,764.1	4,651.3	15.1	21.6	28.95	-301.8	-930.7	472.7	447.0	25.69	18.402				
4,900.0	4,860.9	4,863.5	4,747.6	15.4	22.1	28.94	-309.5	-953.6	484.0	457.8	26.27	18.423				

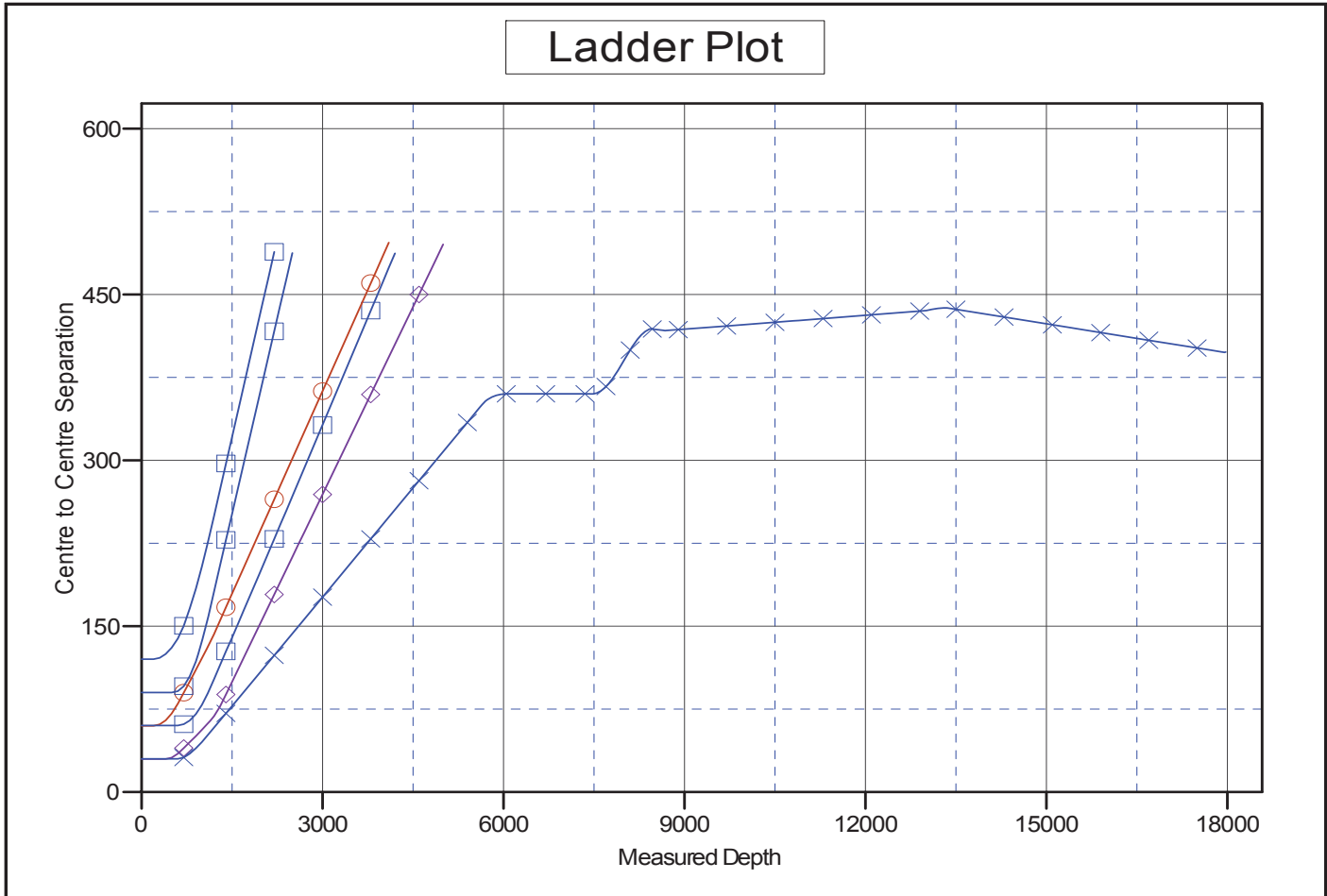
CC - Min centre to center distance or convergent point, SF - min separation factor, ES - min ellipse separation

Company:	Clear Creek Resource Partners	Local Co-ordinate Reference:	Well Salt Ranch Fee 203-1807H
Project:	SEC.18-T11N-R64W	TVD Reference:	WELL @ 5626.0ft (Original Well Elev)
Reference Site:	Salt Ranch Fee 1807H East Pad Sec.18-T11N-R64W	MD Reference:	WELL @ 5626.0ft (Original Well Elev)
Site Error:	0.0 ft	North Reference:	True
Reference Well:	Salt Ranch Fee 203-1807H	Survey Calculation Method:	Minimum Curvature
Well Error:	0.0 ft	Output errors are at	2.00 sigma
Reference Wellbore	Wellbore #1	Database:	US_EDM
Reference Design:	Plan #1 (9-26-17)	Offset TVD Reference:	Offset Datum

Offset Design												Offset Site Error:	0.0 ft	
Salt Ranch Fee 1807H East Pad Sec.18-T11N-R64W - Salt Ranch Fee 503-1807H - Wellbore #1 - Plan												Offset Well Error:	0.0 ft	
Survey Program: 0-MWD														
Reference		Offset		Semi Major Axis			Distance							
Measured Depth (ft)	Vertical Depth (ft)	Measured Depth (ft)	Vertical Depth (ft)	Reference (ft)	Offset (ft)	Highside Toolface (°)	Offset Wellbore Centre +N/-S (ft)	+E/-W (ft)	Between Centres (ft)	Between Ellipses (ft)	Minimum Separation (ft)	Separation Factor	Warning	
5,000.0	4,959.9	4,962.8	4,844.0	15.8	22.7	28.94	-317.2	-976.6	495.3	468.5	26.86	18.442		

Company:	Clear Creek Resource Partners	Local Co-ordinate Reference:	Well Salt Ranch Fee 203-1807H
Project:	SEC.18-T11N-R64W	TVD Reference:	WELL @ 5626.0ft (Original Well Elev)
Reference Site:	Salt Ranch Fee 1807H East Pad Sec.18-T11N-R64W	MD Reference:	WELL @ 5626.0ft (Original Well Elev)
Site Error:	0.0 ft	North Reference:	True
Reference Well:	Salt Ranch Fee 203-1807H	Survey Calculation Method:	Minimum Curvature
Well Error:	0.0 ft	Output errors are at	2.00 sigma
Reference Wellbore	Wellbore #1	Database:	US_EDM
Reference Design:	Plan #1 (9-26-17)	Offset TVD Reference:	Offset Datum

Reference Depths are relative to WELL @ 5626.0ft (Original Well Elev) Coordinates are relative to: Salt Ranch Fee 203-1807H
 Offset Depths are relative to Offset Datum Coordinate System is US State Plane 1983, Colorado Northern Zone
 Central Meridian is -105.500000 Grid Convergence at Surface is: 0.59°

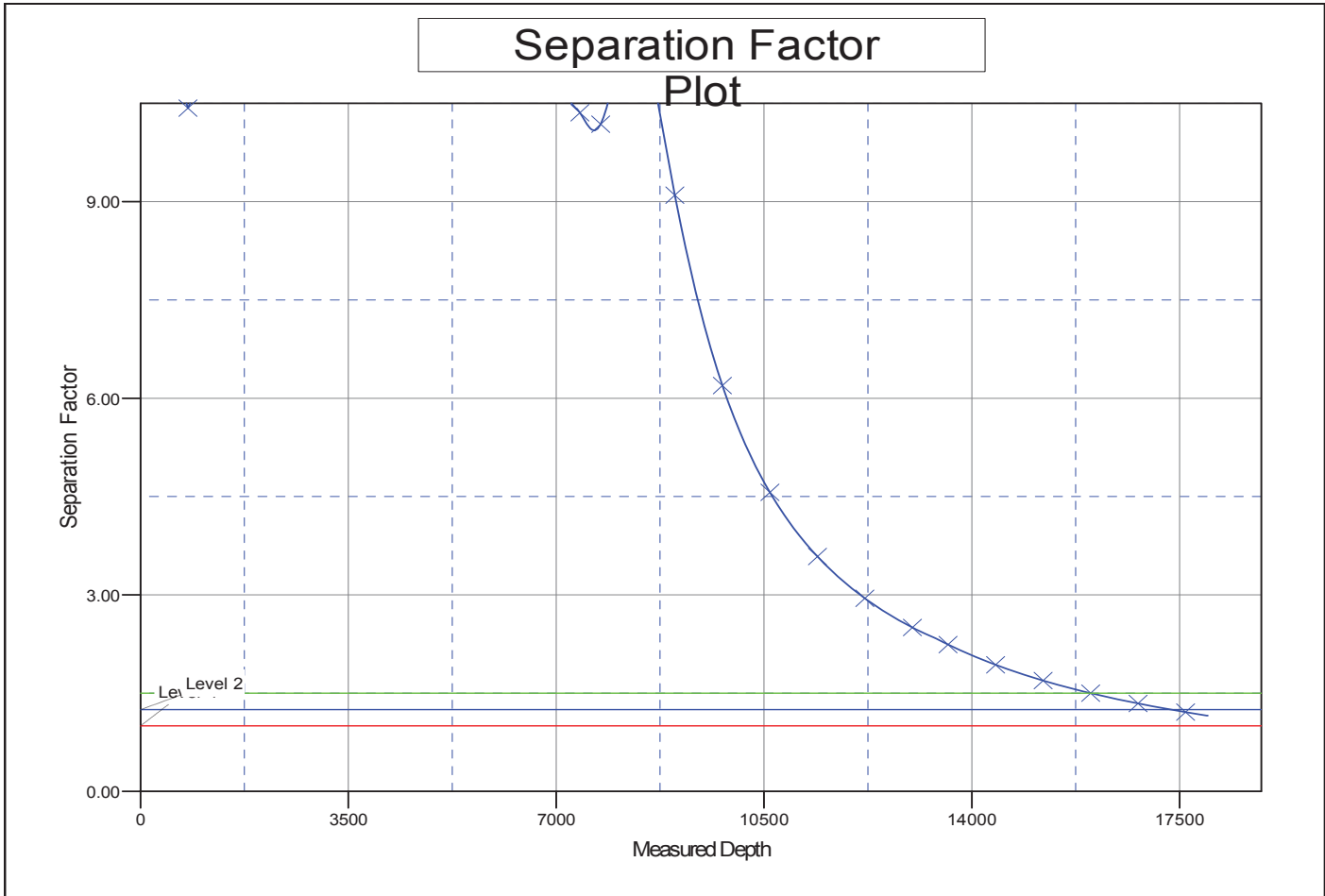


LEGEND

- e 204-1807H, Wellbore #1, Plan # 1 (9-26-17) V0 Salt Ranch Fee 201-1807H, Wellbore #1, Plan #1 (9-26-17) V0 Salt Ranch Fee 501-1807H, Wellbore #1, P
- e 503-1807H, Wellbore #1, Plan # 1 (9-26-17) V0 Salt Ranch Fee 502-1807H, Wellbore #1, Plan #1 (9-26-17) V0 Salt Ranch Fee 202-1807H, Wellbore #1, P

Company:	Clear Creek Resource Partners	Local Co-ordinate Reference:	Well Salt Ranch Fee 203-1807H
Project:	SEC.18-T11N-R64W	TVD Reference:	WELL @ 5626.0ft (Original Well Elev)
Reference Site:	Salt Ranch Fee 1807H East Pad Sec.18-T11N-R64W	MD Reference:	WELL @ 5626.0ft (Original Well Elev)
Site Error:	0.0 ft	North Reference:	True
Reference Well:	Salt Ranch Fee 203-1807H	Survey Calculation Method:	Minimum Curvature
Well Error:	0.0 ft	Output errors are at	2.00 sigma
Reference Wellbore	Wellbore #1	Database:	US_EDM
Reference Design:	Plan #1 (9-26-17)	Offset TVD Reference:	Offset Datum

Reference Depths are relative to WELL @ 5626.0ft (Original Well Elev) Coordinates are relative to: Salt Ranch Fee 203-1807H
 Offset Depths are relative to Offset Datum Coordinate System is US State Plane 1983, Colorado Northern Zone
 Central Meridian is -105.500000 Grid Convergence at Surface is: 0.59°



LEGEND

- e 204-1807H, Wellbore #1, Plan # 1 (9-26-17) V0
- e 503-1807H, Wellbore #1, Plan # 1 (9-26-17) V0
- Salt Ranch Fee 201-1807H, Wellbore #1, Plan #1 (9-26-17) V0
- Salt Ranch Fee 502-1807H, Wellbore #1, Plan #1 (9-26-17) V0
- Salt Ranch Fee 501-1807H, Wellbore #1, P
- Salt Ranch Fee 202-1807H, Wellbore #1, P