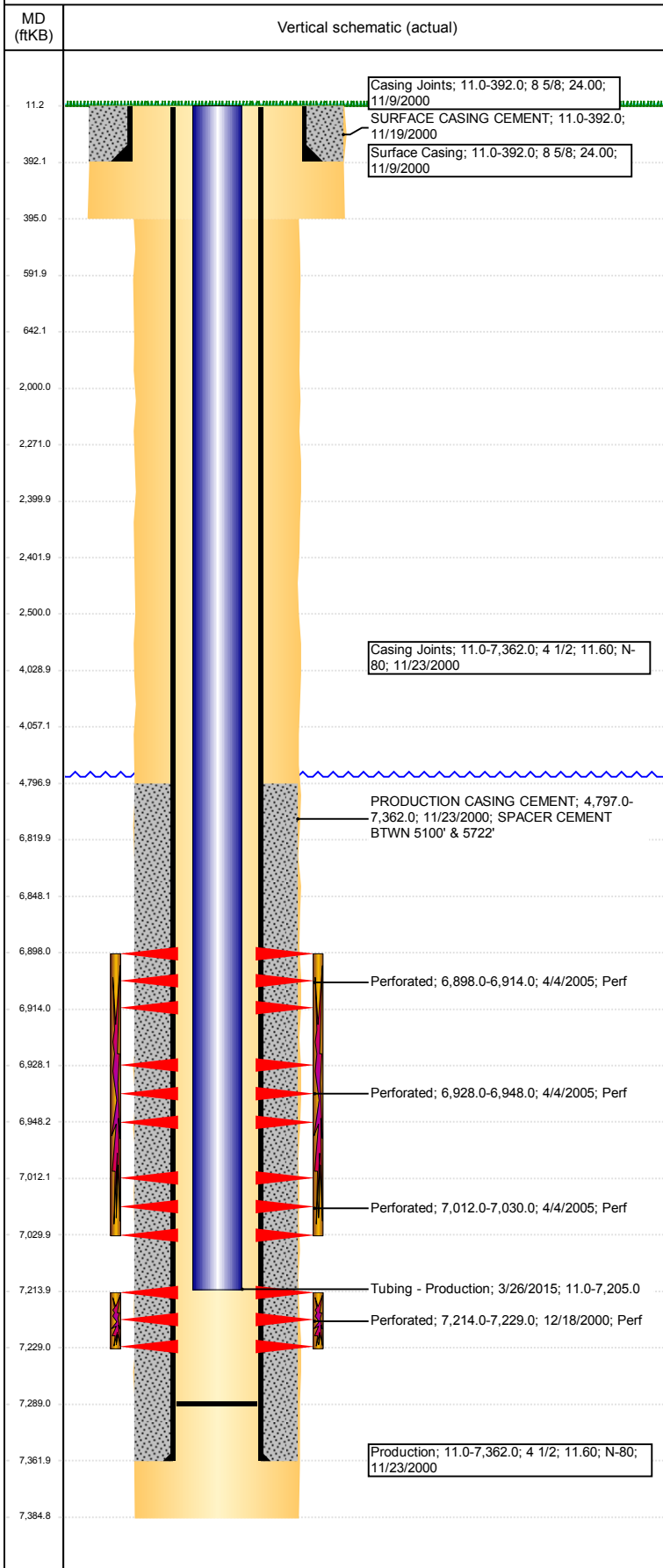


Well Name: KAMMERZELL K04-14

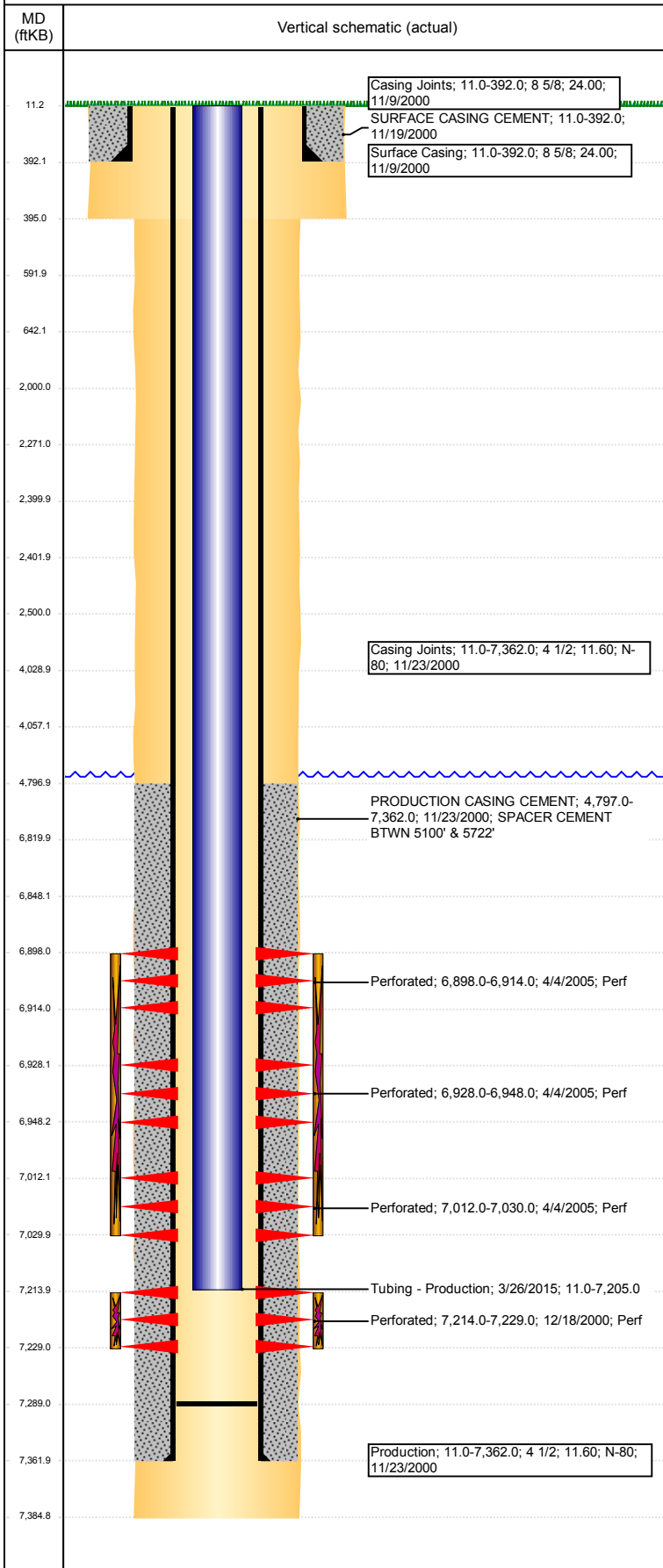
VERTICAL - ORIGINAL HOLE, 11/1/2017 2:30:49 PM



Well Header								
API 05-123-20096	Business Unit DJ BASIN		District 15		Well Config VERTICAL			
Original KB Elevation (ft) 4,705	KB - GL / MSL (ftKB) 11.00		Spud Date 11/18/2000		P & A Date			
Comment FRAC'D INTO 7/02 BY KAMMERZELL #1; CBP @ +/- 7100'								
Directions To Well RDS 396 & 27.5, EAST 1/10, SOUTH 1/10, EAST 7/10 INTO.								
Congressional Location								
Quarter 3 SE	Quarter 4 SW	Section 4	Township 4	Twnshp N/S Dir N	Range 66	Range E/W Dir W		
Bottom Hole Location								
North-South Distance (ft)		From N or S Line		East-West Distance (ft)		From E or W Line		
Plug Back Total Depths								
Date	Depth (ftKB)	Method		Com				
11/23/2000	7,339.0	CASING TALLY		TAG WITH BIT AND SCRAPER. NO C/O				
12/6/2000	7,338.0	CASED HOLE LOG						
6/25/2009	7,293.0	TUBING TALLY						
7/22/2009	7,294.5	TAG						
3/26/2015	7,289.0	TAG						
Wellbore Sections								
Section Des		Size (in)		Act Top, MD (ftKB)		Act Btm, MD (ftKB)		
SURFACE		12 1/4		11		395		
PRODUCTION		7 7/8		395		7,385		
Zone Statuses								
Zone Name	Status Date	Status	Fluid Type	Job	Prod Method			
NIOBRARA	4/15/2005	PR	Water Water	RECOMPLETI...	Flowing Flowing			
CODELL	12/14/2000	PR		DRILLING/CO...				
CODELL	4/4/2005	SI		RECOMPLETI...				
CODELL	8/6/2009	PR		RE-FRAC, 6/25...				
CODELL	1/27/2010	PR						
CODELL	1/27/2010	PR						
CODELL	9/22/2016	SI						
Casing Strings								
Surface Casing, 392.0ftKB								
Casing Description	Run Date	OD (in)	Wt/Len (l...	Grade	Top, MD (ft...	MD (ftKB)		
Surface Casing	11/9/2000	8 5/8	24.00		11.0	392.0		
Production, 7,362.0ftKB								
Casing Description	Run Date	OD (in)	Wt/Len (l...	Grade	Top, MD (ft...	MD (ftKB)		
Production	11/23/2000	4 1/2	11.60	N-80	11.0	7,362.0		
Cement								
Description				Top Depth (ftKB)		Bottom Depth (ftKB)		
SURFACE CASING CEMENT				11.0		392.0		
Description				Top Depth (ftKB)		Bottom Depth (ftKB)		
PRODUCTION CASING CEMENT				4,797.0		7,362.0		
Description				Top Depth (ftKB)		Bottom Depth (ftKB)		
PA Plug - TOP CICR				2,271.0		2,400.0		
Description				Top Depth (ftKB)		Bottom Depth (ftKB)		
PA Plug - BELOW CICR				2,402.0		2,500.0		
Description				Top Depth (ftKB)		Bottom Depth (ftKB)		
				11.2		592.0		
Description				Top Depth (ftKB)		Bottom Depth (ftKB)		
STUB PLUG				592.0		642.0		
Description				Top Depth (ftKB)		Bottom Depth (ftKB)		
PA Plug				2,000.0		2,500.0		
Tubing Strings								
Tubing Description		Run Date	String...	ID (in)	Wt (lb/ft)	Grade	Len (ft)	Set De...
Tubing - Production		12/7/2000	2 3/8	2.00	4.70	J-55	7,193.00	
Tubing Components								
Item Des		OD (in)	Wt (lb/ft)	Grade	Jts	Len (ft)	Btm (ftKB)	Btm (TVD) (ftKB)
Tubing		2 3/8	4.70	J-55	234	7,193.00	7,204.0	
Tubing Description		Run Date	String...	ID (in)	Wt (lb/ft)	Grade	Len (ft)	Set De...
Tubing - Frac string		6/26/2009	2 7/8	2.44	6.50	N-80	7,104.16	

Well Name: KAMMERZELL K04-14

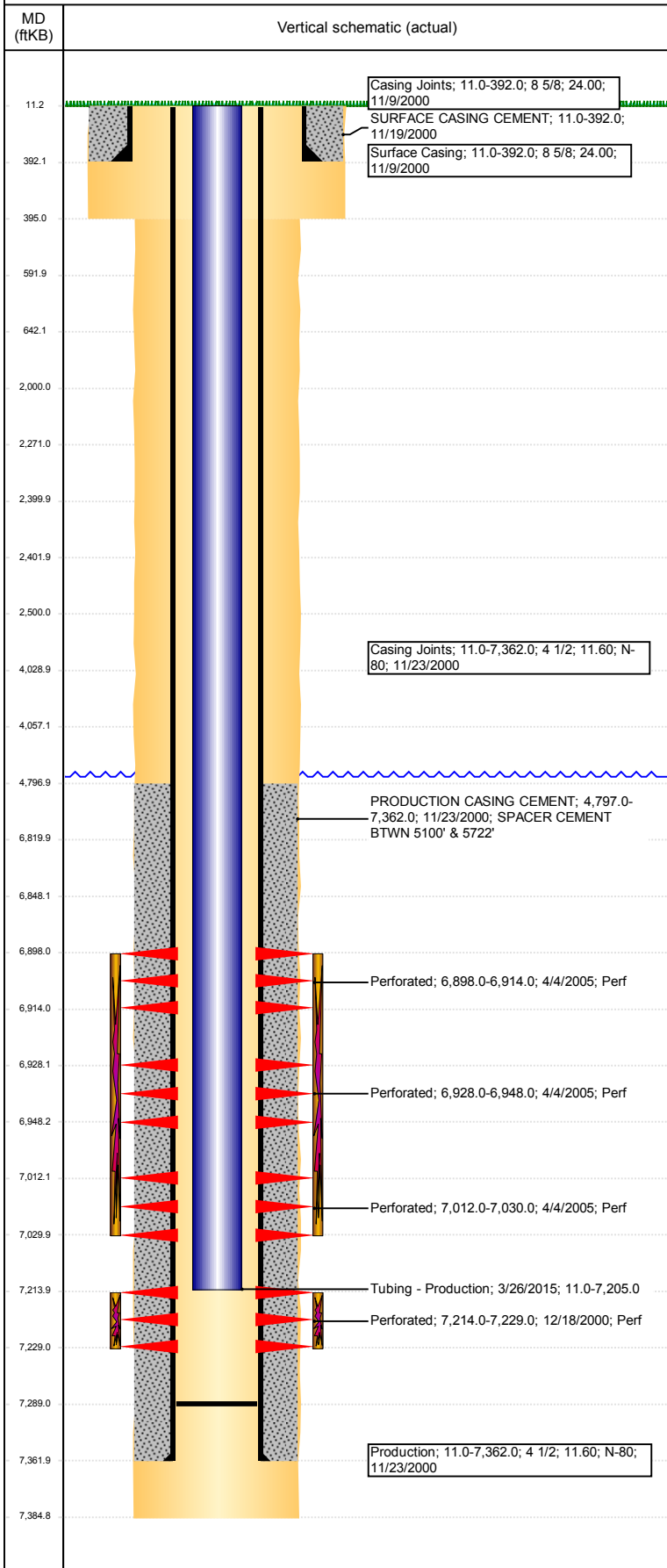
VERTICAL - ORIGINAL HOLE, 11/1/2017 2:30:49 PM



Tubing Components								
Item Des	OD (in)	Wt (lb/ft)	Grade	Jts	Len (ft)	Btm (ftKB)	Btm (TVD) (ftKB)	
Cross Over	2 7/8		N-80	1	0.65	9.7		
Tubing	2 7/8	6.50	N-80	210	6,781.93	6,791.6		
Cross Over	2 7/8	6.50	N-80	1	1.10	6,792.7		
Tubing	2 3/8	4.70	N-80	10	312.83	7,105.5		
Packer	4			1	7.65	7,113.2		
Tubing Description		Run Date	String...	ID (in)	Wt (lb/ft)	Grade	Len (ft)	Set De...
Tubing - Production		7/22/2009	2 3/8	2.00	4.70	J-55	7,186.30	
Tubing Components								
Item Des	OD (in)	Wt (lb/ft)	Grade	Jts	Len (ft)	Btm (ftKB)	Btm (TVD) (ftKB)	
Tubing	2 3/8	4.70	J-55	231	7,184.80	7,193.3		
Pump Seating Nipple	2 3/8			1	1.10	7,194.4		
Notched collar	2 3/8			1	0.40	7,194.8		
Tubing Description		Run Date	String...	ID (in)	Wt (lb/ft)	Grade	Len (ft)	Set De...
Tubing - Workstring		8/12/2014	2 3/8	2.00	4.70	J-55	6,305.00	
Tubing Components								
Item Des	OD (in)	Wt (lb/ft)	Grade	Jts	Len (ft)	Btm (ftKB)	Btm (TVD) (ftKB)	
Tubing	2 3/8	4.70	J-55	200	6,300.00	6,311.0		
On-Off Tool	2 3/8			1	5.00	6,316.0		
Tubing Description		Run Date	String...	ID (in)	Wt (lb/ft)	Grade	Len (ft)	Set De...
Tubing - Production		3/26/2015	2 3/8	2.00	4.70	J-55	7,194.00	
Tubing Components								
Item Des	OD (in)	Wt (lb/ft)	Grade	Jts	Len (ft)	Btm (ftKB)	Btm (TVD) (ftKB)	
EUE 8rd Tubing	2 3/8	4.70	J-55	232	7,192.40	7,203.4		
Pump Seating Nipple	2 3/8	1.10		1	1.10	7,204.5		
Notched collar	2 3/8			1	0.50	7,205.0		
Other In Hole								
Run Date	Des				OD (in)	Top (ftKB)	Btm (ftKB)	
10/25/2017	Cast Iron Bridge Plug w/ 2 SX Cement				4	6,820.0	6,848.0	
10/25/2017	Cast Iron Bridge Plug w/ 2 SX Cement				4	4,029.0	4,057.0	
10/25/2017	Cement Retainer				4	2,400.0	2,402.0	
Logs								
Date	Type					Top, MD (ftKB)	Btm, MD (ftKB)	
11/23/2000	Compensated DENSITY GAMMA RAY CALIPER					4,200.0	7,368.0	
11/23/2000	DUAL INDUCTION GUARD LOG GAMMA RAY					392.0	7,385.0	
12/6/2000	GAMMA RAY CEMENT BOND VDL					4,200.0	7,330.0	
Perforation Data								
Linked Zone	Bnch/St g	Sum of Entered Shot Total	Top (ftKB)		Btm (ftKB)		Date	
CODELL, ORIGINAL HOLE		0	2,500.00		2,500.00		10/25/2017	
NIORARA, ORIGINAL HOLE	A	96	6,898.00		6,914.00		4/4/2005	
NIORARA, ORIGINAL HOLE	B	120	6,928.00		6,948.00		4/4/2005	
NIORARA, ORIGINAL HOLE		108	7,012.00		7,030.00		4/4/2005	
CODELL, ORIGINAL HOLE		60	7,214.00		7,229.00		12/18/2000	
Total (Sum)		384						
Stimulation Intervals								
Start Date		Primary Job Type						
12/8/2000		DRILLING/COMPLETION - ORIGINAL						
Technical Result		Tech Result Details				Tech Result Note		
Comment								
DEADSTRING FRAC								

Well Name: KAMMERZELL K04-14

VERTICAL - ORIGINAL HOLE, 11/1/2017 2:30:49 PM



Stimulation Intervals

Start Date 4/13/2005	Primary Job Type RECOMPLETION	
Technical Result	Tech Result Details	Tech Result Note
Comment CSG FRAC		
Start Date 7/14/2009	Primary Job Type RE-FRAC	
Technical Result Success	Tech Result Details According to Plan	Tech Result Note
Comment (CODELL): RAN FRAC AS A CONCURRENT FRAC WITH THE KAMMERZELL #1. FRAC RATE AT 18 BPM. RAN THE 3 PSA STAGE AS A 2-4 PSA RAMP STAGE. LOST FRAC PUMP AT BEGINING OF 4 PSA STAGE. MADE GEL CHANGE TO 27# VISTAR AT BEGINING OF 4 PSA STAGE. TREATMENT WENT WELL. AVG VISC 26 CPS AVG TEMP 72.1F AVG PH 10.25. POST JOB 5 MINUTE OF 3194 PSI.		