

# **LEGEND:**

 **PROPOSED LOCATION**



**UELS, LLC**  
Corporate Office \* 85 South 200 East  
Vernal, UT 84078 \* (435) 789-1017

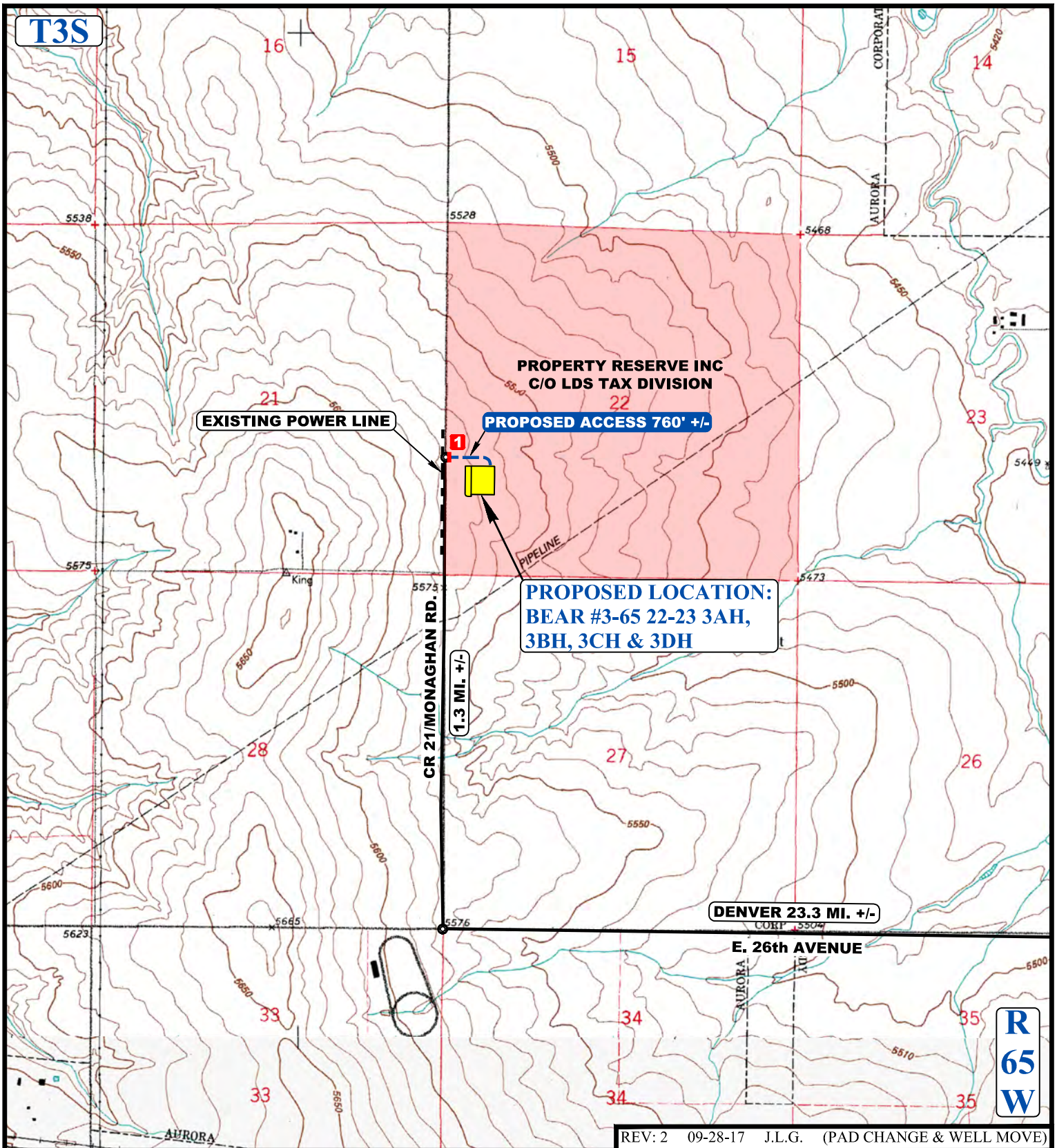


## **ConocoPhillips Company**

**BEAR #3-65 22-23 3AH, 3BH, 3CH & 3DH**  
**NW 1/4 SW 1/4, SECTION 22, T3S, R65W, 6th P.M.**  
**ADAMS COUNTY, COLORADO**

SURVEYED BY	C.M.	09-21-17	SCALE
DRAWN BY	T.L.	09-20-16	1 : 100,000
<b>ACCESS ROAD MAP</b>			<b>TOPO A</b>





NOTE: PARCEL DATA SHOWN HAS BEEN OBTAINED FROM VARIOUS SOURCES AND SHOULD BE USED FOR MAPPING, GRAPHIC AND PLANNING PURPOSES ONLY. NO WARRANTY IS MADE BY UINTAH ENGINEERING AND LAND SURVEYING (UELS) FOR ACCURACY OF THE PARCEL DATA.

#### LEGEND:

- EXISTING ROAD
- PROPOSED ROAD
- EXISTING POWER LINE
- 1 INSTALL 18" CULVERT



**UELS, LLC**  
Corporate Office \* 85 South 200 East  
Vernal, UT 84078 \* (435) 789-1017



#### ConocoPhillips Company

**BEAR #3-65 22-23 3AH, 3BH, 3CH & 3DH**  
**NW 1/4 SW 1/4, SECTION 22, T3S, R65W, 6th P.M.**  
**ADAMS COUNTY, COLORADO**

SURVEYED BY	C.M.	09-21-17	SCALE
DRAWN BY	T.I.	09-20-16	1 : 24,000
<b>ACCESS ROAD MAP</b>			<b>TOPO B</b>