

REV: 1 08-14-17 J.L.G. (PAD MOVE)

LEGEND:

 PROPOSED LOCATION



**BONANZA CREEK ENERGY
OPERATING COMPANY, LLC**

LONGHORN 14-11 PAD
SW 1/4 SW 1/4, SECTION 11, T3N, R63W, 6th P.M.
WELD COUNTY, COLORADO

SURVEYED BY	G.W., C.T.	05-17-17	SCALE
DRAWN BY	J.L.G.	05-31-17	1 : 100,000
ACCESS ROAD MAP			TOPO A

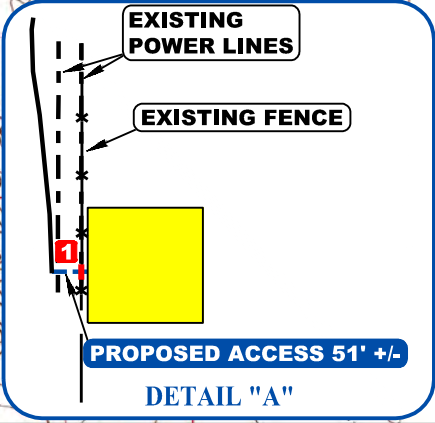
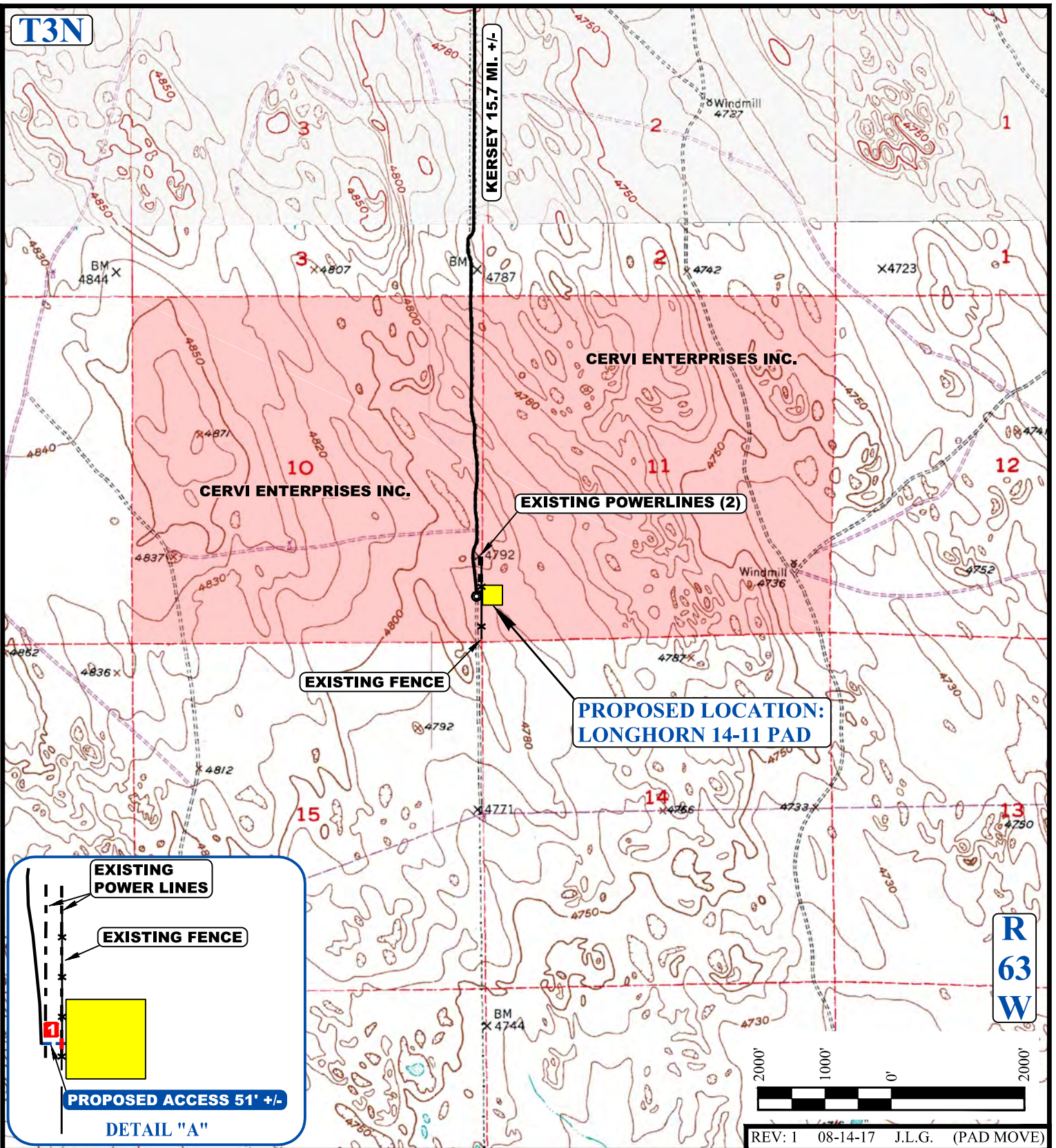


UELS, LLC
Corporate Office * 85 South 200 East
Vernal, UT 84078 * (435) 789-1017

T3N

KERSEY 15.7 MI. +/-

R 63 W



REV: 1 08-14-17 J.L.G. (PAD MOVE)

NOTE: PARCEL DATA SHOWN HAS BEEN OBTAINED FROM VARIOUS SOURCES AND SHOULD BE USED FOR MAPPING, GRAPHIC AND PLANNING PURPOSES ONLY. NO WARRANTY IS MADE BY UINTAH ENGINEERING AND LAND SURVEYING (UELS) FOR ACCURACY OF THE PARCEL DATA.

LEGEND:

- EXISTING ROAD
- PROPOSED ROAD
- EXISTING POWER LINE
- EXISTING FENCE
- 1 INSTALL CATTLE GUARD



**BONANZA CREEK ENERGY
OPERATING COMPANY, LLC**

LONGHORN 14-11 PAD
SW 1/4 SW 1/4, SECTION 11, T3N, R63W, 6th P.M.
WELD COUNTY, COLORADO

SURVEYED BY	G.W., C.T.	05-17-17	SCALE
DRAWN BY	J.L.G.	05-31-17	1 : 24,000
ACCESS ROAD MAP			TOPO B



UELS, LLC
Corporate Office * 85 South 200 East
Vernal, UT 84078 * (435) 789-1017