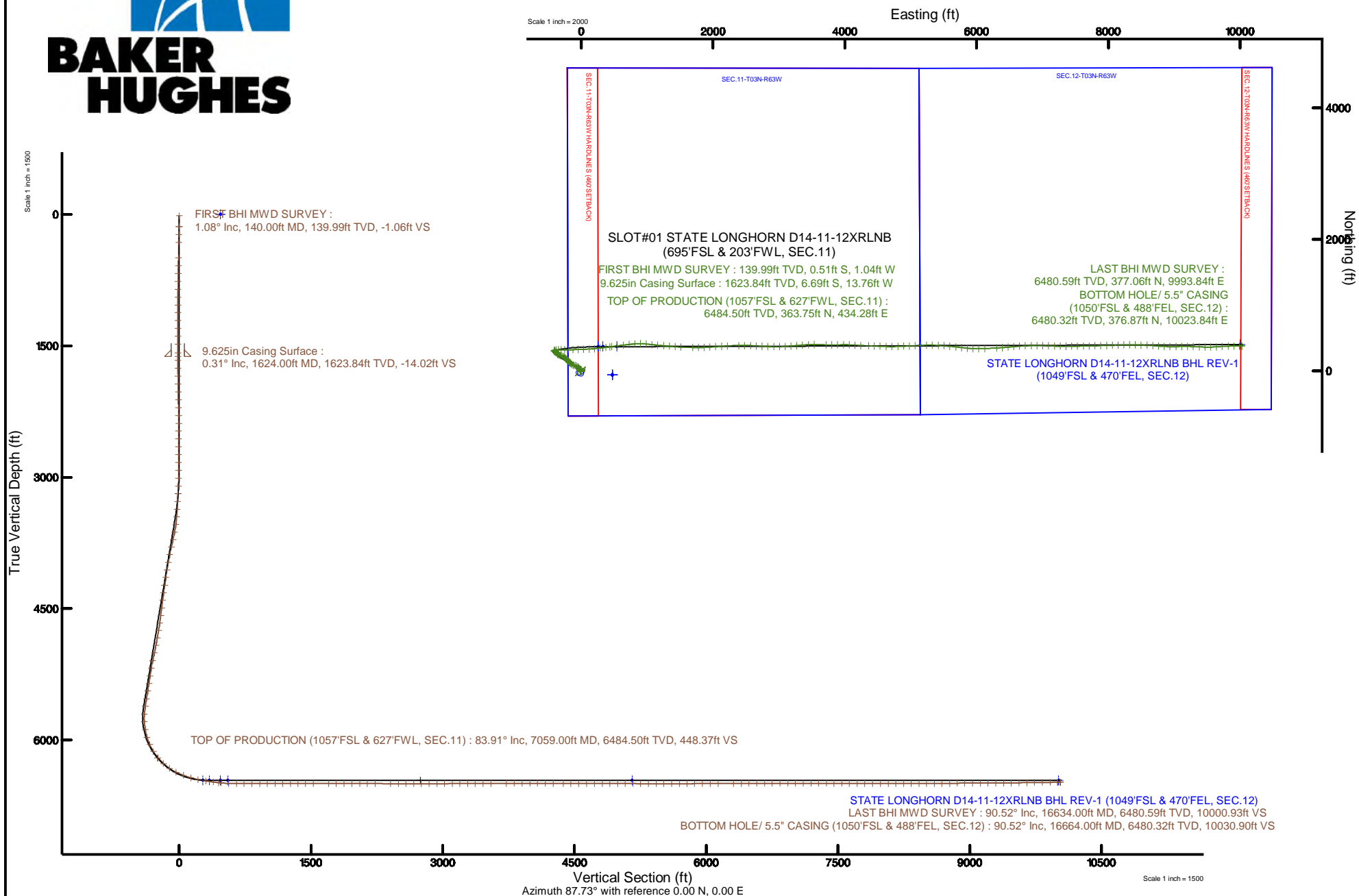


|           |                  |           |   |
|-----------|------------------|-----------|---|
| Location: | COLORADO         | Slot:     | SLOT#01 STATE LONGHORN D14-11-12XRLNB (695'FSL & 203'FWL, SEC.11) |
| Field:    | WELD COUNTY      | Well:     | STATE LONGHORN D14-11-12XRLNB                                     |
| Facility: | SEC.11-T03N-R63W | Wellbore: | STATE LONGHORN D14-11-12XRLNB PWB                                 |

|   |   |
|---|---|
| Plot reference wellpath is STATE LONGHORN D14-11-12XRLNB PWP (REV-C.0)  | Grid System: NAD83 / Lambert Colorado SP, North Zone (501), US feet |
| True vertical depths are referenced to XTREME 19 (17KB + 4782'GL) (RKB)   | * = Wellpath was transformed from a different geoidic datum         |
| Measured depths are referenced to XTREME 19 (17KB + 4782'GL) (RKB)  | North Reference: True north   |
| XTREME 19 (17KB + 4782'GL) (RKB) to Mean Sea Level: 4799 feet   | Scale: True distance  |
| Mean Sea Level to Mud line (At Slot: SLOTR01 STATE LONGHORN D14-11-12XRLNB (695FSL & 203F'WL, SEC. 11)): 0 feet | Depths are in feet  |
| Coordinates are in feet referenced to Slot  | Created by: ingrnjamr on 2017-10-25                                 |
|   | Database: Denver  |





# Actual Wellpath Report

## STATE LONGHORN D14-11-12XRLNB AWP

Page 1 of 10



### REFERENCE WELLPATH IDENTIFICATION

|          |                           |          |   |
|----------|---------------------------|----------|---|
| Operator | BONANZA CREEK OIL COMPANY | Slot     | SLOT#01 STATE LONGHORN D14-11-12XRLNB (695'FSL & 203'FWL, SEC.11) |
| Area     | COLORADO                  | Well     | STATE LONGHORN D14-11-12XRLNB                                     |
| Field    | WELD COUNTY               | Wellbore | STATE LONGHORN D14-11-12XRLNB AWP                                 |
| Facility | SEC.11-T03N-R63W          |          |   |

### REPORT SETUP INFORMATION

|                     |   |                      |  |
|---------------------|---|----------------------|--|
| Projection System   | NAD83 / Lambert Colorado SP, Northern Zone (501), US feet | Software System      | WellArchitect® 5.0                           |
| North Reference     | True  | User                 | Ingmjmr                                      |
| Scale               | 0.999957  | Report Generated     | 10/25/2017 at 10:50:06 AM                    |
| Convergence at slot | 0.71° East  | Database/Source file | Denver/STATE_LONGHORN_D14-11-12XRLNB_AWP.xml |

### WELLPATH LOCATION

|                       | Local coordinates |          | Grid coordinates |                 | Geographic coordinates |                 |
|-----------------------|-------------------|----------|------------------|-----------------|------------------------|-----------------|
|                       | North[ft]         | East[ft] | Easting[US ft]   | Northing[US ft] | Latitude               | Longitude       |
| Slot Location         | 61.09             | -471.94  | 3303218.33       | 1330182.21      | 40°14'04.744"N         | 104°24'50.065"W |
| Facility Reference Pt |                   |          | 3303690.97       | 1330126.92      | 40°14'04.140"N         | 104°24'43.980"W |
| Field Reference Pt    |                   |          | 3224525.77       | 1254425.87      | 40°01'44.400"N         | 104°41'53.556"W |

### WELLPATH DATUM

|                          |                                   |   |                   |
|--------------------------|-----------------------------------|---|-------------------|
| Calculation method       | Minimum curvature                 | XTREME 19 (17'KB + 4782'GL) (RKB) to Facility Vertical Datum  | 4799.00ft         |
| Horizontal Reference Pt  | Slot                              | XTREME 19 (17'KB + 4782'GL) (RKB) to Mean Sea Level   | 4799.00ft         |
| Vertical Reference Pt    | XTREME 19 (17'KB + 4782'GL) (RKB) | XTREME 19 (17'KB + 4782'GL) (RKB) to Mud Line at Slot (SLOT#01 STATE LONGHORN D14-11-12XRLNB (695'FSL & 203'FWL, SEC.11)) | 4799.00ft         |
| MD Reference Pt          | XTREME 19 (17'KB + 4782'GL) (RKB) | Section Origin  | N 0.00, E 0.00 ft |
| Field Vertical Reference | Mean Sea Level                    | Section Azimuth   | 87.73°            |



# Actual Wellpath Report

## STATE LONGHORN D14-11-12XRLNB AWP

Page 2 of 10



| REFERENCE WELLPATH IDENTIFICATION |                           |          |   |
|-----------------------------------|---------------------------|----------|---|
| Operator                          | BONANZA CREEK OIL COMPANY | Slot     | SLOT#01 STATE LONGHORN D14-11-12XRLNB (695'FSL & 203'FWL, SEC.11) |
| Area                              | COLORADO                  | Well     | STATE LONGHORN D14-11-12XRLNB                                     |
| Field                             | WELD COUNTY               | Wellbore | STATE LONGHORN D14-11-12XRLNB AWP                                 |
| Facility                          | SEC.11-T03N-R63W          |          |   |

### WELLPATH DATA (186 stations) † = interpolated/extrapolated station

| MD<br>[ft] | Inclination<br>[°] | Azimuth<br>[°] | TVD<br>[ft] | Vert Sect<br>[ft] | North<br>[ft] | East<br>[ft] | Latitude       | Longitude       | DLS<br>[°/100ft] | Comments             |
|------------|--------------------|----------------|-------------|-------------------|---------------|--------------|----------------|-----------------|------------------|----------------------|
| 0.00†      | 0.000              | 244.130        | 0.00        | 0.00              | 0.00          | 0.00         | 40°14'04.744"N | 104°24'50.065"W | 0.00             |                      |
| 17.00      | 0.000              | 244.130        | 17.00       | 0.00              | 0.00          | 0.00         | 40°14'04.744"N | 104°24'50.065"W | 0.00             |                      |
| 140.00     | 1.080              | 244.130        | 139.99      | -1.06             | -0.51         | -1.04        | 40°14'04.739"N | 104°24'50.079"W | 0.88             | FIRST BHI MWD SURVEY |
| 230.00     | 1.310              | 250.970        | 229.97      | -2.82             | -1.21         | -2.78        | 40°14'04.732"N | 104°24'50.101"W | 0.30             |                      |
| 319.00     | 1.320              | 249.130        | 318.95      | -4.77             | -1.91         | -4.70        | 40°14'04.725"N | 104°24'50.126"W | 0.05             |                      |
| 498.00     | 1.160              | 238.880        | 497.91      | -8.31             | -3.58         | -8.18        | 40°14'04.708"N | 104°24'50.171"W | 0.15             |                      |
| 588.00     | 1.040              | 228.360        | 587.89      | -9.74             | -4.59         | -9.57        | 40°14'04.698"N | 104°24'50.189"W | 0.26             |                      |
| 677.00     | 1.050              | 235.860        | 676.88      | -11.06            | -5.59         | -10.84       | 40°14'04.688"N | 104°24'50.205"W | 0.15             |                      |
| 767.00     | 1.090              | 235.780        | 766.86      | -12.48            | -6.53         | -12.24       | 40°14'04.679"N | 104°24'50.223"W | 0.04             |                      |
| 855.00     | 0.870              | 230.970        | 854.85      | -13.73            | -7.42         | -13.45       | 40°14'04.670"N | 104°24'50.239"W | 0.27             |                      |
| 945.00     | 0.420              | 191.350        | 944.84      | -14.36            | -8.18         | -14.04       | 40°14'04.663"N | 104°24'50.246"W | 0.68             |                      |
| 1035.00    | 0.090              | 165.470        | 1034.84     | -14.42            | -8.57         | -14.09       | 40°14'04.659"N | 104°24'50.247"W | 0.38             |                      |
| 1124.00    | 0.130              | 229.570        | 1123.84     | -14.48            | -8.70         | -14.15       | 40°14'04.658"N | 104°24'50.248"W | 0.14             |                      |
| 1214.00    | 0.460              | 41.470         | 1213.84     | -14.31            | -8.50         | -13.99       | 40°14'04.660"N | 104°24'50.246"W | 0.65             |                      |
| 1303.00    | 0.310              | 19.750         | 1302.84     | -13.98            | -8.00         | -13.67       | 40°14'04.665"N | 104°24'50.241"W | 0.23             |                      |
| 1393.00    | 0.310              | 337.500        | 1392.84     | -13.97            | -7.55         | -13.68       | 40°14'04.669"N | 104°24'50.242"W | 0.25             |                      |
| 1482.00    | 0.130              | 8.300          | 1481.84     | -14.03            | -7.23         | -13.76       | 40°14'04.672"N | 104°24'50.243"W | 0.24             |                      |
| 1580.00    | 0.250              | 356.890        | 1579.84     | -14.02            | -6.90         | -13.75       | 40°14'04.675"N | 104°24'50.243"W | 0.13             |                      |
| 1668.00    | 0.370              | 357.440        | 1667.83     | -14.02            | -6.43         | -13.78       | 40°14'04.680"N | 104°24'50.243"W | 0.14             |                      |
| 1758.00    | 0.860              | 185.680        | 1757.83     | -14.12            | -6.81         | -13.86       | 40°14'04.676"N | 104°24'50.244"W | 1.36             |                      |
| 1848.00    | 0.960              | 123.010        | 1847.82     | -13.59            | -7.89         | -13.29       | 40°14'04.666"N | 104°24'50.237"W | 1.06             |                      |
| 1937.00    | 1.260              | 83.870         | 1936.81     | -12.01            | -8.19         | -11.69       | 40°14'04.663"N | 104°24'50.216"W | 0.89             |                      |
| 2027.00    | 0.920              | 90.160         | 2026.79     | -10.30            | -8.09         | -9.99        | 40°14'04.664"N | 104°24'50.194"W | 0.40             |                      |
| 2116.00    | 1.000              | 154.980        | 2115.78     | -9.28             | -8.80         | -8.94        | 40°14'04.657"N | 104°24'50.181"W | 1.16             |                      |
| 2206.00    | 1.500              | 95.580         | 2205.76     | -7.81             | -9.62         | -7.44        | 40°14'04.649"N | 104°24'50.161"W | 1.46             |                      |
| 2295.00    | 1.720              | 23.930         | 2294.74     | -6.07             | -8.51         | -5.74        | 40°14'04.659"N | 104°24'50.139"W | 2.13             |                      |
| 2385.00    | 2.370              | 349.700        | 2384.68     | -5.73             | -5.45         | -5.52        | 40°14'04.690"N | 104°24'50.136"W | 1.50             |                      |
| 2474.00    | 2.050              | 294.920        | 2473.62     | -7.41             | -2.97         | -7.29        | 40°14'04.714"N | 104°24'50.159"W | 2.31             |                      |
| 2564.00    | 0.770              | 105.640        | 2563.61     | -8.26             | -2.45         | -8.17        | 40°14'04.719"N | 104°24'50.171"W | 3.13             |                      |
| 2653.00    | 1.000              | 206.130        | 2652.60     | -8.06             | -3.31         | -7.94        | 40°14'04.711"N | 104°24'50.168"W | 1.54             |                      |



# Actual Wellpath Report

## STATE LONGHORN D14-11-12XRLNB AWP

Page 3 of 10



| REFERENCE WELLPATH IDENTIFICATION |                           |          |   |
|-----------------------------------|---------------------------|----------|---|
| Operator                          | BONANZA CREEK OIL COMPANY | Slot     | SLOT#01 STATE LONGHORN D14-11-12XRLNB (695'FSL & 203'FWL, SEC.11) |
| Area                              | COLORADO                  | Well     | STATE LONGHORN D14-11-12XRLNB                                     |
| Field                             | WELD COUNTY               | Wellbore | STATE LONGHORN D14-11-12XRLNB AWP                                 |
| Facility                          | SEC.11-T03N-R63W          |          |   |

### WELLPATH DATA (186 stations)

| MD<br>[ft] | Inclination<br>[°] | Azimuth<br>[°] | TVD<br>[ft] | Vert Sect<br>[ft] | North<br>[ft] | East<br>[ft] | Latitude       | Longitude       | DLS<br>[°/100ft] | Comments |
|------------|--------------------|----------------|-------------|-------------------|---------------|--------------|----------------|-----------------|------------------|----------|
| 2743.00    | 1.020              | 95.160         | 2742.59     | -7.64             | -4.09         | -7.49        | 40°14'04.703"N | 104°24'50.162"W | 1.85             |          |
| 2832.00    | 0.560              | 181.040        | 2831.59     | -6.88             | -4.59         | -6.71        | 40°14'04.698"N | 104°24'50.152"W | 1.27             |          |
| 2922.00    | 0.900              | 96.130         | 2921.58     | -6.21             | -5.11         | -6.01        | 40°14'04.693"N | 104°24'50.143"W | 1.13             |          |
| 3011.00    | 2.610              | 317.680        | 3010.56     | -6.82             | -3.68         | -6.68        | 40°14'04.707"N | 104°24'50.151"W | 3.75             |          |
| 3101.00    | 4.110              | 320.570        | 3100.40     | -10.09            | 0.32          | -10.11       | 40°14'04.747"N | 104°24'50.196"W | 1.68             |          |
| 3190.00    | 4.870              | 323.570        | 3189.13     | -14.14            | 5.83          | -14.38       | 40°14'04.801"N | 104°24'50.251"W | 0.89             |          |
| 3280.00    | 5.560              | 325.610        | 3278.75     | -18.60            | 12.50         | -19.11       | 40°14'04.867"N | 104°24'50.312"W | 0.79             |          |
| 3368.00    | 7.430              | 331.960        | 3366.19     | -23.34            | 21.04         | -24.19       | 40°14'04.951"N | 104°24'50.377"W | 2.27             |          |
| 3457.00    | 11.780             | 335.300        | 3453.92     | -29.31            | 34.38         | -30.70       | 40°14'05.083"N | 104°24'50.461"W | 4.93             |          |
| 3544.00    | 13.230             | 324.340        | 3538.86     | -38.18            | 50.54         | -40.21       | 40°14'05.243"N | 104°24'50.584"W | 3.19             |          |
| 3633.00    | 14.110             | 307.060        | 3625.38     | -52.18            | 65.36         | -54.81       | 40°14'05.389"N | 104°24'50.772"W | 4.68             |          |
| 3722.00    | 14.390             | 292.630        | 3711.67     | -70.61            | 76.15         | -73.68       | 40°14'05.496"N | 104°24'51.015"W | 3.99             |          |
| 3809.00    | 12.830             | 278.750        | 3796.24     | -89.90            | 81.78         | -93.22       | 40°14'05.552"N | 104°24'51.267"W | 4.15             |          |
| 3897.00    | 11.060             | 274.510        | 3882.34     | -107.87           | 83.93         | -111.29      | 40°14'05.573"N | 104°24'51.500"W | 2.24             |          |
| 3987.00    | 10.910             | 291.040        | 3970.71     | -124.27           | 87.67         | -127.85      | 40°14'05.610"N | 104°24'51.714"W | 3.49             |          |
| 4076.00    | 11.630             | 304.250        | 4058.01     | -139.22           | 95.75         | -143.13      | 40°14'05.690"N | 104°24'51.911"W | 3.00             |          |
| 4165.00    | 11.530             | 311.150        | 4145.20     | -152.89           | 106.65        | -157.24      | 40°14'05.797"N | 104°24'52.093"W | 1.56             |          |
| 4254.00    | 11.660             | 311.690        | 4232.38     | -165.82           | 118.48        | -170.66      | 40°14'05.914"N | 104°24'52.266"W | 0.19             |          |
| 4341.00    | 11.340             | 317.290        | 4317.64     | -177.70           | 130.62        | -183.02      | 40°14'06.034"N | 104°24'52.425"W | 1.33             |          |
| 4430.00    | 11.950             | 318.620        | 4404.81     | -189.18           | 143.96        | -195.05      | 40°14'06.166"N | 104°24'52.580"W | 0.75             |          |
| 4518.00    | 11.600             | 319.840        | 4490.96     | -200.36           | 157.56        | -206.78      | 40°14'06.301"N | 104°24'52.731"W | 0.49             |          |
| 4607.00    | 11.780             | 326.650        | 4578.11     | -210.55           | 171.98        | -217.54      | 40°14'06.443"N | 104°24'52.870"W | 1.56             |          |
| 4695.00    | 11.970             | 314.370        | 4664.24     | -221.45           | 185.87        | -229.01      | 40°14'06.580"N | 104°24'53.018"W | 2.87             |          |
| 4781.00    | 11.840             | 305.300        | 4748.40     | -234.57           | 197.21        | -242.58      | 40°14'06.692"N | 104°24'53.193"W | 2.18             |          |
| 4868.00    | 12.550             | 305.610        | 4833.44     | -249.10           | 207.87        | -257.55      | 40°14'06.798"N | 104°24'53.386"W | 0.82             |          |
| 4955.00    | 12.710             | 296.270        | 4918.34     | -264.97           | 217.61        | -273.82      | 40°14'06.894"N | 104°24'53.596"W | 2.35             |          |
| 5044.00    | 12.760             | 285.710        | 5005.16     | -282.92           | 224.60        | -292.06      | 40°14'06.963"N | 104°24'53.831"W | 2.61             |          |
| 5133.00    | 12.220             | 283.350        | 5092.06     | -301.34           | 229.44        | -310.69      | 40°14'07.011"N | 104°24'54.071"W | 0.83             |          |
| 5222.00    | 10.740             | 291.690        | 5179.28     | -317.99           | 234.68        | -327.56      | 40°14'07.063"N | 104°24'54.289"W | 2.49             |          |
| 5310.00    | 10.670             | 301.030        | 5265.76     | -332.30           | 241.91        | -342.16      | 40°14'07.134"N | 104°24'54.477"W | 1.97             |          |



# Actual Wellpath Report

## STATE LONGHORN D14-11-12XRLNB AWP

Page 4 of 10



| REFERENCE WELLPATH IDENTIFICATION |                           |          |   |
|-----------------------------------|---------------------------|----------|---|
| Operator                          | BONANZA CREEK OIL COMPANY | Slot     | SLOT#01 STATE LONGHORN D14-11-12XRLNB (695'FSL & 203'FWL, SEC.11) |
| Area                              | COLORADO                  | Well     | STATE LONGHORN D14-11-12XRLNB                                     |
| Field                             | WELD COUNTY               | Wellbore | STATE LONGHORN D14-11-12XRLNB AWB                                 |
| Facility                          | SEC.11-T03N-R63W          |          |   |

| WELLPATH DATA (186 stations) † = interpolated/extrapolated station |                    |                |             |                   |               |              |                |                 |                  |  |
|--|--------------------|----------------|-------------|-------------------|---------------|--------------|----------------|-----------------|------------------|--|
| MD<br>[ft]   | Inclination<br>[°] | Azimuth<br>[°] | TVD<br>[ft] | Vert Sect<br>[ft] | North<br>[ft] | East<br>[ft] | Latitude       | Longitude       | DLS<br>[°/100ft] | Comments                                       |
| 5399.00  | 11.460             | 314.920        | 5353.12     | -345.19           | 252.40        | -355.49      | 40°14'07.238"N | 104°24'54.649"W | 3.12             |  |
| 5488.00  | 12.570             | 313.510        | 5440.17     | -357.95           | 265.32        | -368.77      | 40°14'07.365"N | 104°24'54.820"W | 1.29             |  |
| 5577.00  | 11.610             | 304.610        | 5527.20     | -371.87           | 277.07        | -383.17      | 40°14'07.482"N | 104°24'55.006"W | 2.35             |  |
| 5666.00  | 11.160             | 304.860        | 5614.45     | -385.90           | 287.08        | -397.61      | 40°14'07.580"N | 104°24'55.192"W | 0.51             |  |
| 5756.00  | 8.960              | 325.320        | 5703.09     | -396.61           | 297.83        | -408.75      | 40°14'07.687"N | 104°24'55.336"W | 4.63             |  |
| 5844.00  | 5.900              | 36.560         | 5790.50     | -397.44           | 307.11        | -409.95      | 40°14'07.778"N | 104°24'55.351"W | 10.22            |  |
| 5933.00  | 9.760              | 74.460         | 5878.70     | -387.22           | 312.82        | -399.95      | 40°14'07.835"N | 104°24'55.222"W | 7.02             |  |
| 6023.00  | 16.700             | 79.040         | 5966.26     | -366.99           | 317.32        | -379.88      | 40°14'07.879"N | 104°24'54.963"W | 7.79             |  |
| 6113.00  | 24.630             | 87.560         | 6050.42     | -335.40           | 320.59        | -348.39      | 40°14'07.912"N | 104°24'54.557"W | 9.40             |  |
| 6202.00  | 31.070             | 91.880         | 6129.08     | -293.90           | 320.62        | -306.86      | 40°14'07.912"N | 104°24'54.022"W | 7.58             |  |
| 6292.00  | 40.100             | 89.720         | 6202.20     | -241.66           | 320.00        | -254.55      | 40°14'07.906"N | 104°24'53.347"W | 10.13            |  |
| 6381.00  | 46.900             | 90.090         | 6266.72     | -180.47           | 320.09        | -193.33      | 40°14'07.907"N | 104°24'52.558"W | 7.65             |  |
| 6470.00  | 56.500             | 86.530         | 6321.83     | -110.73           | 322.29        | -123.62      | 40°14'07.928"N | 104°24'51.659"W | 11.23            |  |
| 6559.00  | 63.110             | 88.170         | 6366.57     | -33.86            | 325.81        | -46.82       | 40°14'07.963"N | 104°24'50.669"W | 7.60             |  |
| 6648.00  | 69.450             | 89.080         | 6402.35     | 47.57             | 327.75        | 34.60        | 40°14'07.982"N | 104°24'49.619"W | 7.18             |  |
| 6737.00  | 74.540             | 87.600         | 6429.86     | 132.18            | 330.21        | 119.17       | 40°14'08.007"N | 104°24'48.529"W | 5.93             |  |
| 6823.00  | 79.030             | 83.740         | 6449.52     | 215.81            | 336.56        | 202.61       | 40°14'08.069"N | 104°24'47.453"W | 6.81             |  |
| 6911.00  | 79.850             | 82.380         | 6465.65     | 302.03            | 347.01        | 288.49       | 40°14'08.173"N | 104°24'46.345"W | 1.78             |  |
| 7000.00  | 83.890             | 84.150         | 6478.23     | 389.85            | 357.33        | 375.96       | 40°14'08.275"N | 104°24'45.218"W | 4.95             |  |
| 7059.00†   | 83.910             | 83.302         | 6484.50     | 448.37            | 363.75        | 434.28       | 40°14'08.338"N | 104°24'44.466"W | 1.43             | TOP OF PRODUCTION (1057'FSL & 627'FWL, SEC.11) |
| 7087.00  | 83.920             | 82.900         | 6487.47     | 476.12            | 367.09        | 461.92       | 40°14'08.371"N | 104°24'44.109"W | 1.43             |  |
| 7176.00  | 88.030             | 82.000         | 6493.71     | 564.50            | 378.75        | 549.91       | 40°14'08.486"N | 104°24'42.975"W | 4.73             |  |
| 7264.00  | 90.280             | 82.810         | 6495.01     | 652.11            | 390.38        | 637.12       | 40°14'08.601"N | 104°24'41.850"W | 2.72             |  |
| 7352.00  | 90.310             | 83.340         | 6494.56     | 739.82            | 400.99        | 724.48       | 40°14'08.706"N | 104°24'40.724"W | 0.60             |  |
| 7442.00  | 90.180             | 85.480         | 6494.17     | 829.66            | 409.76        | 814.04       | 40°14'08.793"N | 104°24'39.569"W | 2.38             |  |
| 7529.00  | 89.410             | 90.460         | 6494.49     | 916.63            | 412.84        | 900.96       | 40°14'08.823"N | 104°24'38.448"W | 5.79             |  |
| 7617.00  | 89.690             | 96.020         | 6495.18     | 1004.19           | 407.87        | 988.78       | 40°14'08.774"N | 104°24'37.316"W | 6.33             |  |
| 7704.00  | 89.910             | 97.100         | 6495.48     | 1090.15           | 397.93        | 1075.21      | 40°14'08.676"N | 104°24'36.201"W | 1.27             |  |
| 7790.00  | 90.030             | 94.830         | 6495.53     | 1175.26           | 388.99        | 1160.74      | 40°14'08.587"N | 104°24'35.099"W | 2.64             |  |
| 7880.00  | 90.030             | 94.510         | 6495.48     | 1264.60           | 381.67        | 1250.44      | 40°14'08.515"N | 104°24'33.942"W | 0.36             |  |



# Actual Wellpath Report

STATE LONGHORN D14-11-12XRLNB AWP

Page 5 of 10



| REFERENCE WELLPATH IDENTIFICATION |                           |          |   |
|-----------------------------------|---------------------------|----------|---|
| Operator                          | BONANZA CREEK OIL COMPANY | Slot     | SLOT#01 STATE LONGHORN D14-11-12XRLNB (695'FSL & 203'FWL, SEC.11) |
| Area                              | COLORADO                  | Well     | STATE LONGHORN D14-11-12XRLNB                                     |
| Field                             | WELD COUNTY               | Wellbore | STATE LONGHORN D14-11-12XRLNB AWP                                 |
| Facility                          | SEC.11-T03N-R63W          |          |   |

## WELLPATH DATA (186 stations)

| MD<br>[ft] | Inclination<br>[°] | Azimuth<br>[°] | TVD<br>[ft] | Vert Sect<br>[ft] | North<br>[ft] | East<br>[ft] | Latitude       | Longitude       | DLS<br>[°/100ft] | Comments |
|------------|--------------------|----------------|-------------|-------------------|---------------|--------------|----------------|-----------------|------------------|----------|
| 7969.00    | 90.000             | 95.220         | 6495.46     | 1352.91           | 374.12        | 1339.12      | 40°14'08.440"N | 104°24'32.799"W | 0.80             |          |
| 8056.00    | 89.910             | 94.400         | 6495.52     | 1439.24           | 366.82        | 1425.81      | 40°14'08.368"N | 104°24'31.681"W | 0.95             |          |
| 8144.00    | 90.060             | 92.930         | 6495.55     | 1526.77           | 361.20        | 1513.63      | 40°14'08.312"N | 104°24'30.548"W | 1.68             |          |
| 8319.00    | 89.970             | 90.510         | 6495.50     | 1701.33           | 355.94        | 1688.54      | 40°14'08.260"N | 104°24'28.293"W | 1.38             |          |
| 8406.00    | 90.180             | 90.660         | 6495.39     | 1788.22           | 355.06        | 1775.53      | 40°14'08.252"N | 104°24'27.171"W | 0.30             |          |
| 8494.00    | 89.970             | 87.720         | 6495.27     | 1876.18           | 356.30        | 1863.51      | 40°14'08.264"N | 104°24'26.037"W | 3.35             |          |
| 8583.00    | 90.000             | 86.280         | 6495.30     | 1965.17           | 360.96        | 1952.39      | 40°14'08.310"N | 104°24'24.891"W | 1.62             |          |
| 8672.00    | 90.180             | 86.330         | 6495.16     | 2054.15           | 366.69        | 2041.20      | 40°14'08.366"N | 104°24'23.746"W | 0.21             |          |
| 8761.00    | 89.910             | 85.940         | 6495.09     | 2143.11           | 372.69        | 2130.00      | 40°14'08.426"N | 104°24'22.601"W | 0.53             |          |
| 8850.00    | 89.420             | 86.300         | 6495.61     | 2232.08           | 378.72        | 2218.80      | 40°14'08.485"N | 104°24'21.456"W | 0.68             |          |
| 9024.00    | 89.850             | 89.300         | 6496.71     | 2406.05           | 385.39        | 2392.64      | 40°14'08.551"N | 104°24'19.214"W | 1.74             |          |
| 9112.00    | 90.030             | 90.690         | 6496.81     | 2493.98           | 385.40        | 2480.64      | 40°14'08.551"N | 104°24'18.080"W | 1.59             |          |
| 9199.00    | 89.290             | 92.340         | 6497.32     | 2580.79           | 383.10        | 2567.61      | 40°14'08.528"N | 104°24'16.958"W | 2.08             |          |
| 9289.00    | 90.090             | 93.890         | 6497.81     | 2670.38           | 378.21        | 2657.47      | 40°14'08.480"N | 104°24'15.800"W | 1.94             |          |
| 9376.00    | 90.090             | 92.850         | 6497.67     | 2756.96           | 373.10        | 2744.32      | 40°14'08.429"N | 104°24'14.680"W | 1.20             |          |
| 9465.00    | 89.970             | 91.490         | 6497.63     | 2845.69           | 369.73        | 2833.25      | 40°14'08.396"N | 104°24'13.533"W | 1.53             |          |
| 9553.00    | 90.490             | 90.880         | 6497.27     | 2933.53           | 367.91        | 2921.23      | 40°14'08.378"N | 104°24'12.399"W | 0.91             |          |
| 9641.00    | 90.490             | 88.880         | 6496.52     | 3021.46           | 368.09        | 3009.22      | 40°14'08.379"N | 104°24'11.264"W | 2.27             |          |
| 9727.00    | 90.000             | 86.240         | 6496.15     | 3107.45           | 371.75        | 3095.14      | 40°14'08.415"N | 104°24'10.156"W | 3.12             |          |
| 9815.00    | 91.260             | 87.380         | 6495.19     | 3195.43           | 376.65        | 3182.99      | 40°14'08.464"N | 104°24'09.023"W | 1.93             |          |
| 9902.00    | 90.060             | 83.360         | 6494.18     | 3282.33           | 383.67        | 3269.68      | 40°14'08.533"N | 104°24'07.906"W | 4.82             |          |
| 9990.00    | 90.060             | 85.780         | 6494.09     | 3370.19           | 392.00        | 3357.28      | 40°14'08.615"N | 104°24'06.776"W | 2.75             |          |
| 10079.00   | 90.120             | 87.480         | 6493.95     | 3459.17           | 397.23        | 3446.12      | 40°14'08.667"N | 104°24'05.631"W | 1.91             |          |
| 10168.00   | 90.030             | 89.910         | 6493.83     | 3548.15           | 399.26        | 3535.09      | 40°14'08.687"N | 104°24'04.483"W | 2.73             |          |
| 10346.00   | 90.180             | 92.720         | 6493.51     | 3725.78           | 395.17        | 3713.03      | 40°14'08.646"N | 104°24'02.189"W | 1.58             |          |
| 10434.00   | 90.990             | 90.850         | 6492.61     | 3813.55           | 392.43        | 3800.98      | 40°14'08.619"N | 104°24'01.055"W | 2.32             |          |
| 10523.00   | 90.000             | 87.460         | 6491.84     | 3902.51           | 393.74        | 3889.95      | 40°14'08.632"N | 104°23'59.908"W | 3.97             |          |
| 10612.00   | 89.750             | 89.010         | 6492.03     | 3991.50           | 396.48        | 3978.90      | 40°14'08.658"N | 104°23'58.761"W | 1.76             |          |
| 10700.00   | 89.570             | 92.410         | 6492.56     | 4079.37           | 395.39        | 4066.88      | 40°14'08.648"N | 104°23'57.626"W | 3.87             |          |
| 10789.00   | 89.690             | 94.100         | 6493.13     | 4167.95           | 390.34        | 4155.73      | 40°14'08.597"N | 104°23'56.481"W | 1.90             |          |





# Actual Wellpath Report

## STATE LONGHORN D14-11-12XRLNB AWP

Page 6 of 10



| REFERENCE WELLPATH IDENTIFICATION |                           |          |   |
|-----------------------------------|---------------------------|----------|---|
| Operator                          | BONANZA CREEK OIL COMPANY | Slot     | SLOT#01 STATE LONGHORN D14-11-12XRLNB (695'FSL & 203'FWL, SEC.11) |
| Area                              | COLORADO                  | Well     | STATE LONGHORN D14-11-12XRLNB                                     |
| Field                             | WELD COUNTY               | Wellbore | STATE LONGHORN D14-11-12XRLNB AWP                                 |
| Facility                          | SEC.11-T03N-R63W          |          |   |

### WELLPATH DATA (186 stations)

| MD<br>[ft] | Inclination<br>[°] | Azimuth<br>[°] | TVD<br>[ft] | Vert Sect<br>[ft] | North<br>[ft] | East<br>[ft] | Latitude       | Longitude       | DLS<br>[°/100ft] | Comments |
|------------|--------------------|----------------|-------------|-------------------|---------------|--------------|----------------|-----------------|------------------|----------|
| 10878.00   | 89.970             | 93.140         | 6493.40     | 4256.48           | 384.72        | 4244.55      | 40°14'08.542"N | 104°23'55.336"W | 1.12             |          |
| 10996.00   | 89.940             | 91.210         | 6493.49     | 4374.12           | 380.24        | 4362.46      | 40°14'08.497"N | 104°23'53.815"W | 1.64             |          |
| 11082.00   | 89.290             | 92.020         | 6494.07     | 4459.92           | 377.82        | 4448.43      | 40°14'08.473"N | 104°23'52.707"W | 1.21             |          |
| 11171.00   | 90.060             | 93.080         | 6494.57     | 4548.60           | 373.86        | 4537.34      | 40°14'08.434"N | 104°23'51.560"W | 1.47             |          |
| 11260.00   | 89.880             | 92.090         | 6494.62     | 4637.28           | 369.85        | 4626.24      | 40°14'08.394"N | 104°23'50.414"W | 1.13             |          |
| 11348.00   | 90.030             | 89.730         | 6494.69     | 4725.13           | 368.45        | 4714.23      | 40°14'08.380"N | 104°23'49.280"W | 2.69             |          |
| 11438.00   | 89.850             | 87.540         | 6494.78     | 4815.12           | 370.59        | 4804.20      | 40°14'08.401"N | 104°23'48.120"W | 2.44             |          |
| 11527.00   | 89.910             | 87.720         | 6494.97     | 4904.12           | 374.27        | 4893.12      | 40°14'08.437"N | 104°23'46.973"W | 0.21             |          |
| 11613.00   | 89.910             | 87.590         | 6495.10     | 4990.12           | 377.79        | 4979.05      | 40°14'08.472"N | 104°23'45.865"W | 0.15             |          |
| 11702.00   | 89.660             | 87.380         | 6495.44     | 5079.11           | 381.70        | 5067.96      | 40°14'08.510"N | 104°23'44.719"W | 0.37             |          |
| 11789.00   | 89.600             | 87.130         | 6496.00     | 5166.11           | 385.86        | 5154.86      | 40°14'08.551"N | 104°23'43.598"W | 0.30             |          |
| 11876.00   | 89.630             | 87.690         | 6496.58     | 5253.11           | 389.79        | 5241.77      | 40°14'08.590"N | 104°23'42.477"W | 0.64             |          |
| 11963.00   | 90.030             | 91.730         | 6496.84     | 5340.04           | 390.23        | 5328.75      | 40°14'08.594"N | 104°23'41.356"W | 4.67             |          |
| 12053.00   | 89.850             | 93.160         | 6496.94     | 5429.73           | 386.39        | 5418.66      | 40°14'08.556"N | 104°23'40.197"W | 1.60             |          |
| 12141.00   | 90.250             | 95.040         | 6496.86     | 5517.18           | 380.10        | 5506.43      | 40°14'08.494"N | 104°23'39.065"W | 2.18             |          |
| 12229.00   | 89.970             | 94.740         | 6496.69     | 5604.49           | 372.60        | 5594.11      | 40°14'08.419"N | 104°23'37.934"W | 0.47             |          |
| 12319.00   | 90.030             | 96.890         | 6496.69     | 5693.59           | 363.48        | 5683.64      | 40°14'08.329"N | 104°23'36.780"W | 2.39             |          |
| 12406.00   | 90.150             | 96.770         | 6496.55     | 5779.50           | 353.14        | 5770.03      | 40°14'08.227"N | 104°23'35.666"W | 0.20             |          |
| 12494.00   | 90.370             | 94.670         | 6496.15     | 5866.63           | 344.37        | 5857.58      | 40°14'08.140"N | 104°23'34.537"W | 2.40             |          |
| 12583.00   | 90.180             | 92.100         | 6495.73     | 5955.19           | 339.11        | 5946.42      | 40°14'08.088"N | 104°23'33.392"W | 2.90             |          |
| 12672.00   | 90.520             | 90.250         | 6495.18     | 6044.03           | 337.29        | 6035.40      | 40°14'08.069"N | 104°23'32.244"W | 2.11             |          |
| 12762.00   | 90.000             | 87.820         | 6494.77     | 6133.99           | 338.80        | 6125.37      | 40°14'08.084"N | 104°23'31.084"W | 2.76             |          |
| 12939.00   | 90.340             | 87.010         | 6494.25     | 6310.99           | 346.79        | 6302.19      | 40°14'08.163"N | 104°23'28.804"W | 0.50             |          |
| 13028.00   | 90.490             | 85.190         | 6493.60     | 6399.95           | 352.84        | 6390.98      | 40°14'08.222"N | 104°23'27.660"W | 2.05             |          |
| 13115.00   | 90.310             | 84.900         | 6493.00     | 6486.85           | 360.35        | 6477.65      | 40°14'08.296"N | 104°23'26.542"W | 0.39             |          |
| 13203.00   | 90.250             | 85.720         | 6492.57     | 6574.77           | 367.55        | 6565.36      | 40°14'08.367"N | 104°23'25.411"W | 0.93             |          |
| 13292.00   | 90.180             | 85.480         | 6492.23     | 6663.71           | 374.38        | 6654.09      | 40°14'08.434"N | 104°23'24.267"W | 0.28             |          |
| 13378.00   | 89.970             | 86.520         | 6492.12     | 6749.67           | 380.38        | 6739.88      | 40°14'08.493"N | 104°23'23.161"W | 1.23             |          |
| 13467.00   | 90.060             | 88.260         | 6492.10     | 6838.66           | 384.43        | 6828.79      | 40°14'08.533"N | 104°23'22.014"W | 1.96             |          |
| 13556.00   | 89.820             | 90.350         | 6492.19     | 6927.62           | 385.51        | 6917.77      | 40°14'08.544"N | 104°23'20.867"W | 2.36             |          |



# Actual Wellpath Report

## STATE LONGHORN D14-11-12XRLNB AWP

Page 7 of 10



| REFERENCE WELLPATH IDENTIFICATION |                           |          |   |
|-----------------------------------|---------------------------|----------|---|
| Operator                          | BONANZA CREEK OIL COMPANY | Slot     | SLOT#01 STATE LONGHORN D14-11-12XRLNB (695'FSL & 203'FWL, SEC.11) |
| Area                              | COLORADO                  | Well     | STATE LONGHORN D14-11-12XRLNB                                     |
| Field                             | WELD COUNTY               | Wellbore | STATE LONGHORN D14-11-12XRLNB AWB                                 |
| Facility                          | SEC.11-T03N-R63W          |          |   |

### WELLPATH DATA (186 stations)

| MD<br>[ft] | Inclination<br>[°] | Azimuth<br>[°] | TVD<br>[ft] | Vert Sect<br>[ft] | North<br>[ft] | East<br>[ft] | Latitude       | Longitude       | DLS<br>[°/100ft] | Comments |
|------------|--------------------|----------------|-------------|-------------------|---------------|--------------|----------------|-----------------|------------------|----------|
| 13644.00   | 89.630             | 92.190         | 6492.61     | 7015.45           | 383.56        | 7005.75      | 40°14'08.524"N | 104°23'19.733"W | 2.10             |          |
| 13732.00   | 89.970             | 92.520         | 6492.92     | 7103.16           | 379.94        | 7093.67      | 40°14'08.488"N | 104°23'18.599"W | 0.54             |          |
| 13821.00   | 89.880             | 92.250         | 6493.04     | 7191.87           | 376.24        | 7182.60      | 40°14'08.451"N | 104°23'17.452"W | 0.32             |          |
| 13910.00   | 89.910             | 91.220         | 6493.20     | 7280.65           | 373.54        | 7271.55      | 40°14'08.424"N | 104°23'16.305"W | 1.16             |          |
| 13996.00   | 89.940             | 90.020         | 6493.31     | 7366.54           | 372.61        | 7357.55      | 40°14'08.415"N | 104°23'15.196"W | 1.40             |          |
| 14084.00   | 90.000             | 88.610         | 6493.36     | 7454.50           | 373.66        | 7445.54      | 40°14'08.425"N | 104°23'14.062"W | 1.60             |          |
| 14171.00   | 90.030             | 88.950         | 6493.34     | 7541.49           | 375.52        | 7532.52      | 40°14'08.443"N | 104°23'12.940"W | 0.39             |          |
| 14260.00   | 89.880             | 89.390         | 6493.41     | 7630.46           | 376.81        | 7621.51      | 40°14'08.456"N | 104°23'11.793"W | 0.52             |          |
| 14349.00   | 89.850             | 88.470         | 6493.61     | 7719.44           | 378.47        | 7710.49      | 40°14'08.472"N | 104°23'10.646"W | 1.03             |          |
| 14435.00   | 89.880             | 88.490         | 6493.82     | 7805.43           | 380.75        | 7796.46      | 40°14'08.494"N | 104°23'09.537"W | 0.04             |          |
| 14524.00   | 89.910             | 88.030         | 6493.98     | 7894.43           | 383.45        | 7885.42      | 40°14'08.520"N | 104°23'08.390"W | 0.52             |          |
| 14612.00   | 89.940             | 89.070         | 6494.10     | 7982.42           | 385.68        | 7973.39      | 40°14'08.542"N | 104°23'07.256"W | 1.18             |          |
| 14700.00   | 89.750             | 88.300         | 6494.33     | 8070.40           | 387.70        | 8061.37      | 40°14'08.562"N | 104°23'06.121"W | 0.90             |          |
| 14788.00   | 89.850             | 87.690         | 6494.64     | 8158.40           | 390.78        | 8149.31      | 40°14'08.592"N | 104°23'04.987"W | 0.70             |          |
| 14877.00   | 89.820             | 88.820         | 6494.90     | 8247.39           | 393.49        | 8238.27      | 40°14'08.618"N | 104°23'03.840"W | 1.27             |          |
| 14963.00   | 89.660             | 89.830         | 6495.29     | 8333.36           | 394.50        | 8324.26      | 40°14'08.628"N | 104°23'02.731"W | 1.19             |          |
| 15050.00   | 89.910             | 91.400         | 6495.61     | 8420.24           | 393.57        | 8411.25      | 40°14'08.619"N | 104°23'01.610"W | 1.83             |          |
| 15137.00   | 89.970             | 91.980         | 6495.71     | 8507.04           | 391.00        | 8498.21      | 40°14'08.593"N | 104°23'00.489"W | 0.67             |          |
| 15226.00   | 89.880             | 92.190         | 6495.82     | 8595.78           | 387.76        | 8587.16      | 40°14'08.561"N | 104°22'59.342"W | 0.26             |          |
| 15313.00   | 90.830             | 93.990         | 6495.28     | 8682.39           | 383.07        | 8674.02      | 40°14'08.514"N | 104°22'58.222"W | 2.34             |          |
| 15402.00   | 91.230             | 94.480         | 6493.68     | 8770.80           | 376.50        | 8762.76      | 40°14'08.449"N | 104°22'57.077"W | 0.71             |          |
| 15489.00   | 91.260             | 93.140         | 6491.79     | 8857.29           | 370.72        | 8849.55      | 40°14'08.391"N | 104°22'55.958"W | 1.54             |          |
| 15575.00   | 91.080             | 90.710         | 6490.04     | 8943.04           | 367.83        | 8935.48      | 40°14'08.363"N | 104°22'54.851"W | 2.83             |          |
| 15665.00   | 89.910             | 88.600         | 6489.26     | 9032.97           | 368.38        | 9025.47      | 40°14'08.368"N | 104°22'53.690"W | 2.68             |          |
| 15752.00   | 89.750             | 89.390         | 6489.52     | 9119.95           | 369.90        | 9112.45      | 40°14'08.382"N | 104°22'52.569"W | 0.93             |          |
| 15840.00   | 89.850             | 90.520         | 6489.82     | 9207.88           | 369.97        | 9200.45      | 40°14'08.383"N | 104°22'51.434"W | 1.29             |          |
| 15929.00   | 89.880             | 91.880         | 6490.03     | 9296.72           | 368.11        | 9289.43      | 40°14'08.364"N | 104°22'50.287"W | 1.53             |          |
| 16018.00   | 90.370             | 91.900         | 6489.84     | 9385.48           | 365.17        | 9378.38      | 40°14'08.335"N | 104°22'49.140"W | 0.55             |          |
| 16105.00   | 91.140             | 91.760         | 6488.69     | 9472.25           | 362.39        | 9465.33      | 40°14'08.307"N | 104°22'48.019"W | 0.90             |          |
| 16193.00   | 91.790             | 89.200         | 6486.44     | 9560.11           | 361.66        | 9553.29      | 40°14'08.299"N | 104°22'46.884"W | 3.00             |          |





# Actual Wellpath Report

## STATE LONGHORN D14-11-12XRLNB AWP

Page 8 of 10



| REFERENCE WELLPATH IDENTIFICATION |                           |          |   |
|-----------------------------------|---------------------------|----------|---|
| Operator                          | BONANZA CREEK OIL COMPANY | Slot     | SLOT#01 STATE LONGHORN D14-11-12XRLNB (695'FSL & 203'FWL, SEC.11) |
| Area                              | COLORADO                  | Well     | STATE LONGHORN D14-11-12XRLNB                                     |
| Field                             | WELD COUNTY               | Wellbore | STATE LONGHORN D14-11-12XRLNB AWB                                 |
| Facility                          | SEC.11-T03N-R63W          |          |   |

| WELLPATH DATA (186 stations) |                    |                |             |                   |               |              |                |                 |                  |   |
|------------------------------|--------------------|----------------|-------------|-------------------|---------------|--------------|----------------|-----------------|------------------|---|
| MD<br>[ft]                   | Inclination<br>[°] | Azimuth<br>[°] | TVD<br>[ft] | Vert Sect<br>[ft] | North<br>[ft] | East<br>[ft] | Latitude       | Longitude       | DLS<br>[°/100ft] | Comments  |
| 16282.00                     | 91.170             | 86.810         | 6484.14     | 9649.07           | 364.75        | 9642.20      | 40°14'08.330"N | 104°22'45.738"W | 2.77             |   |
| 16370.00                     | 90.310             | 85.850         | 6483.01     | 9737.04           | 370.39        | 9730.01      | 40°14'08.385"N | 104°22'44.606"W | 1.46             |   |
| 16459.00                     | 90.580             | 88.110         | 6482.32     | 9826.02           | 375.08        | 9818.87      | 40°14'08.431"N | 104°22'43.460"W | 2.56             |   |
| 16547.00                     | 90.580             | 89.480         | 6481.43     | 9914.00           | 376.93        | 9906.85      | 40°14'08.449"N | 104°22'42.326"W | 1.56             |   |
| 16634.00                     | 90.520             | 90.350         | 6480.59     | 10000.93          | 377.06        | 9993.84      | 40°14'08.450"N | 104°22'41.204"W | 1.00             | LAST BHI MWD SURVEY                                   |
| 16664.00                     | 90.520             | 90.350         | 6480.32     | 10030.90          | 376.87        | 10023.84     | 40°14'08.448"N | 104°22'40.817"W | 0.00             | BOTTOM HOLE/ 5.5" CASING (1050'FSL & 488'FEL, SEC.12) |

| HOLE & CASING SECTIONS - Ref Wellbore: STATE LONGHORN D14-11-12XRLNB AWB      Ref Wellpath: STATE LONGHORN D14-11-12XRLNB AWP |                  |                |                  |                   |                 |                   |                   |                 |                 |
|---|------------------|----------------|------------------|-------------------|-----------------|-------------------|-------------------|-----------------|-----------------|
| String/Diameter   | Start MD<br>[ft] | End MD<br>[ft] | Interval<br>[ft] | Start TVD<br>[ft] | End TVD<br>[ft] | Start N/S<br>[ft] | Start E/W<br>[ft] | End N/S<br>[ft] | End E/W<br>[ft] |
| 9.625in Casing Surface  | 17.00            | 1624.00        | 1607.00          | 17.00             | 1623.84         | 0.00              | 0.00              | -6.69           | -13.76          |
| 8.5in Open Hole   | 1624.00          | 16664.00       | 15040.00         | 1623.84           | 6480.32         | -6.69             | -13.76            | 376.87          | 10023.84        |



# Actual Wellpath Report

## STATE LONGHORN D14-11-12XRLNB AWP

Page 9 of 10



| REFERENCE WELLPATH IDENTIFICATION |                           |          |   |
|-----------------------------------|---------------------------|----------|---|
| Operator                          | BONANZA CREEK OIL COMPANY | Slot     | SLOT#01 STATE LONGHORN D14-11-12XRLNB (695'FSL & 203'FWL, SEC.11) |
| Area                              | COLORADO                  | Well     | STATE LONGHORN D14-11-12XRLNB                                     |
| Field                             | WELD COUNTY               | Wellbore | STATE LONGHORN D14-11-12XRLNB AWB                                 |
| Facility                          | SEC.11-T03N-R63W          |          |   |

| TARGETS  |             |               |              |                      |                       |                |                 |         |
|--|-------------|---------------|--------------|----------------------|-----------------------|----------------|-----------------|---------|
| Name   | TVD<br>[ft] | North<br>[ft] | East<br>[ft] | Grid East<br>[US ft] | Grid North<br>[US ft] | Latitude       | Longitude       | Shape   |
| SEC.11-T03N-R63W   | 0.00        | -61.08        | 471.95       | 3303690.97           | 1330126.92            | 40°14'04.140"N | 104°24'43.980"W | polygon |
| SEC.12-T03N-R63W   | 0.00        | -61.08        | 471.95       | 3303690.97           | 1330126.92            | 40°14'04.140"N | 104°24'43.980"W | polygon |
| SEC.12-T03N-R63W HARDLINES<br>(460'SETBACK)                              | 6458.00     | -61.08        | 471.95       | 3303690.97           | 1330126.92            | 40°14'04.140"N | 104°24'43.980"W | polygon |
| STATE LONGHORN D14-11-12XRLNB BHL<br>REV-1 (1049'FSL & 470'FEL, SEC.12)  | 6458.00     | 402.39        | 10003.44     | 3313215.64           | 1330707.06            | 40°14'08.700"N | 104°22'41.080"W | point   |
| STATE LONGHORN D14-11-12XRLNB LP<br>REV-1 (1059'FSL & 531'FWL, SEC.11)   | 6458.00     | 371.02        | 327.69       | 3303541.43           | 1330557.20            | 40°14'08.410"N | 104°24'45.840"W | point   |
| STATE LONGHORN D14-11-12XRLNB LP<br>REV-2 (1056'FSL & 774'FWL, SEC.11)   | 6458.00     | 371.02        | 538.36       | 3303752.08           | 1330559.78            | 40°14'08.410"N | 104°24'43.124"W | point   |
| STATE LONGHORN D14-11-12XRLNB LP<br>REV-3 (1056'FSL & 460'FWL, SEC.11)   | 6458.00     | 371.02        | 256.36       | 3303470.11           | 1330556.33            | 40°14'08.410"N | 104°24'46.760"W | point   |
| STATE LONGHORN D14-11-12XRLNB MID<br>LP REV-1 (1070'FSL & 0'FEL, SEC.11) | 6458.00     | 385.72        | 5143.85      | 3308356.84           | 1330630.88            | 40°14'08.550"N | 104°23'43.740"W | point   |
| SEC.11-T03N-R63W HARDLINES<br>(460'SETBACK)                              | 6460.00     | -61.08        | 471.95       | 3303690.97           | 1330126.92            | 40°14'04.140"N | 104°24'43.980"W | polygon |

| WELLPATH COMPOSITION - Ref Wellbore: STATE LONGHORN D14-11-12XRLNB AWB |                |  |  |  | Ref Wellpath: STATE LONGHORN D14-11-12XRLNB AWP |                                   |
|--|----------------|--|--|--|---|-----------------------------------|
| Start MD<br>[ft]   | End MD<br>[ft] | Positional Uncertainty Model                                   |  | Log Name/Comment                         |   | Wellbore                          |
| 17.00  | 1580.00        | Custom BHI NaviTrak (Standard Rotating) (Rockies 0.03Gt model) |  | BHI NAVITRAK +SR+ ROCKIES <140-1580>     |   | STATE LONGHORN D14-11-12XRLNB AWB |
| 1580.00  | 16634.00       | Custom BHI AutoTrak Curve (Short) (Rockies 0.03Gt model)       |  | BHI AT CURVE +SHORT+ROCKIES <1668-16634> |   | STATE LONGHORN D14-11-12XRLNB AWB |
| 16634.00   | 16664.00       | Blind Drilling (std)   |  | Projection to bit                        |   | STATE LONGHORN D14-11-12XRLNB AWB |



# Actual Wellpath Report

STATE LONGHORN D14-11-12XRLNB AWP

Page 10 of 10



| REFERENCE WELLPATH IDENTIFICATION |                           |          |   |
|-----------------------------------|---------------------------|----------|---|
| Operator                          | BONANZA CREEK OIL COMPANY | Slot     | SLOT#01 STATE LONGHORN D14-11-12XRLNB (695'FSL & 203'FWL, SEC.11) |
| Area                              | COLORADO                  | Well     | STATE LONGHORN D14-11-12XRLNB                                     |
| Field                             | WELD COUNTY               | Wellbore | STATE LONGHORN D14-11-12XRLNB AWP                                 |
| Facility                          | SEC.11-T03N-R63W          |          |   |

| WELLPATH COMMENTS |                    |                |             |   |
|-------------------|--------------------|----------------|-------------|---|
| MD<br>[ft]        | Inclination<br>[°] | Azimuth<br>[°] | TVD<br>[ft] | Comment   |
| 140.00            | 1.080              | 244.130        | 139.99      | FIRST BHI MWD SURVEY                                  |
| 7059.00           | 83.910             | 83.302         | 6484.50     | TOP OF PRODUCTION (1057'FSL & 627'FWL, SEC.11)        |
| 16634.00          | 90.520             | 90.350         | 6480.59     | LAST BHI MWD SURVEY                                   |
| 16664.00          | 90.520             | 90.350         | 6480.32     | BOTTOM HOLE/ 5.5" CASING (1050'FSL & 488'FWL, SEC.12) |