

WELL LOCATION CERTIFICATE - AS - DRILLEDSECTION 26
TOWNSHIP 5 NORTH
RANGE 66 WEST

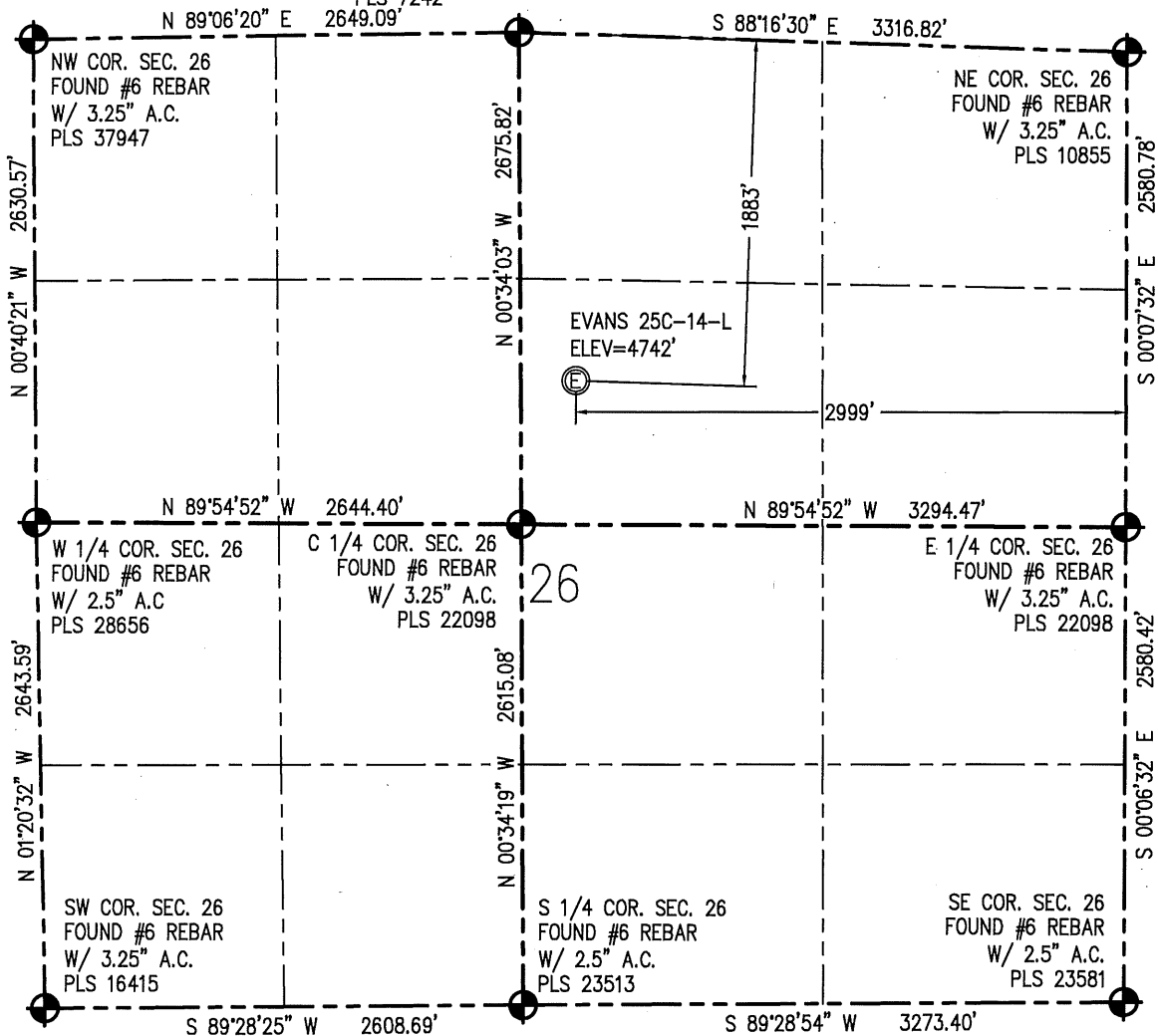
THIS MAP DOES NOT REPRESENT A BOUNDARY SURVEY

N 1/4 COR. SEC. 26

FOUND #6 REBAR

W/ 3.25" A.C.

PLS 7242



IN ACCORDANCE WITH A REQUEST FROM BRANDON LORENZ - SYNERGY RESOURCES, BASELINE ENGINEERING CORP. HAS DETERMINED THE LOCATION OF THE EVANS 25C-14-L TO BE 1883' FNL AND 2999' FEL, AS MEASURED AT NINETY (90) DEGREES FROM THE SECTION LINE OF SECTION 26, TOWNSHIP 5 NORTH, RANGE 66 WEST, 6TH PRINCIPAL MERIDIAN, WELD COUNTY, COLORADO.

I HEREBY CERTIFY THAT THIS WELL LOCATION CERTIFICATE WAS PREPARED BY ME, OR UNDER MY DIRECT SUPERVISION, THAT THE FIELD WORK WAS COMPLETED ON 7/22/2016, THAT IT IS NOT A LAND SURVEY PLAT OR AN IMPROVEMENT SURVEY PLAT, AND THAT IT IS NOT TO BE RELIED UPON FOR ESTABLISHMENT OF FENCE, BUILDING, OR OTHER FUTURE IMPROVEMENT LINES.

Scale 1" = 1000 ft

NOTES:

1) OPERATOR NAME: DARIN ZICAFOOSE.

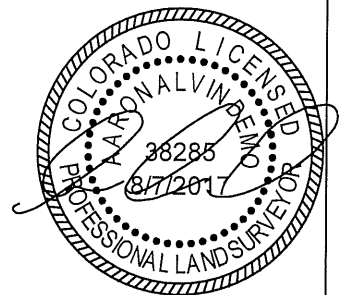
SURFACE HOLE:
LATITUDE: 40.372645° N
LONGITUDE: 104.745634° W
PDOP: 1.3
1/4, 1/4: SW1/4NE1/4

LEGEND

- - FOUND/SET SURVEY MONUMENT PER MONUMENT RECORD EXCEPTIONS NOTED.
- - CALCULATED SURVEY MONUMENT POSITION
- (C) - CALCULATED DIMENSION

AARON A. DEMO
Professional Land Surveyor Registration No. 38285
State of Colorado
FOR AND ON BEHALF OF BASELINE ENGINEERING CORP.

Completed
8/7/2017



PROJECT #: Synergy.252