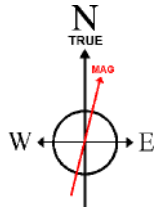


# SYNERGY RESOURCES CORPORATION

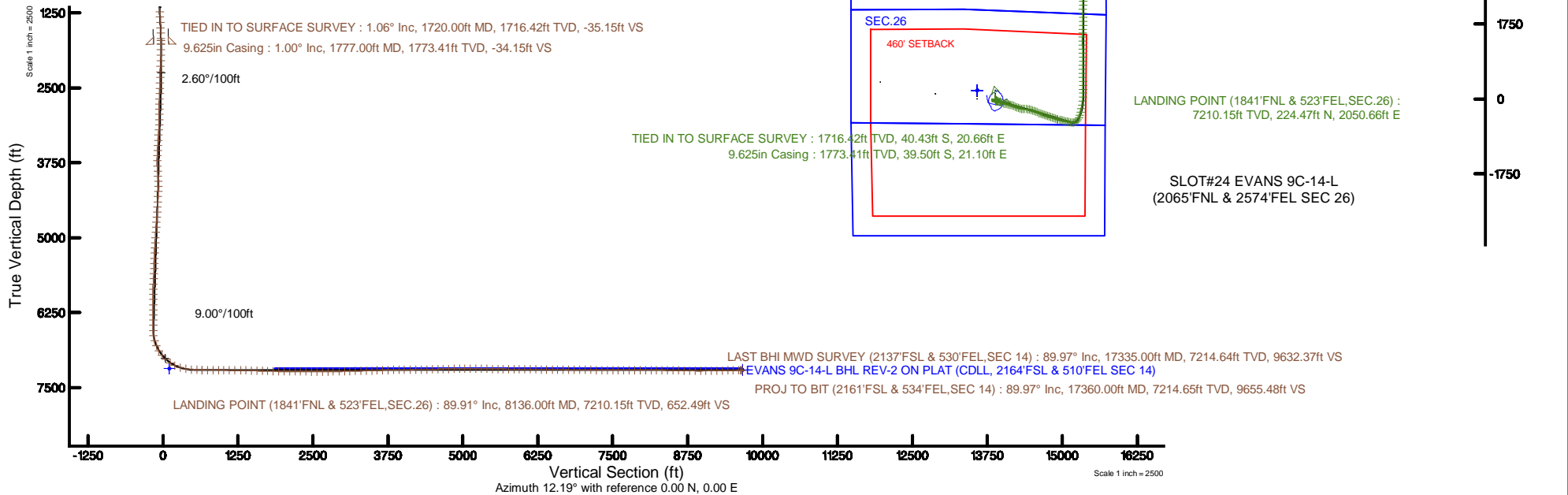
Location: COLORADO Slot: SLOT#24 EVANS 9C-14-L (2065'FNL & 2574'FEL SEC 26)  
 Field: WELD COUNTY (NAD83,TRUE NORTH) Well: EVANS 9C-14-L  
 Facility: SEC.26-T05N-R66W Wellbore: EVANS 9C-14-L PWB

Plot reference wellpath is EVANS 9C-14-L REV-8.0 PWB	Grid System: NAD83 / Lambert Colorado SP, Northern Zone (501), US feet
True vertical depths are referenced to PRECISION 462 (20) (RKB)	* = Wellpath was transformed from a different geodetic datum
Measured depths are referenced to PRECISION 462 (20) (RKB)	North Reference: True north
PRECISION 462 (20) (RKB) to Mean Sea Level: 4767 feet	Scale: True distance
Mean Sea Level to Mud line (At Slot: SLOT#24 EVANS 9C-14-L (2065'FNL & 2574'FEL SEC 26)): 0 feet	Depths are in feet
Coordinates are in feet referenced to Slot	Created by: hutaedr on 2017-02-23
	Database: WA_DEN_Denver.Dbn



BGGM (1900.0 to 2018.0) Dip: 66.87° Field: 52450.7 nT  
 Magnetic North is 8.42 degrees East of True North (at 10/Nov/2016)

To correct azimuth from Magnetic to True add 8.42 degrees



## REFERENCE WELLPATH IDENTIFICATION

Operator	SYNERGY RESOURCES CORPORATION	Slot	SLOT#24 EVANS 9C-14-L (2065'FNL & 2574'FEL SEC 26)
Area	COLORADO	Well	EVANS 9C-14-L
Field	WELD COUNTY (NAD83,TRUE NORTH)	Wellbore	EVANS 9C-14-L AWB
Facility	SEC.26-T05N-R66W		

## REPORT SETUP INFORMATION

Projection System	NAD83 / Lambert Colorado SP, Northern Zone (501), US feet	Software System	WellArchitect® 5.0
North Reference	True	User	Hutaedr
Scale	0.999959	Report Generated	23/Feb/2017 at 09:21
Convergence at slot	0.49° East	Database/Source file	WA_DEN_Denver_Defn/EVANS_9C-14-L_AWP.xml

## WELLPATH LOCATION

	Local coordinates		Grid coordinates		Geographic coordinates	
	North[ft]	East[ft]	Easting[US ft]	Northing[US ft]	Latitude	Longitude
Slot Location	-199.36	424.07	3210606.43	1379293.77	40°22'19.556"N	104°44'38.807"W
Facility Reference Pt			3210180.70	1379489.50	40°22'21.526"N	104°44'44.286"W
Field Reference Pt			3171284.48	1426358.81	40°30'07.643"N	104°53'02.634"W

## WELLPATH DATUM

Calculation method	Minimum curvature	PRECISION 462 (20') (RKB) to Facility Vertical Datum	4767.00ft
Horizontal Reference Pt	Slot	PRECISION 462 (20') (RKB) to Mean Sea Level	4767.00ft
Vertical Reference Pt	PRECISION 462 (20') (RKB)	PRECISION 462 (20') (RKB) to Mud Line at Slot (SLOT#24 EVANS 9C-14-L (2065'FNL & 2574'FEL SEC 26))	4767.00ft
MD Reference Pt	PRECISION 462 (20') (RKB)	Section Origin	N 0.00, E 0.00 ft
Field Vertical Reference	Mean Sea Level	Section Azimuth	12.06°

REFERENCE WELLPATH IDENTIFICATION			
Operator	SYNERGY RESOURCES CORPORATION	Slot	SLOT#24 EVANS 9C-14-L (2065'FNL & 2574'FEL SEC 26)
Area	COLORADO	Well	EVANS 9C-14-L
Field	WELD COUNTY (NAD83,TRUE NORTH)	Wellbore	EVANS 9C-14-L AWB
Facility	SEC.26-T05N-R66W		

WELLPATH DATA (189 stations)										
MD [ft]	Inclination [°]	Azimuth [°]	TVD [ft]	Vert Sect [ft]	North [ft]	East [ft]	Latitude	Longitude	DLS [°/100ft]	Comments
0.00	0.000	134.510	0.00	0.00	0.00	0.00	40°22'19.556"N	104°44'38.807"W	0.00	
154.00	0.350	134.510	154.00	-0.25	-0.33	0.34	40°22'19.553"N	104°44'38.803"W	0.23	
242.00	0.350	153.500	242.00	-0.61	-0.76	0.65	40°22'19.549"N	104°44'38.799"W	0.13	
331.00	1.490	164.040	330.98	-1.84	-2.11	1.09	40°22'19.535"N	104°44'38.793"W	1.29	
424.00	3.780	162.110	423.88	-5.57	-6.19	2.36	40°22'19.495"N	104°44'38.776"W	2.46	
514.00	6.240	162.640	513.53	-12.40	-13.69	4.73	40°22'19.421"N	104°44'38.746"W	2.73	
604.00	7.210	161.050	602.91	-21.50	-23.70	8.03	40°22'19.322"N	104°44'38.703"W	1.10	
693.00	7.300	162.640	691.20	-31.21	-34.38	11.53	40°22'19.216"N	104°44'38.658"W	0.25	
783.00	6.330	164.040	780.56	-40.57	-44.61	14.60	40°22'19.115"N	104°44'38.618"W	1.09	
873.00	4.660	173.010	870.14	-48.41	-53.00	16.41	40°22'19.032"N	104°44'38.595"W	2.08	
963.00	3.170	193.220	959.94	-54.35	-59.06	16.28	40°22'18.972"N	104°44'38.597"W	2.23	
1053.00	0.790	173.710	1049.88	-57.43	-62.10	15.78	40°22'18.942"N	104°44'38.603"W	2.71	
1143.00	0.790	17.790	1139.87	-57.40	-62.12	16.04	40°22'18.942"N	104°44'38.600"W	1.72	
1233.00	2.290	14.800	1229.84	-54.99	-59.79	16.69	40°22'18.965"N	104°44'38.591"W	1.67	
1323.00	2.900	10.940	1319.75	-50.92	-55.82	17.58	40°22'19.004"N	104°44'38.580"W	0.70	
1413.00	2.810	9.530	1409.63	-46.44	-51.41	18.38	40°22'19.048"N	104°44'38.570"W	0.13	
1503.00	2.460	10.060	1499.54	-42.30	-47.33	19.08	40°22'19.088"N	104°44'38.561"W	0.39	
1593.00	2.200	13.570	1589.46	-38.64	-43.75	19.82	40°22'19.124"N	104°44'38.551"W	0.33	
1683.00	1.230	12.340	1679.42	-35.95	-41.13	20.43	40°22'19.150"N	104°44'38.543"W	1.08	
1720.00	1.060	23.940	1716.42	-35.22	-40.43	20.66	40°22'19.157"N	104°44'38.540"W	0.77	TIED IN TO SURFACE SURVEY
1777.00	1.000	26.940	1773.41	-34.22	-39.50	21.10	40°22'19.166"N	104°44'38.534"W	0.14	
1871.00	2.790	108.240	1867.36	-33.68	-39.49	23.64	40°22'19.166"N	104°44'38.502"W	3.00	
1963.00	6.900	118.260	1959.02	-35.46	-42.80	30.64	40°22'19.133"N	104°44'38.411"W	4.54	
2056.00	9.330	119.340	2051.08	-39.26	-49.14	42.13	40°22'19.070"N	104°44'38.263"W	2.62	
2150.00	11.080	114.370	2143.59	-43.45	-56.61	57.00	40°22'18.997"N	104°44'38.071"W	2.08	
2244.00	11.550	109.190	2235.76	-46.55	-63.43	74.12	40°22'18.929"N	104°44'37.849"W	1.19	
2338.00	11.440	106.190	2327.88	-48.39	-69.12	91.96	40°22'18.873"N	104°44'37.619"W	0.65	
2432.00	13.000	108.130	2419.75	-50.18	-75.01	110.96	40°22'18.815"N	104°44'37.373"W	1.72	
2525.00	14.860	110.230	2510.01	-52.98	-82.39	132.09	40°22'18.742"N	104°44'37.100"W	2.07	
2618.00	17.810	109.610	2599.24	-56.55	-91.29	156.69	40°22'18.654"N	104°44'36.783"W	3.18	
2711.00	22.490	108.810	2686.53	-60.51	-101.80	186.94	40°22'18.550"N	104°44'36.392"W	5.04	
2805.00	22.670	105.800	2773.33	-63.81	-112.53	221.39	40°22'18.444"N	104°44'35.947"W	1.24	
2898.00	23.070	102.910	2859.02	-65.25	-121.48	256.39	40°22'18.356"N	104°44'35.494"W	1.28	
2991.00	22.040	102.130	2944.90	-65.54	-129.22	291.22	40°22'18.279"N	104°44'35.044"W	1.15	
3085.00	23.640	100.780	3031.53	-65.14	-136.45	326.98	40°22'18.208"N	104°44'34.582"W	1.79	
3177.00	23.430	104.610	3115.88	-65.55	-144.51	362.80	40°22'18.128"N	104°44'34.120"W	1.68	
3271.00	23.250	111.400	3202.21	-69.39	-156.00	398.16	40°22'18.014"N	104°44'33.663"W	2.87	
3366.00	23.540	112.020	3289.40	-75.72	-169.96	433.21	40°22'17.877"N	104°44'33.210"W	0.40	
3461.00	23.480	111.280	3376.51	-82.04	-183.94	468.43	40°22'17.738"N	104°44'32.755"W	0.32	
3554.00	23.400	109.520	3461.84	-87.41	-196.83	503.10	40°22'17.611"N	104°44'32.307"W	0.76	
3647.00	23.350	108.190	3547.20	-91.77	-208.76	538.01	40°22'17.493"N	104°44'31.856"W	0.57	
3739.00	23.720	107.270	3631.55	-95.40	-219.94	573.01	40°22'17.383"N	104°44'31.404"W	0.57	
3834.00	23.690	103.620	3718.54	-97.66	-230.11	609.80	40°22'17.282"N	104°44'30.928"W	1.54	
3929.00	23.950	96.930	3805.47	-96.46	-236.93	647.50	40°22'17.215"N	104°44'30.441"W	2.86	
4022.00	23.970	91.500	3890.46	-91.31	-239.70	685.13	40°22'17.187"N	104°44'29.955"W	2.37	

REFERENCE WELLPATH IDENTIFICATION			
Operator	SYNERGY RESOURCES CORPORATION	Slot	SLOT#24 EVANS 9C-14-L (2065'FNL & 2574'FEL SEC 26)
Area	COLORADO	Well	EVANS 9C-14-L
Field	WELD COUNTY (NAD83,TRUE NORTH)	Wellbore	EVANS 9C-14-L AWP
Facility	SEC.26-T05N-R66W		

WELLPATH DATA (189 stations)										
MD [ft]	Inclination [°]	Azimuth [°]	TVD [ft]	Vert Sect [ft]	North [ft]	East [ft]	Latitude	Longitude	DLS [°/100ft]	Comments
4115.00	23.970	91.100	3975.44	-84.26	-240.56	722.90	40°22'17.179"N	104°44'29.467"W	0.17	
4208.00	23.540	95.150	4060.57	-78.44	-242.59	760.29	40°22'17.159"N	104°44'28.984"W	1.81	
4301.00	23.860	105.790	4145.76	-77.43	-249.38	796.90	40°22'17.092"N	104°44'28.511"W	4.61	
4395.00	23.770	110.010	4231.77	-81.29	-261.03	833.00	40°22'16.976"N	104°44'28.045"W	1.81	
4488.00	24.030	109.860	4316.79	-86.45	-273.88	868.42	40°22'16.849"N	104°44'27.587"W	0.29	
4581.00	23.850	108.930	4401.79	-91.27	-286.41	904.01	40°22'16.726"N	104°44'27.127"W	0.45	
4674.00	23.940	108.410	4486.82	-95.61	-298.47	939.70	40°22'16.606"N	104°44'26.666"W	0.25	
4767.00	23.820	109.700	4571.86	-100.20	-310.76	975.28	40°22'16.485"N	104°44'26.206"W	0.58	
4861.00	23.770	110.630	4657.87	-105.55	-323.83	1010.88	40°22'16.356"N	104°44'25.747"W	0.40	
4954.00	23.930	110.500	4742.93	-111.11	-337.04	1046.09	40°22'16.225"N	104°44'25.292"W	0.18	
5048.00	23.890	111.560	4828.86	-117.05	-350.71	1081.65	40°22'16.090"N	104°44'24.832"W	0.46	
5141.00	23.080	111.780	4914.16	-123.24	-364.40	1116.09	40°22'15.955"N	104°44'24.387"W	0.88	
5236.00	23.210	110.730	5001.51	-129.21	-377.93	1150.89	40°22'15.821"N	104°44'23.938"W	0.46	
5331.00	23.130	109.520	5088.85	-134.45	-390.79	1185.99	40°22'15.694"N	104°44'23.484"W	0.51	
5423.00	22.900	109.990	5173.53	-139.27	-402.95	1219.84	40°22'15.574"N	104°44'23.047"W	0.32	
5516.00	23.100	108.630	5259.13	-143.86	-414.97	1254.13	40°22'15.455"N	104°44'22.604"W	0.61	
5610.00	23.150	106.570	5345.58	-147.42	-426.13	1289.32	40°22'15.345"N	104°44'22.149"W	0.86	
5703.00	23.240	104.480	5431.07	-149.64	-435.93	1324.60	40°22'15.248"N	104°44'21.693"W	0.89	
5796.00	23.260	105.830	5516.51	-151.62	-445.52	1360.04	40°22'15.153"N	104°44'21.236"W	0.57	
5888.00	22.990	109.730	5601.13	-155.22	-456.55	1394.43	40°22'15.044"N	104°44'20.791"W	1.69	
5982.00	23.200	111.900	5687.60	-160.83	-469.65	1428.88	40°22'14.915"N	104°44'20.346"W	0.93	
6076.00	23.480	107.100	5773.91	-165.65	-482.06	1463.97	40°22'14.792"N	104°44'19.893"W	2.04	
6170.00	23.130	102.550	5860.25	-167.45	-491.58	1499.89	40°22'14.698"N	104°44'19.429"W	1.95	
6263.00	23.250	100.330	5945.74	-167.06	-498.84	1535.78	40°22'14.626"N	104°44'18.965"W	0.95	
6357.00	22.790	102.940	6032.25	-166.78	-506.25	1571.77	40°22'14.553"N	104°44'18.500"W	1.19	
6450.00	22.550	104.540	6118.07	-167.83	-514.76	1606.59	40°22'14.469"N	104°44'18.050"W	0.71	
6545.00	23.460	104.270	6205.51	-169.35	-523.99	1642.55	40°22'14.378"N	104°44'17.586"W	0.96	
6638.00	23.800	101.910	6290.72	-170.02	-532.43	1678.85	40°22'14.294"N	104°44'17.117"W	1.08	
6732.00	24.030	100.490	6376.65	-169.45	-539.82	1716.23	40°22'14.221"N	104°44'16.634"W	0.66	
6825.00	23.260	102.260	6461.84	-168.99	-547.17	1752.79	40°22'14.148"N	104°44'16.161"W	1.13	
6919.00	22.280	102.460	6548.51	-169.18	-554.96	1788.33	40°22'14.071"N	104°44'15.702"W	1.05	
7014.00	23.590	83.540	6636.12	-163.27	-556.71	1824.86	40°22'14.054"N	104°44'15.230"W	7.85	
7107.00	25.230	65.300	6720.93	-145.47	-546.32	1861.41	40°22'14.157"N	104°44'14.758"W	8.26	
7200.00	27.950	48.120	6804.21	-115.94	-523.45	1895.70	40°22'14.383"N	104°44'14.315"W	8.74	
7293.00	33.290	35.890	6884.29	-74.91	-488.16	1926.94	40°22'14.731"N	104°44'13.911"W	8.80	
7386.00	39.240	24.570	6959.32	-22.74	-440.63	1954.19	40°22'15.201"N	104°44'13.559"W	9.61	
7480.00	46.090	15.230	7028.47	40.23	-380.79	1975.50	40°22'15.792"N	104°44'13.284"W	9.91	
7575.00	55.330	11.310	7088.58	113.64	-309.29	1992.19	40°22'16.499"N	104°44'13.068"W	10.23	
7668.00	64.410	12.300	7135.22	193.99	-230.65	2008.66	40°22'17.276"N	104°44'12.855"W	9.81	
7762.00	73.840	11.080	7168.67	281.71	-144.74	2026.40	40°22'18.125"N	104°44'12.626"W	10.10	
7856.00	81.820	7.390	7188.48	373.40	-54.12	2041.09	40°22'19.020"N	104°44'12.436"W	9.31	
7951.00	85.410	2.530	7199.05	467.04	39.89	2049.24	40°22'19.949"N	104°44'12.331"W	6.33	
8044.00	85.470	359.640	7206.45	558.04	132.57	2050.99	40°22'20.865"N	104°44'12.308"W	3.10	
8136.00	89.910	359.950	7210.15	647.85	224.47	2050.66	40°22'21.773"N	104°44'12.312"W	4.84	LANDING POINT (1841'FNL & 523'FEL, SEC.26)
8228.00	89.820	358.870	7210.37	737.61	316.46	2049.71	40°22'22.682"N	104°44'12.324"W	1.18	

## REFERENCE WELLPATH IDENTIFICATION

Operator	SYNERGY RESOURCES CORPORATION	Slot	SLOT#24 EVANS 9C-14-L (2065'FNL & 2574'FEL SEC 26)
Area	COLORADO	Well	EVANS 9C-14-L
Field	WELD COUNTY (NAD83,TRUE NORTH)	Wellbore	EVANS 9C-14-L AWP
Facility	SEC.26-T05N-R66W		

## WELLPATH DATA (189 stations)

MD [ft]	Inclination [°]	Azimuth [°]	TVD [ft]	Vert Sect [ft]	North [ft]	East [ft]	Latitude	Longitude	DLS [°/100ft]	Comments
8322.00	90.090	358.320	7210.44	829.03	410.44	2047.41	40°22'23.611"N	104°44'12.354"W	0.65	
8414.00	89.940	358.830	7210.42	918.49	502.41	2045.12	40°22'24.520"N	104°44'12.383"W	0.58	
8507.00	89.720	359.600	7210.70	1009.17	595.40	2043.85	40°22'25.439"N	104°44'12.400"W	0.86	
8601.00	89.380	0.600	7211.43	1101.12	689.39	2044.01	40°22'26.368"N	104°44'12.398"W	1.12	
8696.00	89.380	1.860	7212.46	1194.43	784.36	2046.05	40°22'27.306"N	104°44'12.371"W	1.33	
8792.00	89.350	0.920	7213.53	1288.76	880.33	2048.38	40°22'28.254"N	104°44'12.341"W	0.98	
8885.00	89.050	358.870	7214.82	1379.66	973.31	2048.21	40°22'29.173"N	104°44'12.343"W	2.23	
8978.00	88.370	358.410	7216.92	1470.10	1066.26	2046.00	40°22'30.092"N	104°44'12.371"W	0.88	
9070.00	88.590	358.180	7219.36	1559.43	1158.19	2043.27	40°22'31.000"N	104°44'12.407"W	0.35	
9164.00	88.620	358.720	7221.65	1650.76	1252.13	2040.72	40°22'31.928"N	104°44'12.439"W	0.58	
9258.00	88.650	0.010	7223.89	1742.44	1346.09	2039.68	40°22'32.857"N	104°44'12.453"W	1.37	
9352.00	88.400	1.380	7226.31	1834.56	1440.05	2040.82	40°22'33.785"N	104°44'12.438"W	1.48	
9445.00	89.140	2.090	7228.30	1926.03	1532.99	2043.64	40°22'34.704"N	104°44'12.401"W	1.10	
9538.00	90.150	1.370	7228.88	2017.52	1625.94	2046.45	40°22'35.622"N	104°44'12.365"W	1.33	
9631.00	90.180	0.530	7228.61	2108.78	1718.93	2047.99	40°22'36.541"N	104°44'12.345"W	0.90	
9724.00	89.380	0.000	7228.97	2199.82	1811.92	2048.42	40°22'37.460"N	104°44'12.339"W	1.03	
9816.00	88.860	358.820	7230.38	2289.57	1903.91	2047.47	40°22'38.369"N	104°44'12.352"W	1.40	
9910.00	89.110	359.680	7232.05	2381.22	1997.88	2046.24	40°22'39.298"N	104°44'12.367"W	0.95	
10002.00	89.080	0.570	7233.50	2471.22	2089.87	2046.44	40°22'40.207"N	104°44'12.365"W	0.97	
10097.00	89.940	0.690	7234.31	2564.33	2184.86	2047.49	40°22'41.145"N	104°44'12.351"W	0.91	
10190.00	90.520	359.810	7233.94	2655.36	2277.86	2047.89	40°22'42.064"N	104°44'12.346"W	1.13	
10282.00	91.080	359.830	7232.65	2745.26	2369.85	2047.60	40°22'42.973"N	104°44'12.349"W	0.61	
10376.00	90.920	359.970	7231.01	2837.14	2463.83	2047.44	40°22'43.902"N	104°44'12.351"W	0.23	
10471.00	90.980	359.960	7229.44	2930.02	2558.82	2047.38	40°22'44.841"N	104°44'12.352"W	0.06	
10566.00	91.480	359.770	7227.40	3022.86	2653.80	2047.16	40°22'45.779"N	104°44'12.355"W	0.56	
10659.00	91.450	359.470	7225.02	3113.64	2746.77	2046.54	40°22'46.698"N	104°44'12.363"W	0.32	
10752.00	91.450	359.590	7222.67	3204.40	2839.73	2045.78	40°22'47.616"N	104°44'12.372"W	0.13	
10846.00	91.510	359.850	7220.24	3296.20	2933.70	2045.32	40°22'48.545"N	104°44'12.378"W	0.28	
10939.00	91.380	359.830	7217.89	3387.07	3026.67	2045.06	40°22'49.464"N	104°44'12.382"W	0.14	
11032.00	91.320	359.000	7215.70	3477.79	3119.64	2044.11	40°22'50.382"N	104°44'12.394"W	0.89	
11126.00	91.600	359.620	7213.31	3569.44	3213.60	2042.98	40°22'51.311"N	104°44'12.408"W	0.72	
11219.00	91.480	0.570	7210.81	3660.39	3306.57	2043.13	40°22'52.230"N	104°44'12.406"W	1.03	
11312.00	91.630	0.350	7208.29	3751.45	3399.53	2043.88	40°22'53.148"N	104°44'12.396"W	0.29	
11406.00	90.620	358.930	7206.44	3843.23	3493.50	2043.29	40°22'54.077"N	104°44'12.404"W	1.85	
11499.00	90.800	359.060	7205.29	3933.82	3586.48	2041.66	40°22'54.996"N	104°44'12.425"W	0.24	
11591.00	90.680	1.000	7204.10	4023.79	3678.47	2041.70	40°22'55.905"N	104°44'12.424"W	2.11	
11687.00	90.520	1.590	7203.09	4118.10	3774.44	2043.87	40°22'56.853"N	104°44'12.396"W	0.64	
11781.00	90.430	0.740	7202.31	4210.40	3868.42	2045.78	40°22'57.782"N	104°44'12.371"W	0.91	
11876.00	90.430	0.920	7201.60	4303.58	3963.40	2047.16	40°22'58.720"N	104°44'12.353"W	0.19	
11971.00	91.630	1.150	7199.89	4396.81	4058.37	2048.88	40°22'59.659"N	104°44'12.331"W	1.29	
12065.00	91.630	1.660	7197.22	4489.15	4152.31	2051.18	40°23'00.587"N	104°44'12.301"W	0.54	
12158.00	91.570	359.990	7194.62	4580.33	4245.26	2052.52	40°23'01.505"N	104°44'12.284"W	1.80	
12251.00	91.450	358.090	7192.17	4670.91	4338.21	2050.96	40°23'02.424"N	104°44'12.304"W	2.05	
12345.00	90.310	358.200	7190.73	4762.14	4432.14	2047.92	40°23'03.352"N	104°44'12.343"W	1.22	
12438.00	90.460	357.560	7190.10	4852.30	4525.08	2044.48	40°23'04.271"N	104°44'12.387"W	0.71	

## REFERENCE WELLPATH IDENTIFICATION

Operator	SYNERGY RESOURCES CORPORATION	Slot	SLOT#24 EVANS 9C-14-L (2065'FNL & 2574'FEL SEC 26)
Area	COLORADO	Well	EVANS 9C-14-L
Field	WELD COUNTY (NAD83,TRUE NORTH)	Wellbore	EVANS 9C-14-L AWB
Facility	SEC.26-T05N-R66W		

## WELLPATH DATA (189 stations)

MD [ft]	Inclination [°]	Azimuth [°]	TVD [ft]	Vert Sect [ft]	North [ft]	East [ft]	Latitude	Longitude	DLS [°/100ft]	Comments
12533.00	90.280	358.120	7189.49	4944.39	4620.01	2040.90	40°23'05.209"N	104°44'12.434"W	0.62	
12625.00	90.550	359.460	7188.82	5033.93	4711.98	2038.96	40°23'06.117"N	104°44'12.459"W	1.49	
12719.00	90.340	359.570	7188.09	5125.69	4805.98	2038.16	40°23'07.046"N	104°44'12.469"W	0.25	
12814.00	90.340	357.030	7187.53	5217.95	4900.93	2035.34	40°23'07.985"N	104°44'12.505"W	2.67	
12907.00	89.380	359.600	7187.76	5308.28	4993.88	2032.61	40°23'08.903"N	104°44'12.540"W	2.95	
13001.00	88.460	3.550	7189.53	5400.68	5087.80	2035.19	40°23'09.831"N	104°44'12.507"W	4.31	
13094.00	88.830	0.600	7191.73	5492.23	5180.71	2038.56	40°23'10.749"N	104°44'12.463"W	3.20	
13187.00	89.420	356.910	7193.15	5582.71	5273.66	2036.54	40°23'11.668"N	104°44'12.489"W	4.02	
13280.00	89.480	356.080	7194.04	5672.30	5366.48	2030.85	40°23'12.585"N	104°44'12.563"W	0.89	
13374.00	89.420	355.890	7194.95	5762.62	5460.24	2024.27	40°23'13.512"N	104°44'12.648"W	0.21	
13467.00	89.420	355.770	7195.89	5851.91	5552.99	2017.51	40°23'14.428"N	104°44'12.735"W	0.13	
13559.00	89.480	356.590	7196.77	5940.40	5644.78	2011.38	40°23'15.335"N	104°44'12.814"W	0.89	
13653.00	89.450	358.480	7197.65	6031.39	5738.69	2007.33	40°23'16.263"N	104°44'12.866"W	2.01	
13746.00	90.400	359.300	7197.77	6121.94	5831.67	2005.53	40°23'17.182"N	104°44'12.889"W	1.35	
13841.00	89.480	1.780	7197.87	6215.02	5926.66	2006.43	40°23'18.120"N	104°44'12.878"W	2.78	
13933.00	89.450	3.590	7198.73	6305.78	6018.55	2010.74	40°23'19.028"N	104°44'12.822"W	1.97	
14025.00	89.420	4.300	7199.64	6396.86	6110.32	2017.07	40°23'19.935"N	104°44'12.740"W	0.77	
14120.00	89.540	3.130	7200.50	6490.85	6205.12	2023.22	40°23'20.872"N	104°44'12.660"W	1.24	
14212.00	89.480	1.290	7201.28	6581.48	6297.04	2026.77	40°23'21.780"N	104°44'12.614"W	2.00	
14306.00	89.420	1.890	7202.19	6673.92	6391.00	2029.38	40°23'22.709"N	104°44'12.581"W	0.64	
14399.00	89.450	1.460	7203.10	6765.39	6483.96	2032.10	40°23'23.627"N	104°44'12.545"W	0.46	
14493.00	89.450	1.030	7204.01	6857.72	6577.93	2034.14	40°23'24.556"N	104°44'12.519"W	0.46	
14587.00	89.540	1.220	7204.83	6950.01	6671.91	2035.98	40°23'25.485"N	104°44'12.495"W	0.22	
14681.00	89.480	0.820	7205.64	7042.26	6765.89	2037.66	40°23'26.413"N	104°44'12.473"W	0.43	
14775.00	89.630	1.690	7206.37	7134.60	6859.86	2039.72	40°23'27.342"N	104°44'12.446"W	0.94	
14869.00	89.420	2.010	7207.15	7227.11	6953.81	2042.75	40°23'28.270"N	104°44'12.407"W	0.41	
14964.00	89.540	1.250	7208.01	7320.53	7048.77	2045.45	40°23'29.209"N	104°44'12.372"W	0.81	
15058.00	89.540	1.760	7208.76	7412.94	7142.73	2047.92	40°23'30.137"N	104°44'12.340"W	0.54	
15149.00	90.030	0.500	7209.11	7502.29	7233.71	2049.72	40°23'31.036"N	104°44'12.317"W	1.49	
15241.00	90.000	359.950	7209.08	7592.33	7325.71	2050.08	40°23'31.945"N	104°44'12.312"W	0.60	
15335.00	90.000	0.490	7209.08	7684.33	7419.71	2050.44	40°23'32.874"N	104°44'12.307"W	0.57	
15428.00	90.030	0.730	7209.06	7775.48	7512.71	2051.43	40°23'33.793"N	104°44'12.294"W	0.26	
15521.00	89.940	1.860	7209.08	7866.85	7605.68	2053.53	40°23'34.712"N	104°44'12.267"W	1.22	
15615.00	90.000	0.960	7209.13	7959.23	7699.65	2055.84	40°23'35.641"N	104°44'12.237"W	0.96	
15707.00	89.970	0.620	7209.16	8049.45	7791.64	2057.11	40°23'36.550"N	104°44'12.221"W	0.37	
15801.00	89.970	358.790	7209.20	8141.27	7885.64	2056.63	40°23'37.478"N	104°44'12.227"W	1.95	
15894.00	89.720	357.500	7209.46	8231.54	7978.59	2053.62	40°23'38.397"N	104°44'12.266"W	1.41	
15987.00	89.140	358.540	7210.38	8321.76	8071.52	2050.40	40°23'39.315"N	104°44'12.307"W	1.28	
16082.00	89.080	359.080	7211.86	8414.22	8166.49	2048.43	40°23'40.254"N	104°44'12.332"W	0.57	
16175.00	89.110	358.700	7213.33	8504.77	8259.46	2046.63	40°23'41.172"N	104°44'12.356"W	0.41	
16270.00	89.230	0.580	7214.70	8597.53	8354.45	2046.03	40°23'42.111"N	104°44'12.363"W	1.98	
16363.00	88.920	1.990	7216.20	8688.88	8447.41	2048.12	40°23'43.030"N	104°44'12.336"W	1.55	
16457.00	89.050	0.730	7217.87	8781.23	8541.36	2050.35	40°23'43.958"N	104°44'12.307"W	1.35	
16550.00	88.950	359.720	7219.49	8872.24	8634.35	2050.71	40°23'44.877"N	104°44'12.302"W	1.09	
16645.00	90.520	359.580	7219.93	8965.02	8729.34	2050.13	40°23'45.816"N	104°44'12.310"W	1.66	

## REFERENCE WELLPATH IDENTIFICATION

Operator	SYNERGY RESOURCES CORPORATION	Slot	SLOT#24 EVANS 9C-14-L (2065'FNL & 2574'FEL SEC 26)
Area	COLORADO	Well	EVANS 9C-14-L
Field	WELD COUNTY (NAD83,TRUE NORTH)	Wellbore	EVANS 9C-14-L AWB
Facility	SEC.26-T05N-R66W		

## WELLPATH DATA (189 stations)

MD [ft]	Inclination [°]	Azimuth [°]	TVD [ft]	Vert Sect [ft]	North [ft]	East [ft]	Latitude	Longitude	DLS [°/100ft]	Comments
16737.00	90.490	359.310	7219.12	9054.79	8821.33	2049.24	40°23'46.725"N	104°44'12.321"W	0.30	
16830.00	90.520	359.330	7218.30	9145.50	8914.32	2048.14	40°23'47.643"N	104°44'12.335"W	0.04	
16923.00	90.740	358.560	7217.28	9236.07	9007.30	2046.43	40°23'48.562"N	104°44'12.357"W	0.86	
17017.00	90.400	359.680	7216.34	9327.68	9101.29	2044.98	40°23'49.491"N	104°44'12.376"W	1.25	
17111.00	91.450	358.340	7214.83	9419.24	9195.26	2043.36	40°23'50.420"N	104°44'12.397"W	1.81	
17204.00	89.480	355.310	7214.07	9508.95	9288.09	2038.21	40°23'51.337"N	104°44'12.463"W	3.89	
17297.00	89.880	351.390	7214.59	9597.02	9380.45	2027.44	40°23'52.250"N	104°44'12.602"W	4.24	
17335.00	89.970	349.750	7214.64	9632.38	9417.93	2021.22	40°23'52.620"N	104°44'12.683"W	4.32	LAST BHI MWD SURVEY (2137'FSL & 530'FEL,SEC 14)
17360.00	89.970	349.750	7214.65	9655.51	9442.53	2016.77	40°23'52.863"N	104°44'12.740"W	0.00	PROJ TO BIT (2161'FSL & 534'FEL,SEC 14)

## HOLE & CASING SECTIONS - Ref Wellbore: EVANS 9C-14-L AWB Ref Wellpath: EVANS 9C-14-L AWP

String/Diameter	Start MD [ft]	End MD [ft]	Interval [ft]	Start TVD [ft]	End TVD [ft]	Start N/S [ft]	Start E/W [ft]	End N/S [ft]	End E/W [ft]
9.625in Casing	0.00	1777.00	1777.00	0.00	1773.41	0.00	0.00	-39.50	21.10

## TARGETS

Name	TVD [ft]	North [ft]	East [ft]	Grid East [US ft]	Grid North [US ft]	Latitude	Longitude	Shape
SEC.14-T05N-R66W	0.00	199.36	-424.07	3210180.70	1379489.50	40°22'21.526"N	104°44'44.286"W	polygon
SEC.23-T05N-R66W	0.00	199.36	-424.07	3210180.70	1379489.50	40°22'21.526"N	104°44'44.286"W	polygon
SEC.26-T05N-R66W NORTH HALF	0.00	199.36	-424.07	3210180.70	1379489.50	40°22'21.526"N	104°44'44.286"W	polygon
SEC.26-T05N-R66W SOUTH HALF	0.00	199.36	-424.07	3210180.70	1379489.50	40°22'21.526"N	104°44'44.286"W	polygon
SEC.14-T05N-R66W 460 SETBACK	7185.00	199.36	-424.07	3210180.70	1379489.50	40°22'21.526"N	104°44'44.286"W	polygon
SEC.14-T05N-R66W HALF 460' SETBACK	7185.00	199.36	-424.07	3210180.70	1379489.50	40°22'21.526"N	104°44'44.286"W	polygon
SEC.23-T05N-R66W 460' SETBACK	7185.00	199.36	-424.07	3210180.70	1379489.50	40°22'21.526"N	104°44'44.286"W	polygon
SEC.26-T05N-R66W 460' SETBACK	7185.00	199.36	-424.07	3210180.70	1379489.50	40°22'21.526"N	104°44'44.286"W	polygon
EVANS 9C-14-L BHL REV-1 ON PLAT (CDLL, 2164'FSL & 510'FEL SEC 14)	7205.00	9445.26	2040.81	3212566.57	1388755.68	40°23'52.890"N	104°44'12.430"W	point
EVANS 9C-14-L BHL REV-2 ON PLAT (CDLL, 2164'FSL & 510'FEL SEC 14)	7207.00	9445.26	2040.81	3212566.57	1388755.68	40°23'52.890"N	104°44'12.430"W	point



REFERENCE WELLPATH IDENTIFICATION			
Operator	SYNERGY RESOURCES CORPORATION	Slot	SLOT#24 EVANS 9C-14-L (2065'FNL & 2574'FEL SEC 26)
Area	COLORADO	Well	EVANS 9C-14-L
Field	WELD COUNTY (NAD83,TRUE NORTH)	Wellbore	EVANS 9C-14-L AWB
Facility	SEC.26-T05N-R66W		

WELLPATH COMPOSITION - Ref Wellbore: EVANS 9C-14-L AWB      Ref Wellpath: EVANS 9C-14-L AWP				
Start MD	End MD	Positional Uncertainty Model	Log Name/Comment	Wellbore
[ft]	[ft]			
0.00	1720.00	ISCWSA MWD, Rev. 4 (Standard)	PRECISION DRILLING MWD SURVEYS FROM SYNERGY <154-1720>	EVANS 9C-14-L AWB
1720.00	17335.00	Custom BHI AutoTrak Curve (Axial Corr, Short spacing) (Rockies 0.03Gt model)	BHI AUTOTRAK CURVE MWD AXIAL SHORT ROCKIES GT <1777-17335>	EVANS 9C-14-L AWB
17335.00	17360.00	Blind Drilling (std)	Projection to bit	EVANS 9C-14-L AWB



REFERENCE WELLPATH IDENTIFICATION			
Operator	SYNERGY RESOURCES CORPORATION	Slot	SLOT#24 EVANS 9C-14-L (2065'FNL & 2574'FEL SEC 26)
Area	COLORADO	Well	EVANS 9C-14-L
Field	WELD COUNTY (NAD83,TRUE NORTH)	Wellbore	EVANS 9C-14-L AWB
Facility	SEC.26-T05N-R66W		

WELLPATH COMMENTS				
MD [ft]	Inclination [°]	Azimuth [°]	TVD [ft]	Comment
1720.00	1.060	23.940	1716.42	TIED IN TO SURFACE SURVEY
8136.00	89.910	359.950	7210.15	LANDING POINT (1841'FNL & 523'FEL,SEC.26)
17335.00	89.970	349.750	7214.64	LAST BHI MWD SURVEY (2137'FSL & 530'FEL,SEC 14)
17360.00	89.970	349.750	7214.65	PROJ TO BIT (2161'FSL & 534'FEL,SEC 14)