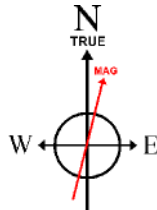


# SYNERGY RESOURCES CORPORATION

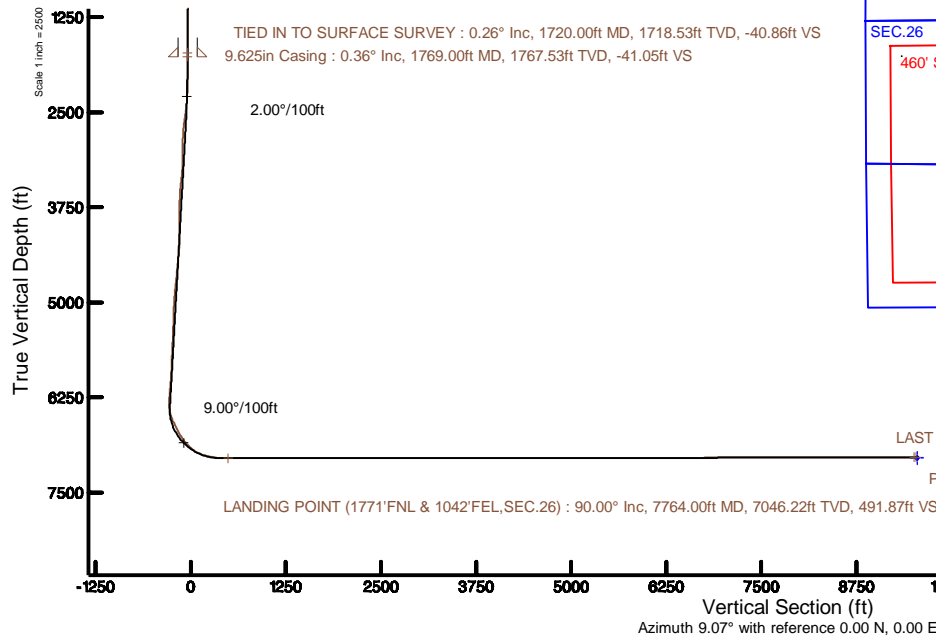
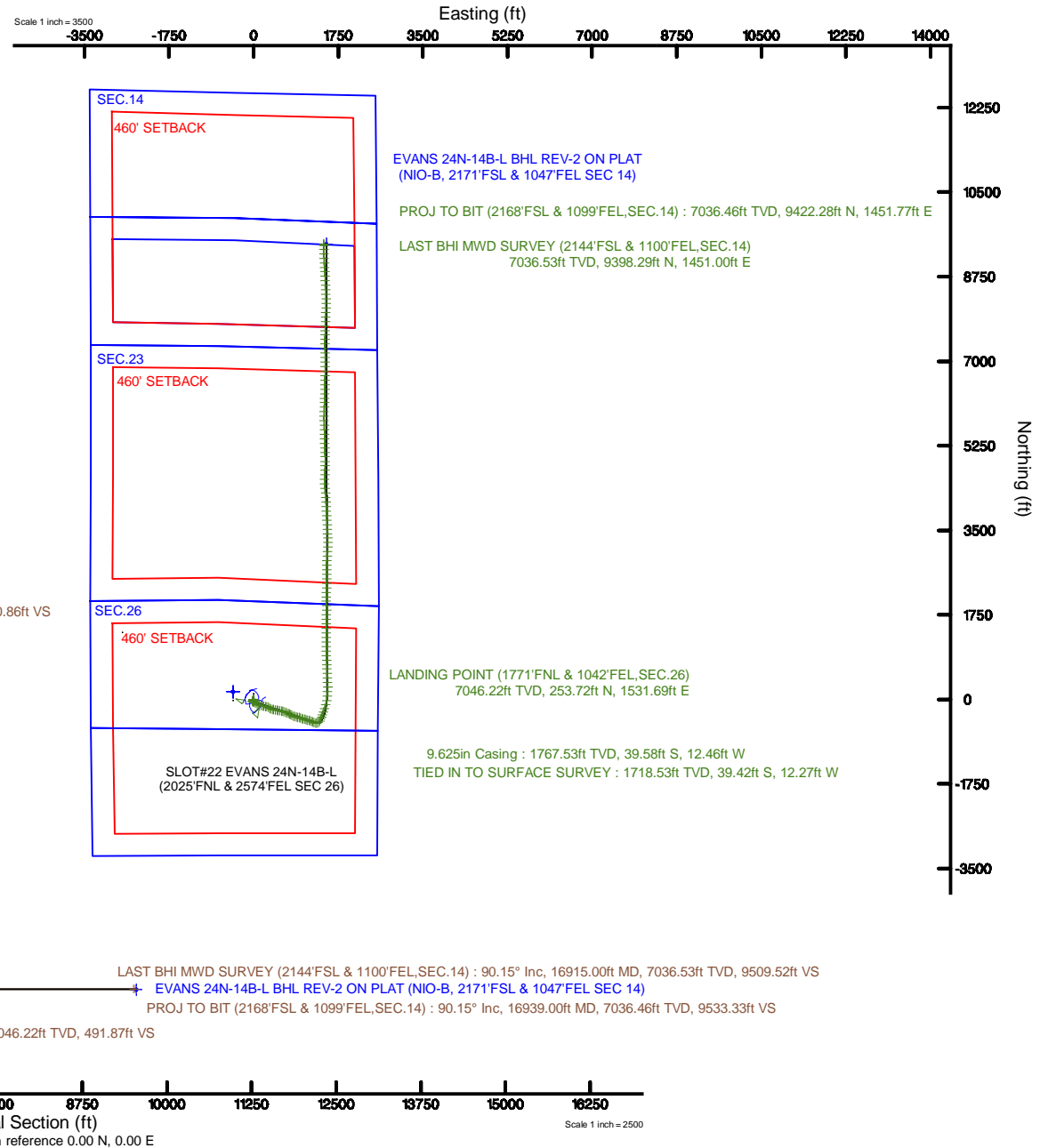
Location: COLORADO Slot: SLOT#22 EVANS 24N-14B-L (2025'FNL & 2574'FEL SEC 26)  
 Field: WELD COUNTY (NAD83,TRUE NORTH) Well: EVANS 24N-14B-L  
 Facility: SEC.26-T05N-R66W Wellbore: EVANS 24N-14B-L PWB

Plot reference wellpath is EVANS 24N-14B-L REV-B.0 PWP	Grid System: NAD83 / Lambert Colorado SP, Northern Zone (501), US feet
True vertical depths are referenced to PRECISION 462 (20) (RKB)	* = Wellpath was transformed from a different geodetic datum
Measured depths are referenced to PRECISION 462 (20) (RKB)	North Reference: True north
PRECISION 462 (20) (RKB) to Mean Sea Level: 4767 feet	Scale: True distance
Mean Sea Level to Mud line (At Slot: SLOT#22 EVANS 24N-14B-L (2025'FNL & 2574'FEL SEC 26)): 0 feet	Depths are in feet
Coordinates are in feet referenced to Slot	Created by: hutaedr on 2017-02-23
	Database: WA_DEN_Denver_Defn



BGGM (1900.0 to 2018.0) Dip: 66.87° Field: 52454.7 nT  
 Magnetic North is 8.42 degrees East of True North (at 27/Oct/2016)

To correct azimuth from Magnetic to True add 8.42 degrees



# Actual Wellpath Report

EVANS 24N-14B-L AWP

Page 1 of 7

## REFERENCE WELLPATH IDENTIFICATION

Operator	SYNERGY RESOURCES CORPORATION	Slot	SLOT#22 EVANS 24N-14B-L (2025'FNL & 2574'FEL SEC 26)
Area	COLORADO	Well	EVANS 24N-14B-L
Field	WELD COUNTY (NAD83,TRUE NORTH)	Wellbore	EVANS 24N-14B-L AWP
Facility	SEC.26-T05N-R66W		

## REPORT SETUP INFORMATION

Projection System	NAD83 / Lambert Colorado SP, Northern Zone (501), US feet	Software System	WellArchitect® 5.0
North Reference	True	User	Hutaedr
Scale	0.999959	Report Generated	23/Feb/2017 at 17:47
Convergence at slot	0.49° East	Database/Source file	WA_DEN_Denver_Defn/EVANS_24N-14B-L_AWP.xml

## WELLPATH LOCATION

	Local coordinates		Grid coordinates		Geographic coordinates	
	North[ft]	East[ft]	Easting[US ft]	Northing[US ft]	Latitude	Longitude
Slot Location	-159.28	424.38	3210606.40	1379333.84	40°22'19.952"N	104°44'38.803"W
Facility Reference Pt			3210180.70	1379489.50	40°22'21.526"N	104°44'44.286"W
Field Reference Pt			3171284.48	1426358.81	40°30'07.643"N	104°53'02.634"W

## WELLPATH DATUM

Calculation method	Minimum curvature	PRECISION 462 (20') (RKB) to Facility Vertical Datum	4767.00ft
Horizontal Reference Pt	Slot	PRECISION 462 (20') (RKB) to Mean Sea Level	4767.00ft
Vertical Reference Pt	PRECISION 462 (20') (RKB)	PRECISION 462 (20') (RKB) to Mud Line at Slot (SLOT#22 EVANS 24N-14B-L (2025'FNL & 2574'FEL SEC 26))	4767.00ft
MD Reference Pt	PRECISION 462 (20') (RKB)	Section Origin	N 0.00, E 0.00 ft
Field Vertical Reference	Mean Sea Level	Section Azimuth	8.76°

REFERENCE WELLPATH IDENTIFICATION			
Operator	SYNERGY RESOURCES CORPORATION	Slot	SLOT#22 EVANS 24N-14B-L (2025'FNL & 2574'FEL SEC 26)
Area	COLORADO	Well	EVANS 24N-14B-L
Field	WELD COUNTY (NAD83,TRUE NORTH)	Wellbore	EVANS 24N-14B-L AWP
Facility	SEC.26-T05N-R66W		

WELLPATH DATA (184 stations)										
MD [ft]	Inclination [°]	Azimuth [°]	TVD [ft]	Vert Sect [ft]	North [ft]	East [ft]	Latitude	Longitude	DLS [°/100ft]	Comments
0.00	0.000	203.770	0.00	0.00	0.00	0.00	40°22'19.952"N	104°44'38.803"W	0.00	
154.00	0.790	203.770	154.00	-1.03	-0.97	-0.43	40°22'19.942"N	104°44'38.809"W	0.51	
242.00	0.530	205.180	241.99	-2.00	-1.90	-0.85	40°22'19.933"N	104°44'38.814"W	0.30	
331.00	0.790	206.760	330.98	-2.98	-2.82	-1.30	40°22'19.924"N	104°44'38.820"W	0.29	
424.00	0.880	206.230	423.97	-4.27	-4.03	-1.90	40°22'19.912"N	104°44'38.828"W	0.10	
514.00	2.370	190.060	513.93	-6.79	-6.48	-2.53	40°22'19.888"N	104°44'38.836"W	1.72	
604.00	4.660	191.110	603.76	-12.30	-11.90	-3.56	40°22'19.834"N	104°44'38.849"W	2.55	
693.00	5.980	193.750	692.37	-20.54	-19.95	-5.36	40°22'19.755"N	104°44'38.872"W	1.51	
783.00	5.280	184.080	781.94	-29.33	-28.64	-6.77	40°22'19.669"N	104°44'38.890"W	1.31	
873.00	3.430	179.690	871.68	-36.12	-35.46	-7.05	40°22'19.602"N	104°44'38.894"W	2.09	
963.00	1.670	217.130	961.59	-39.93	-39.20	-7.83	40°22'19.565"N	104°44'38.904"W	2.60	
1053.00	1.410	282.690	1051.56	-41.01	-40.00	-9.70	40°22'19.557"N	104°44'38.928"W	1.87	
1143.00	1.060	342.460	1141.55	-40.19	-38.96	-11.03	40°22'19.567"N	104°44'38.946"W	1.41	
1233.00	0.350	325.940	1231.54	-39.24	-37.94	-11.43	40°22'19.577"N	104°44'38.951"W	0.81	
1323.00	0.090	258.440	1321.54	-39.06	-37.73	-11.66	40°22'19.579"N	104°44'38.954"W	0.36	
1413.00	0.260	186.370	1411.54	-39.29	-37.95	-11.75	40°22'19.577"N	104°44'38.955"W	0.28	
1503.00	0.260	206.760	1501.54	-39.69	-38.33	-11.86	40°22'19.573"N	104°44'38.956"W	0.10	
1593.00	0.260	185.490	1591.54	-40.09	-38.72	-11.98	40°22'19.569"N	104°44'38.958"W	0.11	
1683.00	0.440	209.750	1681.54	-40.62	-39.22	-12.17	40°22'19.564"N	104°44'38.960"W	0.25	
1720.00	0.260	202.190	1718.53	-40.83	-39.42	-12.27	40°22'19.562"N	104°44'38.962"W	0.50	TIED IN TO SURFACE SURVEY
1779.00	0.400	255.480	1777.53	-41.04	-39.60	-12.52	40°22'19.561"N	104°44'38.965"W	0.54	
1873.00	1.970	300.230	1871.51	-40.58	-38.87	-14.23	40°22'19.568"N	104°44'38.987"W	1.82	
1965.00	2.130	299.950	1963.45	-39.38	-37.22	-17.08	40°22'19.584"N	104°44'39.024"W	0.17	
2058.00	0.850	140.490	2056.44	-39.22	-36.89	-18.14	40°22'19.588"N	104°44'39.037"W	3.16	
2153.00	3.420	123.740	2151.36	-40.88	-39.00	-15.33	40°22'19.567"N	104°44'39.001"W	2.76	
2247.00	5.450	122.000	2245.08	-43.83	-42.93	-9.22	40°22'19.528"N	104°44'38.922"W	2.16	
2341.00	9.080	125.160	2338.31	-48.89	-49.57	0.64	40°22'19.462"N	104°44'38.795"W	3.88	
2434.00	14.250	124.750	2429.35	-57.18	-60.32	16.05	40°22'19.356"N	104°44'38.596"W	5.56	
2527.00	20.090	123.070	2518.17	-68.78	-75.58	38.86	40°22'19.205"N	104°44'38.301"W	6.30	
2621.00	19.900	121.860	2606.51	-81.70	-92.83	65.98	40°22'19.035"N	104°44'37.951"W	0.48	
2713.00	19.950	117.520	2693.00	-92.89	-108.35	93.20	40°22'18.881"N	104°44'37.599"W	1.61	
2807.00	20.010	109.140	2781.36	-100.95	-121.03	122.62	40°22'18.756"N	104°44'37.219"W	3.04	
2901.00	19.620	101.330	2869.81	-104.56	-129.41	153.29	40°22'18.673"N	104°44'36.822"W	2.84	
2993.00	19.770	97.540	2956.44	-104.92	-134.48	183.86	40°22'18.623"N	104°44'36.427"W	1.40	
3087.00	19.890	98.910	3044.86	-104.62	-139.05	215.42	40°22'18.578"N	104°44'36.020"W	0.51	
3180.00	18.850	103.630	3132.60	-105.94	-145.04	245.65	40°22'18.519"N	104°44'35.629"W	2.02	
3273.00	18.400	111.090	3220.74	-110.35	-153.86	273.95	40°22'18.432"N	104°44'35.264"W	2.61	
3369.00	18.950	114.930	3311.69	-117.93	-165.88	302.23	40°22'18.313"N	104°44'34.898"W	1.40	
3463.00	19.840	117.970	3400.36	-127.43	-179.80	330.16	40°22'18.175"N	104°44'34.537"W	1.43	
3556.00	19.750	114.320	3487.87	-136.84	-193.67	358.41	40°22'18.038"N	104°44'34.172"W	1.33	
3649.00	19.700	108.670	3575.42	-143.75	-205.16	387.59	40°22'17.925"N	104°44'33.795"W	2.05	
3741.00	19.900	101.970	3661.99	-147.30	-213.38	417.60	40°22'17.843"N	104°44'33.408"W	2.48	
3836.00	19.910	100.060	3751.32	-148.57	-219.55	449.34	40°22'17.782"N	104°44'32.998"W	0.68	
3932.00	19.890	99.490	3841.59	-149.15	-225.10	481.54	40°22'17.728"N	104°44'32.582"W	0.20	
4024.00	19.920	98.810	3928.09	-149.36	-230.08	512.47	40°22'17.678"N	104°44'32.182"W	0.25	

## REFERENCE WELLPATH IDENTIFICATION

Operator	SYNERGY RESOURCES CORPORATION	Slot	SLOT#22 EVANS 24N-14B-L (2025'FNL & 2574'FEL SEC 26)
Area	COLORADO	Well	EVANS 24N-14B-L
Field	WELD COUNTY (NAD83, TRUE NORTH)	Wellbore	EVANS 24N-14B-L AWP
Facility	SEC.26-T05N-R66W		

## WELLPATH DATA (184 stations)

MD [ft]	Inclination [°]	Azimuth [°]	TVD [ft]	Vert Sect [ft]	North [ft]	East [ft]	Latitude	Longitude	DLS [°/100ft]	Comments
4117.00	19.900	98.290	4015.53	-149.25	-234.79	543.78	40°22'17.632"N	104°44'31.777"W	0.19	
4210.00	18.560	99.120	4103.34	-149.21	-239.42	574.06	40°22'17.586"N	104°44'31.386"W	1.47	
4304.00	17.710	106.350	4192.68	-151.19	-245.82	602.56	40°22'17.523"N	104°44'31.018"W	2.56	
4397.00	18.790	111.410	4281.01	-156.34	-255.27	630.08	40°22'17.429"N	104°44'30.662"W	2.06	
4490.00	18.900	114.140	4369.02	-163.62	-266.89	657.76	40°22'17.315"N	104°44'30.305"W	0.96	
4583.00	19.010	113.420	4456.98	-171.45	-279.08	685.41	40°22'17.194"N	104°44'29.948"W	0.28	
4676.00	19.110	113.730	4544.88	-179.21	-291.22	713.24	40°22'17.074"N	104°44'29.588"W	0.15	
4769.00	18.870	115.410	4632.82	-187.45	-303.80	740.76	40°22'16.950"N	104°44'29.232"W	0.64	
4864.00	18.940	117.210	4722.70	-196.74	-317.44	768.35	40°22'16.815"N	104°44'28.876"W	0.62	
4956.00	19.010	117.940	4809.70	-206.38	-331.29	794.87	40°22'16.678"N	104°44'28.533"W	0.27	
5050.00	19.170	113.840	4898.53	-215.43	-344.70	822.51	40°22'16.546"N	104°44'28.176"W	1.44	
5143.00	19.100	109.150	4986.40	-222.15	-355.87	850.85	40°22'16.435"N	104°44'27.810"W	1.65	
5238.00	19.060	103.430	5076.19	-226.21	-364.57	880.63	40°22'16.349"N	104°44'27.425"W	1.97	
5333.00	18.620	101.910	5166.10	-228.31	-371.30	910.55	40°22'16.283"N	104°44'27.039"W	0.69	
5425.00	18.800	107.350	5253.24	-231.33	-378.75	939.08	40°22'16.209"N	104°44'26.670"W	1.91	
5519.00	18.810	107.460	5342.23	-235.89	-387.82	967.99	40°22'16.120"N	104°44'26.297"W	0.04	
5612.00	19.070	104.850	5430.19	-239.77	-396.21	996.98	40°22'16.037"N	104°44'25.922"W	0.95	
5705.00	19.020	103.810	5518.10	-242.71	-403.72	1026.38	40°22'15.962"N	104°44'25.542"W	0.37	
5798.00	19.170	107.840	5605.99	-246.46	-412.02	1055.63	40°22'15.880"N	104°44'25.164"W	1.43	
5890.00	18.400	108.620	5693.09	-251.33	-421.28	1083.77	40°22'15.789"N	104°44'24.801"W	0.88	
5985.00	19.060	104.630	5783.06	-255.48	-429.99	1112.99	40°22'15.703"N	104°44'24.423"W	1.52	
6078.00	18.390	105.210	5871.14	-258.68	-437.67	1141.84	40°22'15.627"N	104°44'24.051"W	0.75	
6172.00	18.500	110.080	5960.31	-263.28	-446.68	1170.16	40°22'15.538"N	104°44'23.685"W	1.64	
6265.00	19.060	113.880	6048.37	-270.14	-457.89	1197.90	40°22'15.427"N	104°44'23.326"W	1.45	
6359.00	19.070	114.630	6137.21	-278.34	-470.51	1225.89	40°22'15.302"N	104°44'22.965"W	0.26	
6453.00	18.640	108.820	6226.17	-285.16	-481.75	1254.07	40°22'15.191"N	104°44'22.601"W	2.05	
6548.00	18.650	101.380	6316.20	-288.51	-489.65	1283.34	40°22'15.113"N	104°44'22.223"W	2.50	
6640.00	18.520	84.220	6403.47	-285.51	-491.08	1312.32	40°22'15.099"N	104°44'21.848"W	5.93	
6734.00	23.350	51.250	6491.54	-267.96	-477.87	1341.82	40°22'15.230"N	104°44'21.467"W	13.33	
6827.00	28.330	30.530	6575.38	-233.79	-447.24	1367.47	40°22'15.532"N	104°44'21.136"W	11.01	
6921.00	25.900	21.030	6659.09	-192.99	-408.84	1386.18	40°22'15.912"N	104°44'20.894"W	5.27	
7016.00	31.780	20.270	6742.27	-148.16	-365.97	1402.30	40°22'16.335"N	104°44'20.685"W	6.20	
7109.00	38.590	20.940	6818.23	-95.75	-315.85	1421.18	40°22'16.830"N	104°44'20.442"W	7.33	
7203.00	46.460	23.150	6887.46	-33.99	-257.05	1445.09	40°22'17.411"N	104°44'20.133"W	8.52	
7295.00	56.030	19.310	6944.99	35.99	-190.22	1470.88	40°22'18.072"N	104°44'19.799"W	10.90	
7389.00	66.880	14.380	6989.87	117.61	-111.29	1494.58	40°22'18.852"N	104°44'19.493"W	12.42	
7482.00	76.010	9.630	7019.44	205.52	-25.15	1512.80	40°22'19.703"N	104°44'19.258"W	10.94	
7577.00	81.840	4.700	7037.70	298.64	67.29	1524.38	40°22'20.616"N	104°44'19.108"W	7.97	
7670.00	88.830	2.240	7045.26	390.87	159.75	1529.98	40°22'21.530"N	104°44'19.035"W	7.96	
7764.00	90.000	359.850	7046.22	484.01	253.72	1531.69	40°22'22.459"N	104°44'19.013"W	2.83	LANDING POINT (1771'FNL & 1042'FEL, SEC.26)
7858.00	89.820	358.370	7046.36	576.67	347.70	1530.23	40°22'23.387"N	104°44'19.032"W	1.59	
7953.00	89.780	357.800	7046.69	670.03	442.65	1527.06	40°22'24.326"N	104°44'19.073"W	0.60	
8046.00	90.060	357.420	7046.82	761.27	535.57	1523.18	40°22'25.244"N	104°44'19.123"W	0.51	
8138.00	89.780	357.510	7046.95	851.49	627.48	1519.11	40°22'26.152"N	104°44'19.176"W	0.32	
8231.00	90.060	358.150	7047.08	942.80	720.41	1515.59	40°22'27.070"N	104°44'19.221"W	0.75	

# Actual Wellpath Report

EVANS 24N-14B-L AWP

Page 4 of 7

REFERENCE WELLPATH IDENTIFICATION			
Operator	SYNERGY RESOURCES CORPORATION	Slot	SLOT#22 EVANS 24N-14B-L (2025'FNL & 2574'FEL SEC 26)
Area	COLORADO	Well	EVANS 24N-14B-L
Field	WELD COUNTY (NAD83, TRUE NORTH)	Wellbore	EVANS 24N-14B-L AWP
Facility	SEC.26-T05N-R66W		

WELLPATH DATA (184 stations)										
MD [ft]	Inclination [°]	Azimuth [°]	TVD [ft]	Vert Sect [ft]	North [ft]	East [ft]	Latitude	Longitude	DLS [°/100ft]	Comments
8324.00	89.850	356.850	7047.16	1034.01	813.32	1511.53	40°22'27.989"N	104°44'19.273"W	1.42	
8416.00	89.820	357.380	7047.42	1124.12	905.20	1506.90	40°22'28.896"N	104°44'19.333"W	0.58	
8510.00	89.910	358.400	7047.64	1216.43	999.14	1503.44	40°22'29.825"N	104°44'19.378"W	1.09	
8604.00	89.970	0.020	7047.74	1309.12	1093.13	1502.14	40°22'30.753"N	104°44'19.394"W	1.72	
8698.00	90.030	0.260	7047.74	1402.06	1187.12	1502.37	40°22'31.682"N	104°44'19.391"W	0.26	
8794.00	90.000	359.860	7047.72	1496.96	1283.12	1502.47	40°22'32.631"N	104°44'19.390"W	0.42	
8887.00	89.970	359.880	7047.74	1588.84	1376.12	1502.26	40°22'33.550"N	104°44'19.393"W	0.04	
8980.00	90.060	0.690	7047.72	1680.83	1469.12	1502.73	40°22'34.469"N	104°44'19.387"W	0.88	
9072.00	89.970	1.130	7047.69	1771.96	1561.11	1504.19	40°22'35.378"N	104°44'19.368"W	0.49	
9167.00	90.030	1.170	7047.69	1866.13	1656.09	1506.09	40°22'36.317"N	104°44'19.343"W	0.08	
9260.00	90.030	0.660	7047.64	1958.26	1749.08	1507.58	40°22'37.235"N	104°44'19.324"W	0.55	
9354.00	89.750	0.010	7047.82	2051.24	1843.08	1508.13	40°22'38.164"N	104°44'19.316"W	0.75	
9447.00	89.940	359.520	7048.08	2143.10	1936.08	1507.75	40°22'39.083"N	104°44'19.321"W	0.57	
9540.00	90.090	359.540	7048.05	2234.89	2029.07	1506.98	40°22'40.002"N	104°44'19.331"W	0.16	
9634.00	90.060	359.910	7047.93	2327.73	2123.07	1506.53	40°22'40.931"N	104°44'19.337"W	0.39	
9726.00	90.000	0.900	7047.88	2418.75	2215.07	1507.18	40°22'41.840"N	104°44'19.328"W	1.08	
9819.00	90.150	1.240	7047.76	2510.91	2308.05	1508.92	40°22'42.759"N	104°44'19.306"W	0.40	
9912.00	90.000	0.540	7047.64	2603.04	2401.04	1510.36	40°22'43.678"N	104°44'19.287"W	0.77	
10004.00	90.250	0.080	7047.44	2694.04	2493.04	1510.86	40°22'44.587"N	104°44'19.281"W	0.57	
10099.00	90.000	359.160	7047.23	2787.83	2588.03	1510.23	40°22'45.526"N	104°44'19.289"W	1.00	
10192.00	90.030	0.450	7047.20	2879.69	2681.03	1509.92	40°22'46.445"N	104°44'19.293"W	1.39	
10284.00	89.970	1.090	7047.20	2970.80	2773.02	1511.15	40°22'47.354"N	104°44'19.277"W	0.70	
10378.00	90.000	3.160	7047.23	3064.17	2866.95	1514.64	40°22'48.282"N	104°44'19.232"W	2.20	
10474.00	90.220	4.400	7047.04	3159.80	2962.74	1520.97	40°22'49.228"N	104°44'19.150"W	1.31	
10568.00	89.880	4.200	7046.96	3253.52	3056.48	1528.01	40°22'50.155"N	104°44'19.059"W	0.42	
10661.00	90.060	1.700	7047.01	3346.03	3149.35	1532.80	40°22'51.072"N	104°44'18.997"W	2.70	
10755.00	90.890	1.020	7046.23	3439.25	3243.32	1535.03	40°22'52.001"N	104°44'18.968"W	1.14	
10849.00	90.120	357.750	7045.40	3531.97	3337.29	1534.02	40°22'52.930"N	104°44'18.981"W	3.57	
10941.00	90.000	356.750	7045.31	3622.12	3429.19	1529.61	40°22'53.838"N	104°44'19.038"W	1.09	
11034.00	90.180	357.030	7045.16	3713.13	3522.05	1524.56	40°22'54.755"N	104°44'19.103"W	0.36	
11128.00	89.970	357.190	7045.04	3805.20	3615.93	1519.82	40°22'55.683"N	104°44'19.164"W	0.28	
11221.00	90.060	356.820	7045.01	3896.25	3708.80	1514.96	40°22'56.601"N	104°44'19.227"W	0.41	
11314.00	90.120	357.010	7044.87	3987.27	3801.67	1509.96	40°22'57.518"N	104°44'19.291"W	0.21	
11409.00	90.030	358.320	7044.74	4080.49	3896.59	1506.09	40°22'58.456"N	104°44'19.341"W	1.38	
11501.00	90.060	358.190	7044.67	4170.95	3988.54	1503.29	40°22'59.365"N	104°44'19.377"W	0.15	
11593.00	90.090	358.800	7044.55	4261.47	4080.51	1500.87	40°23'00.274"N	104°44'19.408"W	0.66	
11689.00	90.060	355.240	7044.42	4355.45	4176.37	1495.88	40°23'01.221"N	104°44'19.473"W	3.71	
11783.00	90.090	353.100	7044.30	4446.42	4269.87	1486.33	40°23'02.145"N	104°44'19.596"W	2.28	
11878.00	90.060	356.080	7044.18	4538.51	4364.44	1477.38	40°23'03.080"N	104°44'19.712"W	3.14	
11973.00	90.060	357.700	7044.08	4631.48	4459.30	1472.22	40°23'04.017"N	104°44'19.778"W	1.71	
12067.00	90.060	0.640	7043.98	4724.16	4553.28	1470.86	40°23'04.946"N	104°44'19.796"W	3.13	
12161.00	90.030	2.240	7043.90	4817.39	4647.24	1473.22	40°23'05.874"N	104°44'19.765"W	1.70	
12254.00	90.060	2.290	7043.83	4909.79	4740.17	1476.90	40°23'06.792"N	104°44'19.718"W	0.06	
12347.00	90.090	1.140	7043.71	5002.09	4833.13	1479.68	40°23'07.711"N	104°44'19.682"W	1.24	
12440.00	90.090	359.840	7043.56	5094.12	4926.12	1480.48	40°23'08.630"N	104°44'19.671"W	1.40	

# Actual Wellpath Report

EVANS 24N-14B-L AWP

Page 5 of 7

## REFERENCE WELLPATH IDENTIFICATION

Operator	SYNERGY RESOURCES CORPORATION	Slot	SLOT#22 EVANS 24N-14B-L (2025'FNL & 2574'FEL SEC 26)
Area	COLORADO	Well	EVANS 24N-14B-L
Field	WELD COUNTY (NAD83, TRUE NORTH)	Wellbore	EVANS 24N-14B-L AWP
Facility	SEC.26-T05N-R66W		

## WELLPATH DATA (184 stations)

MD [ft]	Inclination [°]	Azimuth [°]	TVD [ft]	Vert Sect [ft]	North [ft]	East [ft]	Latitude	Longitude	DLS [°/100ft]	Comments
12535.00	90.090	358.670	7043.41	5187.81	5021.11	1479.24	40°23'09.569"N	104°44'19.687"W	1.23	
12628.00	90.120	358.240	7043.24	5279.31	5114.08	1476.73	40°23'10.487"N	104°44'19.720"W	0.46	
12721.00	90.090	358.500	7043.07	5370.79	5207.04	1474.09	40°23'11.406"N	104°44'19.754"W	0.28	
12816.00	90.120	358.270	7042.90	5464.23	5302.00	1471.41	40°23'12.344"N	104°44'19.788"W	0.24	
12909.00	90.090	359.370	7042.73	5555.84	5394.98	1469.50	40°23'13.263"N	104°44'19.813"W	1.18	
13003.00	90.120	359.590	7042.56	5648.61	5488.98	1468.64	40°23'14.192"N	104°44'19.824"W	0.24	
13097.00	90.060	357.660	7042.41	5741.14	5582.95	1466.39	40°23'15.120"N	104°44'19.853"W	2.05	
13190.00	90.030	356.010	7042.34	5832.13	5675.80	1461.25	40°23'16.038"N	104°44'19.919"W	1.77	
13283.00	90.150	357.290	7042.19	5923.05	5768.64	1455.82	40°23'16.955"N	104°44'19.989"W	1.38	
13376.00	90.060	1.830	7042.02	6014.83	5861.61	1455.11	40°23'17.874"N	104°44'19.998"W	4.88	
13470.00	90.090	3.900	7041.90	6108.33	5955.49	1459.80	40°23'18.802"N	104°44'19.938"W	2.20	
13562.00	90.120	2.390	7041.73	6199.89	6047.35	1464.85	40°23'19.709"N	104°44'19.872"W	1.64	
13655.00	90.030	1.460	7041.61	6292.23	6140.29	1467.97	40°23'20.628"N	104°44'19.832"W	1.00	
13748.00	90.060	1.540	7041.53	6384.48	6233.26	1470.41	40°23'21.547"N	104°44'19.800"W	0.09	
13841.00	89.940	0.900	7041.53	6476.68	6326.24	1472.39	40°23'22.465"N	104°44'19.775"W	0.70	
13936.00	90.030	1.130	7041.56	6570.81	6421.23	1474.07	40°23'23.404"N	104°44'19.753"W	0.26	
14028.00	90.150	0.990	7041.41	6661.98	6513.21	1475.77	40°23'24.313"N	104°44'19.731"W	0.20	
14120.00	90.120	0.800	7041.20	6753.11	6605.20	1477.21	40°23'25.222"N	104°44'19.712"W	0.21	
14215.00	90.060	0.760	7041.05	6847.19	6700.19	1478.50	40°23'26.161"N	104°44'19.695"W	0.08	
14307.00	90.150	0.580	7040.88	6938.28	6792.18	1479.58	40°23'27.070"N	104°44'19.681"W	0.22	
14401.00	90.090	0.680	7040.68	7031.33	6886.18	1480.61	40°23'27.998"N	104°44'19.668"W	0.12	
14494.00	90.060	0.160	7040.56	7123.35	6979.17	1481.30	40°23'28.917"N	104°44'19.659"W	0.56	
14588.00	90.150	359.790	7040.39	7216.25	7073.17	1481.25	40°23'29.846"N	104°44'19.660"W	0.41	
14682.00	90.090	359.010	7040.19	7309.00	7167.17	1480.27	40°23'30.775"N	104°44'19.672"W	0.83	
14776.00	90.060	357.600	7040.07	7401.43	7261.12	1477.49	40°23'31.704"N	104°44'19.708"W	1.50	
14870.00	90.090	359.910	7039.95	7494.00	7355.10	1475.45	40°23'32.632"N	104°44'19.734"W	2.46	
14966.00	90.060	1.680	7039.82	7589.07	7451.08	1476.78	40°23'33.581"N	104°44'19.717"W	1.84	
15059.00	90.090	1.270	7039.70	7681.32	7544.05	1479.17	40°23'34.499"N	104°44'19.686"W	0.44	
15151.00	90.030	1.160	7039.60	7772.52	7636.03	1481.12	40°23'35.408"N	104°44'19.661"W	0.14	
15244.00	90.120	0.940	7039.48	7864.68	7729.01	1482.83	40°23'36.327"N	104°44'19.639"W	0.26	
15337.00	90.060	2.400	7039.33	7956.97	7821.97	1485.54	40°23'37.246"N	104°44'19.604"W	1.57	
15430.00	90.000	2.440	7039.29	8049.40	7914.89	1489.47	40°23'38.164"N	104°44'19.553"W	0.08	
15524.00	90.060	4.000	7039.24	8142.96	8008.74	1494.75	40°23'39.091"N	104°44'19.485"W	1.66	
15617.00	90.060	2.150	7039.14	8235.49	8101.60	1499.73	40°23'40.009"N	104°44'19.420"W	1.99	
15710.00	90.150	358.910	7038.97	8327.52	8194.58	1500.59	40°23'40.928"N	104°44'19.409"W	3.49	
15804.00	90.060	358.180	7038.80	8420.03	8288.55	1498.21	40°23'41.856"N	104°44'19.440"W	0.78	
15897.00	90.150	357.610	7038.63	8511.37	8381.49	1494.79	40°23'42.775"N	104°44'19.484"W	0.62	
15990.00	90.120	357.580	7038.41	8602.61	8474.41	1490.89	40°23'43.693"N	104°44'19.534"W	0.05	
16084.00	90.120	357.440	7038.21	8694.80	8568.32	1486.80	40°23'44.621"N	104°44'19.587"W	0.15	
16177.00	90.030	357.690	7038.09	8786.03	8661.23	1482.85	40°23'45.539"N	104°44'19.638"W	0.29	
16272.00	90.090	357.120	7037.99	8879.17	8756.14	1478.55	40°23'46.477"N	104°44'19.693"W	0.60	
16366.00	90.090	356.910	7037.84	8971.20	8850.01	1473.66	40°23'47.404"N	104°44'19.756"W	0.22	
16459.00	90.250	356.520	7037.56	9062.16	8942.86	1468.33	40°23'48.322"N	104°44'19.825"W	0.45	
16553.00	90.150	355.830	7037.24	9153.90	9036.64	1462.06	40°23'49.249"N	104°44'19.906"W	0.74	
16648.00	90.060	356.490	7037.06	9246.61	9131.43	1455.70	40°23'50.185"N	104°44'19.988"W	0.70	

## REFERENCE WELLPATH IDENTIFICATION

Operator	SYNERGY RESOURCES CORPORATION	Slot	SLOT#22 EVANS 24N-14B-L (2025'FNL & 2574'FEL SEC 26)
Area	COLORADO	Well	EVANS 24N-14B-L
Field	WELD COUNTY (NAD83,TRUE NORTH)	Wellbore	EVANS 24N-14B-L AWB
Facility	SEC.26-T05N-R66W		

## WELLPATH DATA (184 stations)

MD [ft]	Inclination [°]	Azimuth [°]	TVD [ft]	Vert Sect [ft]	North [ft]	East [ft]	Latitude	Longitude	DLS [°/100ft]	Comments
16740.00	90.150	358.030	7036.89	9336.76	9223.32	1451.30	40°23'51.093"N	104°44'20.045"W	1.68	
16832.00	90.090	359.980	7036.70	9427.42	9315.30	1449.70	40°23'52.002"N	104°44'20.066"W	2.12	
16915.00	90.150	1.820	7036.53	9509.64	9398.29	1451.00	40°23'52.822"N	104°44'20.049"W	2.22	LAST BHI MWD SURVEY (2144'FSL & 1100'FEL,SEC.14)
16939.00	90.150	1.820	7036.46	9533.46	9422.28	1451.77	40°23'53.059"N	104°44'20.039"W	0.00	PROJ TO BIT (2168'FSL & 1099'FEL,SEC.14)

## HOLE & CASING SECTIONS - Ref Wellbore: EVANS 24N-14B-L AWB Ref Wellpath: EVANS 24N-14B-L AWP

String/Diameter	Start MD [ft]	End MD [ft]	Interval [ft]	Start TVD [ft]	End TVD [ft]	Start N/S [ft]	Start E/W [ft]	End N/S [ft]	End E/W [ft]
9.625in Casing	0.00	1769.00	1769.00	0.00	1767.53	0.00	0.00	-39.58	-12.46

## TARGETS

Name	TVD [ft]	North [ft]	East [ft]	Grid East [US ft]	Grid North [US ft]	Latitude	Longitude	Shape
SEC.14-T05N-R66W	0.00	159.29	-424.38	3210180.70	1379489.50	40°22'21.526"N	104°44'44.286"W	polygon
SEC.23-T05N-R66W	0.00	159.29	-424.38	3210180.70	1379489.50	40°22'21.526"N	104°44'44.286"W	polygon
SEC.26-T05N-R66W NORTH HALF	0.00	159.29	-424.38	3210180.70	1379489.50	40°22'21.526"N	104°44'44.286"W	polygon
SEC.26-T05N-R66W SOUTH HALF	0.00	159.29	-424.38	3210180.70	1379489.50	40°22'21.526"N	104°44'44.286"W	polygon
EVANS 24N-14B-L BHL REV-2 ON PLAT (NIO-B, 2171'FSL & 1047'FEL SEC 14)	7038.90	9425.19	1503.77	3212029.71	1388771.10	40°23'53.088"N	104°44'19.367"W	point
EVANS 24N-14B-L BHL REV-1 ON PLAT (NIO-B, 2171'FSL & 1047'FEL SEC 14)	7047.78	9425.19	1503.77	3212029.71	1388771.10	40°23'53.088"N	104°44'19.367"W	point
SEC.14-T05N-R66W 460 SETBACK	7185.00	159.29	-424.38	3210180.70	1379489.50	40°22'21.526"N	104°44'44.286"W	polygon
SEC.14-T05N-R66W HALF 460' SETBACK	7185.00	159.29	-424.38	3210180.70	1379489.50	40°22'21.526"N	104°44'44.286"W	polygon
SEC.23-T05N-R66W 460' SETBACK	7185.00	159.29	-424.38	3210180.70	1379489.50	40°22'21.526"N	104°44'44.286"W	polygon
SEC.26-T05N-R66W 460' SETBACK	7185.00	159.29	-424.38	3210180.70	1379489.50	40°22'21.526"N	104°44'44.286"W	polygon

## WELLPATH COMPOSITION - Ref Wellbore: EVANS 24N-14B-L AWB Ref Wellpath: EVANS 24N-14B-L AWP

Start MD [ft]	End MD [ft]	Positional Uncertainty Model	Log Name/Comment	Wellbore
0.00	1720.00	ISCWSA MWD, Rev. 4 (Standard)	PRECISION DRILLING MWD SURVEYS FROM SYNERGY <154-1720>	EVANS 24N-14B-L AWB
1720.00	16915.00	Custom BHI AutoTrak Curve (Axial Corr, Short spacing) (Rockies 0.03Gt model)	BHI ATC AXIAL, SHORT, ROCKIES GT 8 1/2 <1779'-16915'>	EVANS 24N-14B-L AWB
16915.00	16939.00	Blind Drilling (std)	Projection to bit	EVANS 24N-14B-L AWB



REFERENCE WELLPATH IDENTIFICATION			
Operator	SYNERGY RESOURCES CORPORATION	Slot	SLOT#22 EVANS 24N-14B-L (2025'FNL & 2574'FEL SEC 26)
Area	COLORADO	Well	EVANS 24N-14B-L
Field	WELD COUNTY (NAD83,TRUE NORTH)	Wellbore	EVANS 24N-14B-L AWB
Facility	SEC.26-T05N-R66W		

WELLPATH COMMENTS				
MD [ft]	Inclination [°]	Azimuth [°]	TVD [ft]	Comment
1720.00	0.260	202.190	1718.53	TIED IN TO SURFACE SURVEY
7764.00	90.000	359.850	7046.22	LANDING POINT (1771'FNL & 1042'FEL,SEC.26)
16915.00	90.150	1.820	7036.53	LAST BHI MWD SURVEY (2144'FSL & 1100'FEL,SEC.14)
16939.00	90.150	1.820	7036.46	PROJ TO BIT (2168'FSL & 1099'FEL,SEC.14)