



SRC ENERGY

Operator: SRC Energy
Well Name: Lindblad 20-23
Legal: SWNW, Section 20, Township 6N, Range 66W
Location: Weld County, CO
API: 05-123-22796

Deepest Water Well
Within 1 Mile = 600'





Wellbore History

Spud Date: 6/30/2005
Surf Csg: 8.625", 24# @ 660' – 307 sx
Prod Csg: 4.5", 11.6# @ 7300' – 150 sx
TOC: 6366' (CBL)
Perfs: NB-CD: 6974'–6994'

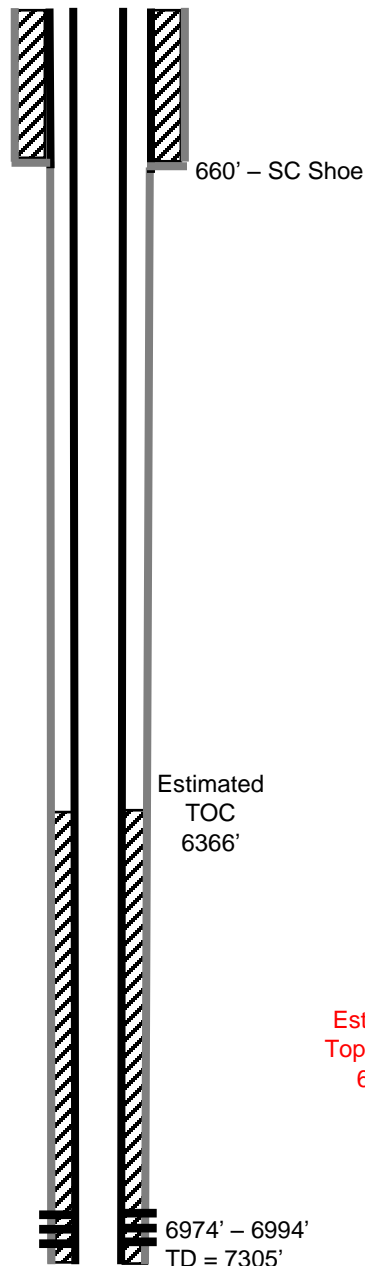
P&A Procedure

Set CIBP @ 6899'
Set 26 sx on top of CIBP (270' plug)
Perf @ 2500'
Set CICR @ 2400'
Circ 72 sx through CICR
Set 10 sx on top of CICR (132' plug)
Cut Casing @ 760'
Pmp 313 sx @ 810' to surface

Key

-  Existing Cement Coverage
-  CICR
-  Cement Pumped
-  CIBP

Current



Proposed

