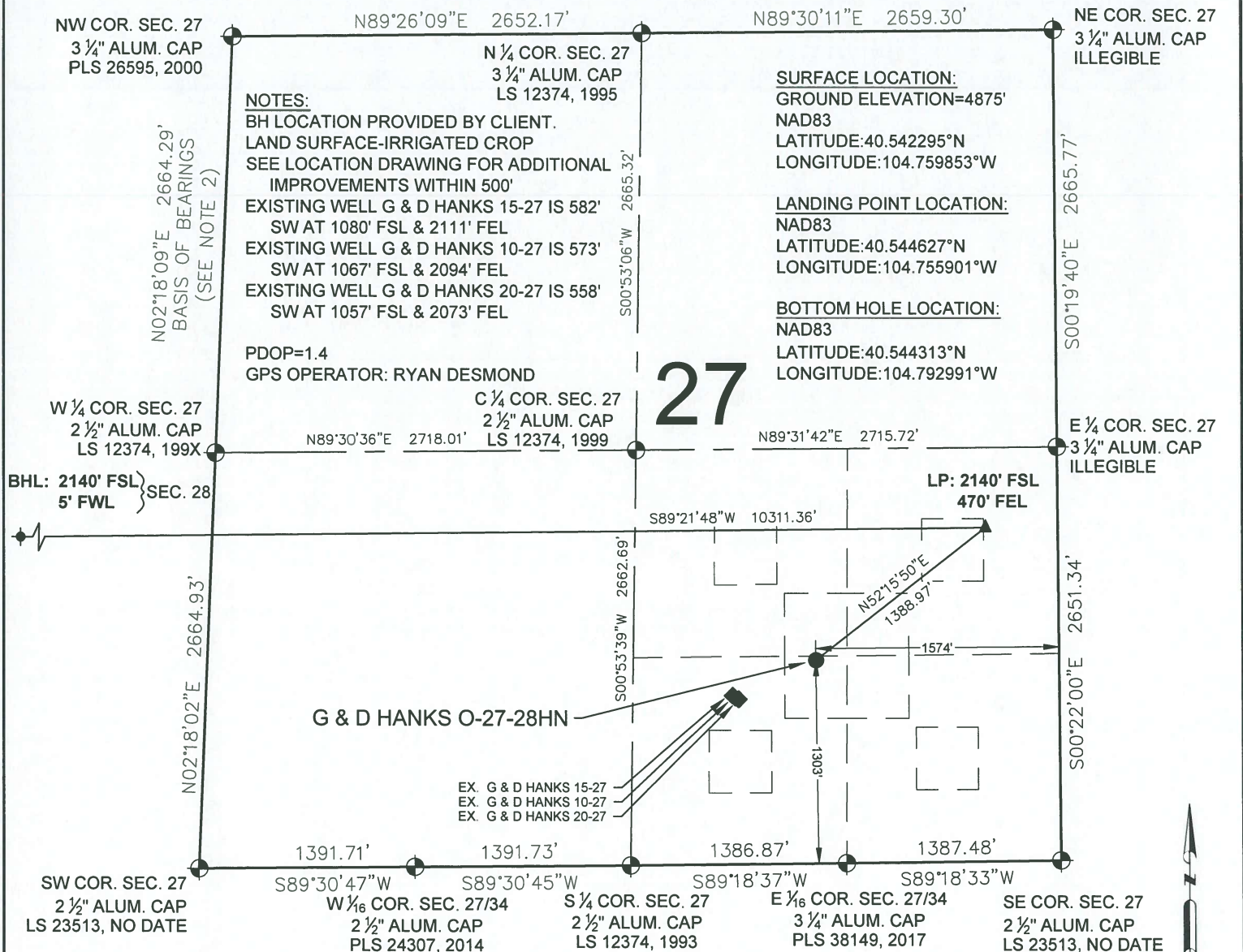
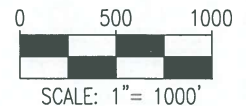
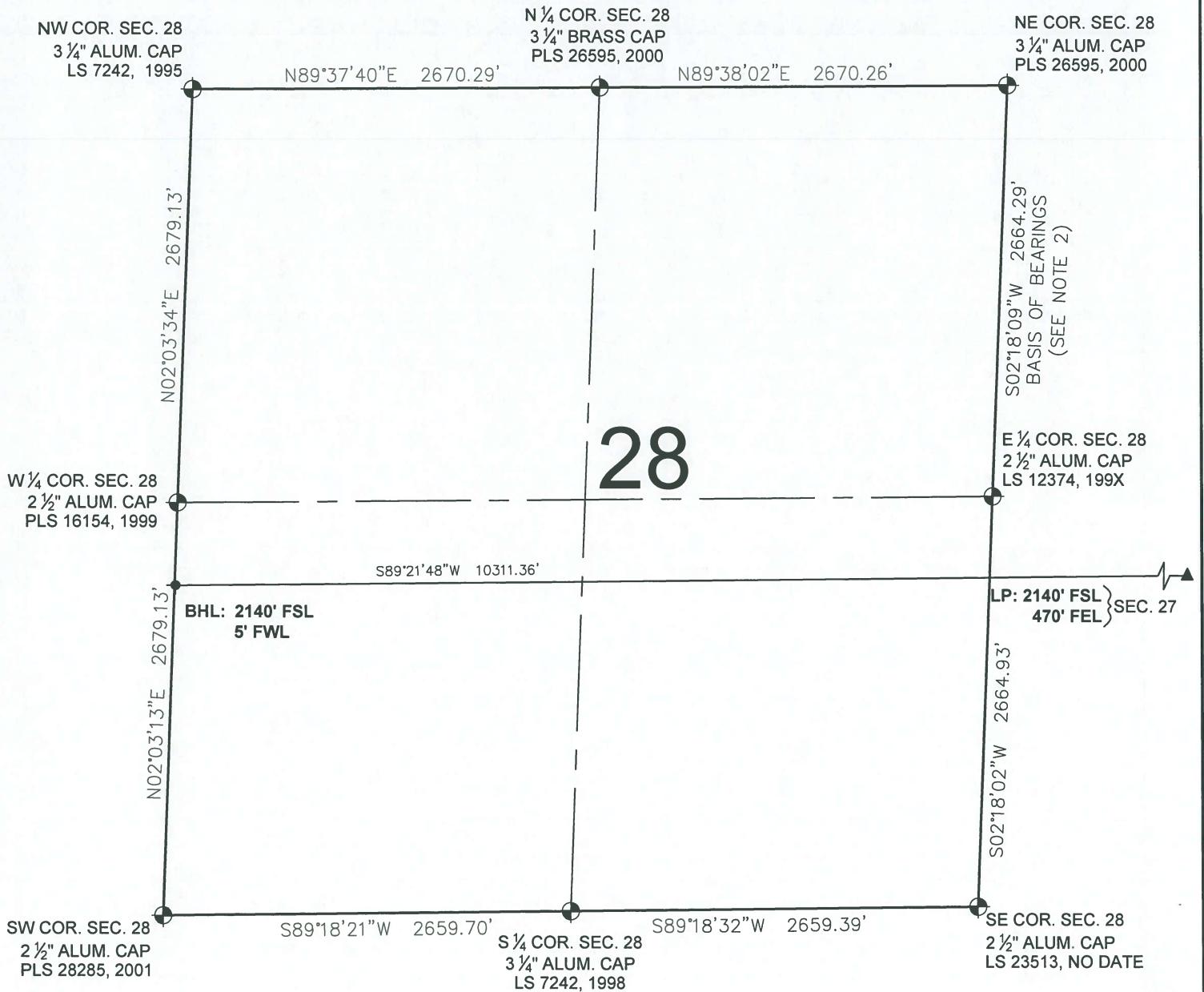


G & D HANKS O-27-28HN WELL LOCATION CERTIFICATE



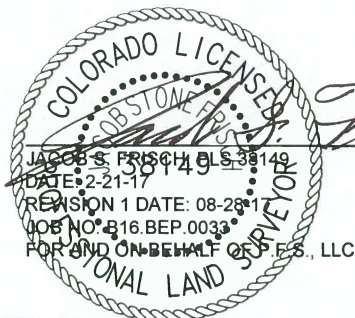
SHEET 1 OF 2

G & D HANKS O-27-28HN WELL LOCATION CERTIFICATE



LEGEND

- = EXISTING MONUMENT ◆ = BOTTOM HOLE
- = CALCULATED POSITION ▲ = LANDING POINT
- = PROPOSED WELL LP = LANDING POINT
- ◆ = EXISTING WELL BHL = BOTTOM HOLE LOCATION



SHEET 2 OF 2



FIELD DATE:
08-18-17

DRAWING DATE:
08-24-17

BY:
DJP

CHECKED BY:
KAD

WELL NAME:
G & D HANKS O-27-28HN

SURFACE LOCATION:
SW 1/4 SE 1/4 SEC. 27, T7N, R66W, 6TH P.M.
WELD COUNTY, COLORADO

PREPARED FOR:

