

# Clear Creek Resource Partners

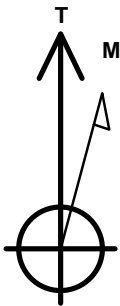
Well Name: **Salt Ranch Fee 502-1807H**  
 Surface Location: Salt Ranch Fee 1807H East Pad Sec.18-T11N-R64W  
 North American Datum 1983 , US State Plane 1983, Colorado Northern Zone  
 Ground Elevation: 5603.0

+N/-S	+E/-W	Northing	Easting	Latitude	Longitude	Slot
0.0	0.0	1577348.00	3253040.56	40.914603	-104.584484	

Original Well Elev WELL @ 5626.0ft (Original Well Elev)

## WELLBORE TARGET DETAILS

Name	TVD	+N/-S	+E/-W	Shape
SHL 366'FSL, 1068'FEL, SEC.18	1.0	0.0	0.0	Point
BHL 300'FNL, 1342'FEL, SEC.7	8198.0	9847.2	-345.3	Point
WP (502-1807H)	8213.0	4896.1	-4.1	Point
LPL 735'FSL, 1365'FEL, SEC.18	8227.0	361.8	-272.2	Point



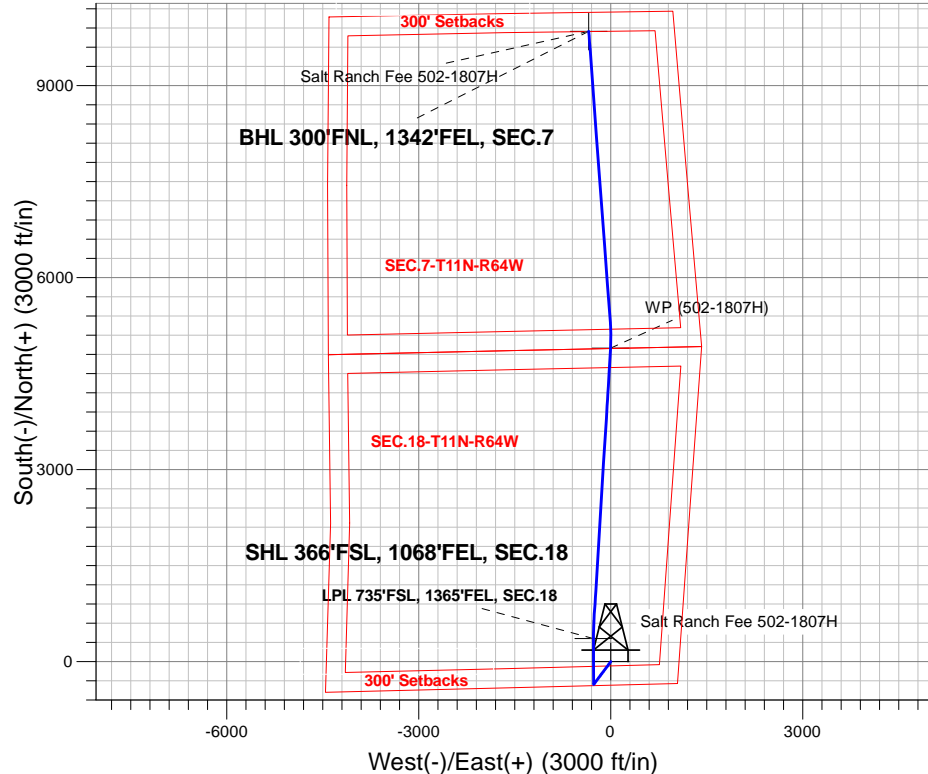
Azimuths to True North  
 Magnetic North: 7.95°

Magnetic Field  
 Strength: 52743.1snT  
 Dip Angle: 67.27°  
 Date: 10/12/2017  
 Model: IGRF2010

Salt Ranch Fee 1807H East Pad Sec.18-T11N-R64W  
 Salt Ranch Fee 502-1807H  
 Plan #1 (9-26-17)  
 11:16, October 12 2017

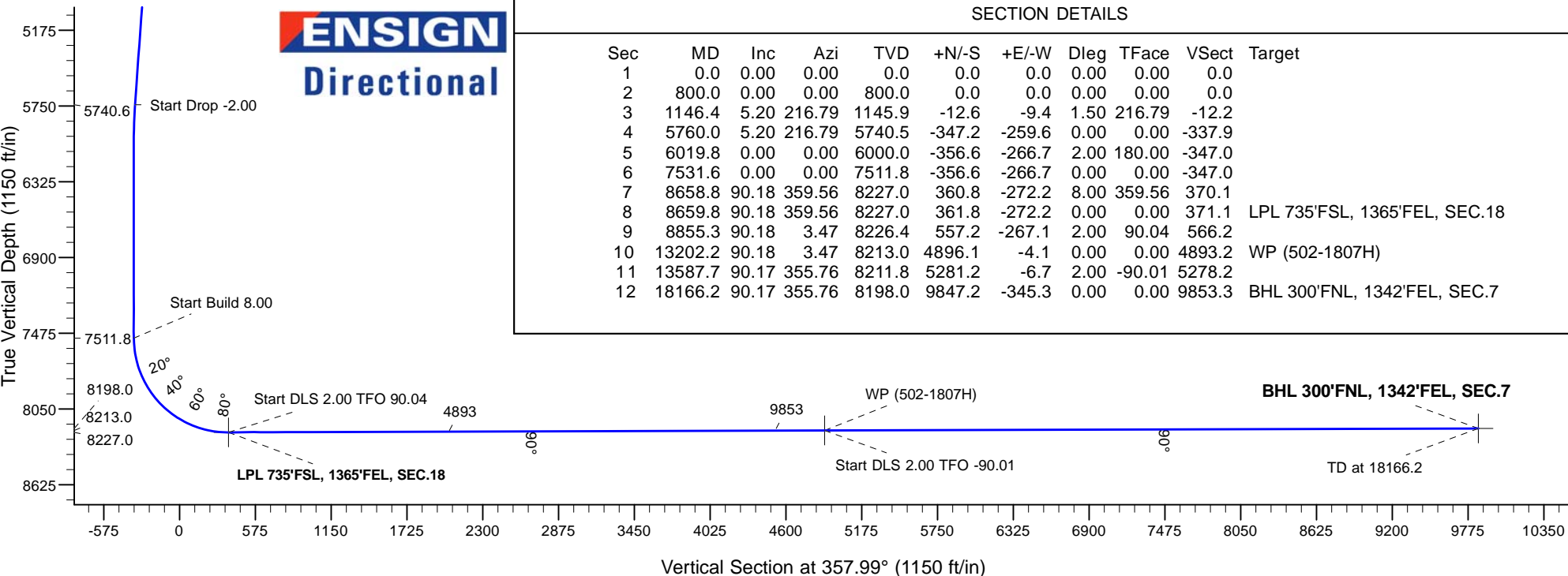
## ANNOTATIONS

TVD	MD	Annotation
800.0	800.0	KOP - Start Build 1.50
5740.5	5760.0	Start Drop -2.00
7511.8	7531.6	Start Build 8.00
8227.0	8659.8	Start DLS 2.00 TFO 90.04
8213.0	13202.2	Start DLS 2.00 TFO -90.01
8198.0	18166.2	TD at 18166.2



## SECTION DETAILS

Sec	MD	Inc	Azi	TVD	+N/-S	+E/-W	Dleg	TFace	Vsect	Target
1	0.0	0.00	0.00	0.0	0.0	0.0	0.00	0.00	0.0	
2	800.0	0.00	0.00	800.0	0.0	0.0	0.00	0.00	0.0	
3	1146.4	5.20	216.79	1145.9	-12.6	-9.4	1.50	216.79	-12.2	
4	5760.0	5.20	216.79	5740.5	-347.2	-259.6	0.00	0.00	-337.9	
5	6019.8	0.00	0.00	6000.0	-356.6	-266.7	2.00	180.00	-347.0	
6	7531.6	0.00	0.00	7511.8	-356.6	-266.7	0.00	0.00	-347.0	
7	8658.8	90.18	359.56	8227.0	360.8	-272.2	8.00	359.56	370.1	
8	8659.8	90.18	359.56	8227.0	361.8	-272.2	0.00	0.00	371.1	LPL 735'FSL, 1365'FEL, SEC.18
9	8855.3	90.18	3.47	8226.4	557.2	-267.1	2.00	90.04	566.2	
10	13202.2	90.18	3.47	8213.0	4896.1	-4.1	0.00	0.00	4893.2	WP (502-1807H)
11	13587.7	90.17	355.76	8211.8	5281.2	-6.7	2.00	-90.01	5278.2	
12	18166.2	90.17	355.76	8198.0	9847.2	-345.3	0.00	0.00	9853.3	BHL 300'FNL, 1342'FEL, SEC.7





## **Clear Creek Resource Partners**

**SEC.18-T11N-R64W**

**Salt Ranch Fee 1807H East Pad Sec.18-T11N-R64W**

**Salt Ranch Fee 502-1807H**

**Wellbore #1**

**Plan: Plan #1 (9-26-17)**

## **Standard Planning Report**

**12 October, 2017**

<b>Database:</b>	US_EDM	<b>Local Co-ordinate Reference:</b>	Well Salt Ranch Fee 502-1807H
<b>Company:</b>	Clear Creek Resource Partners	<b>TVD Reference:</b>	WELL @ 5626.0ft (Original Well Elev)
<b>Project:</b>	SEC.18-T11N-R64W	<b>MD Reference:</b>	WELL @ 5626.0ft (Original Well Elev)
<b>Site:</b>	Salt Ranch Fee 1807H East Pad Sec.18-T11N-R64W	<b>North Reference:</b>	True
<b>Well:</b>	Salt Ranch Fee 502-1807H	<b>Survey Calculation Method:</b>	Minimum Curvature
<b>Wellbore:</b>	Wellbore #1		
<b>Design:</b>	Plan #1 (9-26-17)		

<b>Project</b>	SEC.18-T11N-R64W, Weld County, CO		
<b>Map System:</b>	US State Plane 1983	<b>System Datum:</b>	Mean Sea Level
<b>Geo Datum:</b>	North American Datum 1983		Using Well Reference Point
<b>Map Zone:</b>	Colorado Northern Zone		Using geodetic scale factor

<b>Site</b>	Salt Ranch Fee 1807H East Pad Sec.18-T11N-R64W				
<b>Site Position:</b>		<b>Northing:</b>	1,577,348.20 usft	<b>Latitude:</b>	40.914601
<b>From:</b>	Lat/Long	<b>Easting:</b>	3,253,130.67 usft	<b>Longitude:</b>	-104.584158
<b>Position Uncertainty:</b>	0.0 ft	<b>Slot Radius:</b>	13-3/16 "	<b>Grid Convergence:</b>	0.59 °

<b>Well</b>	Salt Ranch Fee 502-1807H					
<b>Well Position</b>	<b>+N/-S</b>	0.7 ft	<b>Northing:</b>	1,577,348.00 usft	<b>Latitude:</b>	40.914603
	<b>+E/-W</b>	-90.1 ft	<b>Easting:</b>	3,253,040.56 usft	<b>Longitude:</b>	-104.584484
<b>Position Uncertainty</b>		0.0 ft	<b>Wellhead Elevation:</b>	0.0 ft	<b>Ground Level:</b>	5,603.0 ft

<b>Wellbore</b>	Wellbore #1				
<b>Magnetics</b>	<b>Model Name</b>	<b>Sample Date</b>	<b>Declination</b> (°)	<b>Dip Angle</b> (°)	<b>Field Strength</b> (nT)
	IGRF2010	10/12/2017	7.95	67.27	52,743

<b>Design</b>	Plan #1 (9-26-17)			
<b>Audit Notes:</b>				
<b>Version:</b>	<b>Phase:</b>	PROTOTYPE	<b>Tie On Depth:</b>	0.0
<b>Vertical Section:</b>	<b>Depth From (TVD)</b> (ft)	<b>+N/-S</b> (ft)	<b>+E/-W</b> (ft)	<b>Direction</b> (°)
	0.0	0.0	0.0	357.99

Plan Sections										
Measured Depth (ft)	Inclination (°)	Azimuth (°)	Vertical Depth (ft)	+N/-S (ft)	+E/-W (ft)	Dogleg Rate (°/100usft)	Build Rate (°/100usft)	Turn Rate (°/100usft)	TFO (°)	Target
0.0	0.00	0.00	0.0	0.0	0.0	0.00	0.00	0.00	0.00	
800.0	0.00	0.00	800.0	0.0	0.0	0.00	0.00	0.00	0.00	
1,146.4	5.20	216.79	1,145.9	-12.6	-9.4	1.50	1.50	0.00	216.79	
5,760.0	5.20	216.79	5,740.5	-347.2	-259.6	0.00	0.00	0.00	0.00	
6,019.8	0.00	0.00	6,000.0	-356.6	-266.7	2.00	-2.00	0.00	180.00	
7,531.6	0.00	0.00	7,511.8	-356.6	-266.7	0.00	0.00	0.00	0.00	
8,658.8	90.18	359.56	8,227.0	360.8	-272.2	8.00	8.00	0.00	359.56	
8,659.8	90.18	359.56	8,227.0	361.8	-272.2	0.00	0.00	0.00	0.00	LPL 735'FSL, 1365'FE
8,855.3	90.18	3.47	8,226.4	557.2	-267.1	2.00	0.00	2.00	90.04	
13,202.2	90.18	3.47	8,213.0	4,896.1	-4.1	0.00	0.00	0.00	0.00	WP (502-1807H)
13,587.7	90.17	355.76	8,211.8	5,281.2	-6.7	2.00	0.00	-2.00	-90.01	
18,166.2	90.17	355.76	8,198.0	9,847.2	-345.3	0.00	0.00	0.00	0.00	BHL 300'FNL, 1342'F

<b>Database:</b>	US_EDM	<b>Local Co-ordinate Reference:</b>	Well Salt Ranch Fee 502-1807H
<b>Company:</b>	Clear Creek Resource Partners	<b>TVD Reference:</b>	WELL @ 5626.0ft (Original Well Elev)
<b>Project:</b>	SEC.18-T11N-R64W	<b>MD Reference:</b>	WELL @ 5626.0ft (Original Well Elev)
<b>Site:</b>	Salt Ranch Fee 1807H East Pad Sec.18-T11N-R64W	<b>North Reference:</b>	True
<b>Well:</b>	Salt Ranch Fee 502-1807H	<b>Survey Calculation Method:</b>	Minimum Curvature
<b>Wellbore:</b>	Wellbore #1		
<b>Design:</b>	Plan #1 (9-26-17)		

Planned Survey										
Measured Depth (ft)	Inclination (°)	Azimuth (°)	Vertical Depth (ft)	+N/-S (ft)	+E/-W (ft)	Vertical Section (ft)	Dogleg Rate (°/100usft)	Build Rate (°/100usft)	Turn Rate (°/100usft)	
0.0	0.00	0.00	0.0	0.0	0.0	0.0	0.00	0.00	0.00	
1.0	0.00	0.00	1.0	0.0	0.0	0.0	0.00	0.00	0.00	
<b>SHL 366°FSL, 1068°FEL, SEC.18</b>										
100.0	0.00	0.00	100.0	0.0	0.0	0.0	0.00	0.00	0.00	
200.0	0.00	0.00	200.0	0.0	0.0	0.0	0.00	0.00	0.00	
300.0	0.00	0.00	300.0	0.0	0.0	0.0	0.00	0.00	0.00	
400.0	0.00	0.00	400.0	0.0	0.0	0.0	0.00	0.00	0.00	
500.0	0.00	0.00	500.0	0.0	0.0	0.0	0.00	0.00	0.00	
600.0	0.00	0.00	600.0	0.0	0.0	0.0	0.00	0.00	0.00	
700.0	0.00	0.00	700.0	0.0	0.0	0.0	0.00	0.00	0.00	
800.0	0.00	0.00	800.0	0.0	0.0	0.0	0.00	0.00	0.00	
<b>KOP - Start Build 1.50</b>										
900.0	1.50	216.79	900.0	-1.0	-0.8	-1.0	1.50	1.50	0.00	
1,000.0	3.00	216.79	999.9	-4.2	-3.1	-4.1	1.50	1.50	0.00	
1,100.0	4.50	216.79	1,099.7	-9.4	-7.1	-9.2	1.50	1.50	0.00	
1,146.4	5.20	216.79	1,145.9	-12.6	-9.4	-12.2	1.50	1.50	0.00	
1,200.0	5.20	216.79	1,199.3	-16.5	-12.3	-16.0	0.00	0.00	0.00	
1,300.0	5.20	216.79	1,298.9	-23.7	-17.7	-23.1	0.00	0.00	0.00	
1,400.0	5.20	216.79	1,398.5	-31.0	-23.2	-30.1	0.00	0.00	0.00	
1,500.0	5.20	216.79	1,498.1	-38.2	-28.6	-37.2	0.00	0.00	0.00	
1,600.0	5.20	216.79	1,597.7	-45.5	-34.0	-44.2	0.00	0.00	0.00	
1,700.0	5.20	216.79	1,697.3	-52.7	-39.4	-51.3	0.00	0.00	0.00	
1,800.0	5.20	216.79	1,796.8	-60.0	-44.9	-58.4	0.00	0.00	0.00	
1,900.0	5.20	216.79	1,896.4	-67.2	-50.3	-65.4	0.00	0.00	0.00	
2,000.0	5.20	216.79	1,996.0	-74.5	-55.7	-72.5	0.00	0.00	0.00	
2,100.0	5.20	216.79	2,095.6	-81.7	-61.1	-79.5	0.00	0.00	0.00	
2,200.0	5.20	216.79	2,195.2	-89.0	-66.5	-86.6	0.00	0.00	0.00	
2,300.0	5.20	216.79	2,294.8	-96.2	-72.0	-93.7	0.00	0.00	0.00	
2,400.0	5.20	216.79	2,394.4	-103.5	-77.4	-100.7	0.00	0.00	0.00	
2,500.0	5.20	216.79	2,494.0	-110.7	-82.8	-107.8	0.00	0.00	0.00	
2,600.0	5.20	216.79	2,593.6	-118.0	-88.2	-114.8	0.00	0.00	0.00	
2,700.0	5.20	216.79	2,693.1	-125.2	-93.7	-121.9	0.00	0.00	0.00	
2,800.0	5.20	216.79	2,792.7	-132.5	-99.1	-128.9	0.00	0.00	0.00	
2,900.0	5.20	216.79	2,892.3	-139.8	-104.5	-136.0	0.00	0.00	0.00	
3,000.0	5.20	216.79	2,991.9	-147.0	-109.9	-143.1	0.00	0.00	0.00	
3,100.0	5.20	216.79	3,091.5	-154.3	-115.4	-150.1	0.00	0.00	0.00	
3,200.0	5.20	216.79	3,191.1	-161.5	-120.8	-157.2	0.00	0.00	0.00	
3,300.0	5.20	216.79	3,290.7	-168.8	-126.2	-164.2	0.00	0.00	0.00	
3,400.0	5.20	216.79	3,390.3	-176.0	-131.6	-171.3	0.00	0.00	0.00	
3,500.0	5.20	216.79	3,489.9	-183.3	-137.1	-178.3	0.00	0.00	0.00	
3,600.0	5.20	216.79	3,589.4	-190.5	-142.5	-185.4	0.00	0.00	0.00	
3,700.0	5.20	216.79	3,689.0	-197.8	-147.9	-192.5	0.00	0.00	0.00	
3,800.0	5.20	216.79	3,788.6	-205.0	-153.3	-199.5	0.00	0.00	0.00	
3,900.0	5.20	216.79	3,888.2	-212.3	-158.8	-206.6	0.00	0.00	0.00	
4,000.0	5.20	216.79	3,987.8	-219.5	-164.2	-213.6	0.00	0.00	0.00	
4,100.0	5.20	216.79	4,087.4	-226.8	-169.6	-220.7	0.00	0.00	0.00	
4,200.0	5.20	216.79	4,187.0	-234.0	-175.0	-227.8	0.00	0.00	0.00	
4,300.0	5.20	216.79	4,286.6	-241.3	-180.5	-234.8	0.00	0.00	0.00	
4,400.0	5.20	216.79	4,386.2	-248.5	-185.9	-241.9	0.00	0.00	0.00	
4,500.0	5.20	216.79	4,485.7	-255.8	-191.3	-248.9	0.00	0.00	0.00	
4,600.0	5.20	216.79	4,585.3	-263.0	-196.7	-256.0	0.00	0.00	0.00	
4,700.0	5.20	216.79	4,684.9	-270.3	-202.2	-263.0	0.00	0.00	0.00	
4,800.0	5.20	216.79	4,784.5	-277.5	-207.6	-270.1	0.00	0.00	0.00	

<b>Database:</b>	US_EDM	<b>Local Co-ordinate Reference:</b>	Well Salt Ranch Fee 502-1807H
<b>Company:</b>	Clear Creek Resource Partners	<b>TVD Reference:</b>	WELL @ 5626.0ft (Original Well Elev)
<b>Project:</b>	SEC.18-T11N-R64W	<b>MD Reference:</b>	WELL @ 5626.0ft (Original Well Elev)
<b>Site:</b>	Salt Ranch Fee 1807H East Pad Sec.18-T11N-R64W	<b>North Reference:</b>	True
<b>Well:</b>	Salt Ranch Fee 502-1807H	<b>Survey Calculation Method:</b>	Minimum Curvature
<b>Wellbore:</b>	Wellbore #1		
<b>Design:</b>	Plan #1 (9-26-17)		

Planned Survey										
Measured Depth (ft)	Inclination (°)	Azimuth (°)	Vertical Depth (ft)	+N/-S (ft)	+E/-W (ft)	Vertical Section (ft)	Dogleg Rate (°/100usft)	Build Rate (°/100usft)	Turn Rate (°/100usft)	
4,900.0	5.20	216.79	4,884.1	-284.8	-213.0	-277.2	0.00	0.00	0.00	
5,000.0	5.20	216.79	4,983.7	-292.1	-218.4	-284.2	0.00	0.00	0.00	
5,100.0	5.20	216.79	5,083.3	-299.3	-223.9	-291.3	0.00	0.00	0.00	
5,200.0	5.20	216.79	5,182.9	-306.6	-229.3	-298.3	0.00	0.00	0.00	
5,300.0	5.20	216.79	5,282.5	-313.8	-234.7	-305.4	0.00	0.00	0.00	
5,400.0	5.20	216.79	5,382.0	-321.1	-240.1	-312.5	0.00	0.00	0.00	
5,500.0	5.20	216.79	5,481.6	-328.3	-245.5	-319.5	0.00	0.00	0.00	
5,600.0	5.20	216.79	5,581.2	-335.6	-251.0	-326.6	0.00	0.00	0.00	
5,700.0	5.20	216.79	5,680.8	-342.8	-256.4	-333.6	0.00	0.00	0.00	
5,760.0	5.20	216.79	5,740.6	-347.2	-259.6	-337.9	0.00	0.00	0.00	
<b>Start Drop -2.00</b>										
5,800.0	4.40	216.79	5,780.4	-349.9	-261.7	-340.5	2.00	-2.00	0.00	
5,900.0	2.40	216.79	5,880.2	-354.6	-265.2	-345.1	2.00	-2.00	0.00	
6,000.0	0.40	216.79	5,980.2	-356.5	-266.7	-347.0	2.00	-2.00	0.00	
6,019.8	0.00	0.00	6,000.0	-356.6	-266.7	-347.0	2.00	-2.00	0.00	
6,100.0	0.00	0.00	6,080.2	-356.6	-266.7	-347.0	0.00	0.00	0.00	
6,200.0	0.00	0.00	6,180.2	-356.6	-266.7	-347.0	0.00	0.00	0.00	
6,300.0	0.00	0.00	6,280.2	-356.6	-266.7	-347.0	0.00	0.00	0.00	
6,400.0	0.00	0.00	6,380.2	-356.6	-266.7	-347.0	0.00	0.00	0.00	
6,500.0	0.00	0.00	6,480.2	-356.6	-266.7	-347.0	0.00	0.00	0.00	
6,600.0	0.00	0.00	6,580.2	-356.6	-266.7	-347.0	0.00	0.00	0.00	
6,700.0	0.00	0.00	6,680.2	-356.6	-266.7	-347.0	0.00	0.00	0.00	
6,800.0	0.00	0.00	6,780.2	-356.6	-266.7	-347.0	0.00	0.00	0.00	
6,900.0	0.00	0.00	6,880.2	-356.6	-266.7	-347.0	0.00	0.00	0.00	
7,000.0	0.00	0.00	6,980.2	-356.6	-266.7	-347.0	0.00	0.00	0.00	
7,100.0	0.00	0.00	7,080.2	-356.6	-266.7	-347.0	0.00	0.00	0.00	
7,200.0	0.00	0.00	7,180.2	-356.6	-266.7	-347.0	0.00	0.00	0.00	
7,300.0	0.00	0.00	7,280.2	-356.6	-266.7	-347.0	0.00	0.00	0.00	
7,400.0	0.00	0.00	7,380.2	-356.6	-266.7	-347.0	0.00	0.00	0.00	
7,500.0	0.00	0.00	7,480.2	-356.6	-266.7	-347.0	0.00	0.00	0.00	
7,531.6	0.00	0.00	7,511.8	-356.6	-266.7	-347.0	0.00	0.00	0.00	
<b>Start Build 8.00</b>										
7,600.0	5.47	359.56	7,580.1	-353.3	-266.7	-343.8	8.00	8.00	0.00	
7,700.0	13.47	359.56	7,678.7	-336.9	-266.9	-327.3	8.00	8.00	0.00	
7,800.0	21.47	359.56	7,774.0	-306.9	-267.1	-297.4	8.00	8.00	0.00	
7,900.0	29.47	359.56	7,864.2	-263.9	-267.4	-254.4	8.00	8.00	0.00	
8,000.0	37.47	359.56	7,947.5	-208.8	-267.8	-199.3	8.00	8.00	0.00	
8,100.0	45.47	359.56	8,022.4	-142.7	-268.3	-133.2	8.00	8.00	0.00	
8,200.0	53.47	359.56	8,087.3	-66.7	-268.9	-57.2	8.00	8.00	0.00	
8,300.0	61.47	359.56	8,141.1	17.5	-269.6	27.0	8.00	8.00	0.00	
8,400.0	69.47	359.56	8,182.5	108.4	-270.3	117.8	8.00	8.00	0.00	
8,500.0	77.47	359.56	8,211.0	204.2	-271.0	213.6	8.00	8.00	0.00	
8,600.0	85.47	359.56	8,225.8	303.0	-271.8	312.4	8.00	8.00	0.00	
8,658.8	90.18	359.56	8,227.0	360.8	-272.2	370.1	8.00	8.00	0.00	
8,659.8	90.18	359.56	8,227.0	361.8	-272.2	371.1	0.00	0.00	0.00	
<b>Start DLS 2.00 TFO 90.04 - LPL 735°FSL, 1365°FEL, SEC.18</b>										
8,700.0	90.18	0.36	8,226.9	402.0	-272.3	411.3	2.00	0.00	2.00	
8,800.0	90.18	2.36	8,226.6	501.9	-269.9	511.1	2.00	0.00	2.00	
8,855.3	90.18	3.47	8,226.4	557.2	-267.1	566.2	2.00	0.00	2.00	
8,900.0	90.18	3.47	8,226.3	601.8	-264.4	610.7	0.00	0.00	0.00	
9,000.0	90.18	3.47	8,225.9	701.6	-258.3	710.2	0.00	0.00	0.00	
9,100.0	90.18	3.47	8,225.6	801.4	-252.3	809.8	0.00	0.00	0.00	
9,200.0	90.18	3.47	8,225.3	901.2	-246.2	909.3	0.00	0.00	0.00	

<b>Database:</b>	US_EDM	<b>Local Co-ordinate Reference:</b>	Well Salt Ranch Fee 502-1807H
<b>Company:</b>	Clear Creek Resource Partners	<b>TVD Reference:</b>	WELL @ 5626.0ft (Original Well Elev)
<b>Project:</b>	SEC.18-T11N-R64W	<b>MD Reference:</b>	WELL @ 5626.0ft (Original Well Elev)
<b>Site:</b>	Salt Ranch Fee 1807H East Pad Sec.18-T11N-R64W	<b>North Reference:</b>	True
<b>Well:</b>	Salt Ranch Fee 502-1807H	<b>Survey Calculation Method:</b>	Minimum Curvature
<b>Wellbore:</b>	Wellbore #1		
<b>Design:</b>	Plan #1 (9-26-17)		

Planned Survey									
Measured Depth (ft)	Inclination (°)	Azimuth (°)	Vertical Depth (ft)	+N/-S (ft)	+E/-W (ft)	Vertical Section (ft)	Dogleg Rate (°/100usft)	Build Rate (°/100usft)	Turn Rate (°/100usft)
9,300.0	90.18	3.47	8,225.0	1,001.0	-240.2	1,008.8	0.00	0.00	0.00
9,400.0	90.18	3.47	8,224.7	1,100.9	-234.1	1,108.4	0.00	0.00	0.00
9,500.0	90.18	3.47	8,224.4	1,200.7	-228.1	1,207.9	0.00	0.00	0.00
9,600.0	90.18	3.47	8,224.1	1,300.5	-222.0	1,307.5	0.00	0.00	0.00
9,700.0	90.18	3.47	8,223.8	1,400.3	-216.0	1,407.0	0.00	0.00	0.00
9,800.0	90.18	3.47	8,223.5	1,500.1	-209.9	1,506.6	0.00	0.00	0.00
9,900.0	90.18	3.47	8,223.2	1,599.9	-203.9	1,606.1	0.00	0.00	0.00
10,000.0	90.18	3.47	8,222.9	1,699.8	-197.8	1,705.7	0.00	0.00	0.00
10,100.0	90.18	3.47	8,222.6	1,799.6	-191.8	1,805.2	0.00	0.00	0.00
10,200.0	90.18	3.47	8,222.2	1,899.4	-185.7	1,904.7	0.00	0.00	0.00
10,300.0	90.18	3.47	8,221.9	1,999.2	-179.7	2,004.3	0.00	0.00	0.00
10,400.0	90.18	3.47	8,221.6	2,099.0	-173.6	2,103.8	0.00	0.00	0.00
10,500.0	90.18	3.47	8,221.3	2,198.8	-167.6	2,203.4	0.00	0.00	0.00
10,600.0	90.18	3.47	8,221.0	2,298.7	-161.5	2,302.9	0.00	0.00	0.00
10,700.0	90.18	3.47	8,220.7	2,398.5	-155.5	2,402.5	0.00	0.00	0.00
10,800.0	90.18	3.47	8,220.4	2,498.3	-149.4	2,502.0	0.00	0.00	0.00
10,900.0	90.18	3.47	8,220.1	2,598.1	-143.4	2,601.5	0.00	0.00	0.00
11,000.0	90.18	3.47	8,219.8	2,697.9	-137.4	2,701.1	0.00	0.00	0.00
11,100.0	90.18	3.47	8,219.5	2,797.7	-131.3	2,800.6	0.00	0.00	0.00
11,200.0	90.18	3.47	8,219.2	2,897.6	-125.3	2,900.2	0.00	0.00	0.00
11,300.0	90.18	3.47	8,218.9	2,997.4	-119.2	2,999.7	0.00	0.00	0.00
11,400.0	90.18	3.47	8,218.6	3,097.2	-113.2	3,099.3	0.00	0.00	0.00
11,500.0	90.18	3.47	8,218.2	3,197.0	-107.1	3,198.8	0.00	0.00	0.00
11,600.0	90.18	3.47	8,217.9	3,296.8	-101.1	3,298.3	0.00	0.00	0.00
11,700.0	90.18	3.47	8,217.6	3,396.6	-95.0	3,397.9	0.00	0.00	0.00
11,800.0	90.18	3.47	8,217.3	3,496.5	-89.0	3,497.4	0.00	0.00	0.00
11,900.0	90.18	3.47	8,217.0	3,596.3	-82.9	3,597.0	0.00	0.00	0.00
12,000.0	90.18	3.47	8,216.7	3,696.1	-76.9	3,696.5	0.00	0.00	0.00
12,100.0	90.18	3.47	8,216.4	3,795.9	-70.8	3,796.1	0.00	0.00	0.00
12,200.0	90.18	3.47	8,216.1	3,895.7	-64.8	3,895.6	0.00	0.00	0.00
12,300.0	90.18	3.47	8,215.8	3,995.5	-58.7	3,995.1	0.00	0.00	0.00
12,400.0	90.18	3.47	8,215.5	4,095.4	-52.7	4,094.7	0.00	0.00	0.00
12,500.0	90.18	3.47	8,215.2	4,195.2	-46.6	4,194.2	0.00	0.00	0.00
12,600.0	90.18	3.47	8,214.9	4,295.0	-40.6	4,293.8	0.00	0.00	0.00
12,700.0	90.18	3.47	8,214.5	4,394.8	-34.5	4,393.3	0.00	0.00	0.00
12,800.0	90.18	3.47	8,214.2	4,494.6	-28.5	4,492.9	0.00	0.00	0.00
12,900.0	90.18	3.47	8,213.9	4,594.4	-22.4	4,592.4	0.00	0.00	0.00
13,000.0	90.18	3.47	8,213.6	4,694.3	-16.4	4,691.9	0.00	0.00	0.00
13,100.0	90.18	3.47	8,213.3	4,794.1	-10.3	4,791.5	0.00	0.00	0.00
13,200.0	90.18	3.47	8,213.0	4,893.9	-4.3	4,891.0	0.00	0.00	0.00
13,202.2	90.18	3.47	8,213.0	4,896.1	-4.1	4,893.2	0.00	0.00	0.00
<b>Start DLS 2.00 TFO -90.01 - WP (502-1807H)</b>									
13,300.0	90.18	1.51	8,212.7	4,993.8	0.1	4,990.7	2.00	0.00	-2.00
13,400.0	90.18	359.51	8,212.4	5,093.8	1.0	5,090.6	2.00	0.00	-2.00
13,500.0	90.17	357.51	8,212.1	5,193.7	-1.6	5,190.6	2.00	0.00	-2.00
13,587.7	90.17	355.76	8,211.8	5,281.2	-6.7	5,278.2	2.00	0.00	-2.00
13,600.0	90.17	355.76	8,211.8	5,293.5	-7.7	5,290.6	0.00	0.00	0.00
13,700.0	90.17	355.76	8,211.5	5,393.3	-15.1	5,390.5	0.00	0.00	0.00
13,800.0	90.17	355.76	8,211.2	5,493.0	-22.4	5,490.4	0.00	0.00	0.00
13,900.0	90.17	355.76	8,210.9	5,592.7	-29.8	5,590.3	0.00	0.00	0.00
14,000.0	90.17	355.76	8,210.6	5,692.5	-37.2	5,690.3	0.00	0.00	0.00
14,100.0	90.17	355.76	8,210.3	5,792.2	-44.6	5,790.2	0.00	0.00	0.00
14,200.0	90.17	355.76	8,210.0	5,891.9	-52.0	5,890.1	0.00	0.00	0.00

<b>Database:</b>	US_EDM	<b>Local Co-ordinate Reference:</b>	Well Salt Ranch Fee 502-1807H
<b>Company:</b>	Clear Creek Resource Partners	<b>TVD Reference:</b>	WELL @ 5626.0ft (Original Well Elev)
<b>Project:</b>	SEC.18-T11N-R64W	<b>MD Reference:</b>	WELL @ 5626.0ft (Original Well Elev)
<b>Site:</b>	Salt Ranch Fee 1807H East Pad Sec.18-T11N-R64W	<b>North Reference:</b>	True
<b>Well:</b>	Salt Ranch Fee 502-1807H	<b>Survey Calculation Method:</b>	Minimum Curvature
<b>Wellbore:</b>	Wellbore #1		
<b>Design:</b>	Plan #1 (9-26-17)		

**Planned Survey**

Measured Depth (ft)	Inclination (°)	Azimuth (°)	Vertical Depth (ft)	+N/-S (ft)	+E/-W (ft)	Vertical Section (ft)	Dogleg Rate (°/100usft)	Build Rate (°/100usft)	Turn Rate (°/100usft)
14,300.0	90.17	355.76	8,209.7	5,991.6	-59.4	5,990.0	0.00	0.00	0.00
14,400.0	90.17	355.76	8,209.4	6,091.4	-66.8	6,090.0	0.00	0.00	0.00
14,500.0	90.17	355.76	8,209.1	6,191.1	-74.2	6,189.9	0.00	0.00	0.00
14,600.0	90.17	355.76	8,208.8	6,290.8	-81.6	6,289.8	0.00	0.00	0.00
14,700.0	90.17	355.76	8,208.5	6,390.5	-89.0	6,389.7	0.00	0.00	0.00
14,800.0	90.17	355.76	8,208.2	6,490.3	-96.4	6,489.6	0.00	0.00	0.00
14,900.0	90.17	355.76	8,207.9	6,590.0	-103.8	6,589.6	0.00	0.00	0.00
15,000.0	90.17	355.76	8,207.6	6,689.7	-111.2	6,689.5	0.00	0.00	0.00
15,100.0	90.17	355.76	8,207.3	6,789.4	-118.6	6,789.4	0.00	0.00	0.00
15,200.0	90.17	355.76	8,207.0	6,889.2	-126.0	6,889.3	0.00	0.00	0.00
15,300.0	90.17	355.76	8,206.7	6,988.9	-133.4	6,989.3	0.00	0.00	0.00
15,400.0	90.17	355.76	8,206.4	7,088.6	-140.8	7,089.2	0.00	0.00	0.00
15,500.0	90.17	355.76	8,206.0	7,188.3	-148.2	7,189.1	0.00	0.00	0.00
15,600.0	90.17	355.76	8,205.7	7,288.1	-155.6	7,289.0	0.00	0.00	0.00
15,700.0	90.17	355.76	8,205.4	7,387.8	-163.0	7,389.0	0.00	0.00	0.00
15,800.0	90.17	355.76	8,205.1	7,487.5	-170.4	7,488.9	0.00	0.00	0.00
15,900.0	90.17	355.76	8,204.8	7,587.2	-177.8	7,588.8	0.00	0.00	0.00
16,000.0	90.17	355.76	8,204.5	7,687.0	-185.1	7,688.7	0.00	0.00	0.00
16,100.0	90.17	355.76	8,204.2	7,786.7	-192.5	7,788.7	0.00	0.00	0.00
16,200.0	90.17	355.76	8,203.9	7,886.4	-199.9	7,888.6	0.00	0.00	0.00
16,300.0	90.17	355.76	8,203.6	7,986.1	-207.3	7,988.5	0.00	0.00	0.00
16,400.0	90.17	355.76	8,203.3	8,085.9	-214.7	8,088.4	0.00	0.00	0.00
16,500.0	90.17	355.76	8,203.0	8,185.6	-222.1	8,188.3	0.00	0.00	0.00
16,600.0	90.17	355.76	8,202.7	8,285.3	-229.5	8,288.3	0.00	0.00	0.00
16,700.0	90.17	355.76	8,202.4	8,385.0	-236.9	8,388.2	0.00	0.00	0.00
16,800.0	90.17	355.76	8,202.1	8,484.8	-244.3	8,488.1	0.00	0.00	0.00
16,900.0	90.17	355.76	8,201.8	8,584.5	-251.7	8,588.0	0.00	0.00	0.00
17,000.0	90.17	355.76	8,201.5	8,684.2	-259.1	8,688.0	0.00	0.00	0.00
17,100.0	90.17	355.76	8,201.2	8,783.9	-266.5	8,787.9	0.00	0.00	0.00
17,200.0	90.17	355.76	8,200.9	8,883.7	-273.9	8,887.8	0.00	0.00	0.00
17,300.0	90.17	355.76	8,200.6	8,983.4	-281.3	8,987.7	0.00	0.00	0.00
17,400.0	90.17	355.76	8,200.3	9,083.1	-288.7	9,087.7	0.00	0.00	0.00
17,500.0	90.17	355.76	8,200.0	9,182.8	-296.1	9,187.6	0.00	0.00	0.00
17,600.0	90.17	355.76	8,199.7	9,282.6	-303.5	9,287.5	0.00	0.00	0.00
17,700.0	90.17	355.76	8,199.4	9,382.3	-310.9	9,387.4	0.00	0.00	0.00
17,800.0	90.17	355.76	8,199.1	9,482.0	-318.3	9,487.4	0.00	0.00	0.00
17,900.0	90.17	355.76	8,198.8	9,581.8	-325.7	9,587.3	0.00	0.00	0.00
18,000.0	90.17	355.76	8,198.5	9,681.5	-333.1	9,687.2	0.00	0.00	0.00
18,100.0	90.17	355.76	8,198.2	9,781.2	-340.5	9,787.1	0.00	0.00	0.00
18,166.2	90.17	355.76	8,198.0	9,847.2	-345.3	9,853.3	0.00	0.00	0.00

TD at 18166.2 - BHL 300'FNL, 1342'FEL, SEC.7

<b>Database:</b>	US_EDM	<b>Local Co-ordinate Reference:</b>	Well Salt Ranch Fee 502-1807H
<b>Company:</b>	Clear Creek Resource Partners	<b>TVD Reference:</b>	WELL @ 5626.0ft (Original Well Elev)
<b>Project:</b>	SEC.18-T11N-R64W	<b>MD Reference:</b>	WELL @ 5626.0ft (Original Well Elev)
<b>Site:</b>	Salt Ranch Fee 1807H East Pad Sec.18-T11N-R64W	<b>North Reference:</b>	True
<b>Well:</b>	Salt Ranch Fee 502-1807H	<b>Survey Calculation Method:</b>	Minimum Curvature
<b>Wellbore:</b>	Wellbore #1		
<b>Design:</b>	Plan #1 (9-26-17)		

Design Targets									
Target Name - hit/miss target - Shape	Dip Angle (°)	Dip Dir. (°)	TVD (ft)	+N/-S (ft)	+E/-W (ft)	Northing (usft)	Easting (usft)	Latitude	Longitude
SHL 366'FSL, 1068'FEL - plan hits target center - Point	0.00	0.00	1.0	0.0	0.0	1,577,348.00	3,253,040.56	40.914603	-104.584484
BHL 300'FNL, 1342'FEL - plan hits target center - Point	0.00	0.00	8,198.0	9,847.2	-345.3	1,587,191.33	3,252,593.55	40.941630	-104.585734
WP (502-1807H) - plan hits target center - Point	0.00	0.00	8,213.0	4,896.1	-4.1	1,582,243.88	3,252,985.86	40.928041	-104.584499
LPL 735'FSL, 1365'FEL, - plan hits target center - Point	0.00	0.00	8,227.0	361.8	-272.2	1,577,706.98	3,252,764.59	40.915596	-104.585469

Plan Annotations				
Measured Depth (ft)	Vertical Depth (ft)	Local Coordinates		Comment
		+N/-S (ft)	+E/-W (ft)	
800.0	800.0	0.0	0.0	KOP - Start Build 1.50
5,760.0	5,740.5	-12.6	-9.4	Start Drop -2.00
7,531.6	7,511.8	-347.2	-259.6	Start Build 8.00
8,659.8	8,227.0	-356.6	-266.7	Start DLS 2.00 TFO 90.04
13,202.2	8,213.0	-356.6	-266.7	Start DLS 2.00 TFO -90.01
18,166.2	8,198.0	360.8	-272.2	TD at 18166.2



# Directional

## **Clear Creek Resource Partners**

**SEC.18-T11N-R64W**

**Salt Ranch Fee 1807H East Pad Sec.18-T11N-R64W**

**Salt Ranch Fee 502-1807H**

**Wellbore #1**

**Plan #1 (9-26-17)**

## **Anticollision Report**

**12 October, 2017**

<b>Company:</b>	Clear Creek Resource Partners	<b>Local Co-ordinate Reference:</b>	Well Salt Ranch Fee 502-1807H
<b>Project:</b>	SEC.18-T11N-R64W	<b>TVD Reference:</b>	WELL @ 5626.0ft (Original Well Elev)
<b>Reference Site:</b>	Salt Ranch Fee 1807H East Pad Sec.18-T11N-R64W	<b>MD Reference:</b>	WELL @ 5626.0ft (Original Well Elev)
<b>Site Error:</b>	0.0 ft	<b>North Reference:</b>	True
<b>Reference Well:</b>	Salt Ranch Fee 502-1807H	<b>Survey Calculation Method:</b>	Minimum Curvature
<b>Well Error:</b>	0.0 ft	<b>Output errors are at</b>	2.00 sigma
<b>Reference Wellbore</b>	Wellbore #1	<b>Database:</b>	US_EDM
<b>Reference Design:</b>	Plan #1 (9-26-17)	<b>Offset TVD Reference:</b>	Offset Datum

<b>Reference</b>	Plan #1 (9-26-17)		
<b>Filter type:</b>	NO GLOBAL FILTER: Using user defined selection & filtering criteria		
<b>Interpolation Method:</b>	Stations	<b>Error Model:</b>	ISCWSA
<b>Depth Range:</b>	Unlimited	<b>Scan Method:</b>	Closest Approach 3D
<b>Results Limited by:</b>	Maximum center-center distance of 500.0 ft	<b>Error Surface:</b>	Elliptical Conic
<b>Warning Levels Evaluated at:</b>	2.00 Sigma	<b>Casing Method:</b>	Not applied

<b>Survey Tool Program</b>	<b>Date</b>	10/12/2017		
<b>From (ft)</b>	<b>To (ft)</b>	<b>Survey (Wellbore)</b>	<b>Tool Name</b>	<b>Description</b>
0.0	18,166.2	Plan #1 (9-26-17) (Wellbore #1)	MWD	MWD - Standard

Site Name	Reference Measured Depth (ft)	Offset Measured Depth (ft)	Distance Between Centres (ft)	Distance Between Ellipses (ft)	Separation Factor	Warning
<b>Offset Well - Wellbore - Design</b>						
Salt Ranch Fee 1807H East Pad Sec.18-T11N-R64W						
Salt Ranch Fee 201-1807H - Wellbore #1 - Plan #1 (9-26)	200.0	200.0	90.1	89.4	133.629	CC, ES
Salt Ranch Fee 201-1807H - Wellbore #1 - Plan #1 (9-26)	2,900.0	2,853.6	490.1	476.3	35.437	SF
Salt Ranch Fee 202-1807H - Wellbore #1 - Plan #1 (9-26)	800.0	800.0	30.1	26.8	8.936	CC, ES
Salt Ranch Fee 202-1807H - Wellbore #1 - Plan #1 (9-26)	18,144.7	17,935.7	378.4	44.5	1.133	Level 2, SF
Salt Ranch Fee 203-1807H - Wellbore #1 - Plan #1 (9-26)	600.0	600.0	30.1	27.7	12.186	CC, ES
Salt Ranch Fee 203-1807H - Wellbore #1 - Plan #1 (9-26)	18,166.2	17,957.4	397.7	54.6	1.159	Level 2, SF
Salt Ranch Fee 204-1807H - Wellbore #1 - Plan #1 (9-26)	200.0	200.0	90.1	89.4	133.635	CC, ES
Salt Ranch Fee 204-1807H - Wellbore #1 - Plan #1 (9-26)	2,800.0	2,731.9	498.7	484.9	36.177	SF
Salt Ranch Fee 501-1807H - Wellbore #1 - Plan #1 (9-26)	500.0	500.0	60.0	58.0	29.651	CC, ES
Salt Ranch Fee 501-1807H - Wellbore #1 - Plan #1 (9-26)	800.0	795.3	70.4	67.1	21.318	SF
Salt Ranch Fee 503-1807H - Wellbore #1 - Plan #1 (9-26)	400.0	400.0	60.0	58.4	38.123	CC, ES
Salt Ranch Fee 503-1807H - Wellbore #1 - Plan #1 (9-26)	800.0	792.8	79.7	76.4	24.098	SF
Salt Ranch Fee 1807H West Pad Sec.18-T11N-R64W						
Salt Ranch Fee 205-1807H - Wellbore #1 - Plan #1 (9-26)						Out of range
Salt Ranch Fee 206-1807H - Wellbore #1 - Plan #1 (9-26)						Out of range
Salt Ranch Fee 207-1807H - Wellbore #1 - Plan #1 (9-26)						Out of range
Salt Ranch Fee 208-1807H - Wellbore #1 - Plan #1 (9-26)						Out of range
Salt Ranch Fee 504-1807H - Wellbore #1 - Plan #1 (9-26)						Out of range
Salt Ranch Fee 505-1807H - Wellbore #1 - Plan #1 (9-26)						Out of range
Salt Ranch Fee 506-1807H - Wellbore #1 - Plan #1 (9-26)						Out of range

<b>Offset Design</b>	Salt Ranch Fee 1807H East Pad Sec.18-T11N-R64W - Salt Ranch Fee 201-1807H - Wellbore #1 - Plan											<b>Offset Site Error:</b>	0.0 ft
<b>Survey Program:</b>	0-MWD											<b>Offset Well Error:</b>	0.0 ft
Reference Measured Depth (ft)	Vertical Depth (ft)	Offset Measured Depth (ft)	Vertical Depth (ft)	Semi Major Axis Reference (ft)	Semi Major Axis Offset (ft)	Highside Toolface (°)	Offset Wellbore Centre +N/-S (ft)	Offset Wellbore Centre +E/-W (ft)	Distance Between Centres (ft)	Distance Between Ellipses (ft)	Minimum Separation (ft)	Separation Factor	Warning
0.0	0.0	0.0	0.0	0.0	0.0	90.46	-0.7	90.1	90.1				
100.0	100.0	100.0	100.0	0.1	0.1	90.46	-0.7	90.1	90.1	89.9	0.22	400.888	
200.0	200.0	200.0	200.0	0.3	0.3	90.46	-0.7	90.1	90.1	89.4	0.67	133.629	CC, ES
300.0	300.0	297.9	297.9	0.6	0.5	90.81	-1.3	91.2	91.3	90.2	1.10	82.724	
400.0	400.0	395.7	395.6	0.8	0.7	91.79	-3.0	94.6	94.7	93.2	1.54	61.709	
500.0	500.0	493.2	492.9	1.0	1.0	93.27	-5.7	100.2	100.6	98.6	1.99	50.660	

CC - Min centre to center distance or convergent point, SF - min separation factor, ES - min ellipse separation

<b>Company:</b>	Clear Creek Resource Partners	<b>Local Co-ordinate Reference:</b>	Well Salt Ranch Fee 502-1807H
<b>Project:</b>	SEC.18-T11N-R64W	<b>TVD Reference:</b>	WELL @ 5626.0ft (Original Well Elev)
<b>Reference Site:</b>	Salt Ranch Fee 1807H East Pad Sec.18-T11N-R64W	<b>MD Reference:</b>	WELL @ 5626.0ft (Original Well Elev)
<b>Site Error:</b>	0.0 ft	<b>North Reference:</b>	True
<b>Reference Well:</b>	Salt Ranch Fee 502-1807H	<b>Survey Calculation Method:</b>	Minimum Curvature
<b>Well Error:</b>	0.0 ft	<b>Output errors are at</b>	2.00 sigma
<b>Reference Wellbore</b>	Wellbore #1	<b>Database:</b>	US_EDM
<b>Reference Design:</b>	Plan #1 (9-26-17)	<b>Offset TVD Reference:</b>	Offset Datum

Offset Design													Offset Site Error:	0.0 ft		
Survey Program: 0-MWD													Salt Ranch Fee 1807H East Pad Sec.18-T11N-R64W - Salt Ranch Fee 201-1807H - Wellbore #1 - Plan		Offset Well Error:	0.0 ft
Reference		Offset		Semi Major Axis			Distance						Warning			
Measured Depth (ft)	Vertical Depth (ft)	Measured Depth (ft)	Vertical Depth (ft)	Reference (ft)	Offset (ft)	Highside Toolface (°)	Offset Wellbore Centre +N/-S (ft)	+E/-W (ft)	Between Centres (ft)	Between Ellipses (ft)	Minimum Separation (ft)	Separation Factor				
600.0	600.0	590.3	589.6	1.2	1.2	95.08	-9.6	107.9	108.9	106.4	2.45	44.352				
700.0	700.0	687.0	685.6	1.5	1.5	97.02	-14.5	117.9	119.6	116.7	2.94	40.657				
800.0	800.0	785.0	782.8	1.7	1.8	98.94	-20.4	129.7	132.4	128.9	3.45	38.383				
900.0	900.0	884.0	880.9	1.9	2.1	-116.52	-26.4	141.7	146.0	142.2	3.79	38.517				
1,000.0	999.9	982.9	978.9	2.1	2.5	-116.22	-32.4	153.8	160.8	156.6	4.21	38.165				
1,100.0	1,099.7	1,081.6	1,076.6	2.3	2.8	-116.69	-38.4	165.8	176.8	172.1	4.65	37.991				
1,146.4	1,145.9	1,127.3	1,121.9	2.4	2.9	-117.11	-41.1	171.4	184.6	179.8	4.86	37.955				
1,200.0	1,199.3	1,180.1	1,174.2	2.5	3.1	-117.75	-44.3	177.8	193.8	188.7	5.11	37.910				
1,300.0	1,298.9	1,278.5	1,271.7	2.7	3.5	-118.80	-50.3	189.8	211.0	205.4	5.59	37.772				
1,400.0	1,398.5	1,377.0	1,369.2	3.0	3.8	-119.69	-56.3	201.8	228.3	222.2	6.07	37.602				
1,500.0	1,498.1	1,475.4	1,466.8	3.2	4.1	-120.46	-62.2	213.8	245.6	239.1	6.56	37.414				
1,600.0	1,597.7	1,573.8	1,564.3	3.5	4.5	-121.12	-68.2	225.8	263.0	255.9	7.07	37.221				
1,700.0	1,697.3	1,672.3	1,661.8	3.7	4.8	-121.70	-74.2	237.8	280.4	272.8	7.57	37.032				
1,800.0	1,796.8	1,770.7	1,759.3	4.0	5.1	-122.22	-80.1	249.9	297.8	289.7	8.08	36.850				
1,900.0	1,896.4	1,869.2	1,856.9	4.2	5.5	-122.67	-86.1	261.9	315.2	306.6	8.59	36.676				
2,000.0	1,996.0	1,967.6	1,954.4	4.5	5.8	-123.08	-92.1	273.9	332.6	323.5	9.11	36.513				
2,100.0	2,095.6	2,066.0	2,051.9	4.8	6.2	-123.45	-98.0	285.9	350.1	340.5	9.63	36.360				
2,200.0	2,195.2	2,164.5	2,149.4	5.1	6.5	-123.78	-104.0	297.9	367.6	357.4	10.15	36.216				
2,300.0	2,294.8	2,262.9	2,247.0	5.3	6.8	-124.09	-109.9	309.9	385.1	374.4	10.67	36.081				
2,400.0	2,394.4	2,361.4	2,344.5	5.6	7.2	-124.36	-115.9	321.9	402.6	391.4	11.20	35.956				
2,500.0	2,494.0	2,459.8	2,442.0	5.9	7.5	-124.62	-121.9	333.9	420.1	408.3	11.72	35.838				
2,600.0	2,593.6	2,558.2	2,539.5	6.2	7.9	-124.85	-127.8	345.9	437.6	425.3	12.25	35.728				
2,700.0	2,693.1	2,656.7	2,637.1	6.4	8.2	-125.07	-133.8	357.9	455.1	442.3	12.77	35.625				
2,800.0	2,792.7	2,755.1	2,734.6	6.7	8.5	-125.27	-139.8	369.9	472.6	459.3	13.30	35.528				
2,900.0	2,892.3	2,853.6	2,832.1	7.0	8.9	-125.45	-145.7	381.9	490.1	476.3	13.83	35.437 SF				

<b>Company:</b>	Clear Creek Resource Partners	<b>Local Co-ordinate Reference:</b>	Well Salt Ranch Fee 502-1807H
<b>Project:</b>	SEC.18-T11N-R64W	<b>TVD Reference:</b>	WELL @ 5626.0ft (Original Well Elev)
<b>Reference Site:</b>	Salt Ranch Fee 1807H East Pad Sec.18-T11N-R64W	<b>MD Reference:</b>	WELL @ 5626.0ft (Original Well Elev)
<b>Site Error:</b>	0.0 ft	<b>North Reference:</b>	True
<b>Reference Well:</b>	Salt Ranch Fee 502-1807H	<b>Survey Calculation Method:</b>	Minimum Curvature
<b>Well Error:</b>	0.0 ft	<b>Output errors are at</b>	2.00 sigma
<b>Reference Wellbore</b>	Wellbore #1	<b>Database:</b>	US_EDM
<b>Reference Design:</b>	Plan #1 (9-26-17)	<b>Offset TVD Reference:</b>	Offset Datum

Offset Design													Offset Site Error:	0.0 ft		
Survey Program: O-MWD													Salt Ranch Fee 1807H East Pad Sec.18-T11N-R64W - Salt Ranch Fee 202-1807H - Wellbore #1 - Plan		Offset Well Error:	0.0 ft
Reference				Offset		Semi Major Axis			Distance				Warning			
Measured Depth (ft)	Vertical Depth (ft)	Measured Depth (ft)	Vertical Depth (ft)	Reference (ft)	Offset (ft)	Highside Toolface (°)	Offset Wellbore Centre +N/-S (ft)	+E/-W (ft)	Between Centres (ft)	Between Ellipses (ft)	Minimum Separation (ft)	Separation Factor				
0.0	0.0	0.0	0.0	0.0	0.0	90.69	-0.4	30.1	30.1							
100.0	100.0	100.0	100.0	0.1	0.1	90.69	-0.4	30.1	30.1	29.9	0.22	134.045				
200.0	200.0	200.0	200.0	0.3	0.3	90.69	-0.4	30.1	30.1	29.5	0.67	44.682				
300.0	300.0	300.0	300.0	0.6	0.6	90.69	-0.4	30.1	30.1	29.0	1.12	26.809				
400.0	400.0	400.0	400.0	0.8	0.8	90.69	-0.4	30.1	30.1	28.6	1.57	19.149				
500.0	500.0	500.0	500.0	1.0	1.0	90.69	-0.4	30.1	30.1	28.1	2.02	14.894				
600.0	600.0	600.0	600.0	1.2	1.2	90.69	-0.4	30.1	30.1	27.7	2.47	12.186				
700.0	700.0	700.0	700.0	1.5	1.5	90.69	-0.4	30.1	30.1	27.2	2.92	10.311				
800.0	800.0	800.0	800.0	1.7	1.7	90.69	-0.4	30.1	30.1	26.8	3.37	8.936	CC, ES			
900.0	900.0	900.0	900.0	1.9	1.9	-128.05	-0.4	30.1	30.9	27.1	3.80	8.145				
1,000.0	999.9	999.9	999.9	2.1	2.1	-133.32	-0.4	30.1	33.5	29.3	4.20	7.963				
1,100.0	1,099.7	1,099.8	1,099.8	2.3	2.3	-138.47	-1.7	30.3	38.1	33.5	4.59	8.293				
1,146.4	1,145.9	1,146.2	1,146.1	2.4	2.4	-140.01	-3.1	30.4	40.9	36.1	4.77	8.575				
1,200.0	1,199.3	1,199.7	1,199.7	2.5	2.5	-140.94	-5.6	30.6	44.3	39.3	4.97	8.910				
1,300.0	1,298.9	1,299.7	1,299.4	2.7	2.7	-140.08	-12.1	31.3	50.4	45.0	5.37	9.379				
1,400.0	1,398.5	1,399.6	1,398.9	3.0	2.9	-137.10	-20.8	32.1	56.2	50.4	5.80	9.697				
1,500.0	1,498.1	1,499.4	1,498.3	3.2	3.1	-134.40	-29.9	33.0	62.2	55.9	6.25	9.953				
1,600.0	1,597.7	1,599.2	1,597.6	3.5	3.3	-132.17	-38.9	33.9	68.2	61.5	6.71	10.163				
1,700.0	1,697.3	1,699.0	1,697.0	3.7	3.6	-130.30	-48.0	34.8	74.4	67.2	7.20	10.338				
1,800.0	1,796.8	1,798.7	1,796.4	4.0	3.8	-128.73	-57.1	35.7	80.6	72.9	7.69	10.483				
1,900.0	1,896.4	1,898.5	1,895.8	4.2	4.1	-127.38	-66.1	36.6	86.9	78.7	8.19	10.604				
2,000.0	1,996.0	1,998.3	1,995.1	4.5	4.3	-126.21	-75.2	37.5	93.2	84.5	8.70	10.706				
2,100.0	2,095.6	2,098.1	2,094.5	4.8	4.6	-125.19	-84.2	38.4	99.5	90.3	9.22	10.794				
2,200.0	2,195.2	2,197.9	2,193.9	5.1	4.8	-124.29	-93.3	39.3	105.9	96.2	9.74	10.868				
2,300.0	2,294.8	2,297.7	2,293.2	5.3	5.1	-123.50	-102.4	40.2	112.3	102.0	10.27	10.933				
2,400.0	2,394.4	2,397.4	2,392.6	5.6	5.4	-122.79	-111.4	41.0	118.7	107.9	10.80	10.989				
2,500.0	2,494.0	2,497.2	2,492.0	5.9	5.6	-122.15	-120.5	41.9	125.2	113.8	11.34	11.038				
2,600.0	2,593.6	2,597.0	2,591.3	6.2	5.9	-121.58	-129.5	42.8	131.6	119.7	11.88	11.081				
2,700.0	2,693.1	2,696.8	2,690.7	6.4	6.2	-121.06	-138.6	43.7	138.1	125.6	12.42	11.119				
2,800.0	2,792.7	2,796.6	2,790.1	6.7	6.5	-120.59	-147.7	44.6	144.5	131.6	12.96	11.153				
2,900.0	2,892.3	2,896.4	2,889.4	7.0	6.7	-120.15	-156.7	45.5	151.0	137.5	13.50	11.183				
3,000.0	2,991.9	2,996.1	2,988.8	7.3	7.0	-119.75	-165.8	46.4	157.5	143.4	14.05	11.211				
3,100.0	3,091.5	3,095.9	3,088.2	7.6	7.3	-119.39	-174.8	47.3	164.0	149.4	14.59	11.235				
3,200.0	3,191.1	3,195.7	3,187.5	7.8	7.6	-119.05	-183.9	48.2	170.5	155.3	15.14	11.258				
3,300.0	3,290.7	3,295.5	3,286.9	8.1	7.8	-118.74	-193.0	49.1	177.0	161.3	15.69	11.278				
3,400.0	3,390.3	3,395.3	3,386.3	8.4	8.1	-118.45	-202.0	50.0	183.5	167.2	16.24	11.297				
3,500.0	3,489.9	3,495.1	3,485.6	8.7	8.4	-118.17	-211.1	50.8	190.0	173.2	16.79	11.314				
3,600.0	3,589.4	3,594.9	3,585.0	9.0	8.7	-117.92	-220.1	51.7	196.5	179.2	17.35	11.329				
3,700.0	3,689.0	3,694.6	3,684.4	9.3	9.0	-117.68	-229.2	52.6	203.0	185.1	17.90	11.344				
3,800.0	3,788.6	3,794.4	3,783.7	9.5	9.2	-117.46	-238.3	53.5	209.6	191.1	18.45	11.357				
3,900.0	3,888.2	3,894.2	3,883.1	9.8	9.5	-117.25	-247.3	54.4	216.1	197.1	19.01	11.369				
4,000.0	3,987.8	3,994.0	3,982.5	10.1	9.8	-117.06	-256.4	55.3	222.6	203.1	19.56	11.381				
4,100.0	4,087.4	4,093.8	4,081.8	10.4	10.1	-116.87	-265.4	56.2	229.1	209.0	20.12	11.391				
4,200.0	4,187.0	4,193.6	4,181.2	10.7	10.4	-116.70	-274.5	57.1	235.7	215.0	20.67	11.401				
4,300.0	4,286.6	4,293.3	4,280.6	11.0	10.6	-116.53	-283.6	58.0	242.2	221.0	21.23	11.410				
4,400.0	4,386.2	4,393.1	4,379.9	11.2	10.9	-116.37	-292.6	58.9	248.8	227.0	21.78	11.419				
4,500.0	4,485.7	4,492.9	4,479.3	11.5	11.2	-116.22	-301.7	59.8	255.3	233.0	22.34	11.427				
4,600.0	4,585.3	4,592.7	4,578.7	11.8	11.5	-116.08	-310.7	60.6	261.8	238.9	22.90	11.435				
4,700.0	4,684.9	4,692.5	4,678.0	12.1	11.8	-115.95	-319.8	61.5	268.4	244.9	23.46	11.442				
4,800.0	4,784.5	4,792.3	4,777.4	12.4	12.1	-115.82	-328.9	62.4	274.9	250.9	24.01	11.449				
4,900.0	4,884.1	4,892.0	4,876.8	12.7	12.3	-115.70	-337.9	63.3	281.5	256.9	24.57	11.455				

CC - Min centre to center distance or convergent point, SF - min separation factor, ES - min ellipse separation

<b>Company:</b>	Clear Creek Resource Partners	<b>Local Co-ordinate Reference:</b>	Well Salt Ranch Fee 502-1807H
<b>Project:</b>	SEC.18-T11N-R64W	<b>TVD Reference:</b>	WELL @ 5626.0ft (Original Well Elev)
<b>Reference Site:</b>	Salt Ranch Fee 1807H East Pad Sec.18-T11N-R64W	<b>MD Reference:</b>	WELL @ 5626.0ft (Original Well Elev)
<b>Site Error:</b>	0.0 ft	<b>North Reference:</b>	True
<b>Reference Well:</b>	Salt Ranch Fee 502-1807H	<b>Survey Calculation Method:</b>	Minimum Curvature
<b>Well Error:</b>	0.0 ft	<b>Output errors are at</b>	2.00 sigma
<b>Reference Wellbore</b>	Wellbore #1	<b>Database:</b>	US_EDM
<b>Reference Design:</b>	Plan #1 (9-26-17)	<b>Offset TVD Reference:</b>	Offset Datum

Offset Design													Offset Site Error:	0.0 ft		
Survey Program: O-MWD													Salt Ranch Fee 1807H East Pad Sec.18-T11N-R64W - Salt Ranch Fee 202-1807H - Wellbore #1 - Plan		Offset Well Error:	0.0 ft
Reference				Offset			Semi Major Axis			Distance				Warning		
Measured Depth (ft)	Vertical Depth (ft)	Measured Depth (ft)	Vertical Depth (ft)	Reference (ft)	Offset (ft)	Highside Toolface (°)	Offset Wellbore Centre +N/-S (ft)	+E/-W (ft)	Between Centres (ft)	Between Ellipses (ft)	Minimum Separation (ft)	Separation Factor				
5,000.0	4,983.7	4,997.2	4,981.6	13.0	12.6	-115.87	-345.9	64.1	287.6	262.5	25.12	11.452				
5,100.0	5,083.3	5,098.9	5,083.3	13.2	12.8	-117.45	-346.2	64.1	291.8	266.2	25.55	11.418				
5,200.0	5,182.9	5,198.5	5,182.9	13.5	12.9	-119.00	-346.2	64.1	296.1	270.1	25.96	11.404				
5,300.0	5,282.5	5,298.1	5,282.5	13.8	13.1	-120.51	-346.2	64.1	300.6	274.2	26.37	11.400				
5,400.0	5,382.0	5,397.6	5,382.0	14.1	13.3	-121.97	-346.2	64.1	305.3	278.5	26.77	11.405				
5,500.0	5,481.6	5,497.2	5,481.6	14.4	13.4	-123.39	-346.2	64.1	310.2	283.0	27.17	11.418				
5,600.0	5,581.2	5,596.8	5,581.2	14.7	13.6	-124.76	-346.2	64.1	315.3	287.7	27.56	11.438				
5,700.0	5,680.8	5,696.4	5,680.8	15.0	13.7	-126.08	-346.2	64.1	320.5	292.6	27.96	11.465				
5,760.0	5,740.5	5,756.1	5,740.5	15.1	13.8	-126.86	-346.2	64.1	323.8	295.6	28.19	11.484				
5,800.0	5,780.4	5,796.0	5,780.4	15.2	13.9	-127.36	-346.2	64.1	325.8	297.5	28.34	11.495				
5,900.0	5,880.2	5,895.8	5,880.2	15.4	14.1	-128.23	-346.2	64.1	329.4	300.8	28.67	11.490				
6,000.0	5,980.2	5,995.8	5,980.2	15.6	14.2	-128.59	-346.2	64.1	330.9	302.0	28.99	11.415				
6,019.8	6,000.0	6,015.6	6,000.0	15.6	14.3	88.19	-346.2	64.1	331.0	301.9	29.07	11.385				
6,100.0	6,080.2	6,095.8	6,080.2	15.7	14.4	88.19	-346.2	64.1	331.0	301.6	29.35	11.277				
6,200.0	6,180.2	6,195.8	6,180.2	15.9	14.6	88.19	-346.2	64.1	331.0	301.3	29.68	11.150				
6,300.0	6,280.2	6,295.8	6,280.2	16.1	14.8	88.19	-346.2	64.1	331.0	301.0	30.02	11.025				
6,400.0	6,380.2	6,395.8	6,380.2	16.2	14.9	88.19	-346.2	64.1	331.0	300.6	30.36	10.902				
6,500.0	6,480.2	6,495.8	6,480.2	16.4	15.1	88.19	-346.2	64.1	331.0	300.3	30.70	10.781				
6,600.0	6,580.2	6,595.8	6,580.2	16.5	15.3	88.19	-346.2	64.1	331.0	299.9	31.05	10.661				
6,700.0	6,680.2	6,695.8	6,680.2	16.7	15.5	88.19	-346.2	64.1	331.0	299.6	31.39	10.543				
6,800.0	6,780.2	6,795.8	6,780.2	16.9	15.7	88.19	-346.2	64.1	331.0	299.2	31.74	10.427				
6,900.0	6,880.2	6,895.8	6,880.2	17.0	15.8	88.19	-346.2	64.1	331.0	298.9	32.10	10.312				
7,000.0	6,980.2	6,995.8	6,980.2	17.2	16.0	88.19	-346.2	64.1	331.0	298.5	32.45	10.200				
7,100.0	7,080.2	7,095.8	7,080.2	17.4	16.2	88.19	-346.2	64.1	331.0	298.2	32.81	10.089				
7,200.0	7,180.2	7,195.8	7,180.2	17.5	16.4	88.19	-346.2	64.1	331.0	297.8	33.17	9.979				
7,300.0	7,280.2	7,295.8	7,280.2	17.7	16.6	88.19	-346.2	64.1	331.0	297.5	33.53	9.872				
7,400.0	7,380.2	7,394.4	7,378.6	17.9	16.7	87.24	-340.6	64.1	331.2	297.3	33.83	9.789				
7,500.0	7,480.2	7,489.6	7,472.0	18.0	16.8	84.13	-322.6	63.9	332.5	298.5	33.99	9.780				
7,531.6	7,511.8	7,518.6	7,499.8	18.1	16.8	82.77	-314.7	63.9	333.4	299.4	34.02	9.801				
7,550.0	7,530.2	7,535.1	7,515.6	18.1	16.8	82.33	-309.6	63.8	334.1	300.1	34.01	9.824				
7,600.0	7,580.1	7,579.7	7,557.4	18.2	16.8	79.99	-294.3	63.7	336.4	302.4	34.01	9.893				
7,650.0	7,629.7	7,623.6	7,597.6	18.3	16.8	77.72	-276.7	63.5	339.2	305.2	33.97	9.987				
7,700.0	7,678.7	7,666.8	7,636.0	18.3	16.8	75.55	-256.9	63.4	342.4	308.5	33.89	10.104				
7,750.0	7,726.8	7,709.4	7,672.7	18.3	16.9	73.48	-235.2	63.2	346.0	312.2	33.78	10.243				
7,800.0	7,774.0	7,750.0	7,706.4	18.3	16.9	71.58	-212.5	63.0	349.9	316.2	33.64	10.401				
7,850.0	7,819.8	7,793.1	7,740.6	18.3	16.9	69.68	-186.5	62.8	354.0	320.5	33.46	10.580				
7,900.0	7,864.2	7,834.2	7,771.8	18.3	16.9	67.95	-159.7	62.5	358.1	324.9	33.24	10.774				
7,950.0	7,906.8	7,874.9	7,801.2	18.3	16.9	66.34	-131.4	62.3	362.4	329.4	33.00	10.983				
8,000.0	7,947.5	7,915.2	7,828.6	18.3	17.0	64.85	-101.8	62.1	366.6	333.9	32.72	11.204				
8,050.0	7,986.1	7,955.2	7,854.1	18.3	17.0	63.49	-71.0	61.8	370.8	338.4	32.43	11.432				
8,100.0	8,022.4	7,994.9	7,877.6	18.2	17.1	62.24	-39.1	61.5	374.8	342.7	32.14	11.662				
8,150.0	8,056.2	8,034.3	7,899.3	18.2	17.2	61.12	-6.2	61.2	378.7	346.8	31.86	11.887				
8,200.0	8,087.3	8,073.5	7,918.9	18.2	17.3	60.11	27.7	61.0	382.2	350.7	31.59	12.100				
8,250.0	8,115.7	8,112.5	7,936.6	18.2	17.4	59.22	62.4	60.7	385.5	354.2	31.36	12.293				
8,300.0	8,141.1	8,150.0	7,951.8	18.2	17.6	58.46	96.7	60.4	388.5	357.3	31.19	12.458				
8,350.0	8,163.4	8,189.9	7,966.0	18.3	17.8	57.78	134.0	60.0	391.1	360.1	31.09	12.580				
8,400.0	8,182.5	8,228.3	7,977.7	18.4	18.0	57.23	170.6	59.7	393.4	362.3	31.09	12.654				
8,450.0	8,198.4	8,266.7	7,987.4	18.6	18.3	56.79	207.7	59.4	395.2	364.0	31.18	12.674				
8,500.0	8,211.0	8,300.0	7,994.2	18.9	18.5	56.48	240.3	59.1	396.6	365.3	31.36	12.646				
8,550.0	8,220.1	8,343.2	8,000.7	19.2	18.8	56.22	283.0	58.8	397.5	365.8	31.72	12.531				
8,600.0	8,225.8	8,381.4	8,004.3	19.6	19.1	56.10	321.0	58.5	398.0	365.8	32.19	12.365				

CC - Min centre to center distance or convergent point, SF - min separation factor, ES - min ellipse separation

<b>Company:</b>	Clear Creek Resource Partners	<b>Local Co-ordinate Reference:</b>	Well Salt Ranch Fee 502-1807H
<b>Project:</b>	SEC.18-T11N-R64W	<b>TVD Reference:</b>	WELL @ 5626.0ft (Original Well Elev)
<b>Reference Site:</b>	Salt Ranch Fee 1807H East Pad Sec.18-T11N-R64W	<b>MD Reference:</b>	WELL @ 5626.0ft (Original Well Elev)
<b>Site Error:</b>	0.0 ft	<b>North Reference:</b>	True
<b>Reference Well:</b>	Salt Ranch Fee 502-1807H	<b>Survey Calculation Method:</b>	Minimum Curvature
<b>Well Error:</b>	0.0 ft	<b>Output errors are at</b>	2.00 sigma
<b>Reference Wellbore</b>	Wellbore #1	<b>Database:</b>	US_EDM
<b>Reference Design:</b>	Plan #1 (9-26-17)	<b>Offset TVD Reference:</b>	Offset Datum

Offset Design													Offset Site Error:	0.0 ft
Survey Program: O-MWD Salt Ranch Fee 1807H East Pad Sec.18-T11N-R64W - Salt Ranch Fee 202-1807H - Wellbore #1 - Plan													Offset Well Error:	0.0 ft
Reference				Offset		Semi Major Axis			Distance				Warning	
Measured Depth (ft)	Vertical Depth (ft)	Measured Depth (ft)	Vertical Depth (ft)	Reference (ft)	Offset (ft)	Highside Tooface (°)	Offset Wellbore Centre +N/-S (ft)	+E/-W (ft)	Between Centres (ft)	Between Ellipses (ft)	Minimum Separation (ft)	Separation Factor		
8,650.0	8,228.0	8,419.5	8,005.9	20.0	19.4	56.09	359.1	58.1	398.1	365.3	32.78	12.144		
8,658.8	8,227.0	8,425.5	8,006.0	20.1	19.5	56.22	365.1	58.1	397.5	364.5	32.93	12.069		
8,659.8	8,227.0	8,426.3	8,006.0	20.1	19.5	56.22	365.9	58.1	397.5	364.5	32.95	12.064		
8,700.0	8,226.9	8,461.5	8,006.0	20.4	19.8	56.22	401.1	57.9	397.3	363.8	33.46	11.873		
8,800.0	8,226.6	8,551.2	8,005.9	21.3	20.5	56.20	490.8	59.5	396.7	361.9	34.71	11.427		
8,855.3	8,226.4	8,600.0	8,005.9	21.7	20.8	56.18	539.5	61.6	396.2	360.8	35.43	11.182		
8,891.6	8,226.3	8,633.3	8,005.9	22.1	21.1	56.18	572.8	63.5	396.0	360.0	36.00	11.000		
8,900.0	8,226.3	8,640.9	8,005.9	22.2	21.2	56.18	580.4	64.0	396.0	359.9	36.14	10.959		
9,000.0	8,225.9	8,740.9	8,005.8	23.4	22.3	56.24	680.2	70.4	396.2	358.1	38.16	10.383		
9,100.0	8,225.6	8,840.9	8,005.7	24.6	23.6	56.31	780.0	76.8	396.4	356.0	40.40	9.812		
9,200.0	8,225.3	8,940.9	8,005.7	26.0	24.9	56.37	879.8	83.3	396.6	353.8	42.78	9.272		
9,300.0	8,225.0	9,040.9	8,005.6	27.4	26.4	56.43	979.6	89.7	396.8	351.5	45.27	8.765		
9,400.0	8,224.7	9,140.9	8,005.5	28.8	27.9	56.49	1,079.4	96.2	397.0	349.1	47.87	8.293		
9,500.0	8,224.4	9,240.9	8,005.5	30.3	29.4	56.55	1,179.2	102.6	397.2	346.6	50.55	7.857		
9,600.0	8,224.1	9,340.9	8,005.4	31.9	31.0	56.61	1,279.0	109.1	397.4	344.1	53.31	7.454		
9,700.0	8,223.8	9,440.9	8,005.3	33.4	32.6	56.67	1,378.8	115.5	397.6	341.5	56.13	7.083		
9,800.0	8,223.5	9,540.9	8,005.3	35.1	34.2	56.73	1,478.5	122.0	397.8	338.8	59.01	6.741		
9,900.0	8,223.2	9,640.9	8,005.2	36.7	35.9	56.79	1,578.3	128.4	398.0	336.1	61.93	6.426		
10,000.0	8,222.9	9,740.9	8,005.1	38.4	37.6	56.85	1,678.1	134.9	398.2	333.3	64.90	6.136		
10,100.0	8,222.6	9,840.9	8,005.1	40.1	39.3	56.91	1,777.9	141.3	398.4	330.5	67.90	5.867		
10,200.0	8,222.2	9,940.9	8,005.0	41.8	41.0	56.97	1,877.7	147.7	398.6	327.7	70.94	5.619		
10,300.0	8,221.9	10,040.9	8,004.9	43.5	42.8	57.03	1,977.5	154.2	398.8	324.8	74.00	5.389		
10,400.0	8,221.6	10,140.9	8,004.9	45.2	44.5	57.09	2,077.3	160.6	399.0	321.9	77.09	5.176		
10,500.0	8,221.3	10,240.9	8,004.8	47.0	46.3	57.15	2,177.1	167.1	399.2	319.0	80.21	4.977		
10,600.0	8,221.0	10,340.9	8,004.7	48.8	48.1	57.21	2,276.9	173.5	399.4	316.1	83.35	4.792		
10,700.0	8,220.7	10,440.9	8,004.7	50.5	49.9	57.27	2,376.7	180.0	399.6	313.1	86.50	4.620		
10,800.0	8,220.4	10,540.9	8,004.6	52.3	51.7	57.33	2,476.5	186.4	399.8	310.1	89.67	4.459		
10,900.0	8,220.1	10,640.9	8,004.5	54.1	53.5	57.39	2,576.2	192.9	400.0	307.2	92.86	4.308		
11,000.0	8,219.8	10,740.9	8,004.5	55.9	55.3	57.45	2,676.0	199.3	400.2	304.2	96.07	4.166		
11,100.0	8,219.5	10,840.9	8,004.4	57.7	57.1	57.51	2,775.8	205.8	400.4	301.1	99.29	4.033		
11,200.0	8,219.2	10,940.9	8,004.3	59.6	59.0	57.57	2,875.6	212.2	400.6	298.1	102.52	3.908		
11,300.0	8,218.9	11,040.9	8,004.3	61.4	60.8	57.63	2,975.4	218.7	400.8	295.1	105.76	3.790		
11,400.0	8,218.6	11,140.9	8,004.2	63.2	62.6	57.69	3,075.2	225.1	401.1	292.0	109.02	3.679		
11,500.0	8,218.2	11,240.9	8,004.1	65.0	64.5	57.75	3,175.0	231.5	401.3	289.0	112.28	3.574		
11,600.0	8,217.9	11,340.9	8,004.1	66.9	66.3	57.81	3,274.8	238.0	401.5	285.9	115.56	3.474		
11,700.0	8,217.6	11,440.9	8,004.0	68.7	68.2	57.87	3,374.6	244.4	401.7	282.8	118.84	3.380		
11,800.0	8,217.3	11,540.9	8,003.9	70.6	70.0	57.93	3,474.4	250.9	401.9	279.7	122.14	3.290		
11,900.0	8,217.0	11,640.9	8,003.9	72.4	71.9	57.99	3,574.2	257.3	402.1	276.7	125.44	3.205		
12,000.0	8,216.7	11,740.9	8,003.8	74.3	73.7	58.05	3,673.9	263.8	402.3	273.6	128.75	3.125		
12,100.0	8,216.4	11,840.9	8,003.7	76.1	75.6	58.11	3,773.7	270.2	402.5	270.4	132.07	3.048		
12,200.0	8,216.1	11,940.9	8,003.7	78.0	77.4	58.17	3,873.5	276.7	402.7	267.3	135.39	2.974		
12,300.0	8,215.8	12,040.9	8,003.6	79.8	79.3	58.23	3,973.3	283.1	402.9	264.2	138.73	2.905		
12,400.0	8,215.5	12,140.9	8,003.5	81.7	81.2	58.29	4,073.1	289.6	403.1	261.1	142.06	2.838		
12,500.0	8,215.2	12,240.9	8,003.5	83.5	83.0	58.34	4,172.9	296.0	403.4	257.9	145.41	2.774		
12,600.0	8,214.9	12,340.9	8,003.4	85.4	84.9	58.40	4,272.7	302.4	403.6	254.8	148.76	2.713		
12,700.0	8,214.5	12,440.9	8,003.4	87.3	86.8	58.46	4,372.5	308.9	403.8	251.7	152.12	2.654		
12,800.0	8,214.2	12,540.9	8,003.3	89.2	88.7	58.52	4,472.3	315.3	404.0	248.5	155.48	2.598		
12,900.0	8,213.9	12,640.9	8,003.2	91.0	90.5	58.58	4,572.1	321.8	404.2	245.3	158.85	2.544		
13,000.0	8,213.6	12,740.9	8,003.2	92.9	92.4	58.64	4,671.9	328.2	404.4	242.2	162.23	2.493		
13,100.0	8,213.3	12,840.9	8,003.1	94.8	94.3	58.70	4,771.6	334.7	404.6	239.0	165.61	2.443		
13,202.2	8,213.0	12,943.1	8,003.0	96.7	96.2	58.76	4,871.3	341.3	404.8	235.8	169.07	2.395		

CC - Min centre to center distance or convergent point, SF - min separation factor, ES - min ellipse separation

<b>Company:</b>	Clear Creek Resource Partners	<b>Local Co-ordinate Reference:</b>	Well Salt Ranch Fee 502-1807H
<b>Project:</b>	SEC.18-T11N-R64W	<b>TVD Reference:</b>	WELL @ 5626.0ft (Original Well Elev)
<b>Reference Site:</b>	Salt Ranch Fee 1807H East Pad Sec.18-T11N-R64W	<b>MD Reference:</b>	WELL @ 5626.0ft (Original Well Elev)
<b>Site Error:</b>	0.0 ft	<b>North Reference:</b>	True
<b>Reference Well:</b>	Salt Ranch Fee 502-1807H	<b>Survey Calculation Method:</b>	Minimum Curvature
<b>Well Error:</b>	0.0 ft	<b>Output errors are at</b>	2.00 sigma
<b>Reference Wellbore</b>	Wellbore #1	<b>Database:</b>	US_EDM
<b>Reference Design:</b>	Plan #1 (9-26-17)	<b>Offset TVD Reference:</b>	Offset Datum

Offset Design													Offset Site Error:	0.0 ft		
Survey Program: O-MWD													Salt Ranch Fee 1807H East Pad Sec.18-T11N-R64W - Salt Ranch Fee 202-1807H - Wellbore #1 - Plan		Offset Well Error:	0.0 ft
Reference		Offset		Semi Major Axis			Distance						Warning			
Measured Depth (ft)	Vertical Depth (ft)	Measured Depth (ft)	Vertical Depth (ft)	Reference (ft)	Offset (ft)	Highside Toolface (°)	Offset Wellbore Centre +N/-S (ft)	+E/-W (ft)	Between Centres (ft)	Between Ellipses (ft)	Minimum Separation (ft)	Separation Factor				
13,300.0	8,212.7	13,050.2	8,002.9	98.4	98.1	58.87	4,980.6	347.1	405.7	233.3	172.38	2.354				
13,400.0	8,212.4	13,164.0	8,002.9	100.0	99.9	58.96	5,094.4	349.2	406.3	230.9	175.42	2.316				
13,500.0	8,212.1	13,277.9	8,002.8	101.6	101.8	59.02	5,208.2	346.7	406.6	228.3	178.25	2.281				
13,587.7	8,211.8	13,377.7	8,002.7	103.0	103.4	59.04	5,307.8	340.8	406.4	225.9	180.55	2.251				
13,600.0	8,211.8	13,391.1	8,002.7	103.2	103.6	59.04	5,321.2	339.7	406.3	225.4	180.95	2.246				
13,700.0	8,211.5	13,491.1	8,002.7	105.2	105.5	59.03	5,420.9	331.7	405.7	221.4	184.29	2.202				
13,800.0	8,211.2	13,591.1	8,002.6	107.1	107.4	59.01	5,520.5	323.8	405.1	217.5	187.64	2.159				
13,900.0	8,210.9	13,691.1	8,002.6	109.0	109.3	59.00	5,620.2	315.8	404.5	213.5	190.99	2.118				
14,000.0	8,210.6	13,791.1	8,002.5	110.9	111.2	58.99	5,719.9	307.8	403.9	209.5	194.35	2.078				
14,100.0	8,210.3	13,891.1	8,002.4	112.8	113.1	58.98	5,819.6	299.9	403.3	205.6	197.71	2.040				
14,200.0	8,210.0	13,991.1	8,002.4	114.7	115.0	58.96	5,919.3	291.9	402.7	201.6	201.07	2.003				
14,300.0	8,209.7	14,091.1	8,002.3	116.6	117.0	58.95	6,018.9	283.9	402.0	197.6	204.43	1.967				
14,400.0	8,209.4	14,191.1	8,002.3	118.5	118.9	58.94	6,118.6	276.0	401.4	193.6	207.79	1.932				
14,500.0	8,209.1	14,291.1	8,002.2	120.4	120.8	58.93	6,218.3	268.0	400.8	189.7	211.15	1.898				
14,600.0	8,208.8	14,391.1	8,002.1	122.4	122.7	58.91	6,318.0	260.0	400.2	185.7	214.51	1.866				
14,700.0	8,208.5	14,491.1	8,002.1	124.3	124.6	58.90	6,417.7	252.1	399.6	181.7	217.88	1.834				
14,800.0	8,208.2	14,591.1	8,002.0	126.2	126.5	58.89	6,517.3	244.1	399.0	177.7	221.24	1.803				
14,900.0	8,207.9	14,691.1	8,002.0	128.1	128.4	58.88	6,617.0	236.1	398.3	173.7	224.61	1.774				
15,000.0	8,207.6	14,791.1	8,001.9	130.1	130.4	58.86	6,716.7	228.2	397.7	169.8	227.98	1.745				
15,100.0	8,207.3	14,891.1	8,001.8	132.0	132.3	58.85	6,816.4	220.2	397.1	165.8	231.34	1.717				
15,200.0	8,207.0	14,991.1	8,001.8	133.9	134.2	58.84	6,916.1	212.2	396.5	161.8	234.71	1.689				
15,300.0	8,206.7	15,091.1	8,001.7	135.8	136.1	58.82	7,015.7	204.3	395.9	157.8	238.08	1.663				
15,400.0	8,206.4	15,191.1	8,001.7	137.8	138.1	58.81	7,115.4	196.3	395.3	153.8	241.45	1.637				
15,500.0	8,206.0	15,291.1	8,001.6	139.7	140.0	58.80	7,215.1	188.3	394.7	149.8	244.82	1.612				
15,600.0	8,205.7	15,391.1	8,001.5	141.6	141.9	58.78	7,314.8	180.4	394.0	145.9	248.19	1.588				
15,700.0	8,205.4	15,491.1	8,001.5	143.5	143.8	58.77	7,414.5	172.4	393.4	141.9	251.56	1.564				
15,800.0	8,205.1	15,591.1	8,001.4	145.5	145.8	58.76	7,514.1	164.4	392.8	137.9	254.93	1.541				
15,900.0	8,204.8	15,691.1	8,001.4	147.4	147.7	58.75	7,613.8	156.5	392.2	133.9	258.30	1.518				
16,000.0	8,204.5	15,791.1	8,001.3	149.3	149.6	58.73	7,713.5	148.5	391.6	129.9	261.67	1.496 Level 3				
16,100.0	8,204.2	15,891.0	8,001.2	151.3	151.6	58.72	7,813.2	140.5	391.0	125.9	265.04	1.475 Level 3				
16,200.0	8,203.9	15,991.0	8,001.2	153.2	153.5	58.71	7,912.9	132.6	390.3	121.9	268.41	1.454 Level 3				
16,300.0	8,203.6	16,091.0	8,001.1	155.1	155.4	58.69	8,012.5	124.6	389.7	118.0	271.78	1.434 Level 3				
16,400.0	8,203.3	16,191.0	8,001.1	157.1	157.3	58.68	8,112.2	116.6	389.1	114.0	275.15	1.414 Level 3				
16,500.0	8,203.0	16,291.0	8,001.0	159.0	159.3	58.67	8,211.9	108.7	388.5	110.0	278.52	1.395 Level 3				
16,600.0	8,202.7	16,391.0	8,000.9	160.9	161.2	58.65	8,311.6	100.7	387.9	106.0	281.89	1.376 Level 3				
16,700.0	8,202.4	16,491.0	8,000.9	162.9	163.1	58.64	8,411.3	92.7	387.3	102.0	285.26	1.358 Level 3				
16,800.0	8,202.1	16,591.0	8,000.8	164.8	165.1	58.62	8,510.9	84.8	386.7	98.0	288.62	1.340 Level 3				
16,900.0	8,201.8	16,691.0	8,000.7	166.7	167.0	58.61	8,610.6	76.8	386.0	94.1	291.99	1.322 Level 3				
17,000.0	8,201.5	16,791.0	8,000.7	168.7	169.0	58.60	8,710.3	68.8	385.4	90.1	295.36	1.305 Level 3				
17,100.0	8,201.2	16,891.0	8,000.6	170.6	170.9	58.58	8,810.0	60.9	384.8	86.1	298.73	1.288 Level 3				
17,200.0	8,200.9	16,991.0	8,000.6	172.6	172.8	58.57	8,909.7	52.9	384.2	82.1	302.10	1.272 Level 3				
17,300.0	8,200.6	17,091.0	8,000.5	174.5	174.8	58.56	9,009.3	44.9	383.6	78.1	305.47	1.256 Level 3				
17,400.0	8,200.3	17,191.0	8,000.4	176.4	176.7	58.54	9,109.0	37.0	383.0	74.1	308.84	1.240 Level 2				
17,500.0	8,200.0	17,291.0	8,000.4	178.4	178.6	58.53	9,208.7	29.0	382.4	70.2	312.20	1.225 Level 2				
17,600.0	8,199.7	17,391.0	8,000.3	180.3	180.6	58.51	9,308.4	21.0	381.7	66.2	315.57	1.210 Level 2				
17,700.0	8,199.4	17,491.0	8,000.3	182.3	182.5	58.50	9,408.1	13.1	381.1	62.2	318.94	1.195 Level 2				
17,800.0	8,199.1	17,591.0	8,000.2	184.2	184.5	58.49	9,507.8	5.1	380.5	58.2	322.30	1.181 Level 2				
17,900.0	8,198.8	17,691.0	8,000.1	186.1	186.4	58.47	9,607.4	-2.9	379.9	54.2	325.67	1.167 Level 2				
18,000.0	8,198.5	17,791.0	8,000.1	188.1	188.3	58.46	9,707.1	-10.8	379.3	50.2	329.03	1.153 Level 2				
18,100.0	8,198.2	17,891.0	8,000.0	190.0	190.3	58.44	9,806.8	-18.8	378.7	46.3	332.40	1.139 Level 2				
18,144.7	8,198.1	17,935.7	8,000.0	190.9	191.2	58.44	9,851.3	-22.4	378.4	44.5	333.90	1.133 Level 2, SF				

CC - Min centre to center distance or convergent point, SF - min separation factor, ES - min ellipse separation

<b>Company:</b>	Clear Creek Resource Partners	<b>Local Co-ordinate Reference:</b>	Well Salt Ranch Fee 502-1807H
<b>Project:</b>	SEC.18-T11N-R64W	<b>TVD Reference:</b>	WELL @ 5626.0ft (Original Well Elev)
<b>Reference Site:</b>	Salt Ranch Fee 1807H East Pad Sec.18-T11N-R64W	<b>MD Reference:</b>	WELL @ 5626.0ft (Original Well Elev)
<b>Site Error:</b>	0.0 ft	<b>North Reference:</b>	True
<b>Reference Well:</b>	Salt Ranch Fee 502-1807H	<b>Survey Calculation Method:</b>	Minimum Curvature
<b>Well Error:</b>	0.0 ft	<b>Output errors are at</b>	2.00 sigma
<b>Reference Wellbore</b>	Wellbore #1	<b>Database:</b>	US_EDM
<b>Reference Design:</b>	Plan #1 (9-26-17)	<b>Offset TVD Reference:</b>	Offset Datum

<b>Offset Design</b>												<b>Offset Site Error:</b>	0.0 ft
Salt Ranch Fee 1807H East Pad Sec.18-T11N-R64W - Salt Ranch Fee 202-1807H - Wellbore #1 - Plan												<b>Offset Well Error:</b>	0.0 ft
Survey Program: 0-MWD													
Reference		Offset		Semi Major Axis			Distance						
Measured Depth (ft)	Vertical Depth (ft)	Measured Depth (ft)	Vertical Depth (ft)	Reference (ft)	Offset (ft)	Highside Toolface (°)	Offset Wellbore Centre +N/-S (ft)	+E/-W (ft)	Between Centres (ft)	Between Ellipses (ft)	Minimum Separation (ft)	Separation Factor	Warning
18,166.2	8,198.0	17,935.9	8,000.0	191.3	191.2	58.44	9,851.6	-22.4	378.9	44.6	334.27	1.133	Level 2

<b>Company:</b>	Clear Creek Resource Partners	<b>Local Co-ordinate Reference:</b>	Well Salt Ranch Fee 502-1807H
<b>Project:</b>	SEC.18-T11N-R64W	<b>TVD Reference:</b>	WELL @ 5626.0ft (Original Well Elev)
<b>Reference Site:</b>	Salt Ranch Fee 1807H East Pad Sec.18-T11N-R64W	<b>MD Reference:</b>	WELL @ 5626.0ft (Original Well Elev)
<b>Site Error:</b>	0.0 ft	<b>North Reference:</b>	True
<b>Reference Well:</b>	Salt Ranch Fee 502-1807H	<b>Survey Calculation Method:</b>	Minimum Curvature
<b>Well Error:</b>	0.0 ft	<b>Output errors are at</b>	2.00 sigma
<b>Reference Wellbore</b>	Wellbore #1	<b>Database:</b>	US_EDM
<b>Reference Design:</b>	Plan #1 (9-26-17)	<b>Offset TVD Reference:</b>	Offset Datum

Offset Design													Offset Site Error:	0.0 ft		
Survey Program: O-MWD													Salt Ranch Fee 1807H East Pad Sec.18-T11N-R64W - Salt Ranch Fee 203-1807H - Wellbore #1 - Plan		Offset Well Error:	0.0 ft
Reference		Offset		Semi Major Axis			Distance						Warning			
Measured Depth (ft)	Vertical Depth (ft)	Measured Depth (ft)	Vertical Depth (ft)	Reference (ft)	Offset (ft)	Highside Toolface (°)	Offset Wellbore Centre +N/-S (ft)	+E/-W (ft)	Between Centres (ft)	Between Ellipses (ft)	Minimum Separation (ft)	Separation Factor	Warning			
0.0	0.0	0.0	0.0	0.0	0.0	-89.31	0.4	-30.1	30.1							
100.0	100.0	100.0	100.0	0.1	0.1	-89.31	0.4	-30.1	30.1	29.9	0.22	134.045				
200.0	200.0	200.0	200.0	0.3	0.3	-89.31	0.4	-30.1	30.1	29.5	0.67	44.682				
300.0	300.0	300.0	300.0	0.6	0.6	-89.31	0.4	-30.1	30.1	29.0	1.12	26.809				
400.0	400.0	400.0	400.0	0.8	0.8	-89.31	0.4	-30.1	30.1	28.6	1.57	19.149				
500.0	500.0	500.0	500.0	1.0	1.0	-89.31	0.4	-30.1	30.1	28.1	2.02	14.894				
600.0	600.0	600.0	600.0	1.2	1.2	-89.31	0.4	-30.1	30.1	27.7	2.47	12.186	CC, ES			
700.0	700.0	699.3	699.3	1.5	1.4	-90.57	-0.3	-31.2	31.2	28.3	2.90	10.771				
800.0	800.0	798.5	798.4	1.7	1.6	-93.85	-2.3	-34.5	34.6	31.3	3.32	10.441				
900.0	900.0	897.5	897.2	1.9	1.8	46.42	-5.7	-40.0	39.6	35.9	3.72	10.654				
1,000.0	999.9	996.3	995.6	2.1	2.1	45.18	-10.3	-47.7	45.2	41.0	4.11	10.990				
1,100.0	1,099.7	1,095.0	1,093.6	2.3	2.3	45.13	-16.3	-57.5	51.2	46.7	4.52	11.335				
1,146.4	1,145.9	1,140.8	1,139.0	2.4	2.4	45.39	-19.5	-62.7	54.2	49.5	4.72	11.490				
1,200.0	1,199.3	1,194.2	1,191.9	2.5	2.6	45.82	-23.5	-69.2	57.8	52.8	4.96	11.648				
1,300.0	1,298.9	1,294.0	1,290.7	2.7	2.9	46.49	-30.8	-81.1	64.3	58.9	5.41	11.878				
1,400.0	1,398.5	1,393.8	1,389.5	3.0	3.2	47.04	-38.1	-93.1	70.9	65.0	5.88	12.043				
1,500.0	1,498.1	1,493.6	1,488.3	3.2	3.5	47.49	-45.4	-105.0	77.4	71.0	6.37	12.160				
1,600.0	1,597.7	1,593.4	1,587.1	3.5	3.9	47.87	-52.7	-117.0	84.0	77.1	6.86	12.245				
1,700.0	1,697.3	1,693.2	1,685.9	3.7	4.2	48.20	-60.0	-129.0	90.5	83.2	7.36	12.305				
1,800.0	1,796.8	1,792.9	1,784.7	4.0	4.5	48.48	-67.3	-140.9	97.1	89.2	7.86	12.348				
1,900.0	1,896.4	1,892.7	1,883.5	4.2	4.9	48.73	-74.6	-152.9	103.7	95.3	8.38	12.378				
2,000.0	1,996.0	1,992.5	1,982.3	4.5	5.2	48.95	-81.9	-164.8	110.3	101.4	8.89	12.398				
2,100.0	2,095.6	2,092.3	2,081.0	4.8	5.5	49.14	-89.2	-176.8	116.8	107.4	9.41	12.411				
2,200.0	2,195.2	2,192.1	2,179.8	5.1	5.9	49.31	-96.5	-188.8	123.4	113.5	9.94	12.419				
2,300.0	2,294.8	2,291.9	2,278.6	5.3	6.2	49.47	-103.8	-200.7	130.0	119.5	10.46	12.424				
2,400.0	2,394.4	2,391.6	2,377.4	5.6	6.6	49.61	-111.1	-212.7	136.6	125.6	10.99	12.425				
2,500.0	2,494.0	2,491.4	2,476.2	5.9	6.9	49.74	-118.4	-224.7	143.1	131.6	11.52	12.424				
2,600.0	2,593.6	2,591.2	2,575.0	6.2	7.3	49.85	-125.7	-236.6	149.7	137.7	12.05	12.421				
2,700.0	2,693.1	2,691.0	2,673.8	6.4	7.6	49.96	-133.0	-248.6	156.3	143.7	12.59	12.417				
2,800.0	2,792.7	2,790.8	2,772.6	6.7	8.0	50.06	-140.3	-260.5	162.9	149.8	13.12	12.412				
2,900.0	2,892.3	2,890.5	2,871.4	7.0	8.3	50.15	-147.6	-272.5	169.5	155.8	13.66	12.406				
3,000.0	2,991.9	2,990.3	2,970.2	7.3	8.7	50.23	-154.9	-284.5	176.0	161.8	14.20	12.400				
3,100.0	3,091.5	3,090.1	3,069.0	7.6	9.0	50.31	-162.2	-296.4	182.6	167.9	14.74	12.394				
3,200.0	3,191.1	3,189.9	3,167.8	7.8	9.4	50.38	-169.5	-308.4	189.2	173.9	15.27	12.387				
3,300.0	3,290.7	3,289.7	3,266.6	8.1	9.7	50.45	-176.8	-320.3	195.8	180.0	15.81	12.380				
3,400.0	3,390.3	3,389.5	3,365.4	8.4	10.1	50.51	-184.1	-332.3	202.4	186.0	16.36	12.374				
3,500.0	3,489.9	3,489.2	3,464.2	8.7	10.4	50.57	-191.4	-344.3	209.0	192.1	16.90	12.367				
3,600.0	3,589.4	3,589.0	3,563.0	9.0	10.8	50.62	-198.7	-356.2	215.5	198.1	17.44	12.360				
3,700.0	3,689.0	3,688.8	3,661.7	9.3	11.1	50.68	-206.0	-368.2	222.1	204.1	17.98	12.353				
3,800.0	3,788.6	3,788.6	3,760.5	9.5	11.5	50.73	-213.3	-380.2	228.7	210.2	18.52	12.346				
3,900.0	3,888.2	3,888.4	3,859.3	9.8	11.8	50.77	-220.6	-392.1	235.3	216.2	19.07	12.340				
4,000.0	3,987.8	3,988.2	3,958.1	10.1	12.2	50.82	-227.9	-404.1	241.9	222.3	19.61	12.333				
4,100.0	4,087.4	4,087.9	4,056.9	10.4	12.5	50.86	-235.2	-416.0	248.5	228.3	20.16	12.327				
4,200.0	4,187.0	4,187.7	4,155.7	10.7	12.9	50.90	-242.5	-428.0	255.0	234.3	20.70	12.321				
4,300.0	4,286.6	4,287.5	4,254.5	11.0	13.2	50.93	-249.9	-440.0	261.6	240.4	21.24	12.315				
4,400.0	4,386.2	4,387.3	4,353.3	11.2	13.6	50.97	-257.2	-451.9	268.2	246.4	21.79	12.309				
4,500.0	4,485.7	4,487.1	4,452.1	11.5	14.0	51.00	-264.5	-463.9	274.8	252.5	22.34	12.303				
4,600.0	4,585.3	4,586.9	4,550.9	11.8	14.3	51.04	-271.8	-475.9	281.4	258.5	22.88	12.297				
4,700.0	4,684.9	4,686.6	4,649.7	12.1	14.7	51.07	-279.1	-487.8	288.0	264.5	23.43	12.291				
4,800.0	4,784.5	4,786.4	4,748.5	12.4	15.0	51.10	-286.4	-499.8	294.5	270.6	23.97	12.286				
4,900.0	4,884.1	4,886.2	4,847.3	12.7	15.4	51.12	-293.7	-511.7	301.1	276.6	24.52	12.281				

CC - Min centre to center distance or convergent point, SF - min separation factor, ES - min ellipse separation

<b>Company:</b>	Clear Creek Resource Partners	<b>Local Co-ordinate Reference:</b>	Well Salt Ranch Fee 502-1807H
<b>Project:</b>	SEC.18-T11N-R64W	<b>TVD Reference:</b>	WELL @ 5626.0ft (Original Well Elev)
<b>Reference Site:</b>	Salt Ranch Fee 1807H East Pad Sec.18-T11N-R64W	<b>MD Reference:</b>	WELL @ 5626.0ft (Original Well Elev)
<b>Site Error:</b>	0.0 ft	<b>North Reference:</b>	True
<b>Reference Well:</b>	Salt Ranch Fee 502-1807H	<b>Survey Calculation Method:</b>	Minimum Curvature
<b>Well Error:</b>	0.0 ft	<b>Output errors are at</b>	2.00 sigma
<b>Reference Wellbore</b>	Wellbore #1	<b>Database:</b>	US_EDM
<b>Reference Design:</b>	Plan #1 (9-26-17)	<b>Offset TVD Reference:</b>	Offset Datum

Offset Design													Offset Site Error:	0.0 ft		
Survey Program: 0-MWD													Salt Ranch Fee 1807H East Pad Sec.18-T11N-R64W - Salt Ranch Fee 203-1807H - Wellbore #1 - Plan		Offset Well Error:	0.0 ft
Reference				Offset		Semi Major Axis			Distance				Warning			
Measured Depth (ft)	Vertical Depth (ft)	Measured Depth (ft)	Vertical Depth (ft)	Reference (ft)	Offset (ft)	Highside Toolface (°)	Offset Wellbore Centre +N/-S (ft)	+E/-W (ft)	Between Centres (ft)	Between Ellipses (ft)	Minimum Separation (ft)	Separation Factor				
5,000.0	4,983.7	4,986.0	4,946.1	13.0	15.7	51.15	-301.0	-523.7	307.7	282.6	25.07	12.276				
5,100.0	5,083.3	5,085.8	5,044.9	13.2	16.1	51.18	-308.3	-535.7	314.3	288.7	25.61	12.271				
5,200.0	5,182.9	5,185.6	5,143.7	13.5	16.4	51.20	-315.6	-547.6	320.9	294.7	26.16	12.266				
5,300.0	5,282.5	5,285.3	5,242.4	13.8	16.8	51.22	-322.9	-559.6	327.5	300.8	26.71	12.262				
5,400.0	5,382.0	5,385.1	5,341.2	14.1	17.1	51.25	-330.2	-571.5	334.1	306.8	27.25	12.257				
5,500.0	5,481.6	5,484.9	5,440.0	14.4	17.5	51.27	-337.5	-583.5	340.6	312.8	27.80	12.253				
5,600.0	5,581.2	5,584.7	5,538.8	14.7	17.8	51.29	-344.8	-595.5	347.2	318.9	28.35	12.248				
5,700.0	5,680.8	5,683.3	5,642.5	15.0	18.2	51.34	-352.3	-607.7	353.5	324.6	28.89	12.235				
5,760.0	5,740.5	5,756.5	5,709.2	15.1	18.3	51.50	-356.2	-614.2	356.0	326.8	29.21	12.190				
5,800.0	5,780.4	5,801.3	5,753.8	15.2	18.4	51.65	-358.4	-617.8	357.2	327.8	29.40	12.152				
5,900.0	5,880.2	5,913.4	5,865.7	15.4	18.6	51.93	-362.3	-624.1	359.3	329.5	29.78	12.064				
6,000.0	5,980.2	6,025.6	5,977.8	15.6	18.8	52.04	-363.9	-626.8	360.2	330.1	30.11	11.961				
6,019.8	6,000.0	6,047.8	6,000.0	15.6	18.8	-91.17	-363.9	-626.8	360.2	330.0	30.23	11.916				
6,100.0	6,080.2	6,128.0	6,080.2	15.7	19.0	-91.17	-363.9	-626.8	360.2	329.7	30.50	11.809				
6,200.0	6,180.2	6,228.0	6,180.2	15.9	19.1	-91.17	-363.9	-626.8	360.2	329.4	30.82	11.686				
6,300.0	6,280.2	6,328.0	6,280.2	16.1	19.2	-91.17	-363.9	-626.8	360.2	329.1	31.15	11.564				
6,400.0	6,380.2	6,428.0	6,380.2	16.2	19.4	-91.17	-363.9	-626.8	360.2	328.7	31.48	11.444				
6,500.0	6,480.2	6,528.0	6,480.2	16.4	19.5	-91.17	-363.9	-626.8	360.2	328.4	31.81	11.325				
6,600.0	6,580.2	6,628.0	6,580.2	16.5	19.6	-91.17	-363.9	-626.8	360.2	328.1	32.14	11.207				
6,700.0	6,680.2	6,728.0	6,680.2	16.7	19.8	-91.17	-363.9	-626.8	360.2	327.7	32.48	11.091				
6,800.0	6,780.2	6,828.0	6,780.2	16.9	19.9	-91.17	-363.9	-626.8	360.2	327.4	32.81	10.977				
6,900.0	6,880.2	6,928.0	6,880.2	17.0	20.1	-91.17	-363.9	-626.8	360.2	327.0	33.16	10.864				
7,000.0	6,980.2	7,028.0	6,980.2	17.2	20.2	-91.17	-363.9	-626.8	360.2	326.7	33.50	10.752				
7,100.0	7,080.2	7,128.0	7,080.2	17.4	20.4	-91.17	-363.9	-626.8	360.2	326.4	33.85	10.642				
7,200.0	7,180.2	7,228.0	7,180.2	17.5	20.5	-91.17	-363.9	-626.8	360.2	326.0	34.20	10.534				
7,300.0	7,280.2	7,328.0	7,280.2	17.7	20.7	-91.17	-363.9	-626.8	360.2	325.7	34.55	10.427				
7,400.0	7,380.2	7,428.2	7,380.2	17.9	20.8	-90.38	-359.0	-626.9	360.2	325.2	34.95	10.305				
7,400.2	7,380.4	7,428.3	7,380.4	17.9	20.8	-90.38	-359.0	-626.9	360.2	325.2	34.95	10.305				
7,500.0	7,480.2	7,525.3	7,475.6	18.0	20.9	-87.54	-341.1	-627.0	360.6	325.2	35.49	10.162				
7,531.6	7,511.8	7,554.8	7,504.0	18.1	20.9	-86.27	-333.1	-627.0	361.2	325.5	35.68	10.122				
7,550.0	7,530.2	7,571.7	7,520.1	18.1	20.9	-85.02	-328.0	-627.1	361.6	325.9	35.75	10.115				
7,600.0	7,580.1	7,617.1	7,562.8	18.2	20.9	-82.86	-312.5	-627.2	363.2	327.1	36.04	10.077				
7,650.0	7,629.7	7,661.8	7,603.7	18.3	20.9	-80.76	-294.5	-627.3	365.2	328.9	36.28	10.067				
7,700.0	7,678.7	7,705.8	7,642.8	18.3	20.9	-78.72	-274.4	-627.4	367.7	331.2	36.46	10.085				
7,750.0	7,726.8	7,750.0	7,680.8	18.3	20.8	-76.73	-251.8	-627.6	370.5	334.0	36.58	10.131				
7,800.0	7,774.0	7,791.9	7,715.5	18.3	20.8	-74.90	-228.3	-627.7	373.7	337.1	36.62	10.205				
7,850.0	7,819.8	7,834.1	7,749.0	18.3	20.8	-73.12	-202.6	-627.9	377.1	340.5	36.59	10.306				
7,900.0	7,864.2	7,875.9	7,780.5	18.3	20.7	-71.45	-175.2	-628.1	380.7	344.2	36.50	10.431				
7,950.0	7,906.8	7,917.2	7,810.1	18.3	20.7	-69.87	-146.4	-628.3	384.4	348.1	36.34	10.579				
8,000.0	7,947.5	7,958.1	7,837.7	18.3	20.6	-68.40	-116.3	-628.5	388.2	352.0	36.12	10.747				
8,050.0	7,986.1	8,000.0	7,864.2	18.3	20.6	-67.00	-83.8	-628.7	391.9	356.1	35.85	10.931				
8,100.0	8,022.4	8,038.8	7,887.0	18.2	20.6	-65.78	-52.4	-628.9	395.6	360.0	35.56	11.124				
8,150.0	8,056.2	8,078.7	7,908.6	18.2	20.5	-64.64	-18.8	-629.1	399.1	363.9	35.26	11.320				
8,200.0	8,087.3	8,118.3	7,928.1	18.2	20.5	-63.60	15.6	-629.3	402.5	367.5	34.96	11.512				
8,250.0	8,115.7	8,157.7	7,945.7	18.2	20.5	-62.67	50.9	-629.6	405.7	371.0	34.70	11.691				
8,300.0	8,141.1	8,200.0	7,962.3	18.2	20.5	-61.80	89.7	-629.8	408.6	374.1	34.49	11.846				
8,350.0	8,163.4	8,235.9	7,974.6	18.3	20.5	-61.13	123.5	-630.0	411.2	376.8	34.36	11.968				
8,400.0	8,182.5	8,274.7	7,986.0	18.4	20.5	-60.51	160.6	-630.3	413.5	379.1	34.36	12.033				
8,450.0	8,198.4	8,313.4	7,995.3	18.6	20.5	-60.00	198.1	-630.5	415.4	381.0	34.43	12.063				
8,500.0	8,211.0	8,350.0	8,002.2	18.9	20.6	-59.61	234.0	-630.8	417.0	382.3	34.65	12.034				
8,550.0	8,220.1	8,390.5	8,007.8	19.2	20.7	-59.30	274.2	-631.0	418.1	383.1	35.03	11.936				

CC - Min centre to center distance or convergent point, SF - min separation factor, ES - min ellipse separation

<b>Company:</b>	Clear Creek Resource Partners	<b>Local Co-ordinate Reference:</b>	Well Salt Ranch Fee 502-1807H
<b>Project:</b>	SEC.18-T11N-R64W	<b>TVD Reference:</b>	WELL @ 5626.0ft (Original Well Elev)
<b>Reference Site:</b>	Salt Ranch Fee 1807H East Pad Sec.18-T11N-R64W	<b>MD Reference:</b>	WELL @ 5626.0ft (Original Well Elev)
<b>Site Error:</b>	0.0 ft	<b>North Reference:</b>	True
<b>Reference Well:</b>	Salt Ranch Fee 502-1807H	<b>Survey Calculation Method:</b>	Minimum Curvature
<b>Well Error:</b>	0.0 ft	<b>Output errors are at</b>	2.00 sigma
<b>Reference Wellbore</b>	Wellbore #1	<b>Database:</b>	US_EDM
<b>Reference Design:</b>	Plan #1 (9-26-17)	<b>Offset TVD Reference:</b>	Offset Datum

Offset Design													Offset Site Error:	0.0 ft		
Survey Program: O-MWD													Salt Ranch Fee 1807H East Pad Sec.18-T11N-R64W - Salt Ranch Fee 203-1807H - Wellbore #1 - Plan		Offset Well Error:	0.0 ft
Reference				Offset			Semi Major Axis			Distance			Warning			
Measured Depth (ft)	Vertical Depth (ft)	Measured Depth (ft)	Vertical Depth (ft)	Reference (ft)	Offset (ft)	Highside Toolface (°)	Offset Wellbore Centre +N/-S (ft)	+E/-W (ft)	Between Centres (ft)	Between Ellipses (ft)	Minimum Separation (ft)	Separation Factor	Warning			
8,600.0	8,225.8	8,429.0	8,010.9	19.6	20.9	-59.09	312.5	-631.3	418.9	383.4	35.56	11.782				
8,650.0	8,228.0	8,468.8	8,012.0	20.0	21.1	-58.99	352.3	-631.5	419.3	383.0	36.23	11.571				
8,658.8	8,227.0	8,475.7	8,012.0	20.1	21.1	-59.11	359.1	-631.6	418.8	382.4	36.40	11.505				
8,659.8	8,227.0	8,476.8	8,012.0	20.1	21.1	-59.11	360.3	-631.6	418.8	382.3	36.42	11.499				
8,700.0	8,226.9	8,522.7	8,012.0	20.4	21.4	-59.10	406.2	-631.4	418.5	381.5	37.01	11.309				
8,800.0	8,226.6	8,637.0	8,011.9	21.3	22.3	-59.07	520.5	-627.7	417.7	379.2	38.47	10.857				
8,841.7	8,226.4	8,679.5	8,011.9	21.6	22.7	-59.07	562.9	-625.4	417.4	378.3	39.12	10.672				
8,855.3	8,226.4	8,693.1	8,011.8	21.7	22.9	-59.07	576.5	-624.7	417.5	378.1	39.33	10.615				
8,900.0	8,226.3	8,737.8	8,011.8	22.2	23.3	-59.11	621.1	-622.2	417.6	377.5	40.18	10.394				
9,000.0	8,225.9	8,837.8	8,011.8	23.4	24.4	-59.18	721.0	-616.8	418.1	375.8	42.27	9.889				
9,100.0	8,225.6	8,937.8	8,011.7	24.6	25.6	-59.25	820.8	-611.4	418.5	373.9	44.53	9.398				
9,200.0	8,225.3	9,037.8	8,011.6	26.0	26.9	-59.32	920.7	-606.0	418.9	371.9	46.92	8.927				
9,300.0	8,225.0	9,137.8	8,011.6	27.4	28.2	-59.39	1,020.5	-600.5	419.3	369.8	49.43	8.482				
9,400.0	8,224.7	9,237.8	8,011.5	28.8	29.6	-59.46	1,120.4	-595.1	419.7	367.6	52.05	8.064				
9,500.0	8,224.4	9,337.8	8,011.4	30.3	31.1	-59.54	1,220.2	-589.7	420.1	365.3	54.75	7.673				
9,600.0	8,224.1	9,437.8	8,011.4	31.9	32.6	-59.61	1,320.1	-584.2	420.5	363.0	57.53	7.309				
9,700.0	8,223.8	9,537.8	8,011.3	33.4	34.2	-59.68	1,419.9	-578.8	420.9	360.5	60.38	6.971				
9,800.0	8,223.5	9,637.8	8,011.2	35.1	35.8	-59.75	1,519.8	-573.4	421.3	358.0	63.28	6.658				
9,900.0	8,223.2	9,737.8	8,011.2	36.7	37.4	-59.82	1,619.6	-567.9	421.7	355.5	66.24	6.367				
10,000.0	8,222.9	9,837.8	8,011.1	38.4	39.0	-59.89	1,719.5	-562.5	422.2	352.9	69.24	6.097				
10,100.0	8,222.6	9,937.8	8,011.0	40.1	40.7	-59.96	1,819.3	-557.1	422.6	350.3	72.29	5.846				
10,200.0	8,222.2	10,037.8	8,011.0	41.8	42.3	-60.03	1,919.2	-551.6	423.0	347.6	75.36	5.613				
10,300.0	8,221.9	10,137.8	8,010.9	43.5	44.1	-60.10	2,019.0	-546.2	423.4	344.9	78.48	5.395				
10,400.0	8,221.6	10,237.8	8,010.8	45.2	45.8	-60.17	2,118.9	-540.8	423.8	342.2	81.62	5.193				
10,500.0	8,221.3	10,337.8	8,010.8	47.0	47.5	-60.24	2,218.7	-535.4	424.2	339.5	84.78	5.004				
10,600.0	8,221.0	10,437.8	8,010.7	48.8	49.2	-60.31	2,318.6	-529.9	424.7	336.7	87.97	4.827				
10,700.0	8,220.7	10,537.8	8,010.6	50.5	51.0	-60.38	2,418.4	-524.5	425.1	333.9	91.18	4.662				
10,800.0	8,220.4	10,637.8	8,010.6	52.3	52.8	-60.45	2,518.3	-519.1	425.5	331.1	94.41	4.507				
10,900.0	8,220.1	10,737.8	8,010.5	54.1	54.5	-60.52	2,618.1	-513.6	425.9	328.2	97.66	4.361				
11,000.0	8,219.8	10,837.8	8,010.4	55.9	56.3	-60.59	2,718.0	-508.2	426.3	325.4	100.93	4.224				
11,100.0	8,219.5	10,937.8	8,010.4	57.7	58.1	-60.66	2,817.8	-502.8	426.7	322.5	104.21	4.095				
11,200.0	8,219.2	11,037.8	8,010.3	59.6	59.9	-60.73	2,917.7	-497.3	427.2	319.7	107.51	3.973				
11,300.0	8,218.9	11,137.8	8,010.2	61.4	61.7	-60.80	3,017.5	-491.9	427.6	316.8	110.82	3.859				
11,400.0	8,218.6	11,237.8	8,010.2	63.2	63.6	-60.86	3,117.4	-486.5	428.0	313.9	114.14	3.750				
11,500.0	8,218.2	11,337.8	8,010.1	65.0	65.4	-60.93	3,217.2	-481.0	428.4	311.0	117.47	3.647				
11,600.0	8,217.9	11,437.8	8,010.0	66.9	67.2	-61.00	3,317.1	-475.6	428.9	308.0	120.82	3.550				
11,700.0	8,217.6	11,537.8	8,010.0	68.7	69.0	-61.07	3,416.9	-470.2	429.3	305.1	124.17	3.457				
11,800.0	8,217.3	11,637.8	8,009.9	70.6	70.9	-61.14	3,516.8	-464.8	429.7	302.2	127.54	3.369				
11,900.0	8,217.0	11,737.8	8,009.8	72.4	72.7	-61.21	3,616.6	-459.3	430.1	299.2	130.91	3.286				
12,000.0	8,216.7	11,837.8	8,009.8	74.3	74.5	-61.27	3,716.5	-453.9	430.6	296.3	134.30	3.206				
12,100.0	8,216.4	11,937.8	8,009.7	76.1	76.4	-61.34	3,816.3	-448.5	431.0	293.3	137.69	3.130				
12,200.0	8,216.1	12,037.8	8,009.6	78.0	78.2	-61.41	3,916.2	-443.0	431.4	290.3	141.09	3.058				
12,300.0	8,215.8	12,137.8	8,009.6	79.8	80.1	-61.48	4,016.0	-437.6	431.8	287.3	144.50	2.989				
12,400.0	8,215.5	12,237.8	8,009.5	81.7	81.9	-61.54	4,115.9	-432.2	432.3	284.4	147.91	2.922				
12,500.0	8,215.2	12,337.8	8,009.4	83.5	83.8	-61.61	4,215.7	-426.7	432.7	281.4	151.34	2.859				
12,600.0	8,214.9	12,437.7	8,009.4	85.4	85.6	-61.68	4,315.6	-421.3	433.1	278.4	154.77	2.799				
12,700.0	8,214.5	12,537.7	8,009.3	87.3	87.5	-61.75	4,415.4	-415.9	433.6	275.4	158.20	2.741				
12,800.0	8,214.2	12,637.7	8,009.2	89.2	89.4	-61.81	4,515.3	-410.4	434.0	272.3	161.64	2.685				
12,900.0	8,213.9	12,737.7	8,009.2	91.0	91.2	-61.88	4,615.1	-405.0	434.4	269.3	165.09	2.631				
13,000.0	8,213.6	12,837.7	8,009.1	92.9	93.1	-61.95	4,715.0	-399.6	434.9	266.3	168.55	2.580				
13,100.0	8,213.3	12,937.7	8,009.0	94.8	95.0	-62.01	4,814.8	-394.1	435.3	263.3	172.01	2.531				

CC - Min centre to center distance or convergent point, SF - min separation factor, ES - min ellipse separation

<b>Company:</b>	Clear Creek Resource Partners	<b>Local Co-ordinate Reference:</b>	Well Salt Ranch Fee 502-1807H
<b>Project:</b>	SEC.18-T11N-R64W	<b>TVD Reference:</b>	WELL @ 5626.0ft (Original Well Elev)
<b>Reference Site:</b>	Salt Ranch Fee 1807H East Pad Sec.18-T11N-R64W	<b>MD Reference:</b>	WELL @ 5626.0ft (Original Well Elev)
<b>Site Error:</b>	0.0 ft	<b>North Reference:</b>	True
<b>Reference Well:</b>	Salt Ranch Fee 502-1807H	<b>Survey Calculation Method:</b>	Minimum Curvature
<b>Well Error:</b>	0.0 ft	<b>Output errors are at</b>	2.00 sigma
<b>Reference Wellbore</b>	Wellbore #1	<b>Database:</b>	US_EDM
<b>Reference Design:</b>	Plan #1 (9-26-17)	<b>Offset TVD Reference:</b>	Offset Datum

Offset Design													Offset Site Error:	0.0 ft		
Survey Program: O-MWD													Salt Ranch Fee 1807H East Pad Sec.18-T11N-R64W - Salt Ranch Fee 203-1807H - Wellbore #1 - Plan		Offset Well Error:	0.0 ft
Reference				Offset		Semi Major Axis			Distance				Warning			
Measured Depth (ft)	Vertical Depth (ft)	Measured Depth (ft)	Vertical Depth (ft)	Reference (ft)	Offset (ft)	Highside Toolface (°)	Offset Wellbore Centre +N/-S (ft)	+E/-W (ft)	Between Centres (ft)	Between Ellipses (ft)	Minimum Separation (ft)	Separation Factor				
13,202.2	8,213.0	13,036.5	8,009.0	96.7	96.8	-62.08	4,913.4	-388.9	435.8	260.4	175.47	2.484				
13,300.0	8,212.7	13,122.7	8,008.9	98.4	98.2	-62.19	4,999.6	-386.3	436.9	258.1	178.76	2.444				
13,400.0	8,212.4	13,210.8	8,008.9	100.0	99.7	-62.28	5,087.7	-386.3	437.6	255.8	181.72	2.408				
13,500.0	8,212.1	13,300.0	8,008.8	101.6	101.1	-62.34	5,176.8	-389.1	437.9	253.4	184.49	2.373				
13,587.7	8,211.8	13,379.1	8,008.8	103.0	102.4	-62.37	5,255.8	-393.7	437.8	251.0	186.79	2.344				
13,600.0	8,211.8	13,391.4	8,008.8	103.2	102.6	-62.36	5,268.1	-394.5	437.7	250.5	187.18	2.338				
13,700.0	8,211.5	13,491.4	8,008.7	105.2	104.5	-62.34	5,367.9	-401.1	436.8	246.2	190.58	2.292				
13,800.0	8,211.2	13,591.4	8,008.6	107.1	106.5	-62.31	5,467.7	-407.6	435.9	241.9	194.00	2.247				
13,900.0	8,210.9	13,691.4	8,008.6	109.0	108.4	-62.29	5,567.4	-414.1	435.0	237.6	197.42	2.204				
14,000.0	8,210.6	13,791.4	8,008.5	110.9	110.3	-62.26	5,667.2	-420.7	434.1	233.3	200.84	2.162				
14,100.0	8,210.3	13,891.4	8,008.5	112.8	112.2	-62.24	5,767.0	-427.2	433.3	229.0	204.26	2.121				
14,200.0	8,210.0	13,991.4	8,008.4	114.7	114.1	-62.21	5,866.8	-433.7	432.4	224.7	207.68	2.082				
14,300.0	8,209.7	14,091.4	8,008.3	116.6	116.0	-62.19	5,966.6	-440.3	431.5	220.4	211.10	2.044				
14,400.0	8,209.4	14,191.4	8,008.3	118.5	118.0	-62.16	6,066.4	-446.8	430.6	216.1	214.52	2.007				
14,500.0	8,209.1	14,291.4	8,008.2	120.4	119.9	-62.14	6,166.1	-453.3	429.8	211.8	217.94	1.972				
14,600.0	8,208.8	14,391.4	8,008.2	122.4	121.8	-62.11	6,265.9	-459.9	428.9	207.5	221.36	1.937				
14,700.0	8,208.5	14,491.4	8,008.1	124.3	123.7	-62.09	6,365.7	-466.4	428.0	203.2	224.79	1.904				
14,800.0	8,208.2	14,591.4	8,008.0	126.2	125.6	-62.06	6,465.5	-472.9	427.1	198.9	228.21	1.872				
14,900.0	8,207.9	14,691.4	8,008.0	128.1	127.6	-62.04	6,565.3	-479.5	426.3	194.6	231.63	1.840				
15,000.0	8,207.6	14,791.4	8,007.9	130.1	129.5	-62.01	6,665.0	-486.0	425.4	190.3	235.06	1.810				
15,100.0	8,207.3	14,891.4	8,007.9	132.0	131.4	-61.98	6,764.8	-492.5	424.5	186.0	238.48	1.780				
15,200.0	8,207.0	14,991.4	8,007.8	133.9	133.3	-61.96	6,864.6	-499.1	423.6	181.7	241.90	1.751				
15,300.0	8,206.7	15,091.4	8,007.7	135.8	135.3	-61.93	6,964.4	-505.6	422.7	177.4	245.32	1.723				
15,400.0	8,206.4	15,191.3	8,007.7	137.8	137.2	-61.91	7,064.2	-512.1	421.9	173.1	248.75	1.696				
15,500.0	8,206.0	15,291.3	8,007.6	139.7	139.1	-61.88	7,164.0	-518.7	421.0	168.8	252.17	1.669				
15,600.0	8,205.7	15,391.3	8,007.6	141.6	141.1	-61.85	7,263.7	-525.2	420.1	164.5	255.59	1.644				
15,700.0	8,205.4	15,491.3	8,007.5	143.5	143.0	-61.83	7,363.5	-531.7	419.2	160.2	259.01	1.619				
15,800.0	8,205.1	15,591.3	8,007.4	145.5	144.9	-61.80	7,463.3	-538.3	418.4	155.9	262.43	1.594				
15,900.0	8,204.8	15,691.3	8,007.4	147.4	146.8	-61.77	7,563.1	-544.8	417.5	151.6	265.85	1.570				
16,000.0	8,204.5	15,791.3	8,007.3	149.3	148.8	-61.75	7,662.9	-551.3	416.6	147.3	269.27	1.547				
16,100.0	8,204.2	15,891.3	8,007.3	151.3	150.7	-61.72	7,762.7	-557.9	415.7	143.0	272.69	1.525				
16,200.0	8,203.9	15,991.3	8,007.2	153.2	152.6	-61.69	7,862.4	-564.4	414.9	138.8	276.11	1.503				
16,300.0	8,203.6	16,091.3	8,007.1	155.1	154.6	-61.66	7,962.2	-570.9	414.0	134.5	279.53	1.481	Level 3			
16,400.0	8,203.3	16,191.3	8,007.1	157.1	156.5	-61.64	8,062.0	-577.5	413.1	130.2	282.94	1.460	Level 3			
16,500.0	8,203.0	16,291.3	8,007.0	159.0	158.4	-61.61	8,161.8	-584.0	412.2	125.9	286.36	1.440	Level 3			
16,600.0	8,202.7	16,391.3	8,007.0	160.9	160.4	-61.58	8,261.6	-590.5	411.4	121.6	289.77	1.420	Level 3			
16,700.0	8,202.4	16,491.3	8,006.9	162.9	162.3	-61.55	8,361.3	-597.1	410.5	117.3	293.19	1.400	Level 3			
16,800.0	8,202.1	16,591.3	8,006.8	164.8	164.3	-61.53	8,461.1	-603.6	409.6	113.0	296.60	1.381	Level 3			
16,900.0	8,201.8	16,691.3	8,006.8	166.7	166.2	-61.50	8,560.9	-610.1	408.7	108.7	300.01	1.362	Level 3			
17,000.0	8,201.5	16,791.3	8,006.7	168.7	168.1	-61.47	8,660.7	-616.7	407.9	104.4	303.42	1.344	Level 3			
17,100.0	8,201.2	16,891.3	8,006.7	170.6	170.1	-61.44	8,760.5	-623.2	407.0	100.2	306.83	1.326	Level 3			
17,200.0	8,200.9	16,991.3	8,006.6	172.6	172.0	-61.41	8,860.3	-629.7	406.1	95.9	310.24	1.309	Level 3			
17,300.0	8,200.6	17,091.3	8,006.5	174.5	173.9	-61.38	8,960.0	-636.3	405.2	91.6	313.64	1.292	Level 3			
17,400.0	8,200.3	17,191.3	8,006.5	176.4	175.9	-61.36	9,059.8	-642.8	404.4	87.3	317.05	1.275	Level 3			
17,500.0	8,200.0	17,291.3	8,006.4	178.4	177.8	-61.33	9,159.6	-649.3	403.5	83.0	320.45	1.259	Level 3			
17,600.0	8,199.7	17,391.3	8,006.4	180.3	179.8	-61.30	9,259.4	-655.9	402.6	78.8	323.86	1.243	Level 2			
17,700.0	8,199.4	17,491.3	8,006.3	182.3	181.7	-61.27	9,359.2	-662.4	401.7	74.5	327.26	1.228	Level 2			
17,800.0	8,199.1	17,591.3	8,006.2	184.2	183.6	-61.24	9,459.0	-668.9	400.9	70.2	330.66	1.212	Level 2			
17,900.0	8,198.8	17,691.2	8,006.2	186.1	185.6	-61.21	9,558.7	-675.5	400.0	65.9	334.06	1.197	Level 2			
18,000.0	8,198.5	17,791.2	8,006.1	188.1	187.5	-61.18	9,658.5	-682.0	399.1	61.7	337.45	1.183	Level 2			
18,100.0	8,198.2	17,891.2	8,006.1	190.0	189.4	-61.15	9,758.3	-688.5	398.2	57.4	340.85	1.168	Level 2			

CC - Min centre to center distance or convergent point, SF - min separation factor, ES - min ellipse separation

<b>Company:</b>	Clear Creek Resource Partners	<b>Local Co-ordinate Reference:</b>	Well Salt Ranch Fee 502-1807H
<b>Project:</b>	SEC.18-T11N-R64W	<b>TVD Reference:</b>	WELL @ 5626.0ft (Original Well Elev)
<b>Reference Site:</b>	Salt Ranch Fee 1807H East Pad Sec.18-T11N-R64W	<b>MD Reference:</b>	WELL @ 5626.0ft (Original Well Elev)
<b>Site Error:</b>	0.0 ft	<b>North Reference:</b>	True
<b>Reference Well:</b>	Salt Ranch Fee 502-1807H	<b>Survey Calculation Method:</b>	Minimum Curvature
<b>Well Error:</b>	0.0 ft	<b>Output errors are at</b>	2.00 sigma
<b>Reference Wellbore</b>	Wellbore #1	<b>Database:</b>	US_EDM
<b>Reference Design:</b>	Plan #1 (9-26-17)	<b>Offset TVD Reference:</b>	Offset Datum

<b>Offset Design</b>												<b>Offset Site Error:</b>	0.0 ft	
Salt Ranch Fee 1807H East Pad Sec.18-T11N-R64W - Salt Ranch Fee 203-1807H - Wellbore #1 - Plan												<b>Offset Well Error:</b>	0.0 ft	
Survey Program: 0-MWD														
Reference		Offset		Semi Major Axis			Distance							
Measured Depth (ft)	Vertical Depth (ft)	Measured Depth (ft)	Vertical Depth (ft)	Reference (ft)	Offset (ft)	Highside Toolface (°)	Offset Wellbore Centre +N/-S (ft)	+E/-W (ft)	Between Centres (ft)	Between Ellipses (ft)	Minimum Separation (ft)	Separation Factor	Warning	
18,166.2	8,198.0	17,957.4	8,006.0	191.3	190.7	-61.13	9,824.3	-692.8	397.7	54.6	343.10	1.159	Level 2, SF	

<b>Company:</b>	Clear Creek Resource Partners	<b>Local Co-ordinate Reference:</b>	Well Salt Ranch Fee 502-1807H
<b>Project:</b>	SEC.18-T11N-R64W	<b>TVD Reference:</b>	WELL @ 5626.0ft (Original Well Elev)
<b>Reference Site:</b>	Salt Ranch Fee 1807H East Pad Sec.18-T11N-R64W	<b>MD Reference:</b>	WELL @ 5626.0ft (Original Well Elev)
<b>Site Error:</b>	0.0 ft	<b>North Reference:</b>	True
<b>Reference Well:</b>	Salt Ranch Fee 502-1807H	<b>Survey Calculation Method:</b>	Minimum Curvature
<b>Well Error:</b>	0.0 ft	<b>Output errors are at</b>	2.00 sigma
<b>Reference Wellbore</b>	Wellbore #1	<b>Database:</b>	US_EDM
<b>Reference Design:</b>	Plan #1 (9-26-17)	<b>Offset TVD Reference:</b>	Offset Datum

Offset Design													Offset Site Error:	0.0 ft		
Survey Program: 0-MWD													Salt Ranch Fee 1807H East Pad Sec.18-T11N-R64W - Salt Ranch Fee 204-1807H - Wellbore #1 - Plan		Offset Well Error:	0.0 ft
Reference				Offset			Semi Major Axis			Distance				Warning		
Measured Depth (ft)	Vertical Depth (ft)	Measured Depth (ft)	Vertical Depth (ft)	Reference (ft)	Offset (ft)	Highside Tooface (°)	Offset Wellbore Centre +N/-S (ft)	+E/-W (ft)	Between Centres (ft)	Between Ellipses (ft)	Minimum Separation (ft)	Separation Factor	Warning			
0.0	0.0	0.0	0.0	0.0	0.0	-89.30	1.1	-90.1	90.1							
100.0	100.0	100.0	100.0	0.1	0.1	-89.30	1.1	-90.1	90.1	89.9	0.22	400.905				
200.0	200.0	200.0	200.0	0.3	0.3	-89.30	1.1	-90.1	90.1	89.4	0.67	133.635 CC, ES				
300.0	300.0	297.8	297.8	0.6	0.5	-89.55	0.7	-91.3	91.3	90.2	1.11	82.628				
400.0	400.0	395.4	395.4	0.8	0.8	-90.24	-0.4	-94.9	95.0	93.4	1.54	61.727				
500.0	500.0	492.8	492.6	1.0	1.0	-91.28	-2.3	-100.8	101.1	99.1	1.98	50.999				
600.0	600.0	589.9	589.2	1.2	1.2	-92.54	-4.8	-109.1	109.7	107.3	2.43	45.086				
700.0	700.0	686.4	685.1	1.5	1.5	-93.89	-8.1	-119.6	120.8	117.9	2.89	41.771				
800.0	800.0	782.3	780.0	1.7	1.8	-95.24	-12.1	-132.4	134.4	131.1	3.36	39.996				
900.0	900.0	877.6	874.1	1.9	2.2	46.89	-16.8	-147.3	149.6	145.9	3.78	39.586				
1,000.0	999.9	972.5	967.3	2.1	2.5	46.45	-22.2	-164.4	165.5	161.3	4.20	39.371				
1,100.0	1,099.7	1,066.9	1,059.5	2.3	2.9	46.50	-28.2	-183.6	182.0	177.4	4.65	39.157				
1,146.4	1,145.9	1,110.6	1,102.0	2.4	3.1	46.65	-31.2	-193.2	189.9	185.0	4.86	39.057				
1,200.0	1,199.3	1,160.8	1,150.7	2.5	3.4	46.93	-34.8	-204.8	199.4	194.3	5.12	38.970				
1,300.0	1,298.9	1,258.4	1,245.2	2.7	3.9	47.35	-42.1	-228.3	218.1	212.4	5.61	38.852				
1,400.0	1,398.5	1,356.7	1,340.3	3.0	4.4	47.71	-49.5	-251.9	236.7	230.6	6.11	38.717				
1,500.0	1,498.1	1,454.9	1,435.3	3.2	4.9	48.02	-56.9	-275.5	255.4	248.8	6.63	38.513				
1,600.0	1,597.7	1,553.1	1,530.4	3.5	5.5	48.28	-64.3	-299.1	274.1	267.0	7.16	38.300				
1,700.0	1,697.3	1,651.3	1,625.5	3.7	6.0	48.51	-71.7	-322.7	292.8	285.1	7.69	38.080				
1,800.0	1,796.8	1,749.6	1,720.5	4.0	6.5	48.71	-79.1	-346.3	311.5	303.3	8.23	37.863				
1,900.0	1,896.4	1,847.8	1,815.6	4.2	7.0	48.89	-86.4	-369.9	330.2	321.5	8.77	37.652				
2,000.0	1,996.0	1,946.0	1,910.6	4.5	7.6	49.05	-93.8	-393.5	348.9	339.6	9.32	37.449				
2,100.0	2,095.6	2,044.3	2,005.7	4.8	8.1	49.20	-101.2	-417.1	367.7	357.8	9.87	37.256				
2,200.0	2,195.2	2,142.5	2,100.8	5.1	8.6	49.33	-108.6	-440.7	386.4	376.0	10.42	37.073				
2,300.0	2,294.8	2,240.7	2,195.8	5.3	9.2	49.45	-116.0	-464.3	405.1	394.1	10.98	36.901				
2,400.0	2,394.4	2,339.0	2,290.9	5.6	9.7	49.56	-123.4	-487.9	423.8	412.3	11.54	36.738				
2,500.0	2,494.0	2,437.2	2,386.0	5.9	10.2	49.65	-130.7	-511.5	442.5	430.4	12.10	36.585				
2,600.0	2,593.6	2,535.4	2,481.0	6.2	10.8	49.74	-138.1	-535.1	461.2	448.6	12.66	36.441				
2,700.0	2,693.1	2,633.6	2,576.1	6.4	11.3	49.83	-145.5	-558.7	480.0	466.7	13.22	36.305				
2,800.0	2,792.7	2,731.9	2,671.2	6.7	11.9	49.91	-152.9	-582.3	498.7	484.9	13.78	36.177 SF				

<b>Company:</b>	Clear Creek Resource Partners	<b>Local Co-ordinate Reference:</b>	Well Salt Ranch Fee 502-1807H
<b>Project:</b>	SEC.18-T11N-R64W	<b>TVD Reference:</b>	WELL @ 5626.0ft (Original Well Elev)
<b>Reference Site:</b>	Salt Ranch Fee 1807H East Pad Sec.18-T11N-R64W	<b>MD Reference:</b>	WELL @ 5626.0ft (Original Well Elev)
<b>Site Error:</b>	0.0 ft	<b>North Reference:</b>	True
<b>Reference Well:</b>	Salt Ranch Fee 502-1807H	<b>Survey Calculation Method:</b>	Minimum Curvature
<b>Well Error:</b>	0.0 ft	<b>Output errors are at</b>	2.00 sigma
<b>Reference Wellbore</b>	Wellbore #1	<b>Database:</b>	US_EDM
<b>Reference Design:</b>	Plan #1 (9-26-17)	<b>Offset TVD Reference:</b>	Offset Datum

Offset Design													Offset Site Error:	0.0 ft		
Survey Program: 0-MWD													Salt Ranch Fee 1807H East Pad Sec.18-T11N-R64W - Salt Ranch Fee 501-1807H - Wellbore #1 - Plan		Offset Well Error:	0.0 ft
Reference		Offset		Semi Major Axis			Distance						Warning			
Measured Depth (ft)	Vertical Depth (ft)	Measured Depth (ft)	Vertical Depth (ft)	Reference (ft)	Offset (ft)	Highside Toolface (°)	Offset Wellbore Centre +N/-S (ft)	+E/-W (ft)	Between Centres (ft)	Between Ellipses (ft)	Minimum Separation (ft)	Separation Factor				
0.0	0.0	0.0	0.0	0.0	0.0	90.70	-0.7	60.0	60.0							
100.0	100.0	100.0	100.0	0.1	0.1	90.70	-0.7	60.0	60.0	59.8	0.22	266.860				
200.0	200.0	200.0	200.0	0.3	0.3	90.70	-0.7	60.0	60.0	59.3	0.67	88.953				
300.0	300.0	300.0	300.0	0.6	0.6	90.70	-0.7	60.0	60.0	58.9	1.12	53.372				
400.0	400.0	400.0	400.0	0.8	0.8	90.70	-0.7	60.0	60.0	58.4	1.57	38.123				
500.0	500.0	500.0	500.0	1.0	1.0	90.70	-0.7	60.0	60.0	58.0	2.02	29.651	CC, ES			
600.0	600.0	598.6	598.6	1.2	1.2	91.26	-1.3	61.1	61.1	58.7	2.45	24.948				
700.0	700.0	697.1	697.0	1.5	1.4	92.83	-3.2	64.4	64.6	61.7	2.87	22.505				
800.0	800.0	795.3	795.0	1.7	1.6	95.09	-6.2	70.0	70.4	67.1	3.30	21.318	SF			
900.0	900.0	893.1	892.4	1.9	1.9	-119.80	-10.5	77.7	79.4	75.7	3.71	21.378				
1,000.0	999.9	990.3	988.9	2.1	2.1	-119.08	-15.9	87.5	92.0	87.9	4.12	22.339				
1,100.0	1,099.7	1,088.5	1,086.2	2.3	2.4	-119.33	-22.2	99.0	107.7	103.1	4.55	23.671				
1,146.4	1,145.9	1,134.2	1,131.6	2.4	2.5	-119.78	-25.2	104.4	115.4	110.6	4.75	24.280				
1,200.0	1,199.3	1,187.0	1,183.9	2.5	2.7	-120.47	-28.6	110.6	124.5	119.5	4.99	24.939				
1,300.0	1,298.9	1,285.5	1,281.5	2.7	3.0	-121.51	-35.0	122.2	141.5	136.0	5.45	25.956				
1,400.0	1,398.5	1,384.0	1,379.1	3.0	3.3	-122.32	-41.4	133.8	158.5	152.6	5.92	26.760				
1,500.0	1,498.1	1,482.6	1,476.7	3.2	3.6	-122.98	-47.8	145.4	175.6	169.2	6.41	27.401				
1,600.0	1,597.7	1,581.1	1,574.4	3.5	3.9	-123.52	-54.2	157.0	192.7	185.8	6.90	27.924				
1,700.0	1,697.3	1,679.6	1,672.0	3.7	4.3	-123.98	-60.6	168.6	209.7	202.4	7.40	28.353				
1,800.0	1,796.8	1,778.1	1,769.6	4.0	4.6	-124.36	-67.0	180.3	226.9	219.0	7.90	28.708				
1,900.0	1,896.4	1,876.6	1,867.2	4.2	4.9	-124.69	-73.4	191.9	244.0	235.6	8.41	29.007				
2,000.0	1,996.0	1,975.1	1,964.8	4.5	5.3	-124.98	-79.8	203.5	261.1	252.2	8.92	29.261				
2,100.0	2,095.6	2,073.7	2,062.5	4.8	5.6	-125.23	-86.2	215.1	278.2	268.8	9.44	29.478				
2,200.0	2,195.2	2,172.2	2,160.1	5.1	5.9	-125.46	-92.6	226.7	295.4	285.4	9.96	29.665				
2,300.0	2,294.8	2,270.7	2,257.7	5.3	6.3	-125.66	-99.0	238.3	312.5	302.0	10.48	29.828				
2,400.0	2,394.4	2,369.2	2,355.3	5.6	6.6	-125.83	-105.5	249.9	329.6	318.6	11.00	29.970				
2,500.0	2,494.0	2,467.7	2,452.9	5.9	6.9	-125.99	-111.9	261.5	346.8	335.2	11.52	30.096				
2,600.0	2,593.6	2,566.2	2,550.6	6.2	7.3	-126.14	-118.3	273.1	363.9	351.9	12.05	30.207				
2,700.0	2,693.1	2,664.7	2,648.2	6.4	7.6	-126.27	-124.7	284.7	381.1	368.5	12.57	30.306				
2,800.0	2,792.7	2,763.3	2,745.8	6.7	7.9	-126.39	-131.1	296.3	398.2	385.1	13.10	30.395				
2,900.0	2,892.3	2,861.8	2,843.4	7.0	8.3	-126.50	-137.5	307.9	415.4	401.7	13.63	30.475				
3,000.0	2,991.9	2,960.3	2,941.0	7.3	8.6	-126.61	-143.9	319.6	432.5	418.3	14.16	30.547				
3,100.0	3,091.5	3,058.8	3,038.7	7.6	8.9	-126.70	-150.3	331.2	449.7	435.0	14.69	30.613				
3,200.0	3,191.1	3,157.3	3,136.3	7.8	9.3	-126.79	-156.7	342.8	466.8	451.6	15.22	30.672				
3,300.0	3,290.7	3,255.8	3,233.9	8.1	9.6	-126.87	-163.1	354.4	484.0	468.2	15.75	30.727				

CC - Min centre to center distance or convergent point, SF - min separation factor, ES - min ellipse separation

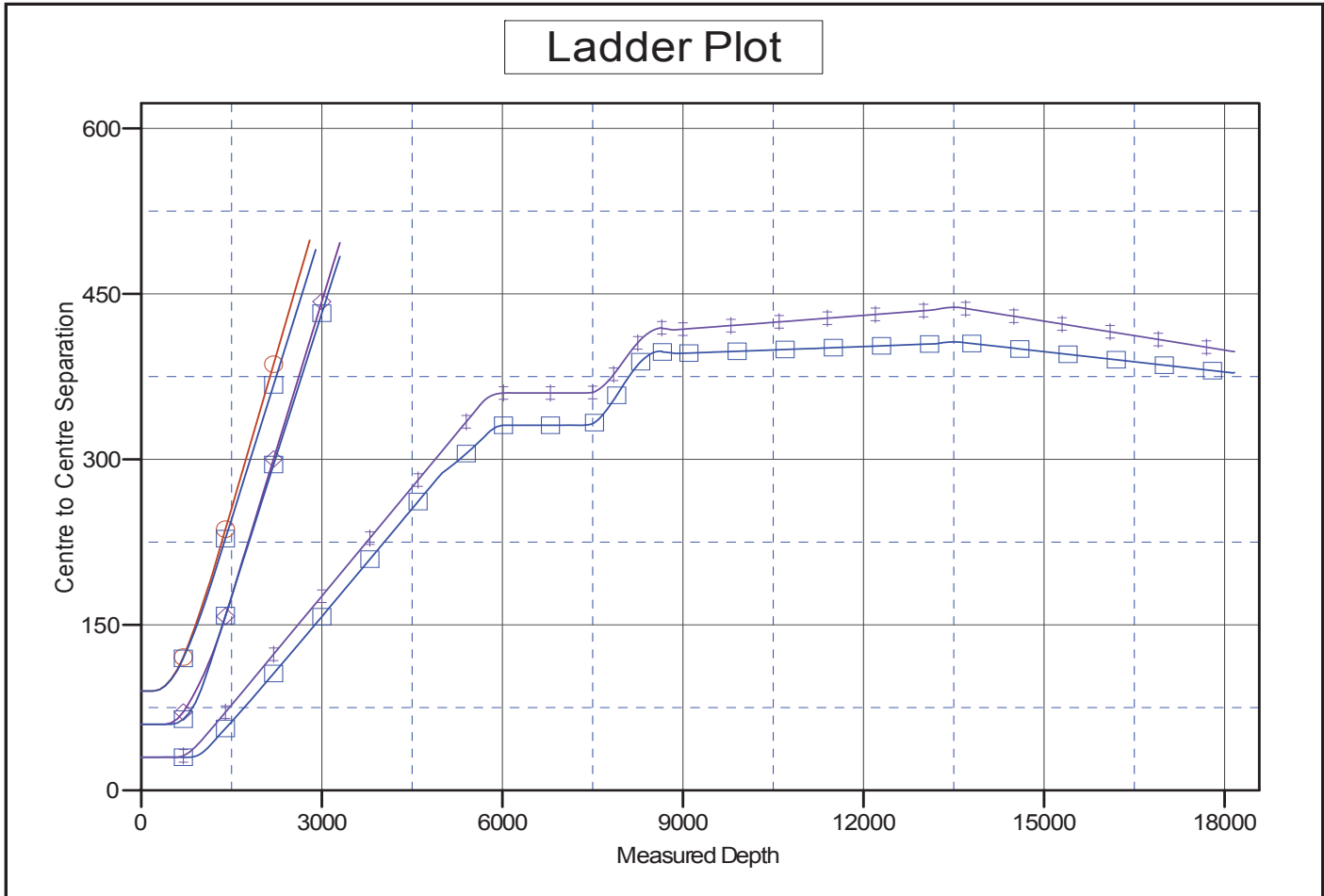
<b>Company:</b>	Clear Creek Resource Partners	<b>Local Co-ordinate Reference:</b>	Well Salt Ranch Fee 502-1807H
<b>Project:</b>	SEC.18-T11N-R64W	<b>TVD Reference:</b>	WELL @ 5626.0ft (Original Well Elev)
<b>Reference Site:</b>	Salt Ranch Fee 1807H East Pad Sec.18-T11N-R64W	<b>MD Reference:</b>	WELL @ 5626.0ft (Original Well Elev)
<b>Site Error:</b>	0.0 ft	<b>North Reference:</b>	True
<b>Reference Well:</b>	Salt Ranch Fee 502-1807H	<b>Survey Calculation Method:</b>	Minimum Curvature
<b>Well Error:</b>	0.0 ft	<b>Output errors are at</b>	2.00 sigma
<b>Reference Wellbore</b>	Wellbore #1	<b>Database:</b>	US_EDM
<b>Reference Design:</b>	Plan #1 (9-26-17)	<b>Offset TVD Reference:</b>	Offset Datum

Offset Design													Offset Site Error:	0.0 ft		
Survey Program: 0-MWD													Salt Ranch Fee 1807H East Pad Sec.18-T11N-R64W - Salt Ranch Fee 503-1807H - Wellbore #1 - Plan		Offset Well Error:	0.0 ft
Reference				Offset			Semi Major Axis			Distance			Warning			
Measured Depth (ft)	Vertical Depth (ft)	Measured Depth (ft)	Vertical Depth (ft)	Reference (ft)	Offset (ft)	Highside Toolface (°)	Offset Wellbore Centre +N/-S (ft)	Offset Wellbore Centre +E/-W (ft)	Between Centres (ft)	Between Ellipses (ft)	Minimum Separation (ft)	Separation Factor				
0.0	0.0	0.0	0.0	0.0	0.0	-89.30	0.7	-60.0	60.0							
100.0	100.0	100.0	100.0	0.1	0.1	-89.30	0.7	-60.0	60.0	59.8	0.22	266.860				
200.0	200.0	200.0	200.0	0.3	0.3	-89.30	0.7	-60.0	60.0	59.3	0.67	88.953				
300.0	300.0	300.0	300.0	0.6	0.6	-89.30	0.7	-60.0	60.0	58.9	1.12	53.372				
400.0	400.0	400.0	400.0	0.8	0.8	-89.30	0.7	-60.0	60.0	58.4	1.57	38.123 CC, ES				
500.0	500.0	498.5	498.5	1.0	1.0	-89.70	0.3	-61.2	61.2	59.2	2.00	30.549				
600.0	600.0	596.9	596.8	1.2	1.2	-90.78	-0.9	-64.8	64.9	62.4	2.43	26.710				
700.0	700.0	695.0	694.7	1.5	1.4	-92.34	-2.9	-70.8	71.0	68.2	2.86	24.800				
800.0	800.0	792.8	792.1	1.7	1.7	-94.11	-5.7	-79.1	79.7	76.4	3.31	24.098 SF				
900.0	900.0	890.1	888.8	1.9	1.9	47.80	-9.3	-89.7	90.0	86.3	3.72	24.180				
1,000.0	999.9	987.1	984.8	2.1	2.2	47.52	-13.6	-102.7	101.1	97.0	4.13	24.464				
1,100.0	1,099.7	1,083.8	1,080.2	2.3	2.5	47.93	-18.7	-117.8	112.9	108.3	4.56	24.741				
1,146.4	1,145.9	1,128.5	1,124.1	2.4	2.7	48.30	-21.3	-125.6	118.6	113.8	4.77	24.860				
1,200.0	1,199.3	1,180.0	1,174.6	2.5	2.9	48.79	-24.5	-135.2	125.6	120.6	5.02	25.043				
1,300.0	1,298.9	1,275.7	1,268.0	2.7	3.3	49.37	-31.1	-154.7	140.6	135.1	5.49	25.608				
1,400.0	1,398.5	1,371.8	1,361.4	3.0	3.8	49.61	-38.3	-176.4	157.9	151.9	5.99	26.379				
1,500.0	1,498.1	1,470.2	1,456.8	3.2	4.2	49.76	-46.0	-199.2	175.7	169.2	6.49	27.064				
1,600.0	1,597.7	1,568.6	1,552.2	3.5	4.7	49.88	-53.6	-221.9	193.5	186.5	7.01	27.611				
1,700.0	1,697.3	1,667.0	1,647.6	3.7	5.2	49.99	-61.2	-244.7	211.3	203.8	7.53	28.051				
1,800.0	1,796.8	1,765.4	1,743.1	4.0	5.7	50.07	-68.9	-267.4	229.2	221.1	8.07	28.411				
1,900.0	1,896.4	1,863.8	1,838.5	4.2	6.2	50.15	-76.5	-290.2	247.0	238.4	8.60	28.708				
2,000.0	1,996.0	1,962.2	1,933.9	4.5	6.7	50.21	-84.1	-312.9	264.8	255.7	9.15	28.955				
2,100.0	2,095.6	2,060.6	2,029.3	4.8	7.2	50.27	-91.8	-335.7	282.6	272.9	9.69	29.163				
2,200.0	2,195.2	2,159.0	2,124.8	5.1	7.8	50.31	-99.4	-358.4	300.4	290.2	10.24	29.340				
2,300.0	2,294.8	2,257.4	2,220.2	5.3	8.3	50.36	-107.0	-381.2	318.3	307.5	10.79	29.491				
2,400.0	2,394.4	2,355.8	2,315.6	5.6	8.8	50.40	-114.7	-403.9	336.1	324.7	11.35	29.622				
2,500.0	2,494.0	2,454.2	2,411.1	5.9	9.3	50.43	-122.3	-426.7	353.9	342.0	11.90	29.735				
2,600.0	2,593.6	2,552.6	2,506.5	6.2	9.8	50.46	-129.9	-449.4	371.7	359.3	12.46	29.834				
2,700.0	2,693.1	2,651.0	2,601.9	6.4	10.3	50.49	-137.6	-472.2	389.6	376.5	13.02	29.921				
2,800.0	2,792.7	2,749.4	2,697.3	6.7	10.9	50.52	-145.2	-494.9	407.4	393.8	13.58	29.998				
2,900.0	2,892.3	2,847.8	2,792.8	7.0	11.4	50.54	-152.8	-517.7	425.2	411.1	14.14	30.067				
3,000.0	2,991.9	2,946.2	2,888.2	7.3	11.9	50.57	-160.5	-540.4	443.0	428.3	14.70	30.128				
3,100.0	3,091.5	3,044.5	2,983.6	7.6	12.4	50.59	-168.1	-563.2	460.8	445.6	15.27	30.182				
3,200.0	3,191.1	3,142.9	3,079.1	7.8	13.0	50.61	-175.7	-585.9	478.7	462.8	15.83	30.232				
3,300.0	3,290.7	3,241.3	3,174.5	8.1	13.5	50.62	-183.4	-608.7	496.5	480.1	16.40	30.276				

CC - Min centre to center distance or convergent point, SF - min separation factor, ES - min ellipse separation

<b>Company:</b>	Clear Creek Resource Partners	<b>Local Co-ordinate Reference:</b>	Well Salt Ranch Fee 502-1807H
<b>Project:</b>	SEC.18-T11N-R64W	<b>TVD Reference:</b>	WELL @ 5626.0ft (Original Well Elev)
<b>Reference Site:</b>	Salt Ranch Fee 1807H East Pad Sec.18-T11N-R64W	<b>MD Reference:</b>	WELL @ 5626.0ft (Original Well Elev)
<b>Site Error:</b>	0.0 ft	<b>North Reference:</b>	True
<b>Reference Well:</b>	Salt Ranch Fee 502-1807H	<b>Survey Calculation Method:</b>	Minimum Curvature
<b>Well Error:</b>	0.0 ft	<b>Output errors are at</b>	2.00 sigma
<b>Reference Wellbore</b>	Wellbore #1	<b>Database:</b>	US_EDM
<b>Reference Design:</b>	Plan #1 (9-26-17)	<b>Offset TVD Reference:</b>	Offset Datum

Reference Depths are relative to WELL @ 5626.0ft (Original Well Elev)      Coordinates are relative to: Salt Ranch Fee 502-1807H  
 Offset Depths are relative to Offset Datum      Coordinate System is US State Plane 1983, Colorado Northern Zone  
 Central Meridian is -105.500000      Grid Convergence at Surface is: 0.59°

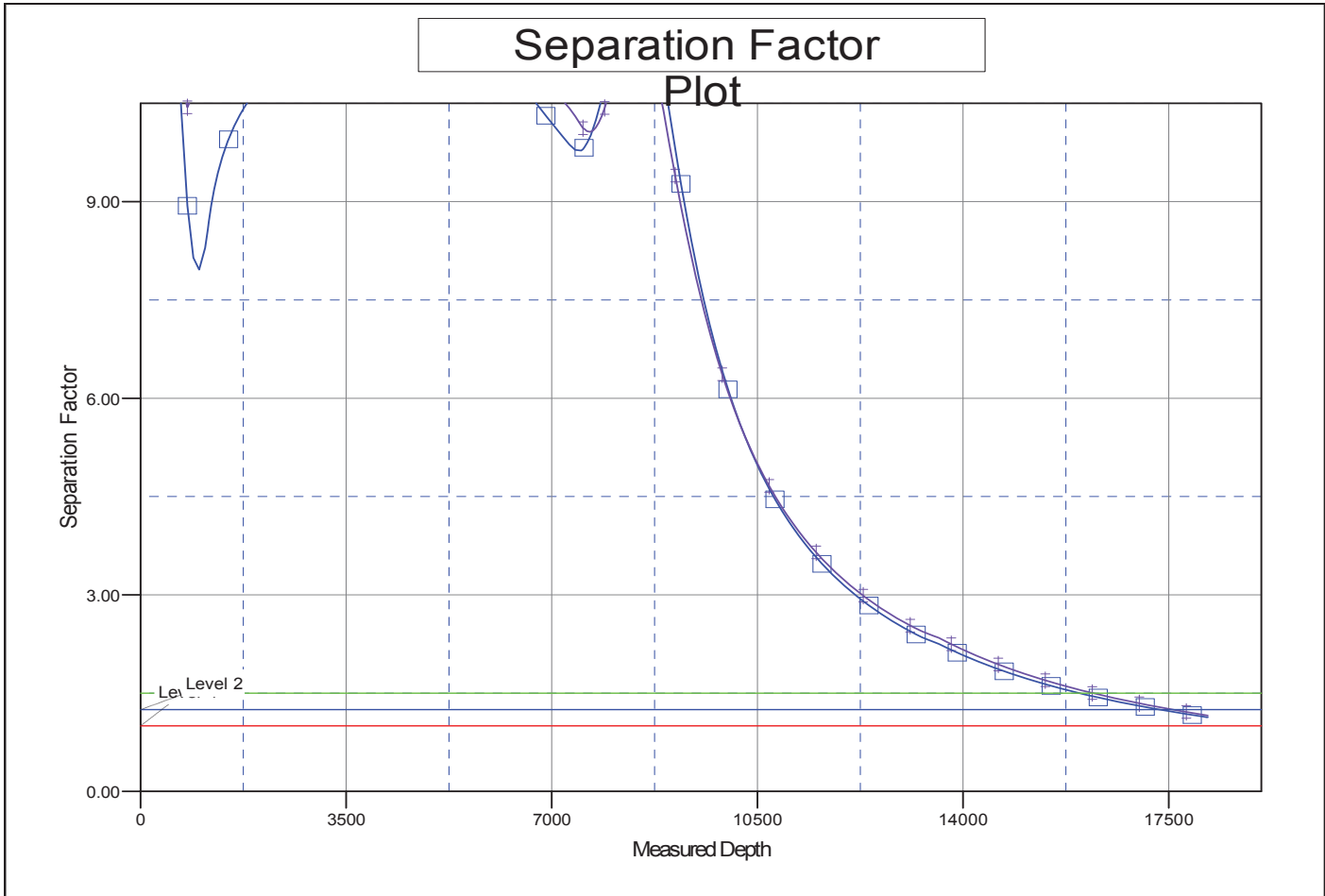


LEGEND

- e 204-1807H, Wellbore #1, Plan #1 (9-26-17) V0    Salt Ranch Fee 201-1807H, Wellbore #1, Plan #1 (9-26-17) V0    Salt Ranch Fee 202-1807H, Wellbore #1, P
- e 503-1807H, Wellbore #1, Plan #1 (9-26-17) V0    Salt Ranch Fee 501-1807H, Wellbore #1, Plan #1 (9-26-17) V0    Salt Ranch Fee 203-1807H, Wellbore #1, P

<b>Company:</b>	Clear Creek Resource Partners	<b>Local Co-ordinate Reference:</b>	Well Salt Ranch Fee 502-1807H
<b>Project:</b>	SEC.18-T11N-R64W	<b>TVD Reference:</b>	WELL @ 5626.0ft (Original Well Elev)
<b>Reference Site:</b>	Salt Ranch Fee 1807H East Pad Sec.18-T11N-R64W	<b>MD Reference:</b>	WELL @ 5626.0ft (Original Well Elev)
<b>Site Error:</b>	0.0 ft	<b>North Reference:</b>	True
<b>Reference Well:</b>	Salt Ranch Fee 502-1807H	<b>Survey Calculation Method:</b>	Minimum Curvature
<b>Well Error:</b>	0.0 ft	<b>Output errors are at</b>	2.00 sigma
<b>Reference Wellbore</b>	Wellbore #1	<b>Database:</b>	US_EDM
<b>Reference Design:</b>	Plan #1 (9-26-17)	<b>Offset TVD Reference:</b>	Offset Datum

Reference Depths are relative to WELL @ 5626.0ft (Original Well Elev)      Coordinates are relative to: Salt Ranch Fee 502-1807H  
 Offset Depths are relative to Offset Datum      Coordinate System is US State Plane 1983, Colorado Northern Zone  
 Central Meridian is -105.500000      Grid Convergence at Surface is: 0.59°



LEGEND

- e 204-1807H, Wellbore #1, Plan #1 (9-26-17) V0    ■ Salt Ranch Fee 201-1807H, Wellbore #1, Plan #1 (9-26-17) V0    ■ Salt Ranch Fee 202-1807H, Wellbore #1, P
- e 503-1807H, Wellbore #1, Plan #1 (9-26-17) V0    ■ Salt Ranch Fee 501-1807H, Wellbore #1, Plan #1 (9-26-17) V0    ■ Salt Ranch Fee 203-1807H, Wellbore #1, P