

T7N, R81W, 6th P.M.

SandRidge Exploration & Production, LLC

Well location, Beaver Creek 0881 1-3H Pilot Hole located as shown in the NW1/4NE1/4 of Section 10, T7N, R81W, 6th P.M., Jackson County, Colorado.

BASIS OF BEARINGS:

US STATE PLANE 1983
CO NORTH 0501 GRID

BASIS OF ELEVATION

SPOT ELEVATION AT THE NW CORNER OF SECTION 10, T7N, R81W, 6TH PM, TAKEN FROM THE COALMONT QUADRANGLE, USGS 7.5 MIN QUAD (TOPOGRAPHIC MAP) WITH SAID ELEVATION MARKED AS BEING 8251 FEET.

LEGEND

90° SYMBOL
FOUND CORNER
PROPOSED WELL
PROPOSED BHL/LPL



GRAPHIC SCALE 1"=1000'



THIS IS TO CERTIFY THAT THE ABOVE PLAT WAS PREPARED FROM FIELD NOTES OF ACTUAL SURVEYS MADE BY ME OR UNDER MY SUPERVISION AND THAT THE SAME ARE TRUE AND CORRECT TO THE BEST OF MY KNOWLEDGE AND BELIEF.



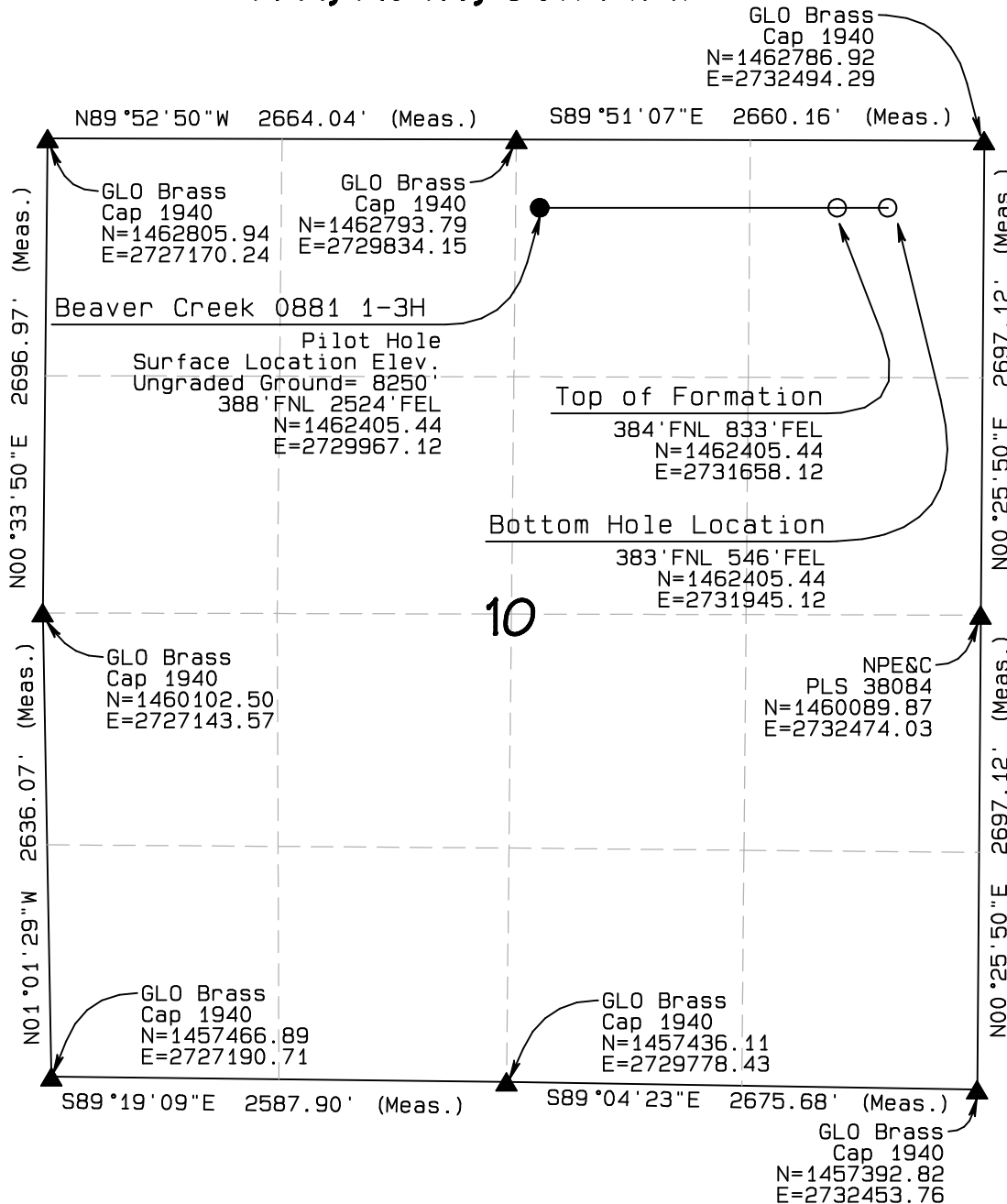
RANDALL R. MILLER
COLORADO PLS NO. 38084 9/6/2017

NORTH PARK ENGINEERING & CONSULTING, INC.

P.O. BOX 395
WALDEN, CO 80480
(970) 723-3725

DATE OF FIELD WORK: SEP 15, 2016 DRAWING COMPLETION: SEP 6, 2017

SURVEYED BY: ADL DRAWN BY: ADL/RRM CHECKED BY: RRM



NAD 83 (TOP OF FORMATION)

LATITUDE=40.598687°N
LONGITUDE=106.466341°W

NAD 83 (SURFACE LOCATION)

LATITUDE=40.59863661°N
LONGITUDE=106.4724301°W PDOP = 1.446

NAD 83 (TARGET BOTTOM HOLE)

LATITUDE=40.598696°N
LONGITUDE=106.465308°W