



SRC ENERGY

**Operator:** SRC Energy  
**Well Name:** Hertzke 1-33  
**Legal:** SWSW, Section 1, Township 5N, Range 67W  
**Location:** Weld County, CO  
**API:** 05-123-20035

Deepest Water Well  
 Within 1 Mile = 300'





### Wellbore History

Spud Date: 1/15/2001  
 Surf Csg: 8.625", 24# @ 370' – 260 sx  
 Prod Csg: 4.5", 11.6# @ 7320' – 150 sx  
 TOC: 6380' (CBL)  
 Perfs: CODL: 7186'-7200'

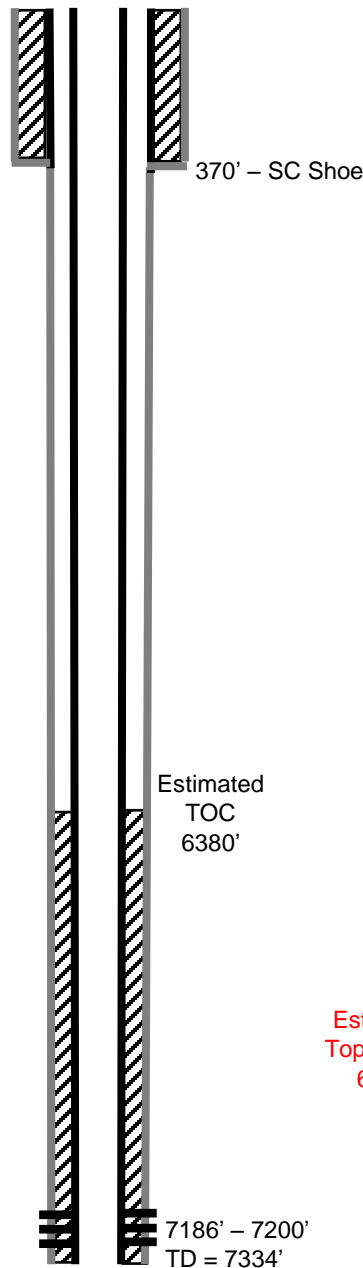
### P&A Procedure

Set CIBP @ 7111'  
 Set 37 sx on top of CIBP (388' plug)  
 Perf @ 2500'  
 Set CICR @ 2400'  
 Circ 72 sx through CICR  
 Set 10 sx on top of CICR (132' plug)  
 Cut Casing @ 470'  
 Pmp 200 sx @ 520' to surface

### Key

-  Existing Cement Coverage
-  CICR
-  Cement Pumped
-  CIBP

### Current



### Proposed

