



SRC ENERGY

Operator: SRC Energy
Well Name: Aufrect N 2-16
Legal: SESE, Section 2, Township 5N, Range 67W
Location: Weld County, CO
API: 05-123-26503

Deepest Water Well
Within 1 Mile = 800'





Wellbore History

Spud Date: 2/15/2008
Surf Csg: 8.625", 24# @ 906' - 462 sx
Prod Csg: 4.5", 11.6# @ 7810' - 900 sx
TOC: 980' (CBL)
Perfs: CODL: 7182'-7204'

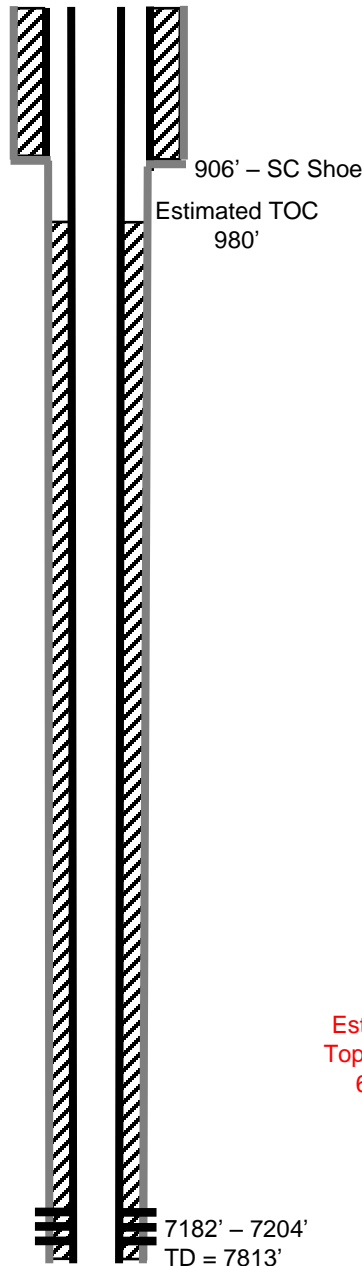
P&A Procedure

Set CIBP @ 7107'
Set 42 sx on top of CIBP (422' plug)
Perforate @ 960'
Circ 258 sx through perfs (960' annulus plug)
Pmp 92 sx @ 960' to surface

Key

-  Existing Cement Coverage
-  CICR
-  Cement Pumped
-  CIBP

Current



Proposed

