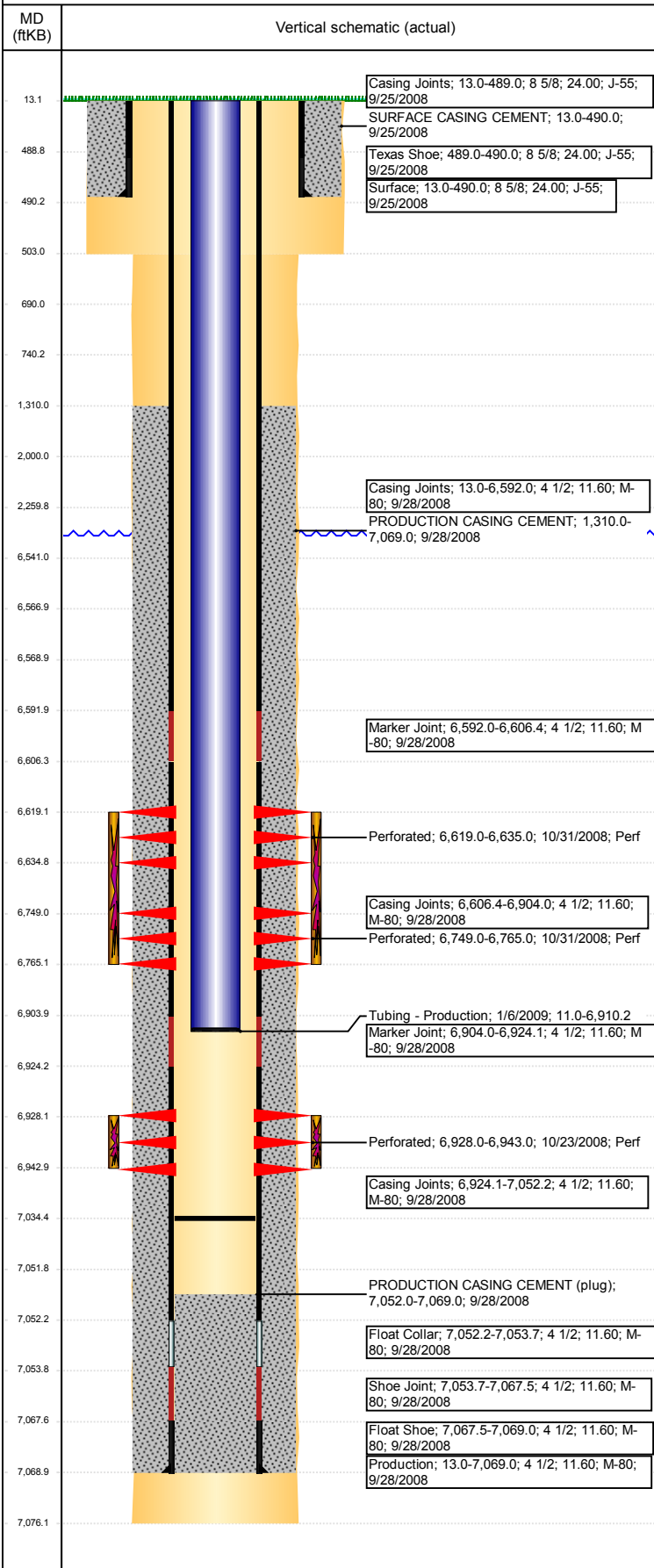


**Well Name: DPG F12-28**

VERTICAL - ORIGINAL HOLE, 10/26/2017 11:11:16 AM



## Well Header

API 05-123-28053	Business Unit DJ BASIN	District 15	Well Config VERTICAL
Original KB Elevation (ft) 4,618	KB - GL / MSL (ftKB) 13.00	Spud Date 9/25/2008	P & A Date

## Comment

318A.e. LOCATION!!

## Directions To Well

From Holly St. and E. 18th St., go Northeast 0.25 mile, then East 0.5 miles, then Northeast 0.5 miles, then West 0.25 miles to location

## Congressional Location

Quarter 3 SE	Quarter 4 SW	Section 1	Township 5	Twntshp N/S Dir N	Range 65	Range E/W Dir W
-----------------	-----------------	--------------	---------------	----------------------	-------------	--------------------

## Bottom Hole Location

North-South Distance (ft)	From N or S Line	East-West Distance (ft)	From E or W Line
---------------------------	------------------	-------------------------	------------------

## Plug Back Total Depths

Date	Depth (ftKB)	Method	Com
9/27/2008	7,052.0	CASING TALLY	FLOAT COLLAR
10/14/2008	7,020.0	CASED HOLE LOG	DEPTH LOGGER
1/5/2009	7,034.6	TAG	FILL

## Wellbore Sections

Section Des	Size (in)	Act Top, MD (ftKB)	Act Btm, MD (ftKB)
SURFACE	12 1/4	13	503
PRODUCTION	7 7/8	503	7,076

## Zone Statuses

Zone Name	Status Date	Status	Fluid Type	Job	Prod Method
NIOBRARA	11/7/2008	PR	Water	DRILLING/CO...	Flowing
NIOBRARA	2/4/2010	PR		DRILLING/CO...	
CODELL	11/7/2008	PR	Water	DRILLING/CO...	Flowing
CODELL	2/4/2010	PR			
CODELL	11/29/2016	SI			

## Casing Strings

### Surface, 490.0ftKB

Casing Description	Run Date	OD (in)	Wt/Len (l...)	Grade	Top, MD (ft...)	MD (ftKB)
Surface	9/25/2008	8 5/8	24.00	J-55	13.0	490.0

### Production, 7,069.0ftKB

Casing Description	Run Date	OD (in)	Wt/Len (l...)	Grade	Top, MD (ft...)	MD (ftKB)
Production	9/28/2008	4 1/2	11.60	M-80	13.0	7,069.0

## Cement

Description	Top Depth (ftKB)	Bottom Depth (ftKB)
SURFACE CASING CEMENT	13.0	490.0
PRODUCTION CASING CEMENT	1,310.0	7,069.0
DUMP BAIL	6,541.0	6,567.0
BALANCE PLUG	2,000.0	2,260.0
SHOE PLUG	690.0	740.0
SHOE PLUG	13.1	690.0

## Tubing Strings

Tubing Description	Run Date	String...	ID (in)	Wt (lb/ft)	Grade	Len (ft)	Set De...
Tubing - Production	1/6/2009	2 3/8	2.00	4.70	J-55	6,899.21	6,909.6

## Tubing Components

Item Des	OD (in)	Wt (lb/ft)	Grade	Jts	Len (ft)	Btm (ftKB)	Btm (TVD) (ftKB)
Tubing	2 3/8	4.70	J-55	223	6,897.71	6,908.7	
Pump Seating	2 3/8			1	1.10	6,909.8	6,909.2
Nipple							
Notched collar	2 3/8			1	0.40	6,910.2	6,909.6

## Other In Hole

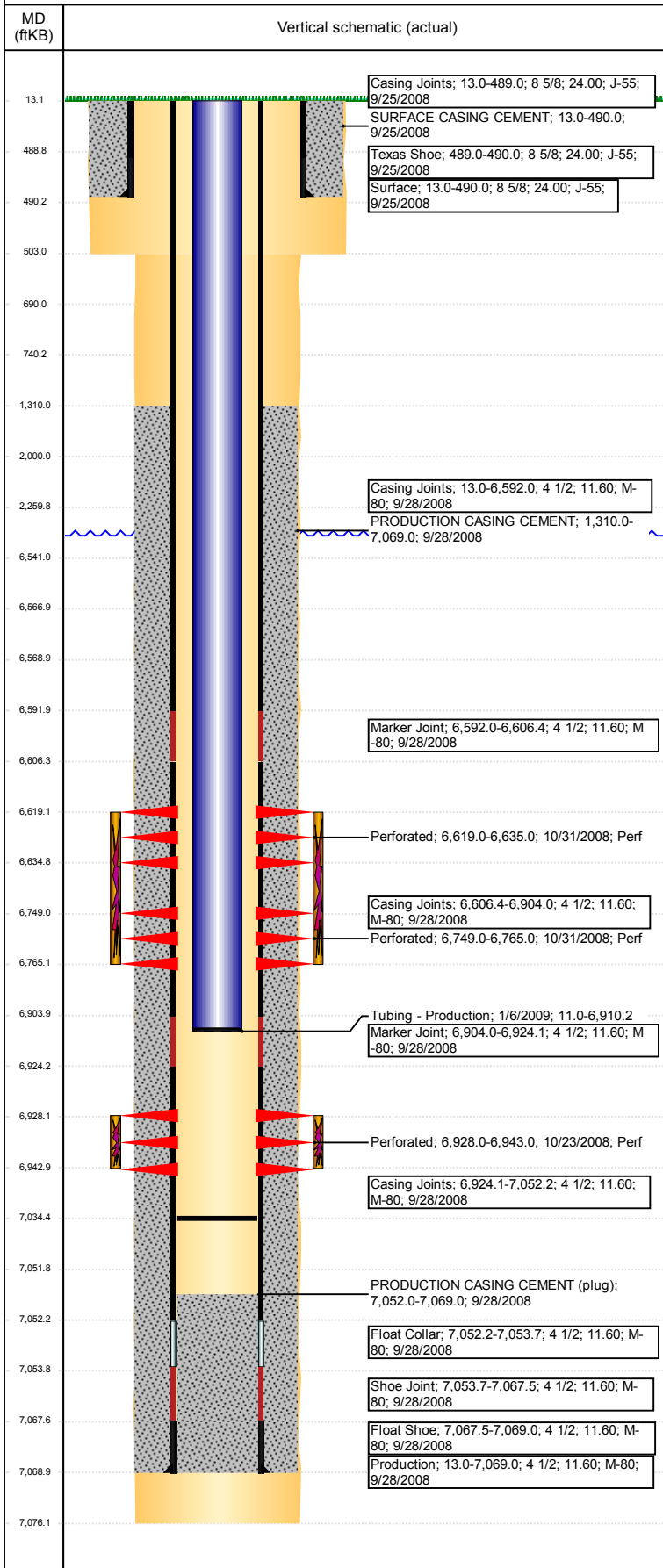
Run Date	Des	OD (in)	Top (ftKB)	Btm (ftKB)
10/20/2017	Cast Iron Bridge Plug	4	6,567.0	6,569.0

## Logs

Date	Type	Top, MD (ftKB)	Btm, MD (ftKB)
10/14/2008	CBL/CCL/GR	1,310.0	6,002.0

**Well Name: DPG F12-28**

VERTICAL - ORIGINAL HOLE, 10/26/2017 11:11:16 AM



Perforation Data					
Linked Zone	Bnch/St g	Sum of Entered Shot Total	Top (ftKB)	Btm (ftKB)	Date
NIOBRARA, ORIGINAL HOLE	A	32	6,619.00	6,635.00	10/31/2008
NIOBRARA, ORIGINAL HOLE	B	32	6,749.00	6,765.00	10/31/2008
CODELL, ORIGINAL HOLE	01	60	6,928.00	6,943.00	10/23/2008
<b>Total (Sum)</b>		<b>124</b>			

Stimulation Intervals		
Start Date 10/31/2008	Primary Job Type DRILLING/COMPLETION - ORIGINAL	
Technical Result Success	Tech Result Details According to Plan	Tech Result Note
Comment (CODELL): REVERSE STEP RATE RESULTS PO 10 NWB 803 PSI WB 108 PSI PPF 306 PSI FOR A TOTAL OF 1217 PSI OF FRICTION PRE JOB 5 MINUTE OF 1271 PSI RAISED FRAC RATE TO 25 BPM WENT TO 34# SILVERSTIM RAN ONE WB OF X-LINKED PAD ONE WB OF 0.5 PSA 20/40 AND BACK TO X-LINKED PAD TREATMENT WENT OKAY HAD ISSUES WITH THE PROPPANT COCENTRATIONS FROM 2 PSA THROUGH OUT THE JOB AVG VISC 29.9 CPS AVG TEMP 67.4F AVG PH 10.08 POST JOB 5 MINUTE OF 3229 PSI		
Start Date 10/31/2008	Primary Job Type DRILLING/COMPLETION - ORIGINAL	
Technical Result	Tech Result Details	Tech Result Note
Comment (NIOBRARA): TREATMENT WAS OKAY HAD DENSITY ISSUES AVG VISC 23.9 CPS AVG TEMP 67.6F AVG PH 10.03 POST JOB 5 MINUTE OF 3436 PSI		