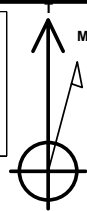


Geodetic System: US State Plane 1983
 Datum: North American Datum 1983
 Ellipsoid: GRS 1980
 Zone: Colorado Northern Zone
 System Datum: Mean Sea Level
 Local North: True

Project: Weld County, CO NAD 83
 Site: Will Trust 6-62-3_2 NWSW Pad
 Well: Will Trust 6-62-3-3225B
 Wellbore: OH
 Design: Plan 2



Azimuths to True North
 Magnetic North: 8.10°

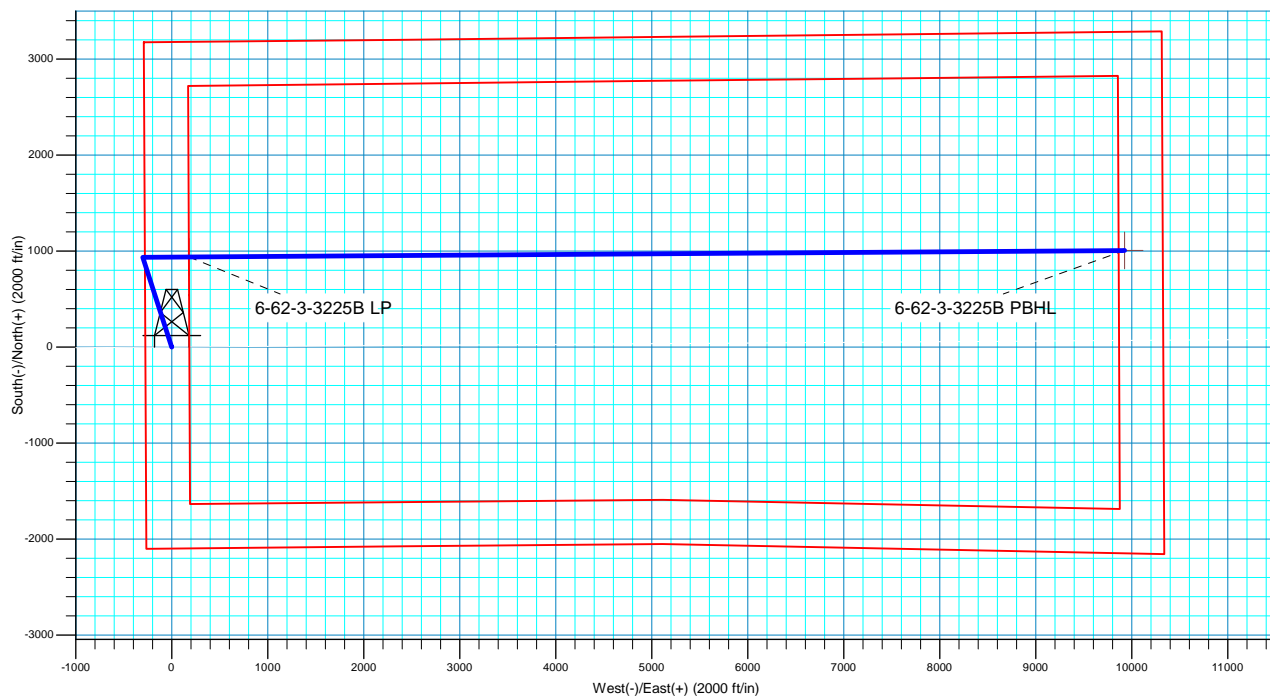
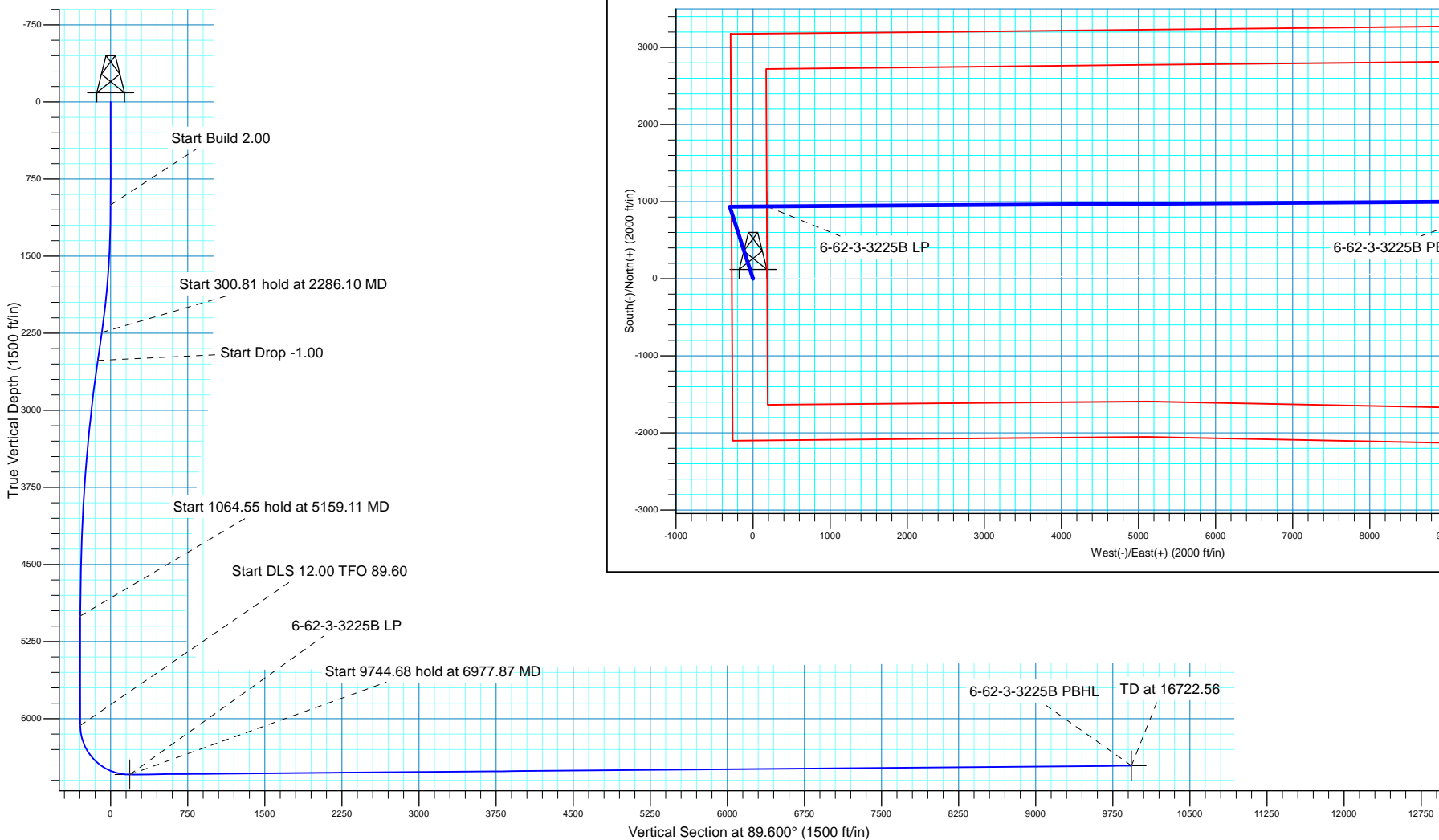
Magnetic Field
 Strength: 52303.3snT
 Dip Angle: 67.02°
 Date: 7/20/2017
 Model: HDGM

SECTION DETAILS

MD	Inc	Azi	TVD	+N/-S	+E/-W	Dleg	TFace	VSect
0.00	0.00	0.000	0.00	0.00	0.00	0.00	0.00	0.00
1000.00	0.00	0.000	1000.00	0.00	0.00	0.00	0.00	0.00
2286.10	25.72	342.122	2243.33	270.16	-87.14	2.00	342.12	-85.26
2586.91	25.72	342.122	2514.33	394.41	-127.22	0.00	0.00	-124.46
5159.11	0.00	0.000	5001.00	934.74	-301.51	1.00	180.00	-294.98
6223.66	0.00	0.000	6065.55	934.74	-301.51	0.00	0.00	-294.98
6977.87	90.51	89.600	6543.00	938.10	180.16	12.00	89.60	186.70
16722.56	90.51	89.600	6457.00	1006.05	9924.22	0.00	0.00	9931.01

WELL DETAILS: Will Trust 6-62-3-3225B

		GL 4820' & KB 20' @ 4840.00ft		4820.00	Longitude
+N/-S	+E/-W	Northing	Easting	Latitude	
0.00	0.00	1432534.66	3328908.94	40° 30' 52.869 N	104° 19' 1.222 W





Bill Barrett Corporation

Bill Barrett Corp.

Weld County, CO NAD 83

Will Trust 6-62-3_2 NWSW Pad

Will Trust 6-62-3-3225B

OH

Plan: Plan 2

Standard Planning Report

20 July, 2017



Scientific Drilling

www.scientificdrilling.com



Database:	Casper District	Local Co-ordinate Reference:	Well Will Trust 6-62-3-3225B
Company:	Bill Barrett Corp.	TVD Reference:	GL 4820' & KB 20' @ 4840.00ft
Project:	Weld County, CO NAD 83	MD Reference:	GL 4820' & KB 20' @ 4840.00ft
Site:	Will Trust 6-62-3_2 NWSW Pad	North Reference:	True
Well:	Will Trust 6-62-3-3225B	Survey Calculation Method:	Minimum Curvature
Wellbore:	OH		
Design:	Plan 2		

Project	Weld County, CO NAD 83		
Map System:	US State Plane 1983	System Datum:	Mean Sea Level
Geo Datum:	North American Datum 1983		
Map Zone:	Colorado Northern Zone		

Site		Will Trust 6-62-3_2 NWSW Pad, Site Center : Will Trust 6-62-03-3225A2			
Site Position:		Northing:	1,432,534.69 usft	Latitude:	40° 30' 52.870 N
From:	Lat/Long	Easting:	3,328,908.95 usft	Longitude:	104° 19' 1.222 W
Position Uncertainty:	0.00 ft	Slot Radius:	13.200 in	Grid Convergence:	0.76 °

Well	Will Trust 6-62-3-3225B, 2099' FSL 275' FWL Sec 3 T6N R62W					
Well Position	+N/-S	-0.02 ft	Northing:	1,432,534.67 usft	Latitude:	40° 30' 52.869 N
	+E/-W	0.00 ft	Easting:	3,328,908.95 usft	Longitude:	104° 19' 1.222 W
Position Uncertainty		0.00 ft	Wellhead Elevation:	0.00 ft	Ground Level:	4,820.00 ft

Wellbore	OH				
Magnetics	Model Name	Sample Date	Declination (°)	Dip Angle (°)	Field Strength (nT)
	BGGM2016	3/13/2017	8.15	67.05	52,555
	HDGM	7/20/2017	8.10	67.02	52,303

Design	Plan 2			
Audit Notes:				
Version:	Phase:	PLAN	Tie On Depth:	0.00
Vertical Section:	Depth From (TVD) (ft)	+N/-S (ft)	+E/-W (ft)	Direction (°)
	0.00	0.00	0.00	89.600

Plan Sections										
Measured Depth (ft)	Inclination (°)	Azimuth (°)	Vertical Depth (ft)	+N/-S (ft)	+E/-W (ft)	Dogleg Rate (°/100ft)	Build Rate (°/100ft)	Turn Rate (°/100ft)	TFO (°)	Target
0.00	0.00	0.000	0.00	0.00	0.00	0.00	0.00	0.00	0.00	
1,000.00	0.00	0.000	1,000.00	0.00	0.00	0.00	0.00	0.00	0.00	
2,286.10	25.72	342.122	2,243.33	270.16	-87.14	2.00	2.00	0.00	342.12	
2,586.91	25.72	342.122	2,514.33	394.41	-127.22	0.00	0.00	0.00	0.00	
5,159.11	0.00	0.000	5,001.00	934.74	-301.51	1.00	-1.00	0.00	180.00	
6,223.66	0.00	0.000	6,065.55	934.74	-301.51	0.00	0.00	0.00	0.00	
6,977.87	90.51	89.600	6,543.00	938.10	180.16	12.00	12.00	11.88	89.60	
16,722.56	90.51	89.600	6,457.00	1,006.05	9,924.22	0.00	0.00	0.00	0.00	6-62-3-3225B PBHL

Database:	Casper District	Local Co-ordinate Reference:	Well Will Trust 6-62-3-3225B
Company:	Bill Barrett Corp.	TVD Reference:	GL 4820' & KB 20' @ 4840.00ft
Project:	Weld County, CO NAD 83	MD Reference:	GL 4820' & KB 20' @ 4840.00ft
Site:	Will Trust 6-62-3_2 NWSW Pad	North Reference:	True
Well:	Will Trust 6-62-3-3225B	Survey Calculation Method:	Minimum Curvature
Wellbore:	OH		
Design:	Plan 2		

Planned Survey									
Measured Depth (ft)	Inclination (°)	Azimuth (°)	Vertical Depth (ft)	+N/-S (ft)	+E/-W (ft)	Vertical Section (ft)	Dogleg Rate (°/100ft)	Build Rate (°/100ft)	Turn Rate (°/100ft)
0.00	0.00	0.000	0.00	0.00	0.00	0.00	0.00	0.00	0.00
100.00	0.00	0.000	100.00	0.00	0.00	0.00	0.00	0.00	0.00
200.00	0.00	0.000	200.00	0.00	0.00	0.00	0.00	0.00	0.00
300.00	0.00	0.000	300.00	0.00	0.00	0.00	0.00	0.00	0.00
400.00	0.00	0.000	400.00	0.00	0.00	0.00	0.00	0.00	0.00
500.00	0.00	0.000	500.00	0.00	0.00	0.00	0.00	0.00	0.00
600.00	0.00	0.000	600.00	0.00	0.00	0.00	0.00	0.00	0.00
700.00	0.00	0.000	700.00	0.00	0.00	0.00	0.00	0.00	0.00
800.00	0.00	0.000	800.00	0.00	0.00	0.00	0.00	0.00	0.00
900.00	0.00	0.000	900.00	0.00	0.00	0.00	0.00	0.00	0.00
1,000.00	0.00	0.000	1,000.00	0.00	0.00	0.00	0.00	0.00	0.00
Start Build 2.00									
1,100.00	2.00	342.122	1,099.98	1.66	-0.54	-0.52	2.00	2.00	0.00
1,200.00	4.00	342.122	1,199.84	6.64	-2.14	-2.10	2.00	2.00	0.00
1,300.00	6.00	342.122	1,299.45	14.94	-4.82	-4.71	2.00	2.00	0.00
1,400.00	8.00	342.122	1,398.70	26.53	-8.56	-8.37	2.00	2.00	0.00
1,500.00	10.00	342.122	1,497.47	41.42	-13.36	-13.07	2.00	2.00	0.00
1,600.00	12.00	342.122	1,595.62	59.58	-19.22	-18.80	2.00	2.00	0.00
1,700.00	14.00	342.122	1,693.06	80.99	-26.12	-25.56	2.00	2.00	0.00
1,800.00	16.00	342.122	1,789.64	105.62	-34.07	-33.33	2.00	2.00	0.00
1,900.00	18.00	342.122	1,885.27	133.44	-43.04	-42.11	2.00	2.00	0.00
2,000.00	20.00	342.122	1,979.82	164.43	-53.04	-51.89	2.00	2.00	0.00
2,100.00	22.00	342.122	2,073.17	198.53	-64.04	-62.65	2.00	2.00	0.00
2,200.00	24.00	342.122	2,165.21	235.71	-76.03	-74.38	2.00	2.00	0.00
2,286.10	25.72	342.122	2,243.33	270.16	-87.14	-85.26	2.00	2.00	0.00
Start 300.81 hold at 2286.10 MD									
2,300.00	25.72	342.122	2,255.86	275.91	-89.00	-87.07	0.00	0.00	0.00
2,400.00	25.72	342.122	2,345.95	317.21	-102.32	-100.10	0.00	0.00	0.00
2,500.00	25.72	342.122	2,436.04	358.51	-115.64	-113.14	0.00	0.00	0.00
2,586.91	25.72	342.122	2,514.33	394.41	-127.22	-124.47	0.00	0.00	0.00
Start Drop -1.00									
2,600.00	25.59	342.122	2,526.14	399.81	-128.96	-126.17	1.00	-1.00	0.00
2,700.00	24.59	342.122	2,616.70	440.16	-141.98	-138.90	1.00	-1.00	0.00
2,800.00	23.59	342.122	2,707.99	479.01	-154.51	-151.16	1.00	-1.00	0.00
2,900.00	22.59	342.122	2,799.97	516.34	-166.55	-162.94	1.00	-1.00	0.00
3,000.00	21.59	342.122	2,892.63	552.13	-178.09	-174.24	1.00	-1.00	0.00
3,100.00	20.59	342.122	2,985.93	586.38	-189.14	-185.04	1.00	-1.00	0.00
3,200.00	19.59	342.122	3,079.84	619.07	-199.69	-195.36	1.00	-1.00	0.00
3,300.00	18.59	342.122	3,174.34	650.20	-209.73	-205.18	1.00	-1.00	0.00
3,400.00	17.59	342.122	3,269.40	679.75	-219.26	-214.51	1.00	-1.00	0.00
3,500.00	16.59	342.122	3,364.98	707.72	-228.28	-223.34	1.00	-1.00	0.00
3,600.00	15.59	342.122	3,461.06	734.10	-236.79	-231.66	1.00	-1.00	0.00
3,700.00	14.59	342.122	3,557.61	758.87	-244.78	-239.48	1.00	-1.00	0.00
3,800.00	13.59	342.122	3,654.60	782.04	-252.26	-246.79	1.00	-1.00	0.00
3,900.00	12.59	342.122	3,752.00	803.60	-259.21	-253.59	1.00	-1.00	0.00
4,000.00	11.59	342.122	3,849.78	823.54	-265.64	-259.88	1.00	-1.00	0.00
4,100.00	10.59	342.122	3,947.91	841.84	-271.55	-265.66	1.00	-1.00	0.00
4,200.00	9.59	342.122	4,046.36	858.52	-276.92	-270.92	1.00	-1.00	0.00
4,300.00	8.59	342.122	4,145.11	873.56	-281.77	-275.67	1.00	-1.00	0.00
4,400.00	7.59	342.122	4,244.11	886.95	-286.10	-279.90	1.00	-1.00	0.00
4,500.00	6.59	342.122	4,343.34	898.70	-289.88	-283.60	1.00	-1.00	0.00
4,600.00	5.59	342.122	4,442.78	908.80	-293.14	-286.79	1.00	-1.00	0.00
4,700.00	4.59	342.122	4,542.38	917.24	-295.87	-289.46	1.00	-1.00	0.00

Database:	Casper District	Local Co-ordinate Reference:	Well Will Trust 6-62-3-3225B
Company:	Bill Barrett Corp.	TVD Reference:	GL 4820' & KB 20' @ 4840.00ft
Project:	Weld County, CO NAD 83	MD Reference:	GL 4820' & KB 20' @ 4840.00ft
Site:	Will Trust 6-62-3_2 NWSW Pad	North Reference:	True
Well:	Will Trust 6-62-3-3225B	Survey Calculation Method:	Minimum Curvature
Wellbore:	OH		
Design:	Plan 2		

Planned Survey									
Measured Depth (ft)	Inclination (°)	Azimuth (°)	Vertical Depth (ft)	+N/-S (ft)	+E/-W (ft)	Vertical Section (ft)	Dogleg Rate (°/100ft)	Build Rate (°/100ft)	Turn Rate (°/100ft)
4,800.00	3.59	342.122	4,642.13	924.03	-298.06	-291.60	1.00	-1.00	0.00
4,900.00	2.59	342.122	4,741.98	929.17	-299.71	-293.22	1.00	-1.00	0.00
5,000.00	1.59	342.122	4,841.91	932.64	-300.83	-294.31	1.00	-1.00	0.00
5,100.00	0.59	342.122	4,941.89	934.45	-301.42	-294.89	1.00	-1.00	0.00
5,159.11	0.00	0.000	5,001.00	934.74	-301.51	-294.98	1.00	-1.00	0.00
Start 1064.55 hold at 5159.11 MD									
5,200.00	0.00	0.000	5,041.89	934.74	-301.51	-294.98	0.00	0.00	0.00
5,300.00	0.00	0.000	5,141.89	934.74	-301.51	-294.98	0.00	0.00	0.00
5,400.00	0.00	0.000	5,241.89	934.74	-301.51	-294.98	0.00	0.00	0.00
5,500.00	0.00	0.000	5,341.89	934.74	-301.51	-294.98	0.00	0.00	0.00
5,600.00	0.00	0.000	5,441.89	934.74	-301.51	-294.98	0.00	0.00	0.00
5,700.00	0.00	0.000	5,541.89	934.74	-301.51	-294.98	0.00	0.00	0.00
5,800.00	0.00	0.000	5,641.89	934.74	-301.51	-294.98	0.00	0.00	0.00
5,900.00	0.00	0.000	5,741.89	934.74	-301.51	-294.98	0.00	0.00	0.00
6,000.00	0.00	0.000	5,841.89	934.74	-301.51	-294.98	0.00	0.00	0.00
6,100.00	0.00	0.000	5,941.89	934.74	-301.51	-294.98	0.00	0.00	0.00
6,200.00	0.00	0.000	6,041.89	934.74	-301.51	-294.98	0.00	0.00	0.00
6,223.66	0.00	0.000	6,065.55	934.74	-301.51	-294.98	0.00	0.00	0.00
Start DLS 12.00 TFO 89.60									
6,300.00	9.16	89.600	6,141.57	934.78	-295.42	-288.89	12.00	12.00	0.00
6,400.00	21.16	89.600	6,237.91	934.96	-269.32	-262.78	12.00	12.00	0.00
6,500.00	33.16	89.600	6,326.72	935.28	-223.75	-217.22	12.00	12.00	0.00
6,600.00	45.16	89.600	6,404.12	935.72	-160.72	-154.18	12.00	12.00	0.00
6,700.00	57.16	89.600	6,466.71	936.26	-82.97	-76.43	12.00	12.00	0.00
6,800.00	69.16	89.600	6,511.78	936.88	6.09	12.63	12.00	12.00	0.00
6,900.00	81.16	89.600	6,537.34	937.56	102.58	109.12	12.00	12.00	0.00
6,977.87	90.51	89.600	6,543.00	938.10	180.16	186.70	12.00	12.00	0.00
Start 9744.68 hold at 6977.87 MD									
7,000.00	90.51	89.600	6,542.80	938.25	202.28	208.83	0.00	0.00	0.00
7,100.00	90.51	89.600	6,541.92	938.95	302.28	308.82	0.00	0.00	0.00
7,200.00	90.51	89.600	6,541.04	939.65	402.27	408.82	0.00	0.00	0.00
7,300.00	90.51	89.600	6,540.15	940.34	502.26	508.82	0.00	0.00	0.00
7,400.00	90.51	89.600	6,539.27	941.04	602.26	608.81	0.00	0.00	0.00
7,500.00	90.51	89.600	6,538.39	941.74	702.25	708.81	0.00	0.00	0.00
7,600.00	90.51	89.600	6,537.51	942.44	802.25	808.81	0.00	0.00	0.00
7,700.00	90.51	89.600	6,536.62	943.13	902.24	908.80	0.00	0.00	0.00
7,800.00	90.51	89.600	6,535.74	943.83	1,002.23	1,008.80	0.00	0.00	0.00
7,900.00	90.51	89.600	6,534.86	944.53	1,102.23	1,108.79	0.00	0.00	0.00
8,000.00	90.51	89.600	6,533.98	945.23	1,202.22	1,208.79	0.00	0.00	0.00
8,100.00	90.51	89.600	6,533.09	945.92	1,302.21	1,308.79	0.00	0.00	0.00
8,200.00	90.51	89.600	6,532.21	946.62	1,402.21	1,408.78	0.00	0.00	0.00
8,300.00	90.51	89.600	6,531.33	947.32	1,502.20	1,508.78	0.00	0.00	0.00
8,400.00	90.51	89.600	6,530.45	948.01	1,602.19	1,608.77	0.00	0.00	0.00
8,500.00	90.51	89.600	6,529.56	948.71	1,702.19	1,708.77	0.00	0.00	0.00
8,600.00	90.51	89.600	6,528.68	949.41	1,802.18	1,808.77	0.00	0.00	0.00
8,700.00	90.51	89.600	6,527.80	950.11	1,902.18	1,908.76	0.00	0.00	0.00
8,800.00	90.51	89.600	6,526.92	950.80	2,002.17	2,008.76	0.00	0.00	0.00
8,900.00	90.51	89.600	6,526.03	951.50	2,102.16	2,108.75	0.00	0.00	0.00
9,000.00	90.51	89.600	6,525.15	952.20	2,202.16	2,208.75	0.00	0.00	0.00
9,100.00	90.51	89.600	6,524.27	952.90	2,302.15	2,308.75	0.00	0.00	0.00
9,200.00	90.51	89.600	6,523.39	953.59	2,402.14	2,408.74	0.00	0.00	0.00
9,300.00	90.51	89.600	6,522.50	954.29	2,502.14	2,508.74	0.00	0.00	0.00
9,400.00	90.51	89.600	6,521.62	954.99	2,602.13	2,608.73	0.00	0.00	0.00

Database:	Casper District	Local Co-ordinate Reference:	Well Will Trust 6-62-3-3225B
Company:	Bill Barrett Corp.	TVD Reference:	GL 4820' & KB 20' @ 4840.00ft
Project:	Weld County, CO NAD 83	MD Reference:	GL 4820' & KB 20' @ 4840.00ft
Site:	Will Trust 6-62-3_2 NWSW Pad	North Reference:	True
Well:	Will Trust 6-62-3-3225B	Survey Calculation Method:	Minimum Curvature
Wellbore:	OH		
Design:	Plan 2		

Planned Survey									
Measured Depth (ft)	Inclination (°)	Azimuth (°)	Vertical Depth (ft)	+N/-S (ft)	+E/-W (ft)	Vertical Section (ft)	Dogleg Rate (°/100ft)	Build Rate (°/100ft)	Turn Rate (°/100ft)
9,500.00	90.51	89.600	6,520.74	955.68	2,702.13	2,708.73	0.00	0.00	0.00
9,600.00	90.51	89.600	6,519.86	956.38	2,802.12	2,808.73	0.00	0.00	0.00
9,700.00	90.51	89.600	6,518.97	957.08	2,902.11	2,908.72	0.00	0.00	0.00
9,800.00	90.51	89.600	6,518.09	957.78	3,002.11	3,008.72	0.00	0.00	0.00
9,900.00	90.51	89.600	6,517.21	958.47	3,102.10	3,108.72	0.00	0.00	0.00
10,000.00	90.51	89.600	6,516.33	959.17	3,202.09	3,208.71	0.00	0.00	0.00
10,100.00	90.51	89.600	6,515.44	959.87	3,302.09	3,308.71	0.00	0.00	0.00
10,200.00	90.51	89.600	6,514.56	960.57	3,402.08	3,408.70	0.00	0.00	0.00
10,300.00	90.51	89.600	6,513.68	961.26	3,502.07	3,508.70	0.00	0.00	0.00
10,400.00	90.51	89.600	6,512.80	961.96	3,602.07	3,608.70	0.00	0.00	0.00
10,500.00	90.51	89.600	6,511.91	962.66	3,702.06	3,708.69	0.00	0.00	0.00
10,600.00	90.51	89.600	6,511.03	963.35	3,802.06	3,808.69	0.00	0.00	0.00
10,700.00	90.51	89.600	6,510.15	964.05	3,902.05	3,908.68	0.00	0.00	0.00
10,800.00	90.51	89.600	6,509.27	964.75	4,002.04	4,008.68	0.00	0.00	0.00
10,900.00	90.51	89.600	6,508.38	965.45	4,102.04	4,108.68	0.00	0.00	0.00
11,000.00	90.51	89.600	6,507.50	966.14	4,202.03	4,208.67	0.00	0.00	0.00
11,100.00	90.51	89.600	6,506.62	966.84	4,302.02	4,308.67	0.00	0.00	0.00
11,200.00	90.51	89.600	6,505.74	967.54	4,402.02	4,408.66	0.00	0.00	0.00
11,300.00	90.51	89.600	6,504.85	968.24	4,502.01	4,508.66	0.00	0.00	0.00
11,400.00	90.51	89.600	6,503.97	968.93	4,602.00	4,608.66	0.00	0.00	0.00
11,500.00	90.51	89.600	6,503.09	969.63	4,702.00	4,708.65	0.00	0.00	0.00
11,600.00	90.51	89.600	6,502.21	970.33	4,801.99	4,808.65	0.00	0.00	0.00
11,700.00	90.51	89.600	6,501.32	971.02	4,901.99	4,908.65	0.00	0.00	0.00
11,800.00	90.51	89.600	6,500.44	971.72	5,001.98	5,008.64	0.00	0.00	0.00
11,900.00	90.51	89.600	6,499.56	972.42	5,101.97	5,108.64	0.00	0.00	0.00
12,000.00	90.51	89.600	6,498.68	973.12	5,201.97	5,208.63	0.00	0.00	0.00
12,100.00	90.51	89.600	6,497.79	973.81	5,301.96	5,308.63	0.00	0.00	0.00
12,200.00	90.51	89.600	6,496.91	974.51	5,401.95	5,408.63	0.00	0.00	0.00
12,300.00	90.51	89.600	6,496.03	975.21	5,501.95	5,508.62	0.00	0.00	0.00
12,400.00	90.51	89.600	6,495.15	975.91	5,601.94	5,608.62	0.00	0.00	0.00
12,500.00	90.51	89.600	6,494.26	976.60	5,701.94	5,708.61	0.00	0.00	0.00
12,600.00	90.51	89.600	6,493.38	977.30	5,801.93	5,808.61	0.00	0.00	0.00
12,700.00	90.51	89.600	6,492.50	978.00	5,901.92	5,908.61	0.00	0.00	0.00
12,800.00	90.51	89.600	6,491.62	978.69	6,001.92	6,008.60	0.00	0.00	0.00
12,900.00	90.51	89.600	6,490.73	979.39	6,101.91	6,108.60	0.00	0.00	0.00
13,000.00	90.51	89.600	6,489.85	980.09	6,201.90	6,208.59	0.00	0.00	0.00
13,100.00	90.51	89.600	6,488.97	980.79	6,301.90	6,308.59	0.00	0.00	0.00
13,200.00	90.51	89.600	6,488.09	981.48	6,401.89	6,408.59	0.00	0.00	0.00
13,300.00	90.51	89.600	6,487.20	982.18	6,501.88	6,508.58	0.00	0.00	0.00
13,400.00	90.51	89.600	6,486.32	982.88	6,601.88	6,608.58	0.00	0.00	0.00
13,500.00	90.51	89.600	6,485.44	983.58	6,701.87	6,708.58	0.00	0.00	0.00
13,600.00	90.51	89.600	6,484.56	984.27	6,801.87	6,808.57	0.00	0.00	0.00
13,700.00	90.51	89.600	6,483.67	984.97	6,901.86	6,908.57	0.00	0.00	0.00
13,800.00	90.51	89.600	6,482.79	985.67	7,001.85	7,008.56	0.00	0.00	0.00
13,900.00	90.51	89.600	6,481.91	986.36	7,101.85	7,108.56	0.00	0.00	0.00
14,000.00	90.51	89.600	6,481.03	987.06	7,201.84	7,208.56	0.00	0.00	0.00
14,100.00	90.51	89.600	6,480.14	987.76	7,301.83	7,308.55	0.00	0.00	0.00
14,200.00	90.51	89.600	6,479.26	988.46	7,401.83	7,408.55	0.00	0.00	0.00
14,300.00	90.51	89.600	6,478.38	989.15	7,501.82	7,508.54	0.00	0.00	0.00
14,400.00	90.51	89.600	6,477.50	989.85	7,601.82	7,608.54	0.00	0.00	0.00
14,500.00	90.51	89.600	6,476.61	990.55	7,701.81	7,708.54	0.00	0.00	0.00
14,600.00	90.51	89.600	6,475.73	991.25	7,801.80	7,808.53	0.00	0.00	0.00
14,700.00	90.51	89.600	6,474.85	991.94	7,901.80	7,908.53	0.00	0.00	0.00
14,800.00	90.51	89.600	6,473.97	992.64	8,001.79	8,008.52	0.00	0.00	0.00

Database:	Casper District	Local Co-ordinate Reference:	Well Will Trust 6-62-3-3225B
Company:	Bill Barrett Corp.	TVD Reference:	GL 4820' & KB 20' @ 4840.00ft
Project:	Weld County, CO NAD 83	MD Reference:	GL 4820' & KB 20' @ 4840.00ft
Site:	Will Trust 6-62-3_2 NWSW Pad	North Reference:	True
Well:	Will Trust 6-62-3-3225B	Survey Calculation Method:	Minimum Curvature
Wellbore:	OH		
Design:	Plan 2		

Planned Survey									
Measured Depth (ft)	Inclination (°)	Azimuth (°)	Vertical Depth (ft)	+N/-S (ft)	+E/-W (ft)	Vertical Section (ft)	Dogleg Rate (°/100ft)	Build Rate (°/100ft)	Turn Rate (°/100ft)
14,900.00	90.51	89.600	6,473.08	993.34	8,101.78	8,108.52	0.00	0.00	0.00
15,000.00	90.51	89.600	6,472.20	994.03	8,201.78	8,208.52	0.00	0.00	0.00
15,100.00	90.51	89.600	6,471.32	994.73	8,301.77	8,308.51	0.00	0.00	0.00
15,200.00	90.51	89.600	6,470.44	995.43	8,401.76	8,408.51	0.00	0.00	0.00
15,300.00	90.51	89.600	6,469.55	996.13	8,501.76	8,508.51	0.00	0.00	0.00
15,400.00	90.51	89.600	6,468.67	996.82	8,601.75	8,608.50	0.00	0.00	0.00
15,500.00	90.51	89.600	6,467.79	997.52	8,701.75	8,708.50	0.00	0.00	0.00
15,600.00	90.51	89.600	6,466.91	998.22	8,801.74	8,808.49	0.00	0.00	0.00
15,700.00	90.51	89.600	6,466.02	998.92	8,901.73	8,908.49	0.00	0.00	0.00
15,800.00	90.51	89.600	6,465.14	999.61	9,001.73	9,008.49	0.00	0.00	0.00
15,900.00	90.51	89.600	6,464.26	1,000.31	9,101.72	9,108.48	0.00	0.00	0.00
16,000.00	90.51	89.600	6,463.38	1,001.01	9,201.71	9,208.48	0.00	0.00	0.00
16,100.00	90.51	89.600	6,462.49	1,001.70	9,301.71	9,308.47	0.00	0.00	0.00
16,200.00	90.51	89.600	6,461.61	1,002.40	9,401.70	9,408.47	0.00	0.00	0.00
16,300.00	90.51	89.600	6,460.73	1,003.10	9,501.70	9,508.47	0.00	0.00	0.00
16,400.00	90.51	89.600	6,459.85	1,003.80	9,601.69	9,608.46	0.00	0.00	0.00
16,500.00	90.51	89.600	6,458.96	1,004.49	9,701.68	9,708.46	0.00	0.00	0.00
16,600.00	90.51	89.600	6,458.08	1,005.19	9,801.68	9,808.45	0.00	0.00	0.00
16,700.00	90.51	89.600	6,457.20	1,005.89	9,901.67	9,908.45	0.00	0.00	0.00
16,722.56	90.51	89.600	6,457.00	1,006.05	9,924.22	9,931.01	0.00	0.00	0.00
TD at 16722.56									

Design Targets									
Target Name	Dip Angle (°)	Dip Dir. (°)	TVD (ft)	+N/-S (ft)	+E/-W (ft)	Northing (usft)	Easting (usft)	Latitude	Longitude
6-62-3-3225B PBHL - hit/miss target - Shape - Point	0.00	0.000	6,457.00	1,006.05	9,924.22	1,433,673.02	3,338,818.85	40° 31' 2.791 N	104° 16' 52.720 W
6-62-3-3225B LP - plan misses target center by 0.01ft at 6977.88ft MD (6543.00 TVD, 938.10 N, 180.16 E) - Point	0.00	0.000	6,543.00	938.11	180.16	1,433,475.10	3,329,076.58	40° 31' 2.140 N	104° 18' 58.889 W

Plan Annotations				
Measured Depth (ft)	Vertical Depth (ft)	Local Coordinates		Comment
		+N/-S (ft)	+E/-W (ft)	
1,000.00	1,000.00	0.00	0.00	Start Build 2.00
2,286.10	2,243.33	270.16	-87.14	Start 300.81 hold at 2286.10 MD
2,586.91	2,514.33	394.41	-127.22	Start Drop -1.00
5,159.11	5,001.00	934.74	-301.51	Start 1064.55 hold at 5159.11 MD
6,223.66	6,065.55	934.74	-301.51	Start DLS 12.00 TFO 89.60
6,977.87	6,543.00	938.10	180.16	Start 9744.68 hold at 6977.87 MD
16,722.56	6,457.00	1,006.05	9,924.22	TD at 16722.56