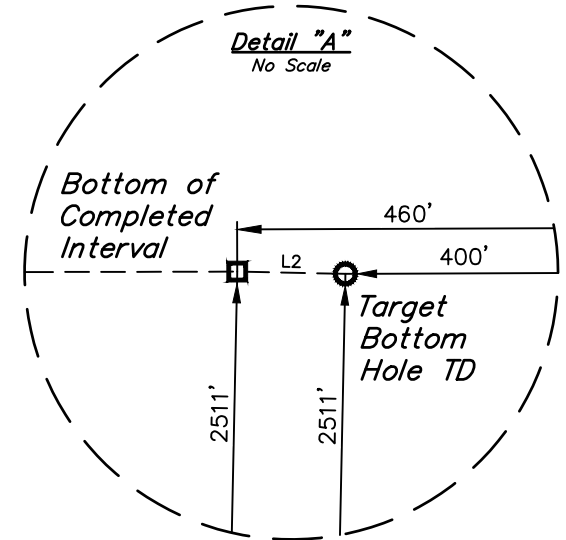


BILL BARRETT CORPORATION

BASIS OF BEARINGS
BASIS OF BEARINGS IS A G.P.S. OBSERVATION
BASIS OF ELEVATION



THIS IS TO CERTIFY THAT THE ABOVE EXAMINATION WAS PREPARED FROM THE
NOTES OF ACTUAL SURVEYS MADE BY ME OR UNDER MY SUPERVISION
AND THAT THE SAME ARE TRUE AND ACCURATE TO THE BEST OF MY
KNOWLEDGE AND BELIEF.

REGISTERED LAND SURVEYOR
REGISTRATION NO. 28285
STATE OF COLORADO 06-20-17

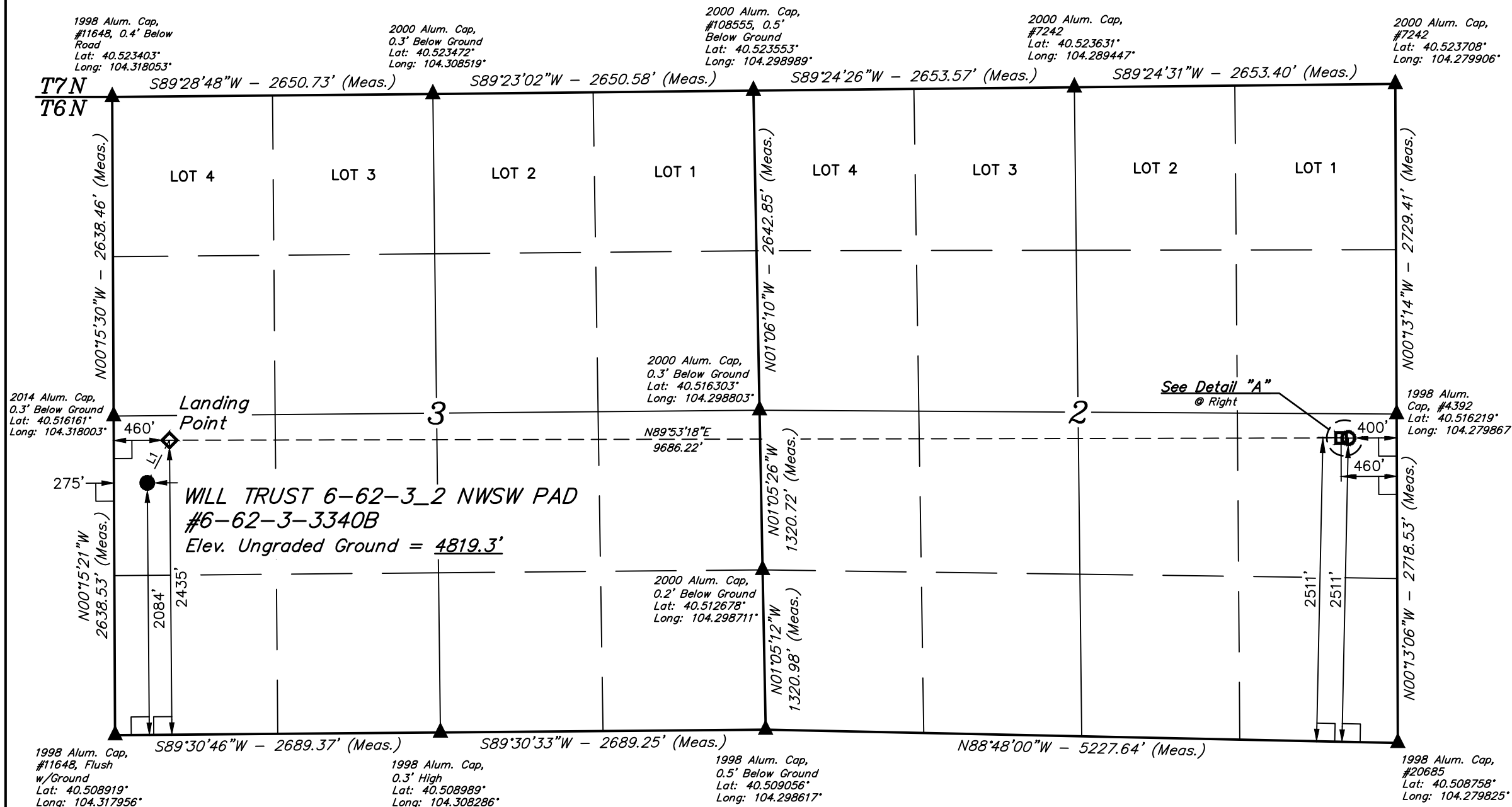
REV: 3 06-16-17 C.C. (LP & BHL CHANGE)

UINTAH
ENGINEERING & LAND SURVEYING

UELS, LLC
Corporate Office * 85 South 200 East
Vernal, UT 84078 * (435) 789-1017

SURVEYED BY	DARREN SHANKS, C.M.	12-14-15	SCALE
DRAWN BY	C.C.	12-28-15	1" = 1000'

WELL LOCATION PLAT



LINE TABLE		
LINE	DIRECTION	LENGTH
L1	N27°28'34"E	397.59'
L2	S88°48'00"E	60.02'

LEGEND:

L = 90° SYMBOL
 ● = PROPOSED WELLHEAD.
 ◆ = LANDING POINT.
 □ = BOTTOM OF COMPLETED INTERVAL.
 ○ = TARGET BOTTOM HOLE TD.
 ▲ = SECTION CORNERS LOCATED. (NAD 83)

NAD 83 (SURFACE LOCATION)	NAD 83 (LANDING POINT)	NAD 83 (BTM. OF COMPLETED INT.)	NAD 83 (TARGET BOTTOM HOLE TD)
LATITUDE = 40°30'52.73" (40.514647)	LATITUDE = 40°30'56.21" (40.515614)	LATITUDE = 40°30'56.44" (40.515678)	LATITUDE = 40°30'56.43" (40.515675)
LONGITUDE = 104°19'01.22" (104.317006)	LONGITUDE = 104°18'58.85" (104.316347)	LONGITUDE = 104°16'53.46" (104.281517)	LONGITUDE = 104°16'52.68" (104.281300)
NAD 27 (SURFACE LOCATION)	NAD 27 (LANDING POINT)	NAD 27 (BTM. OF COMPLETED INT.)	NAD 27 (TARGET BOTTOM HOLE TD)
LATITUDE = 40°30'52.79" (40.514664)	LATITUDE = 40°30'56.27" (40.515631)	LATITUDE = 40°30'56.50" (40.515694)	LATITUDE = 40°30'56.49" (40.515692)
LONGITUDE = 104°18'59.39" (104.316497)	LONGITUDE = 104°18'57.02" (104.315839)	LONGITUDE = 104°16'51.64" (104.281011)	LONGITUDE = 104°16'50.86" (104.280794)
STATE PLANE NAD 83 (CO. NORTH)	STATE PLANE NAD 83 (CO. NORTH)	STATE PLANE NAD 83 (CO. NORTH)	STATE PLANE NAD 83 (CO. NORTH)
N: 1432520.20 E: 3328909.48	N: 1432875.38 E: 3329087.93	N: 1433029.51 E: 3338770.48	N: 1433029.09 E: 3338830.48
STATE PLANE NAD 27 (CO. NORTH)	STATE PLANE NAD 27 (CO. NORTH)	STATE PLANE NAD 27 (CO. NORTH)	STATE PLANE NAD 27 (CO. NORTH)
N: 432520.76 E: 2329059.01	N: 432875.94 E: 2329237.46	N: 433030.00 E: 2338920.05	N: 433029.58 E: 2338980.05

PDOP = 1.5