

Inspection Photos
Location Name: Wickstrom #6-5
API: 05-123-21315
Inspection Date: October 17, 2017



Photo #1 – View of wellhead and pump jack from south.



Photo #2 – Historical accumulations of oil-stained soil beneath wellhead, day tank, and flowline riser at SE corner of pump jack. Note: day tank lacking secondary containment device.

Inspection Photos

Location Name: Wickstrom #6-5

API: 05-123-21315

Inspection Date: October 17, 2017



Photo #3 – Disassembled pump jack suggests that well may be incapable of production, although well is equipped with a plunger lift.



Photo #4 – Accumulation of debris and wind-blown weeds beneath pump jack.

Inspection Photos

Location Name: Wickstrom #6-5

API: 05-123-21315

Inspection Date: October 17, 2017



Photo #5 – View of unused horizontal treater and treater/separator sheds from SW corner.



Photo #6 – Junk/debris at former treater shed.

Inspection Photos
Location Name: Wickstrom #6-5
API: 05-123-21315
Inspection Date: October 17, 2017

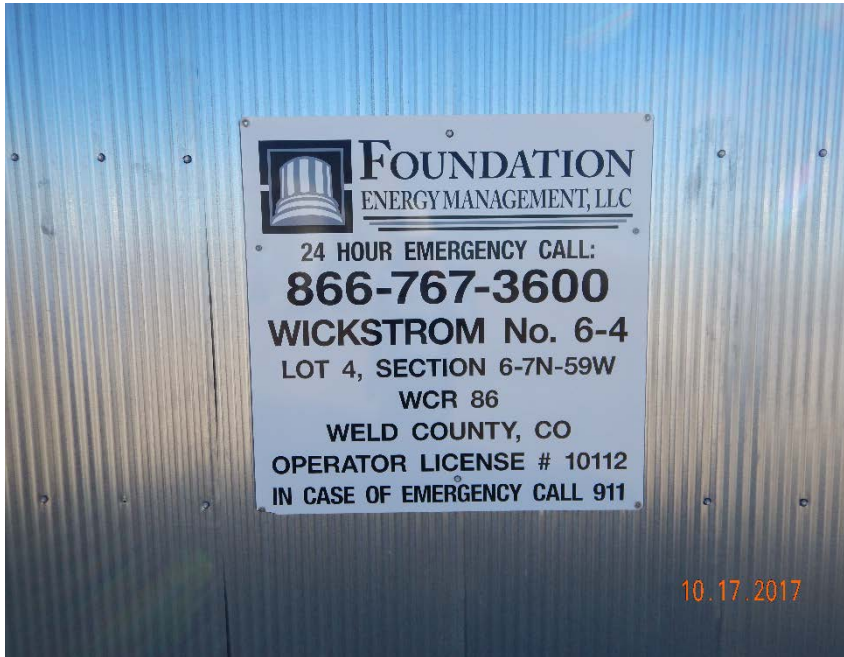


Photo #7 – Sign for Wickstrom #6-4 attached to corresponding treater/separator shed.



Photo #8 – Satisfactory conditions at Wickstrom #6-4 vertical separator.

Inspection Photos

Location Name: Wickstrom #6-5

API: 05-123-21315

Inspection Date: October 17, 2017



Photo #9 - Satisfactory conditions at Wickstrom #6-4 vertical treater.

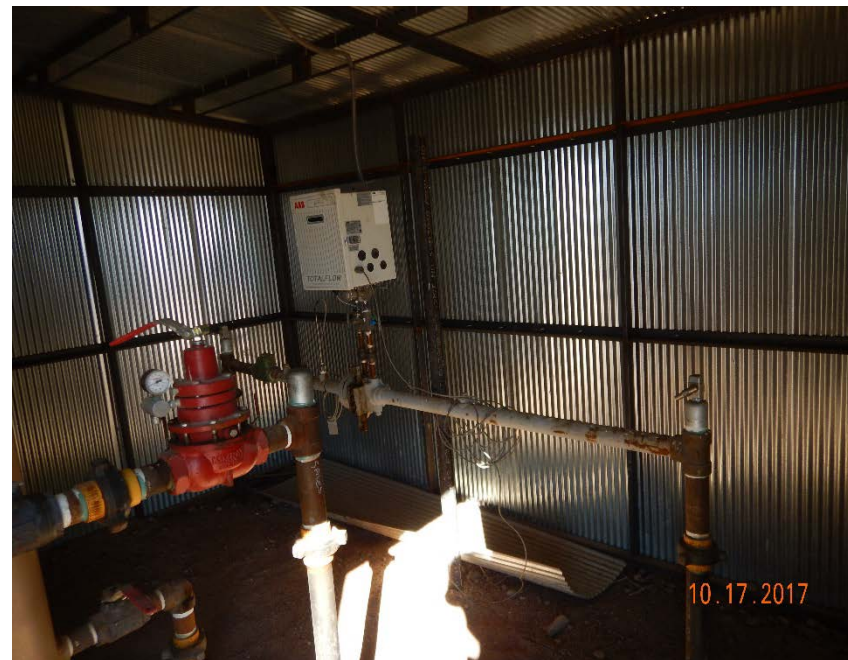


Photo #10 - Satisfactory conditions at Wickstrom #6-4 gas meter.

Inspection Photos

Location Name: Wickstrom #6-5

API: 05-123-21315

Inspection Date: October 17, 2017



Photo #11 – View of Wickstrom #6-5 treater/separator shed with gas meter to west and ECD to south.



Photo #12 – Drag sleds stored NE of Wickstrom #6-5 treater/separator shed.

Inspection Photos
Location Name: Wickstrom #6-5
API: 05-123-21315
Inspection Date: October 17, 2017



Photo #13 – Sign attached to Wickstrom #6-5 treater/separator shed.



Photo #14 – Localized, historical accumulations of oily waste inside of Wickstrom #6-5 treater/separator shed (1).

Inspection Photos
Location Name: Wickstrom #6-5
API: 05-123-21315
Inspection Date: October 17, 2017



Photo #15 - Localized, historical accumulations of oily waste inside of Wickstrom #6-5 treater/separator shed (2).



Photo #16 – View of crude oil tank battery west of treater/separator sheds.

Inspection Photos

Location Name: Wickstrom #6-5

API: 05-123-21315

Inspection Date: October 17, 2017



Photo #17 – View of 300 bbl crude oil ASTs from NW. Note: well sign for Wickstrom #6-12 is visible north of tanks.



Photo #18 – Unused flowline riser with localized, oil-stained soil on south side of western 300 bbl crude oil AST.

Inspection Photos

Location Name: Wickstrom #6-5

API: 05-123-21315

Inspection Date: October 17, 2017



Photo #19 – Localized historical accumulation of oily waste and oil-stained soil beneath 300 bbl crude oil AST loadout valves (1).



Photo #20 - Localized historical accumulation of oily waste and oil-stained soil beneath 300 bbl crude oil AST loadout valves (2).



Inspection Photos
Location Name: Wickstrom #6-5
API: 05-123-21315
Inspection Date: October 17, 2017



Photo #21 – Localized, oil-stained soil beneath valve on south side of 300 bbl crude oil AST.



Photo #22 – Rusty 55-gallon drum and unused 2" flowline risers east of 300 bbl crude oil ASTs.

Inspection Photos

Location Name: Wickstrom #6-5

API: 05-123-21315

Inspection Date: October 17, 2017



Photo #23 – 400 bbl crude oil ASTs south of 300 bbl crude oil ASTs.



Photo #24 – Localized, oil-stained soil beneath valve on south side of 400 bbl crude oil AST.

Inspection Photos
Location Name: Wickstrom #6-5
API: 05-123-21315
Inspection Date: October 17, 2017



Photo #25 – Localized, oil-stained soil beneath valve on north side of 400 bbl crude oil ASTs.



Photo #26 – Active 2" flowline risers with localized, oil-stained soil located east of 400 bbl crude oil ASTs.

Inspection Photos
Location Name: Wickstrom #6-5
API: 05-123-21315
Inspection Date: October 17, 2017



Photo #27 – Gas-powered pump plumbed to active flowline risers at SE corner of crude oil tank battery.



Photo #28 – Shallow/damaged earthen berms at SE corner of crude oil tank battery.

Inspection Photos
Location Name: Wickstrom #6-5
API: 05-123-21315
Inspection Date: October 17, 2017



Photo #29 – Skim tank inside of pit berm at NE corner of production facility lacks berms of its own.



Photo #30 – Skim tank outlet to pit is disassembled. Note: oil-stained soil and weeds at skim tank outlet.

Inspection Photos

Location Name: Wickstrom #6-5

API: 05-123-21315

Inspection Date: October 17, 2017



Photo #31 – Historical photo of produced water pit (Facility ID #273445) taken from document #1490137, dated 4/6/2004, predates Remediation Project #1834 and indicates that pit has been partially backfilled since photo was taken.



Photo #32 – View from SE corner of produced water pit on date of inspection.



COLORADO
Oil & Gas Conservation
Commission
Department of Natural Resources

Inspection Photos
Location Name: Wickstrom #6-5
API: 05-123-21315
Inspection Date: October 17, 2017



Photo #33 – Gaps in mesh cover for produced water pit (1).



Photo #34 - Gaps in mesh cover for produced water pit (2).

Inspection Photos

Location Name: Wickstrom #6-5

API: 05-123-21315

Inspection Date: October 17, 2017



Photo #35 – View of gas flare, separator sheds, and tank battery from SE corner of pit.



Photo #36 – Close-up view of flare control box and associated flowlines.