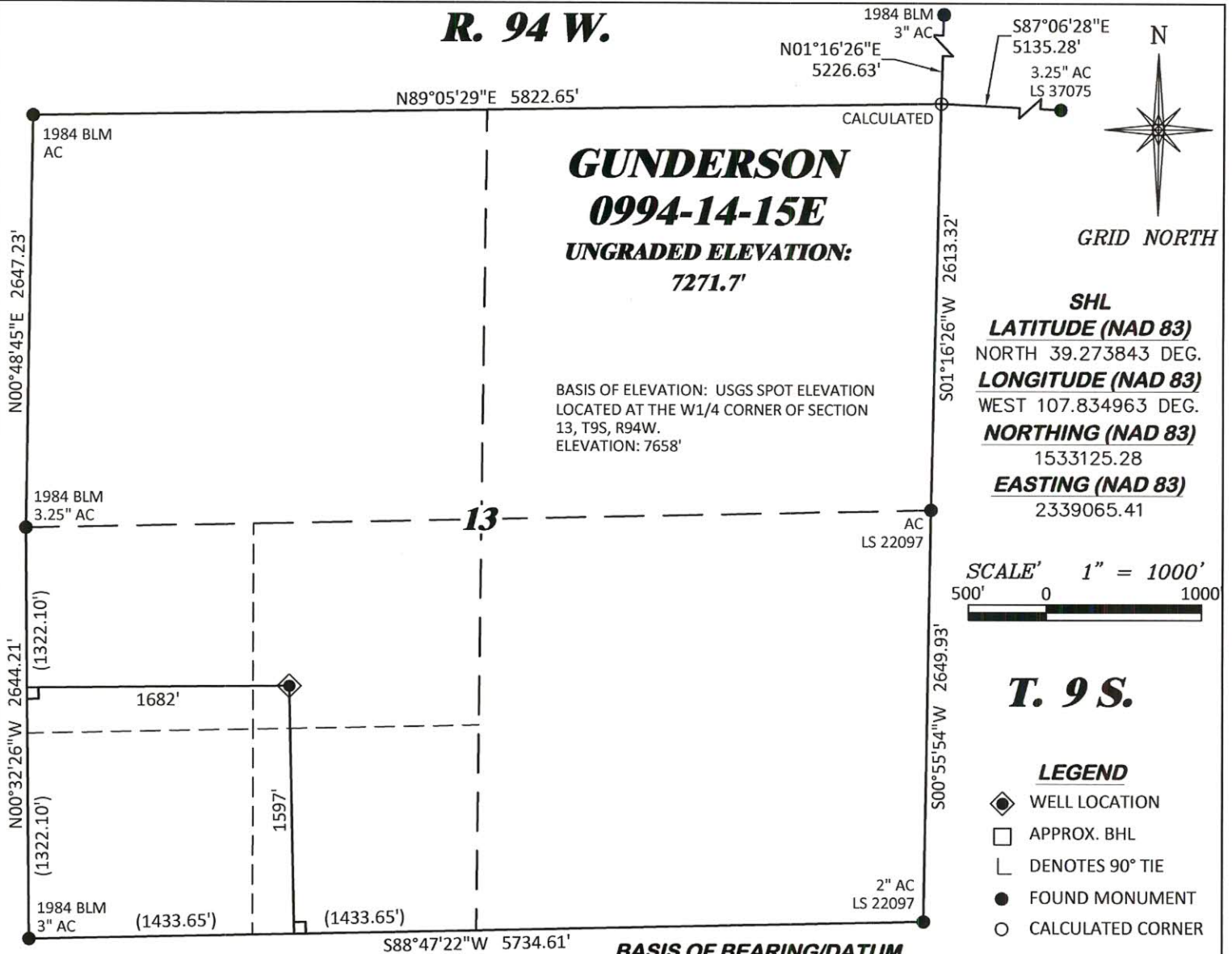


R. 94 W.



GUNDERSON
0994-14-15E
UNGRADED ELEVATION:
7271.7'

BASIS OF ELEVATION: USGS SPOT ELEVATION
LOCATED AT THE W1/4 CORNER OF SECTION
13, T9S, R94W.
ELEVATION: 7658'

SHL
LATITUDE (NAD 83)
NORTH 39.273843 DEG.
LONGITUDE (NAD 83)
WEST 107.834963 DEG.
NORTHING (NAD 83)
1533125.28
EASTING (NAD 83)
2339065.41

SCALE' 1" = 1000'
500' 0 1000'

T. 9 S.

LEGEND

- ◆ WELL LOCATION
- APPROX. BHL
- └ DENOTES 90° TIE
- FOUND MONUMENT
- CALCULATED CORNER

NOTES

1. GPS OPERATOR T. SHERRILL OBSERVED A PDOP OF 1.2.
2. ALL GPS OBSERVATIONS ARE IN COMPLIANCE WITH COGCC RULE No.215.
3. EXISTING IMPROVEMENTS WITHIN 500' OF LOCATION. SEE LOC. DRAWING.
4. SURROUNDING SURFACE USE IS NATIVE BRUSH, NON CROP RANGELAND.

SURVEYOR'S STATEMENT

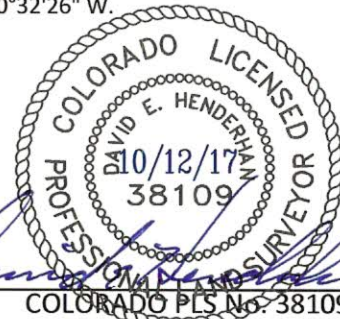
I, DAVID E. HENDERHAN, AN EMPLOYEE AND AGENT ON BEHALF OF D.R. GRIFFIN & ASSOCIATES, INC. STATE THE PLAT HEREON IS A CORRECT REPRESENTATION OF A SURVEY MADE UNDER MY SUPERVISION ON THE 29th DAY OF SEPTEMBER, 2017 OF THE SHOWN GUNDERSON 0994-14-15E AND THAT THE LOCATION HAS BEEN STAKED ON THE GROUND AS SHOWN ON THIS PLAT.

Notice: In accordance with Colorado State Law, any legal action based upon any defect in this survey plat must commence within three (3) years after first discovery of such defect. In no event, may any action based upon any defect in this survey plat be commenced more than ten (10) years from the date of certification shown hereon.

BASIS OF BEARING/DATUM

SPCS COLORADO CENTRAL ZONE NAD 27 BASED ON GPS OBSERVATIONS AND OPUS SOLUTION ON DRG CONTROL POINT "23-9-94" HAVING A POSITION OF:
NAD83(2011)
LAT 39° 15' 45.58" NORTH
LONG 107° 51' 00.68" WEST
NAVD88 ELEVATION: 7182.10

THE WEST LINE OF THE SW¼ OF SECTION 13, MONUMENTED BY BLM AC'S AND BEARING N 00°32'26" W.



GUNDERSON 13-11 PAD

DRG RIFFIN & ASSOCIATES, INC.
(307) 362-5028 1414 ELK ST., ROCK SPRINGS, WY 82901

DRAWN: 10/11/2017 - TCM

SCALE: 1" = 1000'

REVISED: N/A - .

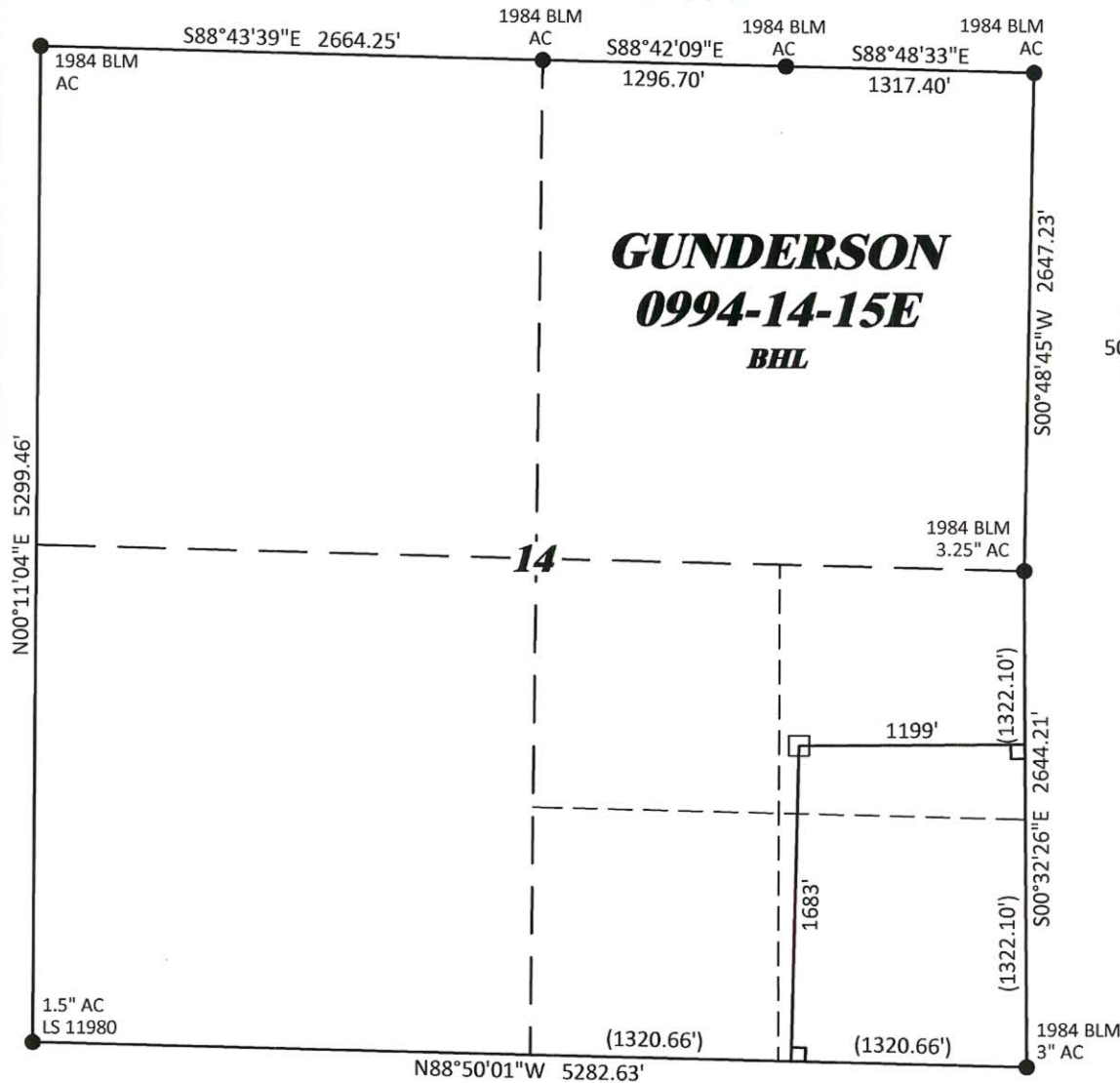
DRG JOB No. 21443

A4-14-15E

PLAT OF DRILLING LOCATION IN
NESW, SECTION 13, FOR
LARAMIE ENERGY, LLC.

1597' F/SL, & 1682' F/WL, SECTION 13,
T. 9 S., R. 94 W., 6TH P.M.,
MESA COUNTY, COLORADO

R. 94 W.



GRID NORTH

SCALE' 1" = 1000'
500' 0 1000'

T. 9 S.

BHL/TOG
LATITUDE (NAD 83)
NORTH 39.273848 DEG.
LONGITUDE (NAD 83)
WEST 107.845147 DEG.
NORTHING (NAD 83)
1533201
EASTING (NAD 83)
2336183

BASIS OF BEARING

THE WEST LINE OF THE SW¼ OF
SECTION 13, MONUMENTED BY BLM
AC'S AND BEARING N 00°32'26" W.

LEGEND

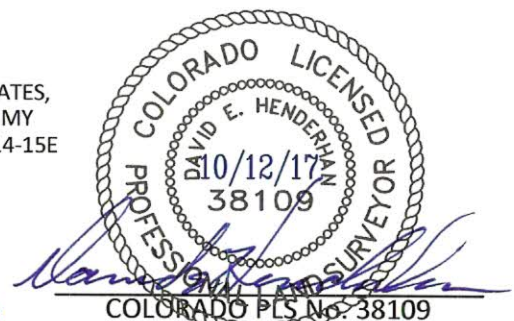
- ◆ WELL LOCATION
- APPROX. BHL
- └ DENOTES 90° TIE
- FOUND MONUMENT
- CALCULATED CORNER

SURVEYOR'S STATEMENT

I, DAVID E. HENDERHAN, AN EMPLOYEE AND AGENT ON BEHALF OF D.R. GRIFFIN & ASSOCIATES, INC. STATE THE PLAT HEREON IS A CORRECT REPRESENTATION OF A SURVEY MADE UNDER MY SUPERVISION ON THE 29th DAY OF SEPTEMBER, 2017 OF THE SHOWN GUNDERSON 0994-14-15E BOTTOM HOLE.

Notice: In accordance with Colorado State Law, any legal action based upon any defect in this survey plat must commence within three (3) years after first discovery of such defect. In no event, may any action based upon any defect in this survey plat be commenced more than ten (10) years from the date of certification shown hereon.

GUNDERSON 13-11 PAD



DR GRIFFIN & ASSOCIATES, INC.
1414 ELK ST., ROCK SPRINGS, WY 82901

(307) 362-5028

DRAWN: 10/11/2017 - TCM

SCALE: 1" = 1000'

REVISED: N/A - .

DRG JOB No. 21443

A4-14-15E BHL

**PLAT OF BOTTOM HOLE LOCATION IN
NESE, SECTION 14, FOR
LARAMIE ENERGY, LLC.**

**1683' F/SL, & 1199' F/EL, SECTION 14,
T. 9 S., R. 94 W., 6TH P.M.,
MESA COUNTY, COLORADO**