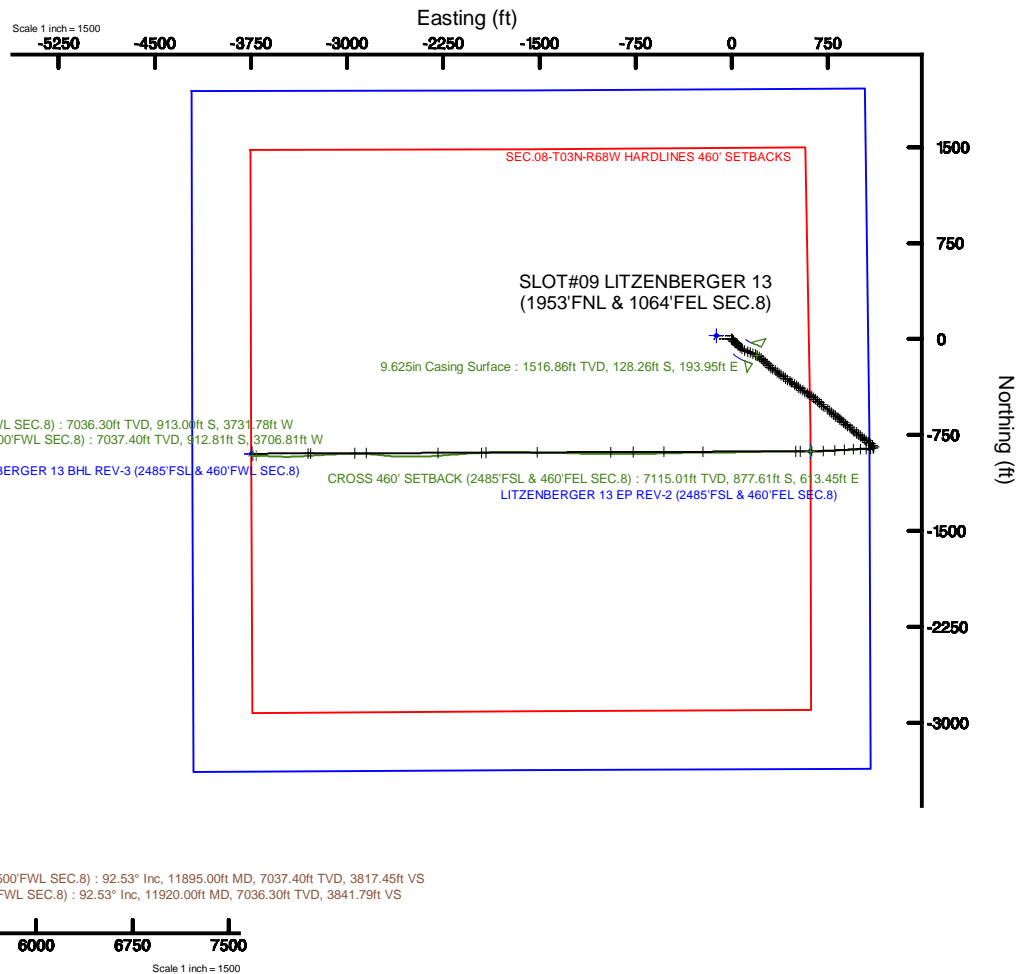


Location:	COLORADO	Slot:	SLOT#09 LITZENBERGER 13 (1953FNL & 1064FEL SEC.8)
Field:	WELD COUNTY (NAD83, TRUE NORTH)	Well:	LITZENBERGER 13
Facility:	SEC.08-T03N-R68W	Wellbore:	LITZENBERGER 13 PWB
Plot reference wellpath is LITZENBERGER 13 PWP REV-D-0		Grid System: NAD83 / Lambert Colorado SP, Northern Zone (501), US feet	
True vertical depths are referenced to XTREME 18 (17) (RKB)		North Reference: True north	
Measured depths are referenced to XTREME 18 (17) (RKB)		Scale: True distance	
XTREME 18 (17) (RKB) to Mean Sea Level: 5039 feet		Depths are in feet	
Mean Sea Level to Mud line (At Slot: SLOTH09 LITZENBERGER 13 (1953FNL & 1064FEL SEC.8): 0 feet		Created by: wagnam on 2017-10-25	
Coordinates are in feet referenced to Slot		Database: WA_DEN_Denver_Defn	



Facility Name			Grid East (US ft)	Grid North (US ft)	Latitude	Longitude
SEC.08-T03N-R6BW			3133484.377	1331482.520	40°14'32.388"N	105°01'18.588"W
Slot	Local N (ft)	Local E (ft)	Grid East (US ft)	Grid North (US ft)	Latitude	Longitude
SLOT#09 LITZENBERGER 13 (1953FNL & 1064FEL SEC.8)	-25.50	120.04	3133604.551	1331457.668	40°14'32.136"N	105°01'17.040"W
XTREME 18 (17) (RKB) to Mud line (At Slot: SLOT#09 LITZENBERGER 13 (1953FNL & 1064FEL SEC.8))					5097ft	
Mean Sea Level to Mud line (At Slot: SLOT#09 LITZENBERGER 13 (1953FNL & 1064FEL SEC.8))					0ft	
XTREME 18 (17) (RKB) to Mean Sea Level					5097ft	

Size (KB)	Size (KB)	Tool	Model	Log Interval/Content	Version
1730	1485.0	BH Nautilus	Custom BH Nautilus (Standard Hoisting) (Rockets: 0.020 model)	Custom BH Nautilus (Standard Hoisting-Aux Core) (Rockets: 0.020 model, 131 x 138 - 1465)	LTZINGER03 Q-1465
1465.0	7924.0	BH Nautilus Core	Custom BH Nautilus Core (Short) (Rockets: 0.020 model)	BH ATZ 8.0 (SHORT, ROCKETS: 0.020 - 1785)	LTZINGER03 Q-1465
7024.0	11020.0	BH Nautilus Core	Custom BH Nautilus Core (Short) (Rockets: 0.020 model)		LTZINGER03 Q-1465



Actual Wellpath Report

LITZENBERGER 13 AWP

Page 1 of 8

**BAKER
HUGHES**
a GE company



REFERENCE WELLPATH IDENTIFICATION

Operator	CUB CREEK ENERGY, LLC	Slot	SLOT#09 LITZENBERGER 13 (1953'FNL & 1064'FEL SEC.8)
Area	COLORADO	Well	LITZENBERGER 13
Field	WELD COUNTY (NAD83, TRUE NORTH)	Wellbore	LITZENBERGER 13 AWB
Facility	SEC.08-T03N-R68W		

REPORT SETUP INFORMATION

Projection System	NAD83 / Lambert Colorado SP, Northern Zone (501), US feet	Software System	WellArchitect® 5.1
North Reference	True	User	Wagnjam
Scale	0.999957	Report Generated	10/25/2017 at 5:02:25 PM
Convergence at slot	0.31° East	Database/Source file	WA_DEN_Denver_Defn/LITZENBERGER_13_AWP.xml

WELLPATH LOCATION

	Local coordinates		Grid coordinates		Geographic coordinates	
	North[ft]	East[ft]	Easting[US ft]	Northing[US ft]	Latitude	Longitude
Slot Location	-25.50	120.04	3133604.55	1331457.67	40°14'32.136"N	105°01'17.040"W
Facility Reference Pt			3133484.38	1331482.52	40°14'32.388"N	105°01'18.588"W
Field Reference Pt			3133072.77	1341057.53	40°16'07.032"N	105°01'23.232"W

WELLPATH DATUM

Calculation method	Minimum curvature	XTREME 18 (17") (RKB) to Facility Vertical Datum	5097.00ft
Horizontal Reference Pt	Slot	XTREME 18 (17") (RKB) to Mean Sea Level	5097.00ft
Vertical Reference Pt	XTREME 18 (17") (RKB)	XTREME 18 (17") (RKB) to Mud Line at Slot (SLOT#09 LITZENBERGER 13 (1953'FNL & 1064'FEL SEC.8))	5097.00ft
MD Reference Pt	XTREME 18 (17") (RKB)	Section Origin	N 0.00, E 0.00 ft
Field Vertical Reference	Mean Sea Level	Section Azimuth	256.55°



Actual Wellpath Report

LITZENBERGER 13 AWP

Page 2 of 8

**BAKER
HUGHES**
a GE company



REFERENCE WELLPATH IDENTIFICATION

Operator	CUB CREEK ENERGY, LLC	Slot	SLOT#09 LITZENBERGER 13 (1953'FNL & 1064'FEL SEC.8)
Area	COLORADO	Well	LITZENBERGER 13
Field	WELD COUNTY (NAD83, TRUE NORTH)	Wellbore	LITZENBERGER 13 AWB
Facility	SEC.08-T03N-R68W		

WELLPATH DATA (131 stations) † = interpolated/extrapolated station

MD [ft]	Inclination [°]	Azimuth [°]	TVD [ft]	Vert Sect [ft]	North [ft]	East [ft]	DLS [°/100ft]	Comments
0.00†	0.000	206.420	0.00	0.00	0.00	0.00	0.00	
17.00	0.000	206.420	17.00	0.00	0.00	0.00	0.00	
138.00	1.160	206.420	137.99	0.79	-1.10	-0.54	0.96	
229.00	0.910	175.670	228.98	1.49	-2.64	-0.90	0.66	
317.00	1.280	116.270	316.96	0.84	-3.77	0.03	1.29	
501.00	4.910	128.740	500.67	-5.57	-9.61	8.02	1.99	
593.00	6.500	127.510	592.21	-11.26	-15.25	15.22	1.73	
684.00	8.550	137.240	682.42	-17.82	-23.35	23.90	2.64	
775.00	11.600	137.040	772.01	-25.64	-35.02	34.73	3.35	
867.00	13.130	134.590	861.87	-35.73	-49.12	48.48	1.76	
958.00	13.340	128.760	950.46	-47.63	-62.95	64.03	1.48	
1049.00	15.420	125.530	1038.61	-62.01	-76.56	82.06	2.45	
1141.00	14.510	119.170	1127.49	-78.52	-89.28	102.08	2.04	
1233.00	14.810	111.330	1216.50	-96.66	-99.18	123.10	2.18	
1322.00	13.740	109.410	1302.75	-114.88	-106.83	143.66	1.31	
1411.00	14.170	110.380	1389.13	-132.81	-114.14	163.84	0.55	
1495.00	14.890	116.810	1470.45	-149.59	-122.58	183.12	2.10	
1570.00	14.520	119.480	1542.99	-163.82	-131.56	199.90	1.03	
1633.00	13.030	122.300	1604.18	-174.56	-139.24	212.78	2.59	
1723.00	12.530	129.750	1691.95	-187.49	-150.90	228.86	1.91	
1812.00	13.410	134.760	1778.68	-198.71	-164.35	243.62	1.60	
1900.00	13.540	135.870	1864.26	-209.35	-178.93	258.03	0.33	
1989.00	13.440	135.500	1950.81	-220.00	-193.78	272.54	0.15	
2079.00	13.280	134.050	2038.37	-230.95	-208.43	287.30	0.41	
2171.00	13.420	127.810	2127.89	-243.31	-222.32	303.33	1.57	
2263.00	13.390	123.500	2217.39	-257.26	-234.74	320.65	1.09	
2355.00	13.350	126.200	2306.89	-271.41	-246.90	338.10	0.68	
2443.00	13.320	128.370	2392.52	-284.25	-259.19	354.25	0.57	
2529.00	12.830	124.990	2476.29	-296.71	-270.82	369.84	1.06	
2621.00	12.910	124.810	2565.98	-310.33	-282.54	386.64	0.10	



Actual Wellpath Report

LITZENBERGER 13 AWP

Page 3 of 8

**BAKER
HUGHES**
a GE company



REFERENCE WELLPATH IDENTIFICATION

Operator	CUB CREEK ENERGY, LLC	Slot	SLOT#09 LITZENBERGER 13 (1953'FNL & 1064'FEL SEC.8)
Area	COLORADO	Well	LITZENBERGER 13
Field	WELD COUNTY (NAD83, TRUE NORTH)	Wellbore	LITZENBERGER 13 AWP
Facility	SEC.08-T03N-R68W		

WELLPATH DATA (131 stations)

MD [ft]	Inclination [°]	Azimuth [°]	TVD [ft]	Vert Sect [ft]	North [ft]	East [ft]	DLS [°/100ft]	Comments
2713.00	13.010	127.990	2655.64	-323.63	-294.78	403.24	0.78	
2805.00	12.980	128.520	2745.28	-336.45	-307.59	419.49	0.13	
2897.00	12.880	123.370	2834.95	-349.83	-319.66	436.14	1.26	
2989.00	12.830	122.820	2924.65	-363.91	-330.84	453.28	0.14	
3079.00	12.890	123.190	3012.39	-377.71	-341.75	470.08	0.11	
3170.00	12.830	124.680	3101.11	-391.43	-353.06	486.89	0.37	
3262.00	13.270	127.430	3190.73	-404.91	-365.29	503.67	0.83	
3352.00	12.930	125.790	3278.39	-418.00	-377.45	520.04	0.56	
3443.00	13.110	128.620	3367.05	-430.99	-389.85	536.36	0.73	
3534.00	13.220	124.570	3455.66	-444.29	-402.20	552.99	1.02	
3624.00	13.200	123.750	3543.28	-458.16	-413.74	570.01	0.21	
3714.00	13.030	121.950	3630.93	-472.27	-424.82	587.17	0.49	
3806.00	13.220	121.450	3720.53	-487.00	-435.80	604.94	0.24	
3898.00	12.730	123.330	3810.18	-501.39	-446.86	622.38	0.70	
3985.00	13.110	127.890	3894.98	-514.12	-458.18	638.18	1.25	
4075.00	13.080	133.070	3982.64	-526.12	-471.41	653.68	1.30	
4167.00	12.770	133.300	4072.31	-537.44	-485.49	668.68	0.34	
4259.00	13.200	131.680	4161.96	-549.02	-499.45	683.93	0.61	
4351.00	12.870	129.290	4251.59	-561.23	-512.92	699.70	0.69	
4441.00	12.750	126.920	4339.35	-573.63	-525.24	715.40	0.60	
4622.00	13.100	127.690	4515.76	-599.24	-549.77	747.60	0.22	
4712.00	12.990	129.720	4603.44	-611.70	-562.47	763.45	0.52	
4804.00	13.260	130.940	4693.04	-624.05	-576.00	779.37	0.42	
4896.00	13.020	130.960	4782.63	-636.22	-589.70	795.17	0.26	
4987.00	13.120	129.490	4871.27	-648.41	-602.99	810.88	0.38	
5075.00	13.010	129.120	4957.00	-660.45	-615.59	826.27	0.16	
5165.00	12.950	126.380	5044.70	-673.11	-627.97	842.25	0.69	
5257.00	13.030	126.990	5134.34	-686.37	-640.32	858.84	0.17	
5345.00	12.800	129.890	5220.12	-698.51	-652.54	874.24	0.78	
5433.00	13.330	130.580	5305.84	-710.29	-665.39	889.42	0.63	



Actual Wellpath Report

LITZENBERGER 13 AWP

Page 4 of 8



REFERENCE WELLPATH IDENTIFICATION

Operator	CUB CREEK ENERGY, LLC	Slot	SLOT#09 LITZENBERGER 13 (1953'FNL & 1064'FEL SEC.8)
Area	COLORADO	Well	LITZENBERGER 13
Field	WELD COUNTY (NAD83, TRUE NORTH)	Wellbore	LITZENBERGER 13 AWP
Facility	SEC.08-T03N-R68W		

WELLPATH DATA (131 stations) † = interpolated/extrapolated station

MD [ft]	Inclination [°]	Azimuth [°]	TVD [ft]	Vert Sect [ft]	North [ft]	East [ft]	DLS [°/100ft]	Comments
5526.00	13.600	131.440	5396.28	-722.87	-679.60	905.76	0.36	
5617.00	13.670	130.120	5484.72	-735.41	-693.61	922.01	0.35	
5708.00	13.700	128.100	5573.13	-748.50	-707.19	938.71	0.53	
5798.00	13.160	128.710	5660.67	-761.41	-720.17	955.09	0.62	
5888.00	13.020	128.460	5748.33	-773.95	-732.89	971.02	0.17	
5981.00	12.680	128.020	5839.01	-786.78	-745.69	987.27	0.38	
6070.00	12.870	128.180	5925.80	-799.01	-757.83	1002.75	0.22	
6161.00	12.880	129.120	6014.51	-811.47	-770.50	1018.59	0.23	
6250.00	13.080	129.330	6101.24	-823.59	-783.14	1034.08	0.23	
6341.00	12.940	122.920	6189.91	-836.85	-795.20	1050.59	1.59	
6430.00	12.810	126.970	6276.67	-850.01	-806.55	1066.84	1.02	
6522.00	12.980	129.870	6366.35	-862.68	-819.31	1082.92	0.73	
6615.00	12.860	123.490	6457.00	-875.99	-831.72	1099.57	1.54	
6708.00	7.340	181.140	6548.73	-881.58	-843.40	1108.11	11.66	
6798.00	10.280	232.270	6637.79	-872.79	-854.08	1101.63	8.92	
6889.00	16.790	265.170	6726.33	-852.35	-860.17	1082.06	10.81	
6982.00	24.650	273.040	6813.27	-820.42	-860.27	1049.26	8.95	
7075.00	32.930	268.940	6894.71	-777.05	-859.71	1004.53	9.15	
7167.00	43.450	266.420	6966.92	-721.30	-862.16	947.79	11.56	
7258.00	53.490	266.350	7027.18	-654.26	-866.45	879.89	11.03	
7349.00	64.530	267.100	7073.96	-577.60	-870.87	802.13	12.15	
7441.00	76.770	267.450	7104.38	-492.48	-874.98	715.59	13.31	
7534.00	90.030	269.380	7115.05	-402.28	-877.51	623.45	14.41	
7544.00†	90.389	269.500	7115.01	-392.53	-877.61	613.45	3.78	CROSS 460' SETBACK (2485'FSL & 460'FEL SEC.8)
7624.00	93.260	270.460	7112.47	-314.77	-877.63	533.50	3.78	
7714.00	93.300	270.270	7107.32	-227.51	-877.06	443.65	0.22	
7806.00	91.880	269.220	7103.16	-138.04	-877.47	351.75	1.92	
7898.00	90.920	268.180	7100.91	-48.12	-879.56	259.80	1.54	
7990.00	91.110	268.420	7099.28	41.93	-882.29	167.86	0.33	
8079.00	91.200	268.720	7097.49	128.97	-884.51	78.90	0.35	



Actual Wellpath Report

LITZENBERGER 13 AWP

Page 5 of 8

**BAKER
HUGHES**
a GE company



REFERENCE WELLPATH IDENTIFICATION

Operator	CUB CREEK ENERGY, LLC	Slot	SLOT#09 LITZENBERGER 13 (1953'FNL & 1064'FEL SEC.8)
Area	COLORADO	Well	LITZENBERGER 13
Field	WELD COUNTY (NAD83, TRUE NORTH)	Wellbore	LITZENBERGER 13 AWP
Facility	SEC.08-T03N-R68W		

WELLPATH DATA (131 stations)

MD [ft]	Inclination [°]	Azimuth [°]	TVD [ft]	Vert Sect [ft]	North [ft]	East [ft]	DLS [°/100ft]	Comments
8170.00	93.140	269.260	7094.04	217.76	-886.11	-12.01	2.21	
8261.00	93.330	269.450	7088.91	306.36	-887.13	-102.86	0.30	
8351.00	92.460	269.450	7084.36	393.97	-888.00	-192.74	0.97	
8442.00	90.490	269.180	7082.02	482.69	-889.08	-283.70	2.19	
8532.00	89.110	269.390	7082.33	570.48	-890.21	-373.69	1.55	
8623.00	86.740	268.800	7085.63	659.24	-891.64	-464.61	2.68	
8715.00	83.930	267.630	7093.11	749.03	-894.50	-556.25	3.31	
8805.00	81.730	268.190	7104.34	836.57	-897.75	-645.48	2.52	
8895.00	81.350	271.090	7117.59	923.27	-898.31	-734.49	3.21	
8986.00	72.490	270.110	7138.16	1009.17	-897.37	-823.04	9.79	
9078.00	75.280	269.400	7163.70	1095.21	-897.75	-911.41	3.12	
9169.00	77.930	269.970	7184.78	1181.41	-898.24	-999.93	2.98	
9262.00	80.790	270.880	7201.95	1270.13	-897.56	-1091.31	3.22	
9352.00	83.520	271.910	7214.23	1356.30	-895.38	-1180.44	3.24	
9445.00	86.400	272.800	7222.40	1445.43	-891.58	-1272.99	3.24	
9537.00	89.450	270.860	7225.73	1534.11	-888.64	-1364.86	3.93	
9630.00	91.850	270.380	7224.67	1624.31	-887.64	-1457.85	2.63	
9721.00	94.870	271.500	7219.34	1712.29	-886.15	-1548.67	3.54	
9813.00	97.780	270.830	7209.21	1800.76	-884.29	-1640.08	3.24	
9903.00	99.960	271.130	7195.33	1886.88	-882.77	-1728.98	2.44	
9994.00	102.190	268.810	7177.85	1973.73	-882.81	-1818.27	3.50	
10086.00	102.030	266.240	7158.54	2062.03	-886.69	-1908.13	2.74	
10177.00	102.220	266.960	7139.43	2149.63	-891.97	-1996.95	0.80	
10359.00	99.060	265.360	7105.83	2325.97	-903.96	-2175.39	1.94	
10450.00	97.320	266.180	7092.87	2414.87	-910.60	-2265.21	2.11	
10628.00	92.460	268.720	7077.69	2588.96	-918.47	-2442.32	3.08	
10720.00	90.150	269.590	7075.60	2678.71	-919.83	-2534.28	2.68	
10811.00	90.370	273.380	7075.19	2766.62	-917.47	-2625.23	4.17	
10900.00	90.860	275.880	7074.23	2851.21	-910.29	-2713.93	2.86	
10991.00	91.880	275.290	7072.05	2937.21	-901.44	-2804.47	1.29	



Actual Wellpath Report

LITZENBERGER 13 AWP

Page 6 of 8

**BAKER
HUGHES**
a GE company



REFERENCE WELLPATH IDENTIFICATION

Operator	CUB CREEK ENERGY, LLC	Slot	SLOT#09 LITZENBERGER 13 (1953'FNL & 1064'FEL SEC.8)
Area	COLORADO	Well	LITZENBERGER 13
Field	WELD COUNTY (NAD83, TRUE NORTH)	Wellbore	LITZENBERGER 13 AWB
Facility	SEC.08-T03N-R68W		

WELLPATH DATA (131 stations)

MD [ft]	Inclination [°]	Azimuth [°]	TVD [ft]	Vert Sect [ft]	North [ft]	East [ft]	DLS [°/100ft]	Comments
11083.00	91.820	270.920	7069.08	3025.33	-896.46	-2896.26	4.75	
11170.00	92.150	268.620	7066.07	3109.97	-896.80	-2983.20	2.67	
11262.00	91.910	267.370	7062.81	3200.08	-900.02	-3075.09	1.38	
11354.00	92.030	266.630	7059.65	3290.51	-904.83	-3166.91	0.81	
11442.00	91.970	266.790	7056.58	3377.07	-909.88	-3254.71	0.19	
11532.00	92.520	265.650	7053.05	3465.72	-915.81	-3344.44	1.41	
11623.00	92.490	268.750	7049.07	3555.06	-920.25	-3435.23	3.40	
11715.00	92.280	271.900	7045.24	3644.33	-919.73	-3527.14	3.43	
11806.00	92.590	273.670	7041.38	3731.62	-915.31	-3617.95	1.97	
11895.00	92.530	269.560	7037.40	3817.45	-912.81	-3706.81	4.61	BHGE MWD LAST SURVEY (2468'FSL & 500'FWL SEC.8)
11920.00	92.530	269.560	7036.30	3841.79	-913.00	-3731.78	0.00	PROJECTION TO BIT (2468'FSL & 475'FWL SEC.8)

HOLE & CASING SECTIONS - Ref Wellbore: LITZENBERGER 13 AWB Ref Wellpath: LITZENBERGER 13 AWP

String/Diameter	Start MD [ft]	End MD [ft]	Interval [ft]	Start TVD [ft]	End TVD [ft]	Start N/S [ft]	Start E/W [ft]	End N/S [ft]	End E/W [ft]
9.625in Casing Surface	17.00	1543.00	1526.00	17.00	1516.86	0.00	0.00	-128.26	193.95



Actual Wellpath Report

LITZENBERGER 13 AWP

Page 7 of 8

**BAKER
HUGHES**
a GE company



REFERENCE WELLPATH IDENTIFICATION

Operator	CUB CREEK ENERGY, LLC	Slot	SLOT#09 LITZENBERGER 13 (1953'FNL & 1064'FEL SEC.8)
Area	COLORADO	Well	LITZENBERGER 13
Field	WELD COUNTY (NAD83, TRUE NORTH)	Wellbore	LITZENBERGER 13 AWB
Facility	SEC.08-T03N-R68W		

TARGETS

Name	TVD [ft]	North [ft]	East [ft]	Grid East [US ft]	Grid North [US ft]	Latitude	Longitude	Shape
SEC.08-T03N-R68W	-2.00	25.50	-120.04	3133484.38	1331482.52	40°14'32.388"N	105°01'18.588"W	polygon
LITZENBERGER 13 BHL REV-1 (2485'FSL & 460'FWL SEC.8)	7025.90	-895.90	-3746.61	3129863.00	1330541.60	40°14'23.280"N	105°02'05.352"W	point
LITZENBERGER 13 BHL REV-2 (2485'FSL & 460'FWL SEC.8)	7030.00	-895.90	-3746.61	3129863.00	1330541.60	40°14'23.280"N	105°02'05.352"W	point
LITZENBERGER 13 BHL REV-3 (2485'FSL & 460'FWL SEC.8)	7035.00	-895.90	-3746.61	3129863.00	1330541.60	40°14'23.280"N	105°02'05.352"W	point
LITZENBERGER 13 EP REV-1 (2485'FSL & 460'FEL SEC.8)	7102.00	-877.96	614.20	3134223.45	1330583.07	40°14'23.460"N	105°01'09.120"W	point
LITZENBERGER 13 EP REV-2 (2485'FSL & 460'FEL SEC.8)	7114.00	-877.96	614.20	3134223.45	1330583.08	40°14'23.460"N	105°01'09.120"W	point
SEC.08-T03N-R68W HARDLINES 460' SETBACKS	7314.00	25.50	-120.04	3133484.38	1331482.52	40°14'32.388"N	105°01'18.588"W	polygon

WELLPATH COMPOSITION - Ref Wellbore: LITZENBERGER 13 AWB Ref Wellpath: LITZENBERGER 13 AWP

Start MD [ft]	End MD [ft]	Positional Uncertainty Model	Log Name/Comment	Wellbore
17.00	1495.00	Custom BHI NaviTrak (Standard Rotating) (Rockies 0.03Gt model)	Custom BHI NaviTrak (Standard Rotating+Axial Corr) (Rockies 0.03Gt model) 13.5 <138'-1495'>	LITZENBERGER 13 AWB
1495.00	11895.00	Custom BHI AutoTrak Curve (Short) (Rockies 0.03Gt model)	BHI ATC 8.5" (SHORT, ROCKIES GT)<1570-11895>	LITZENBERGER 13 AWB
11895.00	11920.00	Blind Drilling (std)	Projection to bit	LITZENBERGER 13 AWB



Actual Wellpath Report

LITZENBERGER 13 AWP

Page 8 of 8

**BAKER
HUGHES**
a GE company



REFERENCE WELLPATH IDENTIFICATION

Operator	CUB CREEK ENERGY, LLC	Slot	SLOT#09 LITZENBERGER 13 (1953'FNL & 1064'FEL SEC.8)
Area	COLORADO	Well	LITZENBERGER 13
Field	WELD COUNTY (NAD83, TRUE NORTH)	Wellbore	LITZENBERGER 13 AWB
Facility	SEC.08-T03N-R68W		

WELLPATH COMMENTS

MD [ft]	Inclination [°]	Azimuth [°]	TVD [ft]	Comment
7544.00	90.389	269.500	7115.01	CROSS 460' SETBACK (2485'FSL & 460'FEL SEC.8)
11895.00	92.530	269.560	7037.40	BHGE MWD LAST SURVEY (2468'FSL & 500'FWL SEC.8)
11920.00	92.530	269.560	7036.30	PROJECTION TO BIT (2468'FSL & 475'FWL SEC.8)