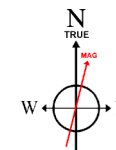
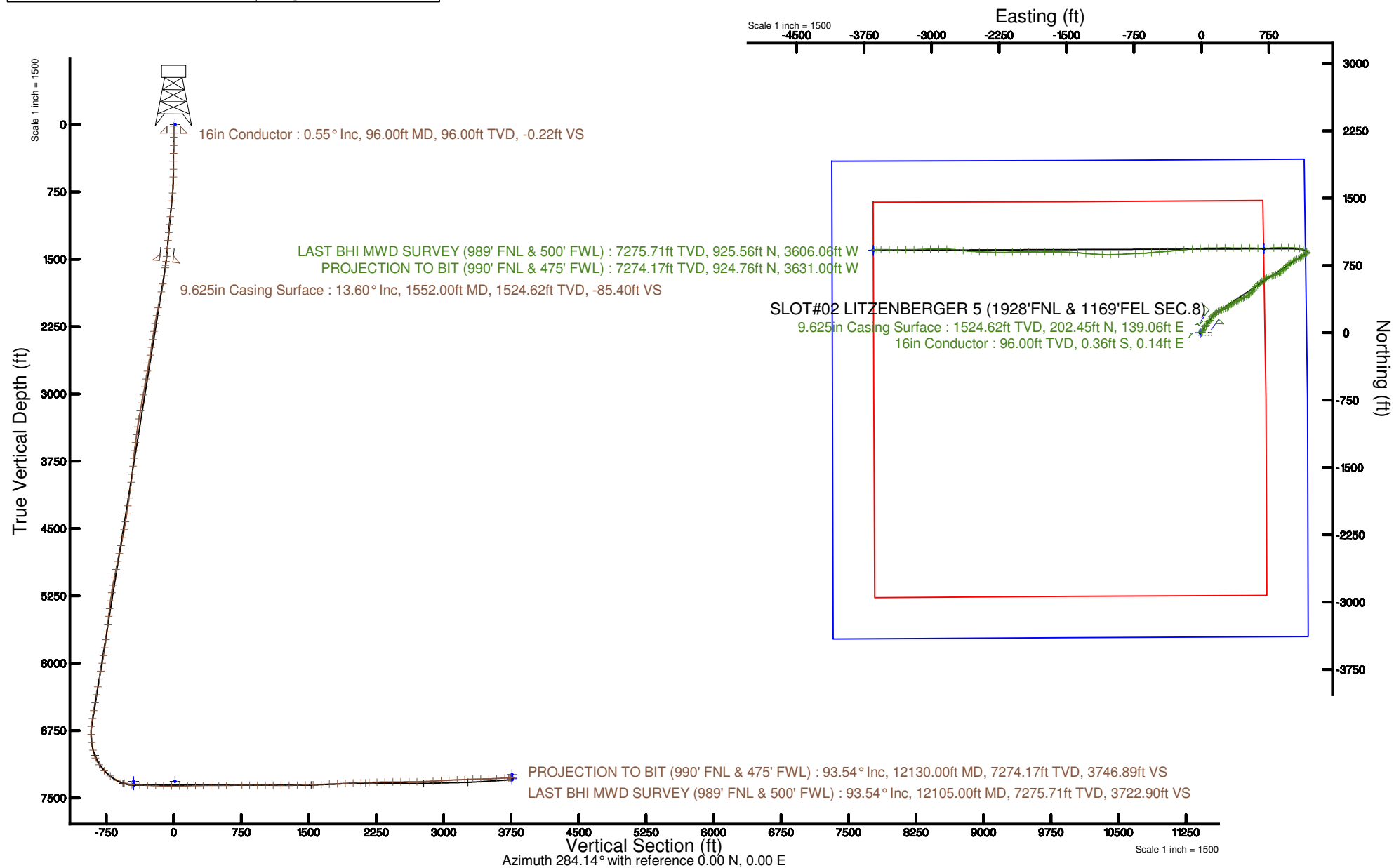


Location:	COLORADO	Slot:	SLOT#02 LITZENBERGER 5 (1928'FNL & 1169'FEL SEC.8)
Field:	WELD COUNTY (NAD83, TRUE NORTH)	Well:	LITZENBERGER 5
Facility:	SEC.08-T03N-R68W	Wellbore:	LITZENBERGER 5 PWB



To correct azimuth from Magnetic to True add 8.50 degrees

<p>Pit reference wellpath is LITZENBERGER 5 PWP REV-D.0</p> <p>True vertical depths are referenced to XTREME 18 (17) (RKB)</p> <p>Measured depths are referenced to XTREME 18 (17) (RKB)</p> <p>XTREME 18 (17) (RKB) to Mean Sea Level: 5099 feet</p> <p>Mean Sea Level to Mud line (At Slot SLO7402 LITZENBERGER 5 (192)FNL & 1169FFL SEC.8)) is 7 feet</p> <p>Coordinates are in feet referenced to Slot</p>	<p>Grid System: NAD83 / Lambert Colorado SP, Northern Zone (501), US feet</p> <p>* - Wellpath was transformed from a different geoidetic datum</p> <p>North is referenced to True north</p> <p>Scale: True distance</p> <p>Depths are in feet</p> <p>Created by: ccookman on 2017-06-29</p> <p>Databases: WA, Denver</p>
--	--





Actual Wellpath Report

LITZENBERGER 5 AWP

Page 1 of 9

**BAKER
HUGHES**
a GE company



REFERENCE WELLPATH IDENTIFICATION

Operator	CUB CREEK ENERGY, LLC	Slot	SLOT#02 LITZENBERGER 5 (1928'FNL & 1169'FEL SEC.8)
Area	COLORADO	Well	LITZENBERGER 5
Field	WELD COUNTY (NAD83, TRUE NORTH)	Wellbore	LITZENBERGER 5 AWP
Facility	SEC.08-T03N-R68W		

REPORT SETUP INFORMATION

Projection System	NAD83 / Lambert Colorado SP, Northern Zone (501), US feet	Software System	WellArchitect® 5.1
North Reference	True	User	Wagnjam
Scale	0.999957	Report Generated	10/25/2017 at 4:15:48 PM
Convergence at slot	0.31° East	Database/Source file	WA_DEN_Denver_Defn/LITZENBERGER_5_AWP.xml

WELLPATH LOCATION

	Local coordinates		Grid coordinates		Geographic coordinates	
	North[ft]	East[ft]	Easting[US ft]	Northing[US ft]	Latitude	Longitude
Slot Location	0.00	13.96	3133498.34	1331482.60	40°14'32.388"N	105°01'18.408"W
Facility Reference Pt			3133484.38	1331482.52	40°14'32.388"N	105°01'18.588"W
Field Reference Pt			3133072.77	1341057.53	40°16'07.032"N	105°01'23.232"W

WELLPATH DATUM

Calculation method	Minimum curvature	XTREME 18 (17') (RKB) to Facility Vertical Datum	5099.00ft
Horizontal Reference Pt	Slot	XTREME 18 (17') (RKB) to Mean Sea Level	5099.00ft
Vertical Reference Pt	XTREME 18 (17') (RKB)	XTREME 18 (17') (RKB) to Mud Line at Slot (SLOT#02 LITZENBERGER 5 (1928'FNL & 1169'FEL SEC.8))	5099.00ft
MD Reference Pt	XTREME 18 (17') (RKB)	Section Origin	N 0.00, E 0.00 ft
Field Vertical Reference	Mean Sea Level	Section Azimuth	284.14°



Actual Wellpath Report

LITZENBERGER 5 AWP

Page 2 of 9



REFERENCE WELLPATH IDENTIFICATION

Operator	CUB CREEK ENERGY, LLC	Slot	SLOT#02 LITZENBERGER 5 (1928'FNL & 1169'FEL SEC.8)
Area	COLORADO	Well	LITZENBERGER 5
Field	WELD COUNTY (NAD83, TRUE NORTH)	Wellbore	LITZENBERGER 5 AWB
Facility	SEC.08-T03N-R68W		

WELLPATH DATA (136 stations) † = interpolated/extrapolated station

MD [ft]	Inclination [°]	Azimuth [°]	TVD [ft]	Vert Sect [ft]	North [ft]	East [ft]	DLS [°/100ft]	Comments
0.00†	0.000	159.010	0.00	0.00	0.00	0.00	0.00	
17.00	0.000	159.010	17.00	0.00	0.00	0.00	0.00	
140.00	0.860	159.010	140.00	-0.53	-0.86	0.33	0.70	
232.00	0.530	82.860	231.99	-1.32	-1.45	1.00	0.97	
320.00	2.120	25.500	319.97	-2.02	0.07	2.10	2.15	
407.00	4.040	17.910	406.84	-2.54	4.44	3.74	2.25	
497.00	6.070	18.880	496.48	-3.15	11.96	6.26	2.26	
585.00	8.290	22.520	583.79	-4.46	22.22	10.19	2.57	
674.00	10.490	26.750	671.59	-7.16	35.38	16.30	2.59	
766.00	12.730	35.840	761.71	-12.74	51.08	26.00	3.14	
856.00	14.100	38.060	849.25	-20.85	67.75	38.57	1.63	
945.00	14.210	37.250	935.55	-29.53	84.98	51.86	0.25	
1037.00	14.450	37.330	1024.69	-38.49	103.10	65.66	0.26	
1129.00	14.290	36.550	1113.81	-47.34	121.35	79.38	0.27	
1220.00	13.720	33.830	1202.10	-55.26	139.34	92.08	0.96	
1311.00	13.640	33.790	1290.52	-62.50	157.22	104.05	0.09	
1403.00	13.680	36.230	1379.92	-70.24	175.01	116.52	0.63	
1495.00	13.960	39.720	1469.26	-79.12	192.32	130.04	0.96	
1626.00	13.220	49.060	1596.61	-94.53	214.29	151.45	1.77	
1717.00	13.500	53.800	1685.15	-107.26	227.38	167.89	1.24	
1809.00	13.620	59.640	1774.59	-121.84	239.20	185.90	1.49	
1901.00	13.680	65.610	1863.99	-138.08	249.17	205.15	1.53	
1993.00	13.660	72.570	1953.39	-155.85	256.92	225.43	1.79	
2083.00	13.600	69.800	2040.86	-173.64	263.75	245.50	0.73	
2174.00	13.430	65.620	2129.34	-190.74	271.81	265.17	1.09	
2264.00	13.570	61.080	2216.86	-206.64	281.23	283.93	1.19	
2354.00	13.470	53.820	2304.37	-221.05	292.53	301.63	1.89	
2445.00	13.820	51.750	2392.80	-234.45	305.51	318.72	0.66	
2537.00	13.470	51.710	2482.20	-247.69	318.95	335.76	0.38	
2625.00	11.750	60.000	2568.09	-260.37	329.79	351.57	2.83	



Actual Wellpath Report

LITZENBERGER 5 AWP

Page 3 of 9

**BAKER
HUGHES**
a GE company



REFERENCE WELLPATH IDENTIFICATION

Operator	CUB CREEK ENERGY, LLC	Slot	SLOT#02 LITZENBERGER 5 (1928'FNL & 1169'FEL SEC.8)
Area	COLORADO	Well	LITZENBERGER 5
Field	WELD COUNTY (NAD83, TRUE NORTH)	Wellbore	LITZENBERGER 5 AWB
Facility	SEC.08-T03N-R68W		

WELLPATH DATA (136 stations)

MD [ft]	Inclination [°]	Azimuth [°]	TVD [ft]	Vert Sect [ft]	North [ft]	East [ft]	DLS [°/100ft]	Comments
2716.00	13.710	66.240	2656.85	-275.53	338.77	369.46	2.63	
2808.00	13.470	60.670	2746.28	-291.91	348.41	388.78	1.45	
2899.00	13.500	56.880	2834.77	-306.81	359.40	406.92	0.97	
2988.00	13.400	64.840	2921.34	-321.84	369.46	424.96	2.08	
3080.00	13.610	64.370	3010.79	-338.41	378.68	444.37	0.26	
3172.00	13.430	65.020	3100.24	-355.02	387.87	463.81	0.26	
3264.00	13.690	63.200	3189.68	-371.54	397.29	483.21	0.54	
3356.00	13.590	55.120	3279.09	-386.85	408.38	501.80	2.07	
3446.00	13.700	51.950	3366.55	-400.32	421.00	518.86	0.84	
3535.00	13.650	48.180	3453.03	-412.66	434.50	534.99	1.00	
3625.00	13.240	49.800	3540.57	-424.61	448.23	550.78	0.62	
3715.00	13.670	43.160	3628.10	-435.78	462.64	565.92	1.78	
3806.00	13.720	33.980	3716.52	-444.66	479.44	579.31	2.39	
3897.00	14.050	36.480	3804.87	-452.53	497.27	591.91	0.75	
3989.00	14.240	42.370	3894.08	-462.12	514.61	606.18	1.58	
4081.00	14.200	44.320	3983.26	-473.15	531.04	621.69	0.52	
4172.00	14.060	50.610	4071.51	-485.33	546.04	638.03	1.69	
4262.00	13.700	51.280	4158.89	-498.27	559.65	654.79	0.44	
4352.00	13.610	49.240	4246.34	-510.79	573.23	671.13	0.54	
4444.00	13.760	49.560	4335.73	-523.36	587.39	687.66	0.18	
4535.00	13.180	54.530	4424.23	-536.35	600.43	704.34	1.42	
4625.00	13.840	65.320	4511.75	-551.39	610.88	722.48	2.89	
4717.00	13.580	69.440	4601.13	-568.85	619.27	742.59	1.10	
4807.00	13.820	70.140	4688.57	-586.45	626.63	762.60	0.32	
4899.00	13.860	69.200	4777.90	-604.59	634.28	783.23	0.25	
4989.00	13.590	73.620	4865.34	-622.54	641.09	803.46	1.20	
5080.00	13.730	71.130	4953.76	-640.80	647.59	823.93	0.66	
5170.00	13.910	65.580	5041.16	-658.22	655.52	843.89	1.49	
5262.00	14.000	57.010	5130.46	-674.44	666.15	863.30	2.25	
5350.00	13.810	56.690	5215.88	-688.78	677.72	881.00	0.23	



Actual Wellpath Report

LITZENBERGER 5 AWP

Page 4 of 9

**BAKER
HUGHES**
a GE company



REFERENCE WELLPATH IDENTIFICATION

Operator	CUB CREEK ENERGY, LLC	Slot	SLOT#02 LITZENBERGER 5 (1928'FNL & 1169'FEL SEC.8)
Area	COLORADO	Well	LITZENBERGER 5
Field	WELD COUNTY (NAD83, TRUE NORTH)	Wellbore	LITZENBERGER 5 AWB
Facility	SEC.08-T03N-R68W		

WELLPATH DATA (136 stations)

MD [ft]	Inclination [°]	Azimuth [°]	TVD [ft]	Vert Sect [ft]	North [ft]	East [ft]	DLS [°/100ft]	Comments
5441.00	13.450	47.150	5304.32	-701.90	690.88	897.84	2.50	
5530.00	12.200	42.490	5391.11	-712.00	704.86	911.78	1.82	
5619.00	13.620	45.040	5477.85	-721.85	719.20	925.55	1.72	
5708.00	13.290	44.260	5564.41	-732.37	733.93	940.10	0.42	
5796.00	13.130	43.380	5650.08	-742.33	748.44	954.03	0.29	
5886.00	13.630	49.910	5737.64	-753.52	762.70	969.16	1.77	
5978.00	13.740	53.600	5827.03	-766.80	776.16	986.25	0.96	
6068.00	13.520	56.870	5914.50	-780.73	788.25	1003.66	0.89	
6157.00	13.510	60.690	6001.04	-795.34	799.03	1021.44	1.00	
6247.00	13.720	62.820	6088.51	-810.99	809.05	1040.10	0.60	
6335.00	13.630	64.470	6174.02	-826.81	818.28	1058.74	0.45	
6427.00	13.490	64.110	6263.45	-843.37	827.64	1078.18	0.18	
6517.00	13.600	61.610	6350.95	-859.20	837.26	1096.93	0.66	
6608.00	13.450	58.780	6439.43	-874.53	847.83	1115.39	0.75	
6698.00	13.800	55.610	6526.89	-888.99	859.32	1133.20	0.92	
6788.00	13.730	55.010	6614.31	-903.09	871.51	1150.81	0.18	
6878.00	12.670	48.370	6701.94	-915.63	884.19	1166.94	2.05	
6969.00	9.130	340.210	6791.61	-917.22	897.66	1171.97	13.75	
7061.00	5.740	316.650	6882.84	-909.26	907.88	1166.34	4.88	
7148.00	12.280	306.490	6968.73	-897.02	916.56	1155.90	7.71	
7238.00	23.430	292.100	7054.29	-870.36	929.03	1131.54	13.23	
7325.00	34.870	279.340	7130.22	-828.26	939.62	1090.80	14.90	
7413.00	44.700	271.880	7197.80	-772.78	944.73	1034.88	12.40	
7503.00	54.160	272.740	7256.27	-705.94	947.52	966.65	10.54	
7593.00	63.240	269.390	7302.99	-631.15	948.84	889.86	10.58	
7684.00	74.190	265.990	7335.98	-549.99	945.33	805.28	12.52	
7774.00	83.990	269.170	7353.00	-465.39	941.65	717.10	11.43	
7864.00	89.850	271.580	7357.83	-378.14	942.24	627.28	7.04	
7955.00	87.260	270.200	7360.12	-289.60	943.65	536.33	3.22	
8047.00	88.090	270.540	7363.86	-200.32	944.25	444.41	0.97	



Actual Wellpath Report

LITZENBERGER 5 AWP

Page 5 of 9



REFERENCE WELLPATH IDENTIFICATION

Operator	CUB CREEK ENERGY, LLC	Slot	SLOT#02 LITZENBERGER 5 (1928'FNL & 1169'FEL SEC.8)
Area	COLORADO	Well	LITZENBERGER 5
Field	WELD COUNTY (NAD83, TRUE NORTH)	Wellbore	LITZENBERGER 5 AWP
Facility	SEC.08-T03N-R68W		

WELLPATH DATA (136 stations)

MD [ft]	Inclination [°]	Azimuth [°]	TVD [ft]	Vert Sect [ft]	North [ft]	East [ft]	DLS [°/100ft]	Comments
8138.00	88.060	270.430	7366.91	-111.94	945.02	353.47	0.13	
8230.00	90.370	269.980	7368.17	-22.66	945.35	261.48	2.56	
8320.00	91.230	269.600	7366.92	64.52	945.02	171.49	1.04	
8412.00	91.380	268.990	7364.82	153.43	943.88	79.52	0.68	
8504.00	90.990	267.190	7362.92	241.82	940.82	-12.40	2.00	
8594.00	90.650	264.540	7361.63	327.27	934.33	-102.15	2.97	
8686.00	90.220	265.150	7360.93	414.10	926.06	-193.78	0.81	
8777.00	90.520	264.180	7360.34	499.89	917.60	-284.38	1.12	
8867.00	90.280	265.080	7359.72	584.72	909.18	-373.98	1.03	
8959.00	90.490	264.900	7359.10	671.63	901.15	-465.63	0.30	
9051.00	89.970	264.570	7358.73	758.40	892.70	-557.24	0.67	
9141.00	89.690	267.170	7359.00	843.86	886.22	-646.99	2.91	
9231.00	90.000	268.650	7359.24	930.27	882.94	-736.93	1.68	
9323.00	90.030	265.940	7359.22	1018.32	878.60	-828.82	2.95	
9415.00	89.910	267.190	7359.26	1106.02	873.09	-920.65	1.36	
9505.00	89.970	268.970	7359.36	1192.51	870.07	-1010.60	1.98	
9597.00	89.880	272.490	7359.48	1281.98	871.24	-1102.58	3.83	
9688.00	91.450	274.690	7358.42	1371.43	876.94	-1193.38	2.97	
9780.00	91.420	274.540	7356.12	1462.14	884.34	-1285.06	0.17	
9870.00	91.910	274.420	7353.50	1550.82	891.37	-1374.74	0.56	
9960.00	92.090	272.740	7350.36	1639.24	896.98	-1464.51	1.88	
10052.00	92.500	271.600	7346.68	1729.17	900.46	-1556.37	1.32	
10144.00	92.680	269.790	7342.52	1818.55	901.58	-1648.26	1.98	
10236.00	92.490	268.950	7338.37	1907.42	900.57	-1740.16	0.94	
10326.00	92.620	270.780	7334.36	1994.55	900.36	-1830.07	2.04	
10416.00	92.030	270.610	7330.71	2082.02	901.45	-1919.99	0.68	
10507.00	91.660	269.060	7327.78	2170.15	901.19	-2010.94	1.75	
10598.00	91.600	268.320	7325.19	2257.82	899.11	-2101.88	0.82	
10690.00	91.110	269.200	7323.01	2346.50	897.12	-2193.83	1.09	
10782.00	90.030	270.670	7322.10	2435.68	897.01	-2285.82	1.98	



Actual Wellpath Report

LITZENBERGER 5 AWP

Page 6 of 9

**BAKER
HUGHES**
a GE company



REFERENCE WELLPATH IDENTIFICATION

Operator	CUB CREEK ENERGY, LLC	Slot	SLOT#02 LITZENBERGER 5 (1928'FNL & 1169'FEL SEC.8)
Area	COLORADO	Well	LITZENBERGER 5
Field	WELD COUNTY (NAD83, TRUE NORTH)	Wellbore	LITZENBERGER 5 AWB
Facility	SEC.08-T03N-R68W		

WELLPATH DATA (136 stations)

MD [ft]	Inclination [°]	Azimuth [°]	TVD [ft]	Vert Sect [ft]	North [ft]	East [ft]	DLS [°/100ft]	Comments
10873.00	90.180	271.600	7321.93	2524.35	898.81	-2376.80	1.04	
10965.00	90.620	272.700	7321.29	2614.34	902.27	-2468.73	1.29	
11056.00	91.110	275.110	7319.91	2703.88	908.46	-2559.50	2.70	
11146.00	92.370	275.720	7317.18	2792.79	916.95	-2649.06	1.56	
11237.00	93.020	275.940	7312.90	2882.74	926.18	-2739.49	0.75	
11329.00	93.020	272.980	7308.06	2973.29	933.33	-2831.07	3.21	
11419.00	93.080	270.210	7303.27	3061.01	935.83	-2920.90	3.07	
11511.00	92.460	267.100	7298.82	3149.56	933.67	-3012.76	3.44	
11601.00	92.460	267.590	7294.96	3235.64	929.51	-3102.58	0.54	
11693.00	91.510	269.080	7291.77	3324.11	926.84	-3194.48	1.92	
11784.00	91.020	269.030	7289.76	3411.95	925.33	-3285.44	0.54	
11876.00	91.850	269.450	7287.46	3500.83	924.11	-3377.41	1.01	
11968.00	92.520	271.650	7283.95	3590.18	925.00	-3469.33	2.50	
12060.00	94.040	269.960	7278.68	3679.55	926.29	-3561.16	2.47	
12105.00	93.540	268.170	7275.71	3722.90	925.56	-3606.06	4.12	LAST BHI MWD SURVEY (989' FNL & 500' FWL)
12130.00	93.540	268.170	7274.17	3746.89	924.76	-3631.00	0.00	PROJECTION TO BIT (990' FNL & 475' FWL)

HOLE & CASING SECTIONS - Ref Wellbore: LITZENBERGER 5 AWB Ref Wellpath: LITZENBERGER 5 AWP

String/Diameter	Start MD [ft]	End MD [ft]	Interval [ft]	Start TVD [ft]	End TVD [ft]	Start N/S [ft]	Start E/W [ft]	End N/S [ft]	End E/W [ft]
16in Conductor	17.00	96.00	79.00	17.00	96.00	0.00	0.00	-0.36	0.14
13.5in Open Hole	96.00	1552.00	1456.00	96.00	1524.62	-0.36	0.14	202.45	139.06
9.625in Casing Surface	17.00	1552.00	1535.00	17.00	1524.62	0.00	0.00	202.45	139.06
8.5in Open Hole	1552.00	12130.00	10578.00	1524.62	7274.17	202.45	139.06	924.76	-3631.00



Actual Wellpath Report

LITZENBERGER 5 AWP

Page 7 of 9



REFERENCE WELLPATH IDENTIFICATION

Operator	CUB CREEK ENERGY, LLC	Slot	SLOT#02 LITZENBERGER 5 (1928'FNL & 1169'FEL SEC.8)
Area	COLORADO	Well	LITZENBERGER 5
Field	WELD COUNTY (NAD83, TRUE NORTH)	Wellbore	LITZENBERGER 5 AWB
Facility	SEC.08-T03N-R68W		

TARGETS

Name	TVD [ft]	North [ft]	East [ft]	Grid East [US ft]	Grid North [US ft]	Latitude	Longitude	Shape
SEC.08-T03N-R68W	0.00	0.00	-13.96	3133484.38	1331482.52	40°14'32.388"N	105°01'18.588"W	polygon
LITZENBERGER 5 BHL REV-1 (996'FNL & 460'FWL SEC.8)	7240.20	918.31	-3645.83	3129847.77	1332381.19	40°14'41.460"N	105°02'05.424"W	point
LITZENBERGER 5 BHL REV-2 (996'FNL & 460'FWL SEC.8)	7272.20	918.31	-3645.83	3129847.77	1332381.19	40°14'41.460"N	105°02'05.424"W	point
LITZENBERGER 5 BHL REV-3 (996'FNL & 460'FWL SEC.8)	7286.00	918.31	-3645.83	3129847.77	1332381.19	40°14'41.460"N	105°02'05.424"W	point
LITZENBERGER 5 BHL REV-4 (996'FNL & 460'FWL SEC.8)	7298.00	918.31	-3645.83	3129847.77	1332381.19	40°14'41.460"N	105°02'05.424"W	point
LITZENBERGER 5 EP REV-1 (996'FNL & 460'FEL SEC.8)	7316.00	936.27	695.11	3134188.35	1332422.55	40°14'41.640"N	105°01'09.444"W	point
SEC.08-T03N-R68W HARDLINES 460' SETBACKS	7316.00	0.00	-13.96	3133484.38	1331482.52	40°14'32.388"N	105°01'18.588"W	polygon
LITZENBERGER 5 EP REV-3 (996'FNL & 460'FEL SEC.8)	7345.00	936.27	695.11	3134188.35	1332422.55	40°14'41.640"N	105°01'09.444"W	point
LITZENBERGER 5 EP REV-2 (996'FNL & 460'FEL SEC.8)	7348.00	936.27	695.11	3134188.35	1332422.55	40°14'41.640"N	105°01'09.444"W	point
LITZENBERGER 5 EP REV-4 (996'FNL & 460'FEL SEC.8)	7357.00	936.27	695.11	3134188.35	1332422.55	40°14'41.640"N	105°01'09.444"W	point



Actual Wellpath Report

LITZENBERGER 5 AWP

Page 8 of 9



REFERENCE WELLPATH IDENTIFICATION

Operator	CUB CREEK ENERGY, LLC	Slot	SLOT#02 LITZENBERGER 5 (1928'FNL & 1169'FEL SEC.8)
Area	COLORADO	Well	LITZENBERGER 5
Field	WELD COUNTY (NAD83, TRUE NORTH)	Wellbore	LITZENBERGER 5 AWB
Facility	SEC.08-T03N-R68W		

WELLPATH COMPOSITION - Ref Wellbore: LITZENBERGER 5 AWB Ref Wellpath: LITZENBERGER 5 AWP

Start MD [ft]	End MD [ft]	Positional Uncertainty Model	Log Name/Comment	Wellbore
17.00	1495.00	Custom BHI NaviTrak (Standard Rotating+Axial Corr) (Rockies 0.03Gt model)	BHI NAVITRAK 13.5" (STD ROTATING, AXIAL, ROCKIES GT)<140-1495>	LITZENBERGER 5 AWB
1495.00	12105.00	Custom BHI AutoTrak Curve (Short) (Rockies 0.03Gt model)	BHI ATC 8.5" (SHORT, ROCKIES GT)<1626-12105>	LITZENBERGER 5 AWB
12105.00	12130.00	Blind Drilling (std)	Projection to bit	LITZENBERGER 5 AWB



Actual Wellpath Report

LITZENBERGER 5 AWP

Page 9 of 9



REFERENCE WELLPATH IDENTIFICATION

Operator	CUB CREEK ENERGY, LLC	Slot	SLOT#02 LITZENBERGER 5 (1928'FNL & 1169'FEL SEC.8)
Area	COLORADO	Well	LITZENBERGER 5
Field	WELD COUNTY (NAD83, TRUE NORTH)	Wellbore	LITZENBERGER 5 AWB
Facility	SEC.08-T03N-R68W		

WELLPATH COMMENTS

MD [ft]	Inclination [°]	Azimuth [°]	TVD [ft]	Comment
12105.00	93.540	268.170	7275.71	LAST BHI MWD SURVEY (989' FNL & 500' FWL)
12130.00	93.540	268.170	7274.17	PROJECTION TO BIT (990' FNL & 475' FWL)