

Inspection Photos
Location Name: Behring #1
API: 05-123-05198



Photo 1: Location, looking W



Photo 2: Wellhead, looking NW

Inspection Photos
Location Name: Behring #1
API: 05-123-05198



Photo from prior inspection for comparison



Photo 3: Unused pipe S of pit excavation

Inspection Photos
Location Name: Behring #1
API: 05-123-05198



Photo from prior inspection for comparison



Photo 4: Stained soil in engine house

Inspection Photos
Location Name: Behring #1
API: 05-123-05198



Photo from prior inspection for comparison



Photo 5: Stained soil at truck loadout

Inspection Photos
Location Name: Behring #1
API: 05-123-05198



Photo from R Allison's inspection for comparison



Photo 6: Pit excavation

Inspection Photos
Location Name: Behring #1
API: 05-123-05198



Photo from R Allison's inspection for comparison



Photo 7: Land farm, looking W

Inspection Photos
Location Name: Behring #1
API: 05-123-05198



Photo from R Allison's inspection for comparison



Photo 8: Burrows, weeds in berms

Inspection Photos
Location Name: Behring #1
API: 05-123-05198



Photo from R Allison's inspection for comparison



Photo 9: Labels on tanks, rusted production tank, weeds along berms

Inspection Photos
Location Name: Behring #1
API: 05-123-05198

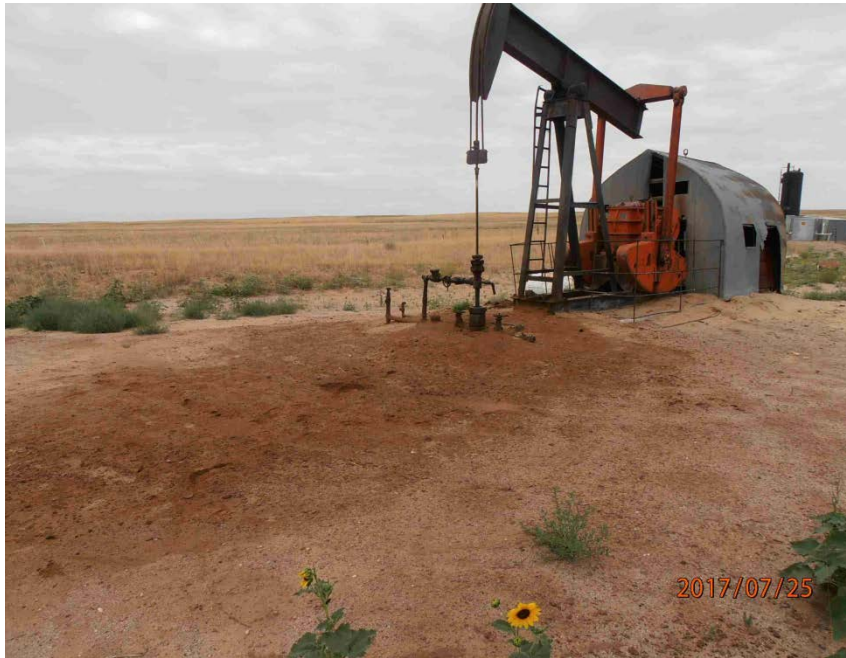


Photo from R Allison's inspection for comparison



Photo 10: Stained soil at wellhead

Inspection Photos
Location Name: Behring #1
API: 05-123-05198



Photo 11: Stained soil around engine house



Photo 12: Open produced water tank

Inspection Photos
Location Name: Behring #1
API: 05-123-05198



Photo 13: Weeds along berm



Photo 14: Weeds around heater treater

Inspection Photos
Location Name: Behring #1
API: 05-123-05198



Photo 15: Debris, risers at pit excavation