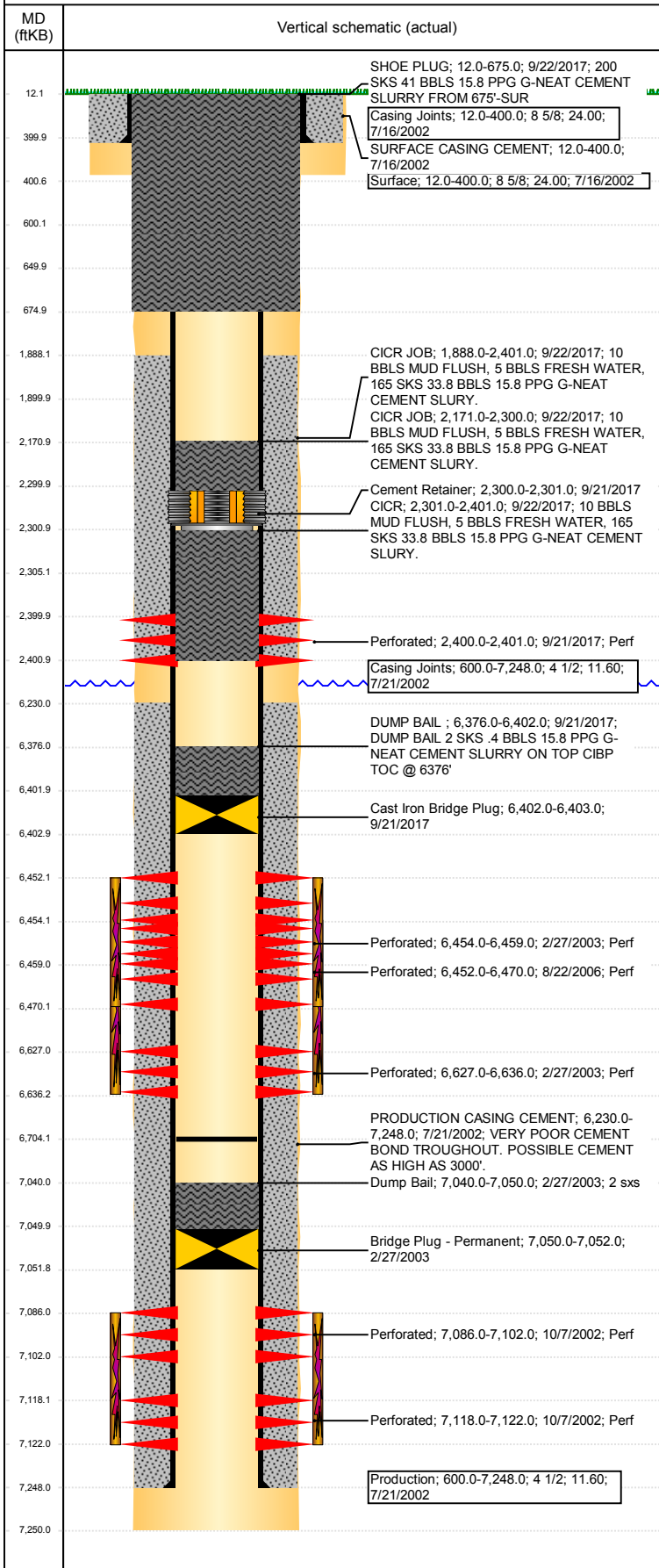


Well Name: WELLS 33-15

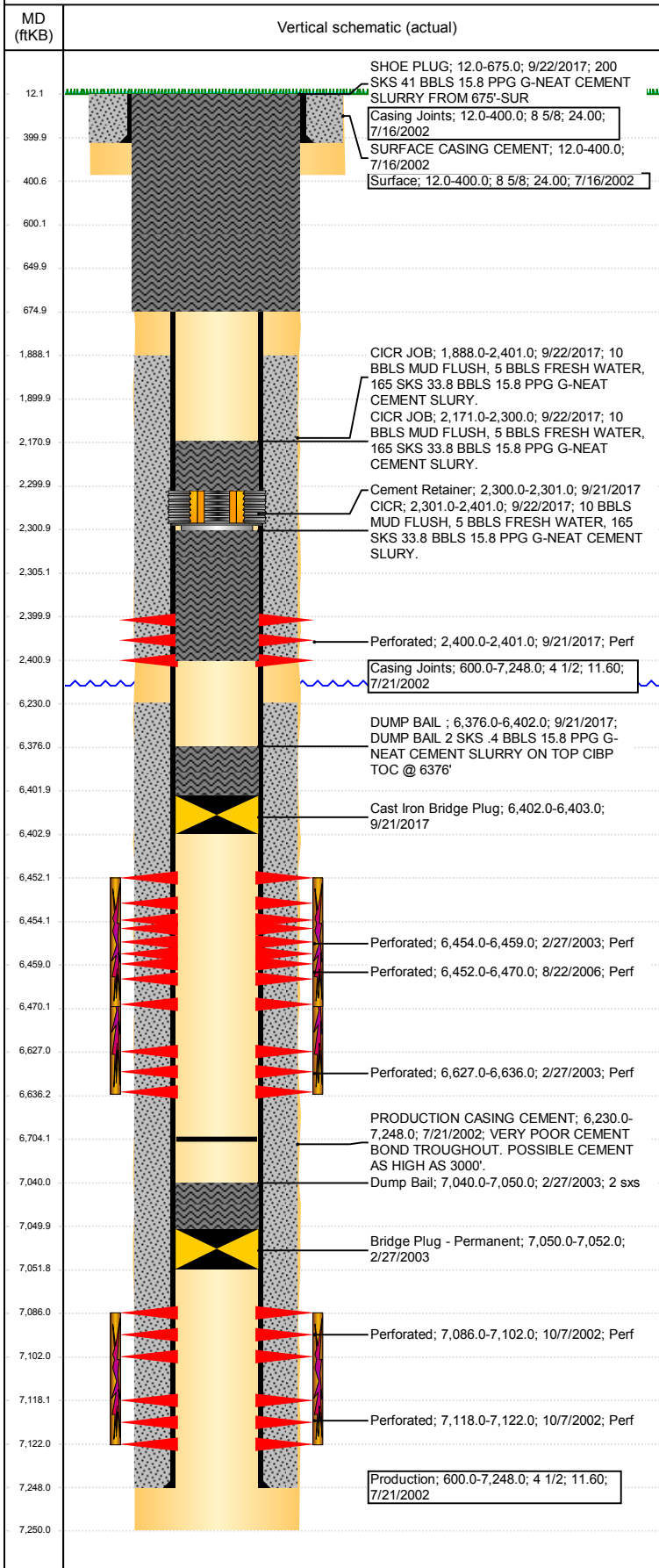
VERTICAL - ORIGINAL HOLE, 10/24/2017 8:51:35 AM



Well Header							
API 05-123-20888	Business Unit DJ BASIN		District 15		Well Config VERTICAL		
Original KB Elevation (ft) 4,662	KB - GL / MSL (ftKB) 12.00		Spud Date 7/16/2002		P & A Date 9/22/2017		
Comment							
Directions To Well WCR 67 & WCR 68, E 0.2, S 2.8 TO COW CAMP, SW 0.5, S 1.0, SE 1.0, S 0.5, SW 1/4 INTO LOCATION.							
Congressional Location							
Quarter 3 NW	Quarter 4 SE	Section 15	Township 5	Twntshp N/S Dir N	Range 63	Range E/W Dir W	
Bottom Hole Location							
North-South Distance (ft)		From N or S Line		East-West Distance (ft)		From E or W Line	
Plug Back Total Depths							
Date	Depth (ftKB)	Method		Com			
7/21/2002	7,210.0	TAG					
8/15/2008	6,704.0	TAG					
Wellbore Sections							
Section Des		Size (in)		Act Top, MD (ftKB)		Act Btm, MD (ftKB)	
SURFACE		12 1/4		12		401	
PRODUCTION		7 7/8		401		7,250	
Zone Statuses							
Zone Name	Status Date	Status	Fluid Type	Job	Prod Method		
J SAND	2/27/2003	P&A	Water	DRILLING/CO...	Flowing		
NIOBRARA	3/12/2003	PR		DRILLING/CO...			
NIOBRARA	10/13/2006	PR		RE-FRAC, 8/17...			
NIOBRARA	9/9/2008	PR		COMMINGLE...			
NIOBRARA	6/26/2009	PR		PLUG AND AB...			
NIOBRARA	9/21/2017	P&A	Water	DRILLING/CO...	Flowing		
CODELL	3/12/2003	PR	COMMINGLE...				
CODELL	9/9/2008	PR	Water	PLUG AND AB...			
CODELL	6/26/2009	PR	Water				
CODELL	9/21/2017	P&A	Water				
NIOBRARA-C...	6/26/2009	PR	Water		Flowing		
Casing Strings							
Surface, 400.0ftKB							
Casing Description Surface		Run Date 7/16/2002	OD (in) 8 5/8	Wt/Len (l... 24.00	Grade	Top, MD (ft... 12.0	MD (ftKB) 400.0
Production, 7,248.0ftKB							
Casing Description Production		Run Date 7/21/2002	OD (in) 4 1/2	Wt/Len (l... 11.60	Grade	Top, MD (ft... 12.0	MD (ftKB) 7,248.0
Cement							
Description SURFACE CASING CEMENT				Top Depth (ftKB) 12.0		Bottom Depth (ftKB) 400.0	
Description PRODUCTION CASING CEMENT				Top Depth (ftKB) 6,230.0		Bottom Depth (ftKB) 7,248.0	
Description Dump Bail				Top Depth (ftKB) 7,040.0		Bottom Depth (ftKB) 7,050.0	
Description Balance Plug				Top Depth (ftKB) 600.0		Bottom Depth (ftKB) 650.0	
Description Cement Plug				Top Depth (ftKB) 2,171.0		Bottom Depth (ftKB) 2,300.0	
Description Shoe Plug				Top Depth (ftKB) 12.0		Bottom Depth (ftKB) 600.0	
Description Cement Plug				Top Depth (ftKB) 2,305.0		Bottom Depth (ftKB) 2,400.0	
Description Cement Squeeze				Top Depth (ftKB) 1,900.0		Bottom Depth (ftKB) 2,400.0	
Description Dump Bail				Top Depth (ftKB) 6,376.0		Bottom Depth (ftKB) 6,402.0	
Description DUMP BAIL				Top Depth (ftKB) 6,376.0		Bottom Depth (ftKB) 6,402.0	
Description CICR JOB				Top Depth (ftKB) 2,171.0		Bottom Depth (ftKB) 2,300.0	
Description CICR				Top Depth (ftKB) 2,301.0		Bottom Depth (ftKB) 2,401.0	
Description CICR JOB				Top Depth (ftKB) 1,888.0		Bottom Depth (ftKB) 2,401.0	

Well Name: WELLS 33-15

VERTICAL - ORIGINAL HOLE, 10/24/2017 8:51:35 AM



Cement								
Description SHOE PLUG				Top Depth (ftKB) 12.0		Bottom Depth (ftKB) 675.0		
Tubing Strings								
Tubing Description Tubing - Production		Run Date 10/17/2006	String... 2 3/8	ID (in) 2.00	Wt (lb/ft) 4.70	Grade J-55	Len (ft) 6,422.00	Set De...
Tubing Components								
Item Des	OD (in)	Wt (lb/ft)	Grade	Jts	Len (ft)	Btm (ftKB)	Btm (TVD) (ftKB)	
Tubing	2 3/8	4.70	J-55	193	6,421.00	6,433.0		
Pump Seating Nipple	2 3/8			1	0.70	6,433.7		
Notched collar	2 3/8			1	0.30	6,434.0		
Tubing Description Tubing - Production		Run Date 8/15/2008	String... 2 3/8	ID (in) 2.00	Wt (lb/ft) 4.70	Grade J-55	Len (ft) 6,616.76	Set De...
Tubing Components								
Item Des	OD (in)	Wt (lb/ft)	Grade	Jts	Len (ft)	Btm (ftKB)	Btm (TVD) (ftKB)	
Tubing	2 3/8	4.70	J-55	215	6,615.36	6,614.0		
Pump Seating Nipple	2 3/8			1	1.10	6,615.1		
Notched collar	3 1/16			1	0.30	6,615.4		
Other In Hole								
Run Date	Des				OD (in)	Top (ftKB)	Btm (ftKB)	
2/27/2003	Bridge Plug - Permanent				3.99	7,050.0	7,052.0	
9/21/2017	Cast Iron Bridge Plug				3.99	6,402.0	6,403.0	
9/21/2017	Cement Retainer				3.99	2,300.0	2,301.0	
Logs								
Date	Type				Top, MD (ftKB)		Btm, MD (ftKB)	
7/20/2002	Compensated Density				6,230.0		7,253.0	
7/30/2002	Cement Bond				2,154.0		7,205.0	
4/12/2011	GYRO				10.0		6,600.0	
Perforation Data								
Linked Zone	Bnch/St g	Sum of Entered Shot Total	Top (ftKB)		Btm (ftKB)		Date	
J SAND, ORIGINAL HOLE NIOBRARA, ORIGINAL HOLE NIOBRARA, ORIGINAL HOLE CODELL, ORIGINAL HOLE J SAND, ORIGINAL HOLE J SAND, ORIGINAL HOLE		6					9/21/2017	
		0	2,400.00	2,400.00	7/14/2017			
		0	2,400.00	2,401.00	9/21/2017			
		108	6,452.00	6,470.00	8/22/2006			
		2	6,454.00	6,459.00	2/27/2003			
		36	6,627.00	6,636.00	2/27/2003			
	80	7,086.00	7,102.00	10/7/2002				
	16	7,118.00	7,122.00	10/7/2002				
Total (Sum)		248						
Stimulation Intervals								
Start Date 10/8/2002		Primary Job Type DRILLING/COMPLETION - ORIGINAL						
Technical Result		Tech Result Details			Tech Result Note			
Comment								
Start Date 2/28/2003		Primary Job Type DRILLING/COMPLETION - ORIGINAL						
Technical Result		Tech Result Details			Tech Result Note			
Comment								
CODELL/NIOBRARA FRAC'D VIA LIMITED ENTRY								
Start Date 10/12/2006		Primary Job Type RE-FRAC						
Technical Result		Tech Result Details			Tech Result Note			
Comment								